

# The Department of Architecture

*By Michael Tedros, M. Arch., Partner, Enav & Tedros Architects & Town Planners.*

In October 1962, a committee was set up by the Haile Selassie I University to study the possibilities of setting up a Department of Architecture within the College of Engineering. Professor S. Hesselgren was appointed the Chairman. Professor Hesselgren was at that time at the Ethio-Swedish Building Institute; and is well known for his studies and research in the field of preceptive psychology, and is a leader in this field.

Setting up a curriculum of the study of Architecture is a difficult problem in a developing country. Professor Hesselgren set up the curriculum after studying the curricula of various leading schools of architecture in different parts of the world and after discussions with architects working in Ethiopia.

The curriculum has been modified from year to year as felt advisable by the Head of the Department in the light of the experiences of the faculty.

In 1965 Professor Hesselgren finished his contract and returned to Sweden. During his term as first Head of the Department his salary had been paid by the Swedish Government.

The next Head of the Department was Mr. H. Pavell who had been a part time teacher and then full time assistant Professor. Mr. Pavell came to Ethiopia as Head of the Town Planning Mission from Israel which was assigned to the Ministry of Interior. Mr. Pavell left to return to Israel in 1966. The new Head is Mr. Jan Riener, an American Architect.

The first group of students finished their

studies in June of this year (1966) and are now engaged in their one year of practical experience which they have to do before getting their Diplomas.

The first group often felt that they, being the first, were sort of "Guinea Pigs", as in a sense they were.

Most of the faculty feel that the course should be extended by a further year to bring it in line with leading schools elsewhere. However, the work of the graduating students has been far better than we dared hope at the beginning of the course.

In the following pages can be seen the graduation work of two of the students. First is the work of Ahdul Mejid Ali, which is a project proposal for the development of the triangular area between Menelik II Square and Haile Selassie I. Star Square and bordered on the East by Eden Street.

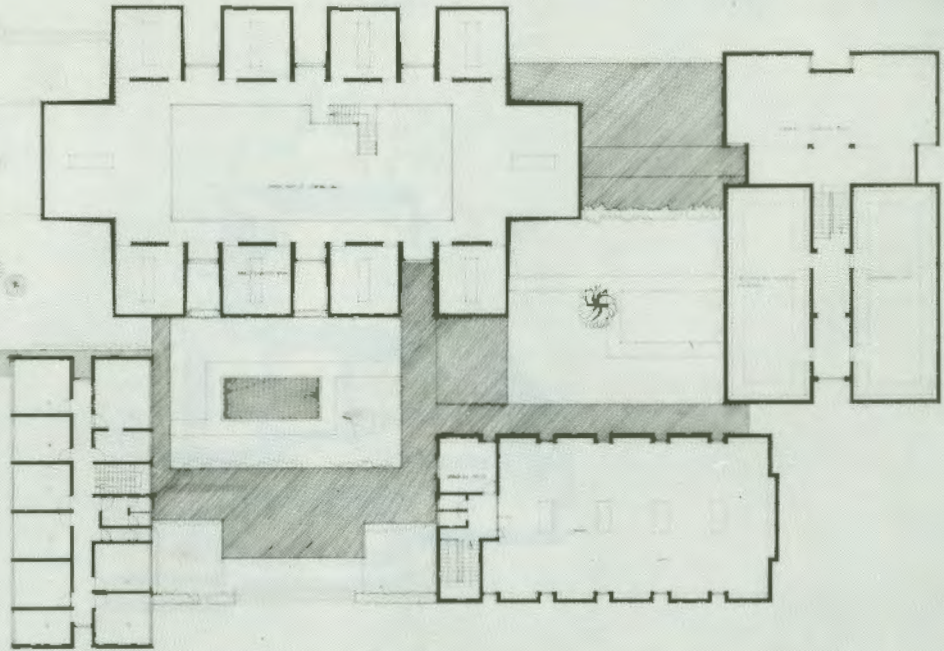
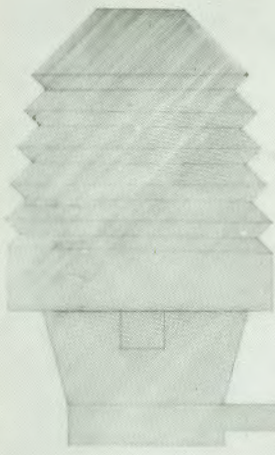
This shows a mixed development of shops, apartments and offices with parking and service access under.

The second project is the work of Assefa Bekele and is a project for a national Museum with departments for archeology, painting, sculpture, costumes etc. and an auditorium.

I would like to have shown the projects of more of the students but problems of space made this impossible but these two projects indicate the standards of the first group.

These graduates will, I feel confident, play a useful role in the development of modern architecture in Ethiopia.





1. Main Entrance  
 2. Reception  
 3. Office  
 4. Conference Room  
 5. Library  
 6. Lecture Hall  
 7. Auditorium  
 8. Exhibition Hall  
 9. Storage  
 10. Rest Room  
 11. Elevator  
 12. Staircase  
 13. Corridor  
 14. Office  
 15. Office  
 16. Office  
 17. Office  
 18. Office  
 19. Office  
 20. Office  
 21. Office  
 22. Office  
 23. Office  
 24. Office  
 25. Office  
 26. Office  
 27. Office  
 28. Office  
 29. Office  
 30. Office  
 31. Office  
 32. Office  
 33. Office  
 34. Office  
 35. Office  
 36. Office  
 37. Office  
 38. Office  
 39. Office  
 40. Office  
 41. Office  
 42. Office  
 43. Office  
 44. Office  
 45. Office  
 46. Office  
 47. Office  
 48. Office  
 49. Office  
 50. Office  
 51. Office  
 52. Office  
 53. Office  
 54. Office  
 55. Office  
 56. Office  
 57. Office  
 58. Office  
 59. Office  
 60. Office  
 61. Office  
 62. Office  
 63. Office  
 64. Office  
 65. Office  
 66. Office  
 67. Office  
 68. Office  
 69. Office  
 70. Office  
 71. Office  
 72. Office  
 73. Office  
 74. Office  
 75. Office  
 76. Office  
 77. Office  
 78. Office  
 79. Office  
 80. Office  
 81. Office  
 82. Office  
 83. Office  
 84. Office  
 85. Office  
 86. Office  
 87. Office  
 88. Office  
 89. Office  
 90. Office  
 91. Office  
 92. Office  
 93. Office  
 94. Office  
 95. Office  
 96. Office  
 97. Office  
 98. Office  
 99. Office  
 100. Office

The Department of Architecture

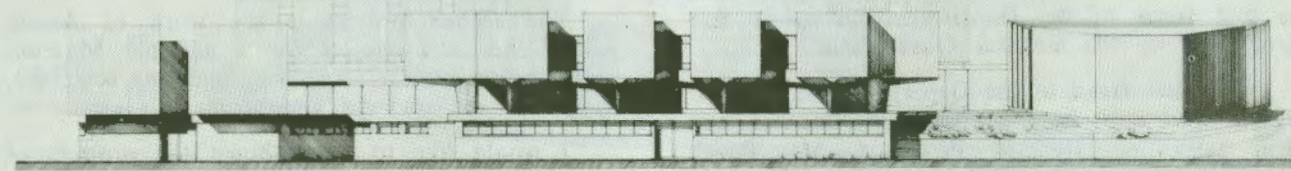
GRADUATION PROJECT  
 SCALE 1/8"

NATIONAL MUSEUM  
 WEST ELEVATION  
 SCALE 1/8"

1. Main Entrance  
 2. Reception  
 3. Office  
 4. Conference Room  
 5. Library  
 6. Lecture Hall  
 7. Auditorium  
 8. Exhibition Hall  
 9. Storage  
 10. Rest Room  
 11. Elevator  
 12. Staircase  
 13. Corridor  
 14. Office  
 15. Office  
 16. Office  
 17. Office  
 18. Office  
 19. Office  
 20. Office  
 21. Office  
 22. Office  
 23. Office  
 24. Office  
 25. Office  
 26. Office  
 27. Office  
 28. Office  
 29. Office  
 30. Office  
 31. Office  
 32. Office  
 33. Office  
 34. Office  
 35. Office  
 36. Office  
 37. Office  
 38. Office  
 39. Office  
 40. Office  
 41. Office  
 42. Office  
 43. Office  
 44. Office  
 45. Office  
 46. Office  
 47. Office  
 48. Office  
 49. Office  
 50. Office  
 51. Office  
 52. Office  
 53. Office  
 54. Office  
 55. Office  
 56. Office  
 57. Office  
 58. Office  
 59. Office  
 60. Office  
 61. Office  
 62. Office  
 63. Office  
 64. Office  
 65. Office  
 66. Office  
 67. Office  
 68. Office  
 69. Office  
 70. Office  
 71. Office  
 72. Office  
 73. Office  
 74. Office  
 75. Office  
 76. Office  
 77. Office  
 78. Office  
 79. Office  
 80. Office  
 81. Office  
 82. Office  
 83. Office  
 84. Office  
 85. Office  
 86. Office  
 87. Office  
 88. Office  
 89. Office  
 90. Office  
 91. Office  
 92. Office  
 93. Office  
 94. Office  
 95. Office  
 96. Office  
 97. Office  
 98. Office  
 99. Office  
 100. Office



WEST ELEVATION



EAST ELEVATION

GRADUATION PROJECT

NATIONAL MUSEUM  
 ELEVATIONS  
 SCALE 1/8"

1. Main Entrance  
 2. Reception  
 3. Office  
 4. Conference Room  
 5. Library  
 6. Lecture Hall  
 7. Auditorium  
 8. Exhibition Hall  
 9. Storage  
 10. Rest Room  
 11. Elevator  
 12. Staircase  
 13. Corridor  
 14. Office  
 15. Office  
 16. Office  
 17. Office  
 18. Office  
 19. Office  
 20. Office  
 21. Office  
 22. Office  
 23. Office  
 24. Office  
 25. Office  
 26. Office  
 27. Office  
 28. Office  
 29. Office  
 30. Office  
 31. Office  
 32. Office  
 33. Office  
 34. Office  
 35. Office  
 36. Office  
 37. Office  
 38. Office  
 39. Office  
 40. Office  
 41. Office  
 42. Office  
 43. Office  
 44. Office  
 45. Office  
 46. Office  
 47. Office  
 48. Office  
 49. Office  
 50. Office  
 51. Office  
 52. Office  
 53. Office  
 54. Office  
 55. Office  
 56. Office  
 57. Office  
 58. Office  
 59. Office  
 60. Office  
 61. Office  
 62. Office  
 63. Office  
 64. Office  
 65. Office  
 66. Office  
 67. Office  
 68. Office  
 69. Office  
 70. Office  
 71. Office  
 72. Office  
 73. Office  
 74. Office  
 75. Office  
 76. Office  
 77. Office  
 78. Office  
 79. Office  
 80. Office  
 81. Office  
 82. Office  
 83. Office  
 84. Office  
 85. Office  
 86. Office  
 87. Office  
 88. Office  
 89. Office  
 90. Office  
 91. Office  
 92. Office  
 93. Office  
 94. Office  
 95. Office  
 96. Office  
 97. Office  
 98. Office  
 99. Office  
 100. Office