

Figures

Figure 1. Europa Island. Stations prospected during BIORECIE 2011 (spots) and stations prospected during BIOTAS 2009 where Decapoda were collected (squares, with station numbers in *italic*). Details for each station are in tables 1-2.

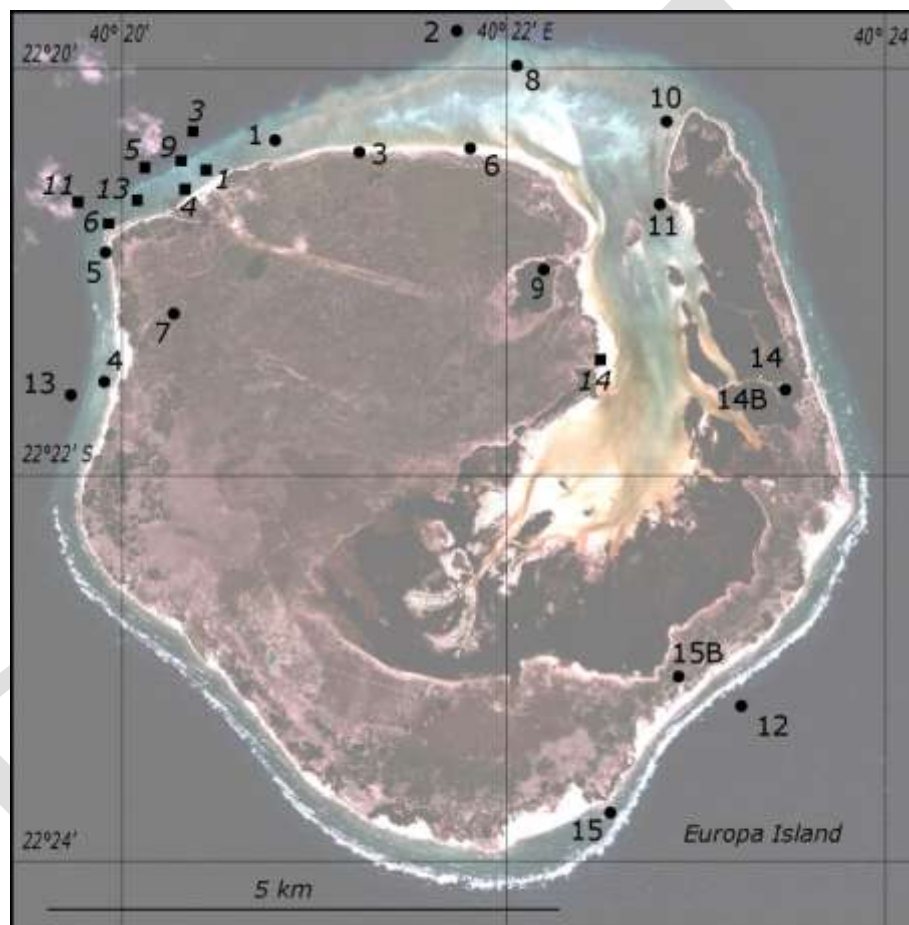


Figure 2. Shrimps and lobster of Europa: reef flat and outer reef. A) *Periclimenes imperator*, BIOTAS, St. EURO-11; B) *Cuapetes ensifrons*, BIOTAS, St. EURO-17; C) *Alpheus pacificus*, BIORECIE, St. 15 (MNHN); D) *Panulirus versicolor* (juvenile), BIOTAS, St. EURO-1.

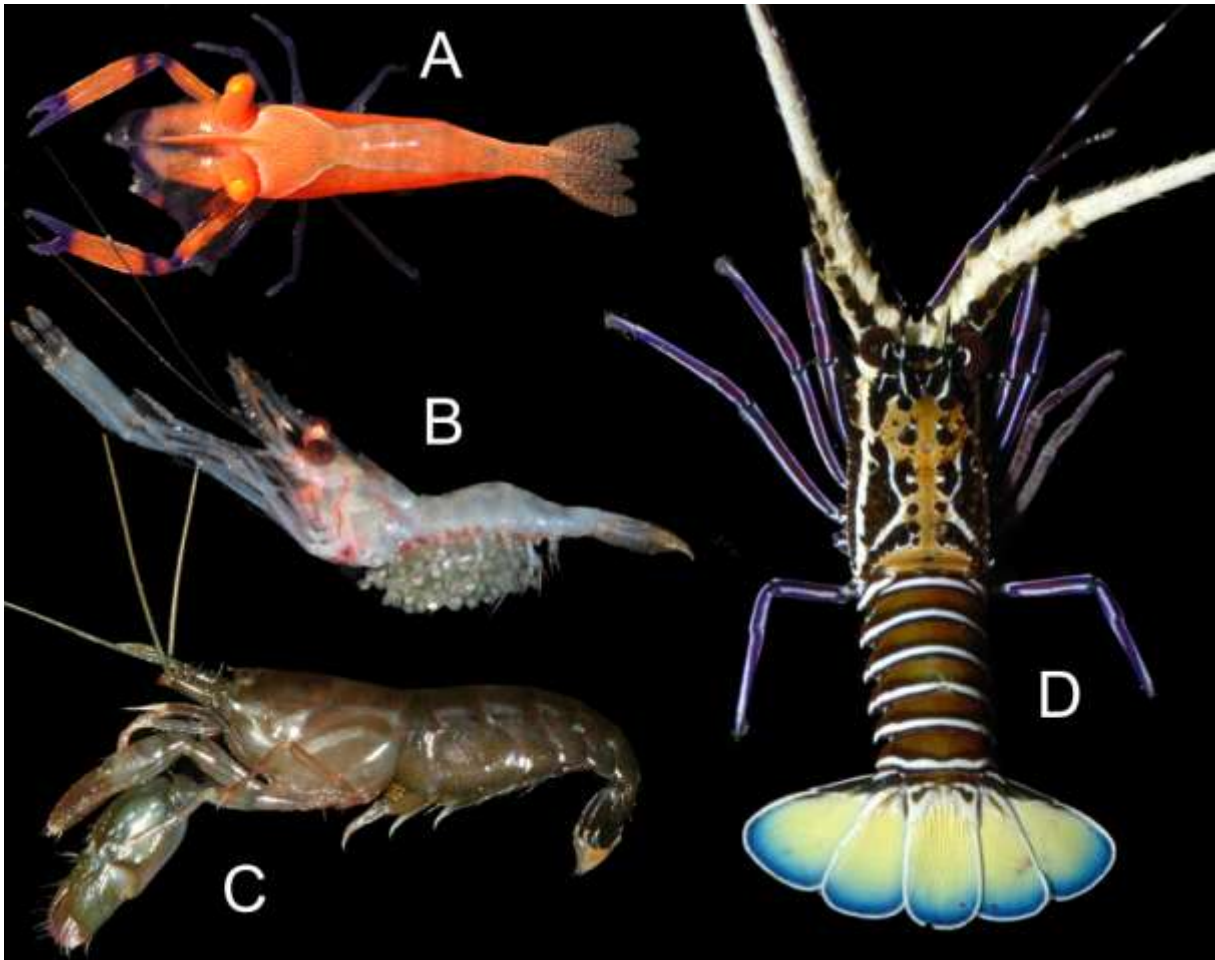


Figure 3. Coenobites of Europa: upper intertidal. A, C) *Coenobita perlatus*, BIORECIE, St. 3, 5; B, D) *Coenobita rugosus*, BIORECIE, St. 7.



Figure 4. Anomuran *Calcinus* and *Clibanarius* of Europa: reef flat and outer reef. A) *Calcinus morgani*, BIOTAS, St. EURO-18; B) *Calcinus laevimanus*, BIOTAS, St. EURO-1; C) *Calcinus seurati*, BIOTAS, St. EURO-8; D) *Calcinus rosaceus*, BIOTAS, St. EURO-3; E) *Calcinus latens*, BIOTAS, St. EURO-3; F) *Clibanarius eury sternus*, BIORECIE, St. 4; G) *Clibanarius striolatus*, BIORECIE, St. 14 (MNHN).

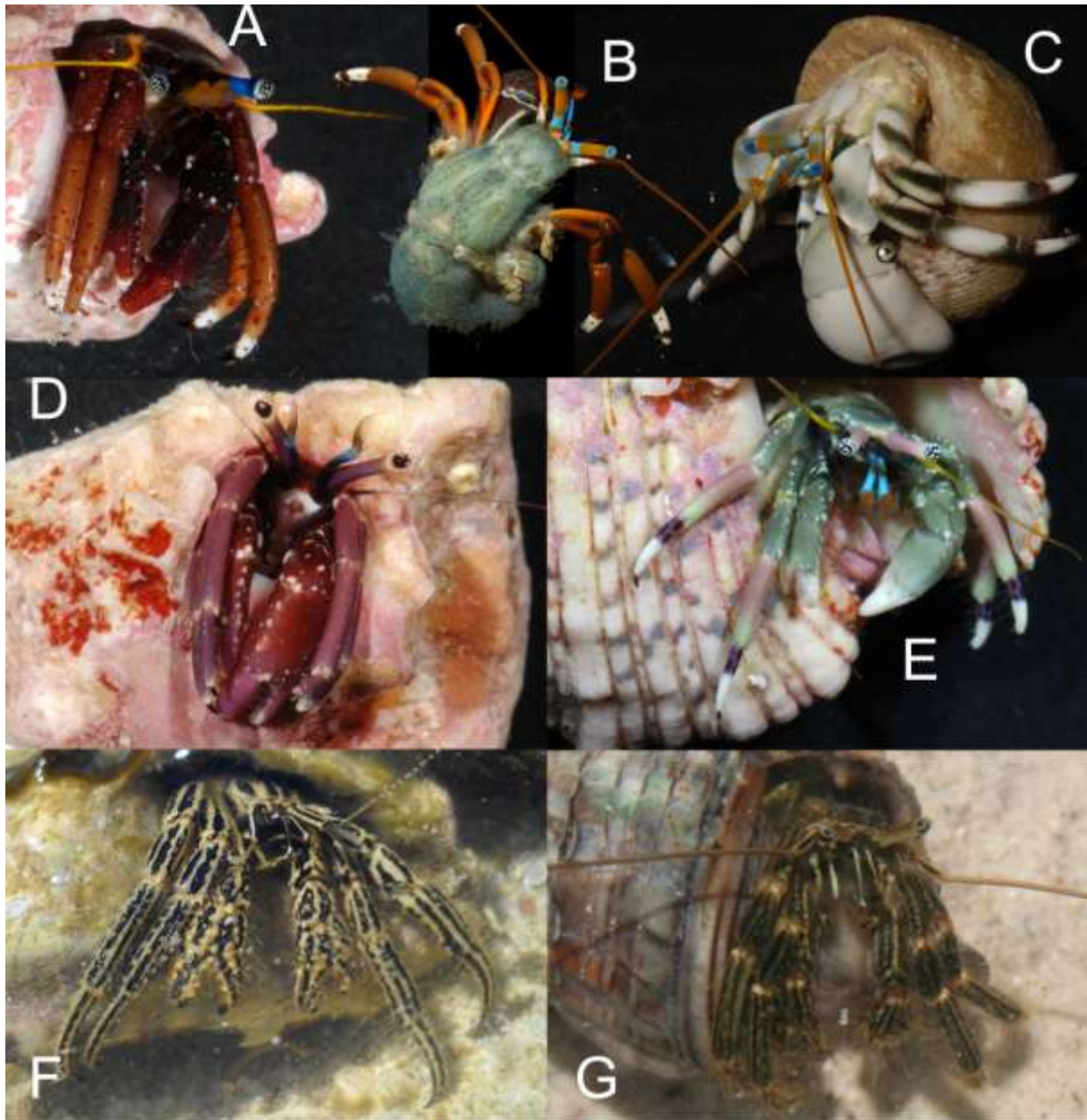


Figure 5. Anomuran of Europa: mangrove, reef flat and outer reef. A) *Petrolisthes borradailei*, BIORECIE, St. 15 (MNHN); B) *Pagurixus haigae*, BIORECIE, St. 1 (MNHN); C) *Clibanarius longitarsus*, BIOTAS, St. EURO-14; D) *Aniculus ursus*, BIOTAS, St. EURO-7; E) *Ciliopagurus tricolor*, BIOTAS, St. EURO-1; F) *Dardanus scutellatus*, BIORECIE, St. 14 (MNHN).

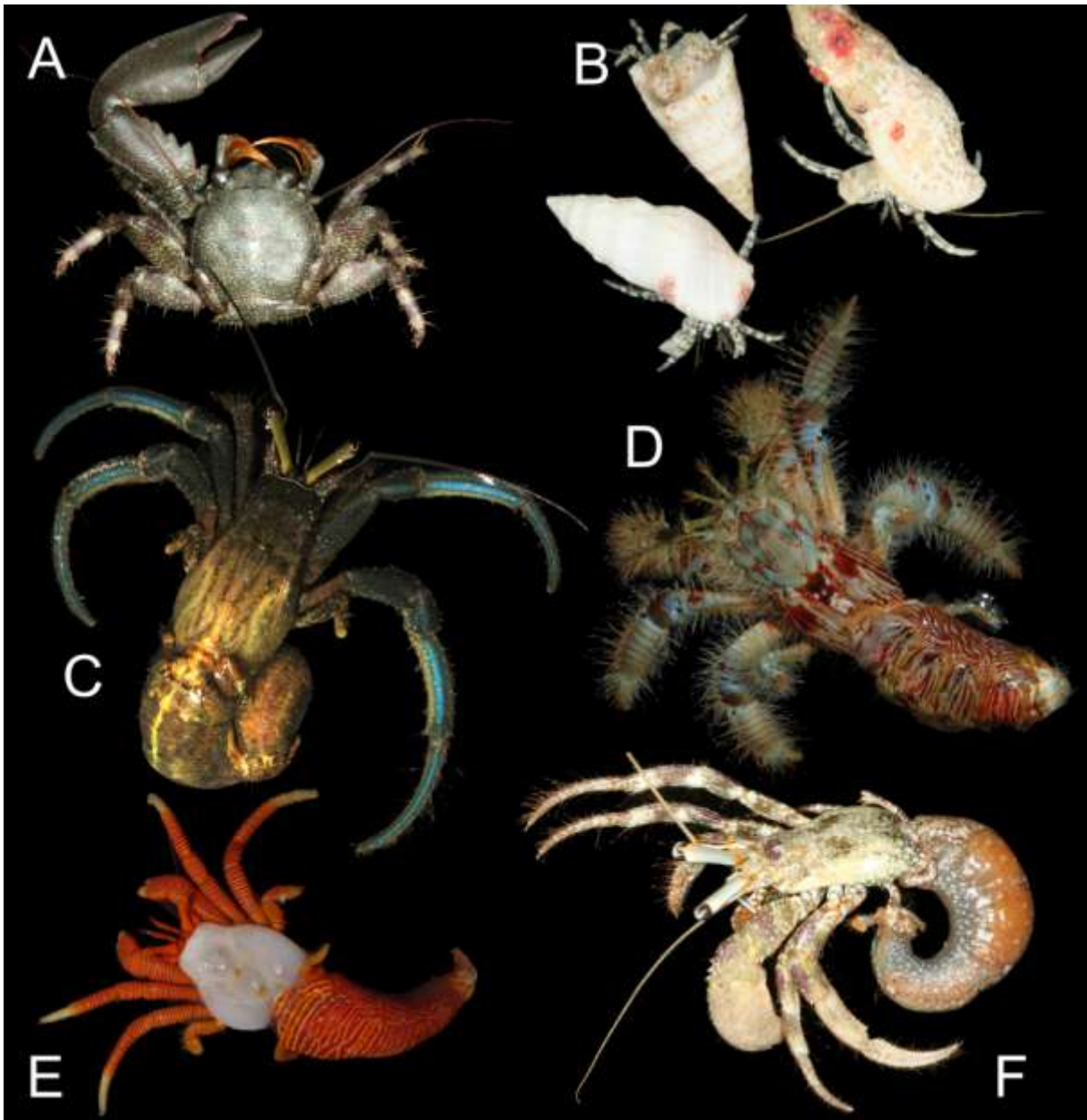


Figure 6. Common portunid crabs of Europa. Mangrove: A) *Thalamita crenata*, BIORECIE, St. 14 (MNHN); B) *Scylla serrata*, BIORECIE, St. 14 (photo F. Fromard). Reef flat and outer reef: C) *Thalamitoides quadridens*, BIOTAS, St. EURO-17; D) *Thalamita picta*, BIORECIE, St. 15 (MNHN).

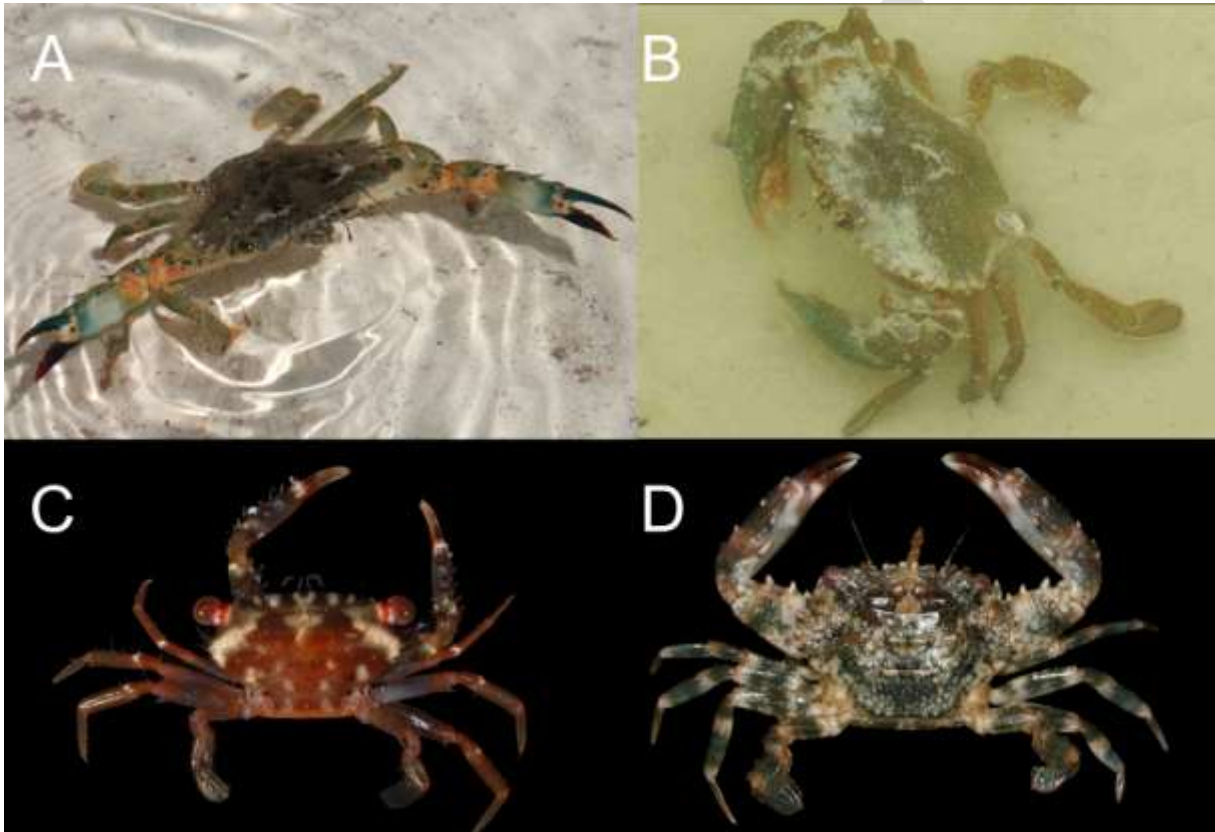


Figure 7. Small and medium sized crabs of Europa: upper intertidal and reef flat. A) *Micippa platipes*, BIORECIE, St. 4 (MNHN); B) *Cyclodius obscurus*, BIORECIE, St. 14 (MNHN); C) *Pilodius areolatus*, BIORECIE, St. 1; D) *Percnon planissimum*, BIOTAS, St. EURO-1; E) *Pachygrapsus minutus*, BIORECIE, St. 1; F) *Chaenostoma lisae*, BIORECIE, St. 4 (MNHN).

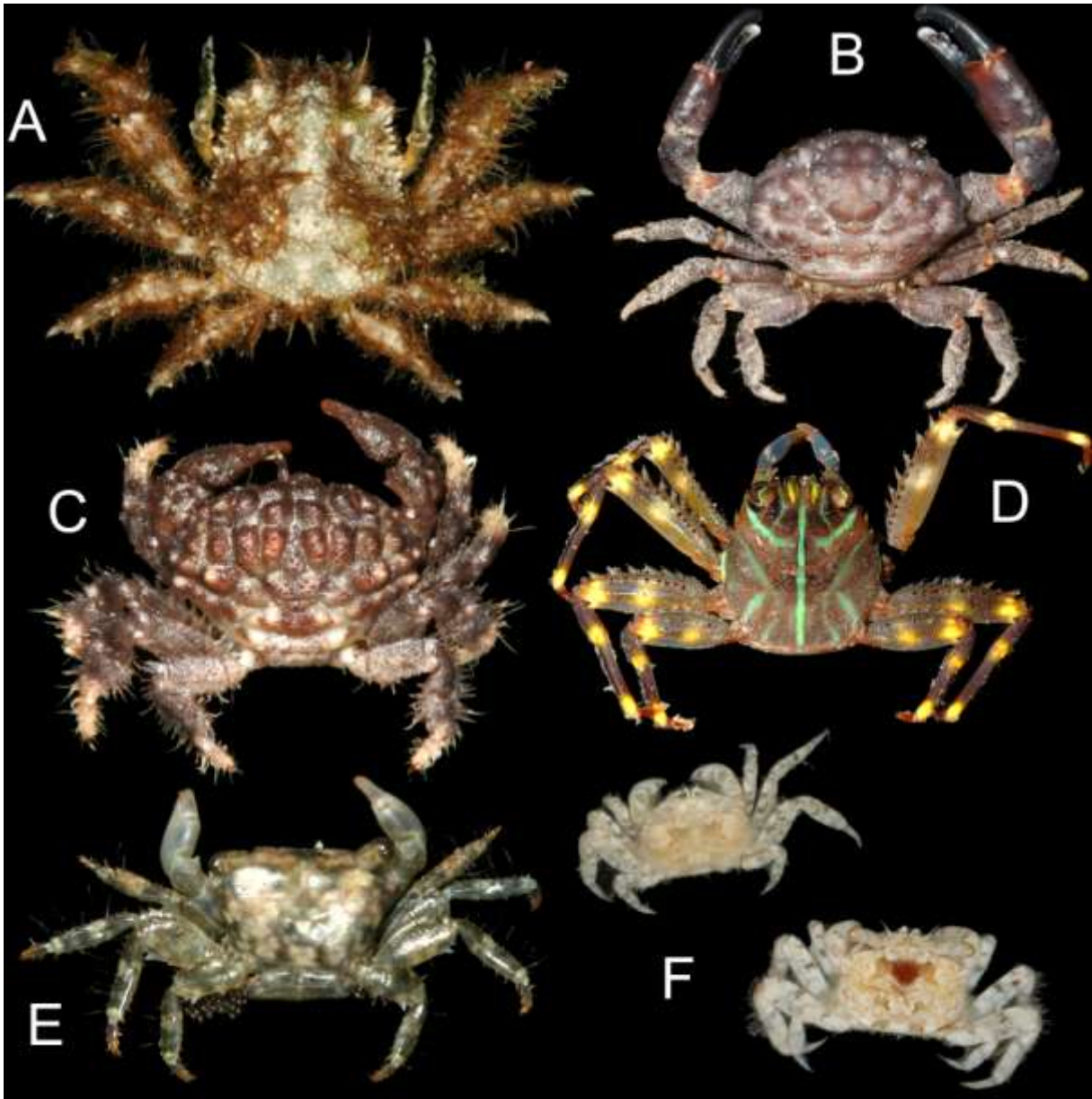


Figure 8. Medium and large sized crabs of Europa: land and upper intertidal. A) *Calappa hepatica*, BIORECIE, St. 8; B) *Eriphia sebana*, BIORECIE, St. 15; C) *Etisus laevimanus*, BIORECIE, St. 14; D) *Cardisoma carnifex*, BIORECIE, St. 9; E) *Grapsus tenuicrustatus*, BIORECIE, St. 15; F) *Ocypode ceratophthalmus*, BIORECIE, St. 8.



Figure 9. Common Grapsidae and Ocypodidae crabs of Europa: mangrove and upper intertidal. *Grapsus tenuicrustatus*, BIOTAS, St. EURO-13; B) *Parasesarma lenzii*, BIORECIE, St. 14 (MNHN); C) *Grapsus fourmannoiri*, BIOTAS, St. 14 (MNHN); D) *Metopograpsus thukuhar*, BIORECIE, St. 14 (MNHN); E) *Grapsus longitarsis*, BIORECIE, St. 5 (MNHN); F) *Ocypode* aff. *pallidula*, BIOTAS, St. EURO-1.

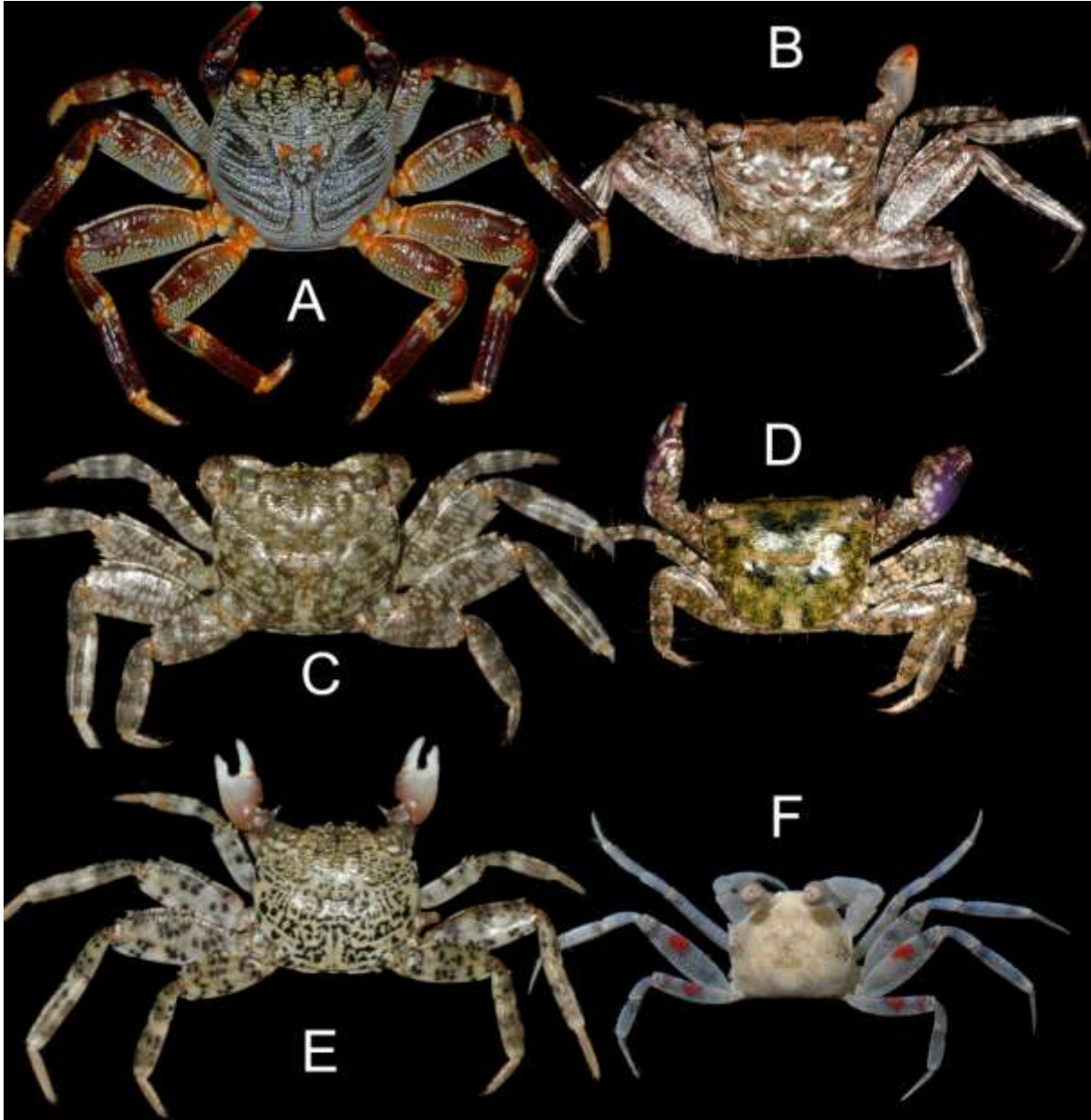


Figure 10. Small sized crabs of Europa: outer reef. A) *Trapezia lutea*, BIOTAS, St. EURO-17, obligate associate of coral; B) *Chlorodiella laevis*, BIOTAS, St. EURO-16; C) *Liomera monticulosa*, BIOTAS, St. EURO-17; D) *Liocarpilodes armiger* (2 specimens), BIOTAS, St. EURO-17; E) *Hapalocarcinus marsupialis*, BIOTAS, St. EURO-3, obligate associate of coral; F) *Lybia tessellata*, BIOTAS, St. EURO-16; G) *Pseudoliomera variolosa*, BIOTAS, St. EURO-17.

