

Standard 12 Lead and 24 hour holter electrocardiographic observation in a biracial group of perinatally asphyxiated newborns

*S. I. Omokhodion, F. Jaiyesimi¹ and T. G. Losekoot²

¹Department of Paediatrics University College Hospital, P. M. B. 5116, Ibadan.

²Department of Paediatrics, Nizwa General Hospital, Nizwa, Sultanate of Oman

²Department of Paediatric Cardiology, Academic Medical Centre, Amsterdam; now retired.

Summary

Aim

To compare the cardiovascular responses to perinatal stress between two ethnic groups of newborns.

Study population

23 Nigerians and 14 Dutch perinally asphyxiated newborns together with their respective control of 12 healthy Nigerian and 16 Dutch newborns.

Method

The study subjects and their controls were evaluated with standard 12-lead and 24-hour Holter electrocardiographic recordings within 36 hours of postnatal life.

Result

Rhythm, rate, P-wave, P-R interval and QRS duration were normal in study subjects and their respective controls on standard ECG. The prevalence of ST-segment depression in the mid-precordial lead V₄ was significantly higher in the asphyxiated Nigerian infants (78%) than in the controls (42%); $p < 0.05$. Similarly, its prevalence in the Dutch infants (50%) was significantly different from the zero prevalence in the Dutch controls; $p < 0.05$. Long duration ECG recordings showed a 'fixed heart rate' phenomenon in the asphyxiated infants but not in their controls.

Conclusion

ST-segment depression may imply myocardial ischaemia in asphyxiated Dutch newborns but such may not be inferred in asphyxiated Nigerian newborns. 'Fixed heart rate' phenomenon or loss of sinus arrhythmia appears to be causally related to hypoxaemia which results from perinatal asphyxia.

Keywords: Perinatal, Asphyxia, Biracial, Newborns, Electrocardiography, Holter-monitoring

Résumé

But

Comparer des réactions cardiovasculaire au stress périnatal entre des nouveau-nés de deux groupes ethniques.

Population d'étude

23 Nigeriens et 14 Hollandais nouveau-nés périnatalement asphyxiés ainsi qu'avec leurs contrôles respectifs de 12 Nigeriens et 16 hollandais nouveau-nés en bonne santé.

Méthode

Les sujets d'étude ainsi que leurs contrôles ont été évalués avec le niveau 12 plomb et 24 heures holter électrocardiographique enregistrements en moins de 36 heures vie postnatale.

Resultats

La cadence, taux P-vague, intervalle P-R et la durée QRS étaient tous normaux chez les sujets d'étude et leur contrôles respectifs sur le mode ECG. La fréquence de ST-segment était dépressif dans le plomb mi-precordial V₄ était sensiblement élevé chez les enfants nigériens asphyxiés 78% plus que dans le groupe de contrôle 42%, $P < 0,05$. Pareillement, sa fréquence chez des enfants hollandais asphyxiés 50% était sensiblement différente du Zéro fréquence chez le group de contrôle d' hollandais $P < 0,05$. Enregistrement de la longue durée de ECG a montré un phénomène de taux fixé de Coeur chez le groupe des enfants asphyxiés mais pas chez leurs contrôles.

Conclusion

État dépressif ST-segment pourrait laisser supposer une ischémie myocarde chez des nouveau-nés hollandais asphyxiés mais ça ne peut pas être la même chez les nouveau-nés nigériens asphyxiés.

Le phénomène "taux fixé du Coeur" ou la perte de l'arythmie sinus de l'hypoxémie paraît être en passant lié à l'hypoxémie conséquences d'asphyxie périnatale.

Introduction

Several normal variations of the cardiac rhythm have been described in neonates.^{1,2,3} These include sinus arrhythmia, sinus bradycardia, sinus tachycardia, sino-atria block, wandering atrial pace maker and other atrial and ventricular extrasystoles. These have been linked to physiologic and morphologic postnatal changes, including postnatal development changes in the cardiac conducting system. Some of these observations may also be hypoxaemia related as evidence exists⁴ showing that the conducting tissues of the heart have a differential susceptibility to hypoxaemia or ischaemia. In baboons for instance, AV-block arrhythmias and a 'fixed heart rate' or a lack of sinus arrhythmia have been shown to follow diminished uteroplacental perfusion.⁵ These observations were apparently mediated via the parasympathetic pathway since they were blocked by atropine. A similar fixed heart rate has been noted to be frequently associated with low Agar scores in human infants.¹ Ventricular tachyarrhythmias, third degree A-V block (with increased risk of dying in the first few weeks of life) and other intraventricular conduction defects have all been noted in association with hypoxic heart failure and metabolic derangement in the newborn period.¹

These observations have been borne out of animal experimentation and work carried out on Caucasian infants. The present study in which perinatally asphyxiated Nigerian newborns are compared with similarly asphyxiated Dutch newborns under the same study conditions is borne out of a necessity to establish any similarities and ethnic variations with respect to cardiac rhythms and conduction patterns.

Patients, Methods and Materials

Fourteen perinally asphyxiated Dutch newborns and 23 perinatally asphyxiated Nigerian newborns were recruited to the study from the Neonatal Intensive Care Unit (NICU) of the Academic Medical Centre (AMC), Amsterdam and the Special Care Baby Unit (SCBU) of the University College Hospital (UCH), Ibadan respectively. Perinatal asphyxia was defined simply by a 1 minute Apgar score of ≤ 6 . Sixteen healthy Dutch newborn controls and 12 healthy Nigerian newborn controls were recruited from the lying - in wards of the two centres.

Cord blood pH, glucose and bicarbonate in Amsterdam and cord blood bicarbonate and glucose in Ibadan were estimated to corroborate the selection criteria of the study subjects and controls. The profiles of the study subjects and their respective controls are shown in table 1.

Each infants had a standard 12-lead ECG at between 6 - 12 hours of age. This period was chosen to correspond with the best 'window' for the detection of hypoxaemia - related myocardial dysfunction, which results from perinatal stress, and also to precede the 24 hours Holter ECG recordings. At the AMC, the standard ECG recordings were made with the commercially available

* Correspondence

Siemens 6-channel recorder. Rhythm, rate and conduction disorders were sought in addition to hypertrophy patterns and ST-T wave changes. Findings were compared with the standards established by Davignon et al⁶ and nomenclature followed the definition of the World Health Organisation (WHO) and International Society of Cardiology (ISC) Task force reports of 1978 and 1979.^{7,8} The 24-hour ECG recording was commenced immediately after the standard ECG recording in each infant using a commercially available Oxford instrument company Holter recorder on TDK AD 120 brand of cassette magnetic tapes. The recordings were carried out under normal neonatal ward environmental conditions (figure 1). The babies could be handled at will without interfering with the recording process. The electrode positions used in all the babies were the modified V_1 like system to facilitate identification of ectopic beats and a V_5 like system to detect myocardial ischaemia.⁹ The ground or negative electrode was positioned in the left flank. During recordings, the ward staff and mothers handled the babies freely, but all activities were charted by the ward nursing staff on log-sheets specially provided for the purpose. All the 24-hour cassette tape recordings were then played back at the standard sixty times the recording speed on the Oxford Medilog ECG analysis system (figure 2) by a trained technician at the AMC who was blinded to the clinical information on the study subjects and the same criteria defined by the WHO/ISC⁷ task force were followed in interpreting the findings. The Medilog system was programme to identify among others, sinus arrhythmias, sino-atrial block, sinus bradycardia with or without junctional escape rhythm and fixed heart rate phenomenon. Others included premature atrial complexes (PACs) and premature ventricular complexes (PVCs). A close reference to the log-sheets of activities on each baby was kept in interpreting the findings. The playback procedure was programmed to stop automatically on detection of any anomaly. Paper tracings of the anomaly were then automatically generated for closer scrutiny.

Heart-rate variation during activity and rest was measured by histogram module in the analyzer and plotted for the 24 hour period of the recording (figure 3). Thus it was possible to recognize the highest and the lowest heart rates attained during a 24-hour period as well as the more constant heart rate (mean heart rate).

Findings were compared between both ethnic groups and their respective ethnic controls. Where appropriate tests of significance were applied using the students 't' test or chi squared with Yates correction for the small numbers of subjects. The level of significance was $p < 0.05$.

Results

Standard ECG

Rhythm

All the infants studied were in sinus rhythm except for one Dutch control who had numerous atrial extrasystoles. Statistically this did not constitute a significant variation.

Rate

The mean heart rate in the asphyxiated Nigerian infants (range

105 - 150; mean 131 ± 13 beats/minute) was significantly lower than that in the Nigerian controls (range 120 - 170; mean 144 ± 17 beats/minute) ($t = 2.31$; $p < 0.01$).

The rates in the asphyxiated Dutch infants (range 77 - 180; mean 133 ± 29) did not differ significantly from the rates in the Dutch controls (range 105 - 170; mean 138 ± 14) ($t = 0.52$; $p > 0.05$). The rates in the asphyxiated Dutch and Nigerian infants were similar ($t = 0.62$; $p > 0.05$) The rates in their respective controls were similar as well ($t = 0.56$; $p > 0.05$).

P-Wave

The P-wave was normal in all the asphyxiated infants as well as their controls.

P - R Intervals

Atrio-ventricular conduction was normal in all asphyxiated as well as control infants. The ranges were (0.08 - 0.13; mean 0.10 ± 0.02 second) and (0.08 - 0.12; mean 0.10 ± 0.02 second) in the asphyxiated Nigerian infants and controls respectively; and (0.08 - 0.12; mean 0.10 ± 0.01 second) and (0.08 - 0.12; mean 0.10 ± 0.01 second) in the asphyxiated Dutch infants and controls respectively. The P-R intervals were thus similar in all cases.

QRS Complex

Intra-ventricular conduction as recorded on standard 12-lead ECG was normal in all asphyxiated infants and controls. The ranges and means of the QRS durations were similar in all groups ($0.04 - 0.08$; mean 0.05 ± 0.01 second).

Right ventricular hypertrophy (RVH) was observed in 2 (9%) of the asphyxiated Nigerian infants and in none of the Nigerian controls; but the difference was not statistically significant, $p > 0.05$. Similarly, its prevalence in the asphyxiated Dutch infants (21%) did not differ significantly from the zero prevalence in the Dutch controls ($p > 0.05$). All the infant in whom RVH was observed had Apgar scores of less than 3 at 1 minute and they all had cardiogenic shock. One Nigerian and 3 Dutch infants who had cardiogenic shock did not show ECG evidence of RVH. To better relate ECG findings with clinical conditions, the clinical categorizations of the study subjects are detailed in an earlier communication.^{8, 10}

ST-Segment

Significant ST-segment depression in $V_4 - V_6$ (> 1 mm below the isoelectric line) was observed in 18 (78%) asphyxiated Nigerian and 50% of the Dutch infants. The corresponding values for their respective controls; 42% and 0% were significantly different, p being < 0.02 and 0.01 respectively. The prevalence in both groups of Nigerian infants was higher than the corresponding values in the Dutch babies.

T-Wave

Flat or inverted T-waves were observed in 9 (39%) of the asphyxiated Nigerian infants and 4 (29%) of the asphyxiated Dutch subjects. The corresponding prevalence in the respective controls were 25% and 6%. The differences were not statistically significant ($p > 0.05$).

24 - Hour ECG

Rhythm

Although phasic sinus arrhythmia was observed in 19 (83%) of the asphyxiated Nigerian infants and in all the 12 controls, the difference was not statistically significant ($p > 0.05$). Similarly the prevalence of phasic sinus arrhythmia in the asphyxiated Dutch infants (79%) did not differ significantly from the 100% prevalence in the Dutch controls.

Brief duration (10 - 30 seconds at a time) of

Table 1 Clinical profiles of study subjects and their respective controls

	AN (n = 23)	CN (n = 12)	AD (n = 14)	CD (n = 16)
Mean Gestational age (weeks)				
Preterm	32.1 (11)	32.8(7)	31.1(7)	32.3(6)
Term	41.0(12)	39.2(5)	40.7(7)	40.2(10)
Mean weight (kg)				
Preterm	1.53(11)	1.53(7)	1.43(7)	2.09(6)
Term	3.16(12)	3.05(5)	3.0(7)	3.61(10)
Mean 1 minute Apgar score				
Preterm	5.0(11)	7.7(7)	2.3(7)	7.6(6)
Term	4.4(12)	7.6(5)	2.1(7)	8.5(10)

AN = Asphyxiated Nigerian infants; CN = Control Nigerian infants;
AD = Asphyxiated Dutch infants; CD = Control Dutch infants

Table 2 Prevalence of aberrant findings from 12-lead ECG in asphyxiated Nigerian infants (AN) and controls (CN) asphyxiated Dutch infants (AD) and control (CD)

ECG FINDINGS	AN (n = 23)		CN (n = 12)		AD (n = 14)		CN (n = 16)		AN vs CN		AD vs CD		AN vs AD		CN vs CD	
	No. (%)	No. (%)	No. (%)	No. (%)	X ²	P	X ²	P	X ²	P	X ²	P	X ²	P	X ²	P
RVH	2(9)	0	3(21)	0	0.36	>0.05	1.8	0.05	0.36	0.546	-	-	-	-	-	-
ST- segment Depression	18(78)	5(42)	7(50)	0	3.20	<0.02*	7.83	0.01*	2.01	0.155	5.52	0.018*	-	-	-	-
Flat/inverted T wave in V ₅ /V ₆	9(39)	3(25)	4(29)	1(6)	0.21	>0.05	1.31	0.05	0.09	0.766	0.74	0.391	-	-	-	-

* = statistically significant difference

Table 3 Prevalence of dysrhythmias observed from 24-hour ECG recordings: in asphyxiated Nigerian (AN) and Dutch (AD) infants and their respective controls (CN) and (CD)

Dysrhythmias	AN (n = 23)		CN (n = 12)		AD (n = 14)		CD (n = 16)		AN vs CN		AD vs CD		AN vs AD		CN vs CD	
	No. of cases (%)	No. of cases (%)	No. of cases (%)	No. of cases (%)	X ²	P	X ²	P	X ²	P	X ²	P	X ²	P	X ²	P
Sinus arrhythmia	19(83)	12(100)	8(57)	16(100)	0.95	>0.05	1.80	>0.05	1.72	0.190	-	-	-	-	-	-
Sino atrial block	1 (4)	2 (17)	2 (14)	2 (13)	0.21	>0.05	>0.02	>0.05	0.21	0.650	0.05	0.815	-	-	-	-
Sinus Bradycardia	2 (9)	0	2 (14)	0	0.08	>0.05	0.004	>0.05	0.00	0.988	-	-	-	-	-	-
Sinus Tachycardia	4 (17)	2 (17)	-	-	0.35	>0.05	-	-	0.15	0.696	-	-	-	-	-	-
Sinus Bradycardia + junctional escape rhythm	0	0	3 (21)	4 (25)	-	-	0.04	>0.05	2.87	0.900	1.76	0.185	-	-	-	-
WAP	0	0	3 (21)	1 (6)	-	-	0.21	>0.05	2.87	0.900	0.02	0.883	-	-	-	-
Fixed rate	4 (17)	0	3 (21)	0	0.95	>0.05	1.8	0.05	0.02	0.897	-	-	-	-	-	-
PAC with normal Ventricular conduction	5 (22)	3 (25)	6 (43)	1 (6)	0.04	>0.05	3.37	<0.05*	0.98	0.321	0.74	0.391	-	-	-	-
PAC with aberrant ventricular conduction	3 (13)	0	1 (7)	1 (6)	0.45	>0.05	-	-	0.00	0.988	-	-	-	-	-	-
PVC (<5 in 24 hrs.)	2 (9)	0	4 (29)	0	0.08	>0.05*	3.09	<0.05*	1.28	0.258	-	-	-	-	-	-
PVC (> 5 in 24hrs)	3 (13)	0	1 (7)	1 (6)	0.45	>0.05	-	-	0.00	0.988	-	-	-	-	-	-

WAP = wandering atrial pace maker; PAC = premature atrial complex; PVC = premature ventricular complex; X = Chi square (with Yates correction); P = probability * = Statistically significant difference.

Table 4 Heart rate variations as seen from 24 hour ECG recordings in asphyxiated Nigerian and Dutch infants and their controls

Heart rates	AN (n = 23)		CN (n = 12)		AD (n = 14)		CD (n = 16)		AN vs CN		AD vs CD		AN vs AD		CN vs CD	
	Range	Mean (± SD)	Range	Mean (± SD)	Range	Mean (± SD)	Range	Mean (± SD)	t	p	t	p	t	p	t	p
Maximum	95 - 180	158 (± 23)	150 - 180	160 (± 11)	130 - 200	169 (± 23)	150 - 205	176 (± 15)	-0.283	0.778	-0.99	0.326	-1.41	0.016*	-3.114	0.004*
Minimum	20 - 150	105 (±35)	70 - 140	117 (±18)	5 - 130	91 (± 31)	32 - 130	98 (± 31)	-1.108	0.027*	-0.617	0.542	-1.230	0.027*	-1.892	0.016*
Mean	70 - 150	122 (±22)	110 - 150	133(± 13)	90 - 150	128 (± 18)	105 - 140	125 (±8)	-1.586	0.012*	-0.603	0.550	-0.859	0.396	2.011	0.054

* = Statistically significant difference

junctional escape rhythm occurred during episodes of sinus bradycardia in 3 (21%) of asphyxiated Dutch infants and in 4 (25%) of the Dutch controls but was not observed in any of the Nigerian infants. In fact, one of the Nigerian infants who had a rate of 20 beat/minute remained in sinus rhythm (figure 4) without junctional escape.

Similarly, wandering atrial pacemaker was observed in 3 (21%) of the asphyxiated Dutch infants, in 1(6%) of the Dutch controls, and in none of the Nigerian infants. The difference in prevalence between the Dutch and Nigerian subjects was however not

significant.

Atrio-ventricular Conduction

Premature atrial complexes (PAC) with normal ventricular conduction were observed in 6 (43%) of the Dutch infants and in 6% of the controls (p < 0.01). This was not the situation with the Nigerian infants amongst whom the event was observed in 5 (22%) asphyxiated infants and 3 (25%) controls (p > 0.5).

The prevalence of PACs with aberrant ventricular conduction was similar in asphyxiated Nigerian infants and controls. The same was true of the Dutch subjects, (table 3).



Fig. 1 24 Hour (Holter monitor) ECG recording in progress on a baby in a cot

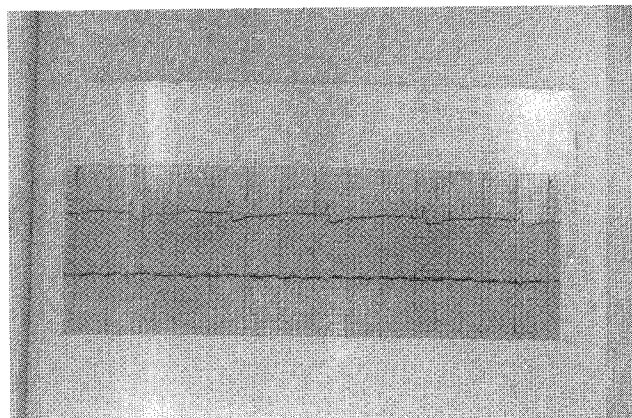


Fig. 4 Section of the 24-hour ECG strip chart recording in one of the asphyxiated Nigerian infants showing maintenance of sinus rhythm even with rates at 20bpm.



Fig. 2 The Oxford Medilog ECG analyzer with the chart recorder



Fig. 5 Section of the 24-hour ECG strip chart recording in one of the asphyxiated Nigerian infants showing uniform PVCs.

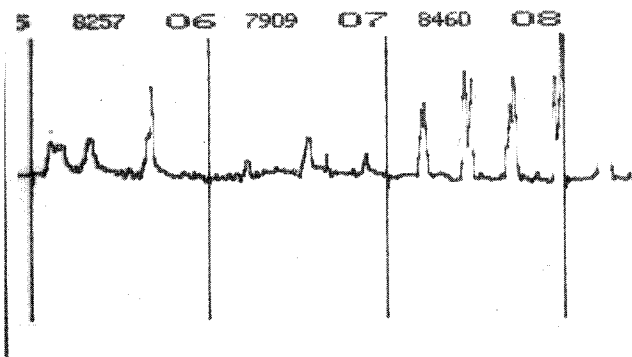


Fig. 3 Section of a 24-hour heart rate histogram

Intra-ventricular conduction

Intra-ventricular conduction defects observed were in the form of uniform premature ventricular complexes (PVC) figure 5. They were observed in 5 asphyxiated Nigerian infants and in one of the controls, ($p > 0.05$). They were also observed in 36 % of the asphyxiated Dutch infants and in 6% of the Dutch controls ($p < 0.05$). Table 3 shows other observations that were made including statistical comparisons of observations.

Rate

Sinus bradycardia (< 90 beats/minute), which tended to occur during sleep and defecation, was observed in 2 (9%) asphyxiated Nigerian infants and 2 (14%) asphyxiated Dutch infants but in none of their controls. However the differences were not statistically significant ($p > 0.05$). Sinus tachycardia on the other hand (> 180 beats/minute) which tended to occur during crying episodes did not occur in any of the asphyxiated Nigerian infants but was observed in 4 (29%) asphyxiated Dutch infants and 2 (13%) Dutch controls. The difference was not statistically significant ($p > 0.05$). Four asphyxiated Nigerian infants and 3 asphyxiated Dutch infants

who did not show sinus arrhythmia had a 'fixed rate' phenomenon. The minimum and mean heart rates were significantly lower in the asphyxiated Nigerian infants than their controls but not in the Dutch infants; the heart rate comparisons in all the groups of infants are shown in (Table 4). The comparisons of heart rates between all four groups of infants studied are shown in table 4.

Discussion

The prevalence and spectrum of clinical hypoxaemia-related cardiovascular disorders among the present study subjects have previously been reported in a separate communication¹⁰ and several other reports^{3,11,12,13} have also pointed attention to similar clinical problems causally related to asphyxia-monotomum or perinatal asphyxia.

The relatively lower 1-minute Apgar score in the AD infants (mean 2 ± 2) compared with the corresponding mean score in the AN infant (5 ± 5) probably reflects the ready availability and application of sophisticated obstetric monitoring devices and neonatal resuscitative measures in Holland allowing successful delivery of distressed fetuses that would have succumbed in-utero. This is borne out by the fresh stillbirth records from the two hospital sites of the study. There were 30 fresh stillbirth records in the 708 deliveries in the obstetric departments at the U. C. II.¹⁴ during the study period, which contrasts sharply with 8 fresh stillbirths at the A. M. C.¹⁵ in the 823 deliveries recorded during the corresponding study period. Surprisingly however, the prevalence of hypoxaemia-related cardiovascular disorders was similar in both the AD infants (64%) and AN infants (61%). We may deduce therefore, that prompt and appropriate intervention not only enhances survival in severely asphyxiated infants but also reduces the prevalence of hypoxaemia-related disorders at birth.

The advantages of long duration electrocardiographic recordings over standard 12-lead ECG in the study of cardiac dysrhythmias and heart rate variations are known¹⁶ and have been demonstrated in the present study. Whereas standard ECG indicated that all the infants were in sinus rhythm, various arrhythmias were in fact present in quite a number of the study infants as well as their controls. These included supraventricular and ventricular extrasystoles observed in 50% and 36% in the asphyxiated Nigerian and Dutch infants respectively. The finding of a significant difference in the occurrence of <5 PVC in 24 hour between the asphyxiated Dutch infants and their controls may not be regarded in itself as important. It is an acceptable finding in most newborn infants.²³ The accuracy of the scanning method used in detecting these arrhythmias might be questioned. It is recognised that the scanning method might in fact underestimate cardiac irregularities,¹⁶ Nevertheless, since the same observer scanned all recordings, such underestimation would be expected to be evenly distributed among the infants. We can therefore reasonably presume a true representation of the prevalence of dysrhythmias among the study infants as reported in the present study.

The mean maximum and minimum heart rates obtained from 24-hours ECG recordings in the asphyxiated Nigerian infants were lower than those in their controls and the same observation is true of the Dutch infants. However, when the overall mean heart rate is considered, while the difference was statistically different between the asphyxiated Nigerian infants and their controls, there was no such difference between the asphyxiated Dutch infants and their controls (table 4). This is in keeping with the previously reported^{17,18} depressant effect of perinatal asphyxia on heart rate as it relates to the Nigerian infant in the present study. The comparison between the asphyxiated Nigerian and Dutch infants and their controls show no statistical difference. The apparent differences therefore between these groups may be more a reflection of the severity of asphyxiation rather than that of ethnic difference. The occurrence of a 'fixed

heart rate' or lack of sinus arrhythmia in the asphyxiated infants and its absence in the controls is also in keeping with previous reports^{19, 20, 21} of such a phenomenon in asphyxiated infants. The asphyxiated Nigerian and Dutch infants were similar when compared ($p = 0.897$) and so were their controls. The mechanism of this phenomenon is unknown. One suggestion is that it results from the disappearance of neural control of the sinus node, possibly as a result of cerebral depression.²¹

The lower heart rates and 'fixed heart rate' phenomenon were thus the only disorder of rate and rhythm that may be attributed to perinatal asphyxia since other dysrhythmias were similarly prevalent in both the subjects and controls.

It is remarkable that sinus bradycardia with junctional escape did not occur in any of the Nigerian infants but was found in a relatively high proportion of the asphyxiated Dutch infants. The reason for this is uncertain, but it is tempting to relate it to the relatively advanced neural development. By the sixth to eighth week of foetal development, the human heart has attained most of its adult characteristics and the sinus node is readily discernible.²² At birth primitive (P) and transitional (T) cells are readily distinguishable even on light microscopy, but there continues to be differentiation within the first few years of life.²³ The P cells are believed to make up the cardiac pacemaker and are quite predominant in early life but decreases in prevalence with aging.²² The T cells on the other hand are less common in the newborn period and increase in proportion with age.²² It is postulated that the T cell probably serve to organise or filter the impulses that are generated by the P cells and transmit them to the cells of the internodal tracts.²² The relative paucity of T cells early in life (and the concomitant P cell predominance) might allow irregular or asynchronous transmission of P cell impulses to the atria, which later in life, might be organised by the more dense network of T cells. Thus the maintenance of sinus rhythm even at low rates may indicate that the sinus node of the African (Nigerian) infant is more advanced in development than that in the Caucasian in terms of prevalence of T cells and neutral control. In this regard, it is worth noting that several studies have suggested that the African infant is more mature neurologically at birth and during the first year of life than his Caucasian counterpart.^{24, 25} The ST segment depression demonstrated in asphyxiated Dutch and Nigerian infants in mid-precordial leads probably have different implication. ST segment depression in the mid-precordial leads has been reported as normal in young Africans^{26, 27, 28} but is seen in Caucasians of the same age group. This is borne out in the present study. Whereas it was observed in 42% of the healthy Nigerian controls, it was not observed at all in the healthy Dutch controls and the difference was statistically significant (table 2). The implications are obvious; whereas ST-segment depression may be taken as a good indicator of myocardial ischaemia in Dutch infants, it may not have such a significance in the Nigerian infant. Although the phenomenon of flat or inverted T wave in V_5 and V_6 is recognised as a sign of left ventricular overwork,^{29,30} it may occur normally during the first 3 days of life.^{29, 30} The ECG's in the present series were recorded within the first 24 hours of life. Therefore, not much significance may be attached to flat/inverted waves in V_5 or V_6 except of course, where such changes coexist with other clinical signs as frank cardiogenic shock.

In conclusion, the 'fixed heart rate' phenomenon and generally slower heart rates were the forms of dysrhythmias for which asphyxia was found to play a causal role. None of the other forms of dysrhythmias documented could be said to be specific to asphyxiated infants in the present study. Racial differences were found only with respect to the ability of the Nigerian infants to remain in sinus rhythm even at very slow heart rates. In addition, whereas ST segments depression in the mid-precordial lead may signify myocardial ischaemia in the Dutch infants, such a

significance may not be readily attached to it in Nigerian infants.

Acknowledgement

We gratefully acknowledge the technical assistance of Mrs Jany Biescheuvel and Mrs Helene Heijen who analyzed the 24 hour ECG recordings. We also gratefully acknowledge the assistance of Professor A. J. Dunning who consented to the provision of the Holter monitors which were used for the Nigeria phases of the study. Finally we gratefully acknowledge the assistance of Nursing staff of both the neonatal intensive care at AMC and the Special Care Baby Unit at UCH in keeping the log sheets on each baby during the 24 hour Holter ECG recording exercises on each baby studied.

References

1. Jones R W A, Sharp C, Rabb L R, Lambert B R and Chamberlain D A: neonatal electrocardiograms. *Arch Dis Child* 1979; 1028: 54, 427.
2. Jaiyesimi O: Recognition and management of childhood cardiac arrhythmias. *Annals Trop Paediatr.* 1998; 18: 173 - 185.
3. Tanel R E and Rhodes L A: Fetal and neonatal arrhythmias. *Clin Perinatology* 2001; 28:(10): 187 - 207.
4. Kubber W: Comparative metabolism of contractile and conductive tissue. *Proc 7th Euro Congr Cardiol Amsterdam* 1976; 2: 127.
5. Yen M, Merishima H O, Niemann W H and James L. S.: Myocardial conduction defects in association with compression of the umbilical cord: Experimental observations on fetal baboons. *Am J Obstet Gynaecol* 1975: 121; 195.
6. Davignon A Rautaharjun O, Soumis F, Megelas M and Choquette A: Normal ECG standards for infants and children *Padiatr Cardiol* 1979/1980; (1); 123.
7. Special Report: Definition of terms related to cardiac rhythm WHO/ISC Task Force *Am Heart J* 1978: 95(6): 796.
8. Special Report: Classification of cardiac arrhythmias and conduction disturbances. WHO/ISC Task Force *Am Heart J*: 1979: 98(2) 263.
9. Blackburn H: The exercise electrocardiogram: Technological procedural and conceptual development In: Charles Thomas E (ed): *Measurement in exercise electrocardiography.* Springfield 1967: 89.
10. Omokhodion S I, Losekoot T G and Jaiyesimi F: Serum creatinine kinase and creatinine kinase MB isoenzyme activities in perinatally asphyxiated newborns *Euro Heart J* 1991: (12); 980 - 984.
11. Rowe R D: Transient myocardial ischaemia of the newborn infant: a form of severe cardiorespiratory distress in full term infants *J. Padiatr* 1972; (81) 243.
12. Less M H and King O H Cardiogenic shock in the neonate *Pediatr Rev* 1988; (9): 258 - 66.
13. Ranjit M S: Cardiac abnormalities in birth asphyxia. *Indian J Padiatr* 2000; 67(3 Suppl): S26-9.
14. The University College Hospital Ibadan Labour Ward records 1985.
15. The Academic Medical Centre Amsterdam Labour Ward records 1985.
16. Morgan B. C., Bloom S. R. and Guntheroth W. G.: Cardiac arrhythmias in premature infants *Pediatrics*: 1965; (35): 658.
17. Ferrer P L: Arrhythmia in the neonate: In Roberts N. K., Gelband H (ed) *Arrhythmias in the neonate, infant and child.* Appleton-Century - Croft New York p. 1977; p. 256 - 316.
18. Gidvani C H, Raju U, Chandar V, Gosh B and Wilson C G: ECG changes in asphyxia neonatorum. *Indian Padiatr* 1990; 27(11): 1177 - 81.
19. Landtman B Heart arrhythmias in children. *Acta Paediatr Scand* 1947: 34(Suppl 64): 1.
20. Vallbona C, Rudolph A J and Desmond M M: Cardiodynamic studies in the newborn IV. Heart rate patterns in the non-distressed premature infant. *Pediatrics* 1965: (36): 560.
21. Vallbona C, Rudolph A J and Desmond M M: Cardiodynamic studies in the newborn III: Heart rate patterns in infants with idiopathic distress syndrome *Pediatrics* 1965: (36); 551.
22. Duckworth J W A: The development of sino-atrial and atrioventricular nodes of the human heart. (MD Thesis) Department of Anatomy, University of Edinburgh, 1952 as cited in Liebman J.: *Anatomy of the Cardiac conducting system* in Liebman J. Plonsey R and Gillette P (ed) *Pediatric Electrocardiography.* Williams and Wilkins p. 16 - 20.
23. James T N: Cardiac conduction system: Fetal and postnatal development *Am. J Cardiol* 1970; (25); 213
24. Geber M: The psychomotor development of African children in the first year and the influence of maternal behaviour. *J Soc Psychol* 1958; (185); 47.
26. Grusin H: Peculiarities of the African ECG and the changes observed in serial studies. *Circulation*:. 1954; (9): 860.
27. Powell S J: Unexplained ECGs in the African *Br. Heart J* 1959; (21); 263.
28. Somerss K and Rankin A M: The ECG in healthy East African (Bantu and Nilotic) men, Bri. *Heart J*: 1962: (24) 542.
29. Hastreiter A R and Abella J B: The electrocardiogram in the newborn period II: The infant with disease *J Padiatr* 1971: 78(2): 346.
30. Moak J P: Mechanism of cardiac arrhythmias. In Garson A, Briket J T and Namara D G: eds. *The science and practice of paediatric Cardiology.* Philadelphia: Lea and Febiger, 2000; 411 - 17.