

Original Research Article

Antitumor activity of physcion 8-o- β -glucopyranoside against cervical cancer by induction of apoptosis

Yuan-Qi He^{1,2}, Hai-Ning Liu², Xiao-Xiao Li² and Guo-Yun Wang^{3*}

¹Department of Obstetrics and Gynaecology, Shandong University, Jinan 250000, ²Department of Obstetrics and Gynecology, Weihai Municipal Hospital, Weihai 264200, ³Department of Obstetrics and Gynecology, Qilu Hospital of Shandong University, Jinan 250000, Shandong, China

*For correspondence: **Email:** doctorguoyun@126.com; **Tel/Fax:** +86-0531-82169114

Received: 4 January 2016

Revised accepted: 17 May 2016

Abstract

Purpose: To investigate the antitumor activity of physcion 8-O- β -glucopyranoside (PSG) against cervical cancer, as well as its mechanisms.

Methods: The anti-proliferative effects of PSG on HeLa cells were determined by CCK-8 assay and the half maximal inhibitory concentration (IC_{50}) values were calculated. Subsequently, a mouse xenograft model of HeLa cell line was established to investigate the antitumor effect of PSG in vivo. Furthermore, cell apoptosis was investigated by fluorescence microscopy via DAPI staining, and other mechanisms were determined by Western blot assay.

Results: In vitro, PSG exhibited significant anti-proliferative effect on HeLa cells ($p < 0.05$) in concentration- and time-dependent manners, with an IC_{50} value of 41.34 $\mu\text{g/mL}$. In vivo, PSG also had significant anti-tumor activity in nude mouse xenograft model ($p < 0.05$), inhibiting tumor growth. Furthermore, the results showed that treatment with PSG (20, 40 and 60 $\mu\text{g/mL}$) for 24 h resulted in significantly increased apoptosis in HeLa cells ($p < 0.05$). Additionally, Western blot analysis revealed that after exposure to 20, 40 and 60 $\mu\text{g/mL}$ of PSG for 24 h, protein expressions of C-caspase-3, C-caspase-9 and Bax were markedly up-regulated ($p < 0.05$) while Bcl-2 was significantly down-regulated ($p < 0.05$). These results confirmed that PSG inhibited HeLa cell growth by inducing mitochondria-mediated apoptosis via up-regulation of caspase-3 and caspase-9 and Bax, and down-regulation of Bcl-2.

Conclusion: The results demonstrate that PSG possesses notable anti-tumor activity against cervical cancer and that the mechanisms involve induction of apoptosis by mitochondria-mediated signaling pathway.

Keywords: Physcion 8-O- β -glucopyranoside, Cervical cancer, Apoptosis, HeLa cells, Caspase, Anti-tumour, Mouse xenograft

Tropical Journal of Pharmaceutical Research is indexed by Science Citation Index (SciSearch), Scopus, International Pharmaceutical Abstract, Chemical Abstracts, Embase, Index Copernicus, EBSCO, African Index Medicus, JournalSeek, Journal Citation Reports/Science Edition, Directory of Open Access Journals (DOAJ), African Journal Online, Bioline International, Open-J-Gate and Pharmacy Abstracts

INTRODUCTION

In spite of the improvements that have been achieved in diagnostic and screening techniques, cervical cancer still remains the fourth leading cause of cancer related deaths among women worldwide and the second cause of deaths among women in developing countries [1,2]. The

average age of patients with recurrent cervical carcinoma is about 40 - 45 years [3]. In addition, the recurrence for stages III and IVA is 42 and 74 %, respectively. At present, chemotherapy or neoadjuvant chemotherapy is always the first choice for those patients with advanced cervical cancer, whereas the overall survival remains poor [4]. Therefore, there is an urgent need to

find effective drugs or therapeutic methods to treat cervical cancer. It has been reported that natural products derived from plants and microorganisms have anticancer activities, which provide useful clues for discovering new anticancer drugs.

Physcion 8-O- β -glucopyranoside (PSG) is an anthraquinone (Fig 1) extracted from *Rumex japonicas* Hoult [5]. *Rumex japonicas* Hoult, a perennial herb plant belonging to the family Polygonaceae, is widely distributed in China and recorded [6]. It has been traditionally used in folk medicine for relieving bowel movement, stopping bleeding and as an antipruritic agent [6]. At present, it is recognized that *R. japonicas* has new pharmacological activities such as anti-microorganism, anti-oxidant, anti-inflammatory and anti-tumor [7-10]. In addition, a large number of bioactive compounds have been found in *R. japonicas*, including anthraquinones, emodin, chrysophanol, physcion, fatty acids, condensed tannins, and so on [11-13].

PSG is one of the major bioactive compounds present in *R. japonicas*, and has been reported to have significant anti-proliferative activity on A549 cell lines by inducing apoptosis and cell cycle arrest [5]. However, to the best of our knowledge, the anti-cervical cancer effects of PSG isolated from *R. japonicas* has not been researched at present. In our present work, we focus on the anti-tumor effect of PSG in human cervical cancer cell line HeLa *in vitro* and *in vivo*, and explore the possible mechanisms, which may provide a scientific basis for treating this disease in clinic.

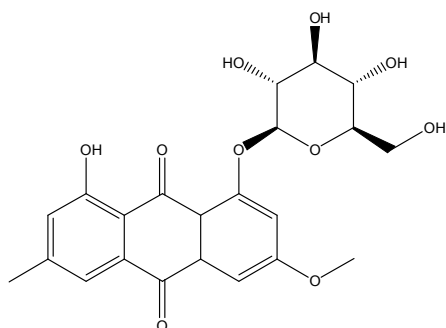


Figure 1: Structure of physcion 8-O- β -glucopyranoside (PSG)

EXPERIMENTAL

Chemicals

Physcion 8-O- β -glucopyranoside (PSG) was purchased from the Sichuan Keluoma Biotech.

Co. (Chengdu, China) and was isolated from the dry root of *R. japonicas* with purity of more than 98 %. Dulbecco's Modified Eagle Medium (DMEM) and fetal bovine serum (FBS) were purchased from Life Technologies Inc (Gibco BRL); Penicillin-Streptomycin Solution (100X), cell counting kit-8, cell lysis buffer for Western and IP, BCA protein assay kit, BeyoECL Plus, 2-(4-Aminodiphenyl)-6-indolecarbamide dihydrochloride (DAPI), horseradish-peroxidase (HRP) -labeled goat anti-rabbit IgG (H+L) were purchased from Beyotime (Haimen, China); cleaved-caspase-3 (c-caspase-3), cleaved-caspase-9 (c-caspase-9) antibodies were purchased from Cell Signaling Technology (Beverly, MA, USA); Bcl-2, Bax and β -actin antibodies were purchased from Abcam Biotechnology (Cambridge, MA, USA); all other chemicals used in this study were of analytical grade.

Cell culture

Immortalized human cervical cells (HeLa cells) were obtained from the Shanghai cell bank of Chinese academy of sciences (Shanghai, China). Cells were cultured in DMEM medium supplemented with 10 % FBS and antibiotics (100 U/mL penicillin G and 100 mg/mL of streptomycin) and maintained in a humidified atmosphere containing 5 % CO₂ at 37 °C.

Cell viability assay by CCK-8

Cell viability was carried out using the CCK-8 assay. In Brief, HeLa cells were cultured until they reached approximately 90 % confluency before preparing the plates for the cell viability assay. Cells were seeded in 96-well plates at 5×10^3 cells per well and grown for 24 h. Then, cells were treated with various concentrations of PSG (5, 10, 20, 40, 60, 80 and 100 μ g/mL) for 24 h and then the cell proliferation inhibition was determined by CCK-8 following the manufacturer's instructions. Optical density values (OD) were measured at 570 nm by a microplate reader (Bio-Rad, CA, USA) and the IC₅₀ value of PSG on HeLa cells was calculated. Furthermore, for determining the time-dependent manner, HeLa cells were treated with PSG (40 μ g/mL) for 12, 24, 36, 48, and 72 h, respectively; then, CCK-8 assay was used to determine the cell proliferation inhibition. The inhibition rate was calculated according to Eq 1.

$$\text{Inhibition (\%)} = \{(Ac - At)/Ac\}100 \dots\dots\dots (1)$$

where Ac and At are the absorbance of control and treated samples, respectively.

Xenograft model of nude mice

The antitumor effect of PSG *in vivo* was evaluated with the animal tumor model by inoculation of HeLa cells as previously reported [14]. BALB/C nude mice were randomly divided into control group (0.5 % DMSO, 0.1 mL/10g) and PSG treatment group (10, 20, and 40 mg/kg/d, i.p.), each group contained 5 mice. Nude mice (18-22 g) were injected subcutaneously in the right flank with HeLa cells (2.0×10^6 /mouse).

When the tumor grew to approximately 2 – 3 mm in diameter, mice were treated with various concentrations of PSG (intraperitoneal injection, i.p.) and equal volume of solvent control (0.5 % DMSO, i.p.), respectively. Drugs were treated for consecutive 15 days and tumor sizes (width and length) were measured at 0, 5, 8, 12 and 15 days. Finally, the tumor volumes were determined using the formula: volume = (width² × length)/2.

Nuclear staining with DAPI

Cell apoptosis analysis was determined by DAPI staining assay. About 1×10^5 HeLa cells per well were cultured in 12-well plates and were treated with PSG (20, 40 and 60 $\mu\text{g}/\text{mL}$) for 24 h. Then, cells were stained with 10 $\mu\text{g}/\text{mL}$ of DAPI for 10 min at 37 °C, in the dark. Finally, the changes in the cells' nuclei were observed with a fluorescence microscope (Olympus, IX53, Tokyo, Japan).

Western blot assay

HeLa cells (1×10^6 cells/flask) were seeded in T-25 flasks and were treated with PSG 20, 40 and 60 $\mu\text{g}/\text{mL}$ of PSG, then 24 h later, cells were

harvested and total proteins were extracted with cell lysis buffer for western and IP. Subsequently, the protein concentration was determined by the BCA protein assay kit. Then, equal amount of total protein (40 μg) were separated by the sodium dodecyl sulfate polyacrylamide gel electrophoresis (SDS/PAGE). After that, all proteins were transferred to PVDF membranes and probed with caspase-3, caspase-9, Bax, Bcl-2 and β -actin monoclonal antibodies, respectively. After 12 h of incubation at 4 °C, HRP labeled secondary antibody was added and incubated for 2 h at 37 °C. Finally, protein bands were detected by Beyo ECL Plus kit (chemiluminescence). To normalize for protein loading, the Bio-Rad quantity one software was used to quantify the blot density and the proteins expression levels were expressed as a relative value to that of β -actin.

Statistical analysis

All values are represented as mean \pm standard deviation (SD, n = 3). Statistical analysis was performed by two-tailed Student's t-test using SPSS 19.0 software, and differences were considered significant at $p < 0.05$.

RESULTS

Inhibitory effect of PSG on cervical cancer *in vitro*

The anti-cervical cancer activity of PSG was determined by CCK-8 in HeLa cells. As can be seen from Fig 2A, PSG exhibited significant anti-proliferative effects in concentration-dependent manner on HeLa cell, and the IC_{50} value was 41.34 $\mu\text{g}/\text{mL}$. Furthermore, the anti-proliferative effect of PSG was also time-dependent (Fig 2B).

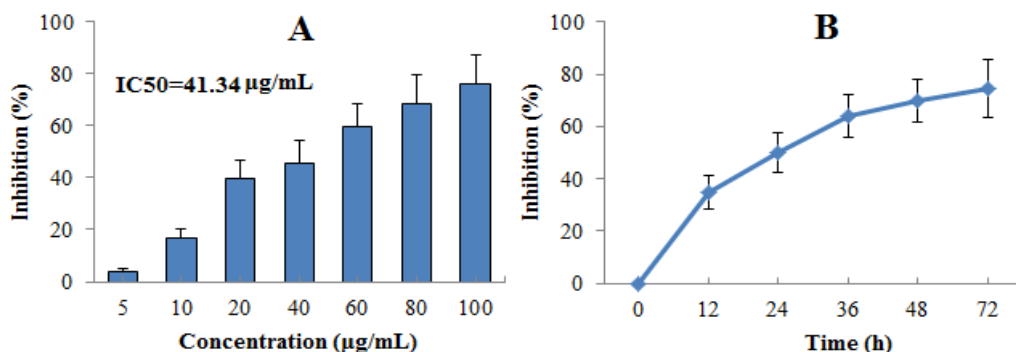


Figure 2: Inhibitory effect of PSG on proliferation of HeLa cells *in vitro*. (A) Cells were treated with PSG at 5, 10, 20, 40, 60, 80 and 100 $\mu\text{g}/\text{mL}$ for 24 h; then, CCK-8 assay was used to determine the cell proliferation inhibition (%), n = 4). (B) Cells were treated with 40 $\mu\text{g}/\text{mL}$ PSG for 12, 24, 36, 48, and 72 h, respectively; then, CCK-8 assay was used to determine the cell proliferation inhibition (%) (n = 4)

Inhibitory effect of PSG on cervical cancer *in vivo*

To further explore the anti-cervical cancer activity of PSG *in vivo*, PSG treatment was performed in the nude mouse xenograft model with HeLa cells. As shown in Fig 3, PSG (10, 20 and 40 mg/kg, ip) significantly reduced tumor volume as compared to the solvent control group ($p < 0.05$, $p < 0.01$, $p < 0.01$), especially at dose of 40 mg/kg and at day 15.

Pro-apoptotic effect of PSG on HeLa cell

According to the results above, PSG showed obvious anti-tumor activity on the human cervical cancer cell *in vitro* and *in vivo*. To explore whether the anti-tumor activity of PSG was related to apoptosis, HeLa cells were stained with DAPI. As shown in Fig 4, after treatment with PSG (20, 40, 60 $\mu\text{g/mL}$), cells exhibited obvious apoptosis features such as improved brightness, nuclear condensation and nuclear fragmentation. This result suggested that the anti-proliferative effect of PSG might be related to induction of apoptosis.

Effect of PSG on protein expression of caspase-3, caspase-9, Bax, Bcl-2 in HeLa cell

To further investigate the possible mechanism by which PSG induces apoptosis in HeLa cells, C-caspase-3, C-caspase-9, Bcl-2 and Bax protein expression levels were studied by western blot. As shown in Fig 5, there was significant difference between untreated HeLa cells and PSG treatment group for all these protein

expressions. Interestingly, compared to the control group, the protein expression levels of Caspase-3, Caspase-9 and Bax were gradually up-regulated with increased concentrations of PSG (20, 40, 60 $\mu\text{g/mL}$, $p < 0.05$, $p < 0.01$, $p < 0.01$, respectively), whereas Bcl-2 protein expression was down-regulated significantly ($p < 0.01$) in a concentration-dependent manner.

DISCUSSION

To the best of our knowledge, this study is the first report regarding the antitumor effect of PSG on human cervical cancer cell line *in vitro* and *in vivo*. Furthermore, we first investigated the possible mechanisms of PSG on human cervical cancer cell line HeLa in our present study. The findings of the present study showed that PSG significantly inhibited cell proliferation in concentration-and time-dependent manners in HeLa cells. And PSG also reduced the tumor growth in nude mouse xenograft model with HeLa cells in a dose-dependent manner. In addition, we also found that exposure of HeLa cells to PSG leads to a marked increase in apoptosis, indicating that apoptosis contributes to growth inhibition in PSG-treated HeLa cells.

Apoptosis, known as programmed cell death (PCD), is important for both health and disease and is one of the major mechanisms of cell death in response to cancer therapies [5,15]. Apoptosis mechanisms are highly complex. It is recognized that apoptosis is mediated by the extrinsic (death receptor) pathway, intrinsic (mitochondrial) pathway, and perforin/granzyme pathway [15].

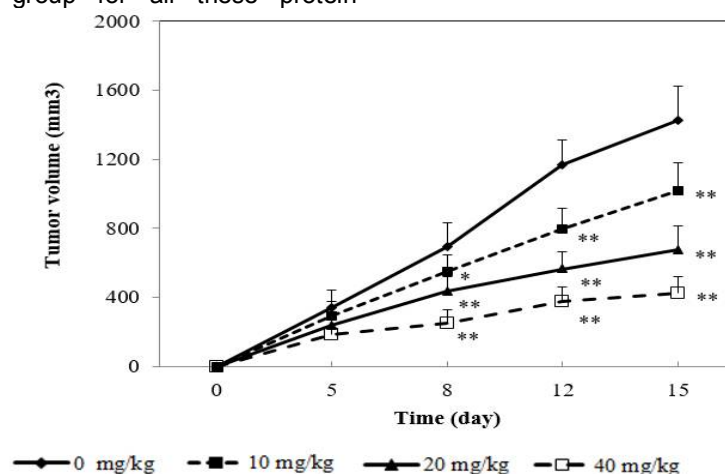


Figure 3: Effect of PSG on Hela cells *in vivo*. BALB/C nude mice were inoculated subcutaneously with Hela cells (2×10^6 /mouse). Mice were randomized into control group (0.5% DMSO, 0.1 mL/10g) and PSG treatment group (10, 20, and 40 mg/kg/d, i.p.), each group contained 5 mice. Drugs were administered for consecutive 15 days after the tumors grew to approximately 2 – 3 mm in diameter. Data were expressed as mean \pm SD; * $p < 0.05$, ** $p < 0.01$, compared with control mice

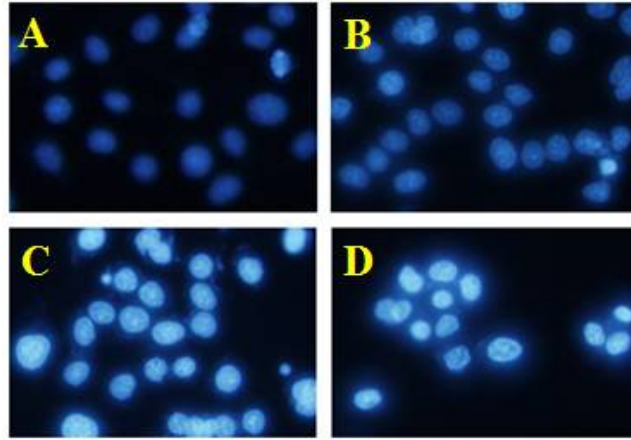


Figure 4: Apoptotic effects of PSG on HeLa cells by DAPI staining. Cells were treated with PSG (20, 40 and 60 µg/mL) for 24 h, and the apoptotic cells were detected by DAPI staining and visualized under a fluorescent microscope (200×). A-D represented the control, and PSG of 20, 40 and 60 µg/mL, respectively

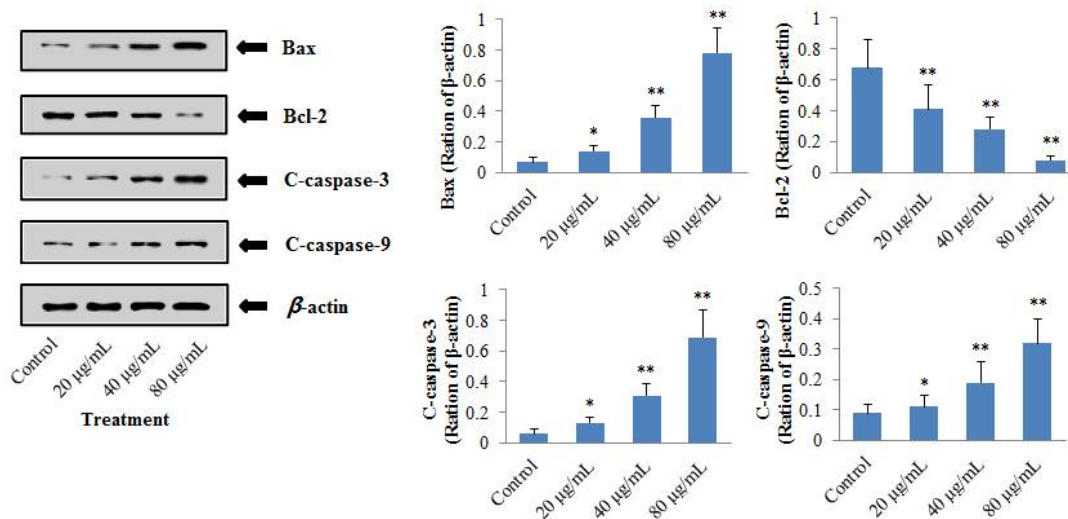


Figure 5: Effects of PSG on expressions of Bcl-2, Bax and caspase family of proteins. Cells were treated with PSG for 24 h; then, the total proteins were extracted and subjected to western blot analysis using antibodies against Bax, Bcl-2, C-caspase-3, C-caspase-9, and β-actin was used an internal control. Data were expressed as mean ± SD (n = 4), and asterisk indicated significant difference, * $p < 0.05$, ** $p < 0.01$

Each pathway is initiated by its own signalling molecules like caspases. For example, the extrinsic, intrinsic and granzyme B pathways can be initiated by caspase-8, caspase-9 and casepase-10, respectively. Once caspases are activated, the apoptotic signaling pathway will be activated resulting in cell death. Caspase-3 is the most important effector or executioner of the extrinsic, intrinsic and granzyme B pathway [15,16]. In our experiment, PSG significantly increased the protein expression of cleaved-caspase-3 and cleaved-caspase-9 in HeLa cells, which indicated that the PSG-induced apoptosis process is due to activation of the mitochondrial pathway.

Furthermore, it has been reported that the Bcl-2 family of proteins play a critical role in control and regulation of mitochondrial mediated apoptotic pathway, because the mitochondrial membrane permeability is governed by this family of proteins [17]. The Bcl-2 family proteins have pro-apoptotic and anti-apoptotic effects. Bax is a critical pro-apoptotic protein while Bcl-2 is an important anti-apoptotic protein [18]. Bcl-2 is an integral membrane protein, which causes anti-apoptosis mainly by preventing mitochondrial outer membrane permeabilization. However, if the effect of Bcl-2 is suppressed, Bax oligomerization takes place and thus leads to apoptosis. Activation of Bax can result in the release of the contents of the mitochondrial inter-membrane

space, which then activates caspases and leads to a series of cascade reactions that result in cell death [17]. Our results demonstrated that exposure of PSG to HeLa cells leads to up-regulation of Bax protein while it down regulates Bcl-2 protein.

CONCLUSION

The findings of the present study suggest that PSG possesses antitumor effect against human cervical cancer cell line by inducing mitochondrial-mediated apoptosis via up-regulation of caspase-3, caspase-9 and Bax, as well as down-regulation of Bcl-2.

REFERENCES

1. Origoni M, Prendiville W, Paraskevaids E. Cervical Cancer Prevention: New Frontiers of Diagnostic Strategies. *BioMed Res Int* 2015.
2. Qureshi R, Arora H, Rizvi M. EMT in cervical cancer: Its role in tumour progression and response to therapy. *Cancer Lett* 2015; 356(2): 321-331.
3. Peiretti M, Zapardiel I, Zanagnolo V, Landoni F, Morrow C, Maggioni A. Management of recurrent cervical cancer: a review of the literature. *Surg Oncol* 2012; 21(2): 59-66.
4. Li HN, Nie FF, Liu W, Dai QS, Lu N, Qi Q, Li ZY, You QD, Guo QL. Apoptosis induction of oroxylin A in human cervical cancer HeLa cell line in vitro and in vivo. *Toxicology* 2009; 257(1): 80-85.
5. Xie QC, Yang YP. Anti-proliferative of physcion 8-O-beta-glucopyranoside isolated from *Rumex japonicus* Houtt. on A549 cell lines via inducing apoptosis and cell cycle arrest. *BMC Complem Altern Med* 2014; 14(1): 377.
6. Wang L, Jiang YF, Wu C, Li Y. Study on chemical composition and biological activity of Chinese medicine *Rumex japonicas* Houtt. *World Latest Med Inform* 2015; 15(12): 82.
7. Cai QY, Lu J, Lu SS. Protective Effect of *Rumex Japonicus* Total Saponins on Liver Injury Induced by CCl₄ in Mice. *World J Integrat Tradit West Med* 2015; 10(8): 1079-1080.
8. Huh J, Cho H, Park K, Park S. Anti-inflammatory Effect of *Rumex japonicus* HOUTT. in RAW264.7cells. *Korea J Herbol* 2012; 27(4): 99-107.
9. Atsuyoshi N, Kohji K, Toshiniko O. Antimicrobial components trachytosone and 2-methoxystypandrone in *Rumex japonicus* Houtt. *J Agri Food Chem* 1993; 41(10): 1772.
10. Elzaawely AA, Xuan TD, Tawata S. Antioxidant and antibacterial activities of *Rumex japonicus* Houtt. aerial parts. *Biol Pharm Bull* 2005; 28(12): 2225-2230.
11. Ma JK, Lei JT, Ge SC. Study on the chemical constituents of *Rumex japonicus* Houtt. *J JL Med Coll* 2011; 32(3): 133-134.
12. Zheng SQ, TAO ZY, Yuan Y, Li B, Qiao CZ. Study on the chemical constituents of *Rumex japonicus* Houtt.(I). *Acad J SMMU* 2000; 21(10): 910-913.
13. Guo S, Feng B, Zhu R, Ma J, Wang W. Preparative isolation of three anthraquinones from *Rumex japonicus* by high-speed counter-current chromatography. *Molecules* 2011; 16(2): 1201-1210.
14. Peng W, Wu JG, Jiang YB, Liu YJ, Sun T, Wu N, Wu CJ. Antitumor activity of 4-O-(2-O-acetyl-6-O-p-coumaroyl- β -d-glucopyranosyl)-p-coumaric acid against lung cancers via mitochondrial-mediated apoptosis. *Chem-Biol Interact* 2015; 233: 8-13.
15. Elmore S. Apoptosis: a review of programmed cell death. *Toxicol Pathol* 2007; 35(4): 495-516.
16. Ashkenazi A, Salvesen G. Regulated cell death: signaling and mechanisms. *Annu Rev Cell Dev Biol* 2014; 30: 337-356.
17. Ola MS, Nawaz M, Ahsan H. Role of Bcl-2 family proteins and caspases in the regulation of apoptosis. *Mol Cell Biochem* 2011; 351(1-2): 41-58.
18. Estaquier J, Vallette F, Vayssiere JL, Mignotte B. The mitochondrial pathways of apoptosis. *Adv Mitochondr Med.* 2012: 157-183.