

Original Research Article

Evaluation of Antiproliferative Activity of Some Traditional Anticancer Herbal Remedies from Jordan

Eman Y Abu-rish^{1*}, Violet Kasabri¹, Mohammad M Hudaib¹, Sundus H Mashalla¹, Loay H AlAlawi¹, Khaled Tawaha¹, Mohammad K Mohammad¹, Yehia S Mohamed² and Yasser Bustanji¹

¹Faculty of Pharmacy, University of Jordan, Amman, Jordan, ²Department of Microbiology, University of Dammam, Saudi Arabia

*For correspondence: **Email:** e.aburish@ju.edu.jo; **Tel:** +962 6 5355000 ext 23372; **Fax:** +962 6 5300250

Received: 10 May 2015

Revised accepted: 23 December 2015

Abstract

Purpose: To evaluate the *in vitro* antiproliferative activity of the extracts of the three plants against a panel of human tumor cell lines representing the most common types of cancer in Jordan, viz, breast and colorectal and skin cancers.

Methods: The methanol extracts of the aerial parts of the three plants (*Arbutus andrachne* L., *Chrysanthemum coronarium* L., and *Teucrium polium* L.) were prepared and assessed for antiproliferative activity against six human tumor cell lines (A375.S2, WM1361A, CACO-2, HRT18, MCF-7, T47D) using 3-(4,5-dimethylthiazol-2-yl)-2,5-diphenyltetrazolium bromide MTT cell proliferation assay.

Results: *C. coronarium* extract, at the concentration range of 25 to 400 µg/mL, significantly inhibited (10 – 50 %) the proliferation of the 6 cell lines in a dose-dependent manner, whilst the extracts of the other two plants exhibited weak antiproliferative activity (2 – 10 % inhibition). The half-maximal inhibitory concentration (IC₅₀) values of *C. coronarium* extract against the six cell lines were in the range of 75.8 to 138.5 µg/mL.

Conclusion: The methanol extract of the aerial parts *C. coronarium* possesses a relatively potent antiproliferative activity and therefore might be a potential source of natural compounds that can be developed into new antineoplastic agents.

Keywords: Antiproliferative, *Arbutus andrachne* L., *Chrysanthemum coronarium* L., *Teucrium polium* L. Jordan flora, Medicinal plants, Cancer, Antineoplastic

Tropical Journal of Pharmaceutical Research is indexed by Science Citation Index (SciSearch), Scopus, International Pharmaceutical Abstract, Chemical Abstracts, Embase, Index Copernicus, EBSCO, African Index Medicus, JournalSeek, Journal Citation Reports/Science Edition, Directory of Open Access Journals (DOAJ), African Journal Online, Bioline International, Open-J-Gate and Pharmacy Abstracts

INTRODUCTION

Cancer is one of the leading causes of death worldwide. The global incidence of cancer is in continuous rise in concomitance with the presence of cancer therapy-related problems. The emergence of resistance, the high toxicity and the high cost of many anticancer agents are some of the reasons that limited their use in clinical settings [1]. Therefore, large bulk of

research is now focused on finding new anticancer agents to address these issues.

Screening plants for anticancer activity has been a historically important field of research that has resulted in the introduction of several anticancer drugs to the market. Some of these are vinca alkaloids (vinblastine and vincristine) that were isolated from *Catharanthus roseus* and taxol

(paclitaxel) that was isolated from *Taxus brevifolia* in the 1970s [2].

Plant-derived natural products are a potential source of cheap antineoplastic agents. Currently, this is of particular importance in developing countries where cancer-related economic burden is high [3]. Therefore, various research groups in these countries are investigating medicinal plants for cytotoxic activities [4-5].

In Jordan, one of the developing countries, cancer is the second leading cause of death after heart diseases, and the resources assigned for cancer treatment are limited [6]. Hence, searching for medicinal plants with antineoplastic activity is becoming popular among the scientific community in Jordan [7-9]. According to the cancer registry in Jordan, breast cancer is the most common type of cancer followed by colorectal carcinoma [6]. Therefore, it is important to find cheaper alternative to the conventional anticancer agents used for the treatment of these types of cancer. Skin cancer, for example, despite its low incidence in Jordan, is traditionally treated with topical herbal preparations as they provide a relatively safe and readily available choice of therapy for this type of cancer [6].

Arbutus andrachne L., *Chrysanthemum coronarium* L. and *Teucrium polium* L. are three medicinal plants from Jordan flora, and are of Mediterranean origin [10]. These plants have been used in folk medicine for the management of a range of medical conditions including cancer, and have several reported pharmacological activities that are relevant to anticancer activity [11-12]. However, little is known about the antiproliferative effects of these plants on breast, colorectal and skin cancer. Consequently, the aim of the current study is to investigate the *in vitro* antiproliferative activity of these plants on human tumor cell lines representing the aforementioned types of cancer.

EXPERIMENTAL

Plant materials

Aerial parts of the plants under investigation (*Arbutus andrachne* L., *Chrysanthemum coronarium* L., and *Teucrium polium* L.) (see Table 1) were collected from Northern Jordan. Verification of the taxonomic identity of each plant was performed by Dr. Khaled Tawaha (Faculty of Pharmacy, Amman, Jordan) and voucher specimens of the plants were deposited there (Table 1).

Table 1: Characteristics of the plants investigated in this study

Plant scientific name (voucher code)	Family	Common name	Local Arabic name (Jordan)	Part used	Reported pharmacological activities	Ethnopharmacological uses
<i>Arbutus andrachne</i> L. (AA-MJ)	Ericaceae	Grecian strawberry	Qayqab	Aerial parts	Weak antiproliferative effect [7]; Antioxidant effect [13]	Kidney disease, blood tonic and cancer [10]
<i>Chrysanthemum coronarium</i> L. (CC-MJ)	Asteraceae	Crown daisy or Garland	Besbas or Bassoum	Aerial parts	Antioxidant; antiangiogenic action [11]; cytotoxic activity (volatile oils) [14]; activation of type-1 immunity [12]; Xanthine oxidase inhibitory effect [15]; antihypercholesterolemic and antihyperglycemic activities in rats [16]	Antispasmodic, edible (cheese preparation) [10]; diuretic [14]
<i>Teucrium Polium</i> L. (TP-MJ)	Lamiaceae	Felty Germander	Jeada	Aerial parts	Anti-inflammatory, antioxidant, cytotoxic, hepatoprotective, antispasmodic, hypolipidemic, hypoglycemic [17]	Anti-inflammatory, antispasmodic, Anti-flatulent, anti-diabetic, for kidney stones and for cancer [17]

Plant extraction

The plant materials were air-dried under shade at room temperature (22 – 23 °C), and then separately homogenized into fine powder. The powdered materials were stored in airtight amber glass containers prior to extraction. Ten grams of the plant powder were soaked in 500 mL of methanol, in a shaking water bath, at 37 °C (Labtech, Korea) for 5 days. The extract was then centrifuged at 1500 g for 10 min and the solvent in the recovered supernatant was evaporated under reduced pressure using a rotary evaporator (Heidolph Laborota, Germany). The solid residues were then dissolved in DMSO to prepare stock solutions and stored at -20 °C for further use.

Cell cultures

Six solid human tumor cell lines (summarized in Table 2) were cultured in RPMI-1640 medium (Lonza) supplemented with 10 % fetal bovine serum (Gibco), 10 mM HEPES buffer (pH 7.3), 2 mM L-glutamine, 50 µg/mL gentamicin, 100 U/mL penicillin and 100 µg/mL streptomycin sulfate (all from Lonza). The cultures were maintained at 5 % CO₂ in a humid environment at 37 °C. Viable cell count was determined by trypan blue dye exclusion method.

Cytotoxicity and MTT cell viability assays

Cells in their log phase of growth were used to prepare the cultures in a flat-bottomed 96-well microplate. Based on optimization experiments, the two malignant melanoma cell lines were seeded at a final count of 4 x 10⁴ cells/200 µl/well while the rest of the cell lines were seeded at a count of 2 x 10⁴ cells/200 µl/well. Cultures were then incubated for 24 h before they were left untreated (complete growth media only) as a cell growth control, treated with 6.25, 12.5, 25, 50, 100, 200, 400 µg/mL 400, 200, 100, 50, 25, 12.5 or 6.25 µg/mL of the plant extracts (test samples), or treated with the corresponding final concentration of DMSO only (0.04, 0.08, 0.16, 0.32, 0.65, 1.3, 2.6 %) as a solvent control. For the screening test, cultures were treated with 100 µg/mL of the plant extract or 0.65 % of DMSO as

described above. Each treatment group was prepared in triplicate wells. Cultures were then incubated for another 72 h before measurement of cell viability using MTT (3-(4, 5-dimethylthiazol-2-yl)-2,5-diphenyltetrazolium bromide) assay (sigma). Twenty microliters of 5 mg/mL MTT solution in PBS were added to each well and incubated for 3 h at 37 °C to allow the formation of the purple formazin crystals within the viable cells. The supernatants were discarded and the crystals were then left to dissolve in 200 µL of DMSO for 10 min at 37 °C, giving a purple-colored solution of formazin. Absorbance was measured at 570 nm using a microplate reader (BioteK, USA). Cell viability (Cv, %) was determined as in Eq 1.

$$Cv (\%) = (At/Ac)100 \dots\dots\dots (1)$$

where At and Ac are the absorbance of the test sample and control (blank solvent), respectively.

IC₅₀, defined as the concentration at which 50 % of cell viability was inhibited, was computed.

Statistical analysis

Data are expressed as mean ± standard deviation SD (n = 3). Statistical analysis was with Prism 5 software (GraphPad, USA) by one-way ANOVA. Differences were considered significant *p* < 0.05.

RESULTS

Antiproliferative activity

As shown in Table 3, *C. coronarium* consistently reduced cell viability in all the cell lines, to varying extent, except CACO-II cells. In contrast, both *A. andrachne* and *T. polium* did not exhibit antiproliferative activity against any of the cell lines except for A375.S2 malignant melanoma cell line (~40 and 60 % inhibition, respectively), which is attributed to the variable responsiveness of the different cell lines. *C. coronarium* was therefore considered to have a potential antiproliferative effect compared to the other two plants.

Table 2: Cell lines used in this study

Cell type	Cell line	Description
Epithelial-like	MCF-7	Breast adenocarcinoma
Epithelial	T47D	ductal epithelial breast tumor
Epithelial	CACO-2	Colorectal adenocarcinoma
Epithelial	HRT18	Rectum adenocarcinoma
Epithelial-like	A375.S2	Malignant melanoma
Melanocyte	WM1361A	Malignant melanoma

Table 3: Cell viability of six tumor cell lines after treatment with 100 µg/mL of the methanol extract of the investigated plants for 72 h

Cell line	Plant		
	<i>Arbutus andrachne</i> L.	<i>Chrysanthemum coronarium</i> L.	<i>Teucrium polium</i> L.
MCF-7	97.79 ± 6.45	91.45 ± 2.33	118.5 ± 11.28
T47D	108.8 ± 33.44	22.62 ± 12.23	98.5 ± 2.99
CACO-2	121.2 ± 3.00	94.75 ± 3.12	102.2 ± 1.82
HRT18	90.1 ± 6.3	44.37 ± 3.39	89.78 ± 7.44
A375.S2	40.56 ± 5.99	79.83 ± 2.63	61.1 ± 4.46
WM1361A	115.5 ± 2.96	70.97 ± 3.19	99.64 ± 3.53

Data are presented as mean ± SD (n = 3)

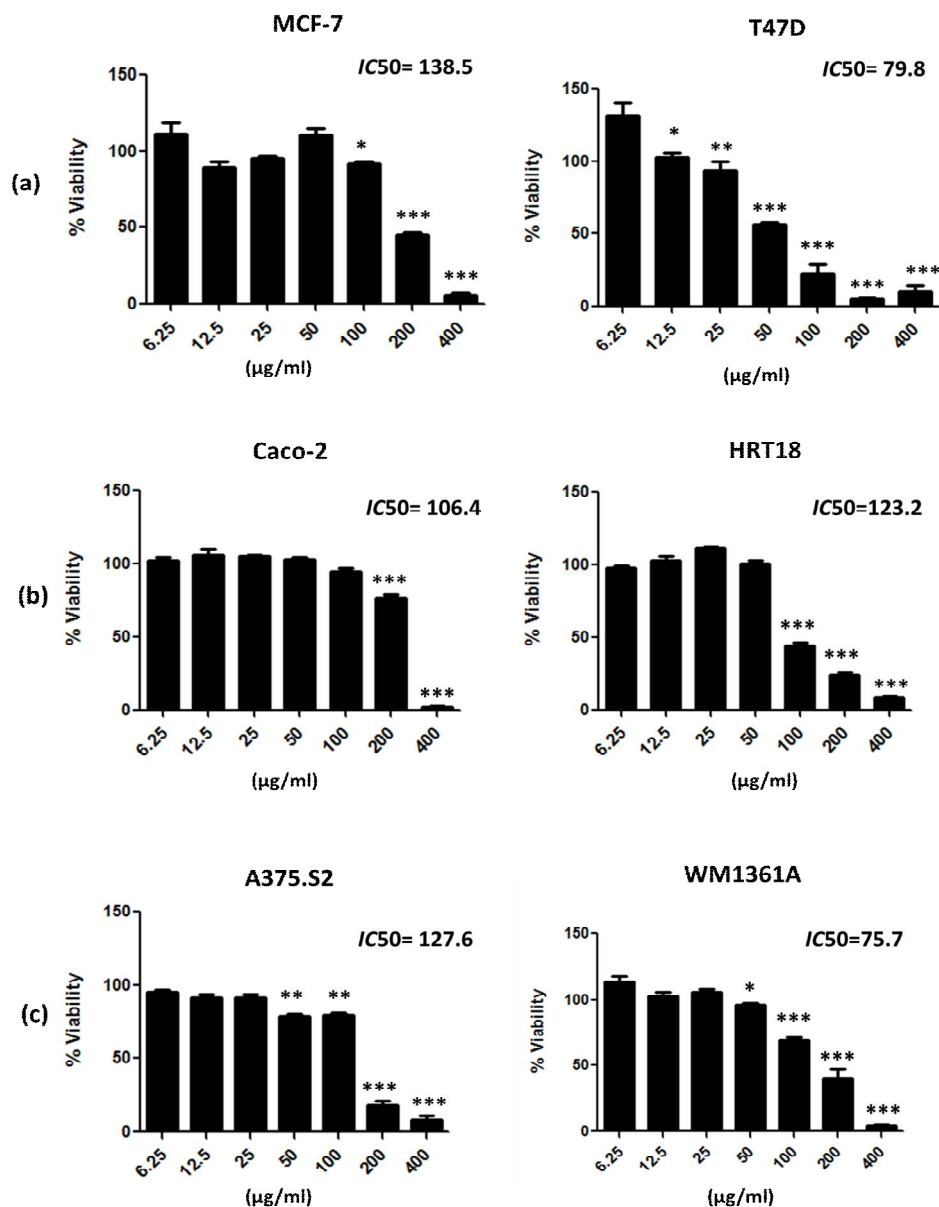


Figure 1: *In vitro* antiproliferative activity of the methanol extract of *C. coronarium* against 6 tumor cell lines. Cells were left untreated, treated with various concentrations of *C. coronarium* extract (6.25, 12.5, 25, 50, 100, 200 or 400 µg/mL), or treated with the corresponding concentration of DMSO as a solvent control. Cultures were left for 72 hours before determination of cell viability using MTT assay. (a) Cell viability of two human breast tumor cell lines. (b) Cell viability of two human rectal tumor cell lines. (c) Cell viability of two human malignant melanoma cell lines. Data are presented as normalized mean values ± SD (n = 3). *, *p* < 0.05; **, *p* < 0.01; ***, *p* < 0.001

DISCUSSION

In Jordan, the search for medicinal plants with antitumor activity is becoming popular. This is in keeping with the increasing demand for a relatively cheaper and safer substitute to the established anticancer agents. To our knowledge, little evidence is known about the antiproliferative effect of *A. andrachne*, *C. coronarium* and *T. polium*, in spite of their use in traditional medicine for cancer treatment. In the present study, there is evidence of the antiproliferative activity of *C. coronarium* extract against three types of human tumor cell lines (breast cancer, colorectal cancer and skin cancer). However, the methanolic extract of *A. andrachne* and *T. polium* did not exhibit significant effects (except for A375.S2 cell line) at the concentration used.

Based on the screening test, *C. coronarium* extract consistently inhibited the proliferation of the six cell lines at 100 µg/mL. Variable degrees of antiproliferative activity was achieved against the different cell lines. The highest activity was demonstrated against malignant melanoma cell line (WM1361A) and ductal epithelial breast tumor cell line (T47D) with IC₅₀ of 75.7 and 79.8 µg/mL, respectively. Whilst MCF-7 breast carcinoma cell line was least sensitive (IC₅₀ = 138.5 µg/mL). In addition to the antiproliferative activity of the plant extract we show here, several previous reports demonstrated multiple pharmacological activities of *C. coronarium* extracts that support its potential anticancer activity. Choi *et al* had demonstrated anti-angiogenic effect of campesterol, a phytosterol isolated from *C. coronarium*, which inhibited fibroblast growth factor-mediated endothelial cell proliferation *in vitro* [11]. In addition, *C. coronarium* extract resulted in the activation of type-1 immunity *in vitro* through induction of IFN-γ production by murine natural killer cells *in vitro* [12]. Considering the volatile oil extract of *C. coronarium*, Marongiu *et al* had demonstrated cytotoxic activity of this extract against Hela and Vero cells [14]. Therefore, *C. coronarium* might be of a promising therapeutic value in the treatment of cancer. This, however, requires further investigation of the anticancer activity of some known chemical constituents of the plant such as quinic acid derivatives and sesquiterpene lactones [18].

In literature, few species of the genus *Chrysanthemum* are reported to have anticancer activity. *C. morifolium*, for example, was reported to exhibit anti-mutagenic activity due to its flavonoids contents [19], while, cytotoxic activity

was observed for *C. segetum* and *C. flosculosus* [14].

With respect to the antiproliferative activity of *T. polium* and *A. andrachne*, the methanolic extracts of both plants exhibited weak antiproliferative effect against the tumor cell lines (at 100 µg/mL). This is in keeping with the results obtained by another study in Jordan, which showed only a relatively weak antiproliferative effect of the ethanolic extracts of either plants [7]. However, considering *T. polium*, other studies in Iran demonstrated an *in vitro* cytotoxic effect of the methanol and the ethanol extracts of this plant against a range of human tumor cell lines (Skmel-3, Saos-2, SW480, MCF-7, KB, EJ and A431, A549, BT20, and PC12) [20]. Besides, the essential oils of *T. polium* ssp. *capitatum* (from Greece) exhibited *in vitro* antiproliferative effect against CACO-2 cell line [34]. This discrepancy might be attributed to the possible chemical polymorphism (chemotypes) among *T. polium* plants growing in different countries, and to the possible variable responses of the different tumor cell lines used in various studies.

CONCLUSION

The data obtained in this study suggest that the methanol extract of *C. coronarium* has potential antiproliferative activity against several human tumor cell lines. This new insight into the anticancer activity of this plant positions it as a source of lead compounds which are promising for the development of new treatments for some cancer types.

ACKNOWLEDGEMENT

The authors wish to thank the Deanship of Academic Research (DAR) at the University of Jordan for financial support for this work.

REFERENCES

1. Ferlay J, Soerjomataram I, Ervik M, Dikshit R, Eser S, Mathers C, Rebelo M, Parkin DM, Forman D, Bray F. GLOBOCAN v1.0, Cancer incidence and mortality worldwide: IARC CancerBase No. 11[Internet]. Lyon, France: International Agency for Research on Cancer; 2013. Available from: <http://globocan.iarc.fr>, accessed on 14/10/2014.
2. McChesney JD, Venkataraman SK, Henri JT. Plant natural products: Back to the future or into extinction? *Phytochemistry* 2007; 68(14): 2015–2022.
3. Orang-Ojong BB, Munyangaju JE, Wei MS, Lin M, Wei G, Foukunang C, Zhu Y. Impact of natural resources and research on cancer treatment and prevention: A

- perspective from Cameroon. *Molecular and clinical oncology* 2013; 1(4): 610-620.
4. Faris M, Takruri H, Shomaf M, Bustanji Y. Chemopreventive effect of raw and cooked lentils (*Lens culinaris* L) and soybeans (*Glycine max*) against Azoxymethane-induced aberrant crypt foci. *Nutrition Research*. 2009; 29:355-362
 5. Bustanji Y, Al-Masri I, Hudaib M, Tawaha K, Mohammad M, Alkhatib H. Pancreatic lipase inhibition activities of Trilactone Terpenes of *Ginkgo biloba*. *Journal of Enzyme Inhibition and Medicinal Chemistry*. 2011, 26:453-459
 6. Jordan Cancer Registry. *Cancer Incidence in Jordan 2009 Report*. Amman (JO): Ministry of Health 2010: 44-47.
 7. Abu-Dahab R, Afifi F. Antiproliferative activity of selected medicinal plants of Jordan against a breast adenocarcinoma cell line (MCF7). *Scientia Pharmaceutica* 2007; 75(4); 121–136.
 8. Bustanji Y, AlDouri N, Issa A, Mashallah S, Assaf A, Aburjai T. Cytotoxic effect of *Mercurialis annua* L. methanolic extract on six human solid cancer cell lines. *Scientific Research and Essays* 2012; 7: 3218-3222.
 9. Assaf AM, Haddadin RN, Aldouri NA, Alabbassi R, Mashallah S, Mohammad M, Bustanji, Y. Anti-cancer, anti-inflammatory and anti-microbial activities of plant extracts used against hematological tumors in traditional medicine of Jordan. *J Ethnopharmacol* 2013; 145(3): 728-736.
 10. Hudaib M, Mohammad M, Bustanji Y, Tayyem R, Yousef M, Abuirjeie M, Aburjai T. Ethnopharmacological survey of medicinal plants in Jordan, Mujib Nature Reserve and surrounding area. *J Ethnopharmacol* 2008; 120(1): 63-71.
 11. Choi JM, Lee EO, Lee HJ, Kim KH, Ahn KS, Shim BS, Kim NI, Song MC, Baek NI, Kim SH. Identification of campesterol from *Chrysanthemum coronarium* L. and its antiangiogenic activities. *Phytother Res* 2007; 21(10): 954–959.
 12. Tanaka S, Koizumi S, Masuko K, Makiuchi N, Aoyagi Y, Quivy E, Mitamura R, Kano T, Ohkuri T, Wakita D, et al. Toll-like receptor-dependent IL-12 production by dendritic cells is required for activation of natural killer cell-mediated Type-1 immunity induced by *Chrysanthemum coronarium* L. *Int Immunopharmacol* 2011 ;11(2): 226-232.
 13. Tawaha K, Alali FQ, Gharaibeh M, Mohammad M, El-Elimat T. Antioxidant activity and total phenolic content of selected Jordanian plant species. *Food Chemistry* 2007; 104(4): 1372–1378.
 14. Marongiu B, Piras A, Porcedda S, Tuveri E, Laconi S, Deidda D, Maxia A. Chemical and biological comparisons on supercritical extracts of *Tanacetum cinerariifolium* (Trevir) Sch. Bip. with three related species of chrysanthemums of Sardinia (Italy). *Nat Prod Res* 2009; 23(2): 190-199.
 15. Hudaib MM, Tawaha KA, Mohammad MK, Assaf AM, Issa AY, Alali FQ, Aburjai TA, Bustanji YK. Xanthine oxidase inhibitory activity of the methanolic extracts of selected Jordanian medicinal plants. *Pharmacognosy Magazine* 2011; 7(28): 320-324.
 16. Abd-Alla HI, Albalawy MA, Aly HF, Shalaby NM, Shaker KH. Flavone composition and antihypercholesterolemic and antihyperglycemic activities of *Chrysanthemum coronarium* L. *Z Naturforsch C, A Journal of Biosciences* 2014; 69(5-6): 199-208.
 17. Bahramikia S, Yazdanparast R. Phytochemistry and medicinal properties of *Teucrium polium* L. (Lamiaceae). *Phytother Res* 2012; 26(11): 1581-1593.
 18. Lee KD, Yang MS, Ha TJ, Park KM, Park KH. Isolation and identification of dihydrochrysanolide and its 1-epimer from *Chrysanthemum coronarium* L. *Biosci Biotechnol Biochem* 2002; 66(4): 862-865.
 19. Miyazawa M, Hisama M. Antimutagenic activity of flavonoids from *Chrysanthemum morifolium*. *Biosci Biotechnol Biochem* 2003; 67(10): 2091-2099.
 20. Menichini F, Conforti F, Rigano D, Formisano C, Piozzi F, Senatore F. Phytochemical composition, anti-inflammatory and antitumour activities of four *Teucrium* essential oils from Greece. *Food Chemistry* 2009; 115(2): 679-686.