

## Patterns of malaria related mortality based on verbal autopsy in Muleba District, north-western Tanzania

G.M. KAATANO<sup>1\*</sup>, F.M. MASHAURI<sup>1</sup>, S.M. KINUNG'HI<sup>1</sup>, J.R. MWANGA<sup>1</sup>, R.C. MALIMA<sup>2</sup>, C. KISHAMAWE<sup>1</sup>, S.E. NNKO<sup>1</sup>, S.M. MAGESA<sup>2</sup> and L.E.G. MBOERA<sup>3</sup>

<sup>1</sup>National Institute for Medical Research, Mwanza Research Centre, P.O. Box 1462, Mwanza, Tanzania

<sup>2</sup>National Institute for Medical Research, Amani Research Centre, P.O. Box 81 Muheza, Tanzania

<sup>3</sup>National Institute for Medical Research, Headquarters, P.O. Box 9653, Dar es Salaam, Tanzania

**Abstract:** Reliable malaria related mortality data is important for planning appropriate interventions. However, there is scarce information on the pattern of malaria related mortality in epidemic prone districts of Tanzania. This study was carried out to determine malaria related mortality and establish its trend change over time in both epidemic and non-epidemic areas of Muleba District of north-western Tanzania. A verbal autopsy survey was conducted to obtain data on all deaths of individuals who died in six randomly selected villages from 1997 to 2006. Relatives of the deceased were interviewed using a standardized questionnaire. Communicable diseases accounted for about two thirds (61.9%) of deaths among  $\geq 5$  years individuals and 84.8% in  $\leq 5$  years. Non-communicable diseases accounted for 28.9% and 14.1% deaths in  $\geq 5$  years and  $\leq 5$  years, respectively. Malaria was the leading cause of deaths in all age groups (40.3%) and among children  $< 5$  years (73.8%). Infants accounted for about two third (64.5%) of all malaria related deaths in children  $< 5$  years. Peak of malaria proportional mortality was highest during malaria epidemics. Most of the malaria-related deaths in this group were among 1-12 months (64.5%) followed by 13-24 months (20.9%), and 25-59 months (14.8%). Cerebral malaria accounted for 18.9% (N=32) of death related to malaria in all age groups; 12.1% (17/141) were in under-five, 42.9% (6/14) were in 5-14 years and 64.3% (9/14) in 15-70 years old. More than half of malaria related deaths (61.0%) in  $< 5$  years children were associated with severe anaemia followed by diarrhoeal disease (24.1%), cerebral malaria (12.5%) and respiratory infection (8.5%) as common conditions. The majority of the deceased caretakers first sought treatment at health facilities within 24hr of the onset of illness. Significantly a higher proportion of caretakers of the underfives in the epidemic area sought treatment within 24hr than in non-epidemic area (39.3% vs. 18.5%;  $P=0.0385$ ). In conclusion, malaria accounts for majority of deaths in Muleba district, with substantial proportion being attributed to malaria epidemics.

**Key words:** malaria, epidemics, mortality, verbal autopsy, Tanzania

### Introduction

Malaria is the most important parasitic disease in Tanzania, causing high morbidity and mortality, particularly among pregnant women and young children. It accounts for more than one-third of deaths of under-five children and to one-fifth of deaths among pregnant women (MoH, 2006). Statistics indicate that over 95% of about 40 million people in Tanzania are at risk for malaria infection. In recent years malaria in Tanzania have extended into previously non-endemic or low transmission areas (Mboera & Kitua, 2001; Maegga *et al.*, 2005). Twenty-five percent of the districts are malaria epidemic prone (Mboera *et al.*, 2007).

A number of challenges have been identified to face malaria control in Tanzania.

They include inadequate human and financial resources, inefficiency healthcare system, and lack of an efficient disease surveillance system (Mboera *et al.*, 2007). Although Tanzania adopted the WHO Integrated Disease Surveillance and Response strategy in 1998, its health management information system (HMIS) is still underdeveloped (Mghamba *et al.*, 2004; Rumisha *et al.*, 2007). Most of epidemiological information is health facility-based data; which is incomplete, untimely and unreliable. Despite these limitations with HMIS, in most cases the health facility-based data underestimates the actual magnitude of mortality due to the fact that many deaths in developing countries, including Tanzania, occur outside health setting (Lopez, 1990). The lack of reliable data on the magnitude and cause(s) of death in developing

\* Correspondence: Dr. Godfrey M. Kaatano; E-mail: gmkaatano@yahoo.com

countries has implication on the capacity for planning, monitoring and evaluation of health interventions.

In recent years, verbal autopsy has been adopted as a partial solution to the health information problem and has become the primary source of information about causes of deaths among populations that lack vital registration and medical certification (Soleman *et al.*, 2006). Despite its low sensitivity and specificity, verbal autopsy, has been used to determine malaria-specific cause of death for community-based studies in many endemic areas (Snow *et al.*, 1992; Salum *et al.*, 1994; Premji *et al.*, 1997; Kamugisha *et al.*, 2007). However, such studies in Tanzania have mostly focused on childhood malaria in area of intense transmission (Salum *et al.*, 1994; Premji *et al.*, 1997) and only few have included malaria low transmission areas (Kamugisha *et al.*, 2007). In areas of unstable and low malaria transmission, all age groups of the population are at increased risk of severe malaria and death (Snow *et al.*, 1997; Marsh & Snow 1999) than in endemic areas.

Malaria epidemics have been increasingly reported in various part of Tanzania due to various factors (Garay, 1998; Mboera & Kitua, 2001; Mboera, 2004). Muleba district is among districts in Tanzania, highly affected by malaria epidemics in recent years. The first most devastating malaria epidemic occurred in 1997/98 following the *EL-Nino* rains. Delayed treatment seeking, antimalarial drug resistance, disruption of the infrastructure and poor health delivery system were the most likely factors that contributed to the high mortality rates observed in Muleba District (Garay, 1998). The district experienced another malaria epidemic in recent years (2006). The government responded to the epidemic by changing the first line antimalarial drug from sulfadoxine-pyrimethamine to artemether-lumefantrine in Muleba district. This was followed by introduction of indoor residual spraying in 2007.

In this study, a verbal autopsy survey was done to assess the magnitude of malaria related mortality, compare pattern of malaria mortality among children and adult between epidemic and non-epidemic areas and establish their trend change over a period 10 years (1997-2006) in Muleba District, north-western Tanzania

## Materials and Methods

### Study area and population

Muleba District (1° 45'N, 31° 40'E) is in north-west of Tanzania and most part of the district

lie at 1200-1500 m. Administratively the district has 5 divisions, 31 wards, and 134 villages. It has a population of 425,172 people (URT, 2002) with 85,035 (20%) being children <5 years. The district has 3 hospitals (Rubya, Kagondo and Ndolage), 4 health centres and 29 dispensaries. Most of its inhabitants are subsistence farmers of coffee and banana. Malaria is the leading cause of death in Muleba district, contributing to 64.2% of deaths in under-five children and 34.6% in  $\geq 5$  years (Kagera Region Report, 2005 *unpubl.*). A recent study has indicated an overall prevalence of malarial infection of 49-53.3% in Muleba district (Mboera *et al.*, 2006).

The study was conducted in six randomly selected villages which were stratified into two groups; villages that experienced the 2006 malaria epidemics (epidemic areas), and villages which were not affected (non-epidemic areas). Villages in the epidemic area were Ijumbi and Nshambya (in Ijumbi ward) located in the relatively high altitude area and Ikondo village (in Ikondo ward) located in the lowland area. Villages in the non-epidemic area were Bushemba (in Buganguzi ward) and Bunywambele (in Ibuga ward) of which all were located in the highlands and Kibanga (in Kibanga ward) which was located in the lowlands. In each village two sub-villages were randomly selected from a list of sub-villages. For each village in the non-epidemic area, one more sub-village was included in the study to facilitate comparability of two arms (epidemic and non-epidemic areas) after it has been observed that non-epidemic villages had relatively lower death rates compared to villages in the epidemic area. Overall, 15 sub-villages were included in the study; 6 from epidemic area and 9 from the non-epidemic area. From each selected sub-village, all households with a history of death within a period of 10 years from 1997 to 2006 were identified, and listed in a checklist. The checklist had the date of census, name of the deceased, sex, age at time of death, date of death and name of the head of household.

### Verbal autopsy procedure

The World Health Organization's standard verbal autopsy (VA) questionnaires (WHO, 2007) with slight modification to suit the local setting, was employed. The questionnaires were translated into Kiswahili and pre-tested before being used in the field survey. The questionnaire assessed the identity of the deceased and established the

sequence of events leading to death including symptoms and signs of the illness.

Two trained physicians with local experience independently reviewed verbal autopsy questionnaire to determine the most likely causes of death. Multiple underlying causes of deaths were identified by the two physicians. None of the physicians were aware of the study. The VA forms were coded only with one principal underlying cause of death and other conditions as immediate cause of death. When there were discordances between the physicians about the cause of death, they met and discussed to reach a consensus.

### Data analysis

Data was entered into SPSS version 11 (SPSS, Chicago, IL, USA) statistical software package for analysis. Age was categorized as 1-59 months, 5-14 years and 15-70 years groups. However, for the under fives, age categories included 1-12 months, 13-24 months and 25 months and above. Malaria proportional mortality and prevalence was determined by generation of frequency tables and cross tabulations. Malaria proportional mortality was applied to establish malaria mortality trend over time and compared pattern by age groups and place of death between epidemic and non-epidemic areas. Pearson's  $X^2$  test was used to compare proportion (prevalence) between two arms (epidemic and non-epidemic areas) and categorical data.

### Ethical considerations

The study received ethical approval from the Medical Research Coordinating Committee of the National Institute for Medical Research. Verbal informed consent was sought from each respondent before the questionnaire was administered.

### Results

A total of 508 deaths were listed during the survey, 285 (56.1%) from epidemic villages and 223 (43.9%) from non-epidemic villages (control). Verbal autopsies were successfully carried out for 419 deaths (82.5%), of which 51.8% were males. Out of the 419 successful VAs, 194 (46.3%) were adults (15-70 years), 45.6% were under-five children and 8.1% were aged 5-14 years. Probable cause of death could not be determined for 23 (5.5%) deaths, and the majority (21) were among  $\geq 5$  years. Of the reported deaths, 243 (58.0%) occurred at health facilities and 169 (42%) occurred outside health facilities. The majority of deaths (72.1%) were attributed to communicable diseases which accounted for 62.0% of deaths among  $\geq 5$  years and 84.8% in under-fives. Malaria was leading cause of death in all age groups accounting for 40.3% (N=169) followed by HIV/AIDS (19.1%), cardiovascular diseases (3.6%), pneumonia (3.3%), protein energy malnutrition (3.3%) and sickle cell disease (2.6%).

**Table 1. Distribution of causes of death by sex among individuals  $\geq 5$  years old in Muleba (N = 228)**

Type of disease condition	Sex		All N (%)
	Female N (%)	Males N (%)	
HIV/AIDS	37 (36.3)	40 (31.8)	77 (33.8)
Malaria	17 (16.7)	13 (13.7)	21 (11.4)
Cardiovascular disease	6 (5.9)	7 (5.6)	13 (5.7)
Pneumonia	5 (4.9)	4 (3.2)	9 (4.0)
Tuberculosis	3 (2.9)	6 (4.8)	9 (4.0)
Sickle Cell Disease	3 (2.9)	5 (4.0)	8 (3.5)
Injuries	1 (1.0)	7 (5.6)	8 (3.5)
Neurological lesion/ diseases	3 (2.9)	4 (3.2)	7 (3.1)
Maternal/reproductive conditions	7 (6.9)	--	7 (3.1)
Acute meningitis	3 (2.9)	2 (1.6)	5 (2.2)
Chronic obstructive lung disease	1 (1.0)	3 (2.4)	4 (1.7)
Diarrhoeal diseases	2 (2.0)	1 (0.8)	3 (1.3)
Renal diseases	2 (2.0)	1 (0.8)	3 (1.3)
Digestive diseases	1 (4.3)	2 (1.6)	3 (1.3)
Neoplasms	2 (2.0)	0 (0.0)	2 (0.9)
Diabetes	1 (1.0)	2 (1.6)	3 (1.3)
Other conditions	5 (4.9)	7 (5.6)	12 (5.3)
Undetermined	7 (7.0)	14 (11.0)	21 (9.2)
Overall total	102	126	228

Malaria accounted for 73.8% and 41.2% of deaths among the <5 years and 5-14 years age groups, respectively. HIV / AIDS was the second leading cause of mortality; accounting for 33.8% of all death in individuals of five years and above (Table 1). Among the sexually active age groups (15-60 years), HIV / AIDS accounted 43.4% of all deaths.

Of the 169 malaria attributable deaths recorded, 18.9% (32) and 137 (81.1%) were classified as cerebral and clinical malaria, respectively. Majority (80.5%) of the 169 reported deaths attributed to malaria occurred at health facilities. A higher proportion of malaria related deaths occurred at health facilities in the

**Table 2: Distribution of causes of death by sex among children <5 years old in Muleba (N = 191)**

Type of disease condition	Sex		All N (%)
	Female N (%)	Male N (%)	
Malaria	72(72.0%)	69(75.8%)	141(73.8%)
Protein energy malnutrition	7(7.0%)	6(6.6%)	13(6.8%)
Diarrhoeal diseases	3(3.0%)	2(2.2%)	5(2.6%)
Pneumonia	3(3.0%)	2(2.2%)	5(2.6%)
Pyogenic meningitis	1(1.0%)	3(3.3%)	4(2.1%)
HIV / AIDS	3(3.0%)	0	3(1.6%)
Chronic pulmonary infection	1(1.5%)	0	1(0.8%)
Nephrotic syndrome	2(2.0%)	1(1.1%)	3(1.6%)
Sickle cell disease	2(2.0%)	1(1.1%)	3(1.6%)
Neurological lesion/ disease	2(2.0%)	1(1.1%)	3(1.6%)
Injuries	1(1.0%)	2(2.2%)	3(1.6%)
Other infection	2(2.0%)	3(3.3%)	5(2.6%)
Undetermined	1 (1.0)	1 (1.1)	2 (1.1)
Overall total	100	91	191

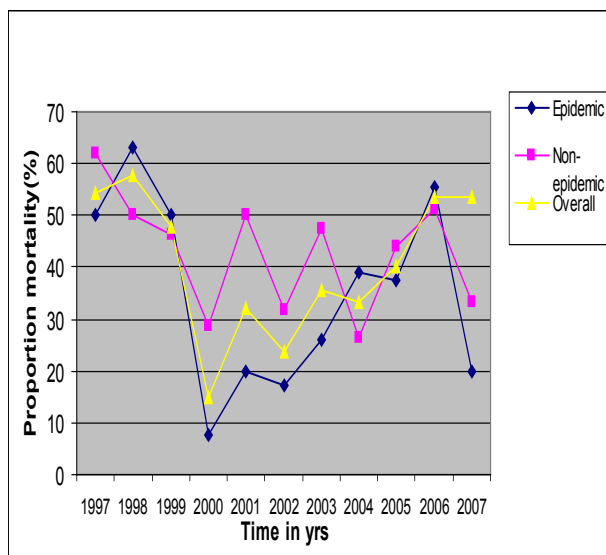
Malaria was associated with the majority of deaths among the < 5 years olds (Table 2). This was followed by protein energy malnutrition (marasmickwashiorakor=10andkwashiorkor=3), diarrhoeal diseases and pneumonia. Other conditions included measles (1), septicaemia (1), post-operative sepsis (1), and cardiovascular condition (2) (Table 2).

epidemic areas (85.9%) than in non-epidemic areas (75.0%,  $P=0.0738$ ). Significantly, a larger proportion of malaria related deaths occurred outside health facilities in non-epidemic (12.4%) than epidemic areas (7.1%;  $P=0.0336$ ). There was no significant difference in malaria related death by age group and clinical type of malaria between epidemic and non-epidemic areas (Tables 3).

**Table 3: Malaria related death by age group, clinical type and place of death among (N=169) in Muleba District**

Variable	Category	Total	Malaria endemicity		P-value
			Epidemic N (%)	Non-epidemic N (%)	
Age group	1 – 59 months	141(83.4%)	69 (81.2%)	72(85.7%)	0.4314
	5 - 14 yrs	14 (8.3%)	7 (8.2%)	7(8.3%)	0.9812
	15 – 70 yrs	14 (8.3%)	9 (10.6%)	5(6.0%)	0.2788
Clinical type	Cerebral malaria	32(18.9)	14 (16.5%)	18(21.4%)	0.4163
	Clinical malaria	137(81.1)	71(83.5%)	66(78.6%)	0.4163
Place of death	Health facility	136 (80.5%)	73 (85.9%)	63(75.0%)	0.0738
	Outside health facility	33 (19.5%)	12 (7.1%)	21 (12.4%)	0.0336

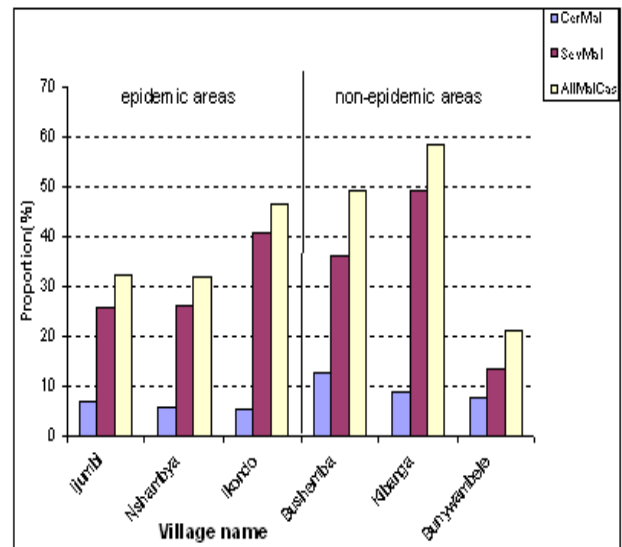
Overall malaria proportional mortality over 1997-2007 time interval was 40.3%. Villages in the non-epidemic area had a slightly higher (45.2%) malaria proportional mortality than villages in epidemic area (36.5%;  $P=0.0713$ ). However, villages in the lowlands areas had higher (52.7%) significant malaria proportional mortality than villages in highlands (33.5 %;  $P=0.0001$ ). About 58% of malaria occurred during two episodes of malaria outbreak (1997/1998 and 2005/2006) with overall malaria proportional mortality of 51.9% during that period. Peak of malaria proportional mortality was highest during malaria epidemic, 1997/1998 and 2005/2006 (Figure1). Malaria proportional mortality in villages in the epidemic was much lower than in non-epidemic areas during the non-epidemic years.



**Figure1. Trend of malaria proportional mortality 1997- 2007**

Children of <5 years accounted for most of death (83.4%) attributed to malaria. Most of the malaria-related deaths in this group were among 1-12 months (64.5%) followed by 13-24 months (20.6%), and 25-59months (14.9%). Cerebral malaria accounted for 18.9% (32/169) of death related to malaria in all age groups; 12.1% (17/141) were in underfive, 42.9% (6/14) in 5-14 years old and 64.3 (9/14) in 15-70 years old. Similarly there was no difference

in proportion of cerebral malaria related death as clinical type between epidemic and non-epidemic areas (16.5% vs. 21.4%,  $P=0.4163$ ) (Table 3). The highest proportion of death attributed to malaria were in Kibanga village (58.3%), followed by Bushemba (49.1%), Ikondo (46.4%), Ijumbi (32.5%) and Nshambya (31.8%). Most cerebral malaria associated deaths were reported in Bushemba (12.7%) (Figure2).



**Figure1: Proportional cause of death attributed to malaria by village name**

**Key:** CerMal = Cerebral malaria; SevMal = Severe malaria; AllMalCas = All malaria

More than half of malaria related deaths (61.0%) in <5 years children were associated with severe anaemia followed by diarrhoeal disease (24.1%), cerebral malaria (12.5%) and respiratory infections (8.5%) as common conditions. Some 19.9% of the caretakers reported their child to have an episode of febrile convulsion before death (Table 4). The deceased caretakers first sought treatment from health facilities for first time within 24hr of the onset of illness for 38 (26.5%) deaths, 1-3 days for 70 (50%) deaths and 4-7 days for 29 (18.9%) deaths. The respective proportion of illness duration (between onset of illness and death) were 5.7%; 29.8% and 27.7%. However, a significantly higher proportion of caretakers of deceased under fives in the epidemic area sought treatment within 24hr than in non-epidemic area (39.3% vs. 18.5%;  $P = 0.0385$ ).

**Table 4: Malaria associated conditions, illness duration, treatment seeking and perceived cause of death among under fives (N=141)**

Variable	Category	Number (%) of deaths			P-value
		Total	Epidemic	Non-epidemic	
<i>Malaria associated condition</i>	Anaemia	86 (61.0)	40 (58.0)	46 (63.9)	0.4727
	Diarrhoea	34 (24.1)	14 (20.3)	20 (27.8)	0.2981
	Convulsions	28 (19.9)	14 (20.3)	14 (19.4)	0.8934
	LRI	12 (8.5)	6 (8.7)	6 (8.3)	0.9321
<i>Illness duration before death</i>	≤ 1 day	8 (5.7)	5 (7.3)	3 (4.2)	0.4280
	1 - 3 days	42 (29.8)	20 (29.0)	22 (30.6)	0.8355
	4 - 7 days	39 (27.7)	21 (30.4)	18 (25.0)	0.4736
	> 7 days	52 (36.9)	23 (33.3)	29 (40.3)	0.3891
<i>*Time of seeking care</i>	< 1 day	35 (26.5)	23 (34.3)	12 (18.5)	0.0388
	1- 3 days	66 (50.0)	31 (46.3)	35 (53.9)	0.3826
	4 - 7	25 (18.9)	12 (17.9)	13 (20.0)	0.7582
	> 7days	6 (4.6)	1 (1.5)	5 (7.7)	0.0876
<i>Perceived cause of death</i>	Malaria illness	31 (93.6)	63 (92.7)	68 (94.4)	0.6818
	Other diseases	5 (3.6)	3 (4.5)	2 (2.9)	0.6151
	Unknown	4 (2.8)	2 (2.9)	2 (2.9)	1.000

**Key:** \*N=131; LRI= lower respiratory infection

## Discussion

Like elsewhere in Tanzania communicable diseases accounted for about two third of the causes of mortality in Muleba district (MoH, 2006; Kamugisha *et al.*, 2007). One major finding in the current study is the confirmation of malaria as the major cause of death in Muleba district. Malaria proportional mortality in the study district was even much higher than have been reported in high transmission areas in Tanzania (Premji *et al.*, 1997; Salum *et al.* 1994). The high malaria-associated mortality is substantiated by healthcare facility-based data that indicate that 64.2% of deaths in <5 years is due to malaria (Kagera Region Report, 2005, *unpubl*). Recent studies have indicated that malaria prevalence in Muleba ranges from 49% and 53.5% (Mboera *et al.*, 2006) indicating a change in endemicity in the area. More recent surveys have indicated that the overall prevalence of malaria in young children in Tanzania is 18%, with Kagera Region having the highest rate (42%) (THMIS, 2008). The occurrence of such high proportion death within 2 years of age among children is consistent with the fact that most children experience their first malaria infections during the first year or two of life, when they have not yet acquired adequate clinical immunity.

In our study, HIV/AIDS accounted for 43.3% of deaths in sexually active age group.

Similar findings have been reported in Uganda (Nunn *et al.*, 2000). High prevalence of HIV/AIDS in Kagera Region (including Muleba district) is likely to have influenced high mortalities observed in this study. The 6.8% deaths attributed to malnutrition observed in our study is also likely to be associated with HIV/AIDS. Such high rate of HIV/AIDS and related opportunistic infections/conditions might have worsened and affected the pattern of malaria related mortality observed (Korenromp *et al.*, 2005). In Kwa Zulu Natal, South Africa, an area of unstable malaria transmission, it has been observed that 8.8% and 2.7% fold increase in mortality among adults (Grimwade *et al.*, 2004) and child (Grimwade *et al.*, 2003) had severe malaria, respectively, associated with HIV-1 infection. The lack of difference in malaria related mortality pattern between the epidemic and non-epidemic villages is likely to be due to misclassification by criteria used based on the history of malaria epidemic. Village bordering the malaria epidemic prone area are likely to have equally being affected by the 2006 malaria epidemic.

Our findings indicate that anaemia, diarrhoea and cerebral malaria are common conditions associated with malaria among children in epidemic prone areas. Anaemia and cerebral malaria are the two major forms of severe disease leading to death. The risk

of developing severe malaria is much higher in low and moderate transmission than high transmission area (Snow *et al.*, 1997). Malarial anaemia may either develop rapidly following an acute malaria attack or may develop insidiously over a period of time (Abdalla *et al.*, 1980). In epidemic prone area during malaria epidemic, an acute infectious anaemia is a phenomenon likely to be encountered. This is supported by the short illness duration revealed in our study. About one third of the deaths occurred within three days of the onset of illness. The substantial proportion of deaths attributed to cerebral malaria revealed in this study is another explanation for that short illness duration observed. In areas of lower transmission cerebral malaria predominates as a common complication and occurs at relatively older children whereas in high transmission severe anaemia usually occur in young children (Marsh & Snow, 1999). This is consistent with acquisition of functional immunity. The association of diarrhoeal diseases with malaria illness among children has been reported elsewhere (Reither *et al.*, 2007).

Late treatment seeking and deaths at home are common in Muleba like elsewhere in Tanzania. About three quarters of under-five caretakers' sought treatment at health facilities after 24 hours, suggesting that such high rate of malaria related mortality was likely to be attributed to the delay in seeking treatment. Most likely possible reason for such delays in seeking treatment is poor knowledge of malaria disease among under-five care takers as shown in a recent study in Muheza Tanzania (Ringsted *et al.*, 2006), in Lake Victoria areas (Kaatano *et al.*, 2006) and Mvomero (Mboera *et al.*, 2009). Anaemia was poorly recognized and febrile convulsions were not associated with malaria among under-fives' caretakers. Seeking treatment outside the formal channel either from traditional healers (Kaatano *et al.*, 2006) or self-medication with local herbs or modern medicine from drug sellers might result into delay in appropriate management of malaria. Other possible reasons are poverty and long distance to the health facilities. Therefore our findings suggest a need of promoting health seeking behaviour among communities in order to reduce mortality associated with malaria and other diseases among the children.

Our study had several limitations which include the cross-sectional study design rather than cohort and likelihood of having recall

bias due to long duration of memory recall. The effect of memory recall might not be very significant due to the fact that sensitive life events like deaths are unlikely to be forgotten. Despite that limitation, our study has clearly shown an impact of malaria on mortality in Muleba district, with substantial proportion being attributed to malaria epidemics.

### Acknowledgements

We are grateful to John Chungalucha, Director, Mwanza Medical Research Centre for his logistic support. We thank the Muleba District Medical Officer and all village leaders and members of communities of the selected villages for their field assistance and cooperation. We are grateful to families of the bereaved for their willingness to provide information during the verbal autopsy interviews. Special thanks are to Ms Halaika Rwehumbiza and Mr Albert Bongo for their assistance in conducting verbal autopsy interview. This study received financial support from National Institute for Medical Research.

Received 15 August 2009

Revised 28 August 2009

Accepted 13 September 2009

### References

- Abdalla, S., Weatherall, D.J., Wickramasinghe, S.N. & Hughes, M. (1980) The anaemia of *P. falciparum* malaria. *British Journal of Haematology* 46, 171-183.
- Garay, J. (1998) *Epidemiological survey and situation analysis: Malaria epidemic in Nshamba Division, Muleba District, Tanzania*. MSF Spain 47 pp.
- Grimwade, K., French, N., Mbatha, D.D., Zungu, D.D., Dedicoat, M. & Gilks, C.F. (2003) Childhood malaria in a region of unstable transmission and high human immunodeficiency virus prevalence. *Pediatrics Infectious Disease Journal* 22, 1057-1063.
- Grimwade, K., French, N., Mbatha, D.D., Zungu, D.D., Dedicoat, M. & Gilks, C.F. (2004) HIV infection as a cofactor for severe falciparum malaria in adults living in a region of unstable malaria transmission in South Africa. *AIDS* 18, 547-554.
- Lopez, A.D (1990) Causes of death: an assessment of global patterns of mortality around 1985. *World Health Statistics Quarterly* 43, 91-104.

- Kaatano, G.M., Muro, A.I.S. & Medard, M. (2006) Caretakers' perceptions, attitudes and practices regarding childhood febrile illness and diarrhoeal diseases in riparian communities of Lake Victoria, in Tanzania. *Tanzania Health Research Bulletin* 8, 155-161.
- Kamugisha, M.L., Gesase, S., Mlwilo, T.D., Mmbando, B.P., Segeja, M.D., Minja, D.T., Massaga, J.J., Msangeni, H.A., Ishengoma, D.R. & Lemnge, M.M. (2007) Malaria specific mortality in lowlands and highlands of Muheza district, north-eastern, Tanzania. *Tanzania Health Research Bulletin* 9, 32-37.
- Korenromp, E.P., Williams, B.G., de Vlas, S.J., Gouws, E., Gilks, C.F., Ghys, P.D. & Nahlen, B.L (2005) Malaria attributable to the HIV-1 epidemic, sub-Saharan Africa. *Emerging Infectious Disease* 11, 1410-1419.
- Maegga, B.T.A., Cox, J. & Malley, K.D. (2005) Malaria in the southern highlands of Tanzania: a review of hospital records. *Tanzania Health Research Bulletin* 7, 125-132.
- Marsh, K. & Snow, R.W. (1999) Malaria transmission and morbidity. *Parasitologia* 41, 241-246.
- Mboera, L.E.G. (2004) Environmental and socio-economic determinants of malaria epidemics in highlands of Tanzania. *Tanzania Health Research Bulletin* 6, 11-17.
- Mboera, L.E.G., Fanello, C.I., Malima, R.C., Talbert, A., Fogliati, P., Bobbio, F. & Molteni, F. (2006) Comparison of the Paracheck-Pf test to microscopy for confirmation of *Plasmodium falciparum* malaria in Tanzania. *Annals of Tropical Medicine & Parasitology* 100, 115-122.
- Mboera, L.E.G. & Kitua, A.Y. (2001) Malaria epidemics in Tanzania: an overview. *African Journal of Health Sciences* 8, 17-23.
- Mboera, L.E.G., Makundi, E.A. & Kitua, A.Y. (2007) Uncertainty in malaria control in Tanzania: crossroads and challenges for future interventions. *American Journal of Tropical Medicine and Hygiene* 77 (Suppl 6), 112-118.
- Mboera, L.E.G., Shayo, E.H., Senkoro, K.P., Rumisha, S.F., Mlozi, M.R.S., Mayala, B.K. (2009) Knowledge, perceptions and practices of farming communities on linkages between malaria and agriculture in Mvomero District, Tanzania. *Acta Tropica* 112, 000-00 (in press)
- Mghamba, J.M., Mboera, L.E.G., Krekamoo, W., Senkoro, K.P., Rumisha, S.F., Shayo, E.H. & Mmbuji, P. (2004) Challenges of implementing Integrated Disease Surveillance and Response strategy using the current Health Management Information System in Tanzania. *Tanzania Health Research Bulletin* 6, 57-63.
- MoH (2006) *Annual Health Statistics Abstract 2006*. Ministry of Health and Social Welfare, Dar-es-Salaam, United Republic of Tanzania
- Nunn, A.J., Mulder, D.W., Kamali, A., Ruberantwari, A., Kengeya-Kayondo, J.F. & Whitworth, J. (1997) Mortality associated with HIV-1 infection over five years in a rural Ugandan population: cohort study. *BMJ* 315 (7111), 767-771
- Premji, Z., Ndayanga, P., Shiff, C., Minjas, J., Lubega, P. & MacLeod, J. (1997) Community based studies on childhood mortality in a malaria holoendemic area on the Tanzanian coast. *Acta Tropica* 63, 101-109.
- Reither, K., Ignatius, R., Weitzel, T., Seidu-Korkor, A., Anyidoho, L., Saad, E., Djie-Maletz, A., Ziniel, P., Amoo-Sakyi, F., Danikuu, F., Danour, S., Otchwemah, N.R., Schreier, E., Bienzle, U., Stark, K. & Mockenhaupt, F.P. (2007) Acute childhood diarrhoea in northern Ghana: epidemiological, clinical and microbiological characteristics *BMC Infectious Disease* 7, 104.
- Ringsted, F.M., Bygbjerg, I.C. & Samuelsen, H. (2006) Early home-based recognition of anaemia via general danger signs, in young children, in a malaria endemic community in north-east Tanzania. *Malaria Journal* 5, 111.
- Rumisha, S.F., Mboera, L.E.G., Senkoro, S.F., Gueye, D. & Mmbuji, P.L. (2007) Monitoring and evaluation of Integrated Disease Surveillance and Response in selected Districts in Tanzania. *Tanzania Health Research Bulletin* 9, 1-11.
- Salum, F.M., Wilkes, T.J., Kivumbi, K. & Curtis, C.F. (1994) Mortality of underfives in a rural area of holoendemic malaria transmission. *Acta Tropica* 58, 29-34.
- Snow, R.W., Armstrong, J.R.M., Forster, D., Winstanley, M.T., Marsh, V.M., Newton, C.R.J.C., Waruiru, C., Mwangi, I., Winstanley, P.A. & Marsh, K. (1992) Childhood deaths in Africa: uses and



- limitations of verbal autopsies. *Lancet* 340, 351-335.
- Snow, R.W., Omumbo, J.A., Lowe, B., Molyneux, C.S., Obiero, J.O., Palmer, A., Weber, M.W., Pinder, M., Nahlen, B., Obonyo, C., Newbold, C., Gupta, S. & Marsh, K. (1997) Relation between severe malaria morbidity in children and level of *Plasmodium falciparum* transmission in Africa. *Lancet* 349(9066), 1650-1654.
- Snow, R.W., Craig, M., Deichmann, U. & Marsh, K. (1999) Estimating mortality, morbidity and disability due to malaria among Africa's non-pregnant population. *Bulletin of the World Health Organization* 77, 624-640.
- Soleman, N., Chandramohan, D. & Shibuya, K. (2006) Verbal autopsy: current practices and challenges. *Bulletin of the World Health Organization* 84, 239-245.
- THMIS (2008) *Tanzania HIV and Malaria Indicator Survey 2007-08*. Preliminary Report. Tanzania Commission for AIDS.
- URT (2002) *Population and Housing Census General Report*. Central Census Office National Bureau of Statistics, President's Office, Planning and Privatization Government Printers United Republic of Tanzania 2003:203 pp.
- WHO (2007) *Verbal Autopsy Standards: Ascertaining and Attributing Cause of Death*. World Health Organization, Geneva.