

Abdominal and neuroimaging quiz case



Author:
Shalendra Misser¹

Affiliation:
¹Lake Smit and Partners Inc,
Durban, South Africa

Corresponding author:
Shalendra Misser,
shalendra.misser@lakesmit.
co.za

Dates:
Received: 06 May 2016
Accepted: 12 May 2016
Published: 22 June 2016

How to cite this article:
Misser S. Abdominal and
neuroimaging quiz case. S Afr
J Rad. 2016;20(1), a957.
[http://dx.doi.org/10.4102/
sajr.v20i1.1029](http://dx.doi.org/10.4102/sajr.v20i1.1029)

Copyright:
© 2016. The Authors.
Licensee: AOSIS. This work
is licensed under the
Creative Commons
Attribution License.

A 40-year-old lady had a CT and an MRI scan of her brain for investigation of severe headache following recent recurrent bowel surgery. The post-operative course was complicated by abdominal wall haematoma, and she required multiple blood transfusions. The background history of multiple previous bowel resections and chronic anti-inflammatory therapy for inflammatory bowel disease was noted.

Describe the relevant imaging findings and formulate the most appropriate clinical diagnosis.

Please submit your response to shalendra.misser@lakesmit.co.za not later than 31 July 2016.

The winning respondent will receive R2000 as a reward from the RSSA.

A detailed diagnosis and discussion will be presented in the next issue of the SAJR.

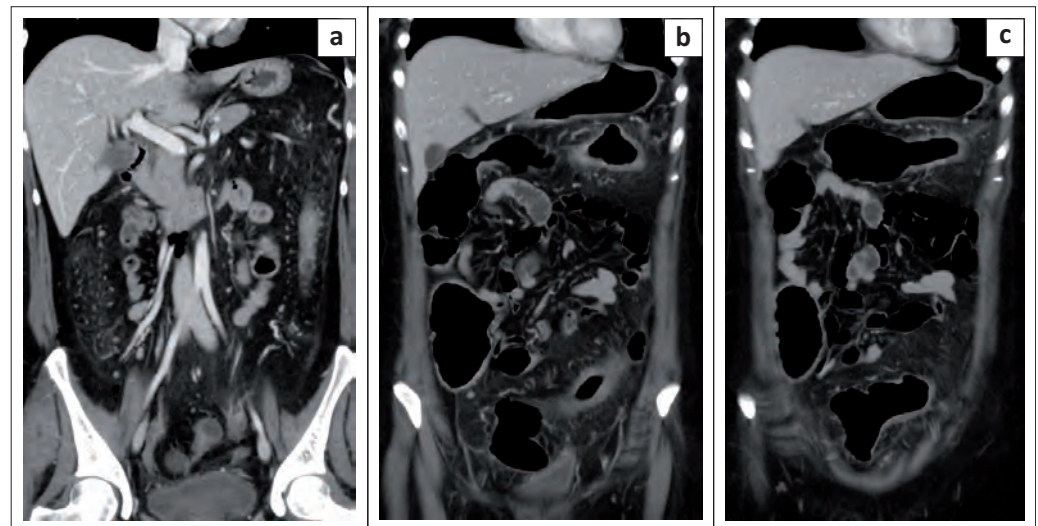


FIGURE 1: Coronal reformat images (a, b and c) of the abdomen in venous phase after intravenous contrast administration.

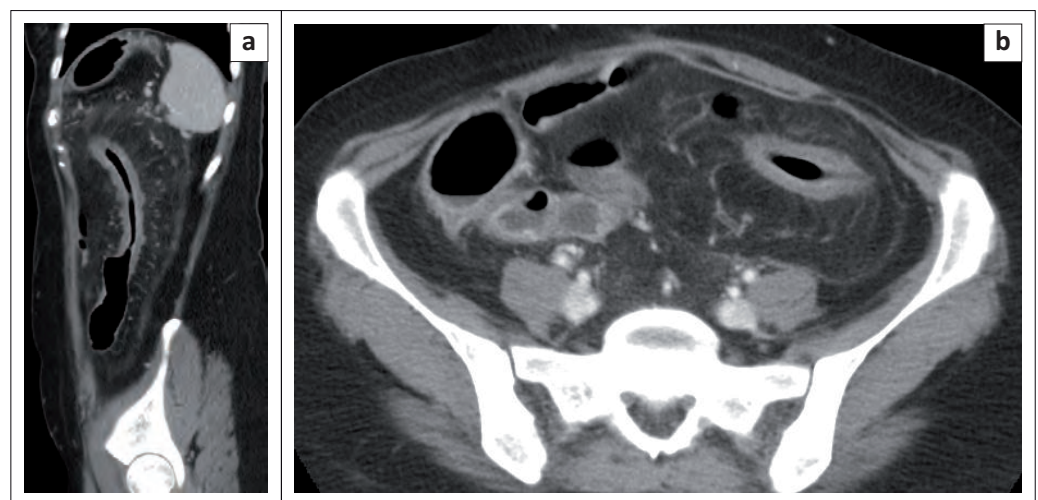


FIGURE 2: Sagittal (a) and (b) axial images of the abdomen in venous phase after intravenous contrast administration.

Read online:



Scan this QR
code with your
smart phone or
mobile device
to read online.

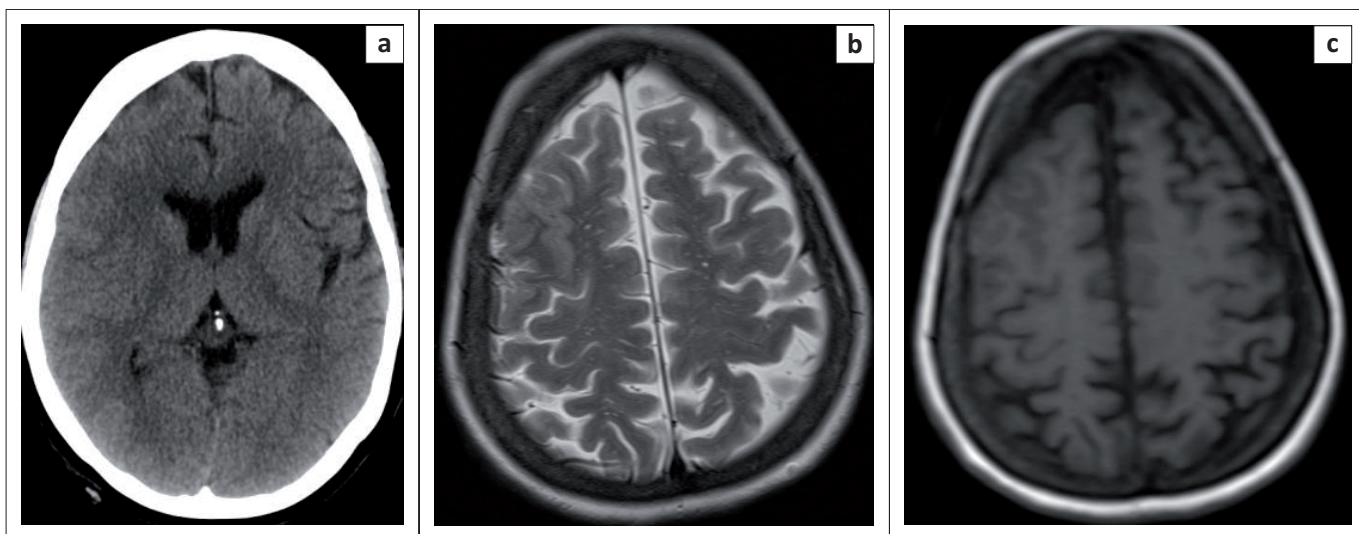


FIGURE 3: Axial non-contrasted (a) CT image, (b) T2 and (c) axial T1-weighted MRI images.

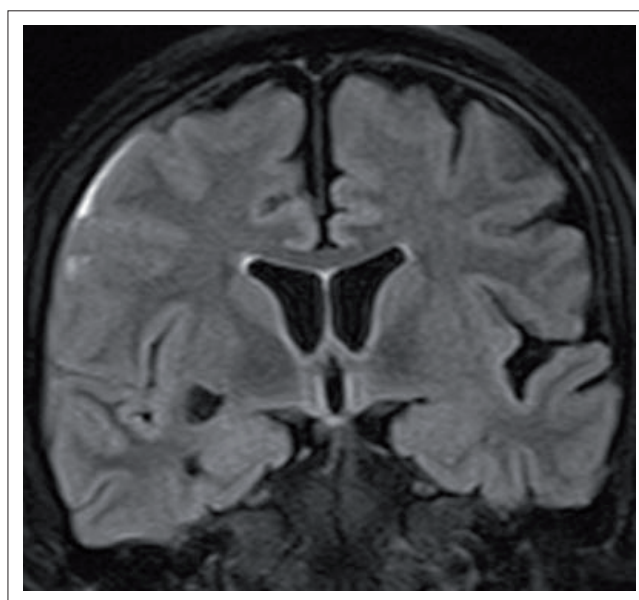


FIGURE 4: Coronal flair MRI image.

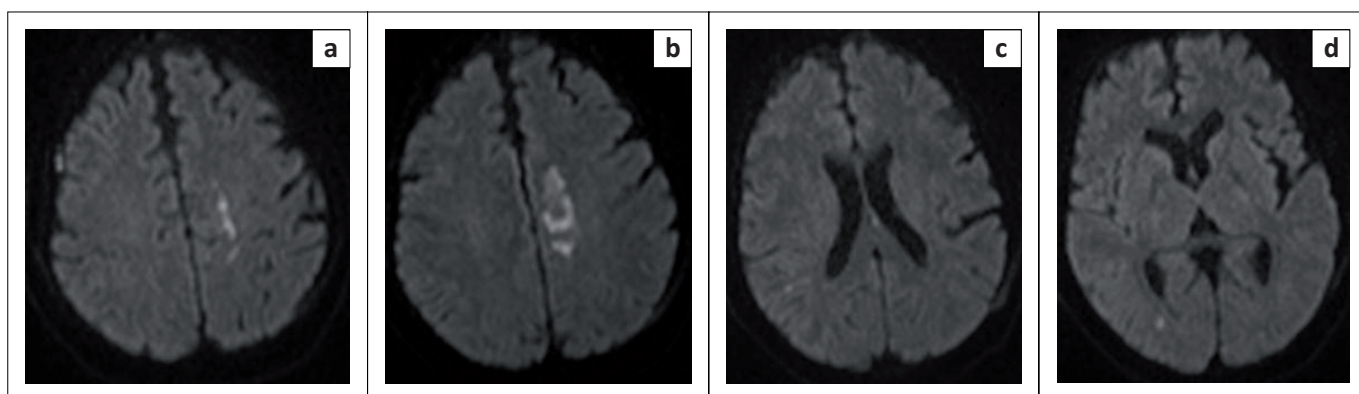


FIGURE 5: Axial diffusion-weighted b1000 MR images (a, b, c and d).

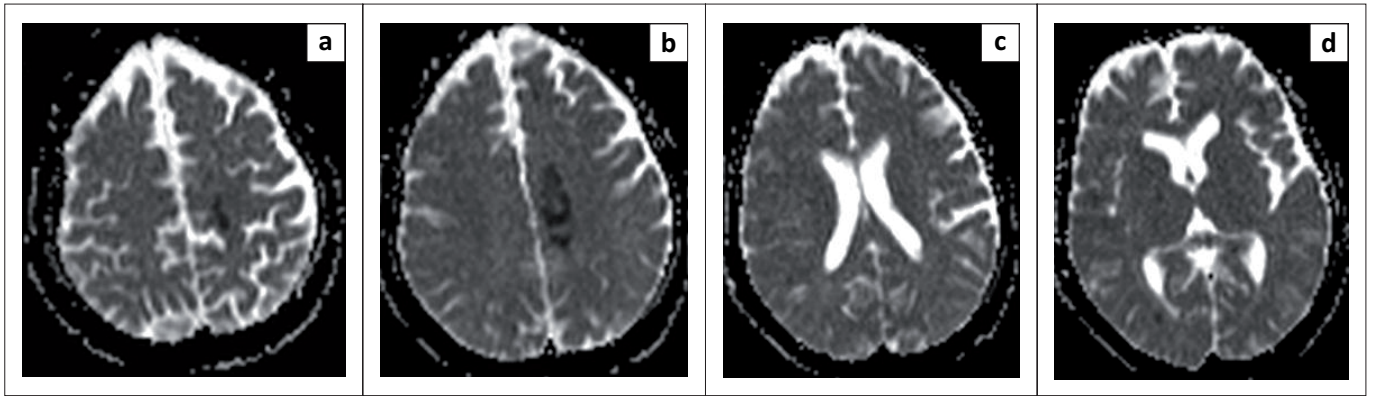


FIGURE 6: Corresponding axial ADC-mapped MR images (a, b, c and d).

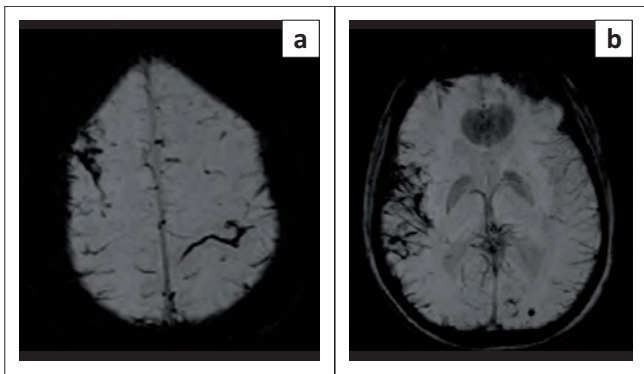


FIGURE 7: Axial SWI MR images (a and b).

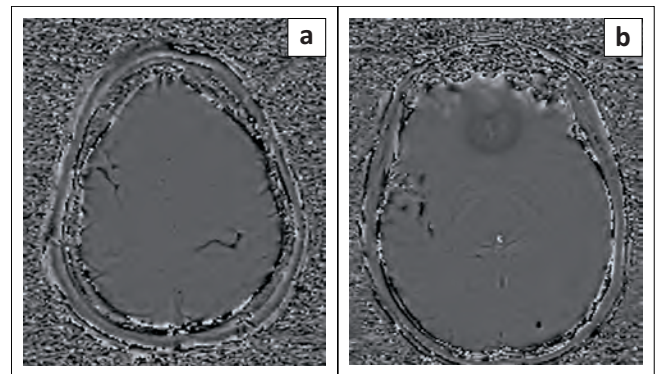


FIGURE 8: Corresponding axial PHASE MR images (a and b).