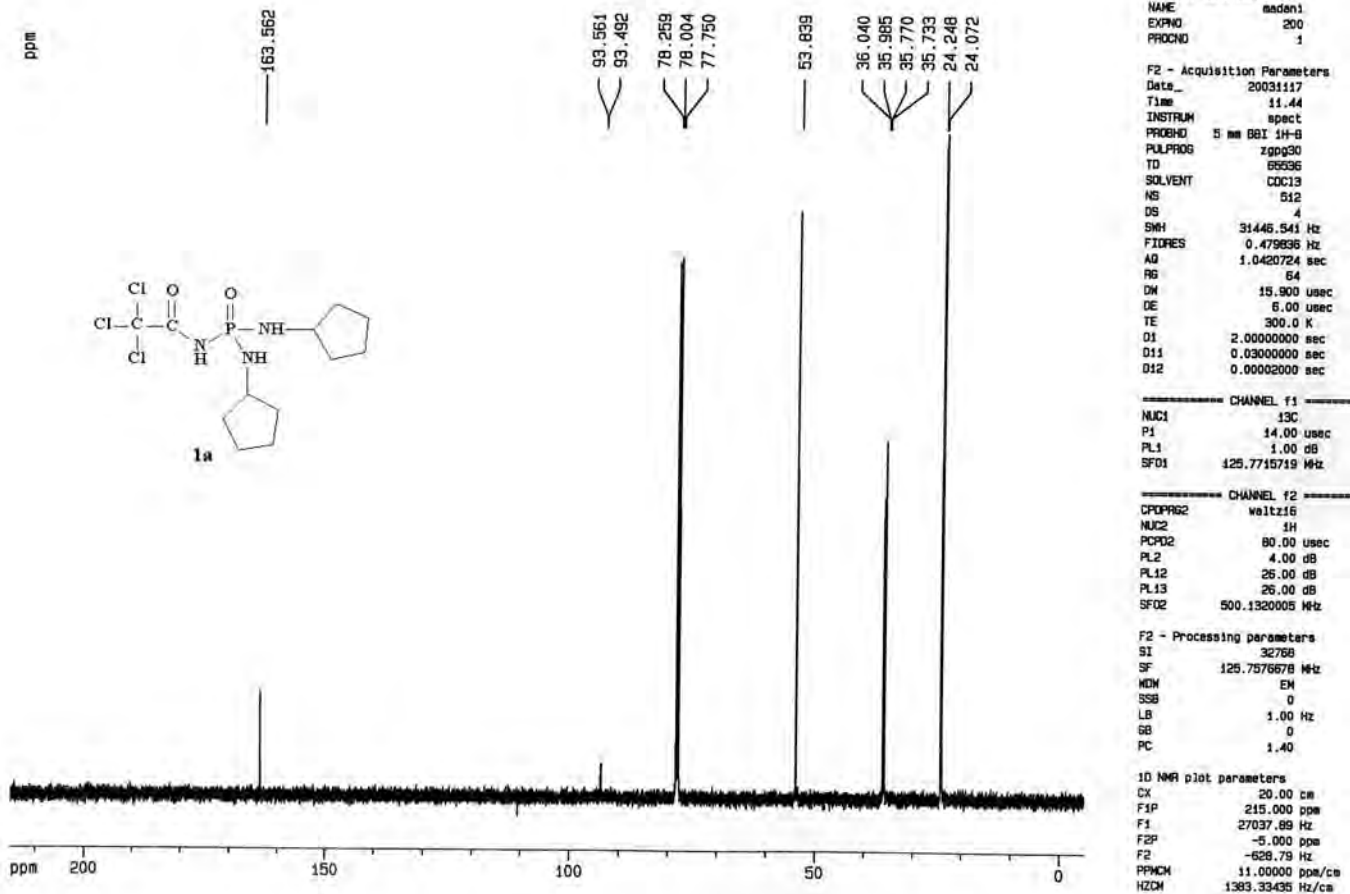
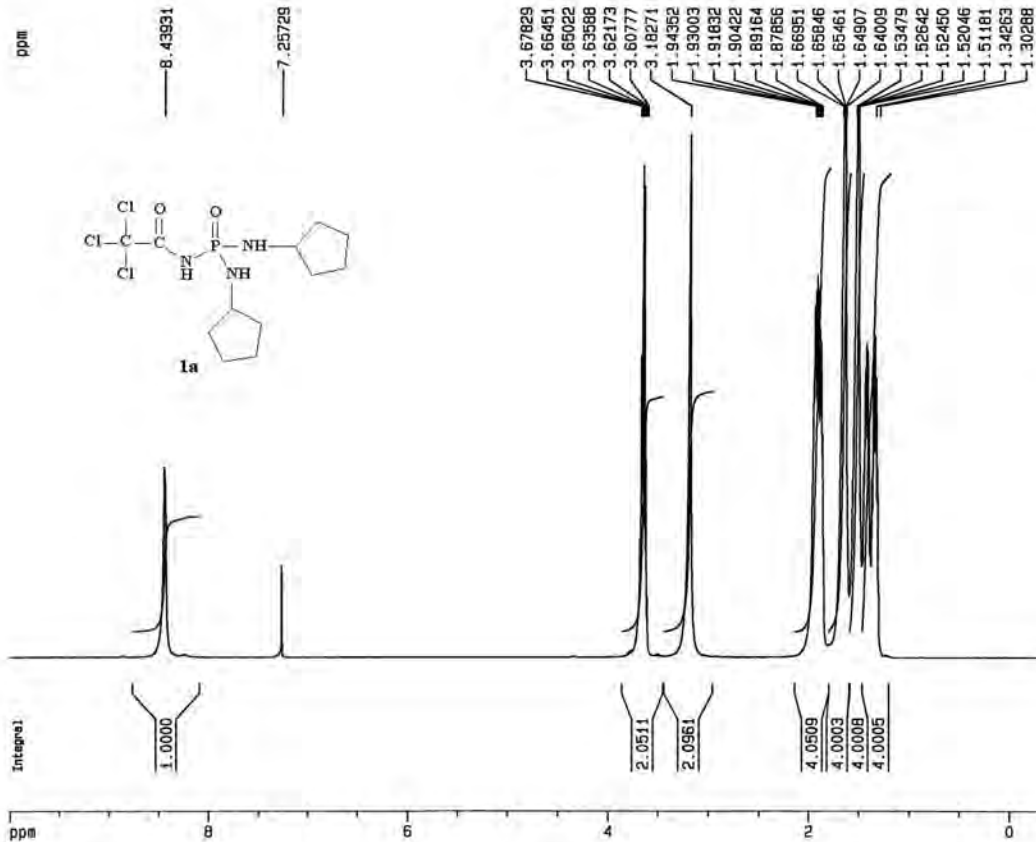


Supplementary material to:

K. Gholivand, A.M. Alizadehgan, F. Mojahed and A.A. Firooz, *S. Afr. J. Chem.*, 2007, **60**, 91–101.





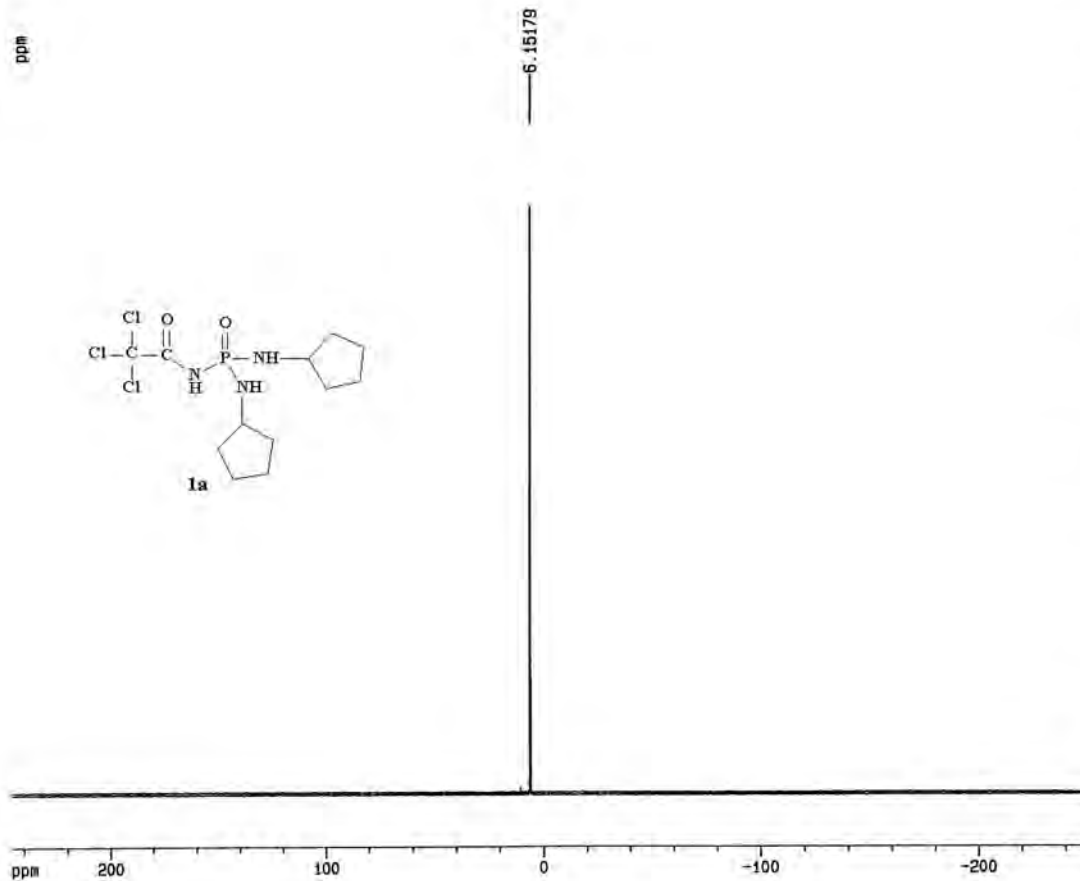
Current Data Parameters
 NAME nadani
 EXPNO 197
 PROCNO 1

F2 - Acquisition Parameters
 Date_ 20031117
 Time 11.15
 INSTRUM spect
 PROBHD 5 mm BBI 1H-8
 PULPROG zg
 TD 32768
 SOLVENT CDCl3
 NS 8
 DS 2
 SWH 10330.578 Hz
 FIDRES 0.315264 Hz
 AQ 1.5860212 sec
 RG 20.2
 DW 48.400 usec
 DE 6.00 usec
 TE 299.0 K
 D1 6.00000000 sec

----- CHANNEL f1 -----
 NUC1 1H
 P1 8.02 usec
 PL1 3.00 dB
 SF01 500.1330885 MHz

F2 - Processing parameters
 SI 32768
 SF 500.1300147 MHz
 MDW EM
 SSB 0
 LB 0.50 Hz
 GB 0
 PC 1.00

1D NMR plot parameters
 CX 20.00 cm
 F1P 10.000 ppm
 F1 5001.30 Hz
 F2P -0.300 ppm
 F2 -150.04 Hz
 PPMCM 0.51500 ppm/cm
 HZCM 257.56696 Hz/cm



Current Data Parameters
 NAME sadan1
 EXPNO 196
 PROCNO 1

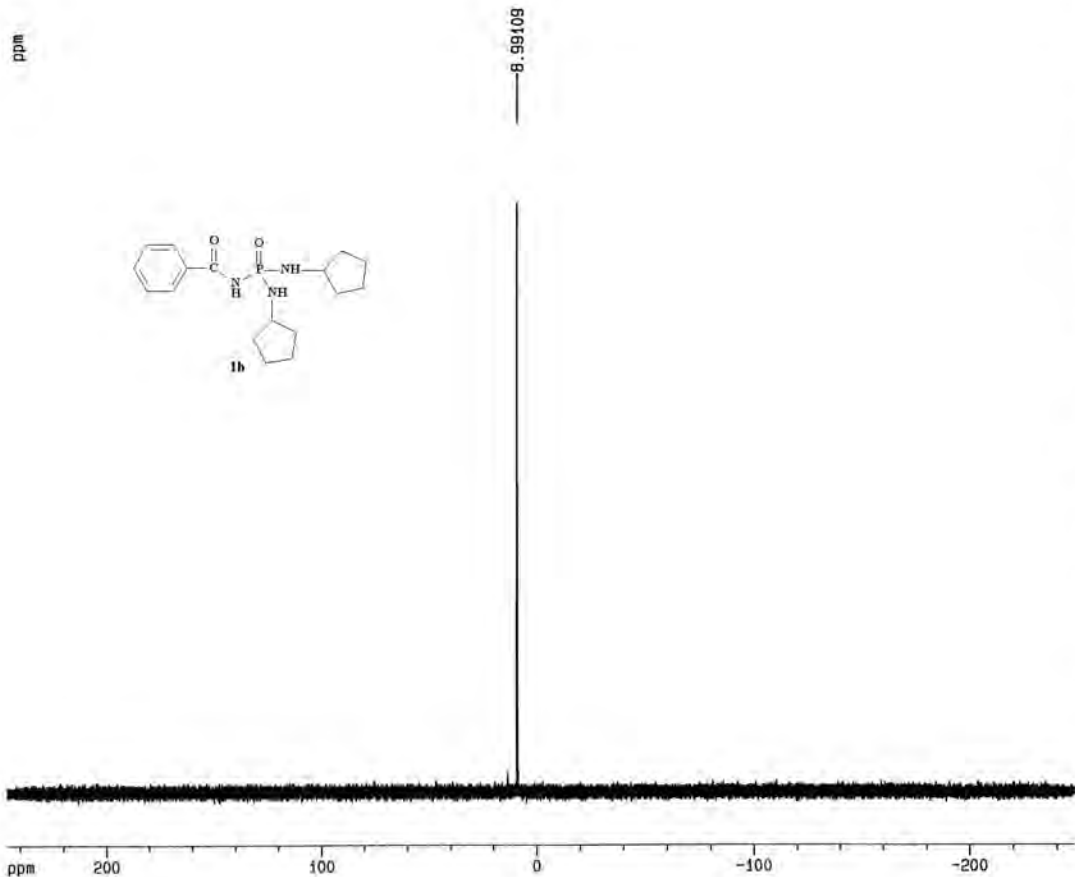
F2 - Acquisition Parameters
 Date_ 20031117
 Time 11.10
 INSTRUM spect
 PROBHD 5 mm BBI 1H-B
 PULPROG zgpg30
 TD 65536
 SOLVENT COC13
 NS 128
 DS 4
 SWH 100000.000 Hz
 FIDRES 1.525879 Hz
 AQ 0.3277300 sec
 RG 6502
 DM 5.000 usec
 DE 5.000 usec
 TE 298.0 K
 D1 2.00000000 sec
 D11 0.03000000 sec
 D12 0.00002000 sec

----- CHANNEL f1 -----
 NUC1 31P
 P1 12.00 usec
 PL1 0.00 dB
 SFO1 202.4560850 MHz

----- CHANNEL f2 -----
 CPDPRG2 waltz16
 NUC2 1H
 PCPD2 80.00 usec
 PL2 4.00 dB
 PL12 26.00 dB
 PL13 26.00 dB
 SFO2 500.1320005 MHz

F2 - Processing parameters
 SI 32768
 SF 202.4562834 MHz
 NDM EM
 SSB 0
 LB 1.00 Hz
 DB 0
 PC 1.40

1D NMR plot parameters
 CX 20.00 cm
 F1P 245.987 ppm
 F1 49801.66 Hz
 F2P -247.947 ppm
 F2 -50198.34 Hz
 PPNCH 24.69669 ppm/cm
 HZCH 5000.00000 Hz/cm



Current Data Parameters
 NAME anarek1
 EXPNO 10
 PROCNO 1

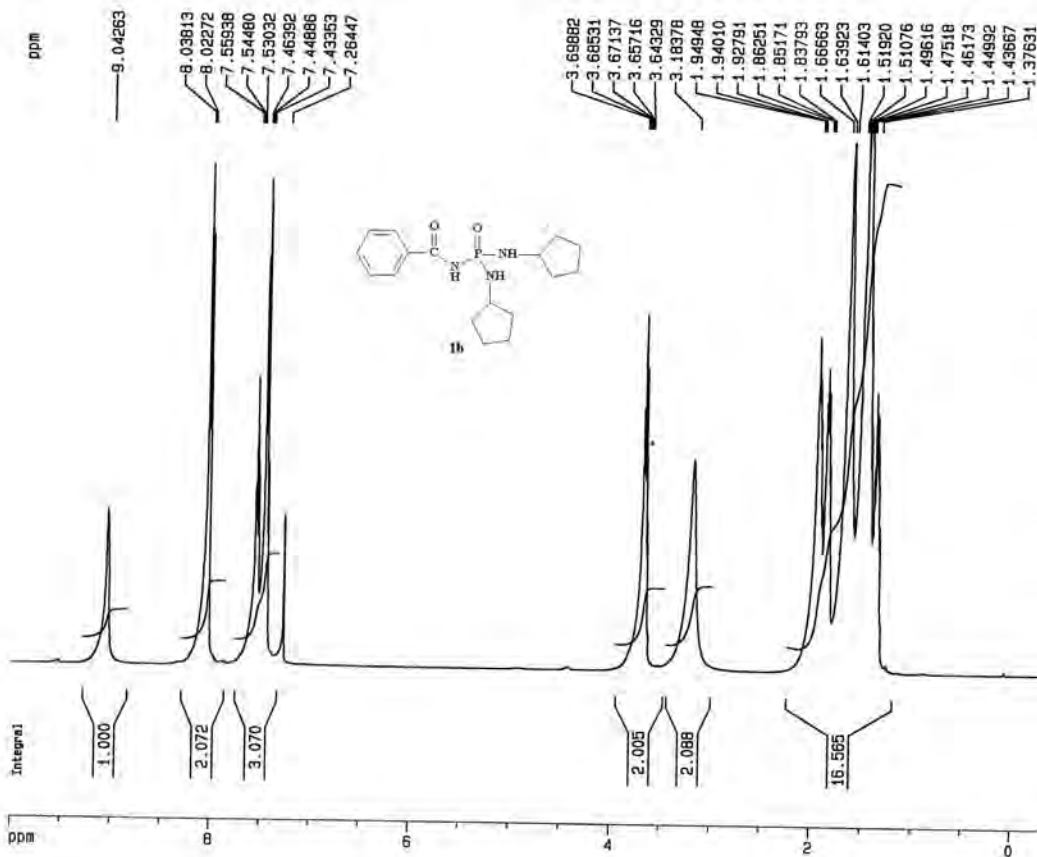
F2 - Acquisition Parameters
 Date_ 20031115
 Time 11.26
 INSTRUM spect
 PROBHD 5 mm BBI 1H-8
 PULPROG zgpg30
 TD 65536
 SOLVENT CDCl3
 NS 128
 DS 4
 SMH 100000.000 Hz
 FIDRES 1.525879 Hz
 AQ 0.3277300 sec
 RG 1625.5
 DM 5.000 usec
 DE 6.00 usec
 TE 298.0 K
 D1 2.0000000 sec
 D11 0.0300000 sec
 D12 0.0000200 sec

----- CHANNEL f1 -----
 NUC1 31P
 P1 12.00 usec
 PL1 0.00 dB
 SFO1 202.4560850 MHz

----- CHANNEL f2 -----
 CPDPRG2 waltz16
 NUC2 1H
 PCPD2 80.00 usec
 PL2 4.00 dB
 PL12 26.00 dB
 PL13 26.00 dB
 SFO2 500.1320005 MHz

F2 - Processing parameters
 SI 65536
 SF 202.4562834 MHz
 NDM EM
 SSB 0
 LB 1.00 Hz
 GB 0
 PC 1.40

1D NMR plot parameters
 CX 20.00 cm
 F1P 245.987 ppm
 F1 49001.66 Hz
 F2P -247.947 ppm
 F2 -50196.33 Hz
 PPMCM 24.69669 ppm/cm
 HZCM 5000.00000 Hz/cm



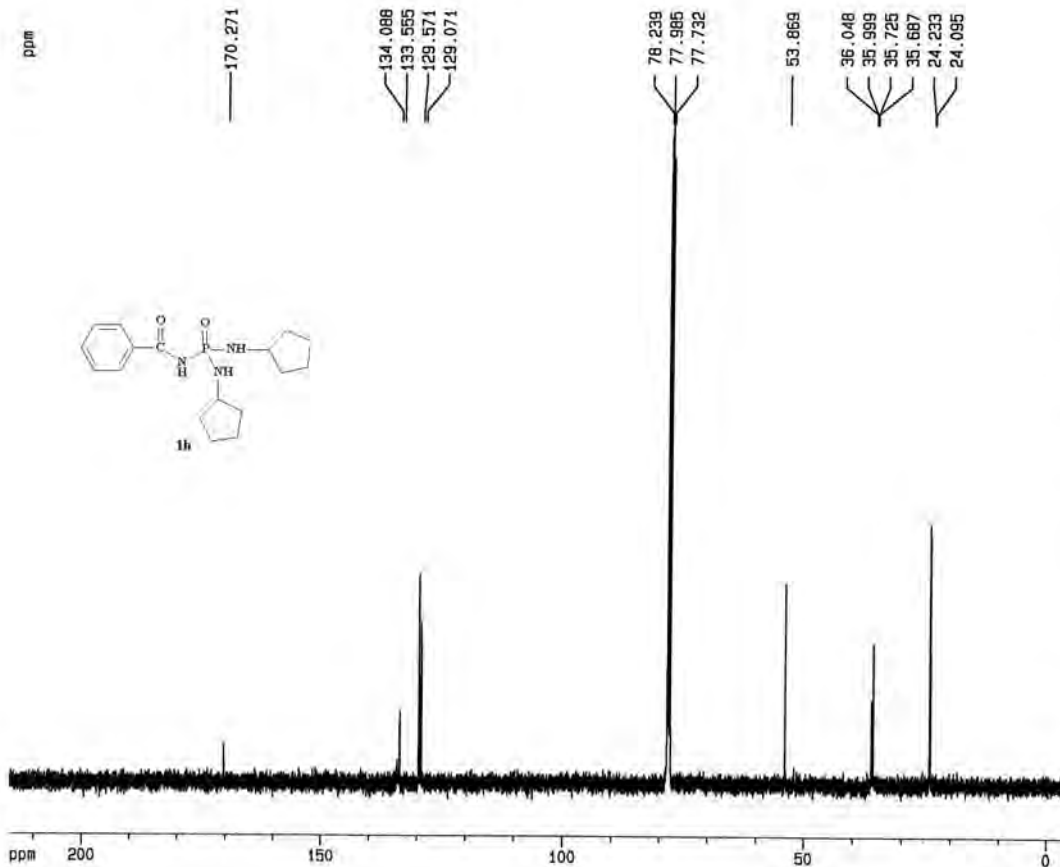
Current Data Parameters
NAME anaraki
EXPNO 11
PROCNO 1

F2 - Acquisition Parameters
Date_ 20031115
Time 11.33
INSTRUM spect
PROBHD 5 mm BBI 1H-B
PULPROG zg
TD 32768
SOLVENT CDCl3
NS 8
DS 2
SWH 8012.820 Hz
FIDRES 0.244532 Hz
AQ 2.0447731 sec
RG 64
DN 62.400 usec
DE 5.00 usec
TE 298.0 K
D1 6.00000000 sec

----- CHANNEL f1 -----
NUC1 1H
P1 8.50 usec
PL1 3.00 dB
SFO1 500.1330883 MHz

F2 - Processing parameters
SI 65536
SF 500.1300101 MHz
WDW EM
SSB 0
LB 0.70 Hz
SB 0
PC 1.00

1D NMR plot parameters
CX 20.00 cm
FIP 10.000 ppm
FX 5001.30 Hz
FZP -0.300 ppm
FZ -150.04 Hz
PPMCH 0.51500 ppm/cm
HZCH 257.56896 Hz/cm



Current Data Parameters
 NAME anarak1
 EXPNO 14
 PROCNO 1

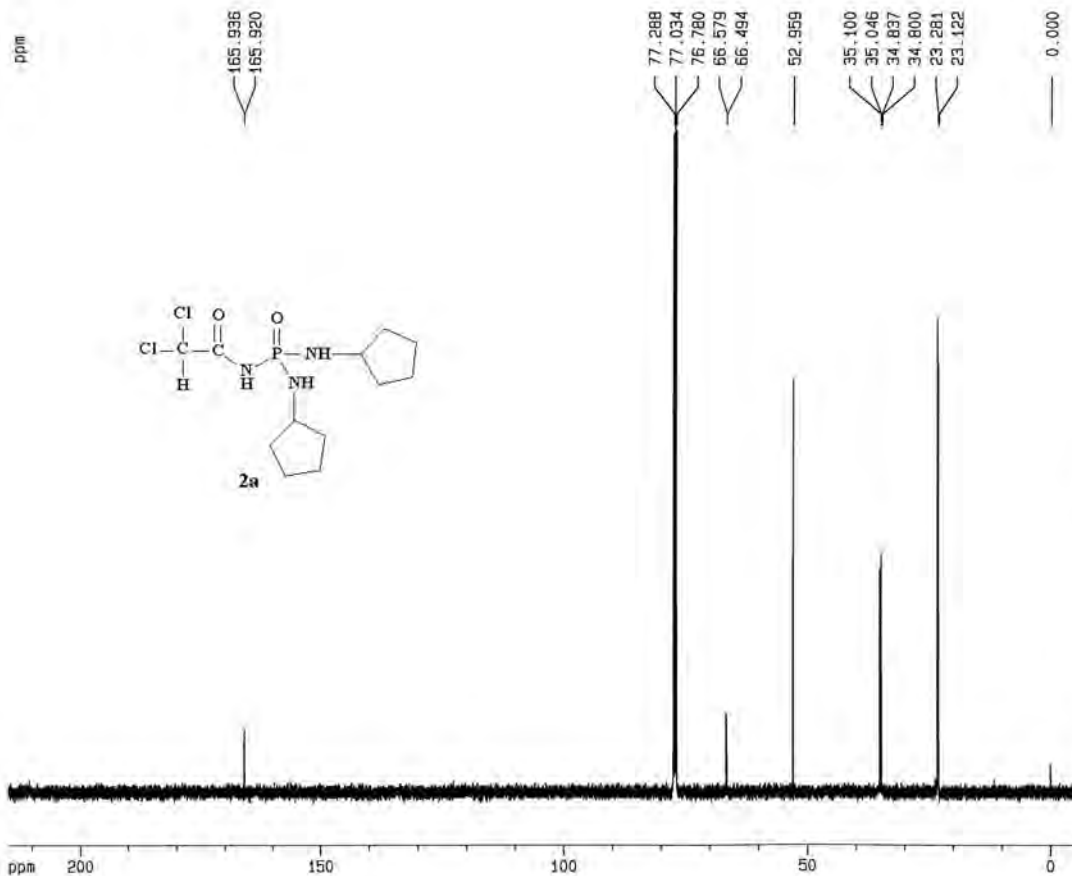
F2 - Acquisition Parameters
 Date_ 20031115
 Time 11.49
 INSTRUM spect
 PROBHD 5 mm BBI 1H-5
 PULPROG zgpg30
 TD 65536
 SOLVENT CDCl3
 NS 1024
 DS 4
 SMI 31446.541 Hz
 FIDRES 0.479836 Hz
 AQ 1.0420724 sec
 RG 64
 DW 15.900 usec
 DE 5.00 usec
 TE 300.0 K
 O1 2.00000000 sec
 O11 0.03000000 sec
 O12 0.00002000 sec

----- CHANNEL f1 -----
 NUC1 13C
 P1 14.00 usec
 PL1 1.00 dB
 SFO1 125.7715719 MHz

----- CHANNEL f2 -----
 CPDPRG2 waltz16
 NUC2 1H
 PCPD2 90.00 usec
 PL2 4.00 dB
 PL12 26.00 dB
 PL13 26.00 dB
 SFO2 500.1320005 MHz

F2 - Processing parameters
 SI 32768
 SF 125.7576676 MHz
 HDW EM
 SSB 0
 LB 1.00 Hz
 GB 0
 PC 1.40

1D NMR plot parameters
 CX 20.00 cm
 F1P 215.000 ppm
 F1 27037.69 Hz
 F2P -5.000 ppm
 F2 -628.79 Hz
 PRMCM 11.00000 ppm/cm
 HZCM 1363.33435 Hz/cm



Current Data Parameters
 NAME mojahed
 EXPNO 606
 PROCNO 1

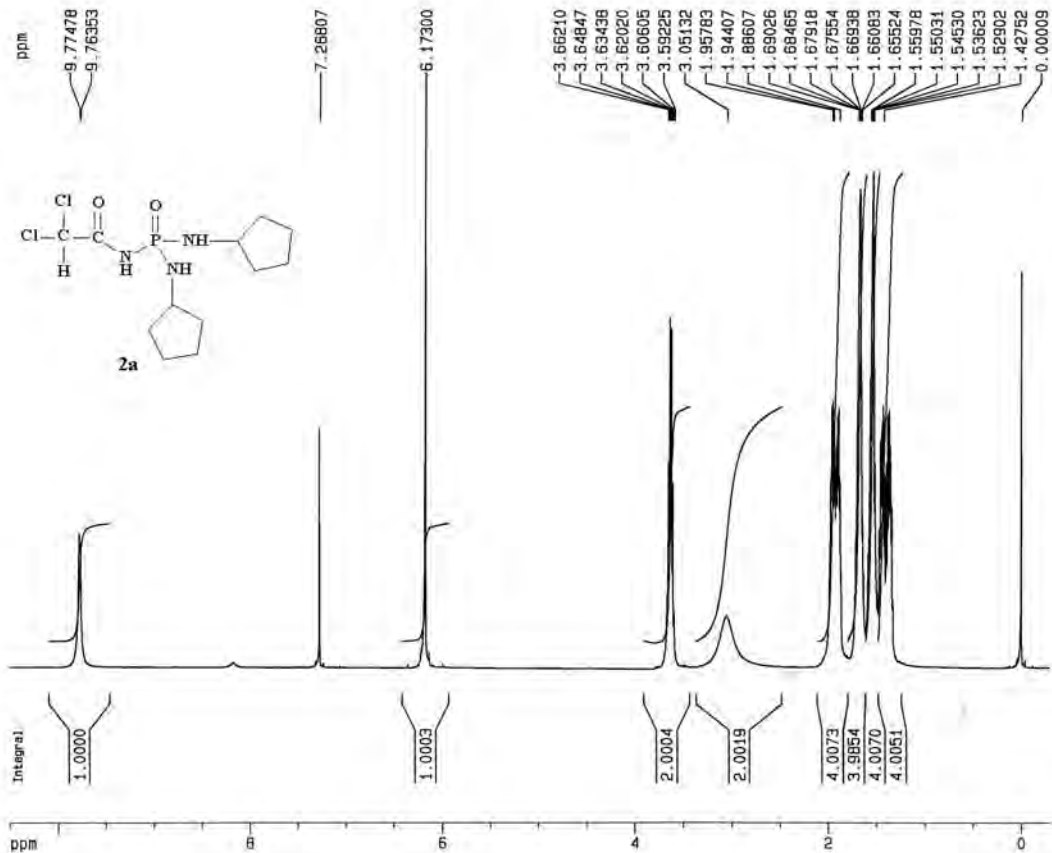
F2 - Acquisition Parameters
 Date_ 20050713
 Time 9.31
 INSTRUM spect
 PROBHD 5 mm Multinu
 PULPROG zgpg30
 TD 65536
 SOLVENT DMSO
 NS 1024
 DS 4
 SWH 31446.541 Hz
 FIDRES 0.479836 Hz
 AQ 1.0420724 sec
 RG 6502
 DW 15.900 usec
 DE 6.00 usec
 TE 298.0 K
 D1 2.0000000 sec
 D11 0.0300000 sec
 D12 0.0000200 sec

----- CHANNEL f1 -----
 NUC1 13C
 P1 20.25 usec
 PL1 1.00 dB
 SFO1 125.7715719 MHz

----- CHANNEL f2 -----
 CPDPRG2 waltz16
 NUC2 1H
 PCPD2 80.00 usec
 PL2 4.00 dB
 PL12 25.00 dB
 PL13 25.00 dB
 SFO2 500.1320005 MHz

F2 - Processing parameters
 SI 131072
 SF 125.7577871 MHz
 WDW EM
 SSB 0
 LB 1.00 Hz
 GB 0
 PC 1.40

1D NMR plot parameters
 CX 20.00 cm
 F1P 215.000 ppm
 F1 27037.92 Hz
 F2P -5.000 ppm
 F2 -629.79 Hz
 PPMCM 11.00000 ppm/cm
 HZCM 1383.33569 Hz/cm



Current Data Parameters
 NAME mojahed
 EXPNO 603
 PROCNO 1

F2 - Acquisition Parameters
 Date_ 20050713
 Time 8.32
 INSTRUM spect
 PROBHD 5 mm Multinu
 PULPROG zg
 TD 32768
 SOLVENT CDCl3
 NS 8
 DS 2
 SMH 10330.578 Hz
 FIDRES 0.315264 Hz
 AQ 1.6860212 sec
 RG 32
 DW 48.400 usec
 DE 6.00 usec
 TE 298.0 K
 D1 6.00000000 sec

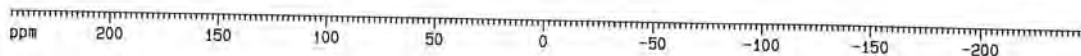
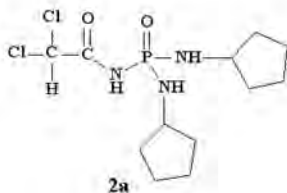
----- CHANNEL f1 -----
 NUC1 1H
 P1 10.00 usec
 PL1 3.00 dB
 SFO1 500.1345012 MHz

F2 - Processing parameters
 SI 65536
 SF 500.1300090 MHz
 MDW EM
 SSB 0
 LB 0.30 Hz
 GB 0
 PC 1.00

1D NMR plot parameters
 CX 20.00 cm
 F1P 10.500 ppm
 F1 5251.37 Hz
 F2P -0.300 ppm
 F2 -150.04 Hz
 PPMCM 0.54000 ppm/cm
 HZCM 270.07022 Hz/cm

ppm

6.79575



Current Data Parameters
 NAME mojahed
 EXPNO 502
 PROCNO 1

F2 - Acquisition Parameters
 Date_ 20050713
 Time 8.20
 INSTRUM spect
 PROBHD 5 mm Multinu
 PULPROG zgpg30
 TD 65536
 SOLVENT CDCl3
 NS 24
 DS 4
 SMH 100000.000 Hz
 FIDRES 1.525879 Hz
 AQ 0.3277300 sec
 RG 11585.2
 OW 5.000 usec
 DE 5.00 usec
 TE 299.0 K
 D1 2.00000000 sec
 D11 0.03000000 sec
 D12 0.00020000 sec

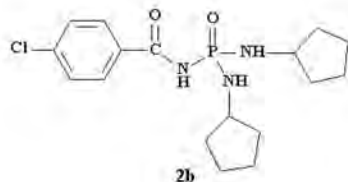
===== CHANNEL f1 =====
 NUC1 31P
 P1 18.00 usec
 PL1 0.00 dB
 SFO1 202.4560850 MHz

===== CHANNEL f2 =====
 CPDPRG2 waltz16
 NUC2 1H
 PCPD2 90.00 usec
 PL2 4.00 dB
 PL12 26.00 dB
 PL13 26.00 dB
 SFO2 500.1320005 MHz

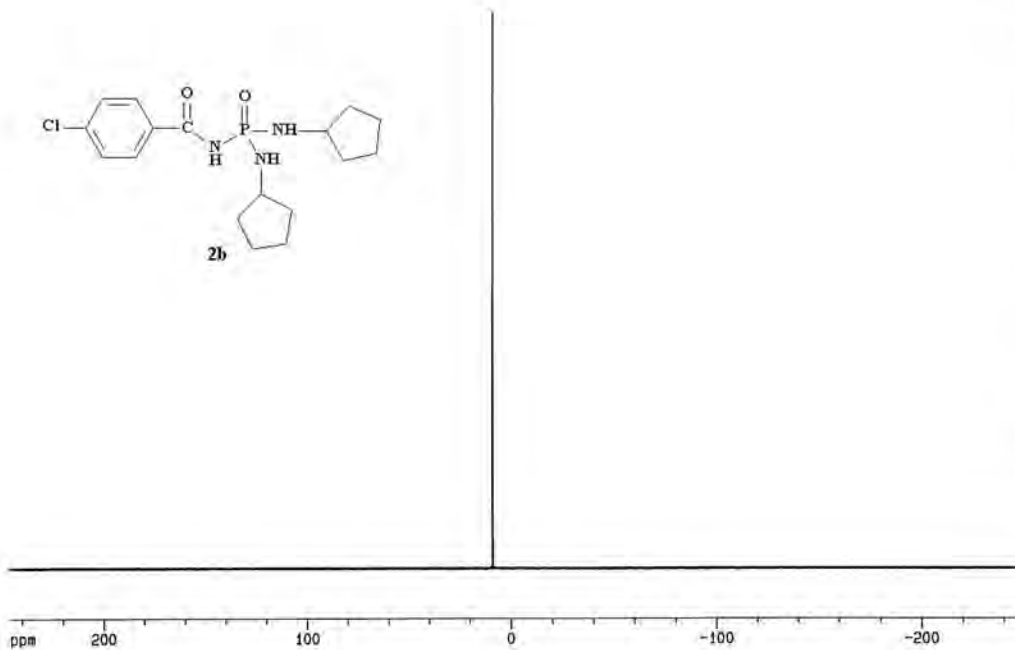
F2 - Processing parameters
 SI 65536
 SF 202.4562834 MHz
 WDW EM
 SSB 0
 LB 1.00 Hz
 GB 0
 PC 1.40

1D NMR plot parameters
 CX 20.00 cm
 F1P 245.987 ppm
 F1 49801.65 Hz
 F2P -247.346 ppm
 F2 -50198.32 Hz
 PPMCH 24.69868 ppm/cm
 HZCH 4999.99902 Hz/cm

ppm



8.86287



Current Data Parameters
 NAME sadan1
 EXPNO 612
 PROCNO 1

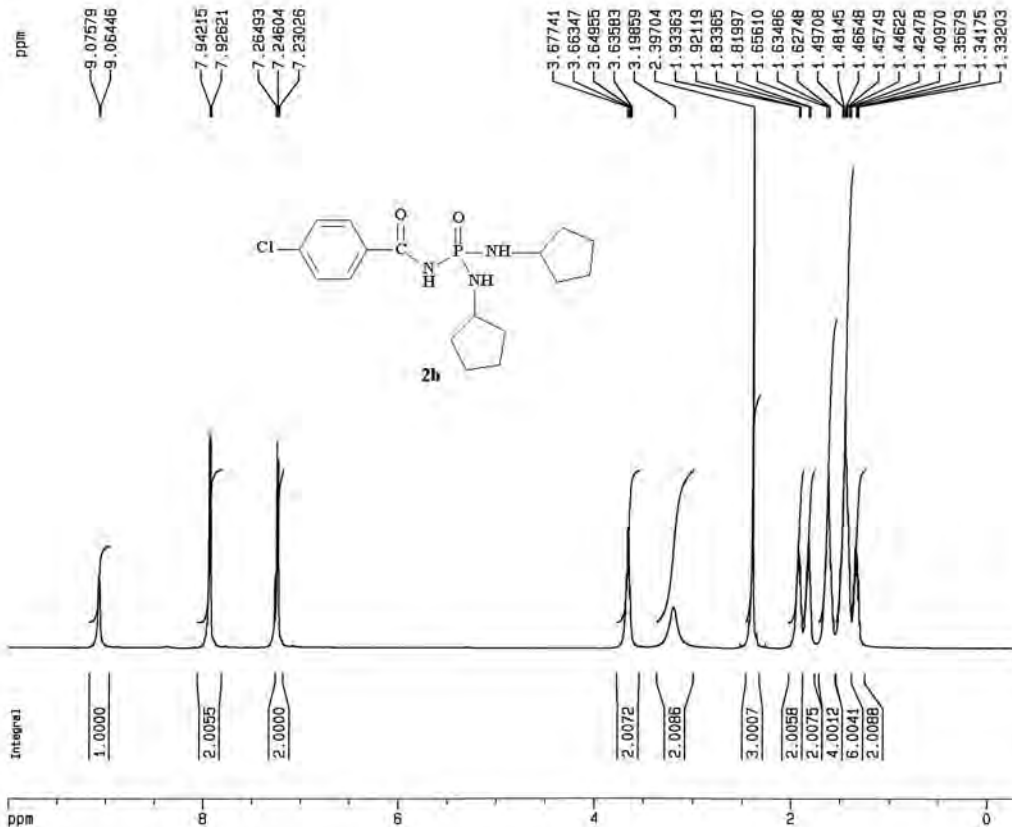
F2 - Acquisition Parameters
 Date_ 20051002
 Time 11:58
 INSTRUM spect
 PROBRD 5 mm Multinu
 PULPROG zgpg30
 TD 65536
 SOLVENT CDCl3
 NS 128
 DS 4
 SWH 100000.000 Hz
 FIDRES 1.526879 Hz
 AQ 0.3277300 sec
 RG 2896.3
 DW 5.000 usec
 DE 6.00 usec
 TE 298.0 K
 O1 2.00000000 sec
 O11 0.03000000 sec
 O12 0.00002000 sec

----- CHANNEL F1 -----
 NUC1 31P
 P1 18.00 usec
 PL1 0.00 dB
 SF01 202.4560850 MHz

----- CHANNEL F2 -----
 CPDPRG2 waltz16
 NUC2 1H
 PCPD2 80.00 usec
 PL2 4.00 dB
 PL12 26.00 dB
 PL13 25.00 dB
 SFO2 500.1320005 MHz

F2 - Processing parameters
 SI 32768
 SF 202.4562634 MHz
 WDW EM
 SSB 0
 LB 1.00 Hz
 GB 0
 PC 1.40

1D NMR plot parameters
 CX 20.00 cm
 F1P 245.987 ppm
 F1 49801.65 Hz
 F2P -247.947 ppm
 F2 -50186.33 Hz
 PPMCM 24.89569 ppm/cm
 HZCM 4999.99951 Hz/cm



Current Data Parameters
 NAME madan1
 EXPNO 613
 PROCNO 1

F2 - Acquisition Parameters

Date_ 20061002
 Time 12.10
 INSTRUM spect
 PROBHD 5 mm Multinu
 PULPROG zg
 TD 32768
 SOLVENT CDCl3
 NS 8
 DS 2
 SWH 10330.578 Hz
 FIDRES 0.315264 Hz
 AQ 1.5860212 sec
 RG 40.3
 DW 48.400 usec
 DE 6.00 usec
 TE 298.0 K
 D1 6.00000000 sec

----- CHANNEL f1 -----

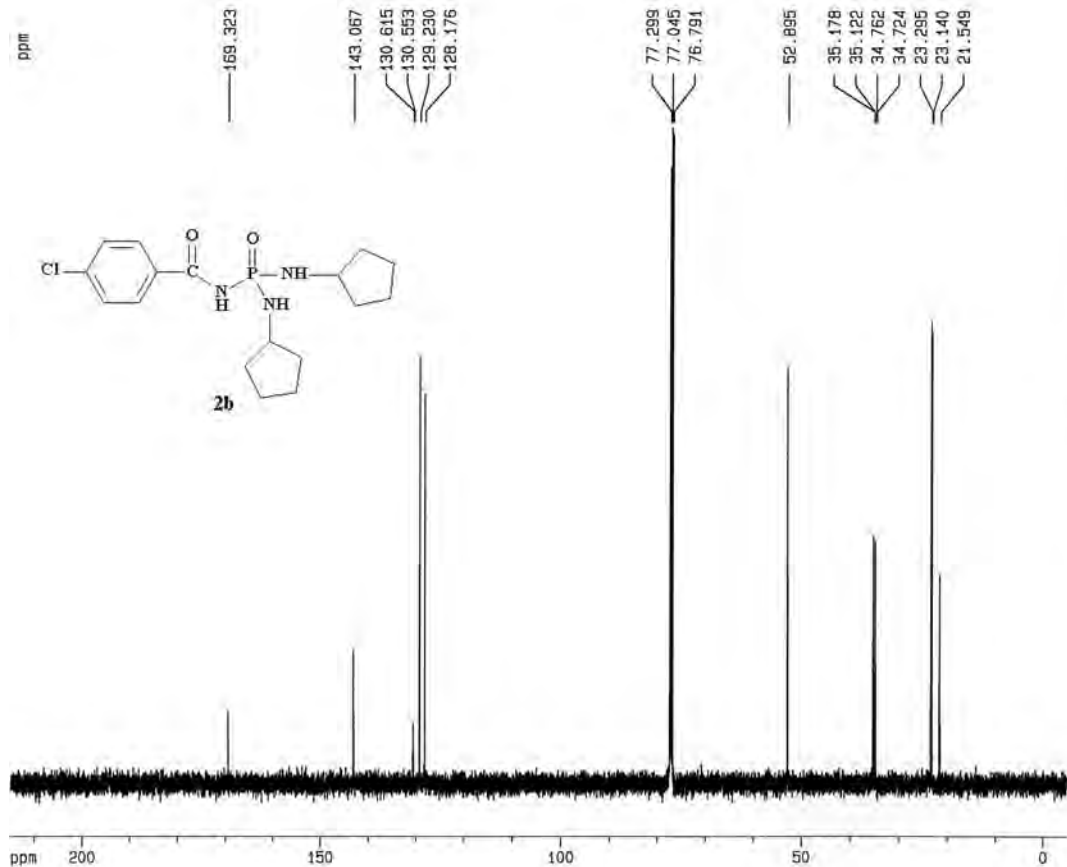
NUC1 1H
 P1 10.00 usec
 PL1 3.00 dB
 SFO1 500.1330885 MHz

F2 - Processing parameters

SF 16384
 SF 500.1300109 MHz
 WDW EM
 SSB 0
 LB 1.00 Hz
 GB 0
 PC 1.00

1D NMR plot parameters

CX 20.00 cm
 F1P 10.000 ppm
 F1 5001.30 Hz
 F2P -0.300 ppm
 F2 -150.04 Hz
 PPMCN 0.51500 ppm/cm
 HZCN 257.56696 Hz/cm



Current Data Parameters
 NAME eadan1
 EXPNO 616
 PROCNO 1

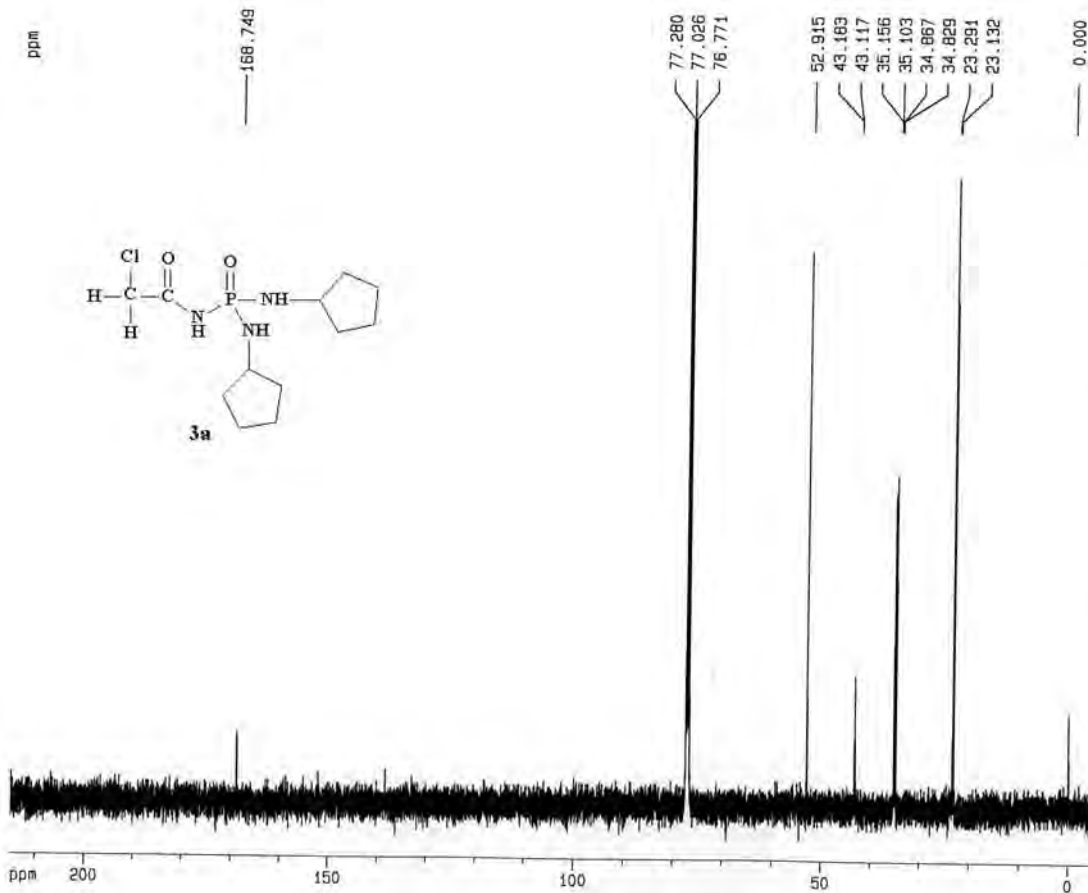
F2 - Acquisition Parameters
 Date_ 20051002
 Time 12.22
 INSTRUM spect
 PROBHD 5 mm Multinu
 PULPROG zgpg30
 TD 32768
 SOLVENT CDCl3
 NS 407
 DS 4
 SMO 31446.541 Hz
 FIDRES 0.959672 Hz
 AQ 0.5210612 sec
 RG 9195.2
 DM 15.900 usec
 DE 5.00 usec
 TE 300.0 K
 D1 2.0000000 sec
 D11 0.0300000 sec
 D12 0.0000200 sec

===== CHANNEL f1 =====
 NUC1 13C
 P1 20.25 usec
 PL1 1.00 dB
 SFO1 125.7715719 MHz

===== CHANNEL f2 =====
 CPDPRG2 waltz16
 NUC2 1H
 PCPD2 80.00 usec
 PL2 4.00 dB
 PL12 25.00 dB
 PL13 26.00 dB
 SFO2 500.1320005 MHz

F2 - Processing parameters
 SI 32768
 SF 125.7577871 MHz
 MDW EM
 SSB 0
 LB 1.00 Hz
 GB 0
 PC 1.40

1D NMR plot parameters
 CX 20.00 cm
 F1P 215.000 ppm
 F1 27037.92 Hz
 F2P -5.000 ppm
 F2 -628.79 Hz
 PPMCH 11.00000 ppm/cm
 HZCH 1383.33569 Hz/cm



Current Data Parameters
 NAME madani
 EXFNO 606
 PROCNO 1

F2 - Acquisition Parameters

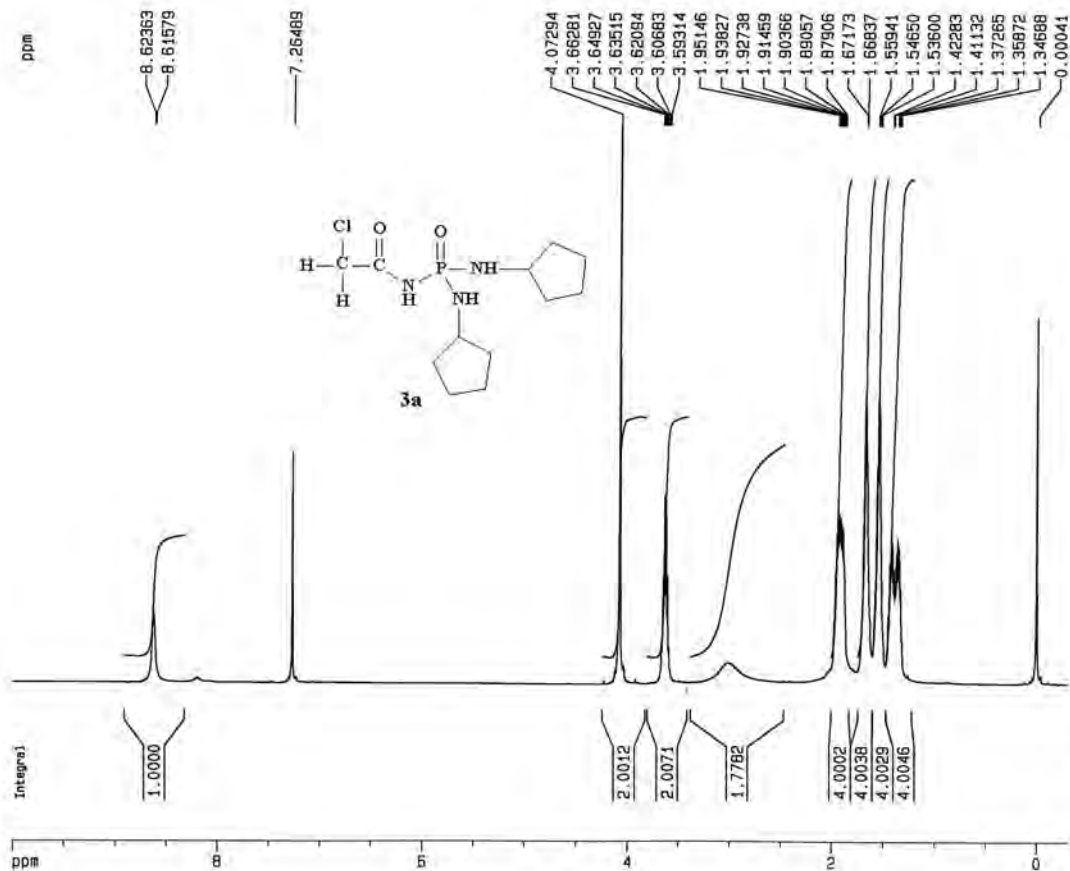
Date_ 20050813
 Time 11.40
 INSTRUM spect
 PROBHD 5 mm Multinu
 PULPROG zgpg30
 TD 65536
 SOLVENT CDCl3
 NS 2048
 DS 4
 SMH 31446.541 Hz
 FIDRES 0.479836 Hz
 AQ 1.0420724 sec
 RG 2298.8
 DW 15.900 usec
 DE 6.00 usec
 TE 300.0 K
 D1 2.00000000 sec
 D11 0.03000000 sec
 D12 0.00002000 sec

===== CHANNEL f1 =====
 NUC1 13C
 P1 20.25 usec
 PL1 1.00 dB
 SFO1 125.7715719 MHz

===== CHANNEL f2 =====
 CPROG2 waltz16
 NUC2 1H
 POC2 80.00 usec
 PL2 4.00 dB
 PL12 26.00 dB
 PL13 26.00 dB
 SFO2 500.1320005 MHz

F2 - Processing parameters
 SI 32768
 SF 125.7577871 MHz
 NDW 0
 SSB EM
 LB 1.00 Hz
 GB 0
 PC 1.40

1D NMR plot parameters
 CX 20.00 cm
 F1P 215.000 ppm
 F1 27037.92 Hz
 F2P -5.000 ppm
 F2 -828.79 Hz
 PPMCH 11.00000 ppm/cm
 HZCM 1383.33569 Hz/cm



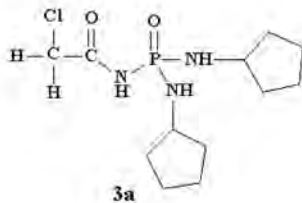
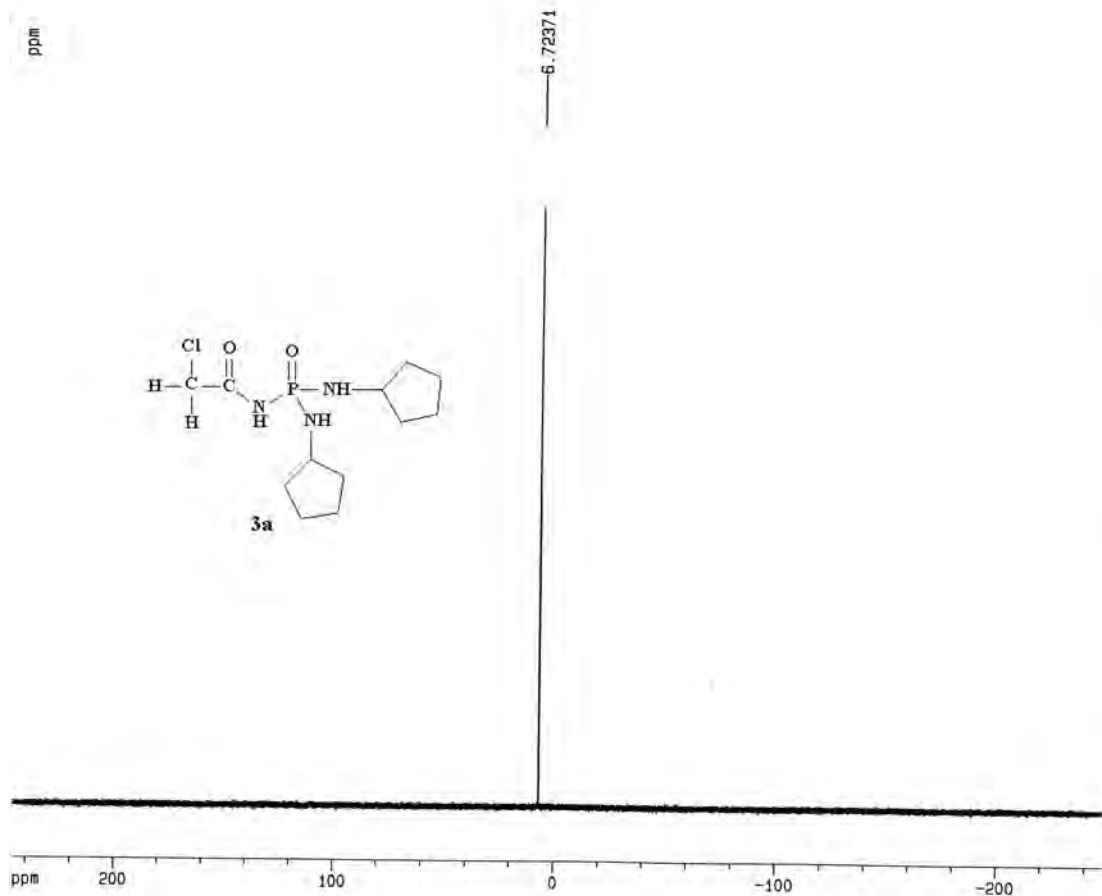
Current Data Parameters
 NAME madani
 EXPNO 603
 PROCNO 1

F2 - Acquisition Parameters
 Date_ 20050813
 Time 11.11
 INSTRUM spect
 PROBHD 5 mm Multinu
 PULPROG zg
 TD 32768
 SOLVENT CDC13
 NS 8
 DS 2
 SWH 10330.578 Hz
 FIDRES 0.315264 Hz
 AQ 1.5860212 sec
 RG 90.5
 DW 48.400 usec
 DE 6.00 usec
 TE 298.0 K
 D1 6.00000000 sec

CHANNEL f1
 NUC1 1H
 P1 10.00 usec
 PL1 3.00 dB
 SFO1 500.1330685 MHz

F2 - Processing parameters
 SI 16384
 SF 500.1300109 MHz
 WDW EM
 SSB 0
 LB 1.00 Hz
 SB 0
 PC 1.00

1D NMR plot parameters
 CX 20.00 cm
 F1P 10.000 ppm
 F1 5001.30 Hz
 F2P -0.300 ppm
 F2 -150.04 Hz
 PPMCH 0.51500 ppm/cm
 HZCH 257.56693 Hz/cm



Current Data Parameters
 NAME madan1
 EXPNO 602
 PROCNO 1

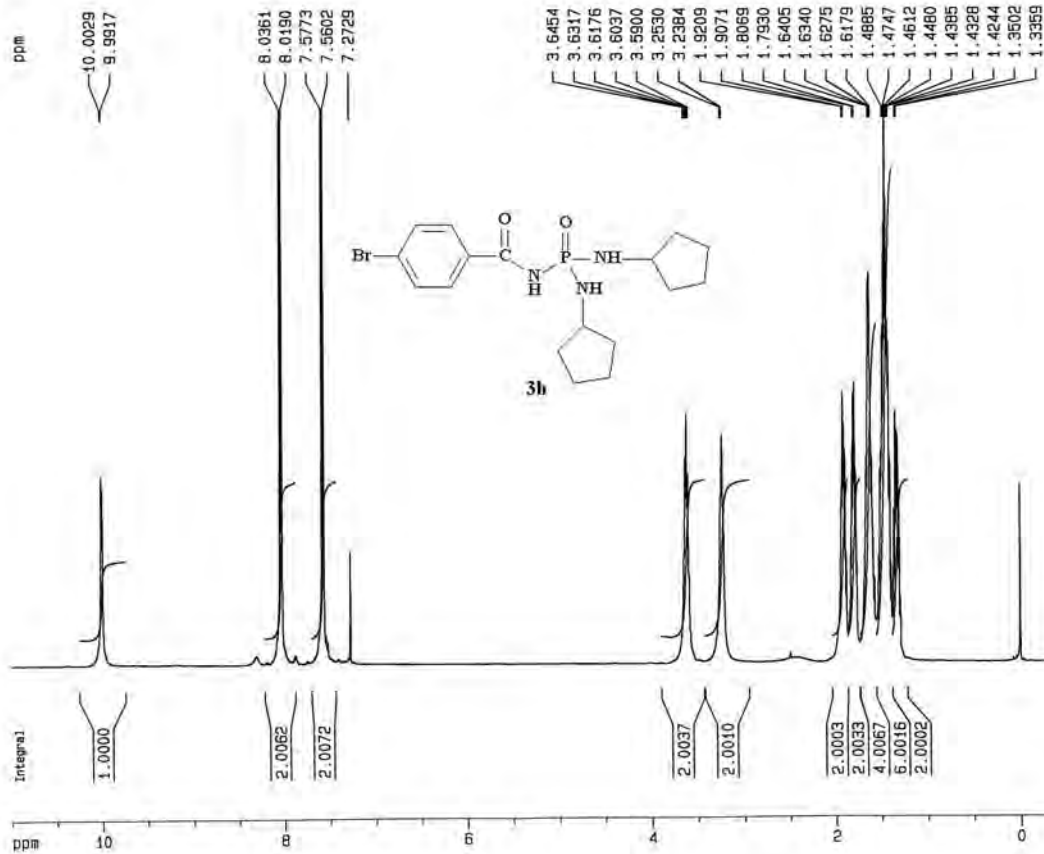
F2 - Acquisition Parameters
 Date_ 20050813
 Time 11.05
 INSTRUM spect
 PROBHD 5 mm Multinu
 PULPROG zgpg30
 TD 65536
 SOLVENT CDCl3
 NS 80
 DS 4
 SWH 100000.000 Hz
 FIDRES 1.528879 Hz
 AQ 0.3277300 sec
 RG 2896.3
 DW 5.000 usec
 DE 5.00 usec
 TE 298.0 K
 O1 2.00000000 sec
 O11 0.03000000 sec
 O12 0.00002000 sec

----- CHANNEL f1 -----
 NUC1 31P
 P1 18.00 usec
 PL1 0.00 dB
 SFO1 202.4560850 MHz

----- CHANNEL f2 -----
 CPDPRG2 waltz16
 NUC2 1H
 PCPD2 80.00 usec
 PL2 4.00 dB
 PL12 26.00 dB
 PL13 26.00 dB
 SFO2 500.1320005 MHz

F2 - Processing parameters
 SI 32768
 SF 202.4562834 MHz
 MDW EM
 SSB 0
 LB 1.00 Hz
 GB 0
 PC 1.40

1D NMR plot parameters
 CX 20.00 cm
 F1P 245.987 ppm
 F1 49901.66 Hz
 F2P -247.947 ppm
 F2 -50198.33 Hz
 FPMCM 24.65669 ppm/cm
 HZCM 4999.99951 Hz/cm



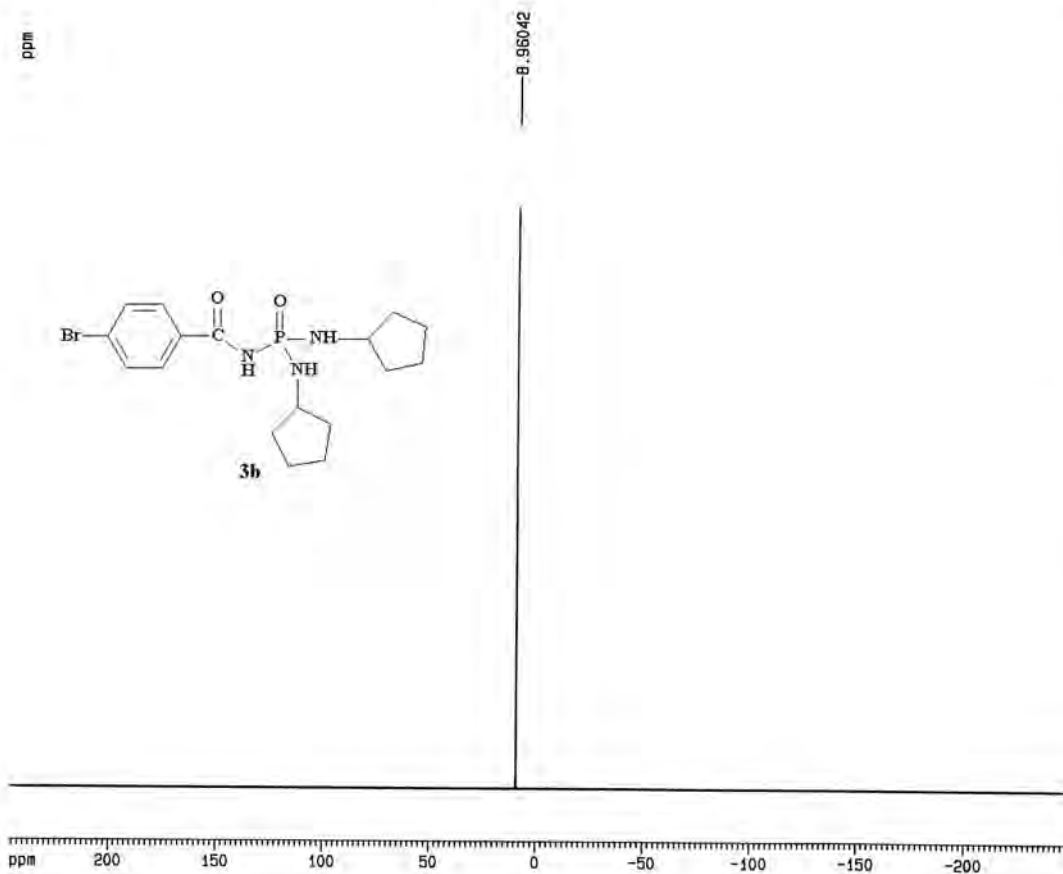
Current Data Parameters
 NAME mojahed
 EXPNO 613
 PROCNO 1

F2 - Acquisition Parameters
 Date_ 20050724
 Time 8.33
 INSTRUM spect
 PROBHD 5 mm Multinu
 PULPROG zg
 TD 32768
 SOLVENT CDCl3
 NS 8
 DS 2
 SWH 10330.578 Hz
 FIDRES 0.315264 Hz
 AQ 1.5880212 sec
 RG 20.2
 DW 48.400 usec
 DE 6.00 usec
 TE 298.0 K
 D1 6.00000000 sec

----- CHANNEL f1 -----
 NUC1 1H
 P1 10.00 usec
 PL1 3.00 dB
 SFO1 500.1345012 MHz

F2 - Processing parameters
 SI 65536
 SF 500.1300060 MHz
 WDW EM
 SSB 0
 LB 0.30 Hz
 GB 0
 PC 1.00

1D NMR plot parameters
 CX 20.00 cm
 F1P 11.000 ppm
 F1 5501.43 Hz
 F2P -0.300 ppm
 F2 -150.04 Hz
 PPMCM 0.58500 ppm/cm
 HZCM 282.57346 Hz/cm



Current Data Parameters
 NAME molahed
 EXPNO 612
 PROCNO 1

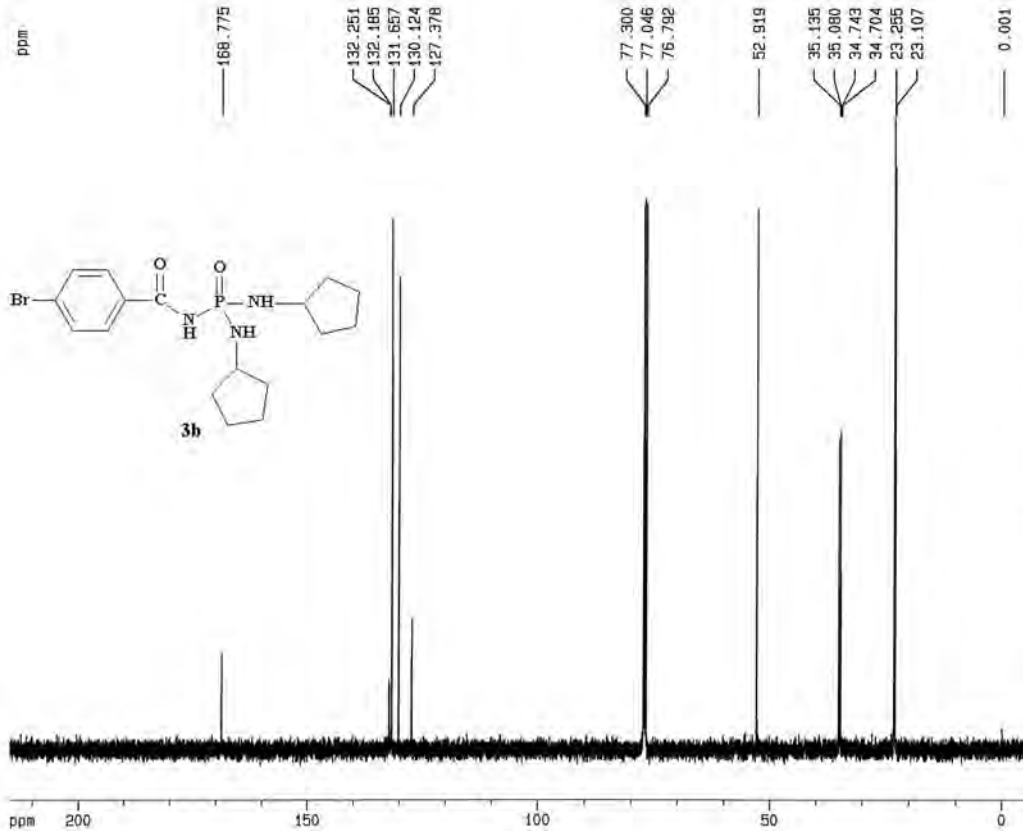
F2 - Acquisition Parameters
 Date_ 20050724
 Time 8.28
 INSTRUM spect
 PROBHD 5 mm Multinu
 PULPROG zgpg30
 TD 65536
 SOLVENT CDCl3
 NS 128
 DS 4
 SWH 100000.000 Hz
 FIDRES 1.825879 Hz
 AQ 0.3277300 sec
 RB 4597.6
 DM 5.000 usec
 DE 5.000 usec
 TE 298.0 K
 D1 2.00000000 sec
 D11 0.03000000 sec
 D12 0.00002000 sec

----- CHANNEL f1 -----
 NUC1 31P
 P1 18.00 usec
 PL1 0.00 dB
 SFO1 202.4560850 MHz

----- CHANNEL f2 -----
 CPDPRG2 waltz16
 NUC2 1H
 PCPD2 80.00 usec
 PL2 4.00 dB
 PL12 26.00 dB
 PL13 26.00 dB
 SFO2 500.1320005 MHz

F2 - Processing parameters
 SI 65536
 SF 202.4562834 MHz
 MDW EM
 SSB 0
 LB 1.00 Hz
 GB 0
 PC 1.40

1D NMR plot parameters
 CX 20.00 cm
 F1P 245.987 ppm
 F1 49801.65 Hz
 F2P -247.946 ppm
 F2 -50198.32 Hz
 PPMCH 24.69682 ppm/cm
 HZCM 4989.99902 Hz/cm



Current Data Parameters
 NAME molhed
 EXPNO 616
 PROCNO 1

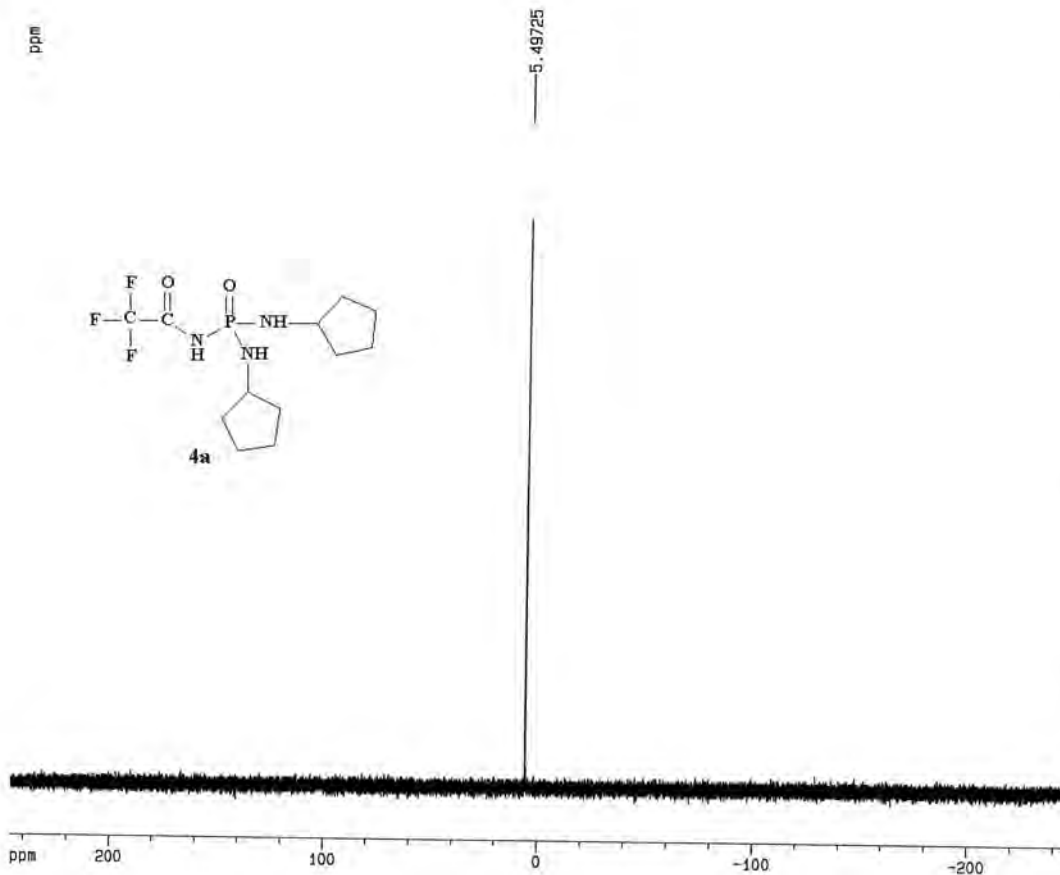
F2 - Acquisition Parameters
 Date_ 20050724
 Time 8.55
 INSTRUM spect
 PROBHD 5 mm Multinu
 PULPROG zgpg30
 TO 69536
 SOLVENT DMSO
 NS 325
 DS 4
 SWH 31446.541 Hz
 FIDRES 0.475836 Hz
 AQ 1.0420724 sec
 RG 5792.0
 DM 15.500 usec
 DE 5.00 usec
 TE 298.0 K
 D1 2.0000000 sec
 D11 0.0300000 sec
 D12 0.0002000 sec

===== CHANNEL f1 =====
 NUC1 13C
 P1 20.25 usec
 PL1 1.00 dB
 SFO1 125.7715719 MHz

===== CHANNEL f2 =====
 CPDPRG2 waltz16
 NUC2 1H
 PCPD2 80.00 usec
 PL2 4.00 dB
 PL12 25.00 dB
 PL13 25.00 dB
 SFO2 500.1320005 MHz

F2 - Processing parameters
 SI 131072
 SF 125.7577983 MHz
 NDM EM
 SSB 0
 LB 1.00 Hz
 SB 0
 RC 1.40

1D NMR plot parameters
 CX 20.00 cm
 F1P 215.000 ppm
 F1 27037.92 Hz
 F2P -5.000 ppm
 F2 -628.79 Hz
 PPMCH 11.00000 ppm/cm
 HZCH 1363.33599 Hz/cm



Current Data Parameters
 NAME medan1
 EXPNO 607
 PROCNO 1

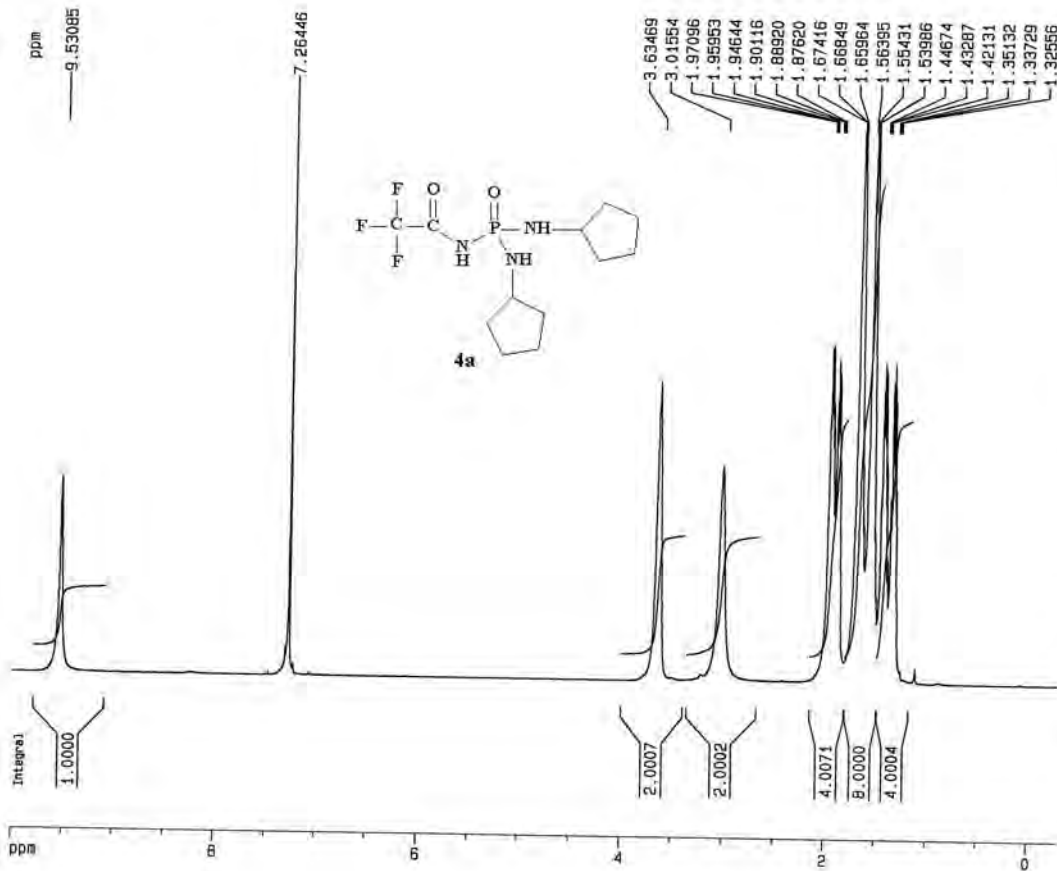
F2 - Acquisition Parameters
 Date_ 20050917
 Time 7.18
 INSTRUM spect
 PROBHD 5 mm Multinu
 PULPROG zgpg30
 TD 65536
 SOLVENT CDCl3
 NS 32
 DS 4
 SWH 100000.000 Hz
 FIDRES 1.525875 Hz
 AQ 0.3277300 sec
 RG 2895.3
 DW 5.000 usec
 DE 6.00 usec
 TE 299.0 K
 D1 2.00000000 sec
 D11 0.03000000 sec
 D12 0.00002000 sec

===== CHANNEL f1 =====
 NUC1 31P
 P1 18.00 usec
 PL1 0.00 dB
 SFO1 202.4560850 MHz

===== CHANNEL f2 =====
 CPOPRG2 wa1tz16
 NUC2 1H
 PCPD2 80.00 usec
 PL2 4.00 dB
 PL12 26.00 dB
 PL13 26.00 dB
 SFO2 500.1328005 MHz

F2 - Processing parameters
 SI 32768
 SF 202.4562834 MHz
 WDW EM
 SSB 0
 LB 1.00 Hz
 GB 0
 PC 1.40

1D NMR plot parameters
 CX 20.00 cm
 F1P 245.987 ppm
 F1 49801.66 Hz
 F2P -247.947 ppm
 F2 -50159.33 Hz
 PPMCM 24.59669 ppm/cm
 HZCM 4999.98961 Hz/cm



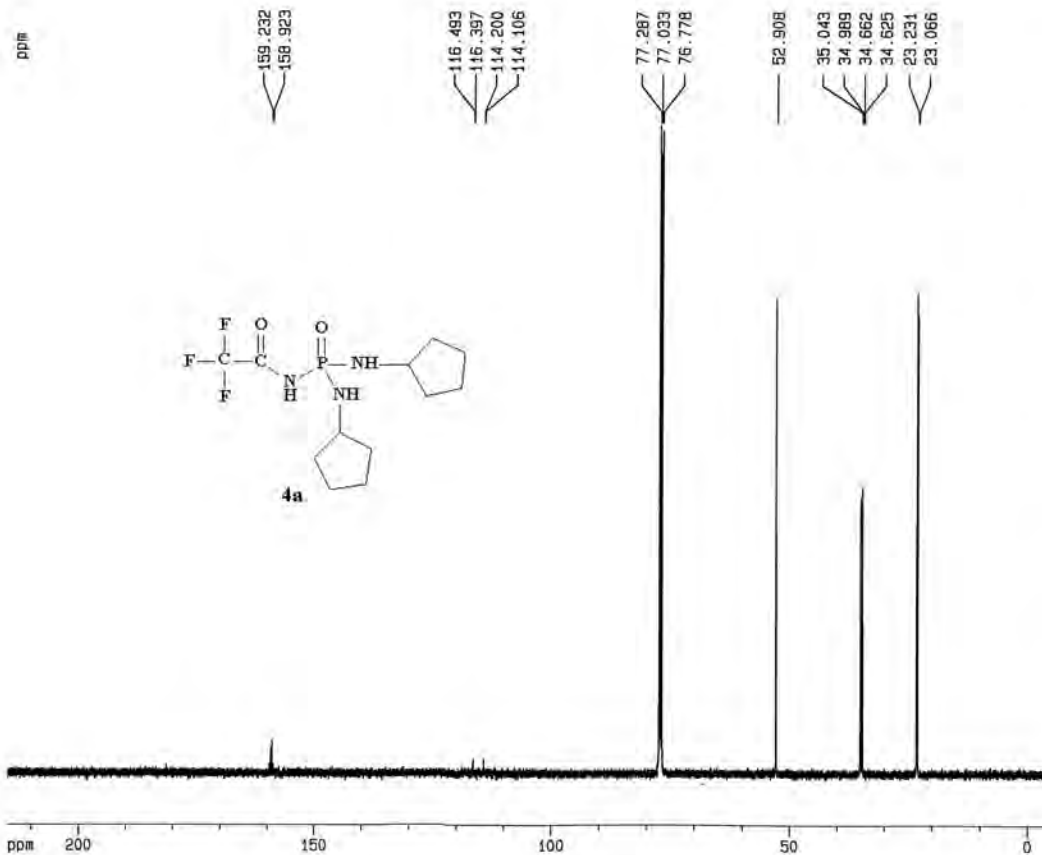
Current Data Parameters
NAME madani
EXPNO 608
PROCNO 1

F2 - Acquisition Parameters
Date_ 20050917
Time 7.22
INSTRUM spect
PROBHD 5 mm Multinu
PULPROG zg
TD 32768
SOLVENT CDC13
NS 8
DS 2
SWH 10330.578 Hz
FIDRES 0.315264 Hz
AQ 1.5860212 sec
RG 90.5
DM 48.400 usec
DE 6.00 usec
TE 298.0 K
D1 6.00000000 sec

----- CHANNEL f1 -----
NUC1 1H
P1 10.00 usec
PL1 3.00 dB
SFO1 500.1330885 MHz

F2 - Processing parameters
SI 16384
SF 500.1300109 MHz
WDW EM
SSB 0
LB 1.00 Hz
SB 0
PC 1.00

1D NMR plot parameters
CX 20.00 cm
F1P 10.000 ppm
F1 5001.30 Hz
F2P -0.300 ppm
F2 -150.04 Hz
PPMCH 0.51500 ppm/cm
HZCM 257.56696 Hz/cm



Current Data Parameters
NAME madani
EXPNO 611
PROCNO 1

F2 - Acquisition Parameters
Date_ 20090925
Time 11.40
INSTRUM spect
PROBHD 5 mm Multinu
PULPROG zgpg30
TD 32768
SOLVENT CDCl3
NS 3545
DS 4
SWH 31446.541 Hz
FIDRES 0.959672 Hz
AQ 0.5210612 sec
RG 8195.2
DW 15.900 usec
DE 6.00 usec
TE 300.0 K
D1 2.00000000 sec
D11 0.03000000 sec
D12 0.00002000 sec

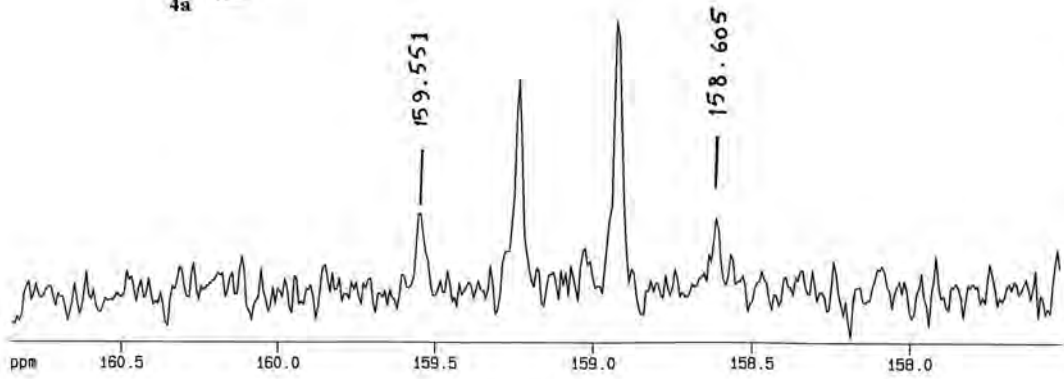
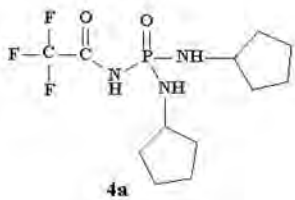
----- CHANNEL f1 -----
NUC1 13C
P1 20.25 usec
PL1 1.00 dB
SFO1 125.7715719 MHz

----- CHANNEL f2 -----
CPDPRG2 waltz16
NUC2 1H
PCPD2 80.00 usec
PL2 4.00 dB
PL12 26.00 dB
PL13 26.00 dB
SFO2 500.1320005 MHz

F2 - Processing parameters
SI 32768
SF 125.7577871 MHz
WDW EM
SSB 0
LB 1.00 Hz
GB 0
PC 1.40

1D NMR plot parameters
CX 20.00 cm
F1P 215.000 ppm
F1 27037.82 Hz
F2P -5.000 ppm
F2 -828.79 Hz
PPMCH 11.00000 ppm/cm
HZCM 1393.33669 Hz/cm

ppm



Current Data Parameters
NAME medan1
EXPNO 611
PROCNO 1

F2 - Acquisition Parameters
Date_ 20050825
Time 11.40
INSTRUM spect
PROBHD 5 mm Multinu
PULPROG zgpg30
TD 32768
SOLVENT COC13
NS 3545
DS 4
SWH 31446.541 Hz
FIDRES 0.959672 Hz
AQ 0.5210612 sec
RG 9195.2
OH 15.900 usec
DE 5.00 usec
TE 300.0 K
D1 2.00000000 sec
D11 0.03000000 sec
D12 0.00002000 sec

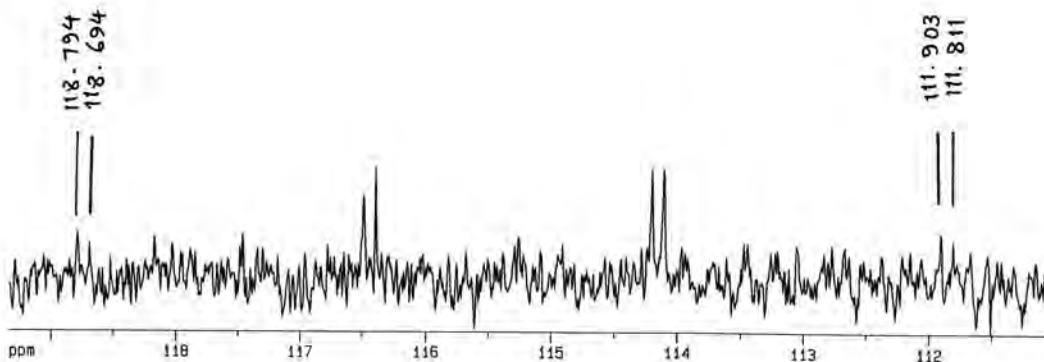
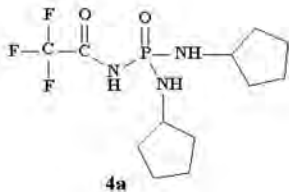
===== CHANNEL f1 =====
NUC1 15N
P1 20.25 usec
PL1 1.00 dB
SFO1 125.7715719 MHz

===== CHANNEL f2 =====
CPOPRG2 waltz16
NUC2 1H
PCPD2 80.00 usec
PL2 4.00 dB
PL12 26.00 dB
PL13 26.00 dB
SFO2 500.1320005 MHz

F2 - Processing parameters
SI 32768
SF 125.7577871 MHz
WDW EM
SSB 0
LB 1.00 Hz
GB 0
PC 1.40

1D NMR plot parameters
CX 20.00 cm
F1P 150.855 ppm
F1 20228.71 Hz
F2P 157.522 ppm
F2 19809.65 Hz
PPMCM 0.15662 ppm/cm
HZCM 20.95317 Hz/cm

ppm



Current Data Parameters
NAME modani
EXPNO 611
PROCNO 1

F2 - Acquisition Parameters
Date_ 20050825
Time 11.40
INSTRUM spect
PROBHD 5 mm Multinu
PULPROG zgpg30
TD 32768
SOLVENT CDCl3
NS 3545
DS 4
SWH 31446.541 Hz
FIDRES 0.959672 Hz
AQ 0.6210512 sec
RG 9195.2
DW 15.900 usec
DE 6.00 usec
TE 300.0 K
D1 2.0000000 sec
D11 0.0300000 sec
D12 0.0002000 sec

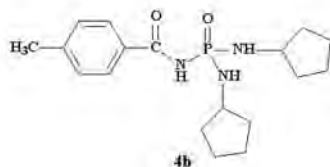
===== CHANNEL f1 =====
NUC1 13C
P1 20.20 usec
PL1 1.00 dB
SFO1 125.7715719 MHz

===== CHANNEL f2 =====
CPOPRG2 waltz16
NUC2 1H
PCPD2 80.00 usec
PL2 4.00 dB
PL12 26.00 dB
PL13 26.00 dB
SFO2 500.1320005 MHz

F2 - Processing parameters
SI 32768
SF 125.7577871 MHz
WDW EM
SSB 0
LB 1.00 Hz
GB 0
PC 1.40

1D NMR plot parameters
CX 20.00 cm
F1P 118.330 ppm
F1 15007.81 Hz
F2P 111.056 ppm
F2 13956.20 Hz
PRMCH 0.41413 ppm/cm
HZCM 52.08046 Hz/cm

ppm



8.93571

ppm 200 150 100 50 0 -50 -100 -150 -200

Current Data Parameters
 NAME mojed
 EXPNO 632
 PROCNO 1

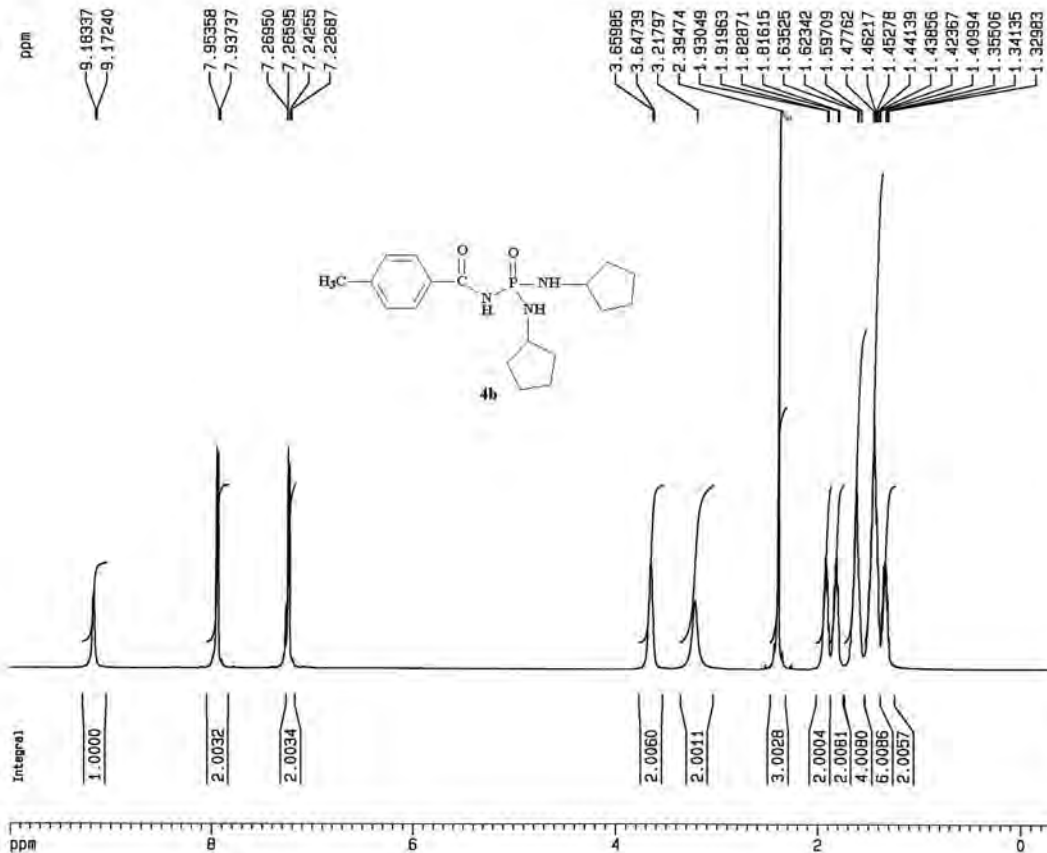
F2 - Acquisition Parameters
 Date_ 20051017
 Time 7.26
 INSTRUM spect
 PROBHD 5 mm Multinu
 PULPROG zgpg30
 TD 65536
 SOLVENT CDCl3
 NS 24
 QS 4
 SMH 100000.000 Hz
 FIDRES 1.525979 Hz
 AQ 0.3277300 sec
 RG 7298.2
 DW 5.000 usec
 DE 6.000 usec
 TE 298.0 K
 D1 2.00000000 sec
 D11 0.03000000 sec
 D12 0.00002000 sec

----- CHANNEL F1 -----
 NUC1 31P
 P1 18.00 usec
 PL1 0.00 dB
 SFO1 202.4560850 Mhz

----- CHANNEL F2 -----
 CPDPRG2 waltz16
 NUC2 1H
 PCPD2 80.00 usec
 PL2 4.00 dB
 PL12 25.00 dB
 PL13 25.00 dB
 SFO2 500.1320005 Mhz

F2 - Processing parameters
 SI 65536
 SF 202.4562634 Mhz
 NDW EH
 SSB 0
 LB 1.00 Hz
 SB 0
 PC 1.40

1D NMR plot parameters
 CX 20.00 cm
 F1P 245.987 ppm
 F1 49801.65 Hz
 F2P -247.945 ppm
 F2 -50198.32 Hz
 PPMCH 24.69688 ppm/cm
 HZCH 4999.99902 Hz/cm



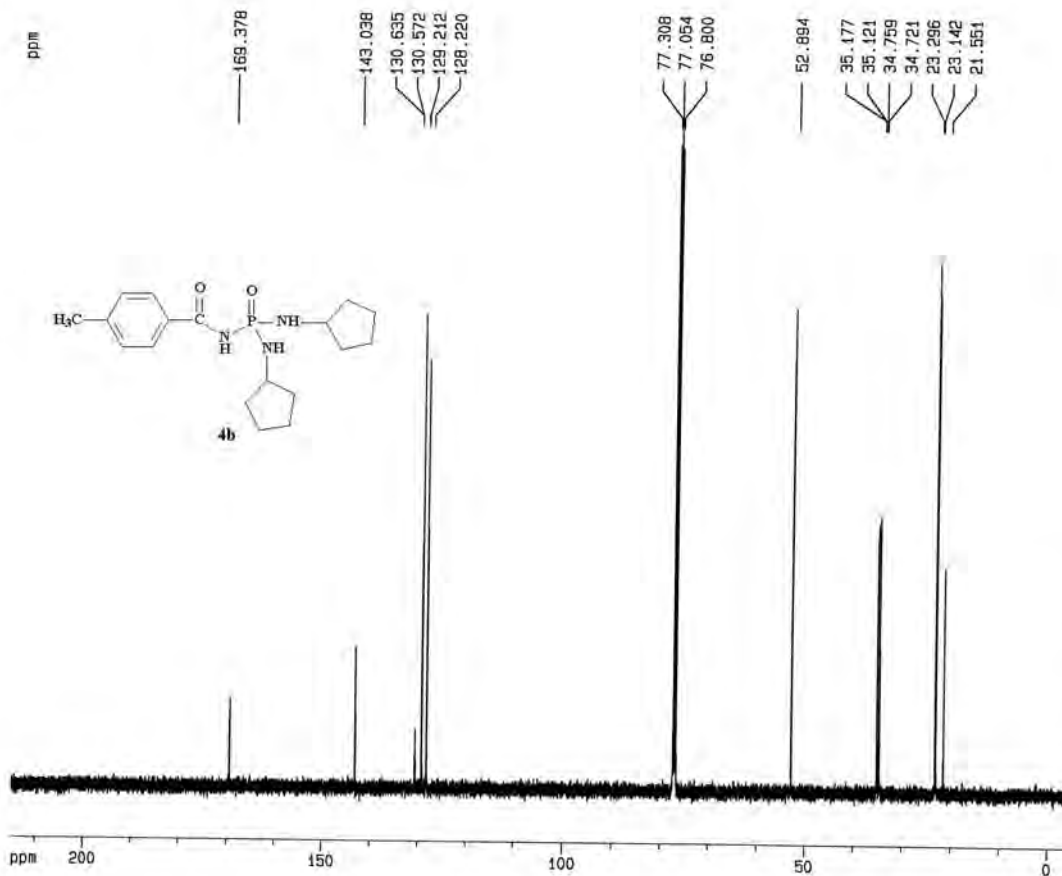
Current Data Parameters
 NAME m0jehed
 EXPNO 633
 PROCNO 1

F2 - Acquisition Parameters
 Date_ 20051017
 Time 7.30
 INSTRUM spect
 PROBHD 5 mm Multinu
 PULPROG zg
 TD 32768
 SOLVENT CDC13
 NS 8
 DS 2
 SMH 10330.578 Hz
 FIDRES 0.315264 Hz
 AQ 1.5860212 sec
 RG 28.5
 DW 48.400 usec
 DE 6.00 usec
 TE 298.0 K
 D1 6.0000000 sec

----- CHANNEL f1 -----
 NUC1 1H
 P1 10.00 usec
 PL1 3.00 dB
 SFO1 500.1345012 MHz

F2 - Processing parameters
 S1 65536
 SF 500.1300098 MHz
 MDW EM
 SSB 0
 LB 0.30 Hz
 GB 0
 PC 1.00

1D NMR plot parameters
 CX 20.00 cm
 F1P 10.000 ppm
 F1 5001.30 Hz
 F2P -0.300 ppm
 F2 -150.04 Hz
 PPMCM 0.51500 ppm/cm
 HZCM 257.56696 Hz/cm



Current Data Parameters
 NAME mojahed
 EXPNO 636
 PROCNO 1

F2 - Acquisition Parameters
 Date_ 20051017
 Time 7.38
 INSTRUM spect
 PROBHD 5 mm Multinu
 PULPRG zpgg30
 TO 65536
 SOLVENT DMSO
 NS 705
 DS 4
 SMH 31445.541 Hz
 FIDRES 0.479836 Hz
 AQ 1.0420724 sec
 RG 11585.2
 DW 15.900 usec
 DE 6.00 usec
 TE 298.0 K
 D1 2.00000000 sec
 D11 0.03000000 sec
 D12 0.00002000 sec

CHANNEL f1
 NUC1 13C
 P1 20.25 usec
 PL1 1.00 dB
 SFO1 125.7715719 MHz

CHANNEL f2
 CPDPRG2 waltz16
 NUC2 1H
 PCPD2 80.00 usec
 PL2 4.00 dB
 PL12 26.00 dB
 PL13 25.00 dB
 SFO2 500.1320005 MHz

F2 - Processing parameters
 SI 131072
 SF 125.7577964 MHz
 MDX EM
 SSB 0
 LB 1.00 Hz
 GB 0
 PC 1.40

1D NMR plot parameters
 CX 20.00 cm
 F1P 215.000 ppm
 F1 27037.92 Hz
 F2P -5.000 ppm
 F2 -628.79 Hz
 PRMCM 11.00000 ppm/cm
 HZCM 1393.33569 Hz/cm