

## Use of polyethylene glycol to improve the utilisation of leguminous leaf meals in pigs: A review

V. A Hlatini<sup>1</sup>, C. N Ncobela<sup>1,2</sup>, T. J. Zindove<sup>3</sup> & M. Chimonyo<sup>1#</sup>

<sup>1</sup> Animal and Poultry Science, School of Agricultural, Earth and Environmental Sciences, University of KwaZulu-Natal, P bag X01 Scottsville 3209, Pietermaritzburg, South Africa

<sup>2</sup> Current address: Agricultural Research Council-Animal Production Institute (Nutrition Building), Private Bag X2, Irene 0062, South Africa

<sup>3</sup> Department of Animal Science, Faculty of Agriculture and Environmental Science, Bindura University of Science Education, Private Bag 1020, Bindura, Zimbabwe

(Received 6 October 2017; Accepted 14 February 2018; First published online 6 April 2018)

Copyright resides with the authors in terms of the Creative Commons Attribution 4.0 South African Licence.  
See: <http://creativecommons.org/licenses/by/4.0/za>  
Condition of use: The user may copy, distribute, transmit and adapt the work, but must recognise the authors and the South African Journal of Animal Science.

### Abstract

The use of leguminous leaf meal as feed ingredients for pigs needs to be intensified and improved. Leguminous trees and shrubs are valuable sources of protein, amino acids, and dietary fibre for pigs. Leguminous leaf meals are abundant in the tropical regions and their use as alternate protein-rich feed ingredients for pigs is promising. In tropics, climate change and vegetation management practices have certainly increased the availability of shrub legumes compared to grasses. There is, therefore, a need to resort on harnessing abundant and cheap feed resources to cope with environmental changes and rise of feed prices. Leguminous leaf meals are invaluable feed ingredients for pigs because of their relatively high crude protein and they are highly available. The leguminous leaves also thrive in, and tolerate, adverse climatic and soil conditions. However, their utilisation is limited by presence of polyphenolic compounds, particularly condensed tannins that inhibit their efficient use by pigs. Other challenges for the utilisation of legume-based leaf meal diets are the presence of thorns and high fibre content. If leguminous leaf meals are included in the diet beyond optimum levels, polyphenolic compounds can suppress appetite, promote feed refusal, reduce digestibility, and can induce toxicity in pigs. This warrants investigation on the use of tannin-binding agents (TBA) to improve nutrient utilisation of leguminous leaf meal-containing diets fed to pigs. The inclusion level of polyethylene glycol (PEG) in livestock diets has a huge potential to neutralise negative effects of undesirable polyphenolic compounds. Therefore, the current review aimed to assess the potential of PEG to inactivate tannin and amount of PEG to include for optimum pig performance.

**Keywords:** Leguminous leaf meals, performance, pigs, polyethylene glycol, polyphenolic compounds

# Corresponding author: [chimonyo@ukzn.ac.za](mailto:chimonyo@ukzn.ac.za)

### Introduction

Pork production is on the increase due to rising demand for pork products; as a result of human population growth and it being one of the richest dietary sources of protein. The growing awareness about the health benefits of white meat is also increasing the demand for pork. Increase in pork production has resulted in increased demand for feed concentrates. This has resulted in a rising demand for cereal grains for feed. The pig industry uses nearly one-third of the global cereal harvest (Steinfeld & Opio, 2010). The increased demand for cereal grains for feed, coupled with competition from human consumption, puts pressure on the production of conventional legumes, such as soybeans. Consequently, costs of cereal grains for food and feed are high. As a result, the use of conventional protein sources is disadvantageous because they are expensive. Thus, the use of non-conventional protein-rich feed ingredients for feeding pigs has been gaining ground (Khanyile *et al.*, 2014; Mlambo *et al.*, 2015). This eases pressure on grain legumes and animal protein sources. The use of leguminous leaves also expands the spectrum of feed resources available for pigs. Many leguminous trees have shown potential to be suitable alternative feedstuffs that can

be used in pig rations as protein sources. These species include *Vachellia* species viz. *karroo*, *tortilis*, *nilotica*, *angustissima* and *nigrescens*, *Leucaena leucocephala*, *Calliandra calothyrsus*, *Gliricidia sepium*, *Leucaena diversifolia*, *Leucaena pallida*, *Sechium edule*, *Psophocarpus scandens*, *Vigna unguiculata*, *Sesbania sesban*, *Entada abyssinica* and *Tephrosia bracteolata* (Halimani *et al.*, 2007; Mapiye *et al.*, 2011; Bhat *et al.*, 2013; Khanyile *et al.*, 2014; Woyengo *et al.*, 2014). Leguminous leaves have high levels of proteins, amino acids, minerals, vitamins, dietary fibre, energy, lipids, and carotenoids, and possess antimicrobial and antioxidant properties, which are essential in pig production efficiency (Halimani *et al.*, 2005; Khanyile *et al.*, 2014; Mlambo *et al.*, 2015). The high crude protein content found in these species could be of benefit to pig nutritionists to ensure least cost formulation of diets with the aim to replace commercial protein sources such as soybean in pig diets.

In addition to their having high protein and mineral contents (Barakat *et al.*, 2013; Woyengo *et al.*, 2014), leguminous trees and shrubs are potential alternative livestock feeds because of their abundance and reliance. Legumes have been the most important encroaching plant species that suppresses the palatability of grass in Southern Africa (Munyati *et al.*, 2013). They contain high crude protein (CP) content ranging from 103 - 306 g/kg DM, amino acid contents, as well as favourable mineral concentration such as calcium (0.4 - 0.39%), magnesium (0.13 - 0.137%), and potassium (0.41 - 0.35%) (Halimani *et al.*, 2007; Gebeyew *et al.*, 2015; Kambashi *et al.*, 2016). One of the major drawbacks to the use of leguminous leaf meals as protein sources in animal diets is the presence of anti-nutritive factors. The physical and chemical properties of the leguminous meals vary with their species. Khanyile *et al.* (2014) characterized the nutritional and physical composition of *Vachellia* species and found that *Vachellia tortilis* has higher CP content, low water holding capacity, moderate levels of capacity of swell and reasonable condensed tannins compared to *V. robusta*, *V. xanthophloeoe*, and *V. nigrescens* (Khanyile *et al.*, 2014). Condensed tannins are the major anti-nutritional factor found in the leguminous leaf meals. Condensed tannins inhibit digestion in pigs by binding to proteins in the leguminous meals and, thus, making them difficult to digest. The condensed tannins also interfere with protein absorption and digestive enzymes. It is important to devise cost-effective feeding strategies for leguminous leaf meals to intensify production of leguminous leaves (Mapiye *et al.*, 2011). To enhance digestibility, utilisation, and absorption of nutrients in leguminous leaf meals, there is a need to explore the benefits of incorporating exogenous tannin-binding agents in the diets. Common tannin-binding agents include polyethylene glycol (PEG) and polyvinyl pyrrolidone (PVP). The PEG has been reported to be more effective than PVP in reducing the detrimental effects of polyphenolic compounds in sheep (Ghandour *et al.* 2014) and broilers (Mansoori & Acamovic 2007). In goats, PEG does not affect digestion processes and growth performance (Motubatse *et al.* 2008; Mantz *et al.* 2009). There is no collective information on the impact of PEG on the performance of pigs. The current review assesses the potential and extent to which PEG could be included in the diet to improve the utilisation of high tannin diets by pigs.

### Indigenous legume plants in Southern Africa

Legume trees are widely dispersed throughout the savannah and dry zones of Africa and are indigenous to semi-arid regions of Africa and Middle East (Wahbi *et al.*, 2013). In Africa, at least 75% of the trees and shrubs are leguminous (Abule *et al.*, 2007). The composition and distribution of indigenous fodder trees and shrubs vary according to place of origin and natural environmental conditions where they grow naturally. Ward *et al.* (2014) reported that high availability of woody vegetation is associated with increasing ambient temperatures. The leguminous species are widely distributed and dominant throughout Southern Africa in diverse habitats. Table 1 shows the dominant legume and main encroaching species in Southern Africa. The availability and domination of these leguminous leaves vary with location (Table 1).

These Southern African trees and shrubs are causing bush encroachment that negatively affects the grazing capacity including veld condition leading to reduced forage for grazers. The legume leaves have not been fully exploited as a protein source in pig diets due to anti-nutritional factors. Generally, legume tree leaves contain high amounts of condensed tannins and fibre content. The nutrient composition of legume trees varies with species, soil condition, season, and stage of leaf growth (Nyamukanza & Scogings, 2008), harvesting and post-harvesting techniques and/or conditions. Earlier reports revealed that leguminous leaf meals are a good source of protein for pigs (Halimani *et al.*, 2005; Khanyile *et al.*, 2014; Ndou *et al.*, 2015; Kambashi *et al.*, 2016). Knowledge on chemical composition and physical properties of leguminous leaf meals is relevant in designing formulation strategies to ensure that anti-nutritional factors do not constrain pig performance. Tables 2 and 3 illustrate the physicochemical and amino acid composition of some selected common legumes in the tropics.

**Table 1** Distribution of species across selected countries in Southern Africa

Country	Dominant/Encroaching species
Tanzania	<i>Vachellia tortilis</i> , <i>Cappeins tomentosa</i>
Namibia	<i>Sengelia mellifera</i> , <i>Sengelia. erubscen</i> , <i>Vachellia tortilis</i> , <i>Dichrostachys cinerea</i>
Swaziland	<i>Dichrostachys cinerea</i>
Botswana	<i>Vachellia tortilis</i> , <i>Sengelia erbubsen</i> , <i>Vachellia fleckii</i> , <i>Salvia mellifera</i> , <i>Dichrostachys cinerea</i> , <i>Grewia flawa</i> , <i>Terminalia sericea</i> , <i>Arisaema erubscens</i>
Zimbabwe	<i>Vachellia borleae</i> , <i>Vachellia karroo</i> , <i>Colophospermum mopane</i> , <i>Vachellia nilotica</i>
South Africa	<i>Colophospermum mopane</i> , <i>Vachellia tortilis</i> , <i>Vachellia nilotica</i> , <i>Sengelia mellifera</i> , <i>Vachellia karroo</i> , <i>Dichrostachys cinerea</i> , <i>Vachellia ataxacantha</i> , <i>Scutia myrtina</i> , <i>Euclea crispa</i> , <i>Ataxacantha sieberiana</i>

Source: O'Connor *et al.* (2014)

### Role of legume trees in livestock production

Legume trees constitute leaves that are used as protein-rich feed ingredients and partly fibre for cattle, sheep, and goats. They are also appreciated as a source of amino acid and desirable tannins. Mueller-Harvey (2006) reported that tannins found in feeds such as fodder, legumes, browse leaves, fruits and *Vachellia* species could improve animal welfare as an anthelmintic. Proanthocyanidins may have direct effects on gastrointestinal parasites by reducing the number of eggs hatching, reducing the rate of larval development and decreasing the mobility of larvae (Min & Hart, 2003). Leguminous species are widely distributed and abundant, making it an ideal ingredient in pig feeds. Some ruminants can counter the protein binding effects of tannins by releasing condensed tannins binding salivary proteins (Naumann *et al.*, 2017).

### Challenges associated with utilisation of leguminous trees

Despite high nutritional composition of leguminous tree leaves, their utilisation in livestock feeding is hampered by high dietary fibre content and polyphenolics, such as tannins. Some of the leguminous trees have thorns as a defense mechanism against herbivores (Mapiye *et al.*, 2011). The density and longevity of thorns are the factors that affect the intake of thorned leguminous trees species. In pig production, the removal of thorns promotes feed consumption (Woyengo *et al.*, 2014).

Thorns can be removed by cutting the small branches and sun-air-drying them for 2 - 4 days, prior to collecting only leaves that are shaken off the branches and used in pig feeding. However, there is a need to develop machinery to replace the use of hands if utilization is to be done at commercial level. The high dietary fibre content is also known to affect the maximum utilisation of leguminous leaves (Khanyile *et al.*, 2015; Ndou *et al.*, 2015a). The high fibre content tends to affect feed intake, the digestibility of organic matter and the net energy in feed. The chemical composition and structure of plants differ with fibre source. The extent of fibre digestibility depends predominantly on the source of fibre and to a lesser extent on amount of fibre in the diet (Philips *et al.*, 2008). Undesired levels of fibre content can be suppressed by ensiling legume species and use of enzyme inoculants to hydrolyze dietary fibre. Commercial pig breeds can consume up to 4 % dietary fibre in the diet (which promotes peristalsis) without affecting voluntary feed intake (Marten *et al.*, 2013).

Although legume trees have high CP contents, they also possess natural-occurring polyphenolic compounds (Rubanza *et al.*, 2006; Mlambo *et al.*, 2015). Polyphenolic compounds have a molecular weight greater than 500 and have the ability to bind and precipitate protein (Makkar, 2003; Tufarelli *et al.*, 2017). The binding strength of tannins-protein complexes is 151 determined by the molecular weight, tertiary structure, isoelectric point, and compatibility of binding sites (Silanikove *et al.*, 2001). Polyphenolic compounds are found in almost any part of the plant and in different plant tissues. They are present in the seed, roots, stem, leaf and bud and are associated with defense role against disease, microbial infestation and predation. Some of polyphenols may reduce nutrient intake and digestibility by shielding nutrients (Ashok & Upadhyaya, 2012).

Polyphenolics are divided into hydrolysable and condensed forms (Figure 1). A central carbohydrate core containing various phenolic carboxylic acids such as gallic acid, ellagic acid and hexahydroxydihydroxy acid (Ashok & Upadhyaya, 2012) characterizes hydrolysable polyphenolics. Acids, alkali or some enzymes easily hydrolyse these polyphenolics. Hydrolysable phenolics are present in cereals and/or legumes. As a result, they are associated with positive impact on animal nutrition (Benrick, 2002). When these polyphenolics are hydrolysed, gallic or epigallic and sugar are formed. On the other hand, condensed

**Table 2** Chemical composition of selected common legumes (g/kg DM)

	DM	CP	CF	NDF	ADF	EE	Ash	NDinsolN	ADinsolN	CT	WHC	SC	AD lignin
<i>Non-conventional legumes</i>													
<i>V. nilotica</i>	947	198	-	399	227	32.7	56.5	399	227	67.7	6.44	4.57	-
<i>V. karroo</i>	922	154	119	450	300	-	110	-	-	31.3	-	-	-
<i>V. tortilis</i>	944	218	-	494	298	40.1	65.0	494	298	51.5	6.06	4.78	-
<i>V. nigrescens</i>	938	178	-	630	477	30.0	78.3	630	477	40.5	6.44	5.68	-
<i>V. angustissima</i>	918	221	-	354	171	56.5	37.5	18.4	8.7	24.4	-	-	-
<i>L. leucocephala</i>	909	291	89.0	349	214	48.0	120	14.6	6	-	-	-	-
<i>S. sesban</i>	-	306	169	170	117	53.0	-	-	-	-	-	-	-
<i>C. mopane</i>	-	140	190	-	-	-	-	-	-	-	-	-	-
<i>M. olifera</i>	860	268	157	200.8	137.9	56.3	108	-	-	7.7	-	-	-
<i>P. scandens</i>	201	104	-	473	316	-	-	-	-	-	-	-	70
<i>S. guianensis</i>	216	103	-	507	347	-	-	-	-	-	-	-	65
<i>V. unguiculata</i>	156	162	-	359	252	-	-	-	-	-	-	-	51
<i>Conventional protein sources</i>													
Soybean meal	900	450	50.0	-	-	90.0	60.0	-	-	-	-	-	-
Sunflower meal	930	455	117	356	344	160	200	-	-	-	-	-	-

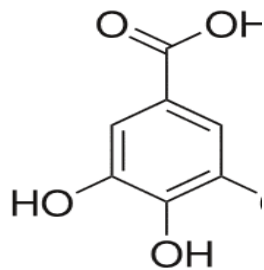
Source: Piva (1992); Ravindran and Blair (1992); Halimani *et al.* (2005); Khanyile *et al.* (2014); Mukumbo *et al.* (2014); Kambashi *et al.* (2016).

DM: Dry matter, CP: Crude protein, CF: crude fibre, NDF: Neutral detergent fibre, ADF: Acid detergent fiber, EE: Ether extract, CT: Condensed tannins, WHC: Water holding capacity, SC: Swelling capacity, AD lignin: Acid detergent lignin, NDinsolN: Neutral detergent insoluble nitrogen, ADinsolN: Acid detergent insoluble nitrogen

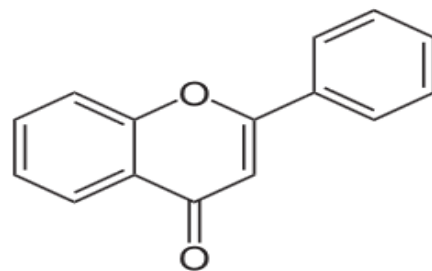
**Table 3** The amino acid content of some of the selected common legumes (g/kg DM)

Variable	Threonine	Glycine	Valine	Cysteine	Methionine	Isoleucine	Tyrosine	Phenylalanine	Lysine	Histidine
<i>Non-conventional legumes</i>										
<i>V. nilotica</i>	6.2	6.8	7.3	4.4	2.6	5.6	5.3	6.8	8.4	2.8
<i>V. karroo</i>	5.0	5.5	5.9	3.2	1.9	4.3	3.8	5.4	6.6	2.3
<i>L. leucocephala</i>	12	13	14	2.0	4.6	14	13	15	18	5.4
<i>G. sepium</i>	12	-	16	3.9	4.2	12	11	15	11	5.1
<i>S. sesban</i>	9.9	10	11	0.5	3.7	9.2	6.9	11	13	4.4
<i>C. mopane</i>	5.5	5.9	6.9	3.9	2.4	5.1	4.2	6.4	7.3	2.5
<i>M. olifera</i>	-	-	-	-	4.0	-	-	-	7.5	-
<i>P. scandens</i>	10	14	-	-	3.5	8.8	5.0	9.4	9.4	4.3
<i>S. guianensis</i>	8.5	13	-	-	3.2	7.8	4.6	8.8	8.1	3.8
<i>V. unguiculata</i>	11	17	-	-	4.2	10	5.5	11	9.7	4.4
<i>Conventional protein sources</i>										
Soybean meal	4.0	4.5	5.5	1.0	1.4	1.5	4.2	4.9	6.8	3.0
Sunflower meal	16	-	14	-	6.2	13	-	13	11	9.6

Source: Piva (1992); Ravindran & Blair (1992); Halimani *et al.* (2005); Khanyile *et al.* (2014); Mukumbo *et al.* (2014); Kambashi *et al.* (2016)



Gallic acid  
Hydrolysable polyphenolic



Flavone  
Condensed polyphenolic

**Figure 1** Structure of condensed and hydrolysable polyphenolics

Source: Ashok & Upadhayaya (2012)

polyphenolics are dimers or oligomers of catechin, epicatechin or similar units (Ashok & Upadhayaya, 2012). The structure of these units is joined by carbon-carbon bonds, which can be broken by hydrolysis (Kambashi *et al.* 2014). Mokoboki *et al.* (2005) defined condensed tannins as polymers of flavonol units most frequently linked at carbon (C) 4 - C8 or C4 - C6. Condensed polyphenolics have been identified as a major nutritional factor affecting productivity of pigs fed leaf meals from legume trees and shrubs. The most common condensed polyphenolic found in leguminous leaves is tannins (Ashok & Upadhayaya. 2012). *Vachellia* species contain high amounts of polyphenolic compounds, there is a need to develop strategies to ameliorate their effects on pig performance if the species is to be used as a protein source in pig diets.

### Performance of pigs fed on leguminous leaf meals

The performance of pigs offered different leaf meal-based diets is shown in Table 4. The response of pigs to incorporation of leguminous leaf meal cannot be generalised because it depends on different characteristics of chemical composition and physical properties of leaf meal including the ratio of the different components in the overall diet

**Table 4** Performance of pigs fed leguminous species

Legume Species	Inclusion level (g/kg DM)	Growth performance			
		ADFI (kg/d)	ADG (kg /d)	FCR	G:F ratio
<i>Vachellia tortilis</i>	50	3.08	0.860	-	0.368
<i>Vachellia tortilis</i>	100	2.78	0.853	-	0.341
<i>Vachellia tortilis</i>	150	3.02	0.559	-	0.329
<i>Vachellia tortilis</i>	200	2.35	0.442	-	0.308
<i>Vachellia tortilis</i>	250	2.03	0.387	-	0.324
<i>Leucaena leucocephala</i>	200	1.79	603	2.52	-
<i>Moringa Oliefera</i>	25	3.1	0.9	3.4	-
<i>Moringa Oliefera</i>	50	3.1	1.0	3.2	-
<i>Moringa Oliefera</i>	75	3.6	0.9	3.9	-
<i>Sechium edule</i>	400	96.07	1.8	5.74	-
<i>Vachellia karroo</i>	100	2.62	1080.4 g/day	2.4	-
<i>Colophospermum mopane</i>	100	2.37	1003.6 g/day	2.4	-
<i>Vachellia nilotica</i>	100	2.47	987.5 g/day	2.5	-
<i>Psophocarpus scandens</i>	321 g/day	1.88	515 g/day	3.66	-
<i>Stylosanthes guianensis</i>	232 g/day	1.98	543 g/day	3.67	-
<i>Vigna unguiculata</i>	214 g/day	1.89	537 g/day	3.55	-

Source: Halimani *et al.* (2005); Khanyile *et al.* (2014); Mukumbo *et al.* (2014); Lalthansanga and Samanta (2015); Kambashi *et al.* (2016).

ADFI: average daily feed intake (kg/d DM); ADG: average daily gain (g BW/d); BW: body weight; G: F ratio: gain: feed ratio; FCR: Feed conversion ratio

The variation in average daily feed intake (ADFI), average daily gain (ADG), feed conversion ratio (FCR) and gain: ratio (G\F) could be due to different leguminous species, stage of harvesting, harvesting method and pig genotypes used (Table 4). Maximum utilisation of leaf meals is limited because of the presence of polyphenolic compounds, which plays a major role in reduction in intake, reduced digestibility and lower efficiency (Bhat *et al.*, 2013; Kambashi *et al.*, 2016). The low FCR is driven by bitter and astringent taste from tannins.

Khanyile *et al.* (2014) reported that the maximum average daily feed intake and average daily gain were reached at  $125 \pm 19.4$  and  $137 \pm 12.1$  g/kg DM of *V. tortilis* inclusion level, respectively. At high inclusion level (137 g/kg DM), leaf meal tends to negatively affect mucosal lining of the digestive tract (Table 4). High tannins bind protein, which in turn, causes reduction of protein digestibility and carbohydrates together with starch and fibers (Martens *et al.*, 2013). The low intake and ADG has been attributed to the

presence polyphenolics such as tannins in *V. tortilis*. It is, therefore, of interest to investigate the possible ways to neutralise undesired polyphenolics found in legume tree leaves.

### Physiological adaptation of pigs to leguminous leaf meals

Polyphenolics such as tannins may reduce intake of forage legumes by decreasing palatability or by negatively reducing digestibility of nutrients (Barry *et al.*, 1999). Astringency is the sensation caused by the formation of complexes between tannins and salivary glycoprotein. Astringency may increase salivation and reduce palatability (Makkar, 2003). Tannins have a number of detrimental biological effects (Mlambo *et al.*, 2015). These effects include interference with pig growth, digestibility and metabolism (Yan & Bennick, 1995). Pigs produce very limited tannin-binding salivary proline-rich protein and histatins as a coping mechanism that protect them from negative nutritional and health effects. Nonetheless, a retarded growth performance of pigs when fed high levels of leguminous leaves has been reported (Halimani *et al.*, 2005; Khanyile *et al.*, 2014). In addition, pigs have a limited ability to utilise tannin-rich feedstuff due to their physiological nature. It is because, unlike ruminants, they do not have bacteria, which counter the effects of tannins. To maximise the use of leguminous leaf meals as feedstuff for pigs, it is fundamental to develop strategies to improve their utilisation such as introduction of polyphenolic-binding agents.

### Inactivating polyphenolic -protein complexes

Different methods have been used to inactivate detrimental and toxic effects of tannins to improve their nutritive value of feedstuffs. These methods include the use of binding agents (polyethylene glycol, polyvinylpyrrolidone, polyvinyl polypyrrolidone, acetic acid, and sodium hydroxide), heating, soaking in water and drying, wood ash, chopping and storage, urea, solid-state fermentation and use of enzymes (Bhat *et al.*, 2013; Hlatini *et al.*, 2016). The methods are commonly grouped into physical and chemical methods.

Common methods of physical treatments do not seem to be economically viable and are less effective due to intensive labour requirements and being time consuming. However, chopping of fresh leaves, water soaking, and then storage is a practical and economical method for smallholder farmers (Bhat *et al.*, 2013). Several chemical methods have been evaluated (Kyarisiima *et al.*, 2004; Ben Salem, 2005a; Ben Salem, 2005b). Chemical methods are associated with loss of nutrients and are expensive to resource-limited farmers. Use of tannin-binding agents such as PEG are gaining intrigue due to their effectiveness in binding with tannins. Polyethylene glycol has been identified as the most effective way of detoxifying legume tree leaves.

### Performance of pigs fed leguminous leaf meal treated with polyethylene glycol

Polyethylene glycol is a non-nutritive synthetic polymer, an oligomer or polymer of ethylene oxide with a molecular mass below 20,000 g/mol (Makkar, 2003). Polyethylene glycols of different molecular weight are available commercially, and their molecular weight ranges from as little as 200 upwards. The chemical formula for PEG is  $(C_2H_4O)_n + 1 H_2O$  (Henning, 2002) where "n" represents the average number of oxethylene groups, and below 55 °C it is a free-flowing white powder freely soluble in water. The PEG with higher molecular weight are available as free-flowing white powder (1500 and 4000) and creamy with flakes for the range 4000 to 8000 (Table 5) and is preferred to others, because of its ability to bind tannins at near neutral pH. The PEG is a good binder of protein than PVP for pH 3 to 7.

Polyethylene glycol has the ability to dissolve many substances and the higher molecular weight of PEG is capable to solubilize water insoluble compounds (Kambashi *et al.*, 2014). The most important physical property of PEG is its solubility in water, making it ideal for inclusion in leaf meals (Ben Salem *et al.*, 2005b). Salem *et al.* (2000) reported that PEG has been used for fractional precipitation of properties. It is usually used as a substance to make proteins from ingested tannin containing feed to be available for utilisation by livestock. There is little information on the use of tannin-binding agent such as polyethylene glycol to overcome problems associated with reduced feed nutrient value, toxic effect and utilisation on pigs fed *Vachellia* leaf meal diets.

Hlatini *et al.* (2016) suggested that PEG with molecular weight of 4,000 is effective in preventing the binding of polyphenolics and protein from *V. tortilis* leaves. A minimum of 1.8 g PEG can completely reverse the binding effect of 1 g of tannins (Barry & Foss, 1983). Makkar *et al.* (1995) suggested that strong binding of PEG with polyphenolics could also decrease the recovery of the PEG in faeces when PEG is incorporated into the tannin-rich feed to alleviate the adverse effects of tannins. The effect of tannins on eating activity of pigs, and interactions with PEG supplementation has not been reported. Oduguwa *et al.* (2007) reported that PEG (1g and 10 g /kg DM + 30 g of malted sorghum with 140 g/kg polyphenolics) did not improve on the apparent amino acid digestibility and true amino acid digestibility. This could be associated with polyphenolic bound to PEG or other components such as fibre. On the other hand, Mansoori & Acamovic (2009)

determined that PEG improved protein digestibility, utilisation and reduced negative effect of tannins in the gastrointestinal tract of birds fed on high tannins feeds. Hlatini *et al.* (2016) reported an increase in average daily gain as the PEG inclusion level increased in *V. tortilis* based-diets.

**Table 5** Mean  $\pm$  standard error of binding (measured as turbidity at 500 nm) of polyethyleneglycols (PEG) of different molecular weights with tannins at pH 6, 6\*

	TA		QT		Ab		Dc		Pr		Gs	
PEG 2000	0.520	0.006	0.293	0.003	0.399	0.006	0.451	0.006	0.120	0.001	0.267	0.002
PEG 4000	0.610	0.005	0.314	0.005	0.496	0.004	0.552	0.005	0.225	0.005	0.345	0.001
PEG 600	0.605	0.004	0.293	0.009	0.501	0.010	0.528	0.006	0.234	0.007	0.340	0.004
PEG 10000	0.592	0.002	0.290	0.004	0.525	0.005	0.560	0.005	0.240	0.005	0.328	0.008
PEG 20000	0.613	0.005	0.303	0.002	0.558	0.004	0.532	0.006	0.225	0.004	0.358	0.005
PEG 35000	0.600	0.005	0.287	0.010	0.542	0.010	0.501	0.005	0.242	0.002	0.339	0.010
PEG compound	0.632	0.004	0.310	0.005	0.513	0.005	0.578	0.006	0.258	0.002	0.352	0.006

Source: Makkar *et al.* (1995)

TA: tannic acid; QT: quebracho (*Aspidosperma quebracho*) tannins; Ab: *Acioa barteri*; Dc: *Dichostachys cinerea*; Pr: *Piliostigma reticulatum*; Gs: *Guiera senegalensis*.

\*The assay used 100 ml tannin solution (2 mg/ml) and 50  $\mu$ l PEG (0.5 mg/ml).

The PEG also increases the palatability of high polyphenolic forages thereby increasing their intake (Nsahlai *et al.*, 2011; Ghandour *et al.*, 2014). Yu *et al.* (1995) added PEG at a rate of 2 mg/g total condensed tannins to make most of protein available for utilisation. Detrimental effect in nutrition caused by polyphenolic compounds may not be completely reversed by application of PEG. However, the presence of PEG may increase astringency and appetite when low-tannin alternatives offer fewer nutrients than the high-tannin forage (Phengsavanh, 2013; Ghandour *et al.*, 2014).

The information on effects of PEG supplementation on the performance of pigs fed leaf meal-containing diets is scarcely documented. Rowan & Lawrence (1986) studied growth, tissue deposition, and metabolism from growing pigs fed on rapeseed meal treated with different levels of PEG and copper, and they determined that PEG at 17 g/kg DM significantly improved growth rate. Savage *et al.* (1980) reported the positive influence of micronization and polyethylene glycol on the nutritional value of brown sorghum for growing pigs.

Metabolites are undoubtedly the best practical predictor and it could be useful in preventing metabolic shortages together with damages in the animal (Ndou *et al.*, 2015a). Hlatini & Chimonyo (2016) reported that as the PEG inclusion level increased, albumin concentration increased at an increasing rate and had no effect on cholesterol, creatinine and uric acid concentrations to pigs fed on tannin-rich diet. Authors further observed a linear relationship between PEG inclusion level and globulin. Changes in the constituent compounds of blood when compared to normal values could be used to determine metabolic state together with feed quality. Moreover, blood biochemistry and body condition of pigs could help to predict status of energy, protein, glucose and early sign of metabolic disorders (Lim *et al.*, 2013; Ndou *et al.*, 2015a).

Serum protein, iron, and cholesterol are vital when identifying the nutrients profile of animals (Ndlovu *et al.*, 2009). The acceptable levels of blood cholesterol indicate the health and safety of the leaf meal on pigs (Washington & Van Hoosier, 2012). Blood cholesterol concentration could be reduced by the presence of polyphenolics in pig diets (Jansman, 1993), though no significant change was observed by Hlatini & Chimonyo (2016). Reduction in iron and copper bioavailability was observed in pigs given polyphenolic rich feeds (Bravo *et al.*, 2008). Khanyile *et al.* (2014) observed that *Vachellia tortilis* leaf meal diet did not influence the serum phosphorus and total protein concentration. There is little information concerning the effect of PEG treated leaf meal on blood metabolites from growing pigs. Moreover, there are few challenges of treating leaf meals with PEG compared to other methods.

There is a need to determine effect of PEG treated leaf meal on blood lipid profiles that may be of interest to pig nutritionists. Environmental contamination with nitrogen-containing products in manure is a topical issue in the tropics. Hlatini *et al.* (2017) reported that increasing levels of PEG resulted to an increase



in serum iron concentration until it reached a plateau then it started to decrease. The Authors also observed a linear increase in nitrogen utilisation and retention with PEG inclusion.

The PEG may be utilized in different ways such as spraying leaves, oral dosage and mixed with diet (Ben Salem *et al.*, 2000). Application of PEG by spraying the standing plants prior to utilisation requires a lot of labour and its time consuming, while mixing with diets is preferred. Oral dosage may include a slower onset of action, irritating and stressing to animals (Turner *et al.*, 2011). Otherwise, spraying and oral dosage both requires a moderate technical skill accompanied with confidence. The use of PEG needs to be performed accurately, rapidly, and humanely in animals (Bhat *et al.*, 2013). Application of PEG has been recommended however, the methods are either uneconomical and/or impractical under farmer management. There is little on the literature concerning the supplementation of PEG on leaf meal diets of pigs.

### Concluding remarks and further research

Polyphenolic-containing feed sources such as trees and shrubs foliage and agro-industrial by-products could be used to partially replace expensive commercial protein sources, because humans do not directly consume them. Leguminous leaves could be used as an alternative source to provide protein for pigs. However, these feed resources contain anti-nutritive factors that reduce their utilisation. Therefore, the response of pigs to low and moderate levels of polyethylene glycol on growth and metabolism needs to be explored. The use of PEG may assist in increasing protein and amino acid supply to meet nutrient requirements of animals. Mechanisms by which the PEG ameliorates the effects of in-feed tannins in different classes of livestock and how this is manifested in different gut segments need to be established. There is also the necessity to determine the digestibility and nitrogen balance of *Vachellia* leaf meal treated with graded levels of PEG in pigs. Due to anti-nutritive factors in leaf meals, pigs do not maximize utilization of leguminous leaves. This calls for research in optimizing the intake of protein through application of PEG. It is crucial to investigate the optimum inclusion level of PEG for performance of growing pigs and appraise the effect of PEG treated leaf meals on carcass characteristics and pork quality.

### Acknowledgements

This review is part of the project that funded by National Research Foundation (102702) and competitive grant from University of KwaZulu Natal.

### Authors' contributions

VAH did the layout and writing of first draft of the manuscript. CNC, TJZ and MC edited the layout and content of the manuscript.

### Conflicts of Interest Declaration

There is no conflict of interest among the authors and funders of the project.

### References

- Abdulrazak, S.A., Orden, E. A., Ichinohe, T. & Fujihara, T., 2000. Chemical composition, phenolic concentration and *In vitro* gas production characteristics of selected *Acacia* fruits and leaves. J. Anim. Sci. 7, 935-940.
- Abule, E., Snyman, H.A. & Smit, G. N., 2007. Rangeland evaluation in the middle: A wash valley of Ethiopia: II. Woody vegetation. J. Arid. Environ. 70, 272-292.
- Ashok, P.K. & Upadhyaya, K., 2012. Tannins are astringent. Anim. Feed Sci. Technol. 106, 3-19.
- Barakat, N. A., Laudadio, V., Cazzato, E. & Tufarelli, V., 2013. Potential contribution of *Retama raetam* (Forssk.) Webb & Berthel as a forage shrub in Sinai, Egypt. Arid. Land. Res. Manag. 27, 257-271.
- Barry, T. N., McNabb, W. C., 1999. The implications of condensed tannins on the nutritive value of temperate forages fed to ruminants. Br. J. Nutr. 81, 263-272.
- Barry, T.N. & Forss, D.A., 1983. The condensed tannin content of vegetative lotus pedunculatus, its regulation by fertiliser application, and effect upon protein solubility. J. Sci. Food Agric. 34, 1047-1056.
- Ben Salem, H., Makkar, H.P.S., Nefzaoui, A., Hassayoun, L. & Abidi, S., 2005a. Benefit from the association of small amounts of tanninrich shrub foliage (*Acacia cyanophylla* Lindl.) with soya bean meal given as supplements to Barbarine sheep fed on oaten hay. Anim. Feed Sci. Technol. 122, 173-186.
- Ben Salem, H., Nefzaoui, A., Ben Salem, L. & Tisserand, L.J., 2000. Deactivation of condensed tannins in *Acacia cyanophylla* Lindl. foliage by polyethylene glycol in feed blocks: Effect on feed intake, diet digestibility, nitrogen balance, microbial synthesis and growth by sheep. Livest. Prod. Sci. 64, 51-60.
- Ben Salem, H., Saghrouni, L. & Nefzaoui, A., 2005b. Attempts to deactivate tannins in fodder shrubs with physical and chemical treatments. Anim. Feed Sci. Technol. 122, 109-121.
- Besharati, M. & Taghizadeh, A., 2011. Effect of tannin-binding agents (polyethylene glycol and polyvinylpyrrolidone) supplementation on *In Vitro* gas production kinetics of some grape yield byproducts. Vet. Sci, 2011.
- Bhat, K.T., Kannan, A., Singh, B. & Sharma, P.O., 2013. Value addition of feed and fodder by alleviating the anti-nutritional effects of tannins. Agric. Res. 3, 189-206.

- Dube, J.S., Reed, J.D. & Ndlovu, L.R., 2001. Proanthocyanidins and related phenolics in *Acacia* leaves of Southern Africa. *Anim. Feed Sci. Technol.* 91, 59-67.
- Ferraz de Oliveira, M.I., Cancela d'Abreu, M. & Freitas, A., 2008. The effect of polyethylene glycol (PEG) on protein output of free range Alentejano pigs. Proceedings of the 6<sup>th</sup> international symposium Mediterranean pig, Capo d'Orlando, Messina.
- Food & Agriculture Organization of the United Nations (FAO), 1993. Indigenous multipurpose trees of Tanzania: uses and economic benefits for people. Rome.
- Ghandour, M.M.A., Fayed, A.M., Abdul-Aziz, G.M. & Hanafy, M.A., 2014. Effect of using polyethylene glycol or sodium bentonite on performance of sheep fed *Acacia saligna*. *World. Appl. Sci. J.* 32, 2309-2316.
- Halimani, T.E., Dzama, K., Chimonyo, M. & Bhebhe, E., 2005b. Use of leguminous leaf meals in smallholder pig production in Zimbabwe. *African Crop Science Conference Proceedings*, 7, 579-582.
- Halimani, T.E., Ndlovu, L.R., Dzama, K., Chimonyo, M. & Miller, B.G., 2007. Metabolic response of pigs supplemented with incremental levels of leguminous *Acacia karroo*, *Acacia nilotica* and *Colophospermum mopane* leaf meals. *Livest. Res. Rural. Dev.* 19,187.
- Halimani, T.E., Ndlovu, L.R., Dzama, K., Chimonyo, M., Miller, B.G., 2005a. Growth performance of pigs fed on diets containing *Acacia karroo*, *Acacia nilotica* and *Colophospermum mopane* leaf meals. *Anim. Sci.* 81, 39-45.
- Heuze, V., Tran, G., 2011. Umbrella thorn (*Acacia tortilis*). Feedipedia.org. A project by INRA, CIRAD, AFZ and FAO. [http://. http://dx.doi.org/10.1590/S1517-83822012000100010](http://dx.doi.org/10.1590/S1517-83822012000100010).
- Hlatini, V. A. & Chimonyo, M., 2016. Nutritionally-related blood metabolites and liver enzymes in growing pigs fed on *Acacia tortilis* treated with polyethylene glycol. *Livest. Sci.* 187, 158-161.
- Hlatini, V. A., Khanyile, M., Zindove, T. & Chimonyo, M., 2016. Feed intake and growth performance of growing pigs fed on *Acacia tortilis* leaf meal treated with polyethylene glycol. *Trop. Anim. Health. Prod.* 48, 585-591.
- Hlatini, V. A., Zindove, T. J. & Chimonyo, M., 2017. The influence of polyethylene glycol inclusion in *Vachellia tortilis* leaf meal on nitrogen balance in growing pigs. *S. Afr. J. Anim. Sci.* 47, 298-306.
- Jansman, A.J.M., 1993. Tannins in faba beans (*Vicia faba* L.) – anti-nutritional properties in monogastric animals. PhD. Thesis, Wageningen (the Netherlands).
- Kambashi, B., Kalala, G., Dochain, D., Mafwila, J., Rollin, X., Boudry, C., Picron, P. & Bindelle, J., 2016. Nutritive value of three tropical forage legumes and their influence on growth performance, carcass traits and organ weights of pigs. *Trop. Anim. Health. Prod.* 48, 1165-1173.
- Kambashi, B., Picron, P., Boudry, C., Thewis, A., Kiatoko, H. & Bindelle, J., 2014. Nutritive value of tropical forage plants fed to pigs in the Western provinces of the Democratic Republic of the Congo. *Anim. Feed Sci. Technol.* 191, 47-56.
- Karunajeewa, H., Ijagbuji, E.G. & Reece, R.L., 1990. Effect of dietary levels of rapeseed meal and polyethylene on the performance of male broiler chickens. *Br. Poult. Sci.* 31, 545-555.
- Khanyile, M., Ndou, S.P. & Chimonyo, M., 2014. Influence of *Acacia tortilis* leaf meal-based diets on growth performance of pigs. *Livest. Sci.* 167, 211-218.
- Kraus, T.E.C., Zasoski, R.J., Dahlgren, R.A., Horwath, R.W. & Preston, C.M., 2004. Carbon and nitrogen dynamics in a forest soil amended with purified tannins from different plant species. *Soil. Biol. Biochem.* 36, 309-321.
- Lalthansanga, J. & Samanta, A. K., 2015. Effect of feeding chayote (*Sechium edule*) meal on growth performance and nutrient utilization in indigenous pig (Zovawk) of Mizoram. *Vet. World.* 8, 918-923.
- Lim, C, K., Penesyan, A, Hassan, K.A., Loper, E.J. & Paulsen, T.I., 2013. Effect of tannic acid on the transcriptome of the soil bacterium *Pseudomonas protegens* Pf-5. *J. Appl. Environ. Microbiol.* 79, 3141-3145.
- Makkar, H.P.S., 2003. Effects and fate of tannins in ruminant animals, adaptation to tannins and strategies to overcome detrimental effects of feeding tannin rich feeds. *Small Rumin. Res.* 49, 241-256.
- Makkar, H.P.S., Blümmel, M. & Becker, K., 1995. Formation of complexes between polyvinyl pyrrolidone and polyethylene glycol with tannins and their implications in gas production and true digestibility *In vitro* techniques. *Br. J. Nutr.* 73, 897-913.
- Mansoori, B. & Acamovic, T., 2009. Influence of tannic acid and polyethylene glycol on the excretion and digestibility of amino acids in gelatin-fed broilers. *Br. Poult. Sci.* 50, 199-206.
- Mapiye, C., Chimonyo, M., Marufu, M.C. & Dzama, K., 2011. Utility of *Acacia karroo* for beef production in Southern African smallholder farming systems: A review. *Anim. Feed. Sci. Technol.* 164, 135-146.
- Martens, S.D., Tiemann, T.T., Bindelle, J., Peters, M. & Lascano, C.E., 2013. Alternative plant protein sources for pigs and chickens in the tropics—nutritional value and constraints: a review. *J. Agr. Rural. Dev. Trop.* 113, 101-123.
- Medugu, C.I., Saleh, B., Igwebuikwe, J.U. & Ndirmbita, R.L., 2012. Strategies to improve the utilization of tannin-rich feed materials by poultry. *Int. J. Poult. Sci.* 11, 417-423.
- Min, B.R., Barry, T.N., Attwood, G.T. & McNabb, W.C., 2003. The effect of condensed tannins on the nutritional and health of ruminants fed fresh temperate forage: a review. *Anim. Feed Sci. Technol.* 106, 3-19.
- Min, B.R., Hart, S.P., 2003. Tannins for suppression of internal parasites. *J. Animal. Sci.* 81,102- 109.
- Mlambo, V., Marume, U., & Gajana, C. S., 2015. Utility of the browser's behavioural and physiological strategies in coping with dietary tannins: Are exogenous tannin-inactivating treatments necessary? *S. Afr. J. Anim. Sci.* 45, 441-451.
- Mlambo, V., Sikosana, J. L.N., Mould, F. L., Smith, T., Owen, E. & Mueller-Harvey, I., 2007. The effectiveness of adapted rumen fluid versus Peg to ferment tannin-containing substrates *In vitro*. *Anim. Feed Sci. Technol.* 136, 128-136.
- Mokoboki, H.K., Ndlovu, L.R. & Malatje, M.M., 2005. "Intake and relative palatability indices of *Acacia* species fed to sheep and goats." *Agrofor. Syst.* 81, 31–35.

- Mokoboki, K. H., Malatje, M., Ng'ambi, W. J. & Ndlovu, R. L., 2013. Short communication: The use of polyethylene glycol in the diagnosis of polyphenolics in the foliage of *Acacia* species. *Asian Int. J. Life Sc.* 9, 103-113.
- Mueller-Harvey, I., 2006. Review unraveling the conundrum of tannins in animal nutrition and health. *J. Sci. Food Agric.* 86, 2010-2037.
- Mukumbo, F.E., Maphosa, V., Hugo, A., Nkukwana, T.T., Mabusela, T.P. & Muchenje V., 2014. Effect of Moringa oleifera leaf meal on finisher pig growth performance, meat quality, shelf life and fatty acid composition of pork. *S. Afr. J. Anim. Sci.* 44, 388-400.
- Munyati, C., Economon, E.B. & Malahlela, O.E., 2013. Effect of canopy cover and canopy background variables on spectral profiles of savanna rangeland bush encroachment species based on selected *Acacia* species (*mellifera*, *tortilis*, *karroo*) and *Dichrostachys cinerea* at Mokopane, South Africa. *J. Arid. Environ.* 94, 121-126.
- Naumann, H.D., Tedeschi, L.O., Zeller, W.E. and Huntley, N.F., 2017. The role of condensed tannins in ruminant animal production: advances, limitations and future directions. *Revista Brasileira de Zootecnia*, 46(12), pp.929-949.
- Ndlovu, T., Chimonyo, M., Okoh, A.I., Muchenje, V., Dzama, K., Dube, S. & Raats, J.G., 2009. A comparison of nutritionally-related blood metabolites among Nguni, Bonsmara and Angus steers rose on sweet-veld. *Vet. J.* 179, 273-281.
- Ndou, S. P., Khanyile, M. & Chimonyo, M., 2015. Growth performance and nutrition-related serum metabolites in growing pigs fed on Acacia Tortilis leaf meal. *Livest. Sci.* 182, 22-27.
- NFTA, 1991. NFT Highlight. A quick guide to useful nitrogen fixing trees from around the world. *Acacia tortilis*: fodder trees for desert sands.
- Nsahlai, I.V., Fon, F.N. & Basha, N.A.D., 2011. The effect of tannin with and without polyethylene glycol on *In vitro* gas production and microbial enzyme activity. *S. Afr. J. Anim. Sci.* 41, 337-344.
- Nyamukanza, C.C. & Scogings, P.F., 2008. Sprout selection and performance of goats fed *Acacia karroo* coppices in the False Thornveld of the Eastern Cape. *S. Afr. J. Anim. Sci.* 38, 83-90.
- O'Connor, T.G., Puttick, J.R. & Hoffman, M.T., 2014. Bush encroachment in southern Africa: changes and causes. *Afr. J. Range. Forage. Sci.* 31, 67-88.
- Oduguwa, O.O., Pirgozliev, V. & Acamovic, T., 2007. Energy metabolisability and digestibility of amoni acids by broilers fed on malted sorghum sprouts supplemented with polyethylene glycol, charcoal, phytase and xylanase. *Br. Poult. Sci.* 48, 55-63.
- Orwa C., Mutua, A., Kindt, R., Jamnadass, R. & Anthony, S., 2009. Agroforestry database: a tree reference and selection guide version 4.0. *J. Pharmacogn. Phytochem.* 1,45-50.
- Pathak, K.A., Dutta, N., Banerjee, S.P., Pattanaik, K. A. & Sharma, K., 2013. Influence of dietary supplementation of condensed tannins through leaf meal mixture on intake, nutrient utilization and performance of *Haemonchus contortus* infected sheep Asian-Australas. *J. Anim. Sci.* 26, 1446-1458.
- Phengsavanh, P., 2013. Forage legumes as feed for pigs in smallholder production systems in the North of Lao PDR, PhD thesis, Swedish University of Agricultural Sciences, Uppsala Sweden.
- Piva, G., 1992. Nutritional value of sunflower seed and sunflower meal for livestock animal. In: Proceedings of the 13th International Sunflower Conference. pp. 1611-1625.
- Ravindran, V., & Blair, R., 1992. Feed resources for poultry production in Asia and the Pacific. II. Plant protein sources. *Worlds. Poult. Sci. J.* 48, 205-231.
- Rowan, G. & Lawrence, T.L.J., 1986. Growth, tissue deposition and metabolism studies in growing pigs given low glucosinolate rapeseed meal diets containing different amount of copper and polyethylene glycol. *J. Agric. Sci.* 107, 505-513.
- Rubanza, K.D.C., Shem, N. M., Ichinole, T. & Fujihara, T., 2006. Polyphenolics and mineral composition of selected browse tree species leaves native to north-western Tanzania traditional fodder banks. *J. Food. Agric. Environ.* 4, 328-332.
- Saeidi, F., Houshmand, M., Parsaei, S., & Zarrin, M., 2017. Potential of oak acorn with and without polyethylene glycol as an alternative to corn in broiler diets. *S. Afr. J. Anim. Sci.* 47, no 6.
- Salem, A.Z.M., Salem, M.Z.M., El-Adawy, M.M. & Robinson, P.H., 2005. Nutritive evaluations of some browse tree foliages during the dry: Secindar compounds, feed intake and *In vivo* digestibility in sheep and goats. *Anim. Feed Sci. Technol.* 127, 251-267.
- Savage, G.P., Smith, W.C. & Briggs, P.A., 1980. A note on the influence of micronization and polyethylene glycol on the nutritional value of brown sorghum for growing pigs. *Anim. Sci.* 30, 157-160.
- Scogings, P. F., Dziba, L. E. & Gordon, I. J., 2004. Leaf chemistry of woody plants in relation to season, canopy retention and goat browsing in a semiarid subtropical savanna. *Aust. J. Ecol.* 29, 278-286.
- Silanikove, N., Perevolotsky, A. & Provenza, D. F., 2001. Use of tannin-binding chemicals to assay for tannins and their negative post-ingestive effects in ruminants. *Anim. Feed Sci. Technol.* 91, 69-81.
- Solomon, T.B. & Mlambo, V., 2010. Encroachment of *Acacia brevispica* and *Acacia drepanolobium* in Semi-arid rangelands of Ethiopia and their influence on Sub-Canopy grasses. *Res. J. Bot.* 5, 1-13.
- Tefera, S., Mlambo, V., Dlamini, B.J., Dlamini, A.M., Koralagam, K.D.N. & Mould, F.L., 2008. Chemical composition and in vitro ruminal fermentation of common tree forages in the semi-arid rangelands of Swaziland. *Anim. Feed Sci. Technol.* 142, 99-110.
- Tufarelli, V., Casalino, E., D'Alessandro, A. G. & Laudadio, V., 2017. Dietary Phenolic Compounds: Biochemistry, Metabolism and Significance in Animal and Human Health. *Curr. Drug. Metab.* 18, DOI: 10.2174/1389200218666170925124004.
- Turner, P.V., Brabb, T., Pekow, C. & Vasbinder, M.A., 2011. PMCID, PMC3189662 Administration of substances to laboratory animals, Routes of administration and factors to consider. *J. Am. Assoc. Lab. Anim.* 50, 600-613.

- Wahbi, J., Kaouther, M., Lamia, H., Mohsen, H. & Larbi, M.K., 2013. *Acacia tortilis* (Forsk) Hayne subsp *raddiana* (Savi) in North African pseudo-savanna: Morphological variability and seed characteristics. *Afr. J. Agric. Res.* 8, 2482-2492.
- Ward D., Hoffman, M.T. & Collocott, S.J., 2014. A century of woody plant encroachment in the dry Kimberley savanna of South Africa. *Afr. J. Range. Forage. Sci.* 31, 107-121.
- Washington, I.M. & Hoosier, G.V., 2012. Clinical biochemistry and hematology. In Suckow M.A., Stevens, K.A., Wilson, R.P (authors). *The Laboratory Rabbit, Guinea Pig, Hamster, and Other Rodents*. Academic Press pp. 57-116.
- Wina, E., Tangendjaja, B. & Susana, I.W.R., 2005. "Effects of chopping, and soaking in water, hydrochloric acidic and calcium hydroxide solutions on the nutritional value of *Acacia villosa* for goats." *Anim. Feed Sci. Technol.* 122, 79-92.
- Woyengo, T. A., Beltranena, E. & Zijlstra, R. T., 2014. Non-ruminant nutrition symposium: controlling feed cost by including alternative ingredients into pig diets: a review. *J. Anim. Sci.* 92, 1293-1305.
- Yan, Q., & Bennick, A., 1995. Identification of histatins as tannin-binding proteins in human saliva. *Biochemical Journal*, 311, 341-347.
- Yu, F., Moughan, P.J., Barry, T.N. & McNabb, W.C., 1996. The effect of condensed tannins from heated and unheated cottonseed on the ileal digestibility of amino acids for the growing rat and pig. *Br. J. Nutr.* 76, 359-371.