

Images in clinical medicine



Huge arachnoidal cyst with recent onset of seizure in an adult

Mohamed El Biadi, Salah Bellasri

Corresponding author: Mohamed El Biadi, Department of Radiology, Avicenne Military Hospital of Marrakech, Faculty of Medicine and Pharmacy of Marrakech, Cadi Ayyad University of Marrakech, Marrakech, Morocco. med.biadi@gmail.com

Received: 27 Dec 2022 - **Accepted:** 04 Jan 2023 - **Published:** 14 Jun 2023

Keywords: Huge arachnoidal cyst, onset of seizure, adult, brain imaging

Copyright: Mohamed El Biadi et al. Pan African Medical Journal (ISSN: 1937-8688). This is an Open Access article distributed under the terms of the Creative Commons Attribution International 4.0 License (<https://creativecommons.org/licenses/by/4.0/>), which permits unrestricted use, distribution, and reproduction in any medium, provided the original work is properly cited.

Cite this article: Mohamed El Biadi et al. Huge arachnoidal cyst with recent onset of seizure in an adult. Pan African Medical Journal. 2023;45(84). 10.11604/pamj.2023.45.84.38644

Available online at: <https://www.panafrican-med-journal.com//content/article/45/84/full>

Huge arachnoidal cyst with recent onset of seizure in an adult

Mohamed El Biadi^{1,&}, Salah Bellasri¹

¹Department of Radiology, Avicenne Military Hospital of Marrakech, Faculty of Medicine and Pharmacy of Marrakech, Cadi Ayyad University of Marrakech, Marrakech, Morocco

&Corresponding author

Mohamed El Biadi, Department of Radiology, Avicenne Military Hospital of Marrakech, Faculty of Medicine and Pharmacy of Marrakech, Cadi Ayyad University of Marrakech, Marrakech, Morocco

Image in medicine

A 68-year-old right-handed man, having consulted for the occurrence of a first epileptic seizure. Brain computerized tomography (CT) scan and magnetic resonance imaging (MRI) showed a giant congenital supratentorial arachnoidal cyst occupying the anterior two-thirds of the right hemisphere, measuring 14.09x6.07 (APxT) cm and 11.67 cm high, compressing the right cerebral hemisphere and the right cerebral peduncle with a midline shift. Arachnoidal cysts are congenital malformations containing cerebrospinal fluid. They may be asymptomatic and discovered incidentally on imaging. When they are large, as in this patient, they can cause a mass effect.

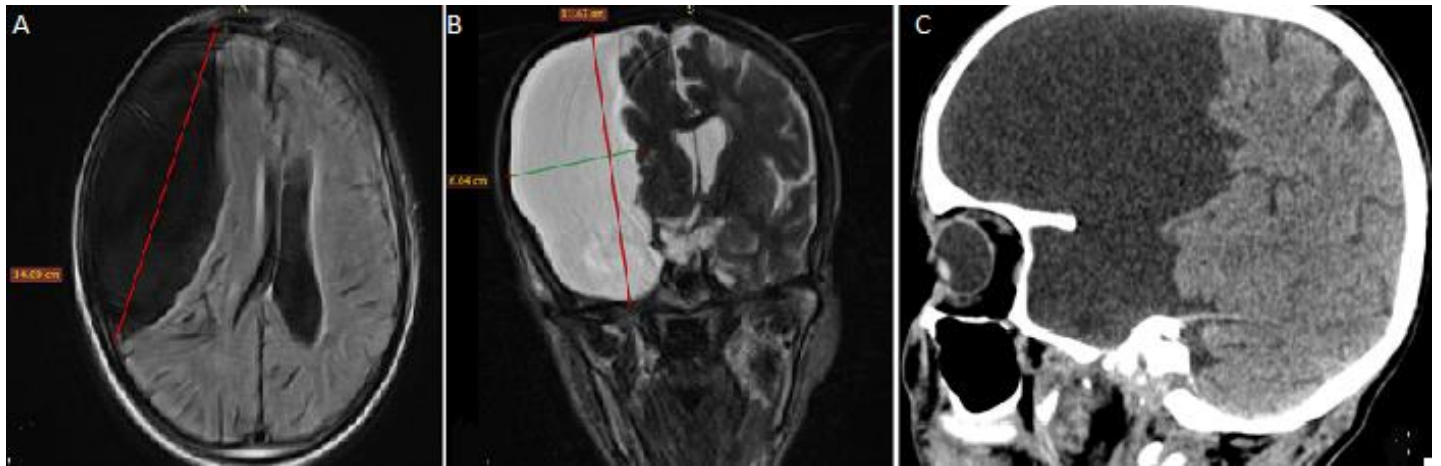


Figure 1: magnetic resonance imaging of the brain (axial T1-weighted; A) and coronal T2-weighted; B) cerebral computerizing tomography scan in spontaneous contrast, sagittal section; C) huge compressive arachnoid cyst of the non-dominant hemisphere