

## Images in clinical medicine



# World Health Organization meningioma grade II

Rutuja Bhaskar Parkhi,  Snehal Subrat Samal

**Corresponding author:** Snehal Subrat Samal, Department of Neurophysiotherapy, Ravi Nair Physiotherapy College, Datta Meghe Institute of Medical Sciences, Sawangi, Meghe, Wardha, Maharashtra, India. snehalsamal11@rediffmail.com

**Received:** 05 Apr 2022 - **Accepted:** 08 Apr 2022 - **Published:** 08 Jul 2022

**Keywords:** Meningioma, brain tumor, neoplastic etiology

**Copyright:** Rutuja Bhaskar Parkhi et al. Pan African Medical Journal (ISSN: 1937-8688). This is an Open Access article distributed under the terms of the Creative Commons Attribution International 4.0 License (<https://creativecommons.org/licenses/by/4.0/>), which permits unrestricted use, distribution, and reproduction in any medium, provided the original work is properly cited.

**Cite this article:** Rutuja Bhaskar Parkhi et al. World Health Organization meningioma grade II. Pan African Medical Journal. 2022;42(192). 10.11604/pamj.2022.42.192.34663

**Available online at:** <https://www.panafrican-med-journal.com//content/article/42/192/full>

## World Health Organization meningioma grade II

Rutuja Bhaskar Parkhi<sup>1</sup>, Snehal Subrat Samal<sup>1,&</sup>

<sup>1</sup>Department of Neurophysiotherapy, Ravi Nair Physiotherapy College, Datta Meghe Institute of Medical Sciences, Sawangi, Meghe, Wardha, Maharashtra, India

### **&Corresponding author**

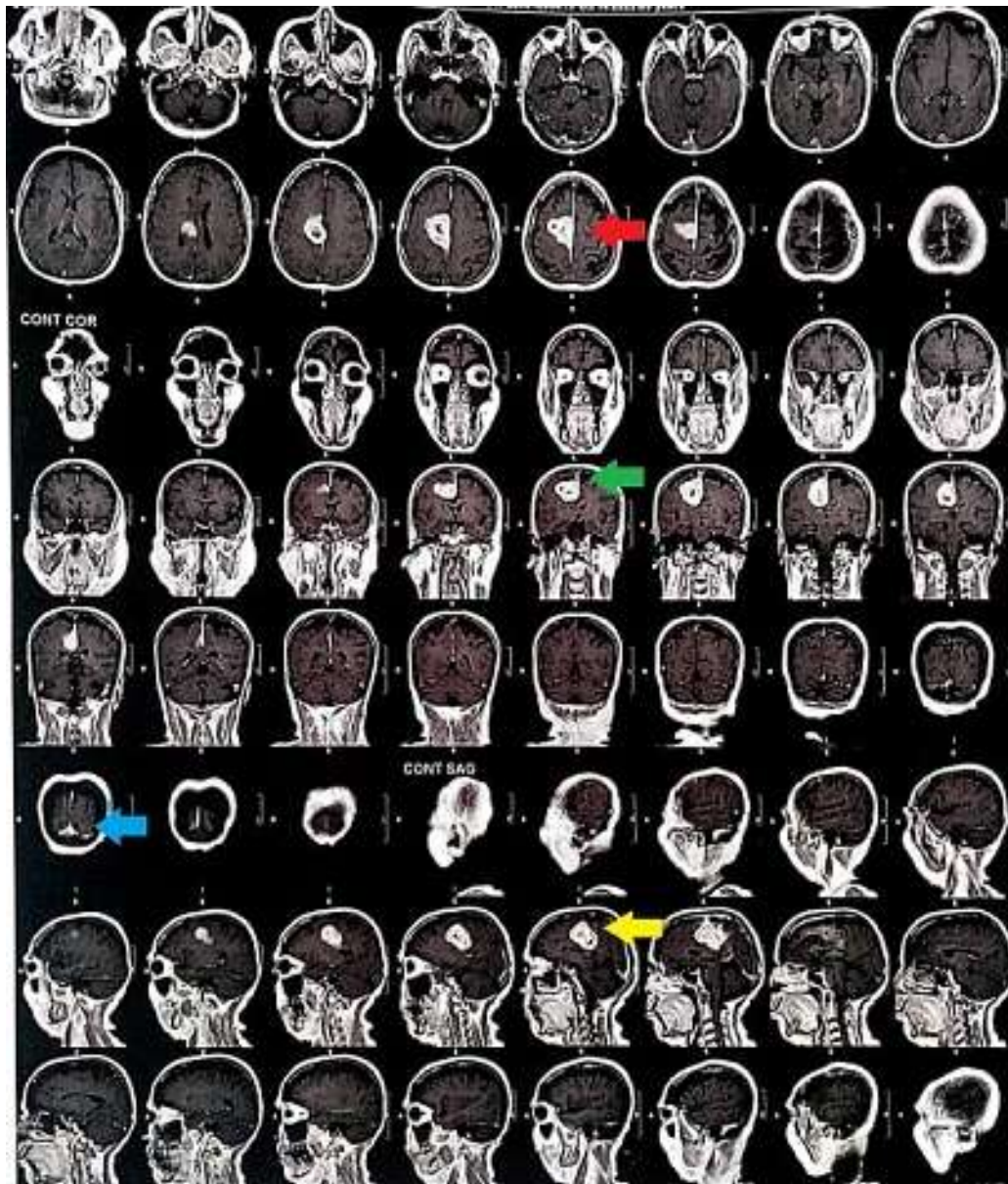
Snehal Subrat Samal, Department of Neurophysiotherapy, Ravi Nair Physiotherapy College, Datta Meghe Institute of Medical Sciences, Sawangi, Meghe, Wardha, Maharashtra, India

## Image in medicine

We are presenting to you a Magnetic Resonance Imaging (MRI) finding of a 65 years old female who presented to us with a complain of headache which was over the frontal region and on and off in nature. The patient also complains of imbalance during walking and tingling, numbness and weakness in the left upper and lower extremities. She gives a history of 2 episodes of seizures. Contrast magnetic resonance imaging findings revealed a well-defined extra-axial lesion measuring approximately 4.1\*3.9cm (red arrow and green arrow) in the parafalcine region at the right frontoparietal lobes with mass effect (blue arrow). In contrast, the lesion shows avid peripheral enhancement with tiny non-enhancing

central core features suggesting neoplastic etiology (yellow arrow), i.e., World Health Organization meningioma grade II. Meningiomas, classified as grade 2 by the World Health Organization, are aggressive tumors with a high recurrence rate that necessitates multiple surgical procedures and can significantly worsen a patient's neurological

condition. The lesion is hyperintense and homogeneous near the coronal suture. She underwent surgical excision of the right frontoparietal parasagittal tumor and is under regular physiotherapeutic and medical management for the residual weakness.



**Figure 1:** MRI findings of grade II meningioma; red and green arrows show extra-axial lesions measuring approximately 4.1\*3.9cm; the blue arrow shows the mass effect; the yellow arrow shows neoplastic etiology