

Images in clinical medicine



Wolff-Parkinson-White syndrome type B

 Gwinyai Masukume, Mark Dixon

Corresponding author: Gwinyai Masukume, Private Practice, Bulawayo, Zimbabwe. parturitions@gmail.com

Received: 20 Nov 2021 - **Accepted:** 01 Dec 2022 - **Published:** 05 Dec 2022

Keywords: Cardiology, electrocardiogram, Wolff-Parkinson-White syndrome

Copyright: Gwinyai Masukume et al. Pan African Medical Journal (ISSN: 1937-8688). This is an Open Access article distributed under the terms of the Creative Commons Attribution International 4.0 License (<https://creativecommons.org/licenses/by/4.0/>), which permits unrestricted use, distribution, and reproduction in any medium, provided the original work is properly cited.

Cite this article: Gwinyai Masukume et al. Wolff-Parkinson-White syndrome type B. Pan African Medical Journal. 2022;43(177). 10.11604/pamj.2022.43.177.32528

Available online at: <https://www.panafrican-med-journal.com//content/article/43/177/full>

Wolff-Parkinson-White syndrome type B

Gwinyai Masukume^{1,&}, Mark Dixon²

¹Private Practice, Bulawayo, Zimbabwe, ²National University of Science and Technology, Bulawayo, Zimbabwe

&Corresponding author

Gwinyai Masukume, Private Practice, Bulawayo, Zimbabwe

Image in medicine

A 25-year-old female presented for a medical consultation complaining of sudden central chest pain, pleuritic in nature. She had never experienced such pain before. She denied experiencing coughing, shortness of breath or other respiratory or cardiac symptoms. Notably her grandparents, now in their 80s, were apparently being treated for ischemic heart disease attributed to their old age. She occasionally drank alcohol < 20 units per week. She was not using tobacco. On examination, her body mass index was 24.8 kg/m², waist circumference 86 cm, pulse rate 59 beats per minute, blood pressure 103/68 mmHg, SpO₂ 97% and temperature 37°C. Her general, cardiovascular and respiratory examinations were all normal. A

resting electrocardiogram (ECG) showed a normal sinus rhythm, PR interval 126 ms, prolonged QRS duration 138 ms, and a delta wave (pictured - lead II). Leads I, II, and aVF had inverted T waves. Ventricular pre-excitation, Wolff-Parkinson-White syndrome type B was diagnosed. Echocardiography was unremarkable. The nature of her condition was explained to her. Advice to avoid medications like verapamil and digoxin was

offered along with a recommendation to avoid over-strenuous activity. Screening ECGs were advised for her immediate family. As she had been asymptomatic up to this point, cardiology follow-up was recommended for consideration of a prophylactic ablation procedure. This case illustrates the benefit of a high index of suspicion and the utility of electrocardiography in diagnosing a rare condition.

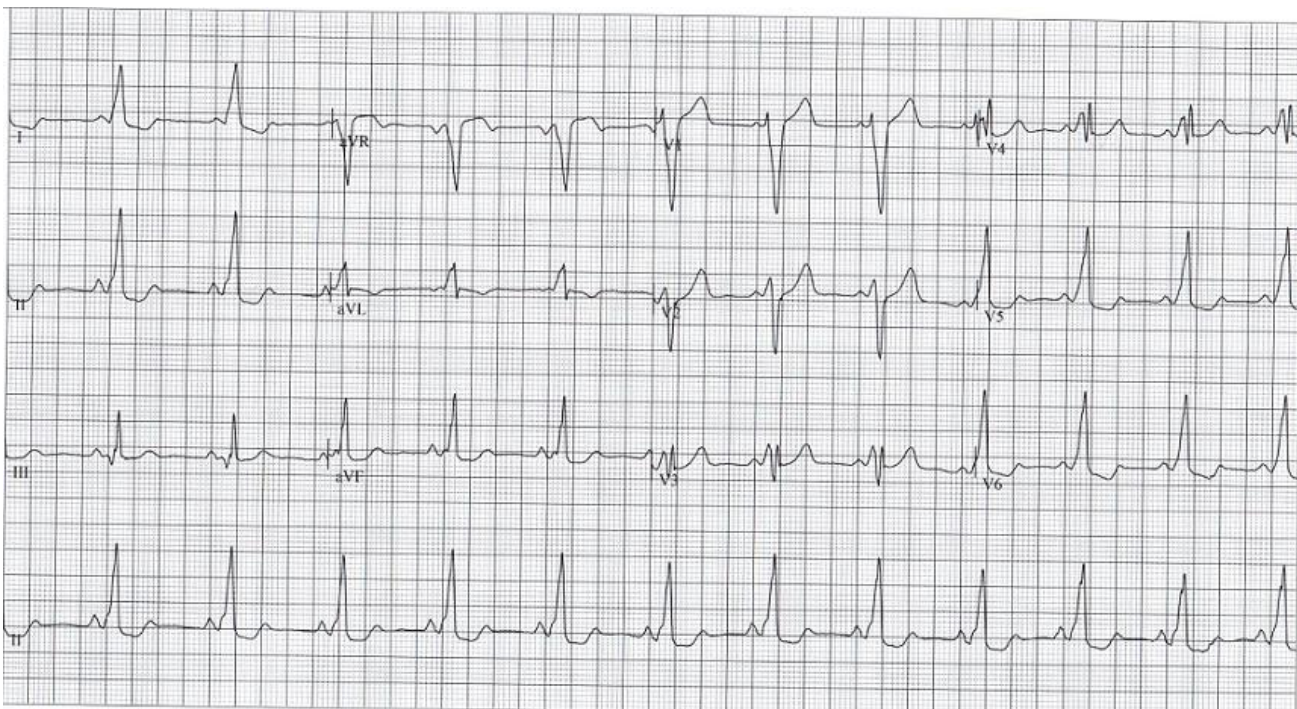


Figure 1: electrocardiogram showing a normal sinus rhythm, PR interval 126 ms, prolonged QRS duration 138 ms and a delta wave (pictured - lead II); leads I, II and aVF have inverted T waves