

Images in clinical medicine

Acute decompensated left heart failure in a young patient revealing a large obstructive left ventricular mass

Houda Mokhlis, Achraf Zaimi

Corresponding author: Houda Mokhlis, Department of Cardiology, Mohammed V Military Hospital, Mohammed V University, Rabat, Morocco. houdamokhlis92@gmail.com

Received: 03 Aug 2021 - **Accepted:** 13 Aug 2021 - **Published:** 06 Oct 2021

Keywords: Left heart failure, ventricular mass, thrombus

Copyright: Houda Mokhlis et al. Pan African Medical Journal (ISSN: 1937-8688). This is an Open Access article distributed under the terms of the Creative Commons Attribution International 4.0 License (<https://creativecommons.org/licenses/by/4.0/>), which permits unrestricted use, distribution, and reproduction in any medium, provided the original work is properly cited.

Cite this article: Houda Mokhlis et al. Acute decompensated left heart failure in a young patient revealing a large obstructive left ventricular mass. Pan African Medical Journal. 2021;40(79). 10.11604/pamj.2021.40.79.31056

Available online at: <https://www.panafrican-med-journal.com//content/article/40/79/full>

Acute decompensated left heart failure in a young patient revealing a large obstructive left ventricular mass

Houda Mokhlis^{1,&}, Achraf Zaimi¹

¹Department of Cardiology, Mohammed V Military Hospital, Mohammed V University, Rabat, Morocco

&Corresponding author

Houda Mokhlis, Department of Cardiology, Mohammed V Military Hospital, Mohammed V University, Rabat, Morocco

Image in medicine

We report the case of a 21-year-old female patient with no prior cardiovascular history, at only 3 months postpartum, who was presented to the emergency room for rapidly worsening dyspnea, the physical examination showed low O₂ stats and crackling lung sounds with signs of respiratory struggle, electrocardiograms (EKG) showed a regular sinus tachycardia at 145bpm with negative T waves in apicolateral leads. The patient was intubated and benefited from an emergency thoracic computed tomography (CT) angiography

which showed a bilateral hilar alveolar-interstitial syndrome without signs of pulmonary embolism, the transthoracic echocardiography showed a huge obstructive mass of the left ventricle with segmental kinetic disorders. To better understand

the nature of this mass a transoesophageal echocardiography was performed which was in favour of a thrombus, unfortunately, the patient died the same day before any procedure could have been done.

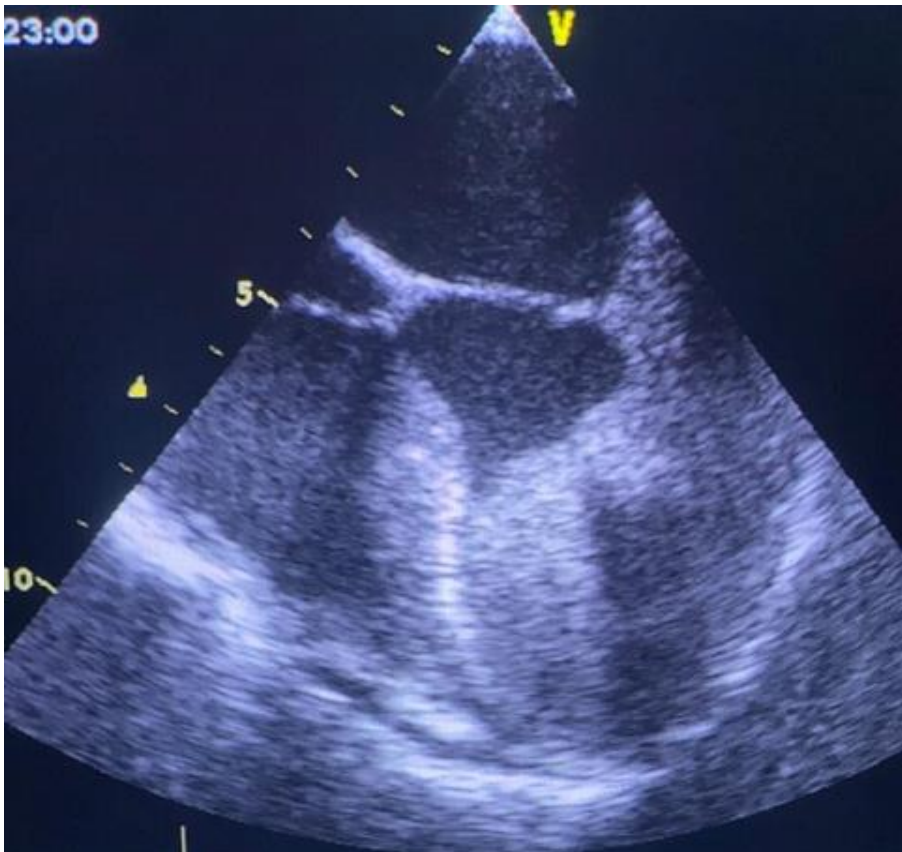


Figure 1: transesophageal echocardiography image showing the mass