

Images in clinical medicine

A rare case of middle cerebral artery aneurysm

 Medhavi Vivek Joshi,  Rashmi Ramesh Walke

Corresponding author: Rashmi Ramesh Walke, Ravi Nair Physiotherapy College, Datta Meghe Institute of Medical Sciences, Sawangi, Wardha, Maharashtra, India. rashmi20202@gmail.com

Received: 21 Jul 2021 - **Accepted:** 02 Aug 2021 - **Published:** 15 Aug 2021

Keywords: Aneurysm coiling, digital subtraction angiography, embolization

Copyright: Medhavi Vivek Joshi et al. Pan African Medical Journal (ISSN: 1937-8688). This is an Open Access article distributed under the terms of the Creative Commons Attribution International 4.0 License (<https://creativecommons.org/licenses/by/4.0/>), which permits unrestricted use, distribution, and reproduction in any medium, provided the original work is properly cited.

Cite this article: Medhavi Vivek Joshi et al. A rare case of middle cerebral artery aneurysm. Pan African Medical Journal. 2021;39(241). 10.11604/pamj.2021.39.241.30870

Available online at: <https://www.panafrican-med-journal.com//content/article/39/241/full>

A rare case of middle cerebral artery aneurysm

Medhavi Vivek Joshi¹, Rashmi Ramesh Walke^{1,&}

¹Ravi Nair Physiotherapy College, Datta Meghe Institute of Medical Sciences, Sawangi, Wardha, Maharashtra, India

&Corresponding author

Rashmi Ramesh Walke, Ravi Nair Physiotherapy College, Datta Meghe Institute of Medical Sciences, Sawangi, Wardha, Maharashtra, India

Image in medicine

A 40-year-old female, presented with complaints of severe headache since past five days. She is a known case of controlled hypertension. Multislice computed tomography (CT) angiography-brain arteries was done which revealed abnormal high attenuation lesions of blood Hounsfield units (HU), seen in the basal cisterns, suprasellar cisterns, right sylvian fissure and few cortical sulci of right cerebral hemisphere were suggestive of subarachnoid haemorrhage. It also revealed right Middle cerebral artery aneurysm measuring 1.13 x 1.02cm. Surgical management through aneurysm coiling and embolization was done.

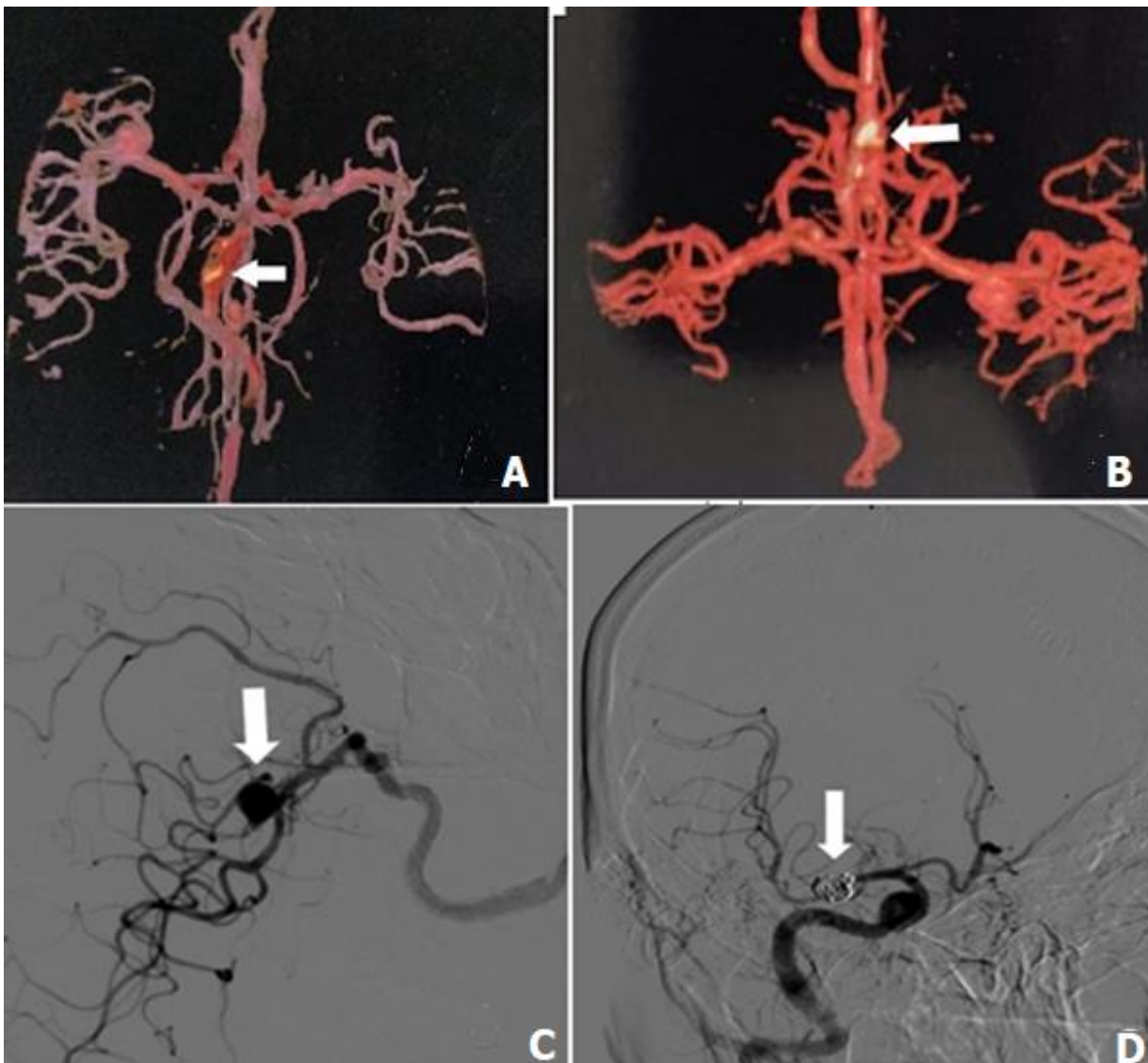


Figure 1: showing angiography reports pre and post aneurysm coiling and embolization; A,B) pre-operative multi-slice CT angiography of Brain arteries revealing Aneurysm in right middle cerebral artery; C) digital subtraction angiography (intravenous) pre-operative, showing right middle cerebral artery aneurysm (arrows); D) post-operative digital intravenous angiogram showing (arrow) coiling of the aneurysm and embolization visible through restricted blood flow to the coiled area