

Images in clinical medicine

A rare case of primary splenic lymphoma

 Issam Loukil, Amine Zouari

Corresponding author: Issam Loukil, Service de Chirurgie Générale Tataouine, Tataouine, Tunisie. issamloukilyoussef@gmail.com

Received: 14 Jun 2021 - **Accepted:** 29 Jun 2021 - **Published:** 16 Jul 2021

Keywords: spleen, lymphoma, primitive

Copyright: Issam Loukil et al. Pan African Medical Journal (ISSN: 1937-8688). This is an Open Access article distributed under the terms of the Creative Commons Attribution International 4.0 License (<https://creativecommons.org/licenses/by/4.0/>), which permits unrestricted use, distribution, and reproduction in any medium, provided the original work is properly cited.

Cite this article: Issam Loukil et al. A rare case of primary splenic lymphoma. Pan African Medical Journal. 2021;39(204). 10.11604/pamj.2021.39.204.30360

Available online at: <https://www.panafrican-med-journal.com//content/article/39/204/full>

A rare case of primary splenic lymphoma

Issam Loukil^{1,&}, Amine Zouari²

¹Service de Chirurgie Générale Tataouine, Tataouine, Tunisie, ²Service de Chirurgie Générale Sfax, Sfax, Tunisie

&Corresponding author

Issam Loukil, Service de Chirurgie Générale Tataouine, Tataouine, Tunisie

Image in medicine

A 64-year-old man, with no medical history, presented with an inflammatory syndrome without bacteriological or serological anomaly. Abdominal ultrasound finds a mediosplenic mass of 5cm, hypoechoic heterogeneous without Doppler signals. Computed tomography (CT) scan describes hypodense mass slightly enhanced at the periphery, measuring 57x60x65mm and deforming the splenic hilum, without splenomegaly nor lymphnode (A). Magnetic resonance imaging found a polylobed lesion in T1-T2 isosignal, diffusion hypersignal, crossed by fibrous spans and delimited by a thin wall in T2 hypointense taking the contrast (B, C). The fine needle biopsy was not performed and the treatment decision was to perform a

splenectomy. Macroscopic examination described intra splenic tumor polycyclic whitish, crossed by fibrous septa in accordance with imaging (D).

Anatomic-pathologic section concluded to a large B cell primary splenic lymphoma. The one-year CT scan did not show any recurrence.

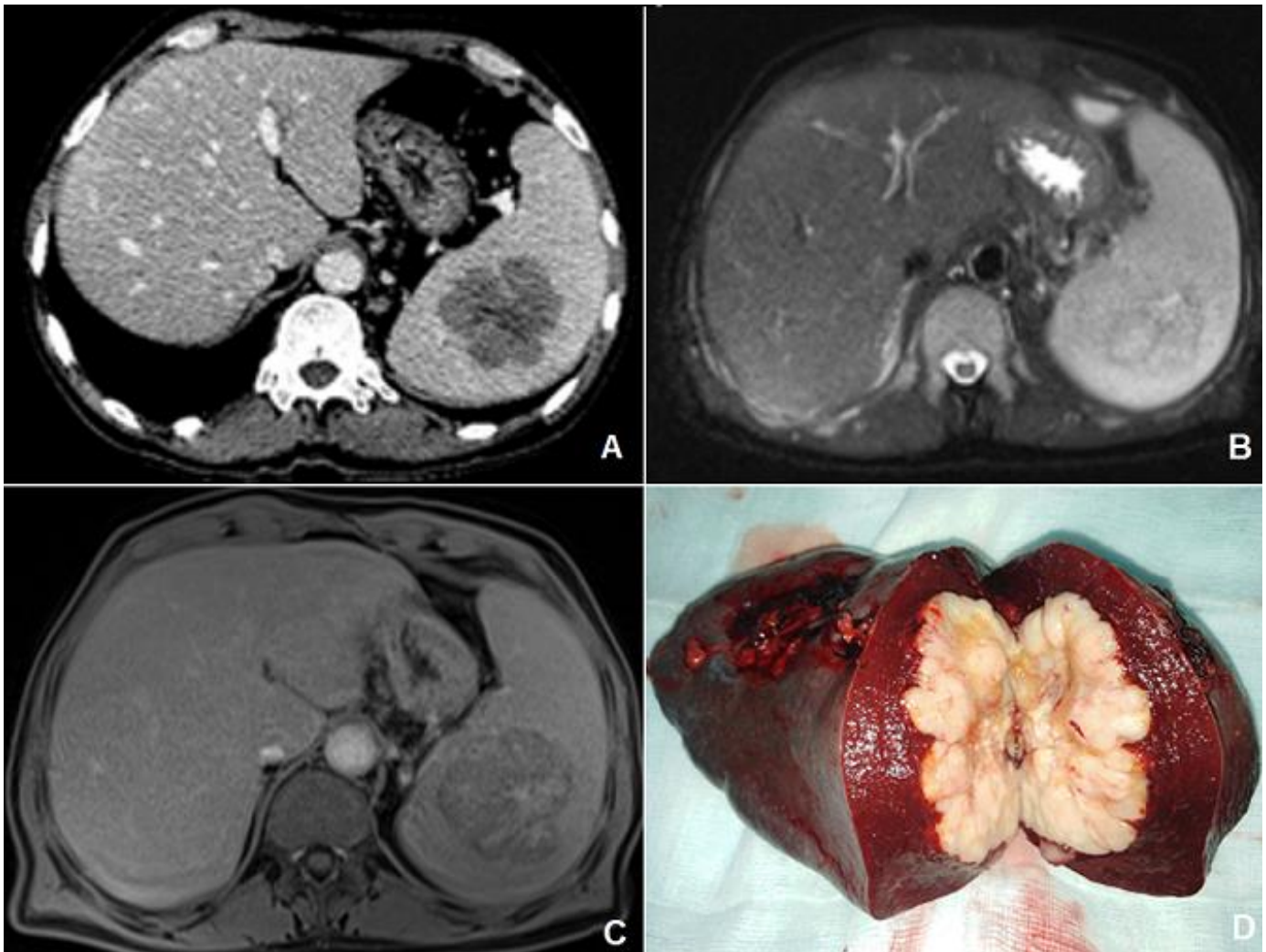


Figure 1: A) CT scan injected during portal phase: hypodense mass slightly enhanced at the periphery, measuring 57x60x65mm and deforming the splenic hilum, without splenomegaly nor lymph node; B, C) magnetic resonance imaging found a polylobed lesion in T1-T2 isosignal, diffusion hypersignal, crossed by fibrous spans and delimited by a thin wall in T2 hypointense taking the contrast; D) intra-splenic tumor mass with a whitish macroscopic appearance, with polycyclic contours and crossed by fibrous partitions