

## Images in medicine

### Retinal involvement in an acute lymphoblastic leukemia



Fouad Chraibi<sup>1,&</sup>, Idriss Andaloussi Benatiya<sup>1</sup>

<sup>1</sup>University Allal Ben Abdellah, University Hospital Hassan II, Fez, Morocco

<sup>&</sup>Corresponding author: Fouad Chraibi, University Allal Ben Abdellah, University Hospital Hassan II, Fez, Morocco

Key words: Retinal infiltration, lymphoblastic leukemia, papilledema

Received: 18/04/2016 - Accepted: 20/11/2016 - Published: 18/04/2019

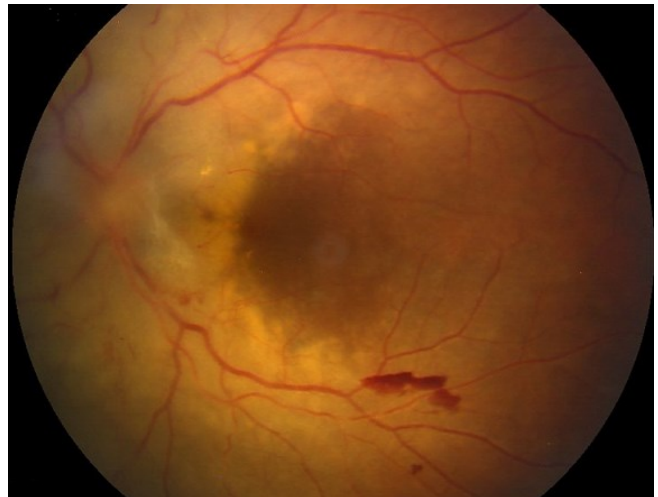
**Pan African Medical Journal. 2019;32:192. doi:10.11604/pamj.2019.32.192.9648**

This article is available online at: <http://www.panafrican-med-journal.com/content/article/32/192/full/>

© Fouad Chraibi et al. The Pan African Medical Journal - ISSN 1937-8688. This is an Open Access article distributed under the terms of the Creative Commons Attribution License (<http://creativecommons.org/licenses/by/2.0>), which permits unrestricted use, distribution, and reproduction in any medium, provided the original work is properly cited.

### Image in medicine

We report a case of a patient who presents for ophthalmic complaints revealing systemic acute lymphoblastic leukemia. The eye fundus examination shows bilateral papilledema, retinal hemorrhages and diffuse white retinal infiltration. After chemotherapy, there was noticeable improvement of visual acuity and important regression of papilledema. Ocular involvement in leukemia is considered as a central nervous system lesion. It requires, therefore, a proper treatment including corticosteroids, chemotherapy and radiation treatment of the central nervous system.



**Figure 1:** eye fundus aspect