

Research

Evidence of EBV infection in lymphomas diagnosed in Lusaka, Zambia



Doris Kafita^{1&}, Trevor Kaile², Evans Malyangu³, Rebecca Tembo², Ephraim Zulu¹, Chrispin Chisanga¹, Annie Kalonda¹, Mulemba Samutela¹, Pascal Polepole¹, Geoffrey Kwenda¹

¹Department of Biomedical Sciences, School of Medicine, University of Zambia, Lusaka, Zambia, ²Department of Pathology and Microbiology, School of Medicine, University of Zambia, Lusaka, Zambia, ³Department of Pathology, Maina Soko Military Hospital, Lusaka, Zambia

[&]Corresponding author: Doris Kafita, Department of Biomedical Sciences, School of Medicine, University of Zambia, Lusaka, Zambia

Key words: Epstein-Barr virus, Hodgkin's lymphoma, Non-Hodgkin's lymphoma, Molecular detection, Zambia

Received: 30/01/2017 - Accepted: 02/03/2018 - Published: 28/03/2018

Abstract

Introduction: Epstein-Barr virus (EBV) is a ubiquitous virus that infects more than 90% of the world's population, and is implicated in lymphoma pathogenesis. However, in Zambia during the diagnosis of these lymphomas, the association of the virus with the lymphomas is not established. Since most patients with lymphomas have poor prognosis, the identification of the virus within the lymphoma lesion will allow for more targeted therapy. The aim of this study was to provide evidence of the presence of the EBV in lymphomas diagnosed at the University Teaching Hospital (UTH) in Lusaka, Zambia.

Methods: one hundred and fifty archival formalin-fixed paraffin embedded suspected lymphoma tissues stored over a 4-year period in the Histopathology Laboratory at the UTH in Lusaka, Zambia, were analysed. Histological methods were used to identify the lymphomas, and the virus was detected using Polymerase Chain Reaction (PCR). Subtyping of the virus was achieved through DNA sequencing of the EBNA-2 region of the viral genome. Chi square or Fisher's exact test was used to evaluate the association between EBV status, type of lymphoma and gender.

Results: the majority of the lymphomas identified were non-Hodgkin's lymphoma (NHL) (80%) followed by Hodgkin's lymphoma (HL) (20%). EBV was detected in 51.8% of the cases, 54.5% of which were associated with NHL cases, while 40.9% associated with HL cases. The predominant subtype of the virus in both types of lymphomas was subtype 1. One of the lymphoma cases harboured both subtype 1 and 2 of the virus.

Conclusion: this study showed that EBV is closely associated with lymphomas. Therefore, providing evidence of the presence of the virus in lymphoma tissues will aid in targeted therapy. To our knowledge this is the first time such data has been generated in Zambia.

Pan African Medical Journal. 2018; 29:181 doi:10.11604/pamj.2018.29.181.11847

This article is available online at: <http://www.panafrican-med-journal.com/content/article/29/181/full/>

© Doris Kafita et al. The Pan African Medical Journal - ISSN 1937-8688. This is an Open Access article distributed under the terms of the Creative Commons Attribution License (<http://creativecommons.org/licenses/by/2.0>), which permits unrestricted use, distribution, and reproduction in any medium, provided the original work is properly cited.

Introduction

Epstein-Barr virus (EBV) is an oncogenic lymphotropic virus that belongs to the γ -herpesvirus family [1]. It is a highly successful ubiquitous virus that infects more than 90% of the world's population, and is associated with several diseases whose incidence differs dramatically in different parts of the world [2]. While infection of EBV is ubiquitous, tumorigenesis only occurs in a small fraction of the infected population, suggesting that the tumorigenic transformation of human cells by EBV involves complex virus-host interactions and other additional co-factors. A compromised host immune condition and a chronic inflammatory microenvironment probably play major roles in mediating the pathogenic actions of EBV in human malignancies [3]. EBV is aetiologically linked to multiple malignancies that include nasopharyngeal carcinoma (NPC) in Southern Chinese people, a high incidence of Burkitt's lymphoma (BL) in sub-Saharan Africa and a high incidence of infectious mononucleosis in teenagers and young adults in Western countries [4]. Each of these exceptional geographical or demographic differences in disease incidence may be accounted for by other cofactors but there has long been interest in the possibility that genetic variation in the EBV in different parts of the world might play a role [5]. EBV is associated with Hodgkin's lymphomas (HL) and some diffuse large B-cell lymphomas (DLBCL) [6]. AIDS patients are at greater risk of developing aggressive lymphomas, and in most cases EBV has been associated with the pathogenesis of these tumours [7]. Older adults and children who are EBV-positive have a poor prognosis, possibly reflecting a poor immune status, which in turn means that these patients may tolerate the disease and its treatment less effectively [8]. Making use of EBV association with lymphomas for clinical purposes and therapeutic treatment is of interest [9]. Therefore, the aim of this study was to provide evidence for the presence of EBV in lymphomas diagnosed at the University Teaching Hospital in Lusaka, Zambia.

Methods

Study design: This was a laboratory-based retrospective cross-sectional study on archival formalin-fixed paraffin embedded (FFPE) lymphoma tissue stored over a 4 year period from January 2011 to December 2014 in the Histopathology Laboratory of the University Teaching Hospital, in Lusaka. The University Teaching Hospital is a tertiary referral and teaching hospital with a bed capacity of about 2000. It is the biggest reference hospital and the centre for all histopathology diagnostic work in Zambia.

Specimens: The blocks of tissues included cases from all age groups ranging from 9 months to 85 years. The blocks were prepared from tissues obtained from different anatomical sites (anal tissue, right parotid tumour, inguinal lymph node, cervical lymph node, from the nose, ulcerated skin, etc.) from 86 male and 64 female patients.

Histopathology: Tissue sections were cut at 6 μ m on a Shandon Finesse 325 microtome (Thermo Scientific-Shandon, California, USA). Diagnosis of lymphomas was examined by Haematoxylin and Eosin staining of the histological sections which were examined by an experienced pathologist and grouped as Hodgkin's lymphoma (HL) or non-Hodgkin's lymphoma (NHL).

Detection of EBV and its Subtypes in Lymphomas

Section cutting: New blades were used to cut each tissue to avoid contamination during PCR amplification of the viral targets. The sections were then transferred into a separate sterile 1.5ml

microfuge tube until required for DNA extraction. Gloves were used at all stages during tissue manipulation.

DNA extraction: Up to 30mg of tissue sections were placed in a sterile 1.5ml microfuge tube. DNA was then extracted using the EZNA Tissue DNA Extraction Kit (Omega Bio-Tek Inc, Norcross, Georgia, USA) for paraffin-embedded tissue according to the manufacturer's protocol. The DNA was eluted in 50 μ l volumes and stored at -20°C until required.

Detection of EBV DNA sequences: EBV detection and typing was determined by PCR with specific primers for EBNA3C gene. The sequences and positions of these primers are as follows: EBVD-F, 5'-AGAGGGGAGCGTGT GTTGT-3' (B95-8 coordinate 87651-87670); EBVD-R, 5'-GGCTCGTTTTGACGTCGGC-3' (B95-8 coordinate 87803-87784), which yield an amplification product of 153bp for EBV-1 and a product of 246bp for EBV-2. PCR was performed in 25 μ l using 2.5 μ l of 5pM of the forward and reverse primers, 12.5 μ l 2X PCR Master Mix (Thermo Scientific, Hanover, MD, USA), with a final MgCl₂ concentration of 3mM, 2 μ l genomic DNA. The reaction mixture was initially denatured at 95°C for 5 min followed by 35 cycles including denaturation at 95°C for 45s, annealing at 56°C for 45s, extension at 72°C for 1min, and finally elongation at 72°C for 10min. Electrophoresis of 5 μ l of the PCR product was performed on a Tris-Borate-EDTA (TBE) agarose gel (wt/vol) (100V) containing 1 μ l ethidium bromide (10 mg/ml). A 50bp ladder (Thermo Scientific, Hanover, MD, USA) was used as a molecular weight standard and all gels were visualised using a Biotop Biosens SC-645 Gel Documentation System (Biotech Co. Ltd, Shanghai, China). A human β -actin internal control was used to ascertain the quality of DNA extracted. The following primer pair was used: Forward 5'-GCC ATG TAC GTT GCT ATC C-3' and Reverse 5'-CCG CGC TCG GTG AGG-3'. The following conditions were used with primers: initial denaturation of 94°C for 1 minute, 35 cycles of 95°C for 30 seconds, 62°C for 1 minute, 72°C for 1 minute and 1 final extension cycle of 10 minutes at 72°C. The PCR products were analyzed as described above.

PCR subtyping of EBV targeting the EBNA-2 Gene: EBV targets identified as EBV-1 and EBV-2 were then subjected to PCR by amplifying a portion of the EBNA-2 gene. Either with EBNA-2 primers specific for EBV type 1 (EBVD1F: 5'-TCTTGATAGGGATCCGCTAGGATA-3', nucleotide positions 48839-48862 and EBVD1R: 5'-ACCGTGGTCTGGACTATCTGGATC-3', nucleotide positions 49335-49311 or with EBNA-2 primers specific for EBV type 2 (EBVD2F: 5'-ACTGGATATGAATCCCCTGGGCAG-3', nucleotide positions 48766-48789 and EBVD2R: 5'-GAGTCCTGTACTATCAGAACTACAATG-3', nucleotide positions 49231-49205) were used. Amplification conditions (in 50 μ l assays) were: Samples were processed for 35 cycles on a GeneAmp System 2700 PCR thermocycler (Applied Biosystems, Foster City, CA, USA) with denaturation at 94°C for 30 sec, annealing at 64°C for 1 min, extension at 72°C for 1 min. Amplified sequences were visualized on a 1.5% agarose gel using standard conditions. A 50bp DNA marker was used as a molecular size marker.

DNA sequencing of EBNA-2 PCR products: Prior to sequencing, the PCR products were first purified with the QIAquick Gel Extraction Kit (Thermo Scientific, Lithuania) following the manufacturer's instructions. Forward or reverse linear amplification were performed in 10ml. Linear amplification consisted of 25 cycles of denaturation at 96°C for 10s, annealing at 60°C for 30s and elongation at 72°C for 60s using the iCycler Thermocycler (Bio-Rad, Hercules, CA, USA). Fluorescence-labelled DNA was purified using the ethanol precipitation method. Briefly, the entire extension products were then transferred into 80ml of freshly prepared precipitation solution (3ml of 3M sodium acetate [pH 4.6], 62.5ml of non-denatured 95% ethanol and 14.5ml deionised water), incubated

for at least 1hr at room temperature and centrifuged at 14000rpm for 20min. After carefully removing the supernatant, 250ml of 70% ethanol was added to the pellet, vortexed and the contents re-centrifuged at 14000 rpm for 8min. The ethanol was then carefully aspirated and the pellet air-dried for 15min at room temperature. The samples were then analysed on an ABI PRISM 3730XL DNA analyser (Applied Biosystems, Foster City, CA, USA).

Detection of HIV-1 in lymphomas: Real time PCR was performed using a TaqMan PCR Core Reagent kit (Applied Biosystems). The forward primer deSK145 was 5'-AGTRGGGGGACAYCARGCAGCHATGCARAT-3', (1358-1387), and the reverse primer deSKCC1B was 5'-TACTAGTAGTTCCTGCTATRCACTCC-3', (1485-1512). The TaqMan probes KK-MGB and deKK-MGB were oligonucleotides 5'-ATCAATGAGGAAGCTGCAGAATGGGA-3' (1400-1425) and 5'-ATCAATGARGARGCTGCAGAATGGGA-3' (1400-1425), respectively, coupled with a reporter dye [6-carboxy fluorescein (FAM)] at the 5' end and a non-fluorescent quencher and a minor groove binder (MGB), which is a Tm enhancer, at the 3' end. The 50- μ l PCR mixture consisted of 10 μ l of extracted DNA solution (50ng/ μ l); 200nM primers (deSK145 and deSKCC1B); 200nM deKK-MGB probe; 200 μ M dATP, dCTP, and dGTP; 400 μ M dUTP; 4mM MgCl₂; 0.5U of uracil DNA glycosylase; 1.25U of AmpliTaq Gold polymerase; and 1 \times PCR buffer. Following two thermal steps at 50- μ C for 2min and at 95°C for 10min, 45 cycles of two-step PCR at 95°C for 15s and at 60°C for 1min were carried out. PCR amplification and data analysis were performed using the ABI PRISM@7900HT (Applied Biosystems).

Data analysis: Chi square or fisher's exact test was used to evaluate the association between EBV status, type of lymphoma and gender. The level of statistical significance was set at $p \leq 0.05$. Data were analysed with GraphPad Prism Software Version 6.0 for Windows (GraphPad Software, San Diego, California, USA). DNA sequences were edited with Ridom Trace Edit Software (Ridom GmbH, Münster, Germany) and analysed by BioEdit Software Version 7.0.9.1 (Ibis Biosciences, Faraday Avenue Carlsbad, California, USA). Identification of the sequences was performed by using the BLAST algorithm [10]. EBNA2 gene sequences were used to construct phylogenetic tree based on the Neighbour-Joining method by using MEGA 6 (Centre for Evolutionary Medicine and Informatics, Tempe, AZ, USA). The reference strain sequences were obtained from the public database, GenBank [10].

Ethics considerations: This study was laboratory-based with no direct contact with patients. Ethics approval for the study was sought from the University of Zambia Biomedical and Research Ethics Committee (Ethics clearance number: 017-03-14).

Results

Histology: All lymphoma cases were confirmed as either HL or NHL on the basis of different histopathological changes (Figure 1). Of all the tissues examined, 73.3% (110/150) were confirmed as lymphoma cases. Of the 110 lymphomas, 80% (88/110) were identified as NHL, while 20% (22/110) were identified as HL (Figure 2A). NHL affected 55.7% (49/88) males and 44.3% (39/88) females, while HL affected 72.7% (16/22) males and 27.3% (6/22) females (Figure 2 B). In NHL the most affected age group were those aged 31-40 years and 41-50 years age groups (Figure 3 A), while most of the HL cases were mostly in between the ages 0-10 years, followed by the age groups 11-20, 21-30 and 31-40 year age groups (Figure 3 B).

Detection of EBV DNA and subtypes: Both EBV subtype 1 and EBV subtype 2 were detectable (Figure 4 A). The quality of DNA used was assessed by PCR amplification of a 200bp fragment of the human β -actin gene which acted as an internal control for the DNA extraction process (Figure 4 B). Of the lymphomas analysed, EBV DNA was detected in 51.8% (57/110) of the cases (Figure 5 A). Of the 88 NHL cases, 54.5% (48/88) were positive for EBV. Of the 20% (22/110) HL cases, 40.9% (9/22) were EBV positive. Statistical analysis of NHL versus HL, $p=0.252$ (Figure 5 A). In the 48 EBV-positive NHL cases, there were 60.4% (29/48) male patients and 39.6% (19/48) female patients. The difference in the EBV positivity rate between male and female NHL was not statistically significant ($p=0.327$) (Figure 5 B). In the 9 EBV-positive HL cases, there were 77.8% (7/9) of male patients and 22.2% (2/9) female patients. The difference in the EBV positivity rate between male and female HL was also not significant ($p=1.00$) (Figure 5 B). In the positive NHL cases, 81.3% (39/48) were of EBV subtype 1, while 18.8% (9/48) were of EBV subtype 2 (Figure 5 C). For the HL EBV-positive cases, 55.6% (5/9) were of the EBV subtype 1, while 33.3% (3/9) were of the EBV subtype 2 (Figure 5 D). Mixed infection was noted in one case of HL. Phylogenetic analysis revealed that the EBV subtypes were segregated into four groups. The first three groups were for EBV subtype 1, whilst the fourth was for EBV subtype 2 (Figure 6). The strains within groups 1 and 2 were indistinguishable, but showed genetic diversity when the two groups were compared. Group 3 only had one strain, and this strain, when compared to the other two groups, revealed that it was distantly related to the other strains in groups 1 and 2. There was only one sequence for the subtype 2 strain available for the comparison as the other sequences were not obtained due to assay failure. For this subtype minor base differences were mainly observed at positions 36890 (A \rightarrow T), 36891 (C \rightarrow T), 36893 (A \rightarrow C) and 37000 (C \rightarrow T) and 37002(C \rightarrow G) with regard to the subtype 2 reference strain, Ref sLL-2.15.

Detection of HIV-1 in lymphomas: HIV data for the patients was difficult to obtain due to lack of access to patient's records, we only managed for 15 cases of which 4 cases were HIV positive (1 case was EBV type 1 and 3 cases for EBV type 2). Therefore, we decided to find out if any of the remaining lymphoma cases had HIV. After extracting DNA from the formalin fixed paraffin embedded tissue blocks we used Real time-PCR to assess for presence of HIV. None of the 95 lymphoma biopsies indicated HIV integration.

Discussion

The detection of EBV strains in tissue has been useful in studies involving its transmission and persistence [11]. EBV has been closely linked to the pathogenesis of the majority of lymphomas arising in patients with iatrogenic or congenital immunosuppression [12]. Previous studies have shown that detection of EBV in lymphomas may aid in making correct diagnosis and treatment for EBV-associated lymphomas [13]. Data generated from this study indicate that HL was the most commonly diagnosed lymphoma. This was consistent with studies conducted in Nigeria, Japan, Iraq, and India which reported cases ranging from 60% to 84% of NHL [14-17]. NHL is not a single disease, but a complex and diverse group which encompasses more than 65 different subtypes, and this may explain its predominance when compared to HL [6]. Other reasons may be attributed to the prevailing HIV pandemic and an aging world population due to low immunity [18]. The difference in the distribution of lymphomas in different countries shows that both genetic and environmental factors may play a role in the development of lymphomas [19].

Worldwide, the occurrence of NHL and HL has been reported to be higher in males than in females [20] and this mirrored findings in this study. This male preponderance has also been reported in other countries such as Pakistan, Uganda, Nigeria and India [21-24]. Gender-based differences in immune response are known to contribute to differences in lymphoma development. Males lack factors that have a protective role against lymphoma development in comparison to females. The reduced rates among females can be attributed to the direct effects of oestrogen on lymphoma cell proliferation or by its effect on anti-tumour immune response. In addition, pregnancy and the use of oral contraceptives may also contribute to this protective role in females [25]. It was observed that a high incidence of NHL in both sexes was mostly in the 31 to 40 and 41 to 50 year age groups, the latter being similar to findings of an Indian study in which the most affected age group was from 40 to 50 years [26]. However, this was in contrast to findings in a German study which reported NHL to mainly affect individuals who were aged 55 years and above [27]. In our study, NHL seemed to have afflicted a much younger age group as compared to the German study. This may be attributed to the poor socioeconomic conditions and the predominant immunodeficiency states such as HIV infection prevailing in developing countries such as Zambia [28]. However, it was not possible to link these NHL or HL cases to HIV infection as clinical data for the patients was difficult to obtain due to lack of access to patient's records and none of the lymphoma biopsies showed HIV integration by PCR.

It was, however, observed that the age group mostly afflicted by HL was below 30, with highest peak in those aged between 0-20 years. This finding was consistent with studies carried out in Iraqi and Egypt [15, 16]. In the developed world the disease seems to peak in individuals over 60 years of age [29]. This finding seems to suggest that HL occurs at an earlier age in developing countries than in developed countries [30]. This may be attributed to environmental, genetic and racial factors [23]. Increased risk of HL in the young adult population has also been linked to poor childhood socioeconomic status, which is a major problem among the adolescent population in developing countries [31]. The rate of EBV detection in this study was found to be high, and was similar to a Nigerian study which reported 54.5% EBV-positivity in all lymphomas [32]. This can be attributed to a similarity in the types of lymphomas and subtypes evaluated, as well as the extent of immune suppression of the study population [33]. The EBV positivity rate in NHL was slightly higher than that in HL, although the difference was not statistically significant. This corroborated findings in a Chinese study in which the rate of EBV detection in NHL was also higher (42.6%) than that of HL (26.3%), ($p=0.213$) [34]. Despite the fact that many studies confirm a strong association between EBV and lymphomas, the detection of EBV has not produced consistent results due to biological heterogeneity of the virus and diversity of lymphoma subtypes [6, 9].

The detection rate of EBV in HL tissues was observed to be low. This finding was consistent with North American and European findings where EBV expression in HL ranged from 20% to 50% [35, 36]. However, our findings were different from observations in other developing countries such as India, Iran, Nigeria, Egypt and Iraq which reported rates ranging from 60 to 90% [15, 30, 37-39]. This difference may be attributed to the fact that the association between EBV infection and HL depends on the geographical location, age, subtype of HL, and the extent of immunosuppression of the study population [39]. A single case of EBV infection (i.e. subtype 1 and 2) was detected, and this was similar to findings in a Spanish study which reported two cases of HL to have mixed infection [40]. Dual infection could reflect immune dysfunction with HIV being a cofactor in the process [40]. However, it was not

possible to link this finding to HIV infection as clinical data for the patients was difficult to obtain due to lack of access to patient's records. The rate of EBV positivity for NHL cases in this study was similar to those reported in Brazil, Uganda and Nigeria, which reported rates from 54.5% to 79.8% [9, 22, 32]. This similarity can be ascribed to the anatomical site or types of lymphomas evaluated [33]. The rate of EBV in lymphomas is also dependent on the overall rate of EBV infection in a specific geographical region. For instance, in an Egyptian study, 90% of the EBV-positive cases in lymphomas of head and neck were ascribed to the high frequency of EBV infection in the general Egyptian population [41]. However, the findings in this study are in contrast to those reported in an Iranian study which reported a low rate of EBV in NHL (10%) [33]. This can be attributed to the low prevalence of EBV infection in this population.

There were no significant differences in terms of gender and EBV association. This corroborated studies conducted in China and Uganda [22, 34]. This is not surprising since it is known that EBV is acquired mainly by intimate contact and more than 90% of the world's population carry EBV as a lifelong asymptomatic infection of B lymphocytes [42]. The predominant subtype of EBV detected in both NHL and HL was subtype 1. This finding was consistent with findings reported in Brazilian and Chinese studies [9, 43]. However, studies conducted in Turkey and Mexico showed that EBV-2 was the predominant subtype [44, 45]. EBV subtype-2 infection has been described to be more prevalent in immunocompromised patients in Western populations, particularly in immunoblastic lymphomas arising in HIV-positive homosexual patients [46]. This difference in the prevalence of the two EBV subtypes can be attributed to the differences in their oncogenicity and the extent of immune suppression of the study population [47].

Phylogenetic analysis revealed that there were four groups of the EBV strains. The first three groups belonged to the EBV subtype 1 category, whilst the fourth one was for EBV subtype 2. The strains within each of group 1 and 2 were indistinguishable from each other. However, there were some major genetic differences between the strains in the two groups. The single strain in group 3, when compared with the other subtype 1 strains, showed it was not closely related to those in the other groups. These findings corroborate those in a Kenyan study [48]. This suggests that inter and intra-genetic variations in EBV genomes exist, and that within a geographical region different EBV genetic strains can coexist [48, 49]. However, a study conducted in the United Kingdom, which examined EBV strains from different geographical locations, showed that strains from the same region clustered together as opposed to those from different regions [49]. This is attributed to genetic differences in the strains circulating in different geographical locations [50]. The single strain in group 4 was the only one amplifiable from the subtype 2 category. The other sequences were not obtained due to assay failure, and thus it was only available for comparison. When compared to the reference strain, three-base pair differences were observed. This genetic similarity was interesting in that the reference, obtained from GenBank, from originally isolated strain from the United Kingdom. This may suggest that the two strains may have common ancestry. A similar study conducted in Japan also detected only a single case of EBV subtype 2 strain with no mutations when compared to the reference strain [51].

Conclusion

The study demonstrated that EBV was detectable in the majority of the lymphomas analysed, the rate of detection being higher in NHL

than in HL. Therefore, providing evidence for the presence of the virus in lymphoma tissues will aid in targeted therapy. The predominant EBV subtype detected was subtype 1. Phylogenetic analysis of EBV strains revealed genetic diversity amongst EBV type 1, and that the EBV type 2 strain detected showed close genetic relatedness to the reference strain. It may, therefore, be of interest to target EBV during lymphoma diagnosis as this may lead to improved patient outcomes during treatment.

What is known about this topic

- Studies have shown that EBV is associated with several malignancies including lymphomas. The most common type being EBV type 1.

What this study adds

- This study provides evidence for the presence of EBV in lymphomas diagnosed at the University Teaching Hospital in Lusaka, Zambia.

Competing interests

The authors declare no competing interests.

Authors' contributions

Doris Kafita, Geoffrey Kwenda, Trevor Kaile were involved in designing the study, participated in data analysis, interpretation, drafted and finalized the manuscript. Evans Malyangu, Rabecca Tembo, Chrispin Chisanga, Mulemba Samutela, Annie Kalonda, Ephraim Zulu and Pascal Polepole were involved in the acquisition of data, analysis and interpretation. All authors have and agreed to the final manuscript.

Acknowledgments

This project was supported by grant # 5R24TW008873 administrated by the Fogarty International Center of the National Institutes of Health and funded by OGAC and OAR. This work was also funded by the University of Zambia Staff Development Office. We thank our colleagues at the Histopathology laboratory, University Teaching Hospital and the Department of Biomedical Sciences, School of Medicine, University of Zambia.

Figures

Figure 1: Histopathological features of lymphomas after H and E staining: A) features seen in Burkitt's lymphoma, a NHL, were presence of histiocytes with phagocytosis of nuclear debris, accumulated cellular debris due to increased apoptosis, starry-sky pattern; B) features seen in lymphocyte predominance a HL, included inflammatory cell infiltrate composed of abundant eosinophils, plasma cells, and Reed-Sternberg cell; (Adapted from the University Teaching Hospital- Histopathology Laboratory)

Figure 2: Histological diagnosis of lymphomas and gender distribution: A) total detection of lymphomas and distribution in each type of lymphoma; B) gender distribution in each type of lymphoma

Figure 3: Age distribution in lymphomas: A) NHL cases; B) HL cases

Figure 4: A) EBV detection and subtyping targeting the EBNA 3C region; Lane 1, 50bp DNA marker; lane 2, negative control, lane 3 and 4, positive controls for type 2 and type 1, respectively; lanes 5-12 EBV-positive representative samples; B) actin internal control on selected samples. Lane 1, 50bp DNA marker; lane 2, Negative control; lane 3 and 4, positive controls for type 2 and type 1, respectively; lanes 5-12 representative samples

Figure 5: Distribution of EBV positive cases and subtypes: A) EBV DNA detection in all lymphomas and in each subtype of lymphoma; B) distribution of lymphoma cases by gender and EBV-positivity results; C) distribution of EBV subtypes in NHL cases; D) distribution of EBV subtypes in HL cases

Figure 6: Phylogenetic tree of EBV based on the Neighbour-Joining method. Ref sLCL-IS1.10 is the reference sequence for EBV type 1, while Ref SLCL-2.15 is the reference sequence for EBV type 2

References

1. Schafer G, Blumenthal MJ, Katz AA. Interaction of Human Tumour Viruses with Host Cell Surface Receptors and Cell Entry. *Viruses*. 2015; 7(5):2592-2617. **PubMed | Google Scholar**
2. Rickinson AB, Kieff ED. Epstein-Barr virus In: Knipe DM, Griffin DE, Lamb RA, Martin MA, Roizman B, Straus SE, Fields Virology; Fifth ed. Knipe D, Howley P, Eds; Lippincott, Williams and Wilkins. Philadelphia, PA, USA, 2007; pp 2655-2700.
3. Rickinson AB. Co-infections, inflammation and oncogenesis: future directions for EBV research. *Semin Cancer Biol*. 2014; 26:99-115. **PubMed | Google Scholar**
4. Kimura H, Kawada J, Ito Y. Epstein-Barr virus- associated lymphoid malignancies: the expanding spectrum of Hematopoietic neoplasms. *Nagoya J Med Sci*. 2013; 75(3-4): 169-179. **PubMed | Google Scholar**
5. Tzellos S, Farrell PJ. Epstein-Barr virus Sequence Variation-Biology and Disease. *Pathogens*. 2012; 1(2):156-175. **PubMed | Google Scholar**
6. Ishtiaq S, Hassan U, Mushtaq S, Akhtar N. Determination of Frequency of Epstein - Barr virus in Non- Hodgkin Lymphomas Using EBV Latent Membrane Protein 1 (EBV-LMP1) Immunohistochemical Staining. *Asian Pac J Cancer Prev*. 2013; 14(6):3963-3967. **PubMed | Google Scholar**
7. Fan H, Kim SC, Chima CO, Israel BF, Lawless KM, Eagan PA, Elmore S, Moore DT, Schichman SA, Swinnen LJ, Gulley ML. Epstein-Barr Viral Load as a Marker of Lymphoma in AIDS Patients. *J Med Virol*. 2005; 75(1):59-69. **PubMed | Google Scholar**
8. Saeed MS. Epstein-Barr virus in Hodgkin's lymphoma-immunohistochemical case series study. *Ann Coll Med*. 2009; 35(2):93-103. **Google Scholar**
9. Hassan R, White LR, Claudio G, Stefanoff CG, de Oliveira DE, Felisbino FE, Klumb CE, Bacchi CE, Seuánez HN, Zalberg IR. Epstein - Barr virus (EBV) detection and typing by PCR: a contribution to diagnostic screening of EBV-positive Burkitt's lymphoma. *Diagn Pathol*. 2006; 1(1):17. **Google Scholar**

10. United State National Library of Medicine. **Standard Nucleotide BLAST**. Accessed janvier 2017
11. Dojcinov SD, Venkataraman G, Pittaluga G, Wlodarska I, Schragger JA, Raffeld M, Hills RK, Jaffe ES. Age-related EBV-associated lymphoproliferative disorders in the Western population: a spectrum of reactive lymphoid hyperplasia and lymphoma. *Blood*. 2011; 117(18):4726-4735. **PubMed | Google Scholar**
12. Cohen JI. Epstein-Barr virus vaccines. *Clin Transl Immunology*. 2015; 4(1): e32. **PubMed | Google Scholar**
13. Qi Z, Han X, Hu J, Wang G, Gao J, Wang X, Liang D. Comparison of three methods for the detection of Epstein-Barr virus in Hodgkin's lymphoma in paraffin-embedded tissues. *Mol Med Rep*. 2013; 7(1):89-92. **PubMed | Google Scholar**
14. Aoki R, Karube K, Sugita Y, Nomura Y, Shimizu K, Kimura Y, Hashikawa K, Suefuji N, Kikuchi M, Ohshima K. Distribution of malignant lymphoma in japan: analysis of 2260 cases, 2001-2006. *Pathol Int*. 2008; 58(3):174-182. **PubMed | Google Scholar**
15. Audouin J, Diebold J, Nathwani B, Ishak E, MacLennan K, Mueller-Hermelink HK, Armitage JO, Weisenburger DD. Epstein-Barr virus and Hodgkin's lymphoma in Cairo, Egypt. *J Hematop*. 2010; 3(1):11-18. **PubMed | Google Scholar**
16. Yaqo RT, Hughson MD, Sulayvani FK, Al-Allawi NA. Malignant lymphoma in Northern Iraq: a retrospective analysis of 270 cases according to the world health organisation classification. *Indian J Cancer*. 2011; 48(4):446-451. **PubMed | Google Scholar**
17. Mondal SK, Mandal PK, Samanta TK, Chakaborty S, Roy SD, Roy S. Malignant lymphoma in Eastern India: a retrospective analysis of 455 cases according to World Health Organisation classification. *Indian J Med Paediatr Oncol*. 2013; 34(4):242-246. **PubMed | Google Scholar**
18. Corti M, Villafane M, Bistmans, Narbaitz M, Gilardi. Primary Extranodal Non-Hodgkin Lymphoma of the Head and Neck in Patients with Acquired Immunodeficiency Syndrome: a Clinicopathologic Study of 24 Patients in a single Hospital of infectious Diseases in Argentina. *Int Arch of Otorhinolaryngol*. 2014; 18(3):260-265. **PubMed | Google Scholar**
19. Sun W, Kimball A, Xu Y, Brutkiewicz R, Strome S, Webb T. Mantle Cell Lymphoma Induced Reduction of Human NKT cells. *J Immunol*. 2012; 188(1 supplement):162-25. **Google Scholar**
20. Yeole BB. Trends in the Incidence of Non-Hodgkin's Lymphoma in India. *Asian Pac J Cancer Prev*. 2008; 9(3):433-436. **PubMed | Google Scholar**
21. Mushtaq S, Akhtar N, Jamal S, Mamoon N, Khadim T, Sarfaraz T, Waqar A. Malignant Lymphomas in Pakistan According to WHO Classification of Lymphoid Neoplasms. *Asian Pac J Cancer Prev*. 2008; 9(2):229-232. **PubMed | Google Scholar**
22. Tumwine LK, Orem J, Kerchan P, Byarugaba W, Pileri SA. EBV, HHV8 and HIV in B cell non Hodgkin lymphoma in Kampala, Uganda. *Infect Agent Cancer*. 2010; 5(1):12. **PubMed | Google Scholar**
23. Olu-Edo A, Omoti CE. Hodgkin lymphoma: Clinicopathologic features in Benin City, Nigeria and update on its biology and classification. *Niger J of Clin Pract*. 2011; 14(4):440-444. **Google Scholar**
24. Sharma M, Mannan R, Madhukar M, Navani S, Manjari M, Bhasin TS, Gill SK. Immunohistochemical (IHC) Analysis of Non-Hodgkin's Lymphoma spectrum According to WHO/REAL Classification: a single Centre Experience from Punjab, India. *J Clin Diagn Res*. 2014; 8(1):46-49. **PubMed | Google Scholar**
25. Horesh N, Horowitz NA. Does Gender Matter in Non-Hodgkin Lymphoma? Differences in Epidemiology, Clinical Behaviour and Therapy. *Rambam Maimonides Med J*. 2014; 5(4):e0038. **PubMed | Google Scholar**
26. Padhi S, Paul TR, Challa S, Prayaga AK, Rajappa S, Raghunadharao D, Sarangi R. Primary Extra Nodal Non Hodgkin Lymphoma: a 5 Year Retrospective Analysis. *Asian Pac J Cancer Prev*. 2012; 13(10):4889-4895. **PubMed | Google Scholar**
27. Muller AM, Ihorst G, Mertelsmann R, Engelhardt M. Epidemiology of non-Hodgkin Lymphoma (NHL): trends, geographic distribution, and aetiology. *Ann Haematol*. 2005; 84(1):1-12. **Google Scholar**
28. Makar RR, Saji T, Junaid TA. Epstein-Barr virus Expression in Hodgkin's Lymphoma in Kuwait. *Pathol and Oncol Res*. 2003; 9(3):159. **PubMed | Google Scholar**
29. Cartwright RA, Watkins G. Epidemiology of Hodgkin's disease: a review. *Haematol Oncol*. 2004; 22(1):11-26. **PubMed | Google Scholar**
30. Al-Mudallal, Al-Sinjery. Immunohistochemical Expression of Epstein - Barr virus Antigen Latent Membrane Protein-1 and Bcl-2 in Classical Hodgkin Lymphoma. *Iraqi J Med Sci*. 2012; 10(3):234-242. **Google Scholar**
31. Maggioncalda A, Malik N, Shenoy P, Smith M, Sinha R, Flowers CR. Clinical, Molecular, and Environmental Risk Factors for Hodgkin Lymphoma. *Adv Haematol*. 2011; 2011:1-10. **PubMed | Google Scholar**
32. Iliyasu Y, Ayers LW, Liman AA, Waziri GD, Shehu SM. Epstein-Barr virus association with malignant lymphoma subgroups in Zaria, Nigeria. *Niger J Surg Sci*. 2014; 23(1):6-8. **PubMed | Google Scholar**
33. Ashraf MJ, Makarempour A, Monabati A, Azapira N, Khademi B, Hakimzadeh A, Abedi E, Valibeigi B. Comparison between presence of EpsteinBarr virus in nodal and extra nodal diffuse large B cell lymphoma of head and neck, an Iranian experience. *Iran Red Crescent Med J*. 2012; 14(12):764-770. **Google Scholar**
34. Zhang Y, Peng J, Tang Y, He J, Peng J, Zhao Q, He R, Peng X, Gan R. The prevalence of Epstein - Barr virus Infection in Different types and sites of Lymphomas. *J Infect Dis*. 2010; 63(2):132-135. **PubMed | Google Scholar**
35. Chang ET, Zheng T, Lennette ET, Weir EG, Borowitz M, Mann R, Spiegelman D, Mueller NE. Heterogeneity of risk factors and antibody profiles in Epstein-Barr virus genome positive and negative Hodgkin lymphoma. *J Infect Dis*. 2004; 189(12):2271-2281. **PubMed | Google Scholar**

36. Diepstra A, Imhoff GW, Schaapveld M, Karim-Kos H, Van den Berg A, Poppema S Latent Epstein-Barr virus infection of tumor cells in classical Hodgkin's lymphoma predicts adverse outcome in older adult patients. *J Clin Oncol.* 2009; 27(23):3815-3821. **PubMed | Google Scholar**
37. Karnik S, Srinivasan B, Nair S. Hodgkin's lymphoma immunohistochemical features and its association with EBV LMP-1: experience from a Souths Indian hospital. *Pathology.* 2003; 35(3): 207-211. **PubMed | Google Scholar**
38. Katebi M, Sharifi N, Tarhini M, Otrock ZK, Bazarbachi A, Kchour G. Frequency of Epstein-Barr virus expression in various histological subtypes of Hodgkin lymphoma. *Histopathology.* 2008; 52(6):775-776. **PubMed | Google Scholar**
39. Adelusola KA, Titiloye NA, Rotimi O. Epstein-Barr virus latent membrane protein-1 in Hodgkins Lymphoma in Nigerians. *Afr Health Sci.* 2009; 9(3):174-178. **PubMed | Google Scholar**
40. García-Cosío M, Santón A, Martín P, Reguero ME, Cristóbal E, Bellas C. Analysis of Epstein-Barr virus strains and variants in classical Hodgkin's lymphoma by laser microdissection. *Histol Histopathol.* 2008; 23(2):209-217. **PubMed | Google Scholar**
41. Bahnassy AA, Zekri AR, Asaad N, El-Houssini S, Khalid HM, Sedky LM, Mokhtar NM. Epstein-Barr viral infection in extranodal lymphoma of head and neck: correlation with prognosis and response to treatment. *Histopathology.* 2006; 48(5):516-528. **PubMed | Google Scholar**
42. Irshaid F, Jaran A, Dilmi F, Tarawneh K, Hadeth R, and Al-Khatib A. Prevalence of Epstein-Barr Virus Latent Membrane Protein-1 in Jordanian Patient with Hodgkin's Lymphoma and Non-Hodgkin's Lymphoma. *J Biol Sci.* 2010; 10(6):507-513. **Google Scholar**
43. Ai J, Xie, Liu C, Huang Z, Xu J. Analysis of EBNA-1 and LMP-1 variants in diseases associated with EBV infection in Chinese children. *Virology.* 2012; 9(1):13. **PubMed | Google Scholar**
44. Tinguely M, Bründler M, Gögüs S, Kerl K, Bo B. Epstein-Barr Virus Association in Pediatric Abdominal Non-Hodgkin Lymphomas from Turkey. *Arch Immunol Ther Exp (Warsz).* 2000; 48(4):317-322. **PubMed | Google Scholar**
45. Palma I, Sánchez AE, Jiménez-Hernández E, Alvarez-Rodríguez F, Nava-Frias M, Valencia-Mayoral P, Salinas-Lara C, Velazquez-Guadarrama N, Portilla-Aguilar J, Pena RY, Ramos-Salazar P. Detection of Epstein-Barr virus and genotyping based on EBNA2 protein in Mexican patients With Hodgkin lymphoma: a comparative study in children and adults. *Clin Lymphoma Myeloma Leuk.* 2013; 13(3):266-272. **PubMed | Google Scholar**
46. Yao QY, Croom-Carter DS, Tierney RJ, Habeshaw G, Wilde JT, Hill FG, Conlon C, Rickinson AB. Epidemiology of infection with Epstein-Barr-virus types 1 and 2: Lessons from the study of a T-cell-immunocompromised hemophilic cohort. *J Virol.* 1998; 72(5):4352-4363. **PubMed | Google Scholar**
47. Ibrahim AH, Menasce LP, Pomplun S, Burke M, Bower M, Naresh KN. Epstein-Barr virus (EBV) genotypes among human immunodeficiency virus (HIV)-related B-cell Lymphomas and B-cell post-transplant lymphoproliferative disorders (B-PTLD)-late-onset lymphomas, especially in the HIV setting, are associated with type-B-EBV. *Eur J Haematol.* 2010; 85(3):227-230. **Google Scholar**
48. Simbiri KO, Smith NA, Otieno R, Wohlford E, Daud II, Odaba SP, Middleton F, Rochford R. Epstein-Barr virus Genetic Variation in Lymphoblastoid Cell Lines Derived from Kenyan Paediatric population. *PLoS One.* 2015; 10(5):e0125420. **Google Scholar**
49. Palser AL, Grayson NE, White RE, Corton C, Correlá S, Ba Abdullah MM, Watson SJ, Cotten M, Arrand JR, Murray PG, Allday MJ, Rickinson AB, Young LS, Farrel PJ, Kellam P. Genome Diversity of Epstein-Barr virus from Multiple Tumour Types and Normal Infection. *J Virol.* 2015; 89(10):5222-5237. **PubMed | Google Scholar**
50. Renzette N, Somasundaran M, Brewster F, Coderre J, Weiss ER, McManus M, Greenough T, Tabak B, Garber M, Kowalik TF, Luzuriaga K. Epstein-Barr virus Latent Membrane Protein 1 Genetic Variability in Peripheral Blood B cells and Oropharyngeal Fluids. *J Virol.* 2014; 88(7):3744-3755. **PubMed | Google Scholar**
51. Higa M, Kinjo T, Kamiyama K, Iwamasa T, Hamada T, Iyama K. Epstein-Barr virus (EBV) subtype in EBV related oral squamous cell carcinoma in Okinawa, a subtropical island in southern Japan, compared with Kitakyushu and Kumamoto in mainland Japan. *J Clin Pathol.* 2002; 55(6):414-423. **PubMed | Google Scholar**

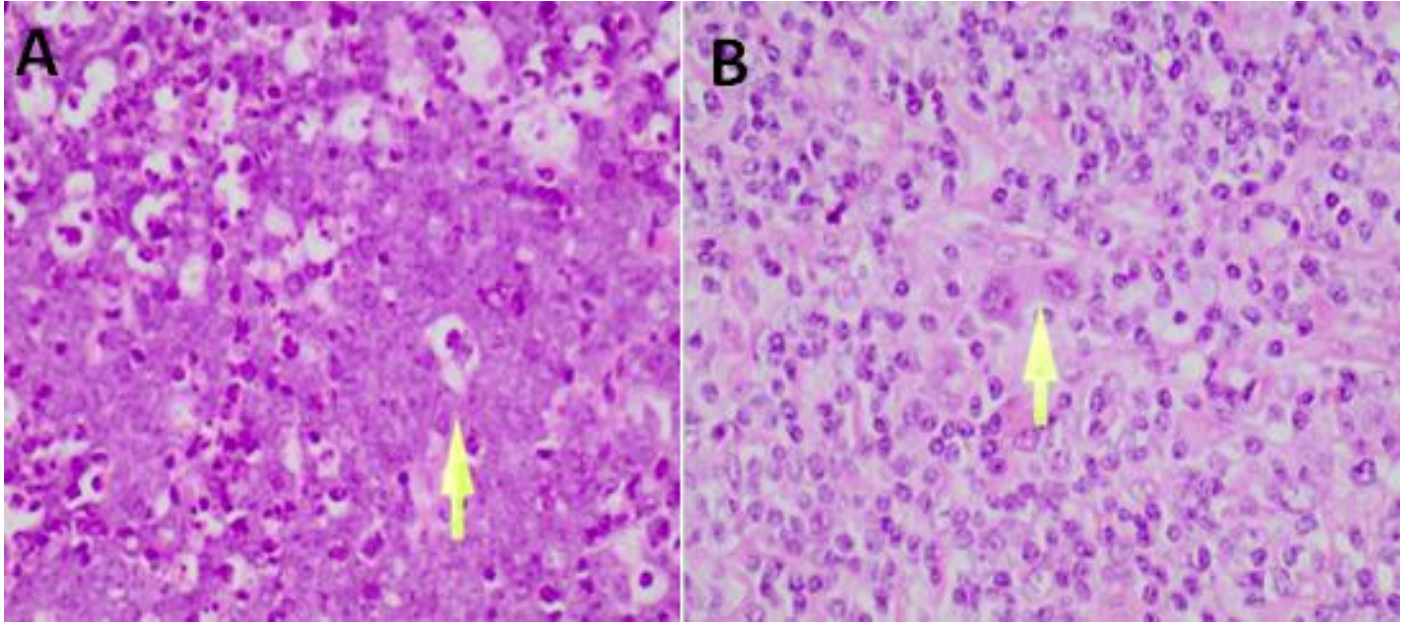


Figure 1: Histopathological features of lymphomas after H and E staining: A) features seen in Burkitt's lymphoma, a NHL, were presence of histiocytes with phagocytosis of nuclear debris, accumulated cellular debris due to increased apoptosis, starry-sky pattern; B) features seen in lymphocyte predominance a HL, included inflammatory cell infiltrate composed of abundant eosinophils, plasma cells, and Reed-Sternberg cell; (Adapted from the University Teaching Hospital- Histopathology Laboratory)

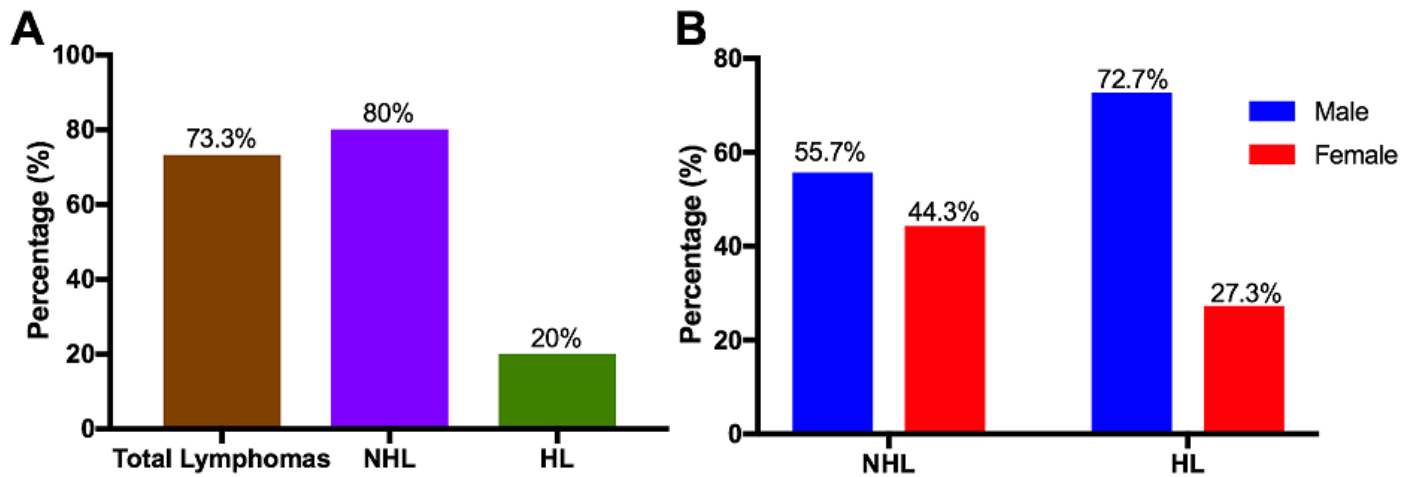


Figure 2: Histological diagnosis of lymphomas and gender distribution: A) total detection of lymphomas and distribution in each type of lymphoma; B) gender distribution in each type of lymphoma

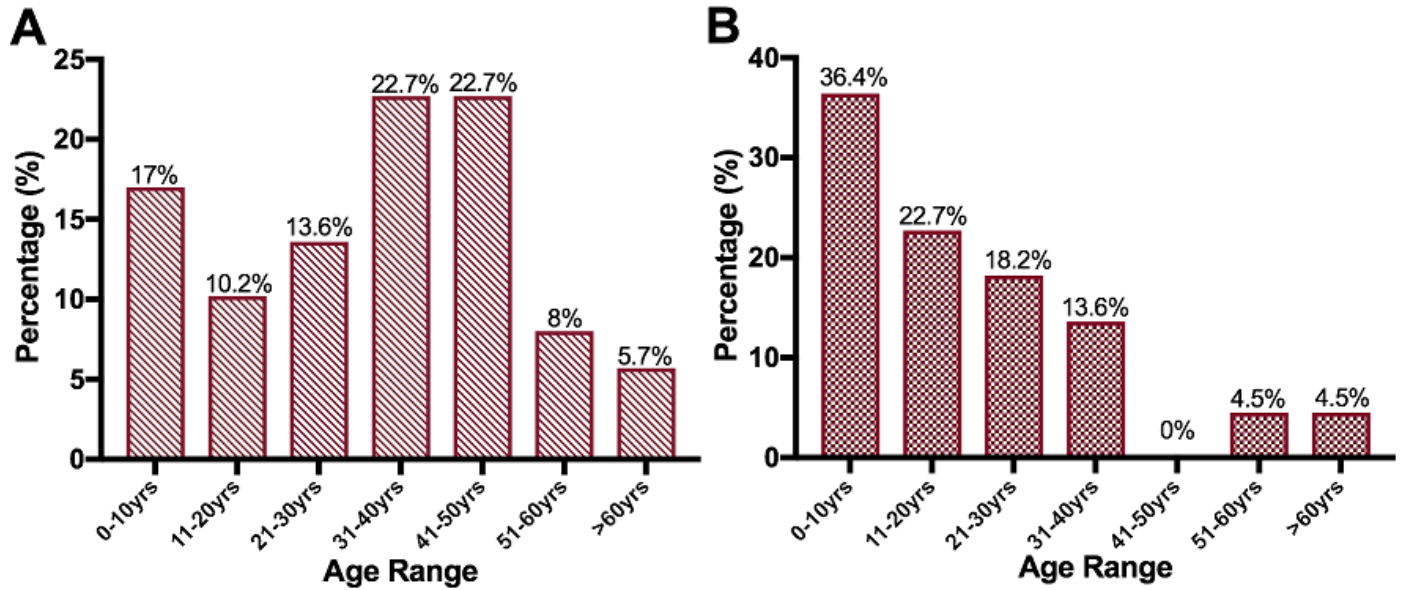


Figure 3: Age distribution in lymphomas: A) NHL cases; B) HL cases

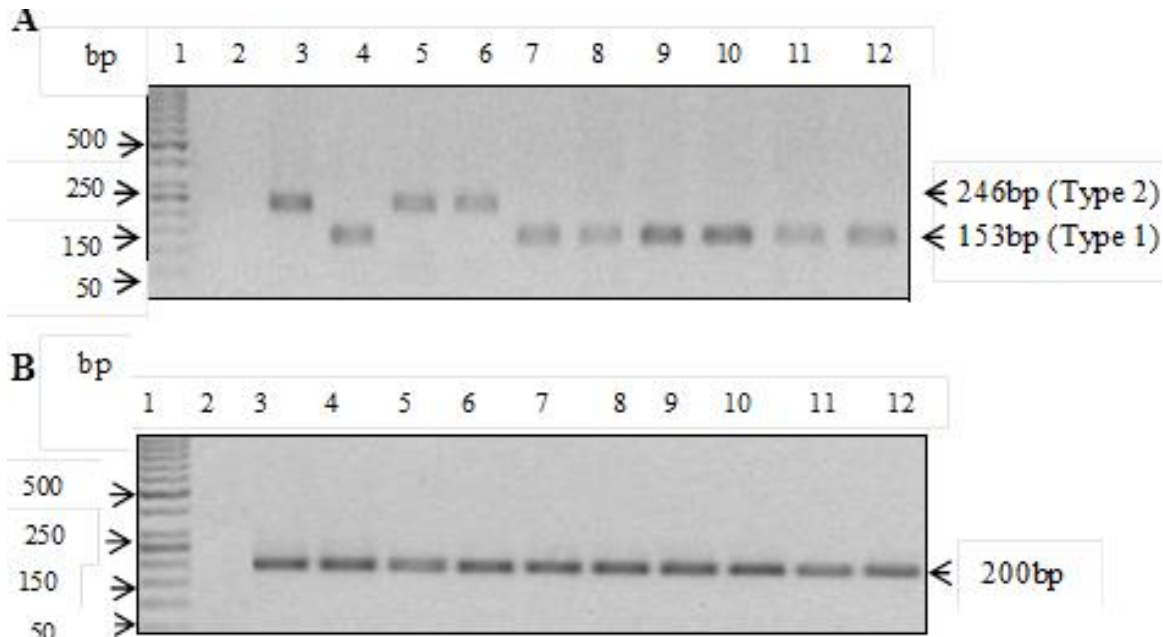


Figure 4: A) EBV detection and subtyping targeting the EBNA 3C region; Lane 1, 50bp DNA marker; lane 2, negative control, lane 3 and 4, positive controls for type 2 and type 1, respectively; lanes 5-12 EBV-positive representative samples; B) actin internal control on selected samples. Lane 1, 50bp DNA marker; lane 2, Negative control; lane 3 and 4, positive controls for type 2 and type 1, respectively; lanes 5-12 representative samples

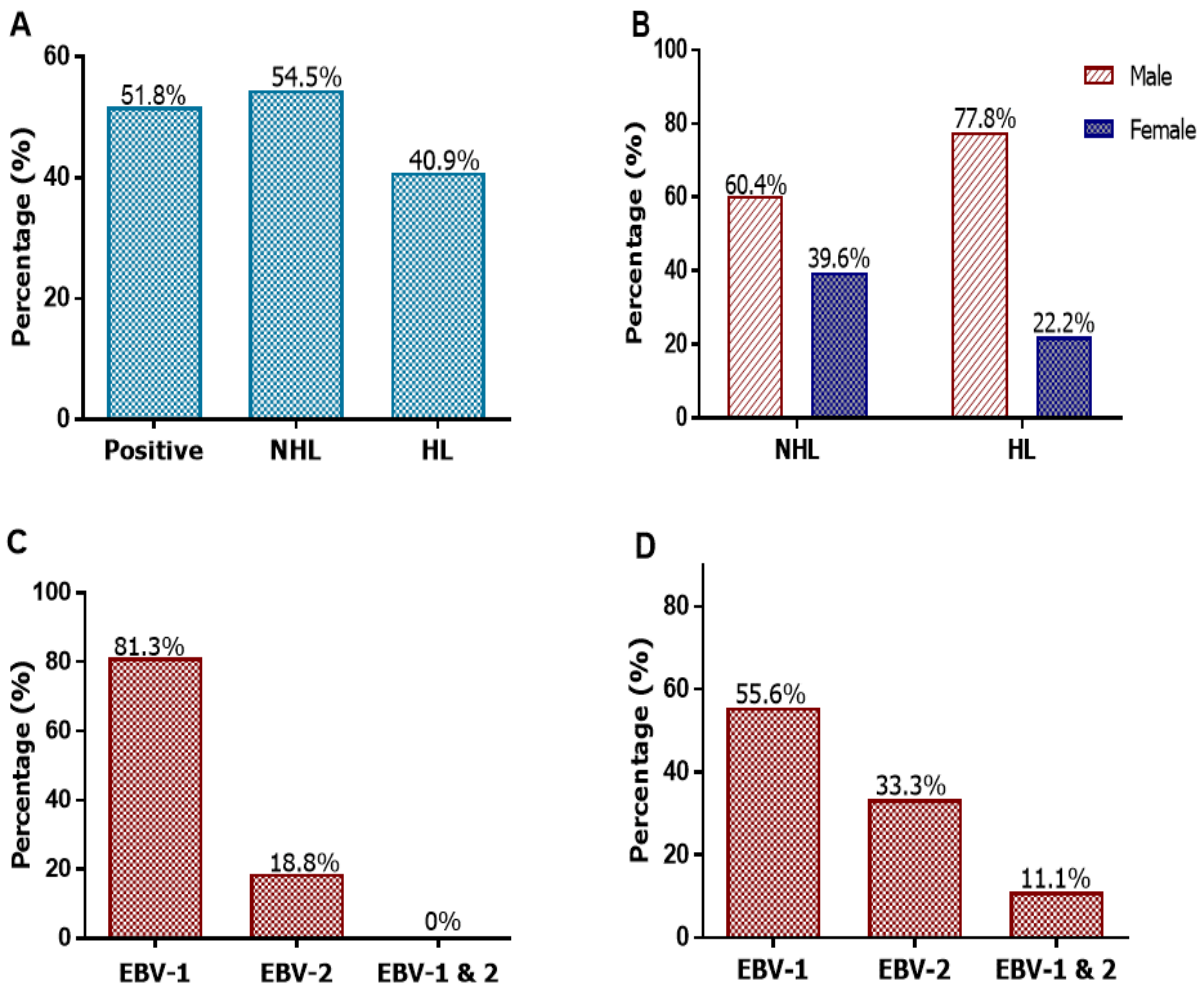


Figure 5: Distribution of EBV positive cases and subtypes: A) EBV DNA detection in all lymphomas and in each subtype of lymphoma; B) distribution of lymphoma cases by gender and EBV-positivity results; C) distribution of EBV subtypes in NHL cases; D) distribution of EBV subtypes in HL cases

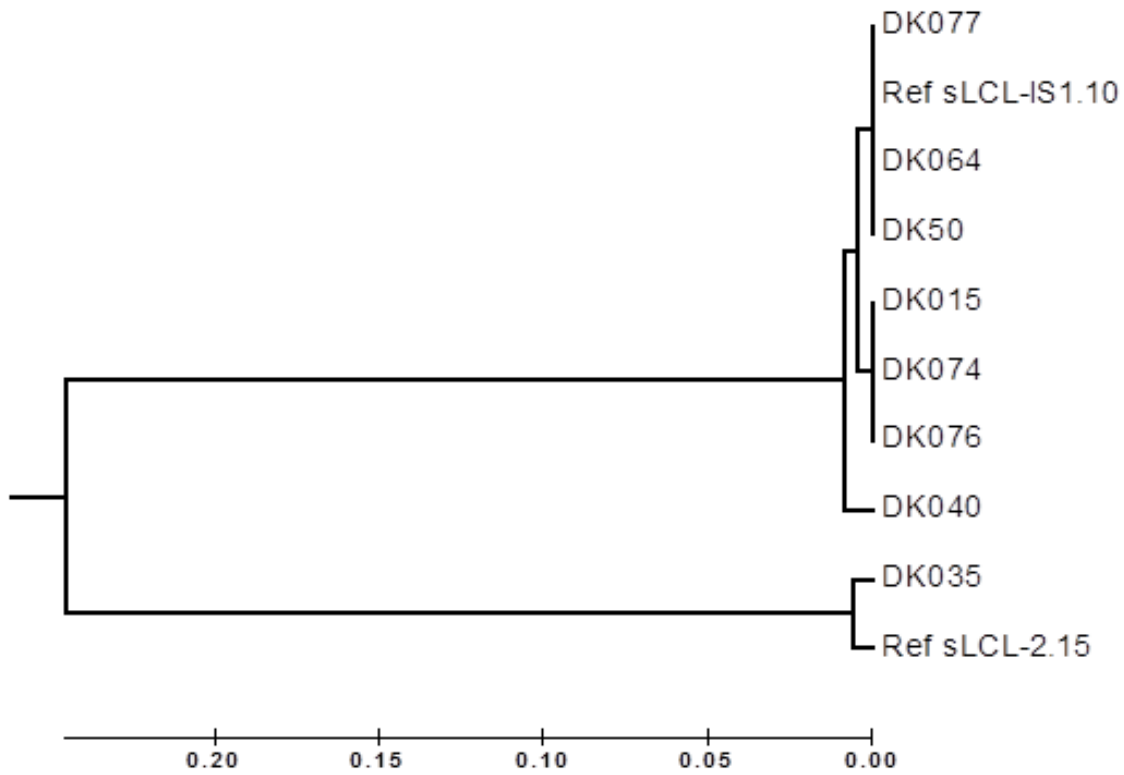


Figure 6: Phylogenetic tree of EBV based on the Neighbour-Joining method. Ref sLCL-IS1.10 is the reference sequence for EBV type 1, while Ref SLCL-2.15 is the reference sequence for EBV type 2