

Validation of Siriraj Stroke Scoring System in the Clinical Differentiation of Stroke Sub-types in a resource-limited Setting

Halimat Hassan Amin¹, Farouk Kabir Umar²

¹Department of Internal Medicine Usmanu Danfodiyo University Teaching Hospital Sokoto, Nigeria.

²Department of Radiology, Usmanu Danfodiyo University Teaching Hospital Sokoto, Nigeria.

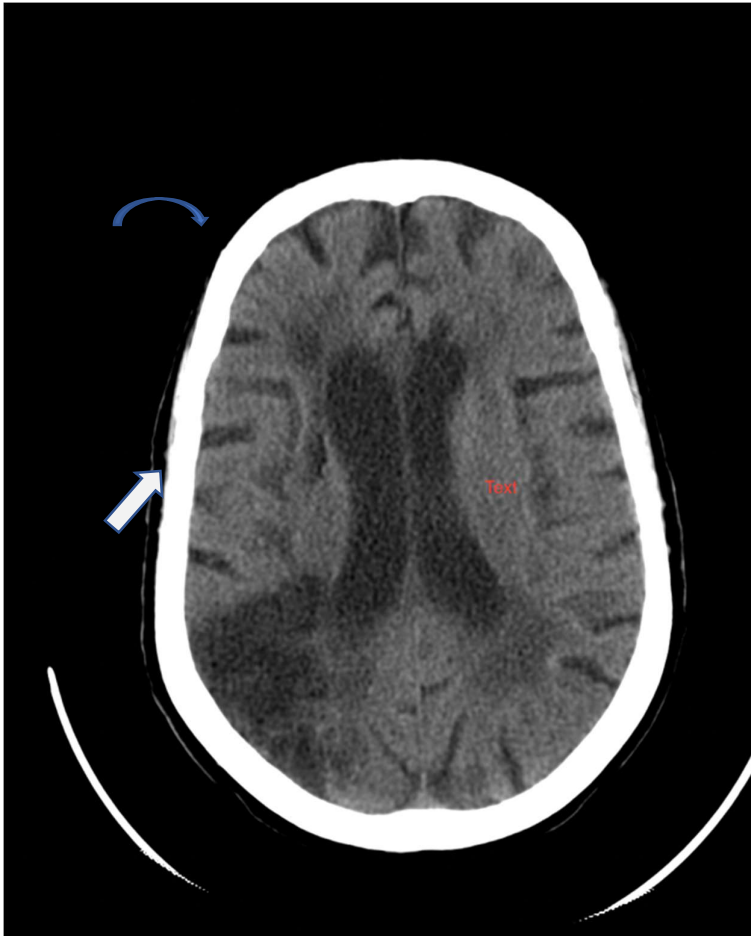


Fig. 2. Axial brain CT image of a 55-year-old male patient, showing a wedge-shaped non-enhancing hypodense area (Straight arrow) in the right parieto-occipital lobes in keeping with chronic infarction (Ischemic stroke). A similar but smaller lesion is also noted in the ipsilateral frontal lobe (Curved blue arrow).