



# PERFORMANCE ANALYSIS OF GSM NETWORKS IN MINNA METROPOLIS OF NIGERIA

A. Ozovehe<sup>1,\*</sup> and A. U. Usman<sup>2</sup>

<sup>1</sup> TRIFIELD TECHNOLOGY LIMITED, 14 ISHAQ MAAJI CRESCENT, GWAGWALADA ABUJA, NIGERIA

<sup>2</sup> DEPT. OF ELECTRICAL AND ELECTRONICS ENGINEERING, FEDERAL UNIVERSITY OF TECHNOLOGY, MINNA, NIGERIA.

*E-mail addresses:*<sup>1</sup> [aliyu123oz@gmail.com](mailto:aliyu123oz@gmail.com)<sup>2</sup> [abrausman@yahoo.com](mailto:abrausman@yahoo.com)

## ABSTRACT

*The performance of a cellular network is assessed in terms of key performance indicators (KPI) based on statistics generated from drive tests or network management systems. However, drive tests give the 'feel' of the designed network as it is experienced by the subscribers. Therefore, it is used in this study to compare performance of GSM operator networks (W, X, Y and Z) in Minna, Niger State, Nigeria. Transmission Environmental Monitoring System (TEMS) drive test tools were used to collect Log files from the live GSM networks. X network was found to have the best performance from the analysis which was based on target KPIs defined by Nigerian Communications Commission (NCC). All the networks suffered one type of degradation or the other in terms of the KPIs. The research then suggested the required physical optimization measures such as swapping of RF antenna cables, azimuth adjustment and retune of broadcast control channel (BCCH) frequencies in order to resolve the problems identified on W network in this study.*

**Keywords:** GSM Network, Drive Test, KPI and Radio Frequency Network Optimization

## 1. INTRODUCTION

Wireless mobile communication system has grown from the first generation (1G) of analogue system, through the second generation (2G) of digital system to the ever maturing third generation (3G) high speed multiple service system [1] and has transformed the ease of communication the world over. However, the widespread use of mobile communications has heightened consumer demand for better quality service. Thus, network operators the world over, face the challenges of improving the quality of service while increasing capacity and rolling out new services as they provide wider coverage at the same time had lead to 4G (fourth generation) as the fourth generation of mobile telecommunications technology, succeeding 3G and preceding 5G (fifth generation) and 6G (sixth generation). A 4G system support applications like amended mobile web access, IP telephony, gaming services, high-definition mobile TV, video conferencing, 3D television, and cloud computing in addition to the usual voice and other services of 3G. Two 4G candidate systems are

commercially deployed: the Mobile WiMAX and Long Term Evolution (LTE) [8].

Performance and quality of service (QoS) evaluation are the most important to the mobile operators as the revenue generation and customer satisfaction are directly related to network performance and quality. The Network needs to be under continuous monitoring and control to maintain and improve the performance of the system [2]. Usually, statistics generated from drive tests or network management systems are used to unravel network problems and provide useful recommendations to resolve them. This process called radio frequency (RF) optimization is continuously required as the network evolves. Through RF Optimization, the quality of service and usage of the network resources are greatly improved and the balance between coverage and capacity is achieved using existing network resources. In some cases, upgrading of existing resources or additional resources may be required to meet the ever increasing demands for QoS [3, 4].

Drive test trial is the most common way to analyze cellular network performance as it provides

subscriber perspective to the service provider. The trial basically collect measurement data from a live network with the sole aim of analyzing and evaluating the test result so as to undertake possible network optimization for performance improvement [3], and in this work TEMS (Test Mobile System) equipment was used to investigate: non-working transceivers (TRXs); inactive radio network features like frequency hopping; overshooting sites coverage overlaps; coverage holes; carrier-to-interference (C/I) analysis; high Interference spots; poor handover; accessibility and retainability of the network etceteras.

This work is an effort to compare the performance of various GSM operator network in Minna Metropolis. This is done with network performance metrics obtained from drive test log files. This work also helps to validate the claim made by the NCC QoS audit report which said that X has the best network quality nationwide [5] as obtained from network operating centre (NOC) statistics.

More in-depth analysis was made on X network and based on our findings; possible steps to improve this network are made.

## 2. GSM KEY PERFORMANCE INDICATOR

The performance of cellular radio networks can be measured using different KPIs. For effective radio network optimization, it is necessary to pre-select relevant KPIs to focus on, and observe closely when the network monitoring process is going on.

The most important of the KPIs from the operator's perspective as described in [6] include bit error rate (BER), frame erasure rate (FER), bit error probability (BEP) and mean opinion score (MOS). However, the main KPIs that are used by NCC for rating the quality of service of cellular networks in Nigeria [5] are:

- i. **Call setup success rate (CSSR)** - this indicator measures the ease with which calls are established or setup. The higher the value, the easier it is to set up a call. High call setup success rate is achieved when standalone dedicated control channel (SDCCH) seizures and traffic channel (TCH) allocation are easily achieved to set up a call. It is calculated as number of the unblocked call attempts divided by the total number of call attempts.
- ii. **Call drop rate (CDR)** - this indicator, also called Drop Call Rate (DCR) measures the network ability to retain call conversation when it has been established or setup. A dropped call is a call that is prematurely terminated before being

released normally by either the caller or the callee. Dropped calls can be caused by degraded signal quality around the vicinity of a mobile phone, interference, unsuccessful handover attempt to neighbor cells, hardware faults and coverage issues. A value of 3% means that out of every 100 calls established only 3 will drop before any of the calling parties voluntarily terminate the call. It is calculated as the number of dropped calls divided by the total number of call attempts.

- iii. **SDCCH congestion rate** - this indicator measures the availability of signaling capacity to set up a call, its acceptable value is supposed to be as low as 0.2% or less. This congestion is experienced when the network is burdened with high number of location update requests, high number of short message (SMS) traffic or in scenarios where so many subscribers are trying to setup calls at the same time without enough SDCCH resources to support these requests. This indicator measures the ease with which a call can be setup, the ease with which we can recharge our account, send SMS, location update, paging and etceteras.
- iv. **TCH congestion rate** - this indicator measures the relative ease with which a traffic channel can be seized to set up a call after a signaling seizure has been successful. The higher this value, the higher the relative difficulty it is in making a call. Traffic channel congestion is caused by unavailability of TCH channels. This congestion is the first level of congestion experienced by the consumer. In a properly dimensioned network the value of this metric should not be more than 2% per cell.
- v. **TCH congestion rate** - this indicator measures the relative ease of seizing a traffic channel to set up a call after a signaling seizure has been successful. Because of the mobility in GSM networks, there might be reasons to handover already established calls to another base station in order to retain the call. This requires the request for traffic channel assignment from a neighboring cell. If this request fails, the call is dropped and the consumer experiences a drop call while the system congestion counter is incremented. In a properly dimensioned network the value of this metric should not be more than 2%.

Figure 1 illustrates some voice KPIs and the location in the receiving chain where they are measured as described in the work of [7].

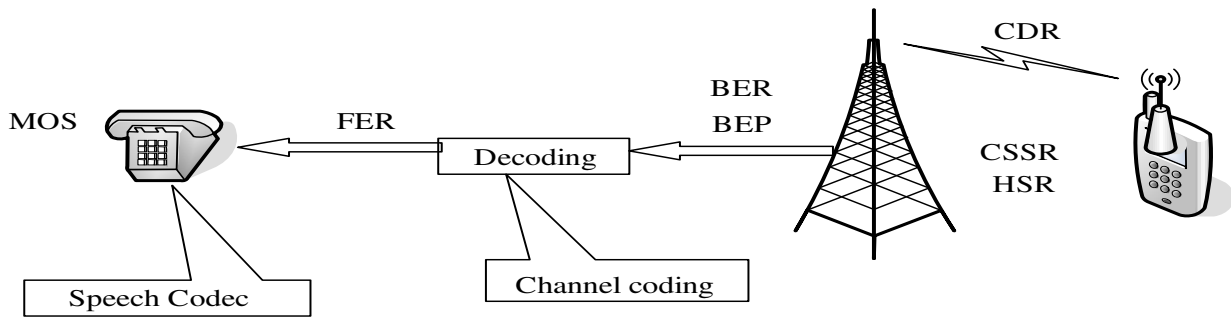


Figure 1: Measurement Points for Main Speech Key Performance Indicators

Table 1: NCC KPIs Target for Cellular Mobile Network

Key Performance Indicator	CSSR	CDR	HSR	SDCCH Cong	CCR	TCH Cong
NCC Target (%)	98	2	98	0.2	96	2

These indicators are not only utilized to measure the network performance but can also be used by the network for multiple radio resource management functions, such as paging, network access, congestion, call drop, handovers, power control, adaptive multi-rate codec (AMR) link and channel mode adaptation, GPRS link adaptation and etceteras. Based on the analysis of these KPIs, tuning and optimization suggestions are provided to resolve network problems. The target set by NCC for some of these KPIs are shown in Table 1 [5].

**3. MATERIALS AND METHODS**

The drive test was performed using *TEMS Investigation* tools setup as shown in Figure 2. The information provided is displayed in status windows of the *TEMS*. This information includes cell identity, base station identity code (BSIC), absolute radio frequency channel number (ARFCN), mobile country code, mobile network code and the location area code (LAC) of the serving cell is also information about RxLev (Received signal strength - power level), BSIC and ARFCN for up to six neighboring cells; channel number(s), timeslot number, channel type and time division offset; channel mode, sub channel number, hopping channel indication, mobile allocation index offset and hopping sequence number of the dedicated channel; and RxQual, FER, discontinuous transmission (DTX) down link, Speech Quality Index (SQI), timing advance (TA), transmit (TX) Power, radio link timeout counter and carrier-to-adjacent (C/A) channel parameters for the radio environment.



Figure 2: Basic TEMS Drive Test Tools used for Log File Collection

To conduct the drive test, cell reference was prepared using NOKIA 3310 and GARMIN GPS 76 [9] in the format shown in Table 2. NOKIA 3310 equipped with Net-monitor allows access to BTS information over the air interface. This information includes cell identity, base station identity code (BSIC), absolute radio frequency channel number (ARFCN), mobile country code (CC), mobile network code (NC), the location area code (LAC), and Received signal strength level (RxLev) of the serving cell. There is also information about RxLev, BSIC and ARFCN for up to six neighboring cells among others. While the GARMIN GPS 76 allows access to location information of the site/cells: latitude (LAT), longitude (LOG) and other topographical data. The drive test routes was defined using MapInfo software as shown in Figure 3.

Table 2: A typical cell ref format

Cell	BCCH	BSIC	Lat	Lon	MCC	MNC	LAC	CI	ANT DIRECTION	ANT BEAM WIDTH
VI003A	101	16	9.63	6.53	621	20	522	10003	0	65
VI003B	105	16	9.63	6.53	621	20	522	20003	120	65
VI003C	110	16	9.63	6.53	621	20	522	30003	240	65
VI010A	102	10	9.62	6.55	621	20	522	10010	0	65
VI010B	110	10	9.62	6.55	621	20	522	20010	120	65
VI010C	114	10	9.62	6.55	621	20	522	30010	240	65
VI010D	750	10	9.62	6.55	621	20	522	40010	0	65
VI010E	748	10	9.62	6.55	621	20	522	50010	120	65
VI010F	754	10	9.62	6.55	621	20	522	60010	240	65

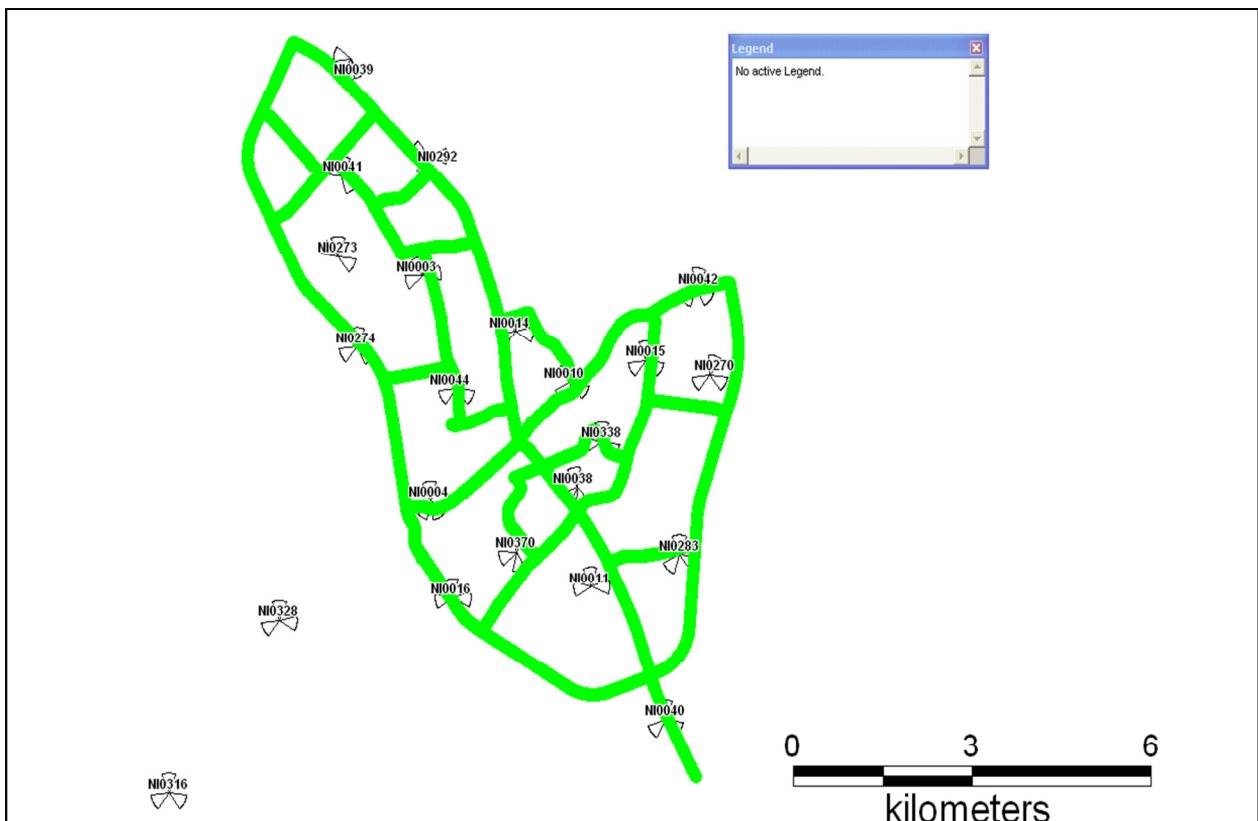


Figure 3: Drive Test Route Used for the GSM Networks in Minna Metropolis

The mobile station (MS) was placed inside the car during the drive test and no external antenna was used. Two different measurement methods were used to collect the log file for this performance analysis, namely, short and long calls.

- i. Short calls were used to collect accessibility statistics. A short voice call attempt was performed every 50 seconds, including 10 seconds of idle time between two consecutive calls. A script in the TEMS Investigation logging tool automatically initiates the short calls. An event “Call Attempt” was generated every time the script triggered a new call attempt (meaning

a number was dialled). The other event “Blocked Call” was generated every time the call setup procedure failed.

- ii. Long calls were used to obtain retainability statistics. Long voice calls were established automatically and were ended by blocks, drops or normal user release. TEMS Investigation tool generated an event “Drop Call” every time the connection dropped. In this drive test, the long call was programmed in the command sequence to end after 120 seconds.

QoS is defined as the collective effect of service performance, which determines the degree of

satisfaction of a user of the service [10]. The quality of a radio network can be evaluated by examining the KPIs such as: Signal quality (RX Qual), Speech quality index (SQI), Dropped call ratio (SDCCH and TCH), MS and BTS power levels, RX-level [11]. The BER is an estimated number of bit errors in a number of bursts to which corresponds a value from 0 to 7 (best to worst) of the RX Qual. RX-Qual reflects the average BER over a period of 0.5s and it does not capture many phenomena that affect the listener’s perception of speech quality. That is why other metrics are defined to take care of factors that RX-Qual does not consider which [12] are:

- i. Rx-Level is defined as the power level corresponding to the average received signal level of the downlink as measured by the mobile station. The range of Rx-level is between -55 to -110. Level lower than -70 shows low signal levels, normal range is from -30 to -70. It is been further classified as Rx-Level Sub and Rx-level Full.
- ii. Frame Erasure Rate (FER) is a speech quality degrade factor that indicates fading and interference. Voice quality is judged upon the Frame erasure rate.
- iii. Speech Quality Index (SQI) SQI is an estimate of the perceived speech quality as experienced by the mobile user, is based on handover events and on the bit error and frame erasure distributions.

Log file can easily be analyzed by: post processing of data; plotting RxLev; RxQual, speech SQI and FER for overall picture of the driven area. The usual action to be taken for the network after drive test are: defining

missing neighbor relations; proposing new sites or sector additions with before and after coverage plots; proposing antenna azimuth changes; proposing antenna tilt changes; proposing antenna type changes; BTS equipment/filter change; re-tuning of interfered frequencies etc [3].

The analysis was performed for the test areas (From Minna Trade Fair Complex through Ladi Kwali road to Prison Service Office and linked to Tudun Fulani area. Kuta road to Maitumbi area was also drive test. The areas are shown in Figure 3 based on the log file collected with TEMS Investigation shown in Figure 2.

**4. RESULT**

The coverage penetration level of signals of W, X, Y and Z network in different parts of Minna Metropolis is shown in Figures 4 to 7.

Some of the KPIs plotted are RxQual, RxLev, SQI and FER as shown in Figures 8 to 11. The Rx Lev values, between 0 to -65dBm indicates excellent coverage; -65 to -75dBm is very good; -75 to -85dBm is good; -85 to -95dBm is average and -95 to -110dBm is poor. Below -110dBm it is assume there is no coverage.

A value of RxQual between 100% to 95% indicates excellent quality; and less than 95% indicates poor quality. Also, values of SQI greater than 16.5dBQ is good; between 16.5dBQ to 4.5dBQ is acceptable and below 4.5dBQ . Summary of all events that happened during the drive test on each network is shown in Tables 3 and 4.



Figure 4: W network coverage penetration in Minna Metropolis

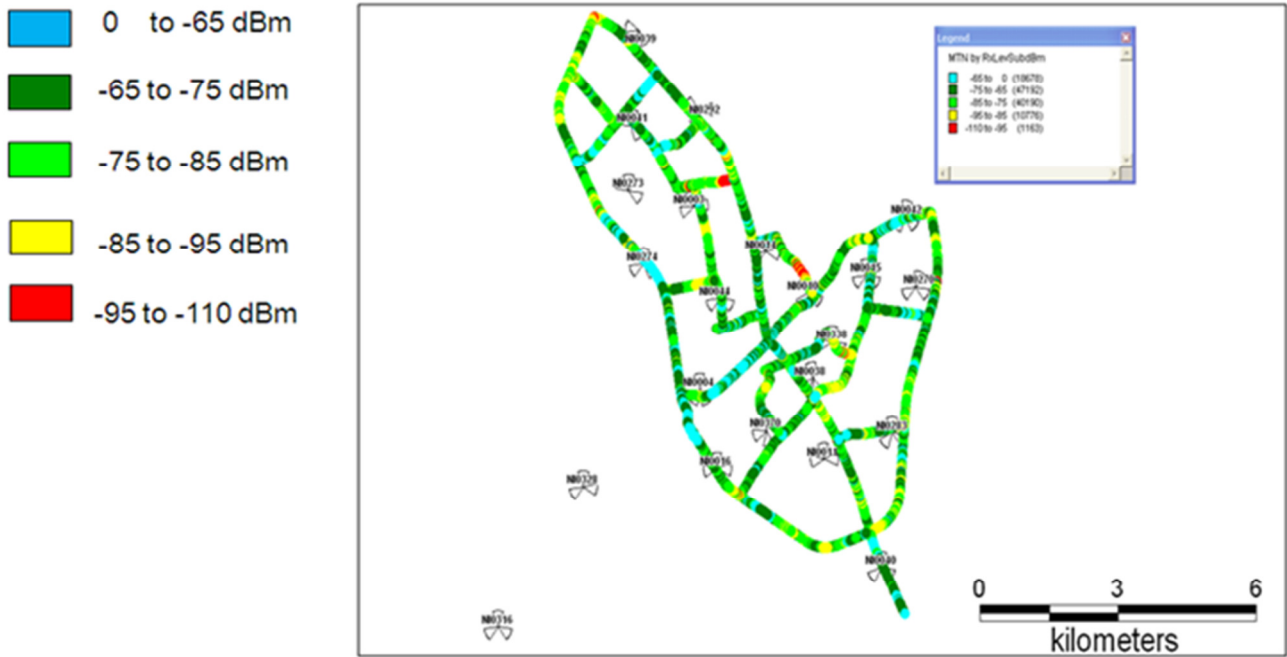


Figure 5: Z network coverage penetration in Minna Metropolis

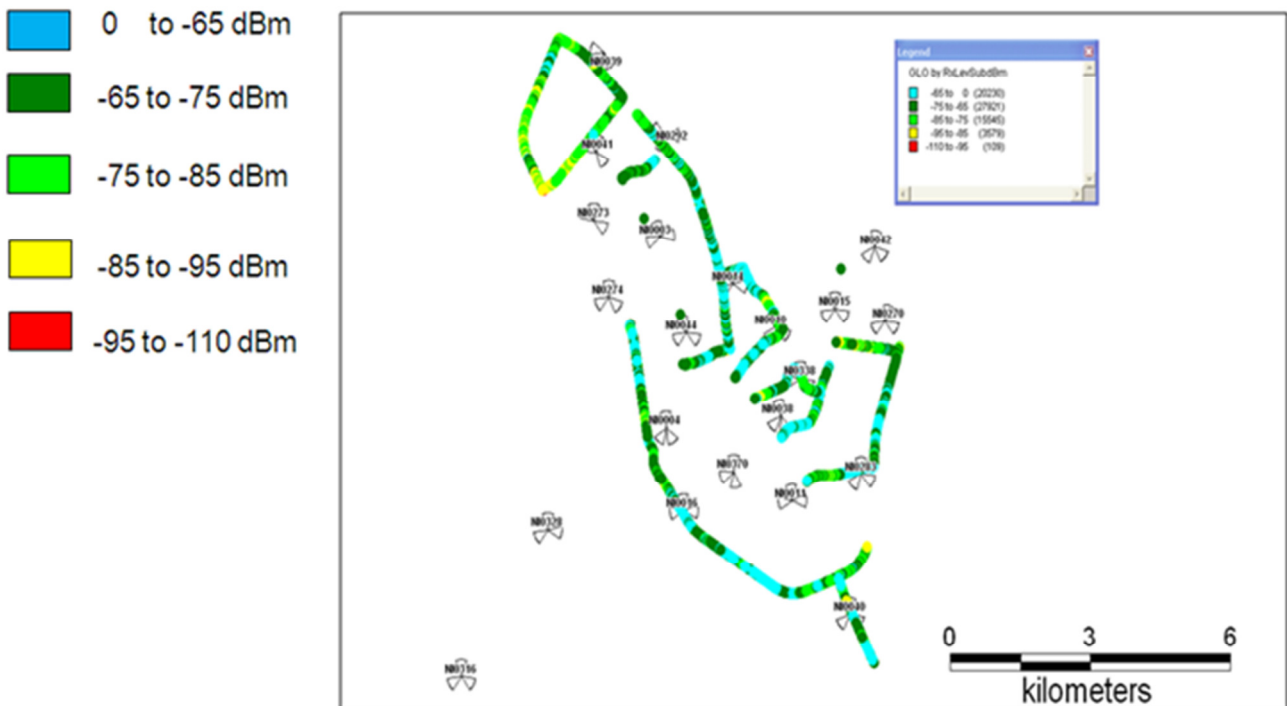


Figure 6: Y network coverage penetration in Minna Metropolis

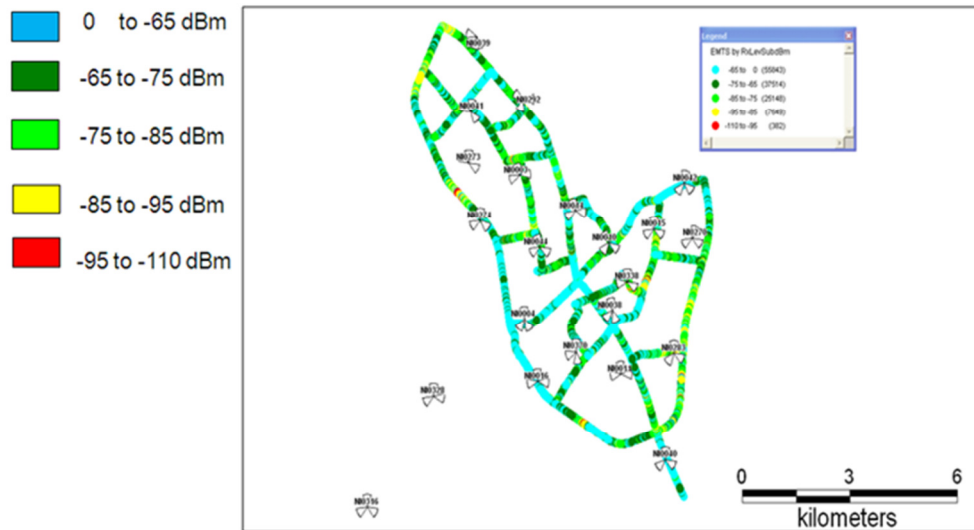


Figure 7: X network coverage penetration in Minna Metropolis

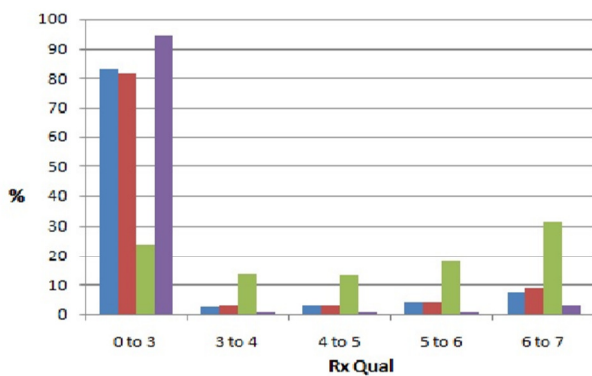


Figure 8: Summary of RxQual

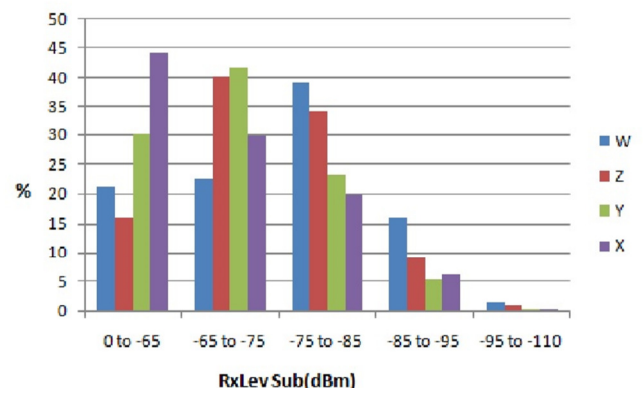


Figure 9: Summary of RxLev sub (dbm)

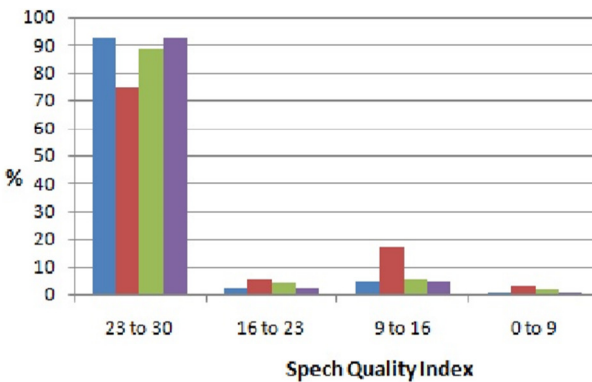


Figure 10: Summary of SQI

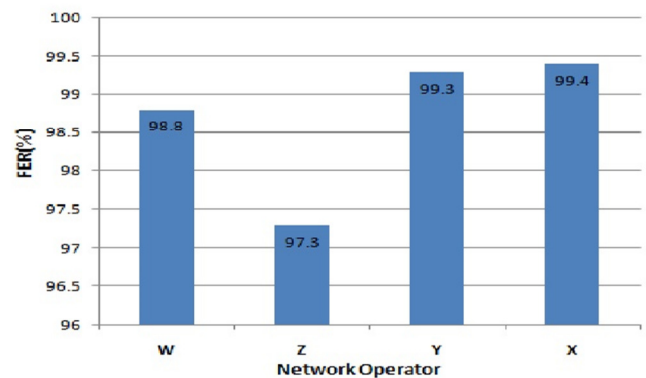


Figure 11: Summary of FER

Table 3: Summary of Call Events and KPIs for W and Z Network

Operator	Events	Number	Operator	Events	Number
W	Call Attempt	113	Z	Call Attempt	112
	Call Established	101		Call Established	105
	Block call	2		Block call	4
	Dropped call	1		Dropped call	1
	Handover	134		Handover	197
	Handover Failure	4		Handover Failure	9
Operator	KPI	Value	Operator	KPI	Value
W	CSSR	89.38	Z	CSSR	93.75
	HSR	97.1		HSR	95.63
	DCR	0.98		DCR	0.94
	Blocking	1.77		Blocking	3.57

Table 4: Summary of Call Event and KPIs for Y and X Network

Operator	Events	Number	Operator	Events	Number
Y	Call Attempt	112	X	Call Attempt	112
	Call Established	104		Call Established	109
	Block call	4		Block call	1
	Dropped call	12		Dropped call	0
	Handover	66		Handover	146
	Handover Failure	0		Handover Failure	2
Operator	KPI	Value	Operator	KPI	Value
Y	CSSR	92.86	X	CSSR	97.32
	HSR	100		HSR	98.65
	DCR	10		DCR	0
	Blocking	3.57		Blocking	0.89

Table 5: Ranking of various network quality using NCC KPIs target

OPERATE	W	Z	Y	X	GENERAL RANKING	W RANKING
RX Level (>75dBm)	43.55	55.82	71.46	73.78	X	4th
RX Qual (0-5)	88.78	87.12	50.82	95.67	X	2nd
SQI(16-30)	94.89	79.87	93.06	94.66	W	1st
CSSR	89.38	93.75	92.86	97.32	X	4th
HSR	97.1	95.63	100	98.65	Y	3rd
CDR	0.98	0.94	1.0	0	X	3rd
Call Blocking	1.77	3.57	3.57	0.89	X	2nd

**5. DISCUSSION**

Using NCC KPIs target as defined in Table 1, the summary of the log file analysis best ranking and comparative X ranking is shown in Table 5.

Considering the number of blocked calls, dropped calls and handover failure in Table 3 and 4, it is obvious that Y has the worst network quality followed by Z in the Metropolis while X has best network quality followed by W. Y however, has the best planned network requiring minimal handover and hence 100% handover success rates. W network ranked fourth in terms of Rx Lev, CSSR and third in HSR as well as CDR. However, because of the lack of access to cell reference data of other networks, further in-depth analysis and recommendations was only possible on W network.

The W sites that were on air during this drive test are identified as: VI0003, VI0004, VI0010, VI0011, VI0014, VI0015, VI0016, VI0038, VI0039, VI0040,

VI0041, VI0042, VI0044, VI0316, VI0328, VI0283, VI0370, VI0338, VI0270, VI0274, VI0273 and VI0292. The log file analysis showed that some of these sites need optimization in order to improve the network quality. The problems that affected the sites and the optimization measures required to resolve the problems are recommended in Table 6.

**6. LIMITATIONS**

One of the challenges that militate against Teletraffic Engineering research in Nigeria is the unwillingness on the part of network providers to allow researchers unfiltered access to their database. This makes researchers to resort to network simulation instead of using real-live network statistics. So, we could not get comprehensive cell reference data for X, Y and Z networks. Hence, in-depth analysis could not be done on these networks as was done for W network.



Table 6: Summary of optimization recommendation

SITE ID	PROBLEM	SUGGESTION	RECOMMENDATION
VI0040	AZIMUTH AND SWAPPED	CHECK ANTENNA AZIMUTH AND SWAPPED BETWEEN SECTOR D/F	CONFIRM THE SWAPPED AND CORRECT IT
VI0038	AZIMUTH	CHECK AZIMUTH FOR SECTOR C/F	CONFIRM AZIMUTH AND COORDINATE
VI0044	SWAPPED	ALL SECTOR SWAPPED A/B/C	CONFIRM THE SWAPPED AND CORRECT IT
VI0283C	AZIMUTH	CHECK AZIMUTH AND TILT	CONFIRM AZIMUTH
VI0041	SWAPPED	ALL SECTOR SWAPPED D/E/F	CONFIRM THE SWAPPED AND CORRECT IT
VI0270	SWAPPED	ALL SECTOR SWAPPED A/B/C	CONFIRM THE SWAPPED AND CORRECT IT
VI0016A	INTERFERENCE	VI0016A BCCH 112, BSIC 27 AND VI0370C BCCH 111, BSIC 25 ARE HAVING ADJACENT INTERFERENCE	FREQUENCY ADJUSTMENT IS ADVISED
VI0044A	INTERFERENCE	VI0044A BCCH 104, BSIC 04 AND VI0338A BCCH 15 ARE HAVING ADJACENT INTERFERENCE	FREQUENCY ADJUSTMENT IS ADVISED

6. CONCLUSIONS

Optimization is a continuous process and RF teams ought always to try and improve the quality of the network by making necessary configuration changes to enhance network performance.

From the comparative analysis done in this study, Y has the worst network quality while X has best network quality followed by W.

This work also helps to validate the claim made by the NCC QoS audit report [5] which said that X network has the best network quality nationwide as obtained from network operating centre (NOC) statistics.

The recommendations in Table 6 need to be implemented so that post-drive test can be done to evaluate the performance improvement that is achieved in the network quality.

7. REFERENCES

[1] Yong X, "Resource Management and QoS Control in Multiple Traffic Wireless and Mobile Communication Systems", MSc Thesis, University of Cincinnati, 2005.

[2] Pavan Kumar V.S., Anuradha.B., Vivek and Naresh, "Improvement of Key Performance Indicators and QoS Evaluation in Operational GSM Network", *International Journal of Engineering Research and Applications (IJERA)* ISSN: 2248-9622 [www.ijera.com](http://www.ijera.com) Vol. 1, Issue 3, pp.411-417.

[3] Goksel S., "Optimization and Log File Analysis in GSM", available at <http://xa.yimg.com/kq/groups/19564168/1199781837/name/Drive+Test+Problem+Analysis.pdf>.

[4] Sireesha B.V., Varadarajan S., Vivek and Naresh, "Increasing of Call Success Rate in GSM Service Area Using RF Optimization", *International Journal of Engineering Research and Applications (IJERA)* ISSN: 2248-9622 [www.ijera.com](http://www.ijera.com) Vol. 1, Issue 4, pp. 1479-1485.

[5] Nigeria Communication Commission, Retrieved May 4, 2014 from: [http://www.ncc.gov.ng/index.php?option=com\\_content&view=article&id=332&Itemid=104](http://www.ncc.gov.ng/index.php?option=com_content&view=article&id=332&Itemid=104).

[6] Mishra, A. R., "Fundamentals of cellular Network planning and Optimisation", John Wiley and Sons, 2004.

[7] Timo, H.; Javier ,R. and Juan M., GSM, GPRS and EDGE Performance, Evolution towards 3G/UMTS, 2nd Edition, John Wiley and Sons, 2003.

[8] International Telecommunication Union, World Radio communication Seminar highlights future communication technologies, Retrieved December 26, 2014 from: <http://en.wikipedia.org/wiki/4G>.

[9] Nokia NetMonitor Manual, Version 0.95, 11.11.2002.

[10] ITU-T Rec. E.800, "Terms and Definitions Related to Quality of Service and Network Performance Including Dependability," Aug. 1993.

[11] Joseph Isabona, "Maximising Coverage and Capacity with QOS Guarantee in GSM Network by Means of Cell Cluster Optimization" *International Journal of Advanced Research in Physical Science (IJARPS) Volume 1, Issue 6, October 2014, PP 44-55* ISSN 2349-7874 (Print) & ISSN 2349-7882 (Online) [www.arcjournals.org](http://www.arcjournals.org)

[12] <http://www.slideshare.net/shirazthegreat/drive-testing>