

## The butterflies (Lepidoptera: Papilionoidea) of Semuliki National Park, western Uganda

Published online: 21 May 2018

DOI: <https://dx.doi.org/10.4314/met.v29i1.6>

Scott Forbes

33 Hope Terrace, Edinburgh, EH9 2AP, Scotland, U.K. E-mail: [hkxpat@gmail.com](mailto:hkxpat@gmail.com)

Copyright © Lepidopterists' Society of Africa

**Abstract:** A checklist of the butterflies (Lepidoptera: Papilionoidea) of Semuliki National Park, Uganda is provided. The list was compiled from records made by the author as well as from historical records and the records of a number of field workers. A total of 448 species are listed for the Park.

**Key words:** Lepidoptera, Papilionoidea, butterflies, Semuliki National Park, Uganda.

**Citation:** Forbes, S. (2018). The butterflies (Lepidoptera: Papilionidae) of Semuliki National Park, western Uganda. *Metamorphosis* 29: 14–22.

### INTRODUCTION

Semuliki National Park (SNP), with an area of 219 km<sup>2</sup>, and lying at Lat. -1.455, Long. 31.152 (DD), is Uganda's only remaining lowland forest. The conservation status of the Park includes being located within the Eastern Afrotropical hotspot region within the Albertine Rift, the western arm of the Rift Valley. (Fig. 1). It has also been ranked in a global irreplaceability list (LeSaout *et al.*, 2013) and as a Key Biodiversity Area (IUCN, 2015).

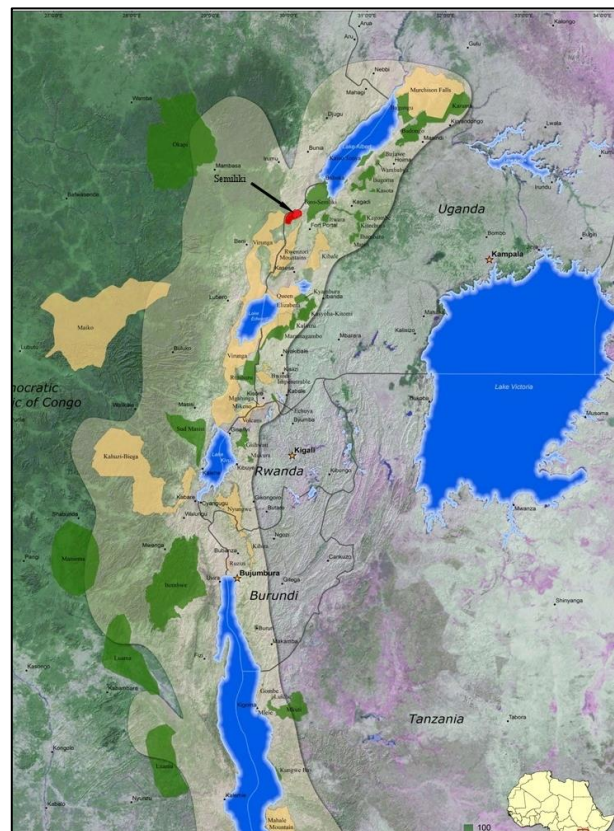
Much of the park is flat, lying at an altitude of 670 m in the east, rising to undulating sections of 760 m. Only 10 km<sup>2</sup> lies above 750 m, at its western boundary. The Park is situated within the Semliki Valley and is bounded to the north-northwest by the steep escarpment of the Rwenzori Mountain Range, which isolates the Park from the rest of East Africa. To the east is a demarcated boundary where the rainforest is supplanted by the open grasslands of the Semliki Valley, which stretches down to the shores of Lake Albert. The northern boundary is the Semliki River, the international boundary between Uganda and the Democratic Republic of Congo (DRC) and to the west the Lamia River borders the Park. The Ituri Forest of the DRC lies along the eastern margin of the Congo Basin, and SNP is the easternmost extension of this typical Guineo-Congolese forest habitat. It makes up one of a few of the eastern forest fragments of the Congo Basin forest system, which totals 54% of Africa's tropical forests (Mayaux *et al.*, 2013).

This lowland forest is classified as moist, semi-deciduous (Langdale-Brown *et al.*, 1964) and, being

Received: 28 February 2018

Published: 21 May 2018

Copyright: This work is licensed under the Creative Commons Attribution-NonCommercial-NoDerivs 3.0 Unported License. To view a copy of this license, send a letter to Creative Commons, Second Street, Suite 300, San Francisco, California, 94105, USA, or visit: <http://creativecommons.org/licenses/by-nc-nd/3.0/>



**Figure 1** - The Albertine Rift (pale shading), with Semuliki National Park (red; arrowed). Map from Protected Area Watch for the Albertine Rift Project (PAWAR), 2016.

identified as the *Cynometra-Celtis* zone, one of four different types of lowland forest types described by Hamilton (1981) (Table 1). An area of approximately 30% is dominated by a single leguminous tree, *Cynometra alexandri*. Much of the Park overlies grey alluvial clay soils that tend to be saline, have reduced fertility, and are poorly drained (Howard, 1991).

These give rise to swamp communities, which contribute to around 7% of the total area. It is probably

**Table 1** – Summary of salient characteristics of Semuliki National Park.

| Characteristic        | Description  |
|-----------------------|--|
| Co-ordinates          | Lat. -1.455, Long. 31.152 (DD)   |
| Designation           | Gazetted as National Park in 1993; full status in 1994   |
| Biogeography          | Afrotropical region, Uganda zone   |
| Forest Classification | Single-dominant, moist-evergreen and semi-evergreen Guineo-Congolian lowland rainforest  |
| Location              | Semliki Valley, north-northwest of the Rwenzori mountains in the Albertine Rift. Sharing a 1 km boundary with the North Rwenzori Forest Reserve and contiguous with a 10 km boundary of the Parc National des Virunga in the DRC. Bordered by the Lamia and Semliki Rivers to the west and north; by the Fort Portal to Bundibugyo road to the south and community agricultural land to the east |
| Biodiversity Hotspot  | Eastern Afromontane Division   |
| Elevation             | Medium altitude, 670 to 760 m; <10 km <sup>2</sup> >750 m  |
| Soils                 | Rift valley sediments, grey halomorphic alluvial clay soils  |
| Recent History        | Western sections of the Park were used for cultivation in the 1970's and 1980's. Encroachers removed in the late 1980's. Roughly 25% is now considered undisturbed   |
| Climate               | Two seasons. Dry from December to February and a long diffuse wet season with two peaks, from April to May and October to November   |
| Rivers                | Drained by Ntotoro, Rugo, Mampongi and Kirumya rivers  |
| Precipitation         | Approximately 1350 mm – 1500 mm annually   |
| Temperature           | 15°C to 25°C   |
| Current Forest Use    | Monthly firewood collection by women from the surrounding communities – can be as many as 700 individuals. Unrestricted access for the Batwa, the local indigenous community, for firewood collection, medicinal plant harvesting and beehive access. Regular security patrols. Small outpost constructed by fishermen by the Semliki River  |
| Management            | Periodic debarking of invasive and exotic trees. Continual maintenance of KR trail specifically used for birders, quarterly maintenance of RM trail. Biannual grassland burning in December and January at the start of the dry season   |
| Threats               | Community encroachment on the western border. Poaching for bush meat and illegal fishing. River pollution from banana beer production runoff entering the water course running into the Park   |

part of the major Pleistocene (2 500 000 – 12 000 yrs BP) forest refugium from the eastern DRC (Hamilton, 1981), which has resulted in large species diversity of many communities characterised by typical Guineo-Congolian fauna, with many species at the eastern limit of their ranges. In addition to differences in forest type associated with altitudinal and climatic factors, historical uses of the Park have created a mosaic of climax vegetation types. These were primarily created from the early 1970's when viable forest sections of the Park, to the east of the Kirumya River, were destroyed by agricultural encroachment to provide for community agricultural land for subsistence farming. The last of these cultivators were finally evicted in the mid 1980's. Thus, considerable local variation related to site factors, such as past management, soil type and drainage conditions are

represented by large differences in tree species-area relationships at sites within close proximity (Howard, 1991).

## MATERIALS AND METHODS

### Sampling

Due to permit restrictions implemented for Ugandan National Parks, it is difficult to remove material for external identification, which is sometimes necessary for these insects. The fruit-feeding butterfly assemblage, which includes the Nymphalidae genera *Bebearia*, *Euphaedra*, *Cymothoe*, *Bicyclus* and *Charaxes* have been sampled consistently over a period of years (2012 to 2017), but predominantly in only two transects 500 m in length around 7 kms apart (Kirumya and Sempaya trails). Genitalic dissections were retained in glycerol vials pinned under the corresponding specimens.

### Source of other records and data

Records from Davenport & Howard (1996) have been merged with records by Forbes for the period from 2013 to 2017. The latter records were gathered during research for a completed PhD entitled '*The ecology and conservation of a fruit-feeding butterfly assemblage in a Ugandan lowland rainforest*', together with other records provided by D. Bernaud, R. Ducarme, J-P. Lequeux, and H. Selb. A maximum of two citations per species record are given even though, in some instances, more records exist. As further records are identified or recorded in the field, updated versions of this checklist will be uploaded to the SNP butterflies Facebook page, with images being uploaded to the SNP butterflies Instagram page.

Museum collections consulted were: Museum of Central Africa, Tervuren, Belgium; National Museum of Scotland, Edinburgh (NMS) and Glasgow University Museum, Glasgow, Scotland. National Museums of Kenya (NMK) citations were provided by Mr Steve Collins of the African Butterfly Research Institute (ABRI), Nairobi, Kenya.

### Taxonomy

Afrotropical butterfly taxonomy, to generic level, follows Williams (2015), Dhungel & Wahlberg (2018) and Espeland *et al.* (2018).

## RESULTS AND CONCLUSIONS

A total of 448 species have been recorded from SNP to date (Table 2). This is an increase of 142 species since the last official census by Davenport & Howard (1996), who recorded 309 species. The current total is significantly short of the over 600 species that an African equatorial lowland forest would be predicted to contain (S. Collins, pers. comm.). Using the Davenport (2001) figure as a midpoint for total butterfly species in Uganda (1 251), the SNP contains just over 36% of Ugandan butterfly species.

The butterfly families that require further sampling are

the Lycaenidae and Hesperidae, which should contribute at least 40% of the total number of species of an Afrotropical lowland forest (S. Collins, pers. comm.). Currently, the combined species total of these two families contributes just below 30% of the total but the Lycaenidae and Hesperidae of the lowland forests in the DRC (Ducarme, 2018) should also be found in the SNP since they share a similar habitat and altitude.

## ACKNOWLEDGEMENTS

I thank Justice Olibokiriho at SNP for continuing to sample and identify new records, and for his assistance in the field. Joachim Mutaibisa and Martha Komuhangi were also both instrumental in providing excellent field assistance and ongoing sampling.

Many thanks to the following collaborators for help and guidance in compiling this species list:

Mr Dominique Bernaud – Subfamily Heliconiinae  
 Mr Röbert Ducarme – NE DRC, Semliki Valley, Albertine Rift, Congo Basin, Blue and Mitumba Mountains and southern North Kivu distributional records  
 Mr Jean-Pierre Lequeux – Family Papilionidae and Subfamily Charaxinae  
 Mr Haydon Warren-Gash – Family Pieridae  
 Mr Harald Selb – Family Lycaenidae

Mr Steve Collins (ABRI) and Dr Keith Bland of the National Museum of Scotland NMS reviewed the final draft of this document. Their input is valued and much appreciated.

## LITERATURE CITED

BERNAUD, D. 2016. Semuliki National Park, Uganda – provisional checklist of Acraeinae (unpublished).  
 DAVENPORT, T.R.B. 2001. *The butterflies of Uganda: an annotated catalogue*. Wildlife Conservation Society, Tanzania.  
 DAVENPORT, T.R.B. & HOWARD, P. 1996. *Semliki National Park, Biodiversity Report*. Uganda Forest Department.  
 DHUNGEL, B. & WAHLBERG, N. 2018. Molecular systematics of the subfamily Limenitidinae (Lepidoptera: Nymphalidae). *PeerJ* 6:e4311; DOI 10.7717/peerj.4311.  
 DUCARME, R. 2017. Relevé faunistique des lépidoptères Rhopalocères du Nord Est de la République Démocratique du Congo par milieu naturel (unpublished).  
 DUCARME, R. 2018. Checklist of the butterflies (Lepidoptera: Papilionoidea) of the Democratic Republic of the Congo. *Metamorphosis* 29 [in press]  
 ESPELAND, M., BREINHOLT, J., WILLMOTT, K.R., WARREN, A.D., VILA, R., TOUSSAINT, E.F.A., MAUNSELL, S.C., ADUSE-POKU, K., TALAVERA, G., EASTWOOD, R., JARZYNA, M.A., GURALNICK, R., LOHMAN, D.J., PIERCE, N.E. & KAWAHARA, A.Y. 2018. A comprehensive

and dated phylogenomic analysis of butterflies. *Current Biology* 28: 1–9.  
 HAMILTON, A. C. 1981. The quaternary history of African forests: its relevance to conservation. *African Journal of Ecology* 19: 1–6.  
 HOWARD, P. 1991. *Nature conservation in Uganda's tropical forest reserves*. IUCN, Gland, Switzerland.  
 IUCN. 2015. *Global Standard for the Identification of Key Biodiversity Areas KBA's*. Gland, Switzerland.  
 LANGDALE-BROWN, I., OSMASTON, H.A. & WILSON, J.G. 1964. *The Vegetation of Uganda and its bearing on land-use*. Uganda Government Printer, Entebbe, Uganda.  
 LEQUEUX, J-P. 2016. Semuliki National Park – Papilionidae and Charaxinae records (unpublished).  
 LESAOUT, S., HOFFMANN, M., SHI, Y., HUGHES, A., BERNARD, C., BROOKS, T.M., BERTZKY, B., BUTCHART, S.H.M., STUART, S.N., BADMAN, T. & RODRIGUES A.S.L. 2013. Protected areas and effective biodiversity conservation. *Science* 342: 803–805.  
 MAYAUX, P., PEKEL, J.F., DESCLÉE, B., DONNAY, F., LUPI, A., ACHARD F., CLERICI, M., BODART, C., BRINK, A., NASI, R. & BELWARD, A. 2013. State and evolution of the African rainforests between 1990 and 2010. *Philosophical Transactions of the Royal Society of London* 368: 20120300.  
 SELB, H.E. 2014. Semuliki National Park – Uganda, Field Survey (unpublished).  
 WILLIAMS, M.C. 2015. Classification of the Afrotropical butterflies to generic level. *Metamorphosis* 26: 102–108.

**Table 2** – Checklist of the butterflies of Semuliki National Park, Western Uganda.

| TAXON   | COLLECTOR(S)/    |
|---|------------------|
| <b>FAMILY PAPILIONIDAE Latreille, 1802</b>              |                  |
| Subfamily Papilioninae Latreille, 1802                  |                  |
| Tribe Leptocircini Kirby, 1896                          |                  |
| <b>Genus Graphium Scopoli, 1777</b>                     |                  |
| <i>G. angolanus baronis</i> (Ungemach, 1932)            | Davenport        |
| <i>G. leonidas leonidas</i> (Fabricius, 1793)           | Forbes/Davenport |
| <i>G. policeses policeses</i> (Cramer, 1775)            | Davenport        |
| <i>G. antheus</i> (Cramer, 1779)                        | Forbes/Davenport |
| Tribe Papilionini Latreille, 1802                       |                  |
| <b>Genus Papilio Linnaeus, 1758</b>                     |                  |
| <i>P. mackinnoni mackinnoni</i> Sharpe, 1891            | Forbes/Davenport |
| <i>P. charopus montuosus</i> Joicey & Talbot, 1927      | Davenport        |
| <i>P. sosia debilis</i> Storage, 1951                   | Forbes/Davenport |
| <i>P. chrappowskoides chrappowskoides</i> Storage, 1952 | Forbes/Davenport |
| <i>P. nireus nireus</i> Linnaeus, 1758                  | Forbes/Davenport |
| <i>P. cynorta</i> Fabricius, 1793                       | Forbes/Davenport |
| <i>P. dardanus dardanus</i> Brown, 1776                 | Forbes/Davenport |
| <i>P. phorcas congoanus</i> Rothschild, 1896            | Forbes/Davenport |
| <i>P. nobilis crippsius</i> Stoneham, 1936              | Forbes/Davenport |
| <i>P. hesperus hesperus</i> Westwood, 1843              | Forbes           |
| <i>P. lormieri semlikana</i> Le Cerf, 1924              | Davenport        |
| <i>P. demodocus demodocus</i> Esper, 1798               | Forbes/Davenport |
| <i>P. mechowi mechowi</i> Dewitz, 1881                  | Forbes/Davenport |
| <i>P. zenobia</i> Fabricius, 1775                       | Forbes/Davenport |
| <b>Total for the family Papilionidae</b>                | <b>18</b>        |
| <b>FAMILY HESPERIIDAE Latreille, 1809</b>               |                  |
| Subfamily Coeliadinae Evans, 1937                       |                  |
| <b>Genus Coeliades Hübner, 1818</b>                     |                  |
| <i>C. chalybe chalybe</i> (Westwood, 1852)              | Davenport        |
| <i>C. forestan forestan</i> (Stoll, 1782)               | Forbes/Davenport |
| <i>C. libeon</i> (Druce, 1875)                          | Forbes/Davenport |
| <b>Total for the subfamily Coeliadinae</b>              | <b>3</b>         |
| Subfamily Pyrginae Burmeister, 1878                     |                  |
| Tribe Tagiadini Mabilite, 1878                          |                  |
| <b>Genus Eagris Guenée, 1862</b>                        |                  |
| <i>E. lucretia</i> (Hewitson, 1875)                     | Forbes/Davenport |
| <i>E. decastigma purpura</i> Evans, 1937                | Davenport        |
| <b>Genus Calleagris Aurivillius, 1925</b>               |                  |
| <i>C. hollandi</i> (Butler, 1897)                       | Davenport        |
| <i>C. lacteus lacteus</i> (Mabilite, 1877)              | Davenport        |
| <b>Genus Tagiades Hübner, 1819</b>                      |                  |
| <i>T. flesus</i> (Fabricius, 1781)                      | Davenport        |
| Tribe Celaenorrhini Swinhoe, 1912                       |                  |
| <b>Genus Sarangesa Moore, 1881</b>                      |                  |
| <i>S. lucidella lucidella</i> (Mabilite, 1891)          | Davenport        |
| <i>S. brigida sanaga</i> Miller, 1964                   | Davenport        |
| <b>Total for the subfamily Pyrginae</b>                 | <b>7</b>         |
| Subfamily Hesperinae Latreille, 1809                    |                  |
| Tribe <i>incertae sedis</i>                             |                  |
| <b>Genus Kedestes Watson, 1893</b>                      |                  |
| <i>K. rogersi</i> Druce, 1907                           | Forbes           |
| <b>Genus Teniorhinus Holland, 1892</b>                  |                  |
| <i>T. ignita</i> (Mabilite, 1877)                       | Davenport        |
| <i>T. watsoni</i> Holland, 1892                         | Davenport        |
| <b>Genus Ceratrichia Butler, 1870</b>                   |                  |
| <i>C. semlikensis</i> Joicey & Talbot, 1921             | Forbes/Davenport |
| <i>C. clara medea</i> Evans, 1937                       | LepSoc Africa    |
| <i>C. wollastoni</i> Heron, 1909                        | Davenport        |
| <b>Genus Ceratricula Larsen, 2013</b>                   |                  |
| <i>C. semilutea congdoni</i> Larsen, 2013               | LepSoc Africa    |
| <b>Genus Pardaleodes Butler, 1870</b>                   |                  |
| <i>P. tibullus torensis</i> Bethune-Baker, 1906         | Forbes           |
| <i>P. sator pusiella</i> Mabilite, 1877                 | Forbes/Davenport |
| <i>P. incerta incerta</i> (Snellen, 1872)               | Forbes/Davenport |
| <b>Genus Osmodes Holland, 1892</b>                      |                  |
| <i>O. laronia</i> (Hewitson, 1868)                      | Forbes/Davenport |
| <i>O. thora</i> (Plötz, 1884)                           | Davenport        |
| <b>Genus Acleros Mabilite, 1885</b>                     |                  |
| <i>A. neavei</i> Evans, 1937                            | Davenport        |
| <i>A. ploetzi</i> Mabilite, 1889                        | Davenport        |
| <b>Genus Hypoleucis Mabilite, 1891</b>                  |                  |
| <i>H. tripunctata draga</i> Evans, 1937                 | Davenport        |
| <b>Genus Meza Hemming, 1939</b>                         |                  |
| <i>M. cybeutes pallida</i> (Evans, 1937)                | Davenport        |
| <b>Genus Andronymus Holland, 1896</b>                   |                  |
| <i>A. neander neander</i> (Plötz, 1884)                 | Davenport        |
| <b>Genus Zophopetes Mabilite, 1904</b>                  |                  |
| <i>Z. dysmephila</i> (Trimen, 1868)                     | Davenport        |
| <i>Z. nobilior</i> (Holland, 1896)                      | Davenport        |
| <b>Genus Gamia Holland, 1896</b>                        |                  |
| <i>G. shelleyi</i> (Sharpe, 1890)                       | Davenport        |
| <b>Genus Gretna Evans, 1937</b>                         |                  |
| <i>G. cylinda</i> (Hewitson, 1876)                      | Davenport        |
| <b>Genus Caenides Holland, 1896</b>                     |                  |
| <i>C. dacela</i> (Hewitson, 1876)                       | Davenport        |
| <b>Genus Monza Evans, 1937</b>                          |                  |
| <i>M. punctata crola</i> Evans, 1937                    | Davenport        |
| Tribe Baorini Doherty, 1886                             |                  |
| <b>Genus Borbo Evans, 1949</b>                          |                  |
| <i>B. fallax</i> (Gaede, 1916)                          | Forbes/Davenport |
| <b>Total for the subfamily Hesperinae</b>               | <b>24</b>        |
| <b>Total for the family Hesperidae</b>                  | <b>34</b>        |
| <b>FAMILY NYMPHALIDAE Rafinesque, 1815</b>              |                  |
| Subfamily Danainae Boisduval, 1833                      |                  |
| Tribe Danaini Boisduval, 1833                           |                  |
| Subtribe Danaina Boisduval, 1833                        |                  |
| <b>Genus Danaus Kluk, 1780</b>                          |                  |
| <i>D. chrysippus chrysippus</i> Linnaeus, 1758)         | Forbes/Davenport |
| <b>Genus Tirumala Moore, 1880</b>                       |                  |
| <i>T. petiverana</i> (Doubleday, 1847)                  | Forbes/Davenport |
| <i>T. formosa mercedonia</i> (Karsch, 1894)             | Forbes/Davenport |
| Subtribe Amaurina Le Cerf, 1922                         |                  |
| <b>Genus Amauris Hübner, 1816</b>                       |                  |
| <i>A. niavius niavius</i> (Linnaeus, 1758)              | Forbes/Davenport |
| <i>A. tartarea tartarea</i> Mabilite, 1876              | Forbes/Davenport |
| <i>A. hecate hecate</i> (Butler, 1866)                  | Forbes/Davenport |
| <i>A. albimaculata magnimacula</i> Rebel, 1914          | Davenport        |
| <i>A. crawshayi oscarus</i> Thurau, 1904                | Davenport        |
| <b>Total for the subfamily Danainae</b>                 | <b>8</b>         |
| Subfamily Libytheinae Boisduval, 1833                   |                  |
| <b>Genus Libythea Fabricius, 1807</b>                   |                  |
| <i>L. labdaca</i> Westwood, 1851                        | Forbes/Davenport |
| <b>Total for the subfamily Libytheinae</b>              | <b>1</b>         |
| Subfamily Satyrinae Boisduval, 1833                     |                  |
| Tribe Elymniini Herrich-Schaeffer, 1864                 |                  |
| <b>Genus Elymnias Hübner, 1816</b>                      |                  |
| <i>E. bammakoo rattrayi</i> Sharpe, 1902                | Forbes/Davenport |
| Tribe Melanitini Reuter, 1896                           |                  |
| <b>Genus Gnophodes Doubleday, 1849</b>                  |                  |
| <i>G. betsimena parmeno</i> Doubleday, 1849             | Forbes/Davenport |
| <i>G. chelys</i> (Fabricius, 1793)                      | Forbes/Davenport |
| <b>Genus Melanitis Fabricius, 1807</b>                  |                  |
| <i>M. leda</i> (Linnaeus, 1758)                         | Forbes/Davenport |
| <i>M. libya</i> Distant, 1882                           | Forbes           |
| <i>M. ansorgei</i> Rothschild, 1904                     | Forbes/Davenport |
| Tribe Satyrini Boisduval, 1833                          |                  |
| Subtribe Mycalesina Reuter, 1896                        |                  |
| <b>Genus Bicyclus Kirby, 1871</b>                       |                  |
| <i>B. alboplagia</i> (Rebel, 1914)                      | Forbes/Davenport |
| <i>B. angulosa angulosa</i> (Butler, 1868)              | Forbes/Davenport |
| <i>B. buea</i> (Strand, 1912)                           | Forbes/Davenport |
| <i>B. campina campina</i> (Aurivillius, 1901)           | Forbes           |
| <i>B. hyperanthus</i> (Bethune-Baker, 1908)             | Forbes           |
| <i>B. graueri graueri</i> (Rebel, 1914)                 | Forbes/Davenport |
| <i>B. sebetus</i> (Hewitson, 1877)                      | Forbes/Davenport |

|   |                  |
|---|------------------|
| <i>B. mesogena ugandae</i> (Riley, 1926)                    | Forbes           |
| <i>B. sambulos cyaneus</i> Condamin, 1961                   | Forbes/Davenport |
| <i>B. collinsi</i> Aduse-Poku, Lees & Wahlberg, 2016        | Forbes/Davenport |
| <i>B. auricruda fulgida</i> Fox, 1963                       | Forbes/Davenport |
| <i>B. vulgaris</i> (Butler, 1868)                           | Forbes/Davenport |
| <i>B. jefferyi</i> Fox, 1963                                | Forbes/Davenport |
| <i>B. sandace</i> (Hewitson, 1877)                          | Forbes/Davenport |
| <i>B. sanaos</i> (Hewitson, 1866)                           | Forbes/Davenport |
| <i>B. sophrosyne sophrosyne</i> (Plötz, 1880)               | Forbes/Davenport |
| <i>B. mollitia</i> (Karsch, 1895)                           | Forbes/Davenport |
| <i>B. smithi smithi</i> (Aurivillius, 1899)                 | Forbes/Davenport |
| <i>B. golo</i> (Aurivillius, 1893)                          | Forbes/Selb      |
| <i>B. ignobilis</i> (Butler, 1870)                          | Forbes           |
| <i>B. xeneoides</i> Condamin, 1961                          | Forbes           |
| <i>B. safitza safitza</i> (Hewitson, 1850)                  | Forbes/Davenport |
| <i>B. campus</i> (Karsch, 1893)                             | Forbes/Davenport |
| <i>B. funebris</i> (Guérin-Méneville, 1844)                 | Forbes/Davenport |
| <i>B. procora</i> (Karsch, 1893)                            | Forbes/Davenport |
| <i>B. uniformis</i> (Bethune-Baker, 1908)                   | Forbes/Davenport |
| <b>Genus Brakefieldia</b> Aduse-Poku, Lees & Wahlberg, 2016 |                  |
| <i>B. phaea phaea</i> (Karsch, 1894)                        | Forbes           |
| <i>B. peitho reducta</i> (Libert, 2006)                     | Forbes/Davenport |
| Subtribe Ypthimina Reuter, 1896                             |                  |
| <b>Genus Ypthima</b> Hübner, 1818                           |                  |
| <i>Y. asterope asterope</i> (Klug, 1832)                    | Forbes           |
| <i>Y. doleta</i> Kirby, 1880                                | Forbes/Selb      |
| <i>Y. albida albida</i> Butler, 1888                        | Forbes/Davenport |
| <b>Genus Ypthimomorpha</b> van Son, 1955                    |                  |
| <i>Y. itonia</i> (Hewitson, 1865)                           | Forbes/Selb      |
| <b>Total for the subfamily Satyrinae</b>                    | <b>38</b>        |
| Subfamily Charaxinae Guenée, 1865                           |                  |
| Tribe Pallini Rydon, 1971                                   |                  |
| <b>Genus Palla</b> Hübner, 1819                             |                  |
| <i>P. violinitens bwamba</i> van Someren, 1975              | Forbes/Davenport |
| Tribe Charaxini Guenée, 1865                                |                  |
| <b>Genus Charaxes</b> Ochseneimer, 1816                     |                  |
| <i>C. varanes vologeses</i> (Mabille, 1876)                 | Forbes/Davenport |
| <i>C. fulvescens monitor</i> Rothschild, 1900               | Forbes/Davenport |
| <i>C. acuminatus kigezia</i> van Someren, 1963              | Forbes           |
| <i>C. candiope</i> (Godart, 1824)                           | Forbes/Davenport |
| <i>C. protoctea nothodes</i> Jordan, 1911                   | Forbes/Davenport |
| <i>C. Cynthia kinduana</i> Le Cerf, 1923                    | Forbes/Davenport |
| <i>C. lucretius maximus</i> van Someren, 1971               | Forbes/Davenport |
| <i>C. epijasius</i> Reiche, 1850                            | Forbes           |
| <i>C. castor castor</i> (Cramer, 1775)                      | Davenport        |
| <i>C. brutus angustus</i> Rothschild, 1900                  | Forbes/Davenport |
| <i>C. pollux pollux</i> (Cramer, 1775)                      | Forbes/Davenport |
| <i>C. eudoxus mechowi</i> Rothschild, 1900                  | NMS              |
| <i>C. numenes aequatorialis</i> van Someren, 1972           | Forbes/Davenport |
| <i>C. tiridates tiridatus</i> Röber, 1936                   | Forbes/Davenport |
| <i>C. bipunctatus ugandensis</i> van Someren, 1972          | Forbes/Davenport |
| <i>C. smaragdalis caerulea</i> Jackson, 1951                | Forbes           |
| <i>C. imperialis ugandicus</i> van Someren, 1972            | Forbes/Davenport |
| <i>C. ameliae victoriae</i> van Someren, 1972               | Forbes/Davenport |
| <i>C. pythodoris pythodoris</i> Hewitson, 1873              | Forbes           |
| <i>C. hadrianus</i> Ward, 1871                              | Forbes           |
| <i>C. zingha</i> (Stoll, 1780)                              | Forbes/Davenport |
| <i>C. etesipe etesipe</i> (Godart, 1824)                    | Forbes/Davenport |
| <i>C. anticlea adusta</i> Rothschild, 1900                  | Forbes           |
| <i>C. hildebrandti katangensis</i> Talbot, 1928             | NMS              |
| <i>C. virilis lenis</i> Henning, 1989                       | Forbes/Davenport |
| <i>C. catachrous</i> van Someren & Jackson, 1952            | Forbes/Davenport |
| <i>C. etheocles carpenteri</i> van Someren & Jackson, 1957  | Forbes/Davenport |
| <i>C. cedreatis</i> Hewitson, 1874                          | Forbes/Davenport |
| <i>C. viola picta</i> van Someren & Jackson, 1952           | Forbes/Davenport |

|   |                  |
|---|------------------|
| <i>C. pleione bebra</i> Rothschild, 1900                  | Forbes/Davenport |
| <i>C. paphianus subpallida</i> Joicey & Talbot, 1925      | Forbes/Davenport |
| <i>C. kahlden</i> Homeyer & Dewitz, 1882                  | Davenport        |
| <i>C. nichetes nichetes</i> Grose-Smith, 1883             | NMS              |
| <i>C. lycurgus bernardiana</i> Plantrou, 1978             | Forbes/Davenport |
| <i>C. zelica depuncta</i> Joicey & Talbot, 1921           | NMS              |
| <i>C. trajanus vansomerani</i> (Poulton, 1929)            | Forbes           |
| <i>C. eurinome lequeuxi</i> (Turin, 2009)                 | Forbes/Davenport |
| <i>C. crossleyi ansorgei</i> (Rothschild, 1903)           | Forbes/Lequeux   |
| <i>C. eupale latimargo</i> Joicey & Talbot, 1921          | Forbes/Davenport |
| <i>C. minor karinae</i> Bouyer, 1999                      | Davenport/Selb   |
| <b>Total for the subfamily Charaxinae</b>                 | <b>41</b>        |
| Subfamily Nymphalinae Rafinesque, 1815                    |                  |
| Tribe Kallimini Doherty, 1886                             |                  |
| <b>Genus Catacroptera</b> Karsch, 1894                    |                  |
| <i>C. cloanthe cloanthe</i> (Stoll, 1781)                 | Forbes           |
| Tribe Junoniini Reuter, 1896                              |                  |
| <b>Genus Junonia</b> Hübner, 1819                         |                  |
| <i>J. chorimene</i> (Guérin-Méneville, 1844)              | Forbes/Davenport |
| <i>J. gregorii</i> Butler, 1896                           | Forbes           |
| <i>J. terea tereoides</i> (Butler, 1901)                  | Forbes/Davenport |
| <i>J. sophia sophia</i> (Fabricius, 1793)                 | Forbes/Davenport |
| <i>J. westermanni suffusa</i> (Rothschild & Jordan, 1903) | Davenport        |
| <i>J. oenone oenone</i> (Linnaeus, 1758)                  | Forbes/Davenport |
| <i>J. stygia</i> (Aurivillius, 1894)                      | Forbes/Davenport |
| <i>J. ansorgei</i> (Rothschild, 1899)                     | Forbes/Davenport |
| <b>Genus Salamis</b> Boisduval, 1833                      |                  |
| <i>S. cacta cacta</i> (Fabricius, 1793)                   | Forbes/Davenport |
| <b>Genus Protogoniomorpha</b> Wallengren, 1857            |                  |
| <i>P. temora temora</i> (Felder & Felder, 1867)           | Forbes/Davenport |
| <i>P. parhassus</i> (Drury, 1782)                         | Forbes/Davenport |
| <i>P. anacardii nebulosa</i> (Trimen, 1881)               | Forbes           |
| <b>Genus Precis</b> Hübner, 1819                          |                  |
| <i>P. pelarga</i> (Fabricius, 1775)                       | Forbes/Davenport |
| <i>P. actia</i> Distant, 1880                             | Selb             |
| <i>P. antilope</i> (Feisthamel, 1850)                     | Davenport        |
| <i>P. tugela pyriformis</i> (Butler, 1896)                | Forbes/Davenport |
| <b>Genus Hypolimnas</b> Hübner, 1819                      |                  |
| <i>H. misippus</i> (Linnaeus, 1764)                       | Forbes           |
| <i>H. salmacis salmacis</i> (Drury, 1773)                 | Forbes/Davenport |
| <i>H. monteironis major</i> Rothschild, 1918              | Forbes/Davenport |
| <i>H. anthedon anthedon</i> (Doubleday, 1845)             | Forbes/Davenport |
| Tribe incertae sedis                                      |                  |
| <b>Genus Kallimoides</b> Shirôzu & Nakanishi, 1984        |                  |
| <i>K. rumia rattrayi</i> (Shrpe, 1904)                    | Forbes/Davenport |
| <b>Genus Vanessa</b> Dewitz, 1887                         |                  |
| <i>V. milca latifascia</i> Joicey & Talbot, 1928          | Forbes           |
| <b>Total for the subfamily Nymphalinae</b>                | <b>23</b>        |
| Subfamily Cyrestinae Guenée, 1865                         |                  |
| <b>Genus Cyrestis</b> Boisduval, 1832                     |                  |
| <i>C. camillus camillus</i> (Fabricius, 1781)             | Forbes/Davenport |
| <b>Total for the subfamily Cyrestinae</b>                 | <b>1</b>         |
| Subfamily Biblidinae Boisduval, 1833                      |                  |
| Tribe Biblidini Boisduval, 1833                           |                  |
| <b>Genus Byblia</b> Hübner, 1819                          |                  |
| <i>B. anvatara crameri</i> Aurivillius, 1894              | Forbes/Davenport |
| <i>B. ilithyia</i> (Drury, 1773)                          | Forbes/Davenport |
| <b>Genus Mesoxantha</b> Aurivillius, 1899                 |                  |
| <i>M. ethosea reducta</i> Rothschild, 1918                | Forbes/Davenport |
| <b>Genus Ariadne</b> Horsfield, 1829                      |                  |
| <i>A. enotrea suffusa</i> (Joicey & Talbot, 1921)         | Forbes/Davenport |
| <i>A. pagenstecheri</i> (Suffert, 1904)                   | Forbes/Davenport |
| <b>Genus Neptidopsis</b> Aurivillius, 1899                |                  |
| <i>N. ophione nucleata</i> Grünberg, 1911                 | Forbes/Davenport |
| <b>Genus Eurytela</b> Boisduval, 1833                     |                  |
| <i>E. hiarbas hiarbas</i> (Drury, 1782)                   | Forbes/Davenport |
| <i>E. dryope angulata</i> Aurivillius, 1899               | Forbes/Davenport |
| Tribe Epicaliini Guenée, 1865                             |                  |

|  |                  |
|--|------------------|
| <b>Genus <i>Sevenia</i> Koçak, 1996</b>                    |                  |
| <i>S. occidentalis</i> (Mabille, 1876)                     | Forbes/Davenport |
| <i>S. garega</i> (Karsch, 1892)                            | Forbes           |
| <i>S. boisduvali omisssa</i> (Rothschild, 1918)            | Forbes           |
| <b>Total for the subfamily Biblidinae</b>                  | <b>11</b>        |
| Subfamily Apaturinae Boisduval, 1840                       |                  |
| <b>Genus <i>Apaturoopsis</i> Aurivillius, 1899</b>         |                  |
| <i>A. cleochares cleochares</i> (Hewitson, 1873)           | Forbes           |
| <b>Total for the subfamily Apaturinae</b>                  | <b>1</b>         |
| Subfamily Heliconiinae Swainson, 1822                      |                  |
| Tribe Acraeini Boisduval, 1833                             |                  |
| Subtribe Acraeina Boisduval, 1833                          |                  |
| <b>Genus <i>Acraea</i> Fabricius, 1807</b>                 |                  |
| <i>A. kraka</i> Aurivillius, 1893                          | Davenport        |
| <i>A. rogersi lankesteri</i> Carpenter, 1941               | Lequeux/Bernaud  |
| <i>A. egina egina</i> (Cramer, 1775)                       | Lequeux/Bernaud  |
| <i>A. abdera abdera</i> Hewitson, 1852                     | Forbes           |
| <i>A. cepheus</i> (Linnaeus, 1758)                         | Lequeux/Bernaud  |
| <i>A. asboloplintha asboloplintha</i> Karsch, 1894         | Davenport        |
| <i>A. zetes zetes</i> (Linnaeus, 1758)                     | Bernaud          |
| <i>A. leucographa leucographa</i> Ribbe, 1889              | Davenport        |
| <i>A. quirina quirina</i> (Fabricius, 1781)                | Lequeux/Bernaud  |
| <i>A. epaea epaea</i> (Cramer, 1779)                       | Lequeux/Bernaud  |
| <i>A. parageum parageum</i> (Grose-Smith, 1900)            | Lequeux/Bernaud  |
| <i>A. schubotzi</i> (Grünberg, 1911)                       | Lequeux/Bernaud  |
| <i>A. ducarme</i> Bernaud & Pierre, 2012                   | Lequeux/Bernaud  |
| <i>A. poggei nelsoni</i> Grose-Smith & Kirby, 1892         | Bernaud          |
| <i>A. epiprotea</i> (Butler, 1874)                         | Lequeux/Bernaud  |
| <i>A. alcinoe camerunica</i> (Aurivillius, 1893)           | Forbes/Davenport |
| <i>A. consanguinea intermedia</i> (Aurivillius, 1899)      | Forbes           |
| <i>A. pseuderyta</i> Godman & Salvin, 1890                 | Lequeux/Bernaud  |
| <i>A. macarista macarista</i> (Sharpe, 1906)               | Lequeux/Bernaud  |
| <i>A. umbra hemileuca</i> (Jordan, 1914)                   | Davenport        |
| Subtribe Actinotina Henning, 1992                          |                  |
| <b>Genus <i>Telchinia</i> Hübner, 1819</b>                 |                  |
| <i>T. perenna perenna</i> (Doubleday, 1847)                | Selb/Bernaud     |
| <i>T. cinerea</i> (Neave, 1904)                            | NMS              |
| <i>T. orinata</i> (Oberthür, 1893)                         | Davenport        |
| <i>T. penelope penelope</i> (Staudinger, 1896)             | Bernaud          |
| <i>T. quirinalis</i> (Grose Smith, 1900)                   | Lequeux/Bernaud  |
| <i>T. parrhasia servona</i> (Godart, 1819)                 | Bernaud          |
| <i>T. peneleos pelasgia</i> (Grose-Smith, 1900)            | Bernaud          |
| <i>T. grosvenori</i> (Eltringham, 1912)                    | Davenport        |
| <i>T. oreas oreas</i> (Sharpe, 1891)                       | NMS              |
| <i>T. iturina</i> (Grose-Smith, 1890)                      | Bernaud          |
| <i>T. pharsalus pharsalus</i> (Ward, 1871)                 | Bernaud          |
| <i>T. encedon encedon</i> (Linnaeus, 1758)                 | Davenport        |
| <i>T. encedana</i> (Pierre, 1976)                          | Forbes           |
| <i>T. jodutta jodutta</i> (Fabricius, 1793)                | Bernaud          |
| <i>T. aurivillii aurivillii</i> (Staudinger, 1896)         | Bernaud          |
| <i>T. alcipoides</i> (Joicey & Talbot, 1921)               | Lequeux/Bernaud  |
| <i>T. lycoa</i> (Godart, 1819)                             | Bernaud          |
| <i>T. serena</i> (Fabricius, 1775)                         | Davenport        |
| <i>T. acerata</i> (Hewitson, 1874)                         | Bernaud          |
| <i>T. althoffi rubrofasciata</i> (Aurivillius, 1895)       | Lequeux/Bernaud  |
| <i>T. uvui uvui</i> (Grose-Smith, 1890)                    | Davenport        |
| <i>T. bonasia bonasia</i> (Fabricius, 1775)                | Bernaud          |
| <i>T. sotikensis sotikensis</i> (Sharpe, 1892)             | Davenport        |
| <i>T. viviana</i> (Staudinger, 1896)                       | Davenport        |
| <i>T. orestia orestia</i> (Hewitson, 1874)                 | Lequeux/Bernaud  |
| Tribe Vagrantini Pinratana & Eliot, 1996                   |                  |
| <b>Genus <i>Lachnoptera</i> Doubleday, 1847</b>            |                  |
| <i>L. anticlia</i> (Hübner, 1819)                          | Davenport        |
| <b>Genus <i>Phalanta</i> Horsfield, 1829</b>               |                  |
| <i>P. phalantha aethiopica</i> (Rothschild & Jordan, 1903) | Forbes           |

|   |                  |
|---|------------------|
| <i>P. eurytis eurytis</i> (Doubleday, 1847)                   | Forbes/Davenport |
| Tribe Argynnini Swainson, 1833                                |                  |
| Subtribe Argynnina Swainson, 1833                             |                  |
| <b>Genus <i>Issoria</i> Hübner, 1819</b>                      |                  |
| <i>I. baumannii excelsior</i> (Butler, 1896)                  | Forbes/Davenport |
| <b>Total for the subfamily Heliconiinae</b>                   | <b>49</b>        |
| Subfamily Limentitidinae Behr, 1864                           |                  |
| Tribe Pseudoneptini Dhungel & Wahlberg, 2018                  |                  |
| <b>Genus <i>Pseudoneptis</i> Snellen, 1882</b>                |                  |
| <i>P. bugandensis ianthe</i> Hemming, 1964                    | Forbes/Davenport |
| Tribe Cymothoini Dhungel & Wahlberg, 2018                     |                  |
| <b>Genus <i>Cymothoe</i> Hübner, 1819</b>                     |                  |
| <i>C. beckeri theodosia</i> Staudinger, 1890                  | Forbes           |
| <i>C. confusa</i> Aurivillius, 1887                           | Forbes/Davenport |
| <i>C. cyclades</i> (Ward, 1871)                               | Forbes/Davenport |
| <i>C. ochreata</i> Grose Smith, 1890                          | Forbes/Davenport |
| <i>C. lurida tristis</i> Overlaet, 1952                       | Forbes/Davenport |
| <i>C. colmanti</i> Aurivillius, 1898                          | Forbes           |
| <i>C. haynae diphya</i> Karsch, 1894                          | Forbes           |
| <i>C. herminia johnstoni</i> (Butler, 1902)                   | Forbes           |
| <i>C. caenis</i> (Drury, 1773)                                | Forbes/Davenport |
| <i>C. coccinata vrydaghi</i> Overlaet, 1944                   | Forbes/Davenport |
| <i>C. reginaeelisabethae reginaeelisabethae</i> Holland, 1920 | Forbes/Davenport |
| <i>C. sangaris sangaris</i> (Godart, 1824)                    | Forbes/Davenport |
| <i>C. hobarti hobarti</i> Butler, 1900                        | Forbes/Davenport |
| <i>C. jodutta mostinckxi</i> Overlaet, 1952                   | Forbes/Davenport |
| <i>C. meridionalis ghesquierei</i> Overlaet, 1944             | Forbes           |
| <b>Genus <i>Harma</i> Doubleday, 1848</b>                     |                  |
| <i>H. theobene superna</i> (Fox, 1968)                        | Forbes/Davenport |
| Tribe Neptini Newman, 1870                                    |                  |
| <b>Genus <i>Neptis</i> Fabricius, 1807</b>                    |                  |
| <i>N. saclava marpessa</i> Hopffer, 1855                      | Forbes/Davenport |
| <i>N. conspicua</i> Neave, 1904                               | Davenport        |
| <i>N. constantiae constantiae</i> Carcasson, 1961             | Forbes           |
| <i>N. metanira</i> Holland, 1892                              | Selb             |
| <i>N. metella metella</i> (Doubleday, 1850)                   | Forbes/Davenport |
| <i>N. nysiades</i> Hewitson, 1868                             | Forbes           |
| <i>N. nemetes margueriteae</i> Fox, 1968                      | Forbes/Davenport |
| <i>N. nicomedes</i> Hewitson, 1874                            | Davenport        |
| <i>N. strigata kakamega</i> Collins & Larsen, 1996            | Davenport/Selb   |
| <i>N. nicoteles</i> Hewitson, 1874                            | Davenport        |
| <i>N. melicerta</i> (Drury, 1773)                             | Forbes/Davenport |
| <i>N. agouale parallela</i> Collins & Larsen, 1996            | Selb             |
| <i>N. lermanni</i> Aurivillius, 1896                          | Davenport        |
| <i>N. trigonophora intermedia</i> Schultze, 1920              | Forbes/Selb      |
| <i>N. kiriakoffi</i> Overlaet, 1955                           | Selb             |
| <i>N. serena serena</i> Overlaet, 1955                        | Selb             |
| <i>N. morosa</i> Overlaet, 1955                               | Forbes           |
| <i>N. seeldrayersi</i> Aurivillius, 1895                      | Davenport        |
| <i>N. alta</i> Overlaet, 1955                                 | Selb             |
| <i>N. ochracea ochracea</i> Neave, 1904                       | Davenport        |
| <i>N. continuata</i> Holland, 1892                            | Davenport        |
| Tribe Adoliadini Doubleday, 1845                              |                  |
| Subtribe Bebearina Hemming, 1960                              |                  |
| <b>Genus <i>Evena</i> Westwood, 1850</b>                      |                  |
| <i>E. crithea</i> (Drury, 1773)                               | Forbes/Davenport |
| <i>E. angustatum</i> (Felder & Felder, 1867)                  | Forbes/Davenport |
| <i>E. oberthueri</i> (Karsch, 1894)                           | LepSoc Africa    |
| <b>Genus <i>Aterica</i> Boisduval, 1833</b>                   |                  |
| <i>A. galene extensa</i> Heron, 1909                          | Forbes/Davenport |
| <b>Genus <i>Pseudargynnis</i> Karsch, 1892</b>                |                  |
| <i>P. hegemon</i> (Godart, 1819)                              | Forbes/Davenport |
| <b>Genus <i>Cynandra</i> Schatz, 1887</b>                     |                  |
| <i>C. opis bernardii</i> Lagnel, 1967                         | Forbes/Davenport |
| <b>Genus <i>Eurypura</i> Staudinger, 1891</b>                 |                  |

|   |                  |
|---|------------------|
| <i>E. chalcis chalcis</i> (Felder & Felder, 1860)   | Forbes           |
| <i>E. plautilla</i> (Hewitson, 1865)                | Forbes           |
| <b>Genus <i>Euphaedra</i> Hübner, 1819</b>          |                  |
| <i>E. medon inaequalis</i> Thunberg, 1904           | Forbes/Davenport |
| <i>E. zaddachi crawshayi</i> Butler, 1895           | Forbes           |
| <i>E. mirabilis nubila</i> Heccq, 1986              | Forbes           |
| <i>E. caerulea caerulea</i> Grose-Smith, 1890       | Forbes           |
| <i>E. christyi</i> Sharpe, 1904                     | Forbes           |
| <i>E. eberti hamus</i> Berger, 1940                 | Forbes           |
| <i>E. diffusa diffusa</i> Gaede, 1916               | Forbes/Davenport |
| <i>E. imitans</i> Holland, 1893                     | Forbes           |
| <i>E. sarita sarita</i> (Sharpe, 1891)              | Forbes           |
| <i>E. sardetta</i> Gaede, 1916                      | Forbes           |
| <i>E. viridicaerulea nitidula</i> van Someren, 1935 | Forbes           |
| <i>E. preussi preussi</i> Staudinger, 1891          | Forbes           |
| <i>E. albofasciata</i> Berger, 1981                 | Forbes           |
| <i>E. eleus eleus</i> (Drury, 1782)                 | Forbes/Davenport |
| <i>E. hybrida</i> Heccq, 1978                       | Forbes           |
| <i>E. alacris</i> Heccq, 1978                       | Forbes           |
| <i>E. rattrayi rattrayi</i> Sharpe, 1904            | Forbes           |
| <i>E. ruspina</i> (Hewitson, 1865)                  | Forbes           |
| <i>E. edwardsii langouensis</i> Oremans, 2010       | Forbes/Davenport |
| <i>E. harpalyce spatiosa</i> (Mabille, 1876)        | Forbes/Davenport |
| <b>Genus <i>Euriphene</i> Boisduval, 1847</b>       |                  |
| <i>E. ribensis</i> (Ward, 1871)                     | Forbes/Davenport |
| <i>E. atossa australis</i> d'Abbrera, 1980          | Forbes/Davenport |
| <i>E. amaranta</i> (Karsch, 1894)                   | Forbes/Glasgow   |
| <i>E. saphirina saphirina</i> (Karsch, 1894)        | Forbes/Davenport |
| <b>Genus <i>Bebearia</i> Hemming, 1960</b>          |                  |
| <i>B. carshena</i> (Hewitson, 1871)                 | Forbes/Davenport |
| <i>B. absolon entebbiae</i> (Lathy, 1906)           | Forbes/Davenport |
| <i>B. abesa pandera</i> Heccq, 1988                 | Forbes           |
| <i>B. zonara</i> (Butler, 1871)                     | Forbes/Davenport |
| <i>B. mandinga beni</i> Heccq, 1990                 | Forbes           |
| <i>B. oxione squalida</i> (Talbot, 1928)            | Forbes           |
| <i>B. partiata</i> (Aurivillius, 1895)              | Forbes/Davenport |
| <i>B. barce maculata</i> (Aurivillius, 1912)        | Forbes/Davenport |
| <i>B. plistonax</i> (Hewitson, 1874)                | Forbes           |
| <i>B. cocalia badiana</i> (Rebel, 1914)             | Forbes/Davenport |
| <i>B. sophus audeoudi</i> (Riley, 1936)             | Forbes           |
| <i>B. seeldrayersi</i> (Aurivillius, 1899)          | Forbes/Davenport |
| <i>B. brunhilda iturina</i> (Karsch, 1894)          | Forbes/Davenport |
| <i>B. laetitoides</i> (Joicey & Talbot, 1921)       | Forbes/Davenport |
| <i>B. flaminia flaminia</i> (Staudinger, 1891)      | Forbes           |
| <b>Genus <i>Hamanumida</i> Hübner, 1819</b>         |                  |
| <i>H. daedalus</i> (Fabricius, 1775)                | Forbes/Davenport |
| Tribe Pseudacraeini Dhungel & Wahlberg, 2018        |                  |
| <b>Genus <i>Pseudacraea</i> Westwood, 1850</b>      |                  |
| <i>P. eurytus eurytus</i> (Linnaeus, 1758)          | Forbes/Davenport |
| <i>P. lucretia protracta</i> (Butler, 1875)         | Forbes/Davenport |
| <i>P. semire</i> (Cramer, 1779)                     | Forbes/Davenport |
| <i>P. warburgi</i> Aurivillius, 1892                | Selb             |
| <b>Total for the subfamily Limenitidinae</b>        | <b>90</b>        |
| <b>Total for the family Nymphalidae</b>             | <b>263</b>       |
| <b>FAMILY PIERIDAE Swainson, 1820</b>               |                  |
| Subfamily Pseudopontiinae Reuter, 1896              |                  |
| <b>Genus <i>Pseudopontia</i> Plötz, 1870</b>        |                  |
| <i>P. mabira</i> Mitter & Collins, 2011             | Selb             |
| <b>Total for subfamily Pseudopontiinae</b>          | <b>1</b>         |
| Subfamily Coliadinae Swainson, 1821                 |                  |
| <b>Genus <i>Eurema</i> Hübner, 1819</b>             |                  |
| <i>E. hecabe solifera</i> (Butler, 1875)            | Forbes/Davenport |
| <i>E. floricola leonis</i> (Butler, 1886)           | Forbes/Davenport |
| <i>E. senegalensis</i> (Boisduval, 1836)            | Forbes/Davenport |
| <i>E. desjardinsi regularis</i> (Butler, 1876)      | Forbes/Davenport |
| <i>E. hapale</i> (Mabille, 1882)                    | Forbes/Davenport |
| <b>Genus <i>Catopsilia</i> Hübner, 1819</b>         |                  |
| <i>C. florella</i> (Fabricius, 1775)                | Forbes/Davenport |
| <b>Total for the subfamily Coliadinae</b>           | <b>6</b>         |
| Subfamily Pierinae Swainson, 1820                   |                  |

|  |                  |
|--|------------------|
| Tribe Leptosiaini Braby, 2014                          |                  |
| <b>Genus <i>Leptosia</i> Hübner, 1818</b>              |                  |
| <i>L. wigginsii wigginsii</i> (Dixey, 1915)            | Forbes/Davenport |
| <i>L. nupta pseudonupta</i> Bernardi, 1959             | Forbes/Davenport |
| <i>L. alcesta inalcesta</i> Bernardi, 1959             | Davenport        |
| Tribe Nephroniini Braby, 2014                          |                  |
| <b>Genus <i>Nepheronia</i> Butler, 1870</b>            |                  |
| <i>N. pharis silvanus</i> (Stoneham, 1957)             | Forbes/Davenport |
| <i>N. thalassina verulanus</i> (Ward, 1871)            | Forbes/Davenport |
| <i>N. argia argia</i> (Fabricius, 1775)                | Forbes/Davenport |
| <i>N. buquetii buquetii</i> (Boisduval, 1836)          | Forbes/Davenport |
| Tribe Teracolini Reuter, 1896                          |                  |
| <b>Genus <i>Colotis</i> Hübner, 1819</b>               |                  |
| <i>C. euippe complexivus</i> (Butler, 1886)            | Forbes/Davenport |
| <i>C. hetaera ankolensis</i> Stoneham, 1940            | Selb             |
| <i>C. elgonensis basilewskyi</i> Berger, 1956          | Davenport        |
| <i>C. antevippe zera</i> (Lucas, 1852)                 | Forbes/Davenport |
| <b>Genus <i>Eronia</i> Hübner, 1823</b>                |                  |
| <i>E. cleodora</i> Hübner, 1823                        | Forbes/Davenport |
| <b>Genus <i>Afrodryas</i> Stoneham, 1957</b>           |                  |
| <i>A. leda</i> (Boisduval, 1847)                       | Selb             |
| Tribe Pierini Swainson, 1820                           |                  |
| Subtribe Appiadina Kuzsenov, 1921                      |                  |
| <b>Genus <i>Appias</i> Hübner, 1819</b>                |                  |
| <i>A. sabina sabina</i> (Felder & Felder, 1865)        | Davenport        |
| <i>A. phaola intermedia</i> Dufrene, 1848              | Forbes/Davenport |
| <i>A. epaphia epaphia</i> (Cramer, 1779)               | Forbes/Davenport |
| Subtribe Aporiina Chapman, 1895                        |                  |
| <b>Genus <i>Belenois</i> Hübner, 1819</b>              |                  |
| <i>B. creona severina</i> (Stoll, 1781)                | Forbes/Davenport |
| <i>B. aurota</i> (Fabricius, 1793)                     | Forbes           |
| <i>B. crawshayi</i> Butler, 1894                       | Davenport        |
| <i>B. calypso minor</i> Talbot, 1943                   | Davenport        |
| <i>B. thysa meldolae</i> Butler, 1872                  | Forbes/Davenport |
| <i>B. theora laeta</i> (Weymer, 1903)                  | Selb             |
| <i>B. solilucis loveni</i> (Aurivillius, 1921)         | Forbes/Davenport |
| <b>Genus <i>Dixeia</i> Talbot, 1932</b>                |                  |
| <i>D. pigea</i> (Boisduval, 1836)                      | Davenport        |
| <b>Genus <i>Mylothris</i> Hübner, 1819</b>             |                  |
| <i>M. chloris chloris</i> (Fabricius, 1775)            | Forbes/Davenport |
| <i>M. rhodope</i> (Fabricius, 1775)                    | Forbes/Selb      |
| <i>M. continua continua</i> Talbot, 1944               | Forbes           |
| <b>Total for the subfamily Pierinae</b>                | <b>27</b>        |
| <b>Total for the family Pieridae</b>                   | <b>34</b>        |
| <b>FAMILY RIODINIDAE Grote, 1895</b>                   |                  |
| Subfamily Nemeobiinae Bates, 1868                      |                  |
| Tribe Abisarini Stichel, 1928                          |                  |
| Subtribe Abisarina Stichel, 1928                       |                  |
| <b>Genus <i>Afriodinia</i> d'Abbrera, 2009</b>         |                  |
| <i>A. neavei neavei</i> (Riley, 1932)                  | Unknown          |
| <b>Total for the family Riodinidae</b>                 | <b>1</b>         |
| <b>FAMILY LYCAENIDAE Leach, 1815</b>                   |                  |
| Subfamily Poritiinae Doherty, 1886                     |                  |
| Tribe Pentilini Aurivillius, 1914                      |                  |
| <b>Genus <i>Ptelina</i> Clench, 1965</b>               |                  |
| <i>P. carnuta</i> (Hewitson, 1873)                     | Selb             |
| <b>Genus <i>Pentila</i> Westwood, 1851</b>             |                  |
| <i>P. pauli clarensis</i> Neave, 1903                  | Davenport/Selb   |
| <i>P. umangiana connectens</i> Hulstaert, 1924         | Davenport/Selb   |
| <i>P. inconspicua</i> Druce, 1910                      | Davenport/Selb   |
| <i>P. tachyroides tachyroides</i> Dewitz, 1879         | Selb             |
| <i>P. cloetensi catauga</i> Rebel, 1914                | Selb             |
| <b>Genus <i>Liptenara</i> Bethune-Baker, 1915</b>      |                  |
| <i>L. hiendlmayri</i> (Dewitz, 1887)                   | Davenport        |
| <b>Genus <i>Telipna</i> Aurivillius, 1895</b>          |                  |
| <i>T. aurivillii jefferyi</i> Jackson, 1969            | Forbes/Davenport |
| <i>T. sanguinea depuncta</i> Talbot, 1937              | Forbes/Davenport |
| <i>T. consanguinea consanguinea</i> Rebel, 1914        | Selb             |
| <i>T. nyanza katangae</i> Stempffer, 1961              | Selb             |
| <b>Genus <i>Ornipholidotos</i> Bethune-Baker, 1914</b> |                  |
| <i>O. overlaeti intermedia</i> Libert, 2005            | Davenport        |

|   |                  |
|---|------------------|
| <i>O. jacksoni jacksoni</i> Stempffer, 1961               | Selb             |
| Tribe Liptenini Röber, 1892                               |                  |
| <b>Genus <i>Liptena</i> Westwood, 1851</b>                |                  |
| <i>L. opaca ugandana</i> Stempffer, Bennett & May, 1974   | Forbes           |
| <i>L. xanthostola xantha</i> (Grose-Smith, 1901)          | Davenport/Selb   |
| <i>L. praestans</i> Schultze, 1923                        | Davenport/Selb   |
| <b>Genus <i>Tetrarhanis</i> Karsch, 1893</b>              |                  |
| <i>T. ilala ilala</i> (Riley, 1929)                       | Forbes           |
| <i>T. ilma ugandae</i> (Stempffer, 1964)                  | Davenport/Selb   |
| <b>Genus <i>Falcuna</i> Stempffer &amp; Bennett, 1963</b> |                  |
| <i>F. margarita</i> (Suffert, 1904)                       | Davenport        |
| <i>F. orientalis bwamba</i> Stempffer & Bennett, 1963     | Selb             |
| <b>Genus <i>Larinopoda</i> Butler, 1871</b>               |                  |
| <i>L. tera</i> (Hewitson, 1873)                           | Davenport/Selb   |
| <i>L. lagyra lagyra</i> (Hewitson 1866)                   | Davenport/Selb   |
| <b>Genus <i>Citrinophila</i> Kirby, 1887</b>              |                  |
| <i>C. erastus pallida</i> Hawker-Smith, 1933              | Forbes           |
| <b>Genus <i>Toxochitona</i> Stempffer, 1956</b>           |                  |
| <i>T. sankuru</i> Stempffer, 1961                         | Davenport        |
| <b>Genus <i>Mimacraea</i> Butler, 1872</b>                |                  |
| <i>M. landbecki</i> Druce, 1910                           | Forbes           |
| <i>M. krausei krausei</i> Dewitz, 1889                    | Forbes/Davenport |
| <b>Genus <i>Mimeresia</i> Stempffer, 1961</b>             |                  |
| <i>M. drucei ugandae</i> (Stempffer, 1954)                | Forbes           |
| <i>M. moreelsi purpurea</i> (Hawker-Smith, 1933)          | Forbes           |
| Tribe Epitolini Jackson, 1962                             |                  |
| <b>Genus <i>Epitola</i> Westwood, 1851</b>                |                  |
| <i>E. uranoides uranoides</i> Libert, 1999                | Selb             |
| <i>E. urania</i> Kirby, 1887                              | Forbes           |
| <b>Genus <i>Cerautola</i> Libert, 1999</b>                |                  |
| <i>C. mittoni</i> (Jackson, 1964)                         | NMK              |
| <i>C. subargentea subargentea</i> (Jackson, 1965)         | Selb             |
| <b>Genus <i>Geritola</i> Libert, 1999</b>                 |                  |
| <i>G. cynaea</i> (Jackson, 1964)                          | Davenport        |
| <b>Genus <i>Stempfferia</i> Jackson, 1962</b>             |                  |
| <i>S. cercenoides</i> (Holland, 1890)                     | Davenport        |
| <i>S. tumentia</i> (Druce, 1910)                          | Davenport        |
| <b>Genus <i>Cephetola</i> Libert, 1999</b>                |                  |
| <i>C. bwamba</i> (Jackson, 1964)                          | NMK              |
| <i>C. pinodes budduana</i> (Talbot, 1937)                 | Selb             |
| <b>Genus <i>Epitolina</i> Aurivillius, 1895</b>           |                  |
| <i>E. dispar</i> (Kirby, 1887)                            | Selb             |
| <b>Genus <i>Phytala</i> Westwood, 1851</b>                |                  |
| <i>P. elais ugandae</i> Jackson, 1964                     | Forbes/Selb      |
| <b>Genus <i>Hewitsonia</i> Kirby, 1871</b>                |                  |
| <i>H. ugandae ugandae</i> Jackson, 1962                   | Selb             |
| <i>H. inexpectata</i> Bouyer, 1997                        | Selb             |
| <i>H. intermedia</i> Jackson, 1962                        | Forbes/Selb      |
| <b>Total for the subfamily Poritiinae</b>                 | <b>42</b>        |
| Subfamily Miletinae Reuter, 1896                          |                  |
| Tribe Lachnocnemini Clench, 1955                          |                  |
| <b>Genus <i>Lachnocnema</i> Trimen, 1887</b>              |                  |
| <i>L. exiguus</i> Holland, 1890                           | Selb             |
| Tribe Spalgini Toxopeus, 1929                             |                  |
| <b>Genus <i>Spalgis</i> Moore, 1879</b>                   |                  |
| <i>S. jacksoni jacksoni</i> Stempffer, 1967               | Selb             |
| Tribe Miletini Reuter, 1896                               |                  |
| <b>Genus <i>Megalopalpus</i> Röber, 1886</b>              |                  |
| <i>M. simplex</i> Röber, 1886                             | Selb             |
| <i>M. metaleucus</i> Karsch, 1893                         | Selb             |
| <i>M. zymna</i> (Westwood, 1851)                          | Forbes/Davenport |
| <b>Total for the subfamily Miletinae</b>                  | <b>5</b>         |
| Subfamily Aphnaeinae Distant, 1884                        |                  |
| <b>Genus <i>Aphnaeus</i> Hübner, 1819</b>                 |                  |
| <i>A. arcas</i> (Drury, 1782)                             | Forbes/Davenport |
| <b>Total for the subfamily Aphnaeinae</b>                 | <b>1</b>         |

|  |                  |
|--|------------------|
| Subfamily Polyommatae Swainson, 1827                 |                  |
| Tribe Lycaenesthinae Toxopeus, 1929                  |                  |
| <b>Genus <i>Anthene</i> Doubleday, 1847</b>          |                  |
| <i>A. larydas</i> (Cramer, 1780)                     | Davenport/Selb   |
| <i>A. crawshayi crawshayi</i> (Butler, 1899)         | Selb             |
| <i>A. ligures ligures</i> (Hewitson, 1874)           | Davenport/Selb   |
| <i>A. sylvanus</i> (Drury, 1773)                     | Selb             |
| <i>A. rubricinctus rubricinctus</i> (Holland, 1891)  | Davenport        |
| <i>A. ituria</i> (Bethune-Baker, 1910)               | Davenport/Selb   |
| <i>A. princeps</i> (Butler, 1876)                    | Selb             |
| <i>A. liodes liodes</i> (Hewitson, 1874)             | Selb             |
| <b>Genus <i>Neurellipes</i> Bethune-Baker, 1910</b>  |                  |
| <i>N. fulvimacula</i> (Mabille, 1890)                | Davenport        |
| <i>N. kampala triangularis</i> Libert, 2010          | Selb             |
| <i>N. scintillula scintillula</i> (Holland, 1891)    | Davenport        |
| <b>Genus <i>Triclema</i> Karsch, 1893</b>            |                  |
| <i>T. staudingeri</i> (Grose-Smith & Kirby, 1894)    | Davenport        |
| <i>T. phoenicis</i> Karsch, 1893                     | Selb             |
| <i>T. inconspicua latefascia</i> Libert, 2010        | Forbes/Selb      |
| Tribe Polyommatae Swainson, 1827                     |                  |
| Subtribe <i>incertae sedis</i>                       |                  |
| <b>Genus <i>Cupidopsis</i> Karsch, 1895</b>          |                  |
| <i>C. cissus cissus</i> (Godart, 1824)               | Selb             |
| <b>Genus <i>Pseudonacaduba</i> Stempffer, 1943</b>   |                  |
| <i>P. aethiops</i> (Mabille, 1877)                   | Davenport/Selb   |
| <i>P. sichela sichela</i> Wallengren, 1857)          | Davenport        |
| <b>Genus <i>Uranothauma</i> Butler, 1895</b>         |                  |
| <i>U. falckensteini</i> (Dewitz, 1879)               | Davenport/Selb   |
| <i>U. cyara tenuimarginata</i> (Grünberg, 1908)      | Davenport/Selb   |
| <b>Genus <i>Cacyreus</i> Butler, 1897</b>            |                  |
| <i>C. lingeus</i> (Stoll, 1782)                      | Davenport/Selb   |
| <i>C. audeoudi</i> Stempffer, 1936                   | Davenport/Selb   |
| <b>Genus <i>Leptotes</i> Scudder, 1876</b>           |                  |
| <i>L. pirithous pirithous</i> (Linnaeus, 1767)       | Selb             |
| <i>L. marginalis</i> (Stempffer, 1942)               | Selb             |
| <b>Genus <i>Tuxentius</i> Larsen, 1982</b>           |                  |
| <i>T. margaritaceus</i> (Sharpe, 1892)               | Davenport/Selb   |
| <b>Genus <i>Zizeeria</i> Chapman, 1910</b>           |                  |
| <i>Z. krynsna krynsna</i> (Trimen, 1862)             | Selb             |
| <b>Genus <i>Actizera</i> Chapman, 1910</b>           |                  |
| <i>A. lucida</i> (Trimen, 1883)                      | Selb             |
| <b>Genus <i>Zizula</i> Chapman, 1910</b>             |                  |
| <i>Z. hylax</i> (Fabricius, 1775)                    | Davenport        |
| <b>Genus <i>Azanus</i> Moore, 1881</b>               |                  |
| <i>A. isis</i> Drury, 1773                           | Davenport/Selb   |
| <i>A. mirza</i> (Plötz, 1880)                        | Forbes/Selb      |
| <i>A. moriqua</i> (Wallengren, 1857)                 | Selb             |
| <i>A. natalensis</i> (Trimen, 1887)                  | Davenport        |
| <b>Genus <i>Eicochrysops</i> Bethune-Baker, 1924</b> |                  |
| <i>E. hippocrates</i> (Fabricius, 1793)              | Forbes/Davenport |
| <b>Genus <i>Euchrysops</i> Butler, 1900</b>          |                  |
| <i>E. osiris</i> (Hopffer, 1855)                     | Davenport        |
| <i>E. barkeri</i> (Trimen, 1893)                     | Davenport/Selb   |
| <b>Genus <i>Thermoniphas</i> Karsch, 1895</b>        |                  |
| <i>T. alberici</i> (Dufrane, 1945)                   | Forbes/Davenport |
| <i>T. distincta</i> (Talbot, 1935)                   | Davenport        |
| <i>T. fontainei</i> Stempffer, 1956                  | Forbes           |
| <b>Genus <i>Oboronia</i> Karsch, 1893</b>            |                  |
| <i>O. punctatus</i> (Dewitz, 1879)                   | Forbes/Davenport |
| <i>O. pseudopunctatus</i> (Strand, 1912)             | Forbes/Davenport |
| <i>O. guessfeldtii</i> (Dewitz, 1879)                | Davenport        |
| <b>Total for the subfamily Polyommatae</b>           | <b>40</b>        |
| Subfamily Theclinae Swainson, 1830                   |                  |
| Tribe Amblypodini Doherty, 1886                      |                  |
| <b>Genus <i>Myrina</i> Fabricius, 1807</b>           |                  |
| <i>M. sharpei sharpei</i> Bethune-Baker, 1906        | Williams/Dobson  |
| Tribe Iolaini Riley, 1958                            |                  |



|   |                  |
|---|------------------|
| <b>Genus <i>Iolais</i> Hübner, 1819</b>                 |                  |
| <i>I. bellina exquisita</i> (Riley, 1928)               | Selb             |
| <i>I. pollux albocaerulea</i> (Riley, 1929)             | Forbes           |
| Tribe Hypolycaenini Swinhoe, 1910                       |                  |
| <b>Genus <i>Hypolycaena</i> Felder, 1862</b>            |                  |
| <i>H. antifaunus latimacula</i> (Joicey & Talbot, 1921) | Davenport/Selb   |
| <i>H. philippus philippus</i> (Fabricius, 1793)         | Davenport/Selb   |
| <i>H. nigra</i> Bethune-Baker, 1914                     | Davenport        |
| <i>H. hatita ugandae</i> Sharpe, 1904                   | Forbes/Davenport |
| Tribe Oxylidini Eliot, 1973                             |                  |
| <b>Genus <i>Oxyliodes</i> Hübner, 1819</b>              |                  |
| <i>O. albata</i> (Aurivillius, 1895)                    | Forbes/Selb      |
| <i>O. feminina feminina</i> (Sharpe, 1904)              | Selb             |
| Tribe Deudorigini Doherty, 1886                         |                  |
| <b>Genus <i>Deudorix</i> Hewitson, 1863</b>             |                  |
| <i>D. antalus</i> (Hopffer, 1855)                       | Davenport        |
| <b>Total for the subfamily Theclinae</b>                | <b>10</b>        |
| <b>Total for the family Lycaenidae</b>                  | <b>98</b>        |
| <b>Species total</b>                                    | <b>448</b>       |