



Constructions of Traditional Womanhood in Botswana Myths and Popular Culture

Connie Rapoo

*Department of English and in the Visual and Performing Arts, University of Botswana, Private Bag UB00703, Gaborone, Botswana, Southern Africa
(+267) 355-2187 (office); (+267) 71303866 (home);(+267) 77101747
(mobile); rapooconnie@gmail.com*

ABSTRACT

Mythic-historical narratives, oral legends, popular culture, and traditional marriage rituals offer African traditional forms of performance that shed light on the nature of sexual politics in Africa as well as practices of black female expression and popular resistance. These performance forms contribute to the circulation of negative constructions of black African women. This article sets up a genealogy of the image that begins with oral narratives and continues through portrayals of actual women. It examines misogynistic and stereotypical depictions of women in the Botswana collective cultural imaginary and in transnational forms of representation.

Key terms: Botswana popular culture, feminine identities, exoticized sexuality.

INTRODUCTION

Myth and the Construction of Feminine Identities

Popular culture forms, folkloric elements, and other traditional narrative formations operate as cultural memory to inform the perception of actual women in Botswana and other parts of Africa. These cultural forms of performance offer a social commentary on the nature of African sexual politics, gender polarities, and patriarchal ideologies. They dramatize stereotypical portraits that help justify women's subjugation. Prevalent in

Constructions of Traditional Womanhood in Botswana

Botswana popular culture are the female iconic figures of warrior, witch, and whore, all of which are used stereotypically to construct perceived female deviance and maliciousness. This article suggests that the female archetypal figure in these performance traditions and popular cultural processes elaborates feminist resistance and assertiveness against colonial and patriarchal prejudices.

Three popular narratives and myths about women from Botswana are the narrative of Queen Mantatisi “the warrior queen”, the myth of the “Night Seducer”, and the legend of the Ghost of Mmamashia. I analyze these mythological formulations to highlight their use in constructing traditionalized African womanhood, particularly in the Botswana cultural imaginary. These mythic imaginings operate as cultural memory to inform the perception of actual women. The myths partake in the historical and cultural construction of gender norms and feminine identities in Botswana, and in particular, corroborate notions of “appropriate” femininity. The gendered perceptions of women are also prevalent in wedding songs and other cultural processes that underscore appropriate behavior for women.

METHODOLOGY

This project adopts qualitative processes of inquiry and data collection. Although statistical variables are noted, the research privileges the interpretative perspective by focusing more on the function, signification, and ideological meanings embedded in the songs, myths, and images of women in Botswana. Research approaches used to collect data for this project include snowballing sampling, semi-structured interviews with open-ended questions, participant-observation, taking photographs at curio shops, and sampling cartoons of African political female figures in print and electronic media. Other approaches used are transcriptions and translations of traditional Botswana wedding songs and indigenous songs about women. The data on wedding songs and marriage rites was gathered at wedding ceremonies in the villages of Tlokwen, Mochudi, and Dikwididi. The findings were supplemented by the researcher’s observations and discussions with elderly informers from the three research sites. Field notes of interpretations and explanations of songs by informants were taken and transcribed. Songs about women and by female performers were also sampled from the Radio Botswana program of *Dipina le Maboko* that broadcasts indigenous Botswana music and poetry. A close critical reading of song lyrics, mythic narratives, and marriage rituals was deployed using the analytic approaches of theatre and performance studies.

Connie Rapoo

The researcher also conducted interviews at Mowana Lodge, a tourist site that displays material culture in Kasane, Northern Botswana. A seminar presentation of the pilot research findings was presented during the English department seminar series at the University of Botswana. The presentation facilitated more data collection and sharpened the critical tools of analysis to substantiate my theorizing of the portrayal of women in the Botswana collective cultural imaginary.

The Wicked African Warrior Queen

The historical narrative of Queen Mantatisi informs the broad social perception of real African women, as will be illustrated in the figure of Winnie Mandela. The story of Queen Mantatisi evolved from the actual historical figure of the regent of the Batlokwa people who ruled during the Lifaqane pre-colonial wars of Southern Africa in the 19th Century. The Lifaqane wars staged militaristic empire expansions led by rulers such as Shaka of the Zulu and other kings such as Mzilikazi and Moshoeshe. Hordes of conquering armies led by these rulers invaded and annihilated their neighbors and confiscated their possessions. Queen Mantatisi led the Batlokwa, the so-called “Wild Cat People” during these battles, and as Peter Becker (1968) observes, she was memorialized not only as “the most fascinating female African conqueror of all time” but also as a “ruthless conqueror, utterly callous to human suffering.” She was the daughter of King Mothaba of the Basia, and she married Makotja, king of the Batlokwa. Queen Mantatisi took regency for her minor son Sikonyela, following the death of her husband. Despite opposition from the royal house of the group that she led, including civil war and threats to kill her, she remained astute and steadfast, ruling as a regent until her son was successfully enthroned. Her military conquest stretched across pre-colonial South Africa into modern-day Botswana. Queen Mantatisi’s political power and military prowess were recorded in numerous folk traditions and archives. Tales of her simultaneously destructive and nurturing powers proliferated in both Botswana and South Africa, following her expansionist war expeditions. Her exploits earned her the label of “honorary man” (Eldredge 1993).

The narrative of Mantatisi partakes in the collective historical and cultural memory that constructed sovereignty as a masculine space. In pre-colonial Africa, including Botswana, the notion of sovereignty was culturally constituted to reflect good governance and leadership prowess as inherently male attributes. This belief informed the perception of female leaders such as Queen Mantatisi as cultural curios. The popular narrative, however, is significant in circulating a memory of such women who challenged the prejudices against female leaders in pre-colonial Africa. As a military leader with political power, Mantatisi sought not only to establish her own kingdom and to secure the enthronement of her son, but to also subvert the tradition of ascribing women the stereotypical role of royal wives, whose lives were circumscribed by notions of domesticity. The narrative draws attention to the

Constructions of Traditional Womanhood in Botswana

existence of royal women who exercised female agency domestically, intellectually, and politically.

The popular descriptions of Mantatisi's legendary war expeditions functioned to construct her as a bloodthirsty war monster who relished in bloodshed. This form of characterization was possibly motivated by misogyny. The act of dehumanizing her recalls stereotypes of female malice. Even more pointedly, and in accordance with the Setswana proverb that *Ga di ke di etelelwa ke manamagadi pele*, a proverb that animates the principle that men rule and women obey, Mantatisi's exercising of her political agency to build a strong community is trivialized, and contained through ideas of monstrosity. The narrative construction of Mantatisi works in collusion with the gendered perception of traditional women in Botswana popular consciousness as being incapable of leadership, as reflected in the proverb.

Mantatisi's virility was further captured in grotesque visual representations in oral narratives. She is rumored to have been a gigantic woman with huge breasts. It is said that before her warriors went off to battle, she would suckle them to give them power against their enemies. Her breast milk, perpetually in abundant supply, was believed to have been useful not only in healing the wounds of her warriors, but also as poison against her rivals. Peter Becker (1968) writes about a tall, grotesque "mighty woman" who headed an "invincible army, numerous as locusts, marching onward among interior nations, carrying devastation and ruin wherever she went; that she nourished the army with her own milk, sent hornets before it, and ... was laying the world desolate." Although the myth of Queen Mantatisi largely masculinized her, it simultaneously transfigures her body as a site of intervention. The narrativization of breast-feeding hordes of warriors appropriates a discourse of female corporeality to generate value to a female body. This is a cultural process that creatively asserts female power and agency.

Mantatisi's transfiguration through the discourse of female body politics deconstructs the "masks of patriarchal production", as feminist theorist and performance critic Sue-Ellen Case (1985) would have it. Case elaborates the concept of "Woman", the fictional gender created through patriarchal culture. "This "Woman", Case argues, "appeared on the stage, in myths, and in the plastic arts, representing the patriarchal values attached to the gender of "Woman" while suppressing the experiences, stories, feelings, and fantasies of actual women" (1985: 318). The actual woman Mantatisi disrupts the patriarchal construction of the idealized "Woman" within the cultural and/or folkloristic landscape of Botswana. Through acts of gender reversal, Mantatisi appropriates the popular constructs of African "warrior" to creatively redefine female power and agency.

The performance of cultural memory through myths like that of Queen Mantatisi informs the perception of actual women in contemporary African societies. A good illustration is the depiction of Winnie Mandela in South African popular culture. The representation of Winnie in these cultural forms elaborates perceptions of wicked African/and or Black women through

Connie Rapoo

portraits of the female warrior, sorcerer, and deceiver. In the years of apartheid, Winnie Mandela headed the African National Congress Women's League, and was revered by her supporters as "Mother of the Nation". When constructed as "Mother of the Nation", Winnie animates the political nurturer who saw all black South Africans as a collectivity. Following the Truth and Reconciliation Commission's investigations, she was convicted of abduction and assault in connection with the death of a 14-year-old boy known as Stompie Seipei. She was also convicted on charges of fraud and theft. These charges tarnished her image so much that she was dubbed "Mugger of the Nation" by her rivals (Hawthorne 1997). Winnie's depiction recalls aspects of the unfeminine, domineering matriarch and destructive warrior that Mantatisi engendered. The perception is particularly instructive as it depicts an embodiment of contrasting virtues of reproduction and violence; fear and desire.

Winnie's image in contemporary forms of popular culture builds upon the image of Mantatisi—the surrogate military commander who sowed seeds of destruction. This type of imaging is evident in the creation of South African cartoonist illustrator, Jonathan Shapiro, popularly known as Zapiro. The cartoonist builds on the political memory of Winnie and South African politics conjoined with the memory of Shakespearean dramatic representations of women.



Figure 1: Winnie Mandela as Lady Macbeth. Cartoon © Zapiro. Reproduced in Pieter-Dirk Uys (2002).

Zapiro's "Lady Macdela" is haunted by her political mishaps, and recalls the case of 14-year-old Stompie. Set against a backdrop of royalty and

Constructions of Traditional Womanhood in Botswana

conspiracy, the staging of Winnie takes shape in “Lady Macdela’s Soliloquy.” Winnie’s imagined embodiment of the ruthlessness and guilt that recalls Lady Macbeth is reflected in her cry, “Out, damned spot! Out, I say!” Her royal accoutrements are in sharp contrast to the vanquished Stompie specter. Two things inform this perception of Winnie and become congruent—a Shakespearean play that is famous for its negative depiction of women in power, from witches to an evil queen, and the African historical narrative of Mantatisi. In this context, the colonial and indigenous past intertwine. This performance of memory and history of gendered representation demonstrates how indigenous acts of knowledge transfer and collective memory are conjoined with colonial forms of archiving.

The other particularly informative negative depiction of African womanhood can be seen through an infamous cartoon by Billy Chiepe about a Botswana female politician, Kathleen Letshabo.



Figure 2: Cartoonistic impression of Kathleen Letshabo. *Mmegi Monitor* (28 May, 2007).

This cartoon followed the Botswana National Front political party congress during which Letshabo lost in the contest for the position of party president against a male politician, Otsweletse Moupo. The cartoon depicts Letshabo as a badly bruised and bleeding bull being castrated, while another bull looks on from inside the cattle enclosure, presumably casting the triumphant Moupo. Heavily charged with misogynistic ideas and stereotypes, this cartoon outraged feminists and women’s rights organizations in Botswana

Connie Rapoo

and in the region, including *Gender Links* and *Gender and Media Southern Africa*. This construction is a visual articulation of the patriarchal ideology echoed in the proverb cited earlier, and corroborates the belief that women cannot be effective leaders. This conservative ideology is enhanced through another proverb which states that *poo ga di ke di tlhakanela lesaka* [two bulls never share a cattle enclosure]. Newspaper columnist Dan Moabi (2007) is correct in reading the cartoon's use of the bullfighting metaphor and its construction of Moupono as the "virtuous" bull and Letshabo as the "villainous" antagonistic one that deserves punishment. The cartoonist borrows from these proverbial principles as well as mythic-historic narratives such as the Mantatisi legend to throw caution at "uncharacteristic" females who traverse the boundaries of gendered roles and culturally masculinized spaces. The political scenarios embodied by the female figures of Winnie Mandela, Kathleen Letshabo and Mmantatisi are good accounts of African women's agency, and their creative and political power. These examples underscore the political accomplishments of African women in the country and across the continent, as evidenced by their imaging as queens, regents, and politicians who offer creative and alternative ways of performing female identities (Salami 2003; Boris 2007; Nnaemeka 1997).

Bodiless Seductive Women

If the perception of Winnie Mandela illustrates how practices of embodiment derive from historical narratives, disembodiment symbolizes the mysterious, spiritual world. Two myths about women in Botswana illustrate these popular constructions—the myth of the Gaborone "night seducer" and the myth evoking the ghost of Mmamashia. The myth regarding the sexually suspect Gaborone night woman narrates the adventures of a female youth who was raped and killed by her lover. This mysterious woman, albeit as a disembodied figure, is now rumored to stalk men around the city of Gaborone who fall prey to her charm. Typically, this exceptionally beautiful woman seductively invites the man to her apartment. The two enjoy each other's company for the night. Only that the man wakes up to find himself sleeping on top of a grave, presumably belonging to the murdered girl, at the city cemetery!

This story emphasizes the perception of women's sexual indiscretions in the Botswana popular cultural imaginary. The Night Seducer is the vanquished figure who haunts contemporary narratives of male-female relationships in the country. Corroborated by patriarchal constructions of ideal femininity, the Seducer is conjured as the immoral female body that deserves to be justifiably subjugated through rape. The stereotype of the Night Seducer evokes the need to police her body and to characterize her as the deviant Other for trafficking in her body. Her characterization also evokes her wickedness, and reveals a fear of the mysterious spiritual world. The Gaborone Seducer's constructed seductiveness echoes qualities that are naturalized for women in traditional Botswana society. Sexual infidelity is

Constructions of Traditional Womanhood in Botswana

sanctioned for women, but not for men, as reflected in proverbs used to initiate young brides into wifehood. Such practices point towards a legacy of actual women whose sexual pleasure is constricted by expectations to fulfill their husbands' sexual pleasure and fantasies.

The conjuring of the seductive woman in the narrative echoes other myths of gender reversal where the female presumably conquers the male through emasculation. The Seducer myth animates constructions of the castrating female. She embodies the stereotype of black female promiscuity, mystique, and sorcery. Her depiction resonates with the stereotypical imaging of women in Botswana popular culture to emasculate men through evil magic and medicinal portions, as in their power to create *dikukuru* and *bopharameseseng* [wimps and eunuchs]. These men are perceived as sexually disempowered male victims of women who practice sorcery out of spite and malice.

The myth of the Ghost of Mmamashia is as follows: A long time ago, a mysterious woman died in a car accident at the crossroads of Gaborone and Mmamashia. Now, every morning between 12 and 3 am, anyone who drives past this site is bound to see this pretty lady standing right in the middle of the road. As soon as the driver sways the car to avoid hitting her, the car overturns. Stories about people's encounters with the Ghost of Mmamashia proliferate to this day in Botswana, despite spiritual healers' attempts to exorcise her spirit. With seeming impunity, the Ghost of Mmamashia constantly returns to this site to claim more unsuspecting victims.

Inscribed with equivocations of vengeance and mysticism, the myth of the Ghost of Mmamashia constructs the female figure as incarcerated. She represents the morbid female body that terrorizes society through violent, mysterious powers. The Ghost is mythologized as a cannibalized figure that returns to the site of her vanished body to "consume" other bodies. In the narrative, the Ghost is cast as the demonic vanished, disembodied female body that remains caught in the cycle of morbid female subjectivity. Yet, conjuring the ghost figure as erased actually underscores the power that comes from repressed visibility. By being re-presented through mythologized conceptualizations, the Ghost of Mmamashia re-narrates her subversive power and the possibility to draw on folkloric acts of cultural recall in order to reinforce African female agency.

The three narratives discussed above offer a critique of the complexity, the erasure, and contradictory significations of women in an African society. They serve to signify mythologized performance traditions as a site for the reinvention of black womanhood in contemporary Botswana. The stories echo a history of gendered representations, poignantly reflected through the continued negative constructions of female Otherness. Tropes of conquest, suppression, and female dissidence permeate these narratives. Yet their continued circulation, perhaps inadvertently, suggest a narrative site for possibilities of female identity re-articulation. Echoing a history of the female body as racialized and gendered, the narratives imbricate actual post-

Connie Rapoo

colonial black African female political figures that perform female assertiveness.

Marriage rituals

Wedding songs and marriage rituals provide a glimpse into the way gender identities in Botswana are historicized and transmitted. These performance practices partake in constructions of femininities and masculinities. The wedding ceremony is a highly theatrical scenario and a live repertoire of knowledge transfer (Taylor 2003). The figure of the uncle, particularly, is essential as a director of the marriage transaction, particularly the battering process of the bride-wealth. The wedding scenario also encapsulates rehearsed, repeatable, and transferable forms such as costume, song, and dance. This festivity is further legitimated as a performance by virtue of it being performed before an audience of spectators, witnesses, and participants.

During the ceremony, the homes of the parents as well as those of key social actors such as the uncle are transformed into a physical space of initiation; a codified performance space that evokes transition into a different social identification. The songs are generally sung by young people, men and women, who attend the wedding ceremony, and are generally accompanied by horn-blows, ululations, and choreographic designs. The singers move around the yard in a dance circle, gesturing and stomping their feet. The rest of the audience watches as the dialogue between the singers, the bride, and the spectators continues. Most songs are sung directly to the bride, while others are meant for everyone attending the ceremony. There are songs inviting on-lookers to “admire the bride who looks like a star”, and songs challenging the bride “not to weep because she has accepted his love”, and those that advise her to “be resilient because we have collected the bride wealth.” Further examples of these “advice” songs are as follows:

Song one: Sweep, Sweep, Girl!

Feela, feela, feela ngwanyana!
Feela ngwanyana,
O se jele matlakaleng!

Sweep, sweep, sweep, girl!
Sweep girl;
Don't eat in a messy home!

Matsale ke chobolo,
Chobolo ya mosadi
Feela ngwanyana
O se jele matlakaleng!

Your mother-in-law is a shrew!
The epitome of a shrew!
Sweep girl;
Don't eat in a messy home!

Song Two: Make Way for Her

Heela matsale,
Tlogela dipitsa tseo
Mongatsona ke yo o etla!
Mosuteleng, mosuteleng,
Ke yo o etla!

Hey mother-in-law
Leave your cooking pots
The real owner has just arrived!
Make way; make way,
Here she comes!

Constructions of Traditional Womanhood in Botswana

Song Three: Rebellious Cattle

<i>Dikgomo tsa bogadi,</i>	Some bride wealth cattle
<i>Dingwe di mabelete,</i>	Are whores;
<i>Di tlola ka terata,</i>	They escape through the fence
<i>Sebonta o ile Gauteng!</i>	Like Sebonta who ran away to Gauteng!

The songs cited above are directed at the newly-wedded bride, and function as embodied acts of transfer (Taylor 2003) of indigenous knowledge about gender norms, appropriate feminine behavior and acceptable wifehood. The songs are about labor and hardships; not pleasure. In song 1 above, for example, the bride is advised to “keep her home clean”; an expression that imbricates the expectations to behave modestly, to be submissive and honor her husband and in-laws, and to bear children. The song throws in a cautionary note of marriage hardships, but suppresses this codified message through reiterating the girl’s role to “keep everything clean” in the public eye. The message to stay resolute and not to “shame us” through a divorce is reiterated. Song 2 performs the sequestering of ideal womanhood to the private sphere of the home, echoing the idea of domesticity. In song 3, the persona appeals to the bride to stay faithful to her husband and to shun immorality. This song is significant in its comparison of the hypersexualized cow to a promiscuous woman. It is worth noting that traditionally, chastity was naturalized for women and that marital infidelity was not overtly censurable for men. As part of a wedding ritual called *go laiwa*, a scene during which the bride receives advice from other married women, she is advised not to challenge male promiscuity. This is implicated in proverbs such as *Monna ga botswe ‘o tswa kae?’* [Never ask a man where he’s been]; *Monna phafana o a fapaanelwa*, [A man is a beer vessel, he is meant to be shared]. Thus, the man’s acts of sexual immorality are normalized as inevitable, and the woman’s cooperation as requisite for a successful marriage. Through these imaginings, pleasure for the bride is deferred, and the absence of the husband is normalized. As feminist scholar Sibonile Ellece (2010: 70) observes, gendered language and values (such as the dissipation of pleasure and romance in marriage) are nurtured and perpetuated within the institution of marriage.

Even more pointedly, the songs are not about the bride and the groom, but specifically about two women, the bride and the mother-in-law. Most emphasize the separation rather than the connection between the two women. The mother-in-law is constructed as a bully who expects the bride to become a surrogate servant. To borrow from black feminist and performance critic Marjorie Pryse (1985) and her articulation of the notion of Conjuring, the mother-in-law’s “ancient power” to share the “magic” of storytelling and to strengthen “the network of female connectedness” is replaced by the narrative of severance. Any possible imagination of her as the bride’s mentor and female friend is erased through the logic of separation. The possibility to conjure up the connections between the two women is inhibited and constricted. Here, conjuring is echoed not to “reassert the self” but to isolate.

Connie Rapoo

The “ancient magic” and power of agency that defines conjuring is constructed as a threat to patriarchal power. Arguably, as part of Botswana popular culture and embodied knowledge, wedding songs and marriage rituals translate attitudes of homophobia.

Songs of Subversion and Female Self-assertion

A few indigenous songs exist in Botswana popular performance to demonstrate acts of female assertiveness and creative agency. Most of these are sung and performed by women to mixed audiences. These songs destabilize the monolithic imaging of the demure, docile traditional Botswana woman.

Song 4: Secret Lover

<i>Nna le Rammata</i>	Me and my Lover
<i>Nna le Rammata, mmata!</i>	Me and my sweet Lover!
<i>Re kgonwa ke mogopo,</i>	We feel contented
<i>Re kgonwa ke mogopo o tletse!</i>	We feel contented, only after a bowlful [of sex]!

In Botswana cultural consciousness, sex and public displays of sexual affection are taboo subjects. Particularly, sexual gratification is constructed as a luxury reserved for men. This song is thus particularly instructive in that the female persona publicly declares her active participation and pleasure derived from sexual intercourse. The performing figure in this narrative thus asserts female creative agency.

Another example of female power and social critique is as follows:

Song 5: Tribute to Uncle

<i>Swii, swii swii!</i>	(chorus)
<i>Malala swii!</i>	
<i>Ke tsamaile le malome</i>	I went on a journey with my uncle
<i>Ko pele ra itapolosa</i>	After a while, we stopped to rest
<i>A re, “setlogolo ntsha ditlhogo”</i>	He said, “Niece, pay your tribute”
<i>Ka re, “ditlhogo ke eng malome?”</i>	I said, “What’s tribute, uncle?”
<i>A re, “ditlhogo ke sengwe le sengwe”</i>	He said, “A tribute is anything you have.”
<i>“Serope le sone ditlhogo!”</i>	“A ‘thigh tribute’ is just as good!”
<i>Malala swii!</i>	

This song dramatizes a scene in which an uncle demands sexual favors from his niece. Its pornographic display is evident through the demand for the niece’s “thighs”, a metaphor for female genitalia. As feminist critic Leloba Molema (2003) correctly observes, the niece resists the uncle’s advances. The niece’s response in this performance, however, does not just signal “socially defined censure” against incest, but rather a transformative feminist strategy. The defiant voicing of cultural censure combines with the

Constructions of Traditional Womanhood in Botswana

visualizing of disapproval on the part of the niece to be publicly displayed as a commodity fetish of Tswana ties of kinship.

Marketing Exotic Sexuality

Mowana Lodge in Kasane, northern Botswana, is one of the most popular tourist sites that carry many cultural materials, some of which inspired my research of constructions of femininities in Botswana. One art piece depicted a naked black woman in a squatting posture, holding an earthenware water pitcher [*nkgō*] between her legs. Carved in exquisite marble, the structure was particularly striking in its technologizing and narrativizing of gender and sexual “excessiveness”. With deliberate geometric precision, the artist had designed and carved out the opening of the water vessel in such a way that it connected directly to the vagina. There is a clear connection and uninterrupted continuation between the two orifices; signaling a visualization of the history and construction of gender and sexuality in the Botswana cultural imaginary.

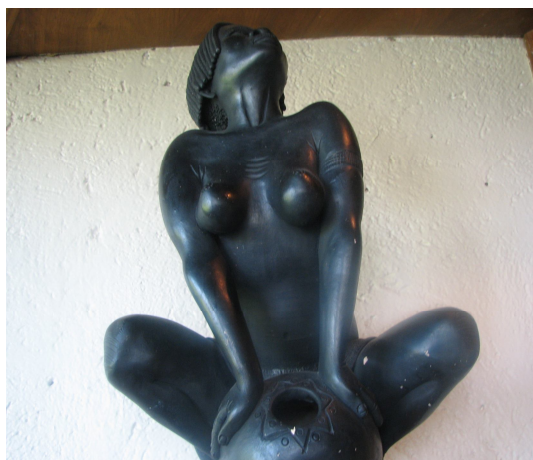


Figure 3: “Lady and water pitcher.” Photograph by Connie Rapoo.

Next to this art piece was a similar one, clearly carved by the same artist, with the woman in the same squatting posture, holding a drum.



Figure 4: “Lady and drum.” Photograph by Connie Rapoo.

The two carvings were elevated on a mantelpiece in a restaurant, and were visible to guests as they dished out their food. Struck by these images, I interviewed a few guests for their reactions to them. Most females, locals and visitors to the country, displayed a discomfort with what they labeled as “pornographic overtones” of the artifacts. Others simply viewed it as an innocent artistic expression.

These artworks are a precise physical depiction of the construction of female identity in traditional Botswana. Utilizing the calabash and the drum as objects of cultural heritage, the carvings described and pictured above resonate with connotations of the hyper-visualized black female body. The artifacts reproduce the vagina as a fetish. The preponderance of the vagina as a distinguishing female sexual organ also functions as a motif for pleasure and danger. In Setswana cultural discourses, the vagina is metaphorically referred to as *kuku* a “cake”, *tlhako* a “cow hoof”, *nkgoo* a “calabash”, *dikobo* or *malala* “blankets”, or *motswedi* a “swamp”. Similar to a delicious cake, the woman gets “consumed”; like a cooling water calabash, she brings replenishment. As one informant offered, like a swamp, the woman’s vagina can overflow or overwhelm with an excess amount of joy or danger. Most significantly, an overflowing swamp can be fatally destructive. Correspondingly, the vagina can be destructive when it is “contaminated” with disease, as in the case of HIV AIDS. Generally, in Botswana popular cultural consciousness, women are depicted as the source of sexually transmitted diseases. An advertisement on Botswana Television, for example, animates the ways in which “beautiful city girls” transmit AIDS to unsuspecting men. The advertisement deploys notions of beauty and charm stereotypically to signify female sexual immorality. The performance of

Constructions of Traditional Womanhood in Botswana

cultural memory in this advertisement is interesting because male promiscuity is not sanctioned in marriage.

The placing of the female figure in the space of the tourist hotel is particularly informative. She bears the mark of the over-exoticized “Africa” of the colonial imaginary. She embodies the indigenous or “primitive” within the modern space of the hotel. As part of Botswana narrative of cultural heritage tourism, the urban space of the hotel negotiates the colonial legacies of “African” exotic landscapes. The female naked body signifies the accessibility and penetrability of that “Africa”, and echoes ideas of exoticized black female sexuality. Conceptualizations of exotic African sexuality date back to the exhibitions of Saartjie Baartman, the so called Hottentot Venus. In Nineteenth Century Europe, Baartman’s exhibitionists emphasized her exotic sexuality in the minds of Europeans. Contemporary artworks such as those depicted above resonate with equivocations of the re-penetrability of the post-colonial space.

Another characteristic display of women’s bodies appears in popular singer and traditional male dancer, George Swabi’s famous song “Baga Mmangwato”. The song stages the drama concerning an old man who laments about his wife whose “blankets” have become dry and stale. In his characteristic vaudevillian, slapstick performance, George Swabi declares in Song 5:

Song 5: Madam-big-butt

Mma-sephankga sutella koo
O adile phate wa ala sekoko!

Madam-big-butt, scoot over
You’ve spread out your dry blanket!

To borrow from Henry Louis Gates (1988), signifyin(g) on the woman’s old and “dry” vagina, Swabi stages the idea that women become non-profitable as they age. In the lyrics above, Swabi also evokes the association of women with animals through the image of the *phate*, a traditional blanket made from a cow hide. Like an uncomfortable cow-hide bedspread, the woman’s genitalia are unpleasant and unappealing to the man. George Swabi’s song thus weaves together an intricate display of female sexual parts. The song is often performed through a pantomime. The Signifyin(g) devices of narrating and performing female sexuality and the humour invoked during the dance mystify the underlying misogyny behind Swabi’s performance. Swabi’s drama also repeats the image of the voluptuous African woman, which resonates with figurations of exoticized sexuality as in the figure of Baartman. Through a pantomime of the voluptuous woman, George Swabi portrays the surrealist construction of gender and sexuality in the Botswana cultural imaginary.

The motif of exoticized sexuality and display also figures through transnational floating objects such as postcards, postage stamps, and t-shirts. As the examples of t-shirts below demonstrate, the trafficking of African female sexuality is appropriated to the market and transposed across national and transnational borders. “Africa makes me so hot!” reads one t-shirt. The

Connie Rapoo

imprint is accompanied by a drawing of a sexualized zebra. This t-shirt recalls constructs of African female sexuality through a humorous and sexualizing play on images of the “wilderness” and atmospheric temperature. Animal depictions evoke stereotypical representations of African female sexual exoticism, lasciviousness, and savagery. These imaginations provide justification for female conquest and domestication by the imperialist male.



Figure 5: T-shirt inscription “Africa Makes me so Hot!” Picture of a t-shirt displayed in a curio shop at Mowana Lodge, Kasane. Picture by Connie Rapoo.

This motif of savage sexuality recurs in two other examples. One t-shirt is inscribed “Girls in Africa are so darned cute!” and features a “sexually attractive” giraffe. The other reads, “African queen” and dramatizes a leopard embellished with a golden tiara.

Constructions of Traditional Womanhood in Botswana



Figure 6: T-shirt inscription, “Girls in Africa are so Darned Cute!” Picture of a t-shirt displayed in a curio shop at Mowana Lodge, Kasane. Picture by Connie Rapoo.



Figure 7: T-shirt inscription, “African Queen.” Picture of a t-shirt displayed in a curio shop at Mowana Lodge, Kasane. Picture by Connie Rapoo.

In depicting Africa and African female sexuality, the animal surrogates the woman as a sign of value and identification. Yet in this surrogation the

female body does not disappear; instead it is performatively suspended through notions of cultural heritage tourism. This substitution confirms the female body's capacity to be re-appropriated for profit as a cultural and tourist object. As much as African "wilderness" is for sale through tourist enterprises, African female sexuality is perpetually exhibited on the transnational "auction block" as either a popular form of amusement or an object of property.

Conclusion

The myths, songs, proverbs, and other forms of cultural recall analyzed here reveal the female body as a corporeal site that is inscribed with marks of social and cultural values, norms, and practices (Grosz 1994). These forms of popular performance inform attributes of domesticity, demureness, and sexual purity, and underscore gender as performative. The practices are central to notions of sexual domination and control. They perform the anxiety over transgressive behaviors and subjectivities that offend Tswana patriarchal sensibilities. Most significantly, however, these practices highlight expressive performance traditions as a rich site for subversive behaviors that symbolize possible scenarios of change, adaptability, and knowledge transmission. This essay offers a critique of oral traditions and notions of traditional womanhood while simultaneously theorizing these scenarios as popular performance sites for re-articulating Botswana femininities. Traditional wedding songs, marriage rituals, and indigenous songs of subversion by women performers are potential sites to conjure female networks, creative agency and power. Notably, the existence and successes of the assertive and subversive female figures as politicians, businesswomen, leaders, and experts in various sectors in Botswana remains largely unarticulated in contemporary popular culture and urban cultural processes.

REFERENCES

- Becker, P. (1968). A Comparative Study of the Strategy in Bantu Tribal Warfare during the 19th Century. *The South African Military History Journal*, 1, viewed 02 February 2011, <http://samilitaryhistory.org/vol013pb.html>.
- Boris, E. (2007). Gender After Africa! In *Africa After Gender?* Ed. Cole, C.M., Manuh, T. and Miescher, S.F. Bloomington: Indiana University Press, pp. 191-204.
- Case, S. (1985). Classic Drag: The Greek Creation of Female Parts. *Theatre Journal* 37: 317-327.
- Collins, P.H. (2000). *Black Feminist Thought: Knowledge, Consciousness, and the Politics of Empowerment*, New York: Routledge.

Constructions of Traditional Womanhood in Botswana

- Christian, B. (1997). *Black Feminist Criticism, Perspectives on Black Women Writers*, New York: Teachers College Press.
- Eldredge, E.A. (1993). *A South African Kingdom: The Pursuit of Security in Nineteenth-Century Lesotho*, New York: Cambridge University Press.
- Ellece, S.E. (2010). Asking For a “Water Calabash”: Metaphor and Gender in “Patlo” Marriage Ceremonies in Botswana” in Marang: *Journal of Language and Literature* 20: 63-77.
- Grosz, E. (1994). *Volatile Bodies: Toward a Corporeal Feminism*, Bloomington: Indiana University Press.
- Gates Jr., H.L. (1988). *The Signifying Monkey: A Theory of African-American Literary Criticism*, New York: Oxford University Press.
- Hawthorne, P. (1997). South Africa: Muggers of the Nation?” In *Time Magazine*, 08 December, 1997, viewed August 2009, [www.time.com/time/magazine/article/0.9171,987496.00.html](http://www.time.com/time/magazine/article/0,9171,987496,00.html).
- Lorde, A. (1993). Uses of the Erotic: The Erotic as Power”. In *Wild Women Don’t Wear No Blues*. Ed. Golden, M. New York: Doubleday, pp. 1-2.
- Matumo, Z.I. (1993). *Setswana-English-Setswana Dictionary*. Gaborone: Macmillan Botswana Publishing Company and Botswana Book Centre.
- Moabi, D. (2007). That Cartoon Gives the Press a Bad Name” in *MmegiOnline*, 12 July 2010, viewed 15 August 2010, <http://new.mmegi.bw/index.php?sid=2&aid=21&dir=2007/July/Thursday12>.
- Molema, L. (2003). Setswana Wedding Songs. In *Women Writing Africa: The Southern Region*. Ed. Daymond, M.J., Driver, D., Mentjes, S., Molema, L., Musengezi, C., Orford, M. and Rasebotsa, N. New York: The Feminist Press, pp. 513-514.
- Nnaemeka, O. (1997). *The Politics of (M)Othering: Womanhood, Identity, and Resistance in African Literature*, London: Routledge.
- Pryse, M. and H.J. Spillers (1985). *Conjuring: Black Women, Fiction, and the Literary Tradition*, Bloomington: Indiana University Press.
- Salami, I. I. (2003). *More Than Dancing*, Jos: Saniez Publications.
- Schapera, I. (1940). Kinship and Marriage among the Batswana.” In *African Systems of Kinship and Marriage*. Ed. Radcliffe-Brown, A.R. and Forde, D. London: Oxford University Press for the International African Institute, pp.140-165.
- Taylor, D. (2003) *The Archive and the Repertoire: Performing Cultural Memory in the Americas*. Durham: Duke University Press.