



Physicochemical characterization of starches from seven improved cassava varieties: Potentiality of industrial utilization.

DOUE G. Gladys^{1*}, MEGNANOU Rose-Monde¹, BEDIKOU E. Micaël¹, NIAMKE L. Sebastien¹.

¹Laboratoire de Biotechnologies, UFR Biosciences, Université Félix HOUPOUET-BOIGNY, 22 BP 582 Abidjan 22, Côte d'Ivoire.

(*) Corresponding author: Ginette Gladys DOUE, doueginette@yahoo.fr/ Cell: 00225 07 58 27 29

Original submitted in on 8th August 2013 Published online at www.m.elewa.org on 31st January 2014.

ABSTRACT

Objective: The present study, which is in line with tropical crops increased value, aimed to highlight the industrial potential of starches from seven newly improved cassava varieties through their morphological, physicochemical and functional properties.

Methodology and results: Starches from seven improved cassava varieties encoded respectively V₅₄, V₅₅, V₆₄, V₆₆, V₆₉, and V₇₃ and V₄ were extracted and their physicochemical and functional characteristics were determined. The whole starches granules were ovoid and conical bearing a hilum on the truncated side. They contained relatively high amount of small granules (<10 µm size) and amylopectin. In addition, all the starches showed very strong water absorption capacity and began gelatinizing early (55 – 60 °C). However, the physicochemical characteristics significantly varied from one starch variety to another. The starches of V₅₄, V₆₄ and V₇₃ varieties showed an exceptional low (0.01 %)?? and stable syneresis after four weeks at 4 °C and -15 °C for V₅₄. The highest clarity was topped by varieties V₅₄ (78.54±3.30 %) and V₆₄ (76.27±6.72 %). Three starch varieties encoded V₅₄, V₆₄ and V₆₉ registered the higher amount of small granules (15.8±1.50, 16.60±0.90 and 14.40±0.90 % respectively). In contrast those encoded V₅₅, V₆₆ and V₇₃ with large granules, recorded the higher swelling power (30.10±3.00, 28.21±2.32 and 29.74±2.40 g/g respectively) and high amount of amylose (17.37±2.54, 20.86±2.36 and 19.03±2.45 %)

Conclusions and application of findings: The studied cassava starches varieties (particularly V₅₄, V₇₃, V₆₄, V₅₅ and V₆₆) could find a wide range uses in food and non-food industries as pharmaceuticals, cosmetics, textiles thanks to their interesting physicochemical and functional properties.

Key words: Cassava, starch, functional properties, industrial utilization.

INTRODUCTION

Cassava (*Manihot esculenta* Crantz) is the third most important source of energy after rice and maize, for human and livestock in the world (Fauquet & Tohme, 2008; FAO, 2008). It is grown for its edible roots, which serves as a food security and income-generating crop for millions of people

in the developing countries (Sanni & Ayinde, 2002; Amani *et al.*, 2005). In spite of all these potentialities, cassava is faced with a crucial problem of post-harvest storage. An excessive glut and harvest losses (approximately 50 %) occur at the peak of harvesting time (CORAF/WECARD,

2011). Fresh cassava roots are highly perishables, with a shelf life of less than 3 days. Therefore, they are of poor market value. In this context, cassava roots are then processed into more storable forms (Phillips *et al.*, 2004; FAO, 2008) such as starch following the Global Cassava Development Strategy advice in order to fulfil the global demand of cassava starch (FAO/IFAD, 2004). Starch is a multibillion-dollar business worldwide and is finding application in several industries. Indeed, outside the fact of being the main source of energy in the human diet, starch is also used in food industries and non-food industries such as manufacturing of adhesives, cosmetics, detergents, paper and textiles. In some foodstuffs, starch is used to influence or control such characteristics as aesthetics, moisture, consistency and shelf stability (De Cock, 1996; Ellis *et al.*, 1998). This expansion of industrial uses justifies the incessantly increase

in demand for starch (Davis *et al.*, 2002). Potato, maize, wheat and cassava are the major sources of industrial starch but only around 10% of these starches derive from cassava (*Manihot esculenta Crantz*) roots. Although the uniqueness of starch physicochemical and functional characteristics, which is linked to its quality, varies according to its intended application (Svegmark & Hermansson, 1993), the significant differences among starch properties impose the search of new sources of starch with high and consistent qualities. In this respect, many research programs have implemented several strategies to develop high value cassava varieties (Ceballos *et al.*, 2004; Ceballos *et al.*, 2006). Some of these new cassava varieties obtained by bio fortification and introduced in Côte d'Ivoire by IITA (International Institute of Tropical Agriculture) showed a relatively high amount of starch (Koua *et al.*, 2012).

MATERIALS AND METHODS

Raw material: Seven improved varieties of cassava encoded respectively V₅₄, V₅₅, V₆₄, V₆₆, V₆₉, and V₇₃ (yellow colored pulp) and V₄ (white colored pulp). These roots of eleven months old were kindly provided by the National Agricultural Research Center (CNRA) of Adiopodoumé (Côte d'Ivoire).

Starch isolation: Cassava starches were extracted within 24 hours after harvesting according to Banks and Greenwood (1975) method. Samples of two kilograms (2 kg) of each cassava roots were washed, peeled and cut into small slices (4x4 cm) with stainless steel knife. The slices were blended and the paste dispersed in a sodium chloride (4%) solution to separate proteins from the starch during 24 h at 25±1 °C. The slurry was sieved successively through 500 µm, 250 µm and 100 µm sieves. The starch obtained in a separating funnel was then dried at 45 °C for 48 hrs in an electric oven (Memmert 700, Germany) with fan-forced ventilation. The dry products were ground, quantified and then stored for analyses.

Starch granule morphology: The starch granules morphology was determined by electron microscope. Isolated starch granules were mounted on the surface of a brass disk using double-sided adhesive silver-tape, coated with gold/palladium (60/40) and viewed under a scanning electron microscope (FEG Supra 40 VP Zeiss 2008) with an acceleration of 1 kV. The diameter

distribution was determined on 500 granules using a calibrated micrometer.

Physicochemical characteristics: The moisture and pH were carried out following the AOAC (1990) and Benesi *et al.* (2004) methods respectively. Amylose and amylopectin contents were carried out following the method described by Jarvis & Walker (1993): Defatted starch (0.1g) was dissolved in 5 ml of potassium hydroxide (1N) solution. The suspension was thoroughly mixed and 5 ml of HCl (1N) solution were added. The mixture was boiled in water bath for 15 min and the volume was adjusted to 10 ml. After centrifugation at 1000 rpm for 10 min, the supernatant was used for determination of amylose and amylopectin. For this, 0.05 ml of the supernatant was introduced in a test tube and 4.85 ml of distilled water, following by 0.1 ml of iodine reagent were added. The mixture obtained was left to stand for 10 min and the absorbance was read at 580 nm and 720 nm, respectively by using a spectrophotometer (Helios, Omega, UK). Standard curves of amylose and amylopectin were used as references.

Functional properties:

Swelling power and solubility of the starch were determined by the method described by Ly & Yeh (2001) and Sosulski (1962) used to evaluate the samples water absorption capacity. Stability of starches samples to freezing was determined according to

Schoch (1968). Ten (10) g of paste sample were conditioned in a plastic tube at -15 °C and 4 °C, respectively for 4 weeks. Freezing stabilities were performed every week by measuring the percentage of water expelled after centrifugation at 2700 rpm for 30 min. The paste clarity of starch samples was carried out as described by Graig *et al.* (1989). Aqueous dispersions (1%) of starch were boiled at 100°C and constantly shaken for 30 min. The paste was cooled at ambient temperature and stored at 4 °C for 4 weeks.

RESULTS

Morphological and physicochemical characteristics: the cassava starches granules (small and large sizes) were ovoid and conical with a truncated side bearing an eccentric hilum. The surface of the whole granules was smooth except for some granules of the variety V₆₄, which was, crumpled (Figure 1). Concerning the granule size distribution reported on Table 1, variety V₆₉ recorded the widest range (0.88 to 31.40 μm) when V₅₄ got the narrowest (6.5 to 25.37 μm). Moreover, variety V₄ topped the highest amount of small granules (31±2.00 %) in

The transmittance was measured at 650 nm every week by using a spectrophotometer (Helios, Omega, UK).

Statistical analysis: All the experiences were performed in triplicate and the data were analyzed using the XLSTAT version 2007 Software and EXCELL. More precisely, in order to underline the differences between characteristics values means, Duncan's test of the ANOVA was used at 95 % of confidence.

opposition to V₇₃ (03.40±0.65 %). The others varieties got intermediate values (7.40±0.6 % for V₆₆ to 15.8±1.5 % for V₅₄). About the amylose and amylopectin content (Table 2); the test of Duncan revealed a significant difference between varieties compared with moisture and pH that presented no difference. Indeed, amylose contents were inversely correlated ($r = -0.88$) with amylopectin, and both ranged from 14.20±1.98 % (V₅₄) to 25.31±2.5 % (V₄), and from 85.86±2.23 % (V₅₄) to 74.69±3.56 % (V₄), respectively.

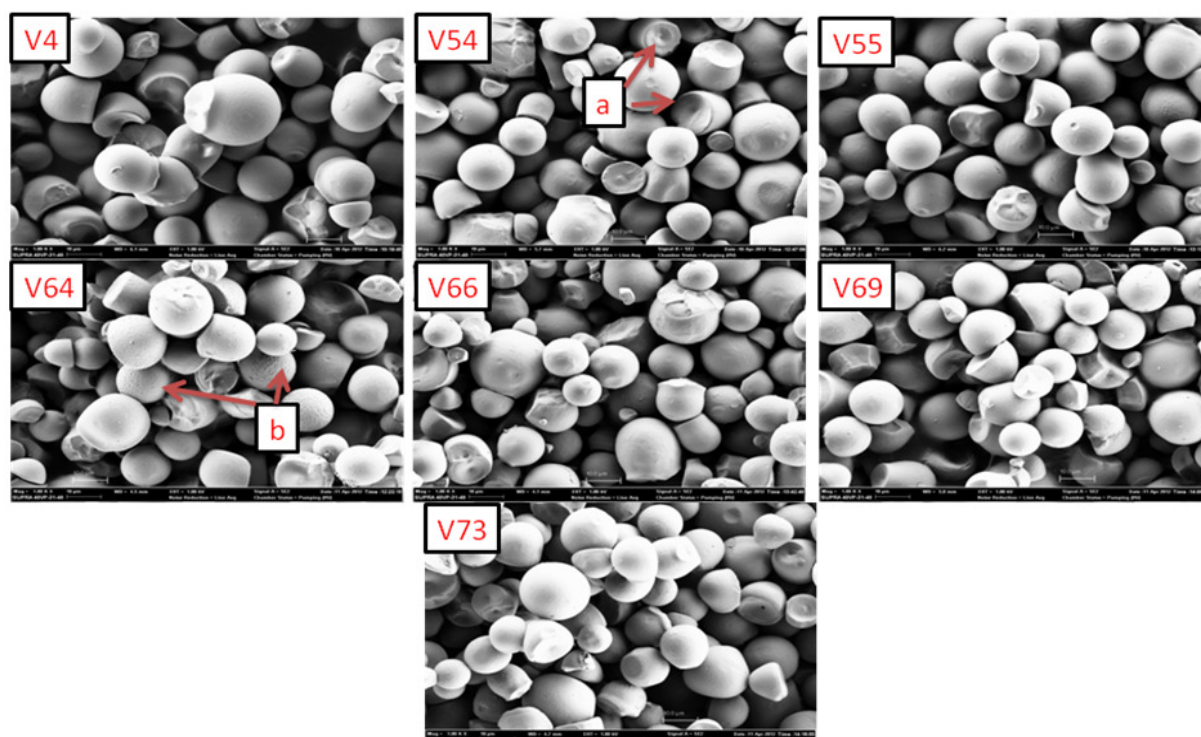


Figure 1: Scanning electron micrographs of starches (Gx 400) of cassava varieties.
Legend: a –hilum in the truncated side; b – granules with rough surface

Table 1: Starch granules distribution and proportion of small granules of cassava starches.

Varieties	Granules size distribution (μm)	Proportion of small granules (%)
V ₄	3.51 – 24.35	31.00±2.00a
V ₅₄	5.45 – 30.59	15.80±1.50bc
V ₅₅	4.95 – 24.67	07.80±1.05d
V ₆₄	6.50 – 25.37	16.60±0.90b
V ₆₆	1.58 – 31.71	07.40±0.60d
V ₆₉	<u>0.88</u> – 31.40	14.40±0.90bc
V ₇₃	4.99 – 23.77	<u>03.40±0.65e</u>

Data are represented as means±SEM (n=3). Mean with different letters in the same row are statistically different (p < 0.05) according to Duncan's test. Legend: In bold, highest values; underlined, the weakest.

Table 2: Physicochemical characteristics of cassava starches

Varieties	Moisture (%)	pH	Amylose (%)	Amylopectin (%)
V ₄	12.95±0.30a	5.69± 0.21a	25.31±2.50a	<u>74.69±3.56^e</u>
V ₅₄	13.55 ±0.26a	4.83± 0.10a	<u>14.20±1.98f</u>	85.80±2.23a
V ₅₅	13.30±0.53a	5.64 ±0.04a	17.37±2.54d	82.63±2.44bc
V ₆₄	13.20±0.62a	5.80±0.10a	16.90±2.30d	83.10±1.76b
V ₆₆	13.75±0.33a	5.57±0.11a	20.86±2.36b	79.14±2.09d
V ₆₉	13.50±0.33a	5.66±0.13a	16.62±2.09e	82.38±2.45bc
V ₇₃	12.80±0.31a	5.43±0.31a	19.03±2.45c	80.97±2.78c

Data are represented as means±SEM (n=3). Mean with different letters in the same row are statistically different (p < 0.05) according to Duncan's test. Legend: In bold, highest values; underlined, the weakest. Amylose and Amylopectin content are based on dry mater.

Functional properties : Concerning the swelling power (SP) as function of temperature, all the starches showed the same profile of Gaussian curve, with a peak at 80 °C for variety V₆₆ and at 85 °C for all the other varieties (Figure 2A). However, the Duncan's test revealed significant (F=76659.714; p=0.0001)

differences concerning the maximum of SP of the seven varieties of cassava starches (Figure 2B). In fact, variety V₅₅ recorded the most important SP (30.19±3.00) in opposition to V₄ (24.53±2.50 g/g). The others varieties registered intermediary values ranging from 25.98±2.63 g/g (V₅₄) to 28.26±2.30 g/g (V₆₄).

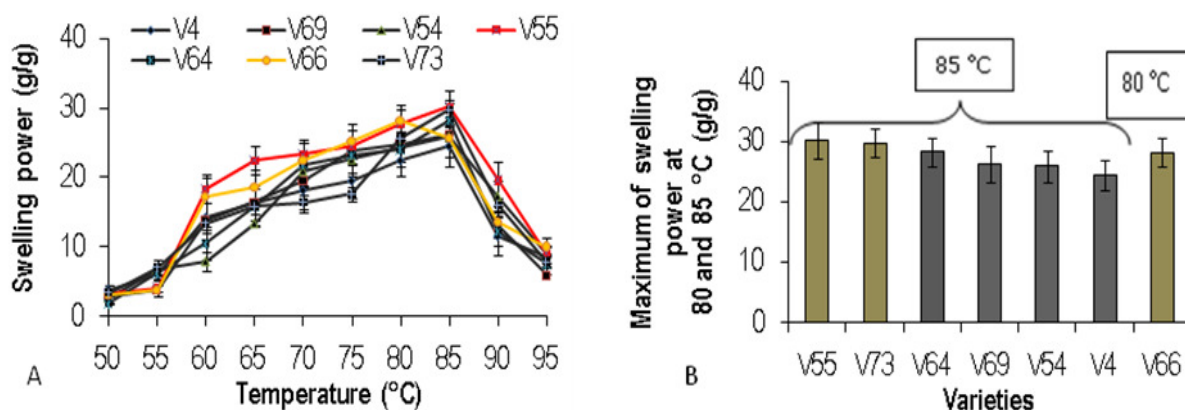


Figure 2: Cassava starch swelling power evolution as function to the temperature and to the varieties. Legend: **A** – Swelling power evolution, **B** – Maximum of swelling power

The solubility profile (continuous increasing) was the same for all the varieties (Figure 3A). Starch solubility went increasing from 50 to 95 °C with two phases. From 50 to 70 °C, starches solubility rose more slowly than it did from 70 to 95 °C, for all the varieties.

However, the maximum of solubility (at 95 °C) significantly ($F=1473.085$; $p=0.0001$) varied from a starch to another (Figure 3B). Hence, variety V_{55} topped the highest value (8.44 ± 0.65 %) while V_{73} had the lowest (6.04 ± 0.83 %) at the same temperature (95°C).

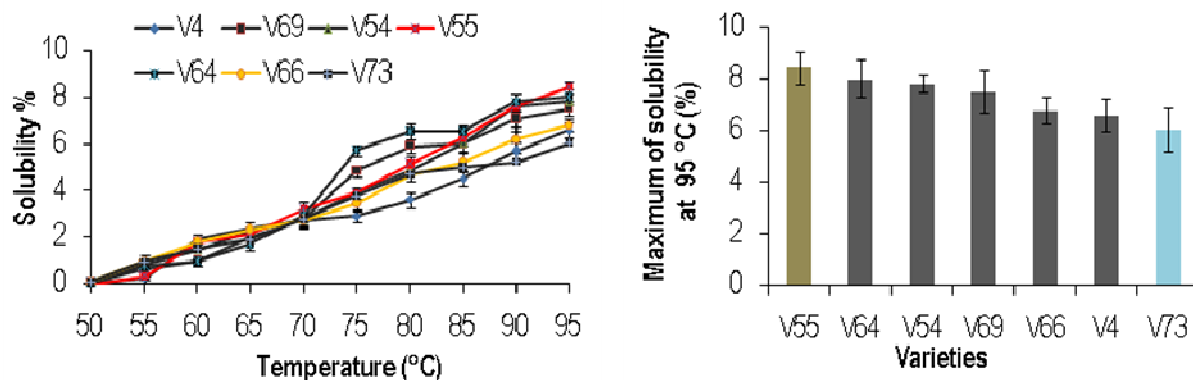


Figure 3: Cassava starch solubility evolution as function to the temperature .Legend: **A** – Solubility evolution, **B**- Maximum of solubility

The water absorption capacity (WAC) also showed a significant ($F=4.281$; $p=0.012$) difference among starches varieties (Figure 4). Indeed, the highest value was registered by V_{55} (119.94 ± 0.57 %) and the

slightest by V_4 (107.08 ± 0.50 %) followed by V_{54} (118.24 ± 0.46 %). The others varieties obtained intermediary values ranging from 108.04 ± 1.40 % (V_{66}) to 118.24 ± 0.46 % (V_{54}).

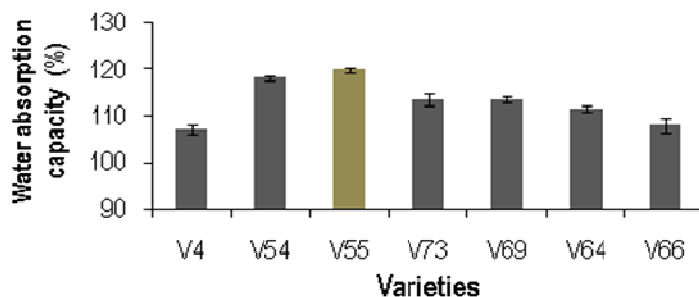


Figure 4: Cassava starches water absorption capacity the varieties

About gel syneresis at -15 and +4 °C, the starches registered 0.00 % the first day (J_0), then the syneresis increases continuously from the first week to the fourth one (Figure 5A and 5B). Nevertheless, varieties V_{54} , V_{64} and V_{73} kept their very low syneresis (0.01 %) constant during the same period at +4 °C. V_{54} showed the same

behaviour at -15 °C. Concerning variety V_{55} , comparatively to varieties V_4 , V_{66} and V_{69} which syneresis values increased more rapidly from J_0 to the fourth week, its syneresis rose very slightly (0.00 to 2.10 %) at +4 °C during the same period and from J_0 to the first week (0.00 to 1.39 ± 0.05 %) at -15 °C.

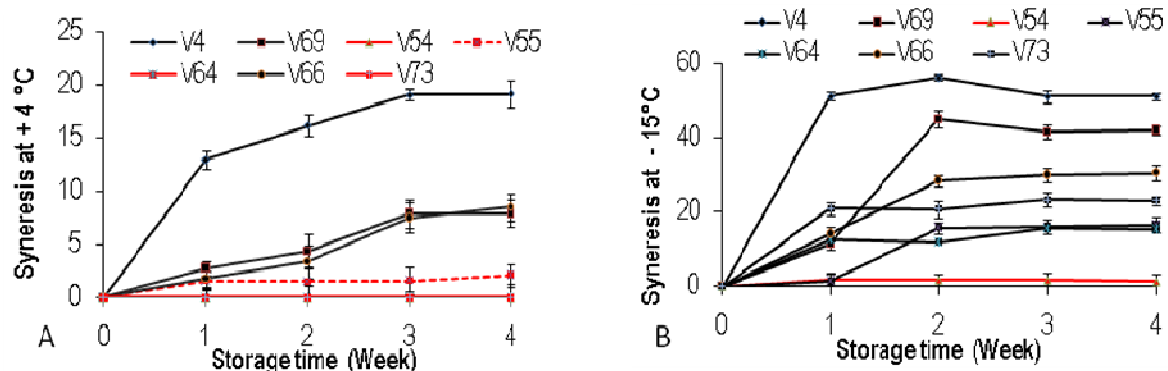


Figure 5: Evolution of the cassava starches gel syneresis during storage (A): +4°C, (B): -15°C

As far as gels clarity, all the varieties recorded their highest values at J_0 , and then decreased continuously until the fourth week (Figure 6A). It is worth underlining the varieties V_{54} and V_{64} , which presented the most important value of clarity at J_0 and kept this same importance from the first to the fourth week. Moreover, the Duncan's test showed a significant ($F=789.258$; $p=0.0001$) difference between varieties clarity at J_0 (Figure 6B). In fact, variety V_{54} topped $78.54 \pm 3.30\%$ when V_{55} registered $38.51 \pm 3.05\%$. The other values ranged from $41.73 \pm 4.70\%$ (V_{69}) to $76.27 \pm 6.72\%$ (V_{64}).

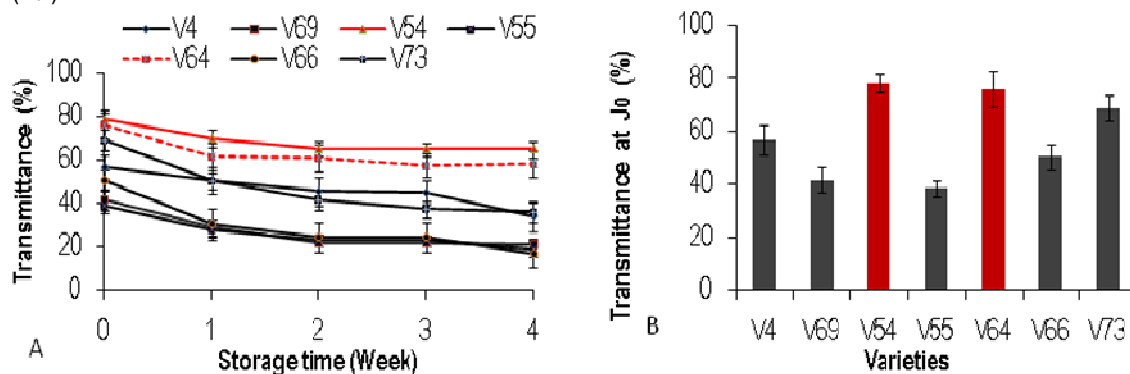


Figure 6: Evolution of gels clarity during storage at +4°C (A) and Gel clarity of the cassava starch varieties at J_0 (B)

DISCUSSION

Nowadays the food and non-food industry is faced with the challenge of providing quality foods and non-food products. For a product like starch, which is used as a basic material in many industries, quality can only be defined with reference to the end use. This exigency is generally referred to its functional and physicochemical properties (Aviara *et al.*, 2010; Garsetti *et al.*, 2005). Hence, higher starch swelling power is better for its involvement in food as thickeners and binding agent and in non-food industries as adhesive and pastes glues (Sanni *et al.*, 2005). Indeed the loss of free water due to enormously swollen granules occupying more space contributes to improve the texture and the consistency of the starch heating system (Berry, 1997; Aviara *et al.*, 2010). Cassava starch varieties V_{55} , V_{66}

and V_{73} had strong swelling power at relatively low temperatures (80 °C and 85 °C) comparatively to corn starch usually employed as a raw material for manufacturing glues or pastes adhesives at higher temperature (more than 100 °C), could then be recommended for that purpose (Sanni *et al.*, 2005). It is important to note that these starch varieties contained not only the highest amount of large granules but also the most important amylose content. These physicochemical properties would justify their behaviour in water, comparatively to the other varieties (Massaux *et al.*, 2006; Nuwamanya *et al.*, 2011). Furthermore, these cassava varieties could be suitable for preparations, which require precise temperatures of cooking. For instance, the variety V_{66} could be

recommended as a composite additive to potato flour or starch as well as texturing and binding agent in the preparation of sausages with giblets whose precooking is made at 80 °C (Hendrick *et al.*, 1994). The high swelling power of varieties starches V₅₅, V₆₆ and V₇₃ could be explained, according to Singh *et al.* (2003) and Wickramashinge *et al.* (2009) by the amount of large (> 10 µm) granules (for the whole varieties) and amylose. Indeed, water swelling (in heating condition) would be as higher as amylose content would be higher. This situation is confirmed by the results of the present study though the previous varieties registered the highest values of water swelling and amylose. Moreover, the two phases of solubility of starch varieties would suggest and underline the relative strongest of granules intra molecular structure due to the high stability of starch amylopectin structure (Graffham *et al.*, 2000) mostly in the starch varieties V₆₄, V₅₄ and V₆₉. It is not worth précising here that these varieties contained more amylopectin and small granules than the other did, what would suppose an important crystalline structure, and would confirm that small granules are more robust than large ones (Massaux *et al.*, 2006). About starch granules size, it should be essential for the cosmetic and pharmaceutical industries since the starch with higher small granule amount, could be used as a dusting agent in cosmetic and pharmaceutical industries (Massaux *et al.* 2006). According to the same authors, large granules would be better in plywood industry for plastic film manufacturing, so that the films would be biodegradable. Hence, based on their granules sizes, starch varieties of V₄, V₅₄ and V₆₄ could be used in the cosmetic and pharmaceutical industries as dusting agent, while V₅₅, V₆₆ and V₇₃ could be involved in plastic films. It would be worth recalling that all the cassava starch varieties also present interesting (more than 100%) swelling capacity at ??? ambient temperature. In fact, the increase in swelling capacity is indicative of suitability of a starch being used as a disintegrant agent in pharmaceutical industry (Chowdary, 2011). This property is generally exploited in potatoes (72.2 to 89.6 %) and corn (82.1 % to 97.7 %) starches (Kim *et al.*, 1995; Zuluaga *et al.*, 2007). Hence, it would be better to exploit the whole cassava starch in the tropical pharmaceutical industries, to reduce importations costs of potato and corn starch. Starch gel Syneresis is a parameter that represents the volume of water separated from the formed gel under storage at room

temperature, refrigeration and freezing. This parameter characterizes the starch stability to these temperatures (Salwa *et al.*, 2010). The lowest syneresis (highest resistance to freeze-thawing cycle) is obtained by gels of varieties V₅₄, V₅₅, V₆₄ and V₇₃ with negligible water exuded under refrigeration and freezing. This shows a very stable behaviour of these gels under storage quite similar to those obtained with waxy starches (maize, rice and cassava) which improved freeze-thaw stability compared to normal starches (Sanchez *et al.*, 2010). So, these cassava starches varieties with such performance could be proposed as a substituent to waxy starches or other modified starches, which generally result from genetics manipulations and are expensive. However, it is important to notice that, contrary to the results of Schmitz *et al.* (2006) and Davies *et al.* (2008), no significant relation appeared between amylose content and syneresis, since varieties V₅₄ and V₆₄ got at far less amylose than varieties V₅₅ and V₇₃ but all of them adopted the same syneresis profile. This may be due to the higher weight-average molecular weight of the amylose fraction in cassava starches (Susuki *et al.*, 1985) delaying the retrogradation. The latest phenomena would also be evaluated by gel clarity which would denote the starch purity (Masamba *et al.*, 2001; Nuwamanya *et al.*, 2011), allowing its utilization in food and non-food products without interfering with their color and shelf life. The high clarity of the whole starch and the relative stability (for four weeks) of varieties V₅₄ and V₆₄ gels at +4 °C would confirm the aptitude of cassava starch to being utilized for its bright clarity (Masamba *et al.*, 2001). This aptitude of clarity stability (V₅₄ and V₆₄) could be due to their lowest amylose contents. Hence, if all the starch varieties could be exploited in the textile industry, varieties V₅₄ and V₆₄, might be used in food industry in creams, syrup and other preparations where high clarity is required (Sanni *et al.*, 2005; Jyothi *et al.*, 2007). In addition to their functional properties, other properties such as moisture, pH and amylose content are also important as they dispose starch to typical utilization under specific exigencies. Hence, the moisture content of the seven cassava starch varieties, which was within recommended range (10 to 20 %) for starches (Soni *et al.*, 1993), might allow them for commercialization. Moreover, the pH values obtained by these cassava varieties might permit their use in the pharmacy, cosmetic and food industry (Nnemeka *et al.*, 2009) where required pH is 3 to 9.

CONCLUSION

The whole cassava starch varieties would be apt to being exploited in pharmaceutical industry as disintegrant for tablets because of their strong water absorption capacity which was at far superior to those of potato and corn starch.. However and preferentially, varieties V₄, V₅₄ and V₆₄ might be chosen for their highest amount of small granules which would permit their employment as dusting agent not only for pills but also for some cosmetics. Varieties V₅₅, V₆₆ and V₇₃ could interest the chemical industrial for glue and detergent manufacturing due to their high swelling power/solubility induced by their high amount of both

amylose and large granule. Considering the high proportion of large granules, they could also be exploited in plywood industry for biodegradable plastic films confection. Varieties V₅₄, V₅₅, V₆₄, V₆₆, and at least V₇₃ could be involved in preparation which might be stored at fridge temperature 4 °C for the whole starches and in freeze (-15 °C) for V₅₄, due to their low and relatively stable syneresis and their high clarity. These varieties could then occur as raw material in the food industry as, thickeners texturing and binding agents, they could be exploited in textile industry due to the high clarity.

REFERENCES

- Amani NG, Kamenan A, Rolland-Sabaté A, Colonna P, 2005. Stability of yam starch gels during processing. *African Journal of Biotechnology* 4: 94-101.
- AOAC, 1990. Official Methods of Analysis. Association of Official Analytical Chemists, Washington D.C., pp. 152-154, 252.
- Aviara NA, Igbeka JC, Nwokocho LM, 2010. Effect of dry drying temperature on physicochemical properties of cassava starch. *International-agrophysics* 24: 219-225.
- Banks W and Greenwood CT, 1975. Starch and its components. Edinburgh university press, 270-273.
- Benesi IRM, Labuschagne MT, Dixon AGO, Mahungu NM, 2004. Stability of native starch quality parameters, starch extraction and root dry matter of cassava genotypes in different environments. *Journal of Science of Food and Agriculture* 84: 1381-1388.
- Berry BW, 1997. Sodium Alginate plus modified tapioca starch improves properties of low fat beet patties. *Journal of Food Science* 62: 1245-1249.
- Ceballos H, Fregene M, Lentini Z, Sanchez T, Puentes YI, Perez JC, Rosero A, Tofino AP, 2006. Development and Identification of High-Value Cassava Clones. *Acta Horticulturae* 703: 63-70.
- Ceballos H, Iglesias CA, Perez JC, Dixon AGO, 2004. Cassava breeding: opportunities and challenges. *Plant Molecular Biology* 56: 503-515.
- Chowdary KPR, and Enturi V, 2011. Preparation, Characterization and evaluation of starch citrate. A new modified starch as a disintegrant in tablet formulations: *International Journal of Pharmaceutical Research and development* 12: 9-17.
- CORAF/WECARD, 2011. Processing of Cassava Into Gari and High Quality Cassava Flour in West Africa. Editors: Asiedu E, Kone A, Konan KI, Ramchander S. Bluepencil Limited India, 36 p. usaid.coraf.org/documents/cassava.pdf
- Davies EM, Maryke TL, Elizma K, Ibrahim RMB, John DKS, 2008. Some properties of starches from cocoyam (*Colocasia esculenta*) and cassava (*Manihot esculenta* Crantz.) grown in Malawi. *African Journal of food Science* 2: 102-111.
- Davis JP, Supatcharee N, Khandelwal RL, Chibbar RN, 2003. Synthesis of Novel Starches in *Planta*: Opportunities and Challenges. *Starch* 55: 107-120.
- De Cock P, 1996. Functional properties of starch/ Methods and applications. *Agro Food Industry Hi-Tech* 7: 18-22.
- Ellis RP, Cochrane MP, Dale MFB, Duffus CM, Lynn A, Morrison IM, Prentice RDM, Swanston JS, Tiller SA, 1998. Starch production and industrial use. *Journal of the Science of Food and Agriculture* 77: 289-311.
- FAO, 2008. Le manioc pour la sécurité alimentaire et énergétique, investir dans la recherche pour en accroître les rendements et les utilisations. FAO salle de presse, Juillet 2008, Rome (Italie), <http://www.fao.org/newsroom/FR/news/2008/1000899/index.html>.
- FAO/IFAD, 2004. The Global Cassava Development Strategy: Cassava for livestock feed in sub-Saharan Africa. Olumide O. Tewe and NeBambi Lutaladio, 76 p Rome.

- Fauquet CM and Tohme J, 2008. Global cassava partnership for 21st century for genetic improvement. In Annual meetings abstracts. Danforth Plant Center, ILTAB, St Louis (USA) 14 p.
- Garsetti M, Vinoy S, Lang V, Holt S, Loyer S, Brand-Miller JC, 2005. The Glycemic and Insulinemic Index of Plain Sweet Biscuits: Relationships to *in Vitro* Starch Digestibility. *Journal of the American College of Nutrition* 24: 441–447.
- Graffham A, Klein U, Jagwe J, Nabawanuka J, Wanda K, Kalunda P Ntibarikure G, 2000. Industrial markets for starch-based products: An assessment of the industrial potential for cassava in Uganda 47 p. www.foodnet.cgiar.org/market/.../CassavaRpt Uganda.
- Graig SAS, Maningat CC, Seib PA, Hosney RC, 1989. Starch Clarity. *Cereal Chemistry* 66: 173-182.
- Hendrick HB, Aberle ED, Judge MD Forrest JC, 1994. Principles of Meat Science. Freeman WH and Co, San Francisco, 198 p.
- Jarvis CE and Walker JRL, 1993. Simultaneous, Rapid, Spectrophonic Determination of Total Starch, Amylose and Amylopectin. *Journal of the Science of Food and Agriculture* 63: 53-57.
- Jyothi A, Kiran K, Wilson B, Moorthy S, Nambisan B, 2007. Wet Storage of Cassava Starch: Use of Sodium Metabisulphite and Acetic Acid and Effect on Starch Properties. *Starch /Starke* 59: 141-148.
- Kim YS, Wiesenborn DP, Orr PH, Grant LA 1995. Differential Scanning calorimetry as a tool for screening potato starch for novel properties. *Journal of Food Science* 60: 1060-1065.
- Koua GYA, Megnanou R-M, Kra KAS, N'Zue B, Tian Bi DR, Akpa EE, Niamké SL, 2012. Biochemical characterization of new varieties of yellow colored pulp cassava flours from Côte d'Ivoire. *Journal of Applied Biosciences* 53: 3760-3772.
- Li JY and Yeh AI, 2001. Relationship between thermal, rheological characteristics and swelling power for various starches. *Journal of Food Engineering* 50: 141-148.
- Masamba W R L, Masumbu F F F, Fabiano E, (2001). Advantages of cassava starch over maize starch in a hot-setting adhesive formulation. *Malawi Journal of Science and technology* 6: 91-97.
- Massaux C, Bodson B, Lenartz J, Sindic M, Sinnaeve G, Dardenne P, Falisse A, et Deroanne C, 2006. L'amidon natif de blé: un composé naturel à valoriser par la connaissance de ses propriétés techno-fonctionnelles? Le Livre Blanc « Céréales » F.U.S.A. et CRA-W Gembloux 6 p.
- Nnemeka EI, Omojola MO, Emeje MO, Kunle OO, 2009. Isolation and evaluation of some physicochemical properties of *Parkia biglobosa* starch. *Pure Applied Chemistry* 81: 97-104.
- Nuwamanya E, Baguna Y, Wembabazy E, Rubaihayo P, 2011. A comparative study of the physicochemical properties of starch from root, tuber and cereal crops. *African Journal of Biotechnology* 10: 12018-12030.
- Phillips T, Taylor DS, Sanni L, Akoroda M, 2004. A Cassava Industrial Revolution in Nigeria. The potential for a new industrial crop. IFAD/FAO, Rome 43 pp.
- Salwa M, Abo-El-Fetoh H, Al-Sayed MA, Nessrien M, Nabih N, (2010). Physicochemical Properties of Starch Extracted from Different Sources and Their Application in Pudding and white sauce. *World Journal of Dairy and Food Sciences* 5: 173-182.
- Sánchez T, Dufour D, Moreno IX, Ceballos H, 2010. Comparison of pasting and gel stabilities of waxy and normal starches from potato, maize, and rice with those of a novel waxy cassava starch under thermal, chemical, and mechanical stress. *Journal of Agricultural and Food Chemistry* 58: 5093–5099.
- Sanni L, Maziya-Dixon B, Patino M, Akoroda M, Ezedinma C, Okechukwu R, Lemchi F, Ogbe F, Mukumbira J, Ilona P, Tarawali G, Okoro E, Dixon A, 2005. Value addition to cassava in Africa: Challenges and opportunities. *African Crop Science Conference Proceedings* 7: 583-590.
- Sanni LO, and Ayinde IA, 2002. Consumer acceptance and economic feasibility of dried fufu production in Nigeria. *ASSET-An International Journal* 3: 107-115
- Schmitz CS, De Simas KN, Jao JJ, De Mello CARD, Amante ER, 2006. Cassava starch functional properties by etherification-hydroxypropylation. *International Journal of Food Science Technology* 41: 681-687.
- Schoch TJ, 1968. Effect of freezing and cold storage on pasted starches. In the freezing preservation of food. D.K. Tressler, Van Arsdell M.J. Copley

- (ed). The AVI publishing co., Westport Connecticut 4: 45-56.
- Singh J, Singh N, Sharma TR, Saxena SK, 2003. Physicochemical, Rheological and cookie making properties of corn and potato flours. *Food Chemistry* 83: 387-393.
- Soni PL, Sharma H, Dun D, Gharia MM, 1993. Physicochemical properties of *Quercus leucotrichophora* (oak) starch. *Starch/Starke* 45: 127-130.
- Sosulski FN, 1962. The centrifuge method for determining starch absorptivity in hard red spring wheat. *Cereal Chemistry* 39: 344-346.
- Susuki A, Takeda Y, Hizukuri S, 1985. Relationship between the molecular structures and retrogradation of tapioca, potato and kuzu starches. *Journal of the Japanese Society Starch of Science* 32: 205-212.
- Svegmark K, and Hermansson AM, 1993. Microstructure and rheological properties of composites of potato starch granules and amylose: a comparison of observed and predicted structures. *Food Structure* 12: 181-193.
- Wickramashinge HAM, Takigawa S, Yamauchi H, Noda T, Matsuura-Endo C, 2009. Comparative analysis of starch properties of different root and tuber crops of Sri Lanka. *Food Chemistry* 112: 98-103.
- Zuluaga M, Baena Y, Mora C, Ponce D'Leon L, 2007. Physicochemical Characterization and Application of yam (*Dioscorea cayenensis-rotundata*) Starch as a Pharmaceutical Excipient. *Starch/Starke* 59: 307-317.