

## PROTEIN EXTRACTABILITY FROM DEFATTED *MORINGA OLEIFERA* LAM. SEEDS FLOUR

Govardhan Singh, R.S;<sup>1</sup> Ogunsina, B.S.<sup>2\*</sup> and Radha, C<sup>1</sup>,

<sup>1</sup>Protein Chemistry and Technology Department,  
Central Food Technological Research Institute,  
(Council of Scientific and Industrial Research), Mysore 570 020, India.

<sup>2</sup>Department of Agricultural Engineering, Obafemi Awolowo University, Ile-Ife, Nigeria.

(Received: December, 2010; Accepted: May, 2011)

### ABSTRACT

Protein extractability from defatted *Moringa oleifera* seed flour was studied under various conditions of pH (2-10), time (5-60 minutes), salts (NaCl and CaCl<sub>2</sub>), salt concentrations (0-2 M) and solvent to flour ratio (10:1-30:1). Results showed that protein extractability was dependent on pH, type of salt, salt concentrations and extraction time. Salts extracted more proteins from the moringa seed flour than water. Maximum extraction of protein was 85.06% and 84.72% with 0.5 M CaCl<sub>2</sub> and 0.75 M NaCl respectively. On varying the pH, maximum extraction of protein from defatted moringa flour was obtained at pH 4 with 0.5 M CaCl<sub>2</sub>. Solvent to flour ratio had no significant effect on the protein extractability.

**Keywords:** Moringa Seed, Protein Extractability, Solubility, Salt Concentration

### INTRODUCTION

Plant proteins play significant roles in human nutrition, particularly in developing countries where average protein intake is less than required (Khalid *et al.*, 2003). Due to inadequate supplies of food proteins, there has been a constant search for unconventional legumes as new protein sources for use as both functional food ingredients and nutritional supplements (Onweluzo *et al.*, 1994). In recent years, there has been serious worry over lack of adequate protein to meet the nutritional requirements of a large segment of world's population. Modern research has thus focused more on oilseed crops as largely unexploited sources of food proteins.

Extractability of proteins of various legumes in aqueous salt solutions has been widely studied and different results were obtained due to the large number of factors involved. Munasinghe and Sakai (2004) demonstrated that NaCl had a significant increase in protein extractability as compared to KCl and LiCl salts. Prakash (1986) studied the effect of NaCl on the extractability of proteins from sesame seeds. The effects of various factors on protein extraction from conophor seeds (Ekpenyong, 1986). Kinsella (1979) listed pH and ionic strength of the medium as having significant influence on the functional properties of proteins. Ragab *et al.* (2004), Lawal (2004),

Inyang and Iduh (1996) and Badifu and Akubor (2000), studied the effect of NaCl and pH on the functional properties of cowpea proteins, locust bean protein isolate, sesame seed concentrate and African breadfruit kernel flour respectively. El Tinay *et al.* (1980) studied the extraction of protein from cottonseed flour at different pH and salt concentration. Molina *et al.* (1974) worked on the extraction of nitrogen constituents of jack bean. Aluko and Yada (1995) determined the physicochemical and functional properties of cowpea globulin isolate as a function of pH and ionic strength. Solubility characteristics, under various conditions, are very useful in selecting optimum conditions for extracting proteins from natural sources (Mahgoub and Elbashir, 2009).

Drumstick (*Moringa oleifera* Lam.) is an important commercial vegetable crop throughout India and some other parts of the world; the immature green pods, apart from being widely eaten as vegetable curry are sliced and canned in brine for export to Europe and America. Hitherto, studies on *Moringa oleifera* seeds was limited to high oleic acid oil and water purification property (Katayon *et al.*, 2006; Foid *et al.*, 2001 and Folkard *et al.*, 1993), whereas it contains up to 332.5 g of crude protein per kg of sample (Jose *et al.*, 1999). Studies to characterize the interaction effects of pH and salts on the extraction of

protein from moringa seed flour will provide useful information for food processors wishing to use it for specific food applications. No report on the effect of several variables like pH, time, solvent to flour ratio and salt concentration on the extractability of defatted moringa seed flour have been documented, hence, this study was carried out to investigate the effects of various factors such as pH, time, solvent to flour ratios, salt type and salt concentrations on protein extractability.

## MATERIALS AND METHODS

### Collection and preparation of defatted Moringa flour

Matured and dry seeds (10 kg) that were botanically identified as *Moringa oleifera* and purchased randomly from a local market in Mysore, India were dehulled and cleaned to obtain the kernels. The kernels were conditioned to an optimized moisture content of 8.5 g /100 g of sample (w.b.) and flaked at a drum clearance of 0.85 mm using a flaking machine (Model J #6725, Kvarnmaskiner Malmo, Sweden). The flakes were dried at 50 - 55 °C for 4 h to a moisture content of 5.5 g /100 g of sample (w.b.) and subsequently defatted by repeated washing with hexane until the fat content was below 1%. The defatted sample was air dried at room temperature (30 °C) for about 24 h and milled in a Quadrumat mill (Brabender, Duisburg, Germany) to pass through a 100 µm mesh stainless steel sieve and designated as defatted moringa seed flour. The flour sample was stored in an airtight container under refrigeration until when needed.

### Proximate analysis

Analysis sample of moringa seed and its defatted flour for fat, and ash contents was carried out. Moisture content of moringa seeds was determined using the American Society of Agricultural and Biological Engineers standard S410.1 (ASABE, 1998). Approximately 10 g of sample was oven dried at 130 °C for six hours after which it is cooled in desiccators and weighed. The percent difference in weight before and after oven-drying was calculated as the moisture content per 100 g of sample. Crude fat was estimated by extracting 20 g of the kernels in petroleum ether (b.p. 40-60 °C) under reflux for 8 h using a soxhlet unit. The extract was calculated per 100 g of sample as crude fat (Ogunsina *et al.*, 2010). Ash content was determined by charring 5 g of sample

and incinerating the residue in a muffle furnace (Lenton Model AF 11/6B, Made in England) at 550 °C for 6 hrs. The weight of the greyish white residue formed was calculated and expressed as total ash per 100 g of sample (AOAC, 2000). Total nitrogen content was estimated using the Kjeldahl procedure and crude protein was obtained by multiplying the nitrogen content by 6.25. Total carbohydrate was calculated as = 100 - (protein + fat + ash). All values were expressed as mean of triplicates.

### Effect of time on protein extraction

The effect of time on the extractability of protein from defatted moringa seed flour was determined by dispersing 1 g of sample in 10 ml of water. The extraction periods that were investigated are 10, 20, 30, 40, 50 and 60 and 120 min. Samples were stirred on a mechanical stirrer for specified periods. The solubilized liquor was separated from insoluble material by centrifugation at 6000 rpm for 30 min at room temperature (25 °C). The aliquots were taken for protein estimation according to AOAC micro-Kjeldahl method (AOAC, 2000).

### Effect of different salt concentrations on protein extraction

Protein extractability was determined by using either NaCl or CaCl<sub>2</sub> with 0.05 to 2.0 M concentrations; solvent to flour ratio, 20:1 and extraction time, 45 min. The homogenate was separated from insoluble residue by centrifugation and the aliquots were taken for protein estimation.

### Effect of different solvent to flour ratios on protein extraction

The effect of solvent to flour ratio on the extraction of protein was studied. The selected salt concentrations were 0.5 M CaCl<sub>2</sub> and 0.75 M NaCl, as they gave highest protein extraction. Samples of different solvent to flour ratios (10:1, 15:1, 20:1, 30:1) with CaCl<sub>2</sub> and NaCl were prepared and stirred on a mechanical stirrer for 45 min. The solubilized liquor was separated from insoluble material by centrifugation and aliquots were taken for protein estimation.

### Effect of pH on protein extraction

The effect of pH on the protein extractability of defatted moringa seed flour was determined by dispersing 1 g flour in 50 ml of

distilled water and 0.5 M  $\text{CaCl}_2$  with pH adjustments over the range of 2-10 by adding either 0.2 N NaOH or 0.2 N HCl. The suspensions were stirred for 45 min and centrifuged at 6000 rpm for 30 min at room temperature ( $25^\circ\text{C}$ ). The protein content of each of the supernatants was determined by Kjeldahl method. The percentage of soluble nitrogen was calculated and plotted

against corresponding pH values.

### Statistical Analyses

All the experiments were conducted in triplicate and means  $\pm$  SD are reported. For proximate analysis, based on the analysis of variance, means were separated by Duncan grouping where significant difference were

**Table 1.** Proximate Composition of *Moringa oleifera* Seed and its Defatted Flour

Composition (g/100g)	Seed	Defatted flour
Protein	36.18 $\pm$ 0.04 <sup>b</sup>	62.76 $\pm$ 0.16 <sup>a</sup>
Ash	3.73 $\pm$ 0.04 <sup>b</sup>	6.75 $\pm$ 0.03 <sup>a</sup>
Fat	43.58 $\pm$ 0.08 <sup>a</sup>	0.08 $\pm$ 0.0015 <sup>b</sup>
Carbohydrate (by difference)	16.51 $\pm$ 0.07 <sup>b</sup>	30.42 $\pm$ 0.05 <sup>a</sup>

Values are means of triplicates  $\pm$  standard deviations

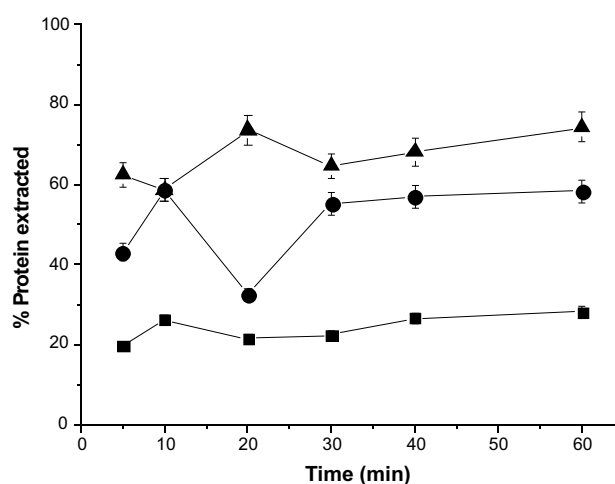
Means with different letters on same row are significantly different.

indicated (SAS, 2002).

## RESULTS AND DISCUSSION

The chemical composition of moringa seed and its defatted flour are reported in Table 1. Fat constituted substantial portion of the kernel weight (39.36 g of fat/100g of sample). Protein content of the flour increased significantly ( $p < 0.05$ ) from 32.7 and 54.4 g/100 g as a result of defatting. A similar significant increase was also observed for carbohydrate and ash contents. Earlier reports by Egbekun and Ehieze (1997) and Aloba *et al.* (2009) showed similar changes in soybeans, beniseed and cashew nut. The high-protein content of the moringa seed and its good balance of essential amino acids (Foidl, 2001) suggest that it can supplement cereal and tuber flours which are not only low in protein but deficient in amino acids.

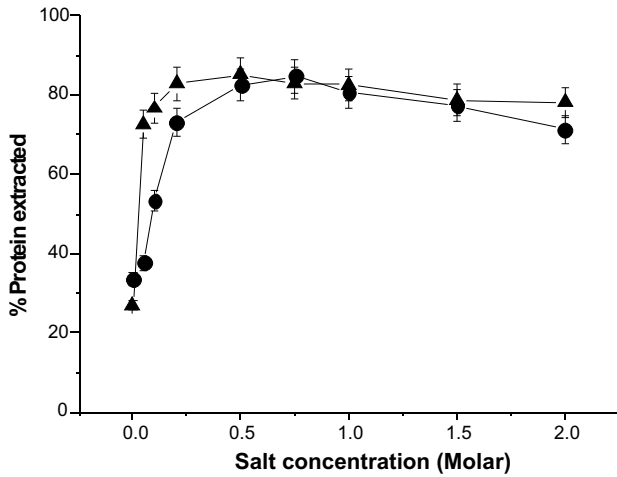
The influence of extraction time on protein extractability from defatted moringa seed flour in three different solvents viz: water, 0.5 M  $\text{CaCl}_2$  and 0.75 M NaCl is shown in Fig. 1. Virtually all of the protein was extracted within 10 to 20 min, which indicated that the bulk of moringa seed protein solubilized within a relatively short period of time. With water (26.11%) and NaCl (58.66%), most of the protein extracted in the initial 10 min compared to  $\text{CaCl}_2$  where maximum protein extraction was obtained at 20 min



**Figure 1** Effect of Time on the Extractability of Proteins from the Defatted Moringa Flour. (■ - Water, ● - NaCl, ▲ -  $\text{CaCl}_2$ )

(73.67%). In the next 10 min., extraction of protein decreased in all solvents which later on increased gradually. This result agreed with the findings of Thompson (1977) for mung bean proteins, reporting that the time of extraction did not have much influence on nitrogen extractability. Jyothirmayi *et al.* (2006) had also reported that extraction of proteins increased till 35 min after which it remained constant.

Protein extractability profile of defatted moringa seed flour in two different salts of various concentrations is shown in Fig. 2. The increase in ionic strength of the salt solutions



**Figure 2** Effects of Different Concentration of NaCl and CaCl<sub>2</sub> on the Extractability of Protein from Defatted Moringa Flour (-●- NaCl, ▲ - CaCl<sub>2</sub>)

increased the protein solubility. With NaCl, protein extraction at 0.05, 0.1, 0.2, 0.5, 0.75, 1.0, 1.5 and 2.0 M concentration were 37.74, 53.28, 73.01, 82.52, 84.72, 80.63, 77.38 and 71.21% respectively. Increase in protein extraction was observed from 33.63% at 0.0 M concentration to 84.72 at 0.75 M concentration. With CaCl<sub>2</sub> the protein extraction at 0.05, 0.1, 0.2, 0.5, 0.75, 1.0, 1.5 and 2.0 M concentration was 72.71, 76.46,

82.71, 85.06, 82.9, 82.55, 78.72 and 78.04% respectively. Increase in protein extraction was also indicated from 33.63% at 0.0 M concentration to 85.06% at 0.5 M concentration. When the salt concentration exceeded optimum levels (eg. 0.75 M and 0.5 M in the case of NaCl and CaCl<sub>2</sub> respectively), protein extractability decreased gradually showing that the extractability of moringa seed proteins depend on the concentration of salt used. El Tinay *et al.* (1980) had earlier shown that protein extractability from cotton seed flour increased as the salt concentration increased with maximum extraction of 75% occurring at 1.0 M CaCl<sub>2</sub>. Similar increases in protein solubility with increase in ionic strength have been reported by McWatters and Holmes (1979) for soy flour. It can be observed in Figure 2 that protein extraction with CaCl<sub>2</sub> is more efficient than NaCl. The improvement of protein extraction caused by salts may be due to the fact that moringa seed protein is composed of more salts soluble globulins. Similar results have been reported for defatted karkade seed flour [Khalid *et al.*, 2003; Gheyasuddin *et al.*, 1970; Hamza, 1995].

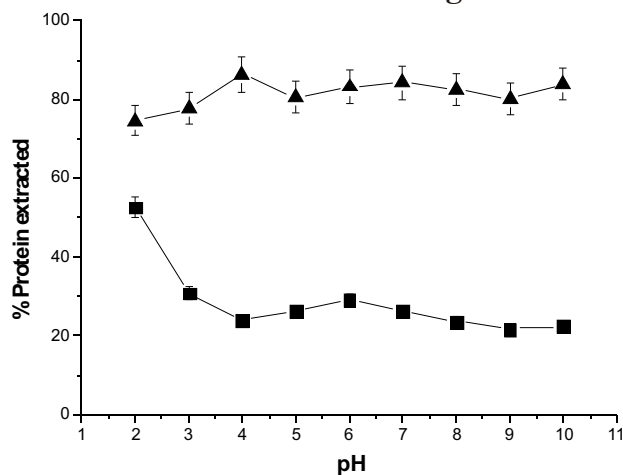
Protein extractabilities of defatted moringa seed flour with different solvent to flour

**Table 2.** Effect of Solvent to Flour Ratio on the Extractability of Proteins from Defatted *Moringa oleifera* Flour

Solvent to flour ratio	% Protein extractability		
	Water	NaCl	CaCl <sub>2</sub>
10:1	39.51±0.021	72.34±0.056	83.52±0.021
15:1	32.70±0.056	74.16±0.056	83.25±0.028
20:1	30.28±0.084	78.19±0.056	82.33±0.035
30:1	26.60±0.056	78.66±0.070	84.40±0.056

ratios are presented in Table 2. It is evident from the data that solvent to flour ratio had very little influence on protein extractabilities with two different solvents (0.5 M CaCl<sub>2</sub> and 0.75 M NaCl). With water, increasing the solvent to flour ratio from 10:1 to 30:1, decreased the percent extractability of protein from 39.51 to 26.60%. However with NaCl, there was a slight increase in nitrogen solubility as the ratio increased from 10:1 to 20:1. Increasing the solvent to flour ratio from

20:1 to 30:1 decreased the extractability of protein from 39.51% to 26.60%. Adel and Mohammed (1981) showed that solvent to flour ratio of 10:1 or less than that had little influence on nitrogen extractability and the percent extractable nitrogen was found to remain more or less constant. Maximum extractability obtained was 83.52% and 78.19% with 0.5 M CaCl<sub>2</sub> and 0.75 M NaCl respectively. These results agree with the findings of Gheyasuddin *et al.* (1970) and Thompson



**Figure 3** Effect of pH on the Extractability of Proteins from the Defatted Moringa Flour (-▲- Water, -■- CaCl<sub>2</sub>)

(1977) for sunflower seed and mung bean proteins respectively.

Nitrogen solubility profiles of defatted moringa seed flour dispersed in water and 0.5 M CaCl<sub>2</sub> are shown in Fig. 3. The response of protein extraction to changing levels of pH in 0.5 M CaCl<sub>2</sub> differed significantly from that of the water suspension. At pH 4.0, protein extraction in water was significantly lower than that of CaCl<sub>2</sub> suspension. McWatters and Holmes (1979) reported similar findings for soy flour protein except that the salt concentration of 0.5 M CaCl<sub>2</sub> was used in the present study. Jyothirmayi (2006) reported pH 3.0-4.0 as the common point of minimum dispersion for proteins of defatted *erythrina variegata* flour. Kanu *et al.* (2007) and Arogundade *et al.* (2006) also reported pH 4.0 as the isoelectric point for sesame protein and broad bean (*Vicia faba* L.) protein extraction. This pattern was unique for defatted moringa seed protein in comparison with many other proteins showing a drop in the protein extractability in the acidic pH range 4.0 - 5.0.

In CaCl<sub>2</sub> sample, the percentage of soluble proteins increased from pH 2.0 - 4.0 followed by a decrease at pH 5.0 and then a gradual increase from pH 5.0 - 7.0. As pH increased further, the soluble protein decreased slightly till pH 9.0 followed by an increase at pH 10.0. Solubility behaviour provides a good index of the potential applications of proteins. Protein solubility at various pH values is a useful indicator of the behaviour of protein materials when incorporated in food systems (Okezie and Bello, 1988).

## CONCLUSION

This work indicates that pH, salt type and concentration and extraction time affect protein extractability from moringa seeds flour. The highest yield of moringa seed flour proteins was extracted at CaCl<sub>2</sub> concentration of 0.5 M and NaCl concentration of 0.75 M. It is established that changing the electrovalent properties of the protein, either by adjusting the pH or modifications in salt concentration influences the functional characteristics of moringa seed flour. This study offers valuable information on the potential of moringa seed flour as a functional agent in a variety of formulated foods.

## ACKNOWLEDGEMENTS

The authors acknowledge Dr. V. Prakash, Director, Central Food Technological Research Institute (CFTRI), Mysore, India and Dr. A.G. Appu Rao, Head, Protein Chemistry and Technology Department for their keen interest and support during this investigation. The third author expresses profound gratitude to the United Nations University, Tokyo Japan for granting a fellowship at CFTRI where this work was carried out.

## REFERENCES

- AOAC 2000. Official methods of analysis of AOAC International, Vol.II, 17th edition. (Ed. Connif, P.) p. 1-37. Association of Official and Analytical Chemists International, Virginia, USA.
- Adel, S.A.Y. and Mohammed T.M. 1981. Extractability of nitrogenous constituents from Iraqi mung bean as affected by pH, salt type and other factors. *J. Agric. Food Chem.*, 29, 53-57
- Alobo, A.P., Agbo, B.N., and Ilesanmi, S.A. 2009. Physicochemical and functional properties of full fat and defatted cashew kernel flours. *Intl. J. Food Sci. Tech.* 44, 581-585
- Aluko, R.E. and Yada, R.Y. 1995. Structure-function relationships of cowpea (*Vigna unguiculata*) globulin isolate: Influence of pH and NaCl on physicochemical and functional properties. *Food Chem.*, 53, 259-265
- ASABE Standards S 410.1. 1998. Moisture Measurement - Peanuts. American Society of Agricultural and Biological Engineers. <http://www.google.com/search?hl=en&q=ASA>

- E+standards+%2B+moisture+cont ent+%2B+pea+nuts&aq=f&oq=&aqi
- Arogundade, L. A., Tshay, M., Shumey, D and Manazie, S. 2006. Effect of ionic strength and/or pH on extractability and physico-functional characterization of broad bean (*Vicia faba* L.) protein concentrate. *Food Hydrocolloids*. 20, 1124-1134.
- Badifu, G.I.O. and Akubor, P.I. 2000. Influence of pH and sodium chloride on selected functional and physical properties of African breadfruit (*Treculia africana*) kernel flour. *Plant Foods for Human Nutr.* 56: 105-115
- Egbekun, M.K. and Ehieze, M.U. 1997. Composition and functional properties of full fat and defatted beniseed (*Sesamum indicum* L.) flour. *Plant Foods for Human Nutr.* 51, 35-41
- Ekpenyong, T.E. 1986. Protein extraction from conophor (*Tetracarpidium conophorum*) seed. *J. Food Sci.* 51 (2), 539-539.
- El Tinay, A., Chandrashekar, H. and Ramanatham, G. (1980). Protein and gossypol extractability from cottonseed flour. *J. Sci. Food Agric.* 31, 38-42
- Foidl, N., Makkar, H.P.S. and Bekker, K. 2001. The potential of *Moringa oleifera* for agricultural and industrial uses. *Moringa Review*. Dar Es salaam, Tanzania
- Folkard, G.K., Sutherland, J.P. and Grant, W.D. 1993. Natural coagulants at pilot scale. In: Pickford, J., Ed. Water, Environment and Management: *Proceedings of the 18<sup>th</sup> WEDC Conference*, Kathmandu, Nepal, Aug. 30 Sept. 3, 1992. Loughborough University Press, pp 51-54.
- Gheyasuddin, S., Cater, C.M. and Mattil, K.F. 1970. Effect of several variables on the extractability of sunflower seed proteins. *J. Food Sci.* 35: 453
- Hamza, A.M. 1995. Factors affecting protein extractability of defatted Karkade (*Hibiscus sabdariffa*) seed flour. *J. King Saud Univ. Agric. Sci.* 2: 179-186
- Hang, Y.D., Steinkraus, K.H. and Hackler, L.R. 1970. Comparative studies on the nitrogen solubility of mung Beans, pea beans and red kidney beans. *J. Food Sci.* 35: 318-320
- Inyang, U.E. and Idub, A.O. 1996. Influence of pH and salt concentration on protein solubility, emulsifying and foaming properties of sesame protein concentrate. *J. Amer. Oil Chem. Soc.* 73(12), 1663-1667
- Jose, T.A.O., Silvana, B.S., Ilka, M.V., Benildo, S.C. and Renato, A.M. 1999. Compositional and nutritional attributes of seeds from the multiple purpose tree *Moringa oleifera* L. *J. Sci. Food Agric.*, 79: 815-820
- Jyothirmayi, T., Prabhakara Rao, P. G. and Walde, S. G. 2006. Nitrogen extractability and functional properties of defatted erythrina variegata flour. *Food chem.* 96: 242-247
- Katayon, S., Megat Mohd Noor, M.J., Asma, M., Abdul Ghani, L.A., Thamer, A.M., Azni, I., Ahmad, J., Khor, B.C. and Suleyman, A.M. 2006. Effects of storage conditions of *Moringa oleifera* seeds on its performance in coagulation. *Biores. Technol.* 97: 1455-1460.
- Khalid, E.K., Babiker, E. and El Tinay, A.H. 2003. Solubility and functional properties of sesame seed proteins as influenced by pH and/or salt concentration. *Food Chem.* 82: 361-366
- Kinsella, J.E. 1979. Functional properties of soy proteins. *J. Amer. Oil Chem. Soc.* 56: 542-558
- Lawal, O. S. 2004. Functionality of African locust bean (*Parkia biglobosa*) protein isolate: effect of pH, ionic strength and various protein concentrations. *Food Chem.* 86: 345-355
- Mahgoub, S.E.O. and Elbashir, H.Z.E. 2009. Proximate composition of karkade (*Hibiscus sabdariffa*) seeds and some functional properties of seed protein isolate as influenced by pH and NaCl. *Int. J. Food Sci. Nutri.* 60(3): 183-194
- Molina, M.R., Carlos, E.A. and Ricardo, B. 1974. Extraction of nitrogenous constituents from jack bean (*Canavalia ensiformis*). *J. Agric. Food Chem.*, 22(2): 309-312
- McWatters, K.G. and Holmes, M.R. 1979. Influence of pH and salt concentration on nitrogen solubility and emulsification properties of soy flour. *J. Food Sci.*, 44, 770-773
- Munasinghe, D. M. S and Sakai, T. 2004. Sodium chloride as a preferred protein extractant for pork lean meat. *Meat Sci.* 67: 696-703
- Ogunsina, B.S., Radha, C. and Govardhan Singh, R.S. 2010. Physicochemical and functional properties of full fat and defatted *Moringa oleifera* seed flours. *Intl. J.*

- Food Sci. Tech.* 45: 24332439
- Okezie, B.O. and Bello, A.B. 1988. Physicochemical and functional properties of winged bean flour and isolate compared with soy isolate. *J. Food Sci.* 53(1): 450-454
- Onweluzo, J. C., Obanu, Z. A. and Onuoha, K. C. 1994. Functional properties of some lesser known tropical legumes. *Journal Food Sci. Tech.* 31: 302-306
- Kanu, P. J., Zhou, H. M., Kanu, J. B., Zhu Ke-xue., Zhu ke-rui and Kian, H. 2007. The use of response surface methodology in predicting sesame protein extractability with water and the analysis of the protein extracted for its amino acid profile. *Biotechnol.* 6(4): 447-455
- Pick-Seng, L. and Kinsella, J.E. 1972. Extractability and properties of protein from alfalfa leaf meal. *J. Food Sci.* 37: 94-99
- Prakash, V. 1986. Effect of sodium chloride on the extractability of proteins from sesame seed (*Sesamum indicum* L.). *J. Agric. Food Chem.* 34: 259-261
- Ragab, D. M., Babiker, E. E. and Eltinay, A. H. 2004. Fractionation, solubility and functional properties of cowpea (*Vigna unguiculata*) proteins as affected by pH and/or salt concentration. *Food Chem.* 84: 207-212.
- SAS. 2002. *Statistics Analytical Software Guide for Personal Computers*. Release 9.1. SAS Institute inc., Cary, North Carolina, 27513, USA.
- Thompson, L.U. 1977. Preparation and evaluation of mung bean protein isolates. *J. Food Sci.* 42: 202-206.

**Ife Journal of Science**  
**Tables of Contents: June Edition 2011; Vol. 13, No. 1**

Omotoye Olorode, Sekinat O. Hassan, Olajumoke A. Olabinjo and Idris O. Raimi	Tithonia (Asteraceae) in Nigeria	1
Obuotor E.; Adewumi A. A. and Olaleye V. F.	The Effect of Copper on Some Laboratory Indices of <i>Clarias Gariepinus</i> (Burchell 1822).	11
Salami, B. M. Conte, R. A. and Falebita, D. E.	Geoelectric Evaluation of the Groundwater Potential of Parts of Osogbo, Southwestern, Nigeria	17
Ogunfowokan A.O., Akanni M.S., Ajibola R.O and Ayinde F.O.	Trophic Status and Physico-Chemical Parameters of Three Reservoirs in Osun State Nigeria	27
Oláyiwolá M.A <sup>1</sup> and Odébòdé M.O.	Foraminiferal Distribution of Southwestern Nigeria's Offshore Littoral Sediments: Benthic Faunal Diversity Indices and Patterns	45
Chinedu S.N., Okochi V. I. and Omidiji O.	Cellulase Production by Wild Strains of <i>Aspergillus Niger</i> , <i>Penicillium Chrysogenum</i> and <i>Trichoderma Harzianum</i> Grown on Waste Cellulosic Materials.	57
Bayode S. and Akpoarebe O.	An Integrated Geophysical Investigation of a Spring in Ibuji, Igbara-Oke, Southwestern Nigeria.	63
M. O. Adepoju and J. A. Adekoya	Reconnaissance Geochemical Study of a Part of Igarra Schist Belt, Southwestern Nigeria	75
Adesina, G.O., Akinyemiju, O.A. and Muoghalu, J.I.	Checklist of the Aquatic Macrophytes of Jebba Lake, Nigeria	93
Fasasi, K. A., Malaka, S. L. O. and Amund, O. O.	Studies on the Life Cycle and Morphometrics of Honeybees, <i>Apis Mellifera Adansonii</i> (Hymenoptera: Apidae) In A Mangrove Area of Lagos, Nigeria.	103
A.O. Olorunfemi, K.S. Salahudeen and T.A. Adesiyani	Ground Water Quality in Ejigbo Town and Environs, Southwestern Nigeria	111
Govardhan Singh, R.S; Ogunsina, B.S. and Radha, C.	Protein Extractability from Defatted <i>Moringa Oleifera</i> Lam. Seeds Flour	121
A. M. A. Sakpere	Identification of ISSR Primers for Genetic Analysis of <i>Telfairia Occidentalis</i> Hook F.	129
O. K. Owoade, F. S. Olise, H. B. Olaniyi, I. B. Obioh and E. Bolzacchini	Mass and Energy Audit in a Nigerian Iron and Steel Smelting Factory: An Operational and Efficiency Study.	133
F. A. Oloyede, B. Aponjolosun & A. A. Ogunwole	Reproductive Potentials of a Tropical Fern <i>Cyclosorus Afer</i> (Christ.) Ching (Thelypteridaceae: Pteridopyhte) at Obafemi Awolowo University, Ile Ife, Nigeria	143
M.O.Olawole, L. Msimanga, S.A.Adegboyega & F.A. Adesina	Monitoring and Assessing Urban Encroachment into Agricultural Land - A Remote Sensing and GIS Based Study of Harare, Zimbabwe	149
Benjamin, U.K and Nwachukwu, J.I	Model Compaction Equation for Hydrostatic Sandstones of the Niger Delta. 161	
J.O. Ojo and C.E. Adeeyinwo	Dependence of Vanadium Recovery on Oxidation State in its Solvent Extraction from Hydrochloric Acid Solutions With TRI N Butyl Phosphate	175
Akintorinwa, O. J., Ojo J. S. and Olorunfemi M. O.	Appraisal of the Causes of Pavement Failure along the Ilesa - Akure Highway, Southwestern Nigeria Using Remotely Sensed and Geotechnical Data	185
O. J. Matthew and O. O. Jegede	Modelling Soil Surface Temperature and Heat Flux Using Force-Restore Method at an Agricultural Site in Ile-Ife, Nigeria.	199
Ojo J.F.	On the Theory of One Dimensional Integrated Autoregressive Bilinear Time Series Modelling	209