



ORIGINAL ARTICLE

## Diagnostic and prognostic value of circulating tumor cells in female breast cancer patients

Samia A. Ebeed, Nadia A. Abd El-Moneim, Ahmed Saad, Ebsam RE. Zaher \*, Omayma G. Yassin, Shadwa A. Khamis

Medical Research Institute, Radiation Sciences, 165 Elhorreya Avenue, Alexandria, Egypt

Received 27 November 2011; accepted 15 February 2012

Available online 12 July 2012

### KEYWORDS

Circulating tumor cells;  
Breast cancer;  
Metastasis

**Abstract** *Aim:* The aim of the current study is to detect CTCs in the blood of breast cancer females by the expression of Mammoglobin and Mucin-1 to evaluate their potential as diagnostic and prognostic markers of breast cancer and predictors of metastasis.

*Subjects and methods:* The study involved 50 patients and thirty controls. Fifty patients recently diagnosed with breast cancer were proved by fine needle aspiration cytology or core biopsy, all the patients were operated upon by modified radical mastectomy under general anesthesia after complete preoperative evaluation. From each subject a blood sample was drawn before surgery, 2 weeks after surgery and after 6 cycles of chemotherapy. Mononuclear cells were separated from 7.5 ml blood using a phicoll gradient. From these cells mRNA was extracted, and RT-PCR was carried out to detect Mammoglobin and Mucin-1 gene expression from CTCs. Also CA 15.3 was measured in all the samples.

*Results:* CTCs were detected in more than 80% of primary breast cancer patients at presentation, that percent decreased after surgery and after adjuvant chemotherapy. CTCs detection after surgery and after chemotherapy was significantly correlated with tumor size, grad, vascular invasion and metastasis. CTCs posed an almost two-fold risk of metastasis and significantly lower DFS time in positive than in negative patients. Detection of CTCs in peripheral blood after chemotherapy successfully predicted subsequent metastasis.

*Conclusion:* The hematogenous spread of tumor cells in patients with breast cancer may be an early phenomenon occurring before/apart from regional lymph nodes involvement. CTCs detection by RT-PCR could add to the initial evaluation of primary breast cancer patients. Also, adjuvant

\* Corresponding author.

E-mail address: ebsam.zaher@alex-mri.edu.eg (E.RE. Zaher).

Peer review under responsibility of Alexandria University Faculty of Medicine.



chemotherapy might eliminate or decrease occult tumor cells. But CTCs evaluation after adjuvant chemotherapy could predict metastasis and the presence of CTCs after chemotherapy reflect a higher potential for subsequent metastasis.

© 2012 Alexandria University Faculty of Medicine. Production and hosting by Elsevier B.V. All rights reserved.

## 1. Introduction

Breast cancer is a major public health problem for women throughout the world. It is the most frequent cancer in women and the second leading cause of death.<sup>1</sup> In Alexandria, Egypt, breast cancer incidence was estimated to be 41.2% of all malignancies in females in 2007.<sup>2</sup>

Some of the key decisions in the current management of primary breast cancer involve the need for prognostication; which is especially important in identifying patients whose prognosis is so favorable or patients whose prognosis is so poor with conventional treatment as to warrant consideration of more aggressive investigational therapies. The most useful and consistent of these prognostic factors are the number of positive axillary nodes, tumor size, poor differentiation, vascular invasion and estrogen and progesterone receptors.<sup>3</sup> In addition, breast cancer is a leading cause of mortality; primarily due to the failure of effective clinical detection and the treatment of metastatic diseases. Up to 30% of patients still succumb to the disease within the ten-year period following diagnosis.<sup>4,5</sup> It remains difficult to accurately predict which patients will develop metastatic disease and over what time scale. The metastatic process is comprised of a series of sequential steps, including dissemination of cancer cells from the primary tumor into the blood stream (intravasation), survival in circulation, arrest and extravasation in a secondary site and initiation and maintenance of growth to form clinically detectable masses. Cancer cells must successfully complete all steps to form a metastatic tumor.<sup>6-8</sup>

Given the multistep nature of metastatic cascade, there should be several opportunities for early identification and therapeutic targeting of metastatic cells before they become a clinical problem. In fact, there is growing evidence that the presence of circulating tumor cells (CTCs) in the blood may be an important indicator of the potential for metastatic disease and poor prognosis.<sup>9,10</sup>

The ability to consistently detect, track and characterize rare CTCs in cancer patients holds tremendous promise in terms of identifying the potential for metastatic disease at very early stages, managing risk stratification in the adjuvant setting, monitoring response to treatment and monitoring disease recurrence. Identification of CTCs in blood depends on exploiting phenotypic differences between epithelial tumor cells and cells of hematopoietic origin using either tumor-type-specific markers or epithelial-specific markers.<sup>10</sup>

The aim of the current study is to detect CTCs in the blood of breast cancer females by the expression of Mammoglobin and Mucin-1 to evaluate their potential as diagnostic and prognostic markers of breast cancer, and predictors of metastasis. In a preliminary study on 30 breast cancer patients that was carried out in our lab, the results were inclusive, so, this

study was carried out with a larger cohort hoping to reach more conclusive results.

## 2. Subjects and methods

### 2.1. Subjects

The study was approved by the Ethics Committee and by the Institutional Review Board of the Medical Research Institute, Alexandria University, Egypt. All samples were collected with the patients' informed written consent, and confidentiality of data was insured at all stages of the study.

For this prospective cohort study, fifty females recently diagnosed with breast cancer were randomly recruited from the Experimental and Clinical Surgery Department and Cancer Management and Research Department, Medical Research Institute, Alexandria University, during the period from September 2007 till October 2008. All patients were premenopausal females, diagnosed with primary breast cancer, as indicated by fine-needle biopsy or core biopsy. Eligibility criteria included confirmed diagnosis of breast cancer, no metastasis at the time of recruitment, no previous treatment, no previous malignancies and good cardiac, liver and kidney function. All patients were subjected to complete physical examination and a complete diagnostic evaluation to exclude the presence of distant metastases, consisting of chest X-rays, ultrasound of the liver, and a whole-body bone scan. Computed tomography scans and/or magnetic resonance imaging studies were performed if clinically indicated.

An informed written consent was taken from each patient. All patients were treated primarily with Modified Radical Mastectomy,<sup>11</sup> followed adjuvant FAC-based combination chemotherapy (6 cycles each one consisted of 5-fluorouracil 500 mg/m<sup>2</sup>, adriamycin 50 mg/m<sup>2</sup> and cyclophosphamide 500 mg/m<sup>2</sup>, given every 21 days). Patients who were positive for estrogen and progesterone receptors received hormonal therapy (Nolvadex tablets 10 mg, 2 tablets/day for 5 years) after chemotherapy.<sup>12</sup> Patients were clinically followed up for 48 months after completing chemotherapy.

In addition, thirty normal, healthy volunteer females of matched age as the patients group, were included as a control group.

### 2.2. Sampling

From each subject 10-ml venous blood samples were collected, once from control subjects and 3 times from group 1 patients (before surgery, 2 weeks after surgery and after 6 cycles of chemotherapy). 7.5 ml was processed using gradient centrifugation by Ficoll-Paque Plus (Biochrom AG, Berlin, Germany) to obtain the buffy layer that would contain CTCs, if present,

with other white blood cells. Cells were washed twice by PBS and then pelleted and stored. The remaining 2.5 ml of blood was left to clot then centrifuged to obtain serum. All cells and serum samples were stored at  $-80^{\circ}\text{C}$  until they were used.

### 2.3. RNA extraction

Total RNA was extracted from all cell samples using the SV Total RNA Isolation System (Promega Corporation, Madison, USA), the procedure was carried according to the manufacturer's instructions. Cells were thawed in lysis buffer, then diluted and centrifuged at  $12,000\text{--}14,000\times g$  for 10 min to remove the cell debris. RNA was precipitated from the cleared lysate using 95% ethanol and separated through spin columns, where RNA is washed and treated by DNase and washed again before it was eluted by  $100\ \mu\text{l}$  of nuclease-free water.

The amount of total RNA extracted was assessed spectrophotometrically using NanoDrop<sup>®</sup> ND-1000 UV-Vis Spectrophotometer to measure the optical density at 230, 260 and 280 nm. All samples included in the study had  $A_{260}/A_{280}$  ratio ranging from 1.7 to 2.1.

### 2.4. RT-PCR for Mammoglobin and Mucin-1

Reverse transcription was carried out using Reverse Transcription System (Promega, Madison, USA) that used AMV Reverse Transcriptase and oligo (dT)<sub>15</sub> primer to synthesize single-stranded cDNA from total RNA according to the manufacturer's instructions.

PCR was carried out using Go Taq<sup>®</sup>Green Master Mix (Promega Corporation, Madison, USA). Each PCR reaction mixture consisted of  $12.5\ \mu\text{l}$  PCR master mix;  $1\ \mu\text{l}$  of each amplification primer ( $400\ \text{pmol}/\mu\text{l}$ ) and  $1\ \mu\text{g}$  cDNA and the volume was brought to  $25\ \mu\text{l}$  by adding deionized water. The primers used for the amplifications were as follows; Mammoglobin F-5'-CGGATGAACTCTGAGCAATGT and R-5'-CTGCAGTTCTGTGAGCCAAAG to produce a 108 bp fragment, Mucin-1 F-5'-ACTACTACCAAGAGCTG and R-5'-CTCATAGGATGGTAGGT to produce a 238 bp fragment, and  $\beta$ -actin as a house-keeping gene F-5'-ATGCCATCTGCGTCTGGACCTGGC and R-5'-AGCATTTGCGGTGCGACATGGAGGG to produce a 607 bp fragment. Thermal cycling started by a first denaturation step of 4 min at  $95^{\circ}\text{C}$ , followed by 40 cycles of  $94^{\circ}\text{C}$  for 30 s,  $64^{\circ}\text{C}$  for 30 s and  $72^{\circ}\text{C}$  for 60 s and a final extension at  $72^{\circ}\text{C}$  for 10 min. PCR products were then separated by gel electrophoresis, stained by ethidium bromide, visualized by UV and photographed.

### 2.5. Measurement of CA 15.3 by IRMA

CA 15.3 was measured in all serum samples collected by Immunoradiometric Assay (IRMA) using a commercially available kit (DIAsource ImmunoAssays S.A., Nivelles, Belgium). According to manufacturer's instructions,  $20\ \mu\text{l}$  of each sample was diluted with  $500\ \mu\text{l}$  diluent and  $50\ \mu\text{l}$  of diluted sample or calibrator was dispensed into antibody-coated tubes. The tubes were aspirated and washed twice, then  $50\ \mu\text{l}$  of  $^{125}\text{I}$ -labeled anti-CA 15.3 was added to each tube, after incubated for 90 min/RT on shaker, tubes were aspirated and washed twice, and counted on a Gamma Counter. Sample con-

centrations were determined by interpolation from the standard curve.

### 2.6. Statistical analysis

Statistical analysis was performed using the SPSS (Statistical Package for the Social Sciences) software version 18.0 (SPSS Inc., Chicago, IL, USA).

#### 2.6.1. Variables manipulation

The CA 15.3 was converted from a quantitative variable to a dichotomous variable using its median value among the controls as the cut off level criterion. Estrogen receptor (ER), progesterone receptor (PR), Mammoglobin, and Mucin-1 were also converted to dichotomous variables either negative or positive by combining several grades of positivity into positive.

#### 2.6.2. Data analysis

For variables' description, the percent was used for qualitative variables and the mean with the standard deviation for quantitative normally distributed variables, while the not normally distributed variables were described by the median and range. Testing the changes in percentage positives for the biochemical parameters at different times; before surgery, after 2 weeks of surgery and after 6 cycles of treatment was done using the Cochran's Q test. The relative risk with its 95% confidence interval was used to assess the risk of metastasis among those whose biochemical parameters were positive relative to those whose biochemical parameters were negative. Relative risk of value 1 indicates no risk and relative risk more than 1 indicates an increased risk. To be significant, the 95% confidence interval should not include 1.0. The cumulative proportion metastasis free surviving through the follow up duration was illustrated via the Kaplan-Meier survival curve, using the mean survival time and its 95% confidence interval as descriptive for the different survival times. Comparisons between the different survival distributions were done using the logrank test. The prognostic accuracy for the biochemical parameters before surgery, 2 weeks after surgery and 6 cycles after treatment was demonstrated by the different Receiver Operating Characteristic (ROC) Curves, the areas under the curves (AUCs) were indicators for the accuracy of the biochemical parameter. For the AUC to be significant its 95% lower confidence interval should be above .50. All tests were 2 sided and alpha was set at 0.05.

## 3. Results

### 3.1. Description of the study sample

A cohort of fifty breast cancer females with a mean age and standard deviation of  $45 \pm 4.6$  years, the mean tumor size was  $3.2 \pm 1.7$  cm. Half the cohort (50%) had moderately differentiated tumor while 48% had poorly differentiated tumor. The median number of lymph nodes metastasis was 2 ranging from 0 to 15. More than half the sample (58.0%) had vascular invasion and the majority were either stage 2 (56%) or stage 3 (40%). Positive estrogen receptor and positive progesterone receptor were each present in 84% of the cohort; (Table 1).

**Table 1** Description of the females cancer breast patients by clinic pathological parameters ( $n = 50$ ).

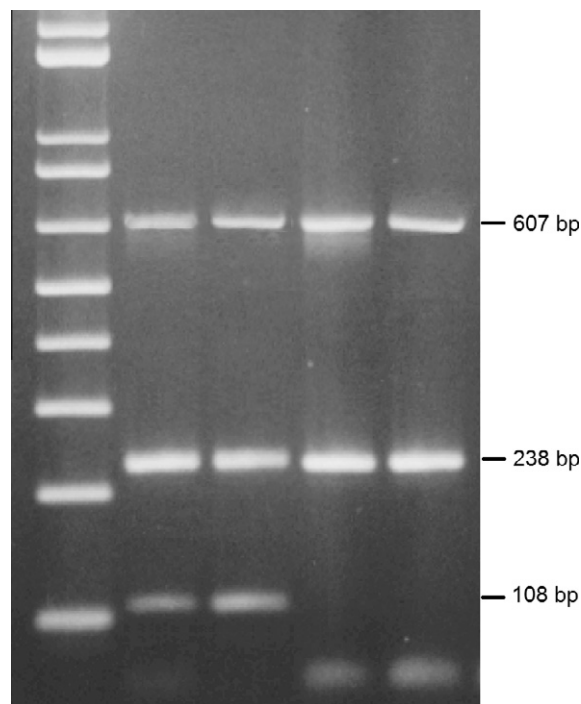
Clinico-pathological parameter		<i>N</i>	%
Age in years ( $\bar{X} \pm S$ )		45 $\pm$ 4.6	
Tumor size in cms ( $\bar{X} \pm S$ )		3.2 $\pm$ 1.7	
Grade of differentiation	1	1	2.0
	2	25	50.0
	3	24	48.0
Lymph node metastasis (Mdn, range)		2 (0–15)	
+ ve Vascular invasion		29	58.0
Stage	1	1	2.0
	2	28	56.0
	3	21	42.0
Estrogen receptor + ve		42	84.0
Progesterone receptor + ve		42	84.0

### 3.2. Changes in Mammoglobin and Mucin-1 expression and CA 15.3 levels at different study points

Fig. 1 represents the gel electrophoresis of the RT-PCR products showing the 108 bp band of Mammoglobin, 238 bp band of Mucin-1 and the 607 bp band of the house keeping gene  $\beta$ -actin. For Mammoglobin, 80% showed positive expression before surgery, 60% after surgery while 54% after treatment. These differences were statistically significant (Cochran's  $Q = 14.70$ ,  $p = 0.001$ ). Similarly, Mucin-1 expression was positive in 86% before surgery, in 84% after surgery, while in 54% after treatment. These differences were also statistically significant (Cochran's  $Q = 22.21$ ,  $p < 0.001$ ). Regarding CA 15.3, a reversed pattern was observed, where the positive percent was 20% before surgery, 24% after surgery, while 44% after treatment. These differences were also statistically significant (Cochran's  $Q = 13.78$ ,  $p = 0.001$ ); (Table 2).

### 3.3. Diagnostic potential of Mammoglobin, Mucin-1 and CA 15.3 for breast cancer

Expression of Mammoglobin and Mucin-1 before surgery proved a statistically significant diagnostic accuracy for breast cancer ( $p = 0.000$  and  $0.000$ , respectively) (Fig. 2). Mammoglobin had an AUC = 0.90, 95% at CI: 0.829, 0.971, with a corresponding sensitivity of 80% and specificity of 100%. While Mucin-1 had an AUC = 0.93, 95% at CI: 0.870, 0.990, with a corresponding sensitivity of 86% and specificity of 100%. While CA 15.3 was not of any diagnostic significance with an AUC = 0.263, 95% CI: 0.142, 0.384, the best cut off point was 12.5 ng/ml with a sensitivity of 42% and a specificity of 22%.

**Figure 1** Gel electrophoresis of RT-PCR products of Mammoglobin (108 bp), Mucin-1 (238 bp) and  $\beta$ -actin (607 bp).

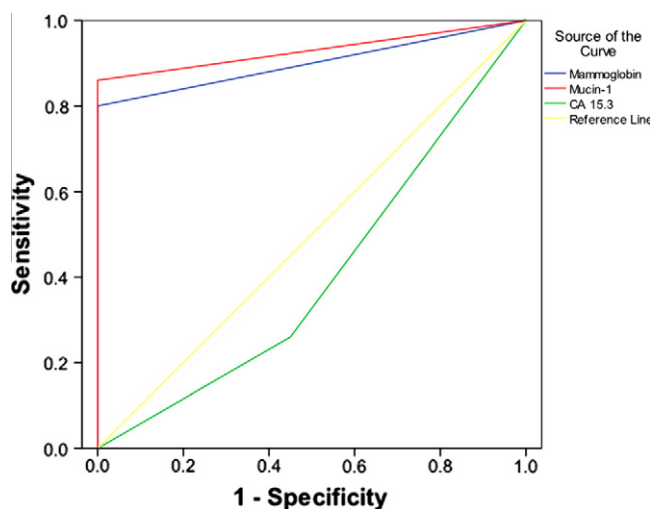
Before surgery, neither Mammoglobin nor Mucin-1 expression showed a significant correlation with any of the clinical parameters involved in breast cancer. While after surgery and after chemotherapy, Mammoglobin and Mucin-1 were sig-

**Table 2** Changes in the percentage expression of all parameters; before surgery, 2 weeks after surgery, & after 6 cycles of treatment.

Biochemical parameter	Before Surgery	After surgery	After treatment	Test of significance**	<i>P</i> value
	<i>n</i> (%)	<i>n</i> (%)	<i>n</i> (%)		
Mammoglobin + ve	40 (80)	30 (60)	27 (54)	14.70	0.001*
Mucin-1 + ve	43 (86)	42 (84)	28 (54)	22.21	0.001*
CA 15.3 + ve	10 (20)	12 (24)	22 (44)	13.78	0.001*

\*\* Cochran's Q test.

\* Highly significant.



**Figure 2** ROC curve of Mammoglobin, Mucin 1 and CA 15.3 as diagnostic markers for breast cancer before surgery.

nificantly correlated with vascular invasion, stage and metastasis. Only Mucin-1 correlated with tumor size and only Mammoglobin correlated with lymph node metastasis (Table 3). Other parameters including age, ER, PR and grade were not correlated with either Mammoglobin or Mucin-1 at any time. Mammoglobin and Mucin-1 were correlated with each other at

all times. CA 15.3 did not show any correlation with any of the clinical parameters evaluated at any time.

**3.4. The relative risks for metastasis estimated at different study points**

Before surgery, the relative risk of metastasis was not significantly higher in Mammoglobin positive (RR = 1.6, 95% CI: 1.03, 2.48), Mucin-1 positive (RR = 1.3, 95% CI: .77, 2.30) and CA 15.3 positive (RR = 1.1, 95% CI: 0.59, 2.26). After 2 weeks of surgery, the relative risk of metastasis was significantly higher only in Mucin-1 positive (RR = 2.1, 95% CI: 1.52, 2.88) but no significant risk was detected either in Mammoglobin positive or in CA 15.3 positive (Table 4). After 6 cycles of treatment, the relative risk of metastasis was significantly higher both in Mammoglobin positive relative to Mammoglobin negative (RR = 1.8, 95% CI: 1.10, 3.04), and in Mucin-1 positive relative to Mucin-1 negative (RR = 1.8, 95% CI: 1.03, 2.79) meanwhile no significant risk was observed in CA 15.3 positive (RR = 1.7, 95% CI: 0.94, 2.91) (Table 5).

**3.5. Metastasis free survival based on Mammoglobin and Mucin-1 expression and CA 15.3 levels**

About 46% of breast cancer patients developed metastasis by the end of follow up duration. The mean metastasis free survival time was 32.9 months (95% CI: 27.9, 37.9). Before surgery; the mean metastasis free survival time was 42.6 months

**Table 3** Correlations between Mammoglobin and Mucin-1, 2 weeks after surgery and after 6 cycles of chemotherapy with various clinical parameters.

Parameter	Mammoglobin (r,p)*		Mucin-1 (r,p)*					
	After surgery		After treatment		After surgery		After treatment	
Tumor size					0.404	0.004	0.288	0.043
Stage			0.320	0.023	0.325	0.012	0.333	0.018
Vascular invasion	0.296	0.037	0.353	0.012	0.339	0.016	0.389	0.005
Lymph node metastasis			0.320	0.023				
Metastasis	0.320	0.023	0.333	0.018	0.474	0.001	0.299	0.035
Mucin-1	0.625	0.000	0.491	0.000				

\* r is Spearman's two-tailed correlation coefficient and p is the significance, the correlation is significant when p ≤ 0.05.

**Table 4** The relative risk for breast cancer metastasis according to the biochemical parameters, 2 weeks after surgery.

Biochemical parameter	No Metastasis (28) n (%)	Metastasis (22) n (%)	RR	95% CI
<b>Mammoglobin</b>				
-ve**	14 (66.6)	6 (33.4)		
+ve	14 (48.3)	16 (51.7)	1.4	.85, 2.24
<b>Mucin-1</b>				
-ve**	8 (100.0)	0 (0.0)		
+ve	20 (47.6)	22 (52.4)	2.1*	1.53, 2.88
<b>CA 15.3</b>				
-ve**	23 (60.5)	15 (39.5)		
+ve	5 (41.7)	7 (58.3)	1.5	.71, 2.98

\* Significant.  
\*\* Reference category.



**Table 5** The relative risk for breast cancer metastasis according to the biochemical parameters, after 6 cycles of treatment.

Biochemical parameter	No Metastasis (28) n (%)	Metastasis (22) n (%)	RR	95% CI
<i>Mammoglobin</i>				
-ve **	17 (73.9)	6 (26.1)	1.8*	1.10, 3.04
+ ve	11 (40.7)	16 (59.3)		
<i>Mucin-1</i>				
-ve **	17 (73.9)	6 (26.1)	1.8*	1.03, 2.79
+ ve	11 (40.7)	16 (59.3)		
<i>CA 15.3</i>				
-ve **	19 (67.9)	9 (32.1)	1.7	.94, 2.91
+ ve	9 (40.9)	13 (59.1)		

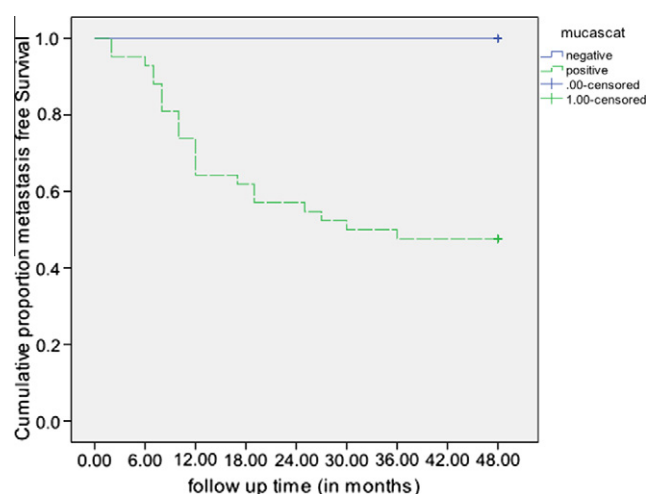
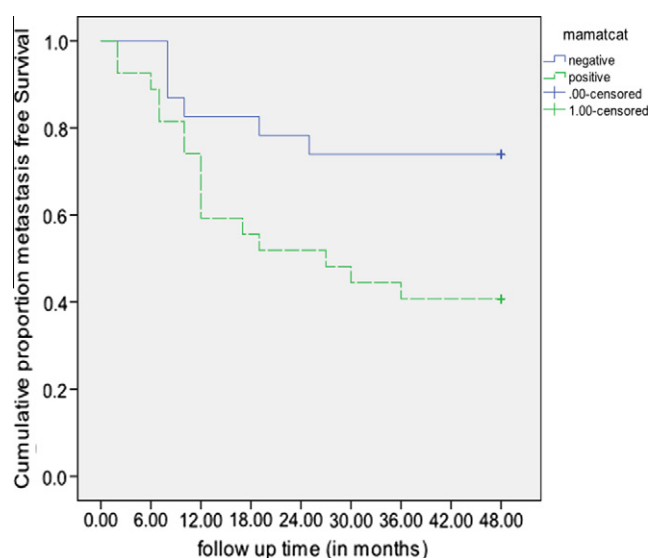
\* Significant.

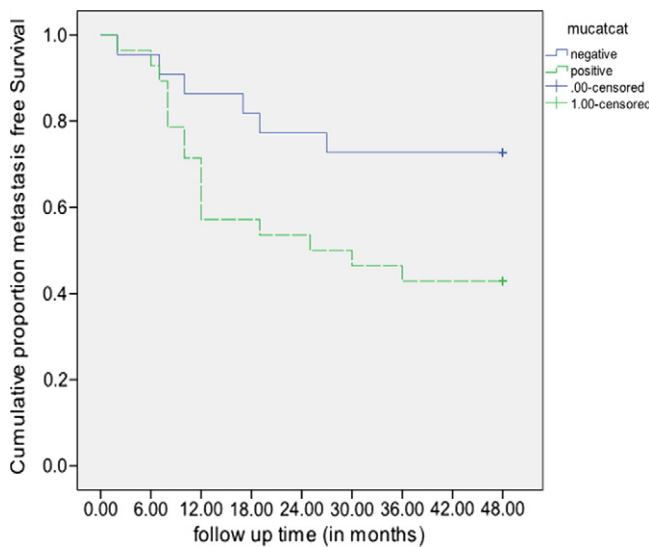
\*\* Reference category.

(95% CI: 34.7, 50.5) in Mammoglobin negative compared to 30.4 months (95% CI: 24.7, 36.1) in Mammoglobin positive, though this apparent difference, the survival distributions were not statistically significantly different (logrank = 2.59,  $p = 0.108$ ). For Mucin-1, the mean metastasis free survival time was 40.3 months (95% CI: 29.5, 51.1) in Mucin-1 negative compared to 31.7 months (95% CI: 26.2, 37.1) in Mucin-1 positive, but no significant difference was detected between both survival distributions (logrank = 0.74,  $p = 0.390$ ). As regards the CA 15.3, the mean metastasis free survival time was 33.8 months, (95% CI: 28.4, 39.3) in CA 15.3 negative compared to 29 months, (95% CI: 17.2, 40.8) in CA 15.3 positive, but without statistical significant difference in the survival distributions (logrank = 0.26,  $p = 0.608$ ).

After surgery; the mean metastasis free survival time was 35.3 months (95% CI: 27.6, 43.1) in Mammoglobin negative compared to 31.1 months (95% CI: 24.6, 37.6) in Mammoglobin positive, but the difference in survival distributions was not statistically significant (logrank = 1.12,  $p = 0.291$ ). The cumulative metastasis free survival distribution was statistically significantly higher in Mucin-1 negative relative to those that were Mucin-1 positive. (logrank = 5.90,  $p = 0.015$ ) (The mean survival times were not computed as all Mucin-1 negative were censored) (Fig. 3). As regards, CA 15.3 the mean metastasis free survival time was 34.4 months (95% CI: 28.7, 40.1) in CA 15.3 negative compared to 28.1 months (95% CI: 18.0, 38.2) in CA 15.3 positive, however the difference in survival distributions was not statistically significant (logrank = 1.11,  $p = 0.292$ ).

After 6 cycles of treatment; a statistically significant difference in the survival distributions was observed between Mammoglobin negative and Mammoglobin positive (logrank = 5.15,  $p = 0.023$ ), with a mean survival time (38.9 months, 95% CI: 32.4, 45.3 vs 27.7 months, 95% CI: 20.8, 34.7 respectively) (Fig. 4). Likewise, a statistically significant difference in the survival distributions was detected between Mucin-1 negative and Mucin-1 positive (logrank = 4.17,  $p = 0.041$ ), with a mean survival time (38.6 months, 95% CI: 32.0, 45.3 in Mucin-1 negative vs 28.3 months, 95% CI: 21.5, 35.1 in Mucin-1 positive) (Fig. 5). Meanwhile, the CA 15.3 did not prove a statistically significant difference in the survival distributions between those CA 15.3 negative and those positive (logrank = 2.95,  $p = 0.086$ ), though the mean metastasis free sur-

**Figure 3** Metastasis free survival in breast cancer females negative and positive to Mucin-1, 2 weeks after surgery.**Figure 4** Metastasis free survival in breast cancer females negative and positive to Mammoglobin, after 6 cycles of treatment.

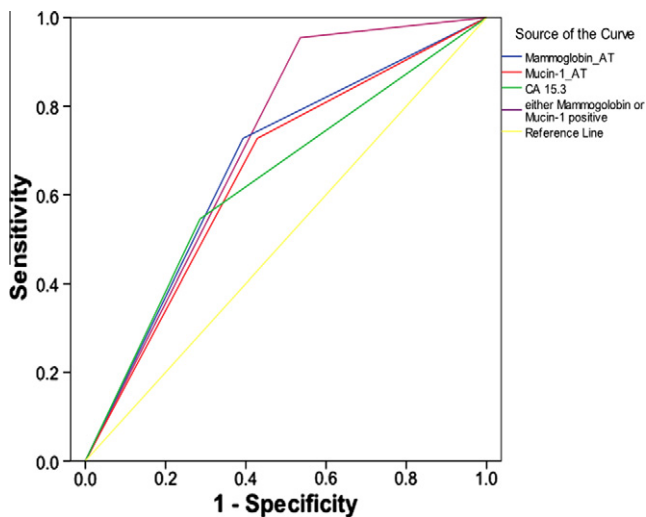


**Figure 5** Metastasis free survival in breast cancer females negative and positive to Mucin-1, after 6 cycles of treatment.

vival time was 36.9 months, 95% CI: 30.5, 43.2 in CA 15.3 negative compared to 27.8 months, 95% CI: 20.3, 35.2 in CA 15.3 positive.

### 3.6. Evaluation of the accuracy of Mammoglobin and Mucin-1 expression and CA 15.3 levels

The prognostic accuracy for anticipating metastasis of none of the biochemical parameters was statistically significant either before or after 2 weeks of surgery. On the other hand, after 6 cycles of treatment, Mammoglobin and Mucin-1 proved a significant prognostic accuracy with an AUCs = 0.667, 95% at CI: 0.515, 0.820 and 0.649, 95% CI: 0.495, 0.804; respectively. While CA 15.3 was not of any prognostic significance with AUC = 0.635, 95% CI: 0.477, 0.792 (Fig. 6).



**Figure 6** ROC curve for Mammoglobin, Mucin-1 and CA 15.3 as prognostic markers for metastasis in females with breast cancer after 6 cycles of chemotherapy.

When constructing the ROC curve combining both Mammoglobin and Mucin-1, considering cases that are Mammoglobin positive and/or Mucin-1 positive as positive, the ROC curve demonstrated a statistically significant diagnostic accuracy ( $p = 0.01$ ) with an AUC = 0.710; 95% CI: 0.566, 0.853; that was slightly higher than either Mammoglobin alone or Mucin-1 alone (Fig. 6).

## 4. Discussion

Breast cancer is the most frequently diagnosed cancer and the leading cause of cancer death in females worldwide, accounting for 23% (1.38 million) of the total new cancer cases and 14% (458,400) of the total cancer deaths in 2008. About half the breast cancer cases and 60% of the deaths are estimated to occur in economically developing countries.<sup>4</sup> However, despite optimal local and systemic adjuvant treatment, 30–40% of patients diagnosed with curable breast cancer eventually die of recurrent disease.<sup>13</sup> Therefore, improved techniques to both detect and treat metastatic breast cancer are needed.

It was previously thought that metastasis occurred late in disease progression; however, evidence has shown that metastasis may be an early event. This is supported by the fact that CTCs are found in patients with early breast cancer. A recent study showed that dissemination of tumor cells can occur at a pre-invasive stage of the primary tumor and that the presence of CTCs was independent of tumor size in early human breast cancer.<sup>11</sup> However, even though occult tumor dissemination may occur early, not all patients with detectable CTCs will develop overt metastases. These CTCs may be in a state of dormancy and the exact mechanism of transition to overt metastases is unclear.<sup>14</sup>

For CTCs to be used as surrogates for metastasis, then accurate and reproducible techniques are needed for CTCs quantification. This is especially important when considering that CTCs concentration in peripheral blood can be as low as one per  $10^5$ – $10^7$  cells.<sup>15</sup> It is generally thought that molecular techniques are more sensitive than the immunohistochemical techniques (IHC), and that the implementation of such techniques has greatly improved the ability to detect low numbers of breast cancer cells. The detection rate of RT-PCR was greater than that of IHC and the test detected CTCs in samples that were shown to be negative by IHC. However, studies showed that the detection of tumor cells in both bone marrow and blood varied from equal sensitivities for IHC and RT-PCR to 10 times more sensitivity using RT-PCR rather than IHC. The difference in the sensitivity depended upon the particular tumor marker being assayed.<sup>16,17</sup>

Our study aimed to evaluate using the expression of Mammoglobin, a tumor-derived antigen and Mucin 1, a tumor-associated antigen, to detect CTCs in blood of breast cancer females as diagnostic and prognostic markers and predictors of metastasis. Mammoglobin is a 93-amino acid protein belonging to the uteroglobin/Clara cell protein family of small epithelial secretory proteins, the secretoglobins.<sup>18</sup> It is expressed in normal breast epithelial cells and is specifically over-expressed in breast cancer. Mammoglobin was reported to be present in more than 80% of breast cancer cases. Thus, hMAG is promising for its potential diagnostic value as well as its prognostic indications in breast cancer, especially as it can be detected almost exclusively in breast cancer.<sup>19,20</sup> The other

gene, Mucin-1, is a member of the mucin family and encodes a membrane bound, glycosylated phosphoprotein. It has a core protein mass of 120–225 kDa which increases to 250–500 kDa with glycosylation.<sup>21</sup> Mucin-1 was found to be over-expressed in more than 90% of breast cancers in an underglycosylated form, which makes it not only a candidate for being a diagnostic and prognostic marker of breast cancer cells, but also a target for immunotherapy.<sup>22</sup>

The study included a cohort of 50 females recently diagnosed with breast cancer; most of them were of high stage and high grade. CA 15.3 was elevated in a small proportion of cases (20%), while Mammoglobin and Mucin expression was observed in the majority of cases (80% and 86%; respectively). That reflects that CTCs detection in blood could be a much better diagnostic tool than the conventional tumor markers that are currently in use. In another study that was conducted to detect CTCs in patients of relatively higher stage breast cancer, their results were comparable to ours where they found that expression of CTC genes correctly identified 71% of the patients with invasive breast cancer, and 86% of the node-positive patients at presentation.<sup>23</sup> Furthermore, expression of CTC genes reflected the impact of surgery and of chemotherapy by the significant decrease in the percent of patients that are still positive, especially Mammoglobin expression.

There have been few studies regarding CTCs in early breast cancer. The reported CTC positivity rate has ranged from 9.4% to 48.6% depending on the method used and the patient group.<sup>24–29</sup> The positivity rates were so much lower than our study, most probably because they studied low-grade breast cancer patients, while the majority of patients in the current study were of high stage. Although CTCs dissemination in blood is supposed to be an early event in metastasis, its dissemination in primary breast cancer is not well studied. However, it might not be an early event, and is most probably correlated with tumor invasiveness or early metastasis. Also the method used for the detection and the gene whose expression is measured is another important factor.

Studies have tried to identify primary tumor characteristics that would predict the presence of CTCs. A recent study by Krishnamurthy et al. looked at CTCs in stage 1 and 2 breast cancer patients and found that the presence of CTCs was independent of lymph node status, tumor grade, tumor size, and receptor status.<sup>28</sup> This is in contrast with early findings of the SUCCESS trial, that reported a positive correlation between lymph nodes status and CTCs.<sup>29</sup> Our results were in agreement with those of Krishnamurthy et al., where Mammoglobin and Mucin-1 expressions before surgery were present in the majority of patients and did not correlate with any of the clinical parameters. That is probably because the tumor mass was still present and was seeding more tumor cells into the circulation. From model systems, it was estimated that about  $10^6$  tumor cells/g tumor tissues are shed daily into the blood, although such model calculations might overestimate the number actually shed in vivo.<sup>30,31</sup> Recent studies also showed that intraoperative shedding of tumor cells into the circulation may take place.<sup>32,33</sup> However, blood is only a temporary compartment for tumor cells, and a significant part of circulating tumor cells do not survive. It was reported that a large number of circulating tumor cells in patients with breast cancer are apoptotic and therefore might be unable to settle in secondary organs.<sup>34</sup> After surgery, when the tumor mass was removed, the presence of living tumor cells in the circulation was signif-

icantly correlated with tumor size, vascular invasion, stage and subsequent metastasis, but not with receptor status, grade and lymph node metastasis.

One goal of CTC detection is to correlate it to disease progression and response to treatment as a prognostic marker. Regarding CTCs prognostic role in breast cancer, the presence of Mucin-1 expression after surgery posed a doubled risk of metastasis in Mucin-1 positive than in negative patients, while after chemotherapy, the expression of either Mammoglobin or Mucin-1 posed a 1.8 relative risk of metastasis than in negative patients. This demonstrates that the presence of CTCs after surgery of after treatment with adjuvant chemotherapy could be associated with worse prognosis. This was further confirmed when considering DFS, where the same profile was noticed. Patients that were Mucin-1 positive after surgery had a significantly shorter disease free survival time compared to Mucin-1 negative patients, while after chemotherapy, patients who showed the expression of Mammoglobin or Mucin-1 had significantly shorter disease free survival time compared to negative patients (27.7 vs 38.9 months for Mammoglobin and 28.3 vs 38.6 months for Mucin-1).

Our results were consistent with most of the published data, though there is a great inconsistency regarding tumor response. Several studies involving early breast cancer patients have shown that the presence of CTCs is associated with a worse prognosis, early clinical relapse and disease-related death.<sup>27,35–38</sup> In other studies no significant correlation was found between CTC detection and the primary tumors response to neoadjuvant therapy and no correlation was found between CTC response and tumor response.<sup>24,39,40</sup> Though data is inconsistent regarding tumor response, most studies have found that the presence of CTCs does predict early relapse. The SUCCESS trial found that pretreatment CTC detection was associated with reduced disease-free survival as well as overall survival, while post treatment CTC detection was only associated with reduced disease-free survival.<sup>29</sup>

The prognostic accuracy for anticipating metastasis of CTCs detected in peripheral blood by the expression of Mammoglobin or Mucin-1 after 6 cycles of chemotherapy proved to be significant with AUCs = 0.667 and 0.649; respectively. However, due to the heterogenous nature of breast cancer, many reported that the simultaneous measurement of multiple markers significantly improved the prognostic accuracy of CTCs. Combining Mammoglobin and Mucin-1 expressions for CTC detection resulted in improved AUC becoming 0.71, however, the increase was not huge, it was significant.

It was not surprising that in the current study, CA 15.3 was not of any diagnostic or prognostic significance and did not correlate with any of the clinical parameters of the disease and could not predict metastasis. Currently, CA 15.3, which detects a soluble form of Mucin-1 protein, is the most widely used serum marker in patients with breast cancer. Its main use is for monitoring therapy in patients with metastatic disease. In this setting, CA 15.3 should not be used alone but in conjunction with diagnostic imaging, clinical history and physical examination.<sup>41</sup> It may also be used in the postoperative surveillance of asymptomatic women who have undergone surgery for invasive breast cancer. In this setting, serial determination can provide median lead-times of 5–6 months in the early detection of recurrent/metastatic breast cancer. It is unclear however, whether administering systemic therapy based on this



lead-time improves patient outcome. The main limitation of CA 15.3 as a marker for breast cancer is that serum levels are rarely increased in patients with early or localized disease. CA 15.3 increases in some cases only when metastasis has already happened, probably before clinical symptoms become visible, but as such it is not of any prognostic value in primary breast cancer.<sup>42,43</sup>

In conclusion, the data reported in the present study indicate that the hematogenous spread of tumor cells in patients with breast cancer may be an early phenomenon occurring before/apart from regional lymph nodes involvement. CTCs detection by RT-PCR could add to the initial evaluation of primary breast cancer patients. Also, adjuvant chemotherapy might eliminate or decrease occult tumor cells. But CTCs evaluation after adjuvant chemotherapy could predict metastasis and the presence of CTCs after chemotherapy reflect a higher potential for subsequent metastasis. As understanding of the biology of the breast cancer continues to improve, treatment of the disease continues to change, although the ultimate goal of the treatment remains improved survival, increasing emphasis is now put on less morbid treatments, and improves quality of life. Detection of the disease or metastasis remains our goal for achieving good control of the disease.

## References

- Howlander NNA, Krapcho M, Neyman N, Aminou R, Waldron W, et al. editors. SEER Cancer Statistics Review, 1975–2008. 2010, National Cancer Institute: Bethesda.
- Alexandria Cancer Registry, Medical Research Institute, Alexandria University, Egypt. 2007.
- Burstein HJ, Harris JR, Morrow M. Malignant tumors of the breast. In: DeVita VT, Lawrence TS, Rosenberg SA, editors. *Cancer: principles and practice of oncology*. 8th ed. Philadelphia: Lippincott Williams & Wilkins; 2008. p. 1606–54.
- Jemal A, Siegal R, Ward E, Hao Y, Xu J, Murray T. Cancer statistics. *CA Cancer J Clin* 2008;**58**:71–96.
- Fisher B, Jeong JH, Anderson S, Bryant J, Fisher ER, Wolmark N. Twenty-five-year follow-up of a randomized trial comparing radical mastectomy, total mastectomy, and total mastectomy followed by irradiation. *N Engl J Med* 2002;**347**:567–75.
- Ruoslahti E. How cancer spreads. *Sci Am* 1996;**275**:72–7.
- Chambers AF, Groom AC, MacDonald IC. Dissemination and growth of cancer cells in metastatic sites. *Nat Rev Cancer* 2002;**2**:563–72.
- Pantel K, Brakenhoff RH. Dissecting the metastatic cascade. *Nat Rev Cancer* 2004;**4**:448–56.
- Alix-Panabieres C, Muller V, Pantel K. Current status in human breast cancer micrometastasis. *Curr Opin Oncol* 2007;**19**:558–63.
- Dawood S, Cristofanilli M. Integrating circulating tumor cell assays into the management of breast cancer. *Curr Treat Options Oncol* 2007;**8**:89–95.
- Sainsbury R. Breast. In: Kirk RM, Winslet MC, editors. *General surgical operations*. 5th ed. Churchill Livingstone; 2006.
- Haskell CM. Breast cancer. In: Casciato DA, editor. *Manual of clinical oncology*. 6th ed. USA: Lippincott Williams and Wilkins; 2004.
- Weigelt B, Peterse JL, Van't Veer LJ. Breast cancer metastasis: markers and models. *Nat Rev Cancer* 2005;**5**:591–602.
- Graves H, Czerniecki BJ. Circulating tumor cells in breast cancer patients: an evolving role in patient prognosis and disease progression. *Pathol Res Int* 2011;**2011**:621090.
- Alunni-Fabbroni M, Sandri MT. Circulating tumour cells in clinical practice. Methods of detection and possible characterization. *Methods* 2010;**50**:289–97.
- Schoenfeld A, Kruger KH, Gomm J, Sinnott HD, Gazet JC, Sacks N, et al. The detection of micrometastases in the peripheral blood and bone marrow of patients with breast cancer using immunohistochemistry and reverse transcriptase polymerase chain reaction for keratin 19. *Eur J Cancer* 1997;**33**:854–61.
- López-Guerrero JA, Gilabert PB, González EB, Sanz Alonso JP, Pérez JP, Talens AS, et al. Use of reverse-transcriptase polymerase chain reaction (RT-PCR) for carcinoembryonic antigen, cytokeratin 19, and maspin in the detection of tumor cells in leukapheresis products from patients with breast cancer: comparison with immunocytochemistry. *J Hematother* 1999;**84**:53–61.
- Ni J, Kalff-Suske M, Gentz R, Schageman J, Beato M, Klug J. All human genes of the uteroglobin family are localized on chromosome 11 q 12.2 and form a dense cluster. *Ann New York Acad Sci* 2000;**923**:25–42.
- Span PN, Waanders E, Manders P, Heuvel JJ, Foekens JA, Watson MA, et al. Mammaglobin is associated with low-grade, steroid receptor-positive breast tumors from postmenopausal patients, and has independent prognostic value for relapse-free survival time. *J Clin Oncol* 2004;**22**:691–8.
- Zehentner BK, Carter D. Mammaglobin: a candidate diagnostic marker for breast cancer. *Clin Biochem* 2004;**37**:249–57.
- Hollingsworth MA, Swanson BJ. Mucins in cancer: protection and control of the cell surface. *Nat Rev Cancer* 2004;**4**:45–60.
- Singh R, Bandyopadhyay D. MUC1: a target molecule for cancer therapy. *Cancer Biol Ther* 2007;**6**:481–6.
- Reinholz MM, Nibbe A, Jonart LM, Kitzmann K, Suman VJ, Ingle JN, et al. Evaluation of a panel of tumor markers for molecular detection of circulating cancer cells in women with suspected breast cancer. *Clin Cancer Res* 2005;**11**:3722–32.
- Riethdorf S, Müller V, Zhang L, Rau T, Loibl S, Komor M, et al. Detection and HER2 expression of circulating tumor cells: prospective monitoring in breast cancer patients treated in the neoadjuvant Gepar-Quattro trial. *Clin Cancer Res* 2010;**16**:2634–45.
- Apostolaki S, Perraki M, Pallis A, Bozionelou V, Agelaki S, Kanellou P, et al. Circulating HER2 mRNA-positive cells in the peripheral blood of patients with stage I and II breast cancer after the administration of adjuvant chemotherapy: evaluation of their clinical relevance. *Ann Oncol* 2007;**18**:851–8.
- Bidard FC, Mathiot C, Delaloue S, Brain E, Giachetti S, de Cremoux P, et al. Single circulating tumor cell detection and overall survival in non metastatic breast cancer. *Ann Oncol* 2010;**21**:729–33.
- Ignatiadis M, Kallergi G, Ntoulia M, Perraki M, Apostolaki S, Kafousi M, et al. Prognostic value of the molecular detection of circulating tumor cells using a multimarker reverse transcription-PCR assay for cytokeratin 19, mammaglobin A, and HER2 in early breast cancer. *Clin Cancer Res* 2008;**14**:2593–600.
- Krishnamurthy S, Cristofanilli M, Singh B, Reuben J, Gao H, Cohen EN, et al. Detection of minimal residual disease in blood and bone marrow in early stage breast cancer. *Cancer* 2010;**116**:3330–7.
- Rack BK, Schindlbeck C, Andergassen U, Schneeweiss A, Zwingers T, Lichtenegger M, et al. Use of circulating tumor cells (CTC) in peripheral blood of breast cancer patients before and after adjuvant chemotherapy to predict risk for relapse: the SUCCESS trial. *J Clin Oncol* 2010;**18**:1003.
- Butler TP, Gullino PM. Quantitation of cell shedding into efferent blood of mammary adenocarcinoma. *Cancer Res* 1975;**35**:512–6.
- Chang YS, di Tomaso E, McDonald DM, Jones R, Jain RK, Munn LL. Mosaic blood vessels in tumors: frequency of cancer cells in contact with flowing blood. *Proc Natl Acad Sci USA* 2000;**97**:14608–13.
- Denis MG, Tessier M, Dreno B, Lustenberger P. Circulating micrometastases following oncological surgery. *Lancet* 1996;**347**:913.

33. Eschwège P, Dumas F, Blanchet P, Le Maire V, Benoit G, Jardin A, et al. Haematogenous dissemination of prostatic epithelial cells during radical prostatectomy. *Lancet* 1995;**346**:1528–30.
34. Méhes G, Witt A, Kubista E, Ambros PF. Circulating breast cancer cells are frequently apoptotic. *Am J Pathol* 2001;**159**:17–20.
35. Apostolaki S, Perraki M, Kallergi G, Kafousi M, Papadopoulos S, Kotsakis A, et al. Detection of occult HER2 mRNA-positive tumor cells in the peripheral blood of patients with operable breast cancer: evaluation of their prognostic relevance. *Breast Cancer Res Treat* 2009;**117**:525–34.
36. Wülfing P, Borchard J, Buerger H, Heidl S, Zänker KS, Kiesel L, et al. HER2-positive circulating tumor cells indicate poor clinical outcome in stage I to III breast cancer patients. *Clin Cancer Res* 2006;**12**:1715–20.
37. Xenidis N, Ignatiadis M, Apostolaki S, Perraki M, Kalbakis K, Agelaki S, et al. Cytokeratin-19 mRNA-positive circulating tumor cells after adjuvant chemotherapy in patients with early breast cancer. *J Clin Oncol* 2009;**27**:2177–84.
38. Ferro P, Franceschini MC, Bacigalupo B, Dessanti P, Falco E, Fontana V, et al. Detection of circulating tumour cells in breast cancer patients using human mammaglobin RT-PCR: association with clinical prognostic factors. *Anticancer Res* 2010;**30**:2377–82.
39. Ignatiadis M, Xenidis N, Perraki M, Apostolaki S, Politaki E, Kafousi M, et al. Different prognostic value of cytokeratin-19 mRNA positive circulating tumor cells according to estrogen receptor and HER2 status in early-stage breast cancer. *J Clin Oncol* 2007;**25**:5194–202.
40. Pierga JY, Bidard FC, Mathiot C, Brain E, Delaloge S, Giachetti S, et al. Circulating tumor cell detection predicts early metastatic relapse after neoadjuvant chemotherapy in large operable and locally advanced breast cancer in a phase II randomized trial. *Clin Cancer Res* 2008;**14**:7004–10.
41. Duffy MJ. Serum tumor markers in breast cancer: are they of clinical value? *Clin Chem* 2006;**52**:345–51.
42. Duffy MJ, Evoy D, McDermott EW. CA 15-3: uses and limitation as a biomarker for breast cancer. *Clin Chim Acta* 2010;**411**:1869–74.
43. Molina R, Barak V, van Dalen A, Duffy MJ, Einarsson R, Gion M, et al. Tumor markers in breast cancer—European Group on Tumor Markers recommendations. *Tumour Biol* 2005;**26**:281–93.