



# Serum IL 6 and umbilical artery Doppler indices in pre-eclamptic patients<sup>☆</sup>



Medhat Y. Anwer<sup>a</sup>, Tark A. Karkor<sup>a</sup>, Sally S. El-Tawab<sup>a,\*</sup>,  
Akram A. Deghady<sup>b</sup>, Ihab M. El Tayeb<sup>a</sup>

<sup>a</sup> *Obstetrics and Gynecology Department, Shatby Maternity, University Hospital, Faculty of Medicine, Alexandria University, Alexandria, Egypt*

<sup>b</sup> *Clinical and Chemical Pathology Department, Faculty of Medicine, Alexandria University, Alexandria, Egypt*

Received 3 September 2015; revised 26 January 2016; accepted 17 February 2016  
Available online 7 March 2016

## KEYWORDS

INTERLEUKIN 6;  
Umbilical artery Doppler;  
Pre-eclampsia

**Abstract** *Objectives:* To study the changes in serum IL 6 levels in pre-eclamptic patients and to detect any correlation between these changes and changes in the umbilical artery Doppler velocimetry.

*Methods:* In Shatby Hospital, 100 pregnant women, at or beyond 32 weeks were selected and divided into three groups: group A with severe pre-eclampsia, group B with mild pre-eclampsia, and group C with normal pregnancy as control. Measurement of maternal serum IL 6 using ELISA and umbilical artery Doppler velocimetry was done. Kruskal–Wallis, Mann–Whitney U tests, and Spearman's rank correlation tests were used.

*Results:* A statistical significant difference ( $p < 0.001$ ) was found regarding serum IL-6 level. Using ROC curve for IL 6 levels, it is suggested that IL 6 of 0.82 ng/dl is a cutoff level to early diagnose mild pre-eclampsia (with sensitivity 87.5% and specificity 100%). A statistical significant correlation was found between maternal serum IL 6 levels and S/D ratio and RI in severe pre-eclamptic group ( $p < 0.05$ ).

*Conclusion:* Maternal serum IL 6  $> 0.82$  ng/dl can be implicated as an early laboratory diagnosis of mild pre-eclampsia. The significant correlation between maternal serum IL 6 levels and Doppler velocimetry supports both the immunologic and the systemic endothelial dysfunction theories of pre-eclampsia.

© 2016 Alexandria University Faculty of Medicine. Production and hosting by Elsevier B.V. This is an open access article under the CC BY-NC-ND license (<http://creativecommons.org/licenses/by-nc-nd/4.0/>).

<sup>☆</sup> The research protocol was approved by our institutional Ethics Committee before the study began. A Written informed consent for participation in the study was taken from all recruited women.

\* Corresponding author at: Shatby Maternity University Hospital, Port Said Street, El Shatby, Egypt.

E-mail address: [sally\\_eltawab@hotmail.com](mailto:sally_eltawab@hotmail.com) (S.S. El-Tawab).

Peer review under responsibility of Alexandria University Faculty of Medicine.

## 1. Introduction

Pre-eclampsia is a systemic disorder unique to pregnancy occurring in 4–8% of pregnant women. It is characterized by new onset of hypertension and proteinuria after 20 weeks of gestation.<sup>1</sup> There is widespread belief that reduced uteroplacental perfusion is the central pathophysiologic process

involved in the development of preeclampsia. This reduced perfusion results from shallow trophoblast invasion with incomplete endovascular alteration, thereby inhibiting essential morphological changes of the maternal uterine vasculature needed to reform the spiral arterioles into low-resistance vessels.<sup>2,3</sup> This inadequate trophoblast invasion may result from decreased expression of human leukocyte antigen-G (HLA-G) leading to an abnormal interaction with decidual natural killer (NK) cells, which are believed to play a major role in these processes through the production of immunoregulatory cytokines and angiogenic factors. More recently, the theory of deficient trophoblastic invasion has been disputed on the basis of evidence that failure to remodel the uterine arteries is also associated with intra-uterine growth restriction, where no signs of hypertension and proteinuria are observed.<sup>4</sup> Two theories have highlighted the “excessive inflammation” and the angiogenic imbalance” theories as the cause of pre-eclampsia.<sup>5</sup> Evidence of inflammation theory includes elevated inflammatory cytokines and uncontrolled increased activation of the complement system.<sup>6</sup> Macrophages, neutrophils, and T lymphocytes of the T helper (Th-1) subset are the predominant cell types mediating the inflammatory cascade in pre-eclamptic women. Pro-inflammatory cytokines such as IL-6 and TNF alpha interact with important blood pressure regulatory systems such as the renin-angiotensin system, sympathetic nervous system and endothelial factors.<sup>7</sup> IL-6 is a pro-inflammatory cytokine produced by mononuclear phagocytes, endothelial cells, fibroblasts and T cells, expressed in the reproductive tract and gestational tissues and exerts regulatory functions in embryo implantation and placental development, as well as the immune adaptations required to tolerate pregnancy.<sup>8,9</sup>

IL-6 may increase the permeability of endothelial cells by changing the cell shape and rearrangement of intracellular actin fibers.<sup>10</sup> The quantitative importance of the renin-angiotensin system in mediating the effects of IL-6 during pregnancy is unknown and remains to be an important area of investigation.

Doppler velocimetric parameters have become established as the cornerstone mechanism to examine RI, PI, and S/D ratio of the maternal-fetal circulation. Women developing pre-eclampsia have significantly altered velocimetric parameters, indicative of high vascular RI, compared with women with normal uterine perfusion.<sup>11</sup>

### 1.1. Objectives

The objectives were to study the changes in serum IL 6 levels in pre-eclamptic patients of different severity and to detect any correlation between the changes in the maternal serum IL 6 levels and changes in the umbilical artery Doppler velocimetry in pre-eclamptic patients.

### 1.2. Methods

100 pregnant women, at or beyond 32 weeks of gestation (32–40 weeks) were selected from the out-patient ante-natal clinic and from the inpatient pre-eclamptic unit in Shatby Maternity University Hospital. Pre-eclampsia was diagnosed according to the American college of Obstetricians and Gynecologists in its last version, de novo arterial hypertension, after 20th

week of gestation, with systolic blood pressure > 140 mmHg or diastolic blood pressure > 90 mmHg, in two separate measurements, at least 4 h apart. Blood pressure was measured with the pressure cuff placed on the left arm at the heart level in sitting position. In addition, the presence of proteinuria of more than 300 mg/L in a random sample is the other essential finding to fulfill the diagnosis.

### 1.3. Exclusion criteria

Multiple pregnancy, pregnancy complicated with diabetes mellitus or thyrotoxicosis or pyelonephritis, hypertension diagnosed before 20th week of gestation have been excluded. Patients with chronic inflammatory diseases (e.g. systemic lupus erythromatosis, rheumatoid arthritis, inflammatory bowel disease) or with acute inflammatory diseases (e.g. tonsillitis, urinary tract infections) and pregnancy before 32 weeks of gestation, have been excluded.

The research protocol was approved by our institutional Ethics Committee before the study began. A Written informed consent for participation in the study was taken from all recruited women.

Patients were divided into three groups: group A (40 patients) with severe pre-eclampsia, group B (40 patients) with mild pre-eclampsia, and group C (20 pregnant women) with normal pregnancy as control.

Blood samples were taken from all included women for testing serum IL-6 levels. Umbilical artery Doppler velocimetry was done to all cases to measure S/D ratio, Pulsatility index PI, and Resistance index RI.

### 1.4. Sample collection and biochemical analysis

Blood samples were drawn from an ante-cubital vein into EDTA tubes in all patients. All collected blood samples were immediately centrifuged at 4000 rpm and +4 °C for 10 min and then the collected sera were transferred to Eppendorf tubes and kept at –70 °C until they were analyzed. IL-6 levels were determined using Enzyme-linked immunosorbent Assay ELISA according to the manufacturer’s instructions. Intra and inter assay coefficients of variation ranged from 3% to 7%.

### 1.5. Statistical analysis

Mean and standard deviation were used to describe numerical variables. Kolmogorov–Smirnov test was used to evaluate the distribution pattern of the data. Kruskal–Wallis test was used for comparison between 3 groups. Mann–Whitney U test was used for comparison between two groups.

The ability of IL-6 concentrations to discriminate between pre-eclamptic and non-pre-eclamptic pregnancies was quantified by using the area under the receiver operating characteristic (ROC) curve. This area is a suitable measure to summarize the discriminative power of a value and can range from 0.5 (no discrimination) to 1.0 (perfect discrimination). A value of 0.7–0.8 is considered to represent reasonable discrimination, and a value of > 0.8 is good discrimination. When the ROC curve is plotted with 1-specificity on the abscissa and the corresponding values for sensitivity on the ordinate the point of the ROC curve closest to the upper left corner of the coordinate system

(where sensitivity and specificity equal 1) represents the best cutoff value. Spearman's rank correlation tests were used for the correlation between serum levels of IL-6 and umbilical artery Doppler indices. Statistical software program SPSS was used.

**2. Results**

No statistical significant difference was found between the three groups as regards age, BMI, gravidity and parity.

Regarding serum level IL-6, it was higher in group A (severe pre-eclampsia), than group B (mild pre-eclampsia) and group C (control group) with statistical significant difference. It was statistically significantly higher in group B than group C as in Table 1.

On comparing the RI in the three groups, there was statistical significance difference between severe pre-eclampsia (Group A) and both mild pre-eclampsia (Group B) and control group (Group C). The mean was  $0.59 \pm 0.05$  in control group,  $0.7 \pm 0.05$  in group B and  $0.81 \pm 0.04$ , as in Table 2.

On comparing between the changes in maternal serum IL 6 levels and umbilical artery Doppler indices in the three groups,

there was a statistical significant correlation between (IL 6 and S/D ratio) and (IL6 and RI) in group A (severe pre-eclampsia). No statistical significance relation was found between IL6 and RI, PI, S/D in both mild pre-eclampsia group B and control group C as in Table 3, and Fig. 1 presents the correlation between IL6 and RI.

The ability of IL-6 concentrations to discriminate between pre-eclamptic and non-pre-eclamptic pregnancies was quantified by using the area under the receiver operating characteristic (ROC) curve. The study concluded a cutoff level of  $>0.82$  ng/dl to early diagnose pre-eclampsia, with a sensitivity of 87.5%, 100% specificity, 90% accuracy, 100% positive predictive value and 66.67% negative predictive value (Table 4 and Fig. 2).

**3. Discussion**

The exact pathophysiological events leading to the development of pre-eclampsia are unknown. It seems that abnormal activation of the immune system plays a vital role in the etiology of this systemic disorder. Inflammatory cytokines are known to be potent activators of the vascular endothelium and proposed

**Table 1** Comparison between the different studied groups according to serum IL6.

	Control (Group C)	Mild PET (Group B)	Severe PET (Group A)	<sup>KW</sup> <i>p</i>
IL 6				
Range	0.62–0.82	0.75–1.18	1.43–1.79	$< 0.001^*$
Mean ± SD	$0.71 \pm 0.06$	$0.97 \pm 0.14$	$1.67 \pm 0.09$	
Median	0.72	0.97	1.69	
<i>p</i> <sub>1</sub>		<sup>MW</sup> <i>p</i> < 0.001*	<sup>MW</sup> <i>p</i> < 0.001*	
<i>p</i> <sub>2</sub>			<sup>MW</sup> <i>p</i> < 0.001*	

*p*<sub>1</sub>: *p* value between control and each other group.

*p*<sub>2</sub>: *p* value between Mild PET and severe PET group.

<sup>KW</sup>*p*: *p* value for Kruskal Wallis test between the three studied groups.

<sup>MW</sup>*p*: *p* value for Mann–Whitney U test.

\* Statistically significant at  $p \leq 0.05$ .

**Table 2** Comparison between the different studied groups according to RI and PI.

	Control	Mild PET	Severe PET	Test of sig
RI				
Range	0.52–0.66	0.62–0.82	0.73–0.86	$p < 0.001^*$
Mean ± SD	$0.59 \pm 0.05$	$0.70 \pm 0.05$	$0.81 \pm 0.04$	
Median	0.58	0.69	0.82	
<i>p</i> <sub>1</sub>		<sup>LSD</sup> <i>p</i> < 0.001*	<sup>LSD</sup> <i>p</i> < 0.001*	
<i>p</i> <sub>2</sub>			<sup>LSD</sup> <i>p</i> < 0.001*	
PI				
Range	0.74–1.17	0.74–1.67	1.54–1.99	<sup>KW</sup> <i>p</i> < 0.001*
Mean ± SD	$0.94 \pm 0.16$	$1.04 \pm 0.22$	$1.78 \pm 0.13$	
Median	0.93	0.98	1.80	
<i>p</i> <sub>1</sub>		<sup>MW</sup> <i>p</i> = 0.065	<sup>MW</sup> <i>p</i> < 0.001*	
<i>p</i> <sub>2</sub>			<sup>MW</sup> <i>p</i> < 0.001*	

*p*<sub>1</sub>: *p* value between control and each other group.

*p*<sub>2</sub>: *p* value between Mild PET and severe PET group.

*p*: *p* value for test (ANOVA).

<sup>LSD</sup>*p*: *p* value of Post Hoc test (LSD).

<sup>KW</sup>*p*: *p* value for Kruskal Wallis test between the three studied groups.

<sup>MW</sup>*p*: *p* value for Mann–Whitney U test.

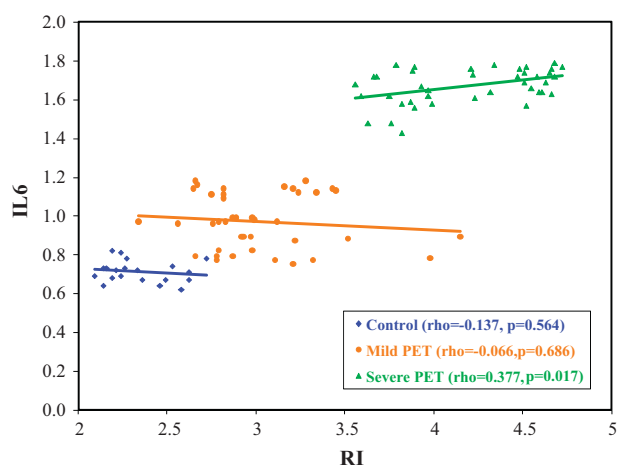
\* Statistically significant at  $p \leq 0.05$ .

**Table 3** Correlation between IL6, PI, S/D ratio and RI in the three studied groups.

		IL6		
		Control	Mild PET	Severe PET
PI	Rho	-0.416	-0.081	0.264
	<i>p</i>	0.068	0.619	0.100
S/D ratio	Rho	-0.137	-0.066	0.377*
	<i>p</i>	0.564	0.686	0.017
RI*	<i>r</i>	-0.133	-0.085	0.346*
	<i>p</i>	0.577	0.601	0.029

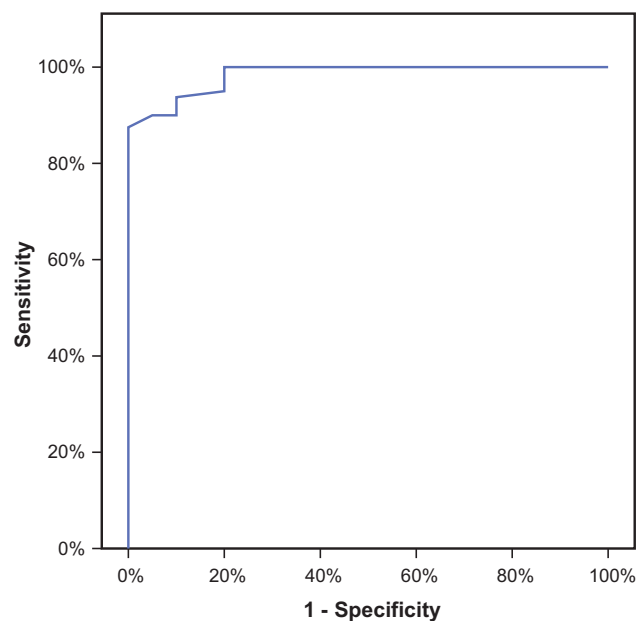
rho ( $\rho$ ): Spearman coefficient.*r*: Pearson coefficient.

RI\*: The correlation was done after logarithmic normalization of IL6.

\* Statistically significant at  $p \leq 0.05$ .**Figure 1** Correlation between IL6 and RI in the three studied groups.

to be mediators of the widespread endothelial dysfunction.<sup>12</sup> Little is known about the relationship between the severity of inflammation and the severity of pre-eclampsia due to insufficient reports investigating this matter.<sup>13,14</sup>

In our study, serum IL 6 levels were higher in women with pre-eclampsia (mild and severe) than control group (normotensive) and were higher in severe pre-eclamptic patients than in mild pre-eclamptic patients. In a review of the current literature, conflicting results are found. Many studies, match with our results, showing IL-6 level significantly higher in pre-eclamptic patients versus control.<sup>15-19</sup> On the other hand, other studies didn't manage to identify increased maternal serum level of IL 6 in pre-eclamptic patients.<sup>20-22</sup> Moreover, some studies<sup>23,24</sup> show contradictory results. For example, a

**Figure 2** ROC curve for IL6.

study by Wang et al.,<sup>23</sup> demonstrated elevated maternal soluble group sgp130 and IL-6 levels and reduced sgp130 and SOCS-3 expression in women complicated with pre-eclampsia, and another in vitro study by Zhao et al.,<sup>24</sup> in which soluble IL-6 receptor and sgp 130 production under hypoxic effect by placentae were determined by immunohistochemical staining and western blot, stated that IL-6 production was significantly reduced by both normal and pre-eclamptic placental tissue.

Among the given explanations of the literature variation in IL-6 levels among pre-eclamptic women was the presence of underlying maternal infections, stating that a significant subset of cases of preeclampsia is associated with underlying maternal infections that are a source of these proinflammatory cytokines.<sup>25</sup> In our study, any women with chronic or acute inflammatory disease was excluded from the study. Also, difference in gestational age was another explanation. In our study, all phlebotomies were performed at or beyond 32 weeks of gestation. Another given explanation was the difference in the value of inter-assay coefficient of variation.

The variation in the literature is not only limited to the raise, decrease or equality of IL-6 levels among pre-eclamptic and non-pre-eclamptic women as mentioned before, and it extends to involve the actual levels estimated in the different studies. In a study by Olusi et al.,<sup>26</sup> estimated IL-6 was  $60.0 \pm 13.7$  pg/ml and  $158.0 \pm 35.4$  pg/ml in pre-eclampsia and normal pregnancy respectively (equivalent to  $6.0 \pm 1.37$  ng/dl and  $15.8 \pm 3.54$  ng/dl). In another study, the values were 55.7 ng/dl and 44.3 ng/dl in pre-eclamptic and normal pregnancy respectively.<sup>27</sup> In a third study,<sup>23</sup> IL-6 was 12.57

**Table 4** Agreement (sensitivity, specificity and accuracy) for IL6.

		Control	Cases	Sensitivity	Specificity	PPV	NPV	Accuracy
IL6	$\leq 0.82$	20	10	87.50	100.0	100.0	66.67	90.0
	$> 0.82$	0	70					

$\pm 2.78$  pg/ml and  $4.44 \pm 1.19$  pg/ml in pre-eclamptic and normal pregnancy respectively (equivalent to  $1.25 \pm 0.27$  ng/dl and  $0.44 \pm 0.11$  ng/dl) in pregnant women beyond 34 weeks of gestation. These values are near to those found in this study.

Although, through statistical analysis of our results using ROC curve, a cutoff level of  $>0.82$  ng/dl was elicited as a discrimination between normal women and those with pre-eclampsia, the result can't be generalized due to the wide variations elicited before. Whether the gestational age, the value of inter-assay coefficient of variation, or the different racial background of the participant women involved in the different carried studies, further global studies are needed to clarify this point.

The second objective of our study was to correlate between the IL-6 level as a marker of inflammation and the severity of pre-eclampsia using umbilical artery Doppler indices, aiming to determine the clinical utility of IL-6 measurement in clinical practice. A significant correlation was found between (IL-6 and S/D) and (IL-6 and RI) in women with severe pre-eclampsia. This study was carried on women with the established pre-eclampsia and it is not possible to determine whether the increased concentrations of IL-6 was a cause or consequence of the disease. But, an in vitro study<sup>28</sup> concluded that augmented expression of decidual IL-6 may play a causative role in the pathogenesis of pre-eclampsia acting as a key source of circulating factor, as the locally elevated expression promotes excessive decidual macrophages implicated in shallow extra-villous trophoblast invasion of the decidua.

#### 4. Conclusion

Until now, women with pre-eclampsia are evaluated according to the clinical findings. But, we should consider that women with clinically mild pre-eclampsia may turn into severe disease.<sup>29</sup> Currently, there was not a standardized effective method to determine this risk. IL-6 may be a successful marker for this issue, and the detection of a cutoff level in our study may be a starting point for further prospective studies, in which serial measurement of IL-6 is done for women who progress into pre-eclampsia of varying severity. But still, more global studies to standardize the values are needed. The significant correlation between maternal serum IL 6 levels and Doppler velocimetry, in this study, supports both the immunologic and the systemic endothelial dysfunction theories of pre-eclampsia.

#### Conflict of interest

Authors do not present any potential conflict of interest.

#### References

- Roberts JM, Gammil HS. Pre-eclampsia: recent insights. *Hypertension* 2005;**46**:1243–9.
- Poston L. Endothelial dysfunction in pre-eclampsia. *Pharmacol Rep* 2006;**58**(suppl):69–74.
- Freeman DJ, Mc Manus F, Brown EA, et al. Short-and long-term changes in plasma inflammatory markers associated with pre-eclampsia. *Hypertension* 2004;**44**:708–14.
- Ayuk PT, Matijevic R. Placental ischemia is a consequence rather than a cause of pre-eclampsia. *Med Hypothesis* 2006;**67**:792–5.
- Ramma W, Ahmed A. Is inflammation the cause of pre-eclampsia? *Biochem Soc Trans* 2011;**39**:1619–27.
- Holthe MR, Stalt AC, Berge LN, Lyberg T. Leukocyte adhesion molecules and reactive oxygen species in pre-eclampsia. *Obstet Gynecol* 2004;**103**:913–22.
- Ruiz-ortega M, Ruperez M, Lorenzo H, et al. Angiotensin II regulates the synthesis of proinflammatory cytokines and chemokines in the kidney. *Kidney Int* 2008;**82**:12–22.
- Akira S, Tanga T, Kishimoto T. Interleukin-6 in biology and medicine. *Adv Immunol* 1993;**54**:1–78.
- Prins JR, Gomez-Lopez N, Robertson SA. Interleukin-6 in pregnancy and gestational disorders. *J Reprod Immunol* 2012;**95**(1–2):1–14.
- Maruo N, Morita I, Shirao M, Murota S. IL-6 increases endothelial permeability in vitro. *Endocrinology* 1992;**131**:710–4.
- Leik C, Walsh SW. Neutrophils infiltrate resistance-sized vessels of subcutaneous fat in women with pre-eclampsia. *Hypertension* 2004;**44**:72–7.
- Schobel HP, Grassi G. Hypertensive disorders of pregnancy: a dysregulation of the sympathetic nervous system. *Hypertension* 2008 May;**16**:569–70.
- Ustun Y, Engin-Ustun Y, Kamci M. Association of fibrinogen and C- reactive protein with severity of pre-eclampsia. *Eur J Obstet Gynecol Reprod Biol* 2005;**121**:154–8.
- Ellis J, Wennerholm UB, Bengtsson A, Lilia H, Pettersson A, Sultan B, et al. Levels of dimethylarginines and cytokines in mild and severe pre- eclampsia. *Acta Obstet Gynecol Scand* 2001;**80**:602–8.
- Xie C, Yao MZ, Liu JB, Xiong LK. A meta-analysis of tumor necrosis factor-alpha, interleukin-6 and interleukin-10 in pre-eclampsia. *Cytokine* 2011;**56**(3):550–9.
- Güven MA, Coskun A, Ertas IE, Aral M, Zencirci B, Oksuz H. Association of maternal serum CRP, IL-6, TNF-alpha, homocysteine, folic acid and vitamin B 12 levels with the severity of pre-eclampsia and fetal birth weight. *Hypertens Pregnancy* 2009;**28**(2):190–200.
- Kalinderi M, Papanikolaou A, Kalinderi K, Loannidou E, Giannoulis C, Karaqiannis V, et al. Elevated serum levels of interleukin-6, interleukin-1 $\beta$  and human chorionic gonadotropin in pre-eclampsia. *Am J Reprod Immunol* 2011;**66**(6):468–75.
- Teran E, Escudero C, Moya W, Flores M, Vallance P, Lopez-Jaramillo P. Elevated C-reactive protein and pro-inflammatory cytokines in Andean women with pre-eclampsia. *Int J Gynecol Obstet* 2001;**75**(3):243–9.
- Sharma A, Satyam A, Sharma JB. Leptin, IL-10 and inflammatory markers (TNF-alpha, IL-6 and IL-8) in pre-eclamptic, normotensive pregnant and healthy non-pregnant women. *Am J Reprod Immunol* 2007;**58**(1):21–30.
- Kucuk M, Sezer SD, Yenisey C, Yuksel H, Odabasi AR. Comparison of interleukin-6 levels in maternal and umbilical cord blood in early and late onset pre-eclampsia. *Gynecol Endocrinol* 2012 Aug;**28**(8):640–3.
- Borekci B, Aksoy H, Al RA, Demircan B, Kadanali S. Maternal serum interleukin-10, interleukin-2 and interleukin-6 in pre-eclampsia and eclampsia. *Am J Reprod Immunol* 2007;**58**(1):56–64.
- Vitoratos N, Economou E, Lavazzo C, Panoulis K, Creatsas G. Maternal serum levels of TNF-alpha and IL-6 long after delivery in pre-eclampsia and normotensive pregnant women. *Mediators Inflamm* 2010;**2010**:908649.
- Wang Y, Lewis DF, Gu Y, Zhao S, Groome LJ. Elevated Maternal soluble Gp130 and IL-6 levels and reduced Gp130 and SOCS-3 expressions in women complicated with pre-eclampsia. *Hypertension* 2011;**57**(2):336–42.
- Zhao S, Gu Y, Dong Q, Fan R, Wang Y. Altered interleukin-6 receptor, IL-6R and gp130, production and expression and decreased SOCS-3-expression in placentas from women with pre-eclampsia. *Placenta* 2008;**29**(12):1024–8.

25. Sibai BM, Dekker G, Kupferminic M. Pre-eclampsia. *Lancet* 2005;**365**:785–99.
26. Olusi SO, Diejomaoh M, Omu A, Abdulaziz A, Prabha K, George S. Interleukins in pre-eclampsia. *Ann Saudi Med* 2000;**20**(1):4–7.
27. Ozler A, Turgut A, SAK ME, Evsen MS, Soydinc HE, Evliyaoglu O, et al. Serum levels of neopterin, tumor necrosis factor-alpha and interleukin-6 in pre-eclampsia: relationship with disease severity. *Eur Rev Med Pharmacol Sci* 2012;**16**:1707–12.
28. Lockwood CJ, Yen CF, Basar M, Kayisli U, Martel M, Irina B, et al. Preeclampsia-related inflammatory cytokines regulate interleukin-6 expression in human decidual cells. *Am J Pathol* 2008;**172**(6):1571–9.
29. Habli M, Eftekhari N, Wiebracht E, Bombrys A, Khabbaz M, How H, et al. Long-term maternal and subsequent pregnancy outcomes 5 years after hemolysis, elevated liver enzymes and low platelets (HELLP) syndrome. *Am J Obstet Gynecol* 2009;**385**:e1–5.