



## *In vitro* antimetastatic activity of Agarwood (*Aquilaria crassna*) essential oils against pancreatic cancer cells



Saad Sabbar Dahham <sup>a,\*</sup>, Yasser M. Tabana <sup>a</sup>, Loiy E. Ahmed Hassan <sup>a</sup>,  
Mohamed B. Khadeer Ahamed <sup>a</sup>, Aman Shah Abdul Majid <sup>b</sup>,  
Amin Malik Shah Abdul Majid <sup>a,\*</sup>

<sup>a</sup> EMAN Research and Testing Laboratory, School of Pharmaceutical Sciences, Universiti Sains Malaysia, Penang 11800, Malaysia

<sup>b</sup> Advanced Medical and Dental Institute (IPPT), Universiti Sains Malaysia, Penang, Malaysia

Received 28 April 2015; accepted 7 July 2015  
Available online 29 July 2015

### KEYWORDS

Essential oils;  
Agarwood;  
*Aquilaria crassna*;  
Pancreatic cancer

**Abstract** *Background:* Pancreatic cancer is one of the most lethal malignant tumors which remains a rampant killer across the globe. Lack of early diagnosis and toxic drugs have failed to improve the survival rate of pancreatic cancer patients, thus new agents that are safe, available and effective are urgently needed.

*Objective:* The study aimed to investigate the efficacy of Agarwood essential oils in the inhibition of metastasis and induction of apoptosis in the pancreatic cell line (MIA PaCa-2).

*Methods:* Essential oils of *Aquilaria crassna* were obtained by hydrodistillation. Chemical characterization was analyzed using FTIR and GCMS. The effects of essential oils against three steps of metastases have been investigated, including cell proliferation, migration and clonogenicity. Hoechst and rhodamine assays confirmed the mechanism of pancreatic cancer cell death.

*Results:* The results showed that essential oils exhibited potent cytotoxic activity against MIA PaCa-2 cells with an  $IC_{50}$  ( $11 \pm 2.18 \mu\text{g/ml}$ ). Cell migration was effectively inhibited at ( $10 \mu\text{g/ml}$ ). Moreover, at a sub-toxic dose ( $5 \mu\text{g/mL}$ ), essential oils obstructed the colony formation properties of MIA PaCa-2 significantly. The mechanism of cell death was determined due to the

\* Corresponding authors. Tel.: +60 176988685 (S.S. Dahham). Tel.: +60 124240842; fax: +60 4 641 0295 (A.M.S. Abdul Majid).

E-mail addresses: [hawk\\_dijla@yahoo.com](mailto:hawk_dijla@yahoo.com) (S.S. Dahham), [aminmalikshah@gmail.com](mailto:aminmalikshah@gmail.com) (A.M.S. Abdul Majid).

Peer review under responsibility of Alexandria University Faculty of Medicine.

<http://dx.doi.org/10.1016/j.ajme.2015.07.001>

2090-5068 © 2015 The Authors. Alexandria University Faculty of Medicine. Production and hosting by Elsevier B.V. This is an open access article under the CC BY-NC-ND license (<http://creativecommons.org/licenses/by-nc-nd/4.0/>).

induction of nuclear condensation and disruption of mitochondrial membrane potential in the cells. Interestingly, several active components were existed in the chemical profile of the essential oils extract such as  $\beta$ -Caryophyllene, 1-Phenanthrenecarboxylic acid, azulene, naphthalene and Cyclodecene.

**Conclusion:** The present study elucidated for the first time the anti-pancreatic cancer properties of *A. crassna* essential oils, It can be concluded that the anticancer effects of the extract could be due to the synergistic effect of the biologically active phytoconstituents present in the essential oils.

© 2015 The Authors. Alexandria University Faculty of Medicine. Production and hosting by Elsevier B.V. This is an open access article under the CC BY-NC-ND license (<http://creativecommons.org/licenses/by-nc-nd/4.0/>).

## 1. Introduction

Cancer is the general name for a heterogeneous group of more than 100 diseases which arises from dysregulation of the normal cellular mechanism, characterized by alterations in expression of multiple genes, leading to local tissue invasion and eventually metastasis.<sup>1</sup> Pancreatic cancer is one of the most aggressive malignant solid tumors which remains the fourth leading cause of cancer-related death with an overall 5-year survival rate of less than 5%. Recently, about 227,000 cases of deaths were reported annually worldwide.<sup>2,3</sup> Several risk factors have been implicated in this malignant disease including smoking, alcohol, diet, age and family history.<sup>4</sup> However, the most critical hurdle in the pancreatic cancer therapy is metastatic nature of the disease, where the malignant cells detach from the primary tumor location and grow in distant organs.<sup>5</sup> Clinical studies have estimated that only 10% of mortality is caused by the primary tumors, whereas metastasis alone contributes about 90% of cancer deaths.<sup>6</sup> Plants have been utilized for medicinal purposes since the early stage of civilizations. According to a botanical survey approximately there are 350,000 plants species that have been identified and recorded globally out of which, about 35,000–70,000 plants have been used for medicinal purposes and wonderingly, just 0.5% of it has been chemically studied and pharmacologically validated so far.<sup>7</sup> The World Health Organization (WHO) has estimated that 80% of population in the developing countries relies on traditional herbal medicine for the primary health care needs. In more recent times, phytochemicals such as paclitaxel, vincristine, and camptothecin have become major and significant sources for chemotherapy in cancer treatment protocols, which provided the most successful, alternative and complementary anticancer regimen<sup>8</sup>.

*Aquilaria crassna* (Thymelaeaceae) is an evergreen tree. It is an important traditional medicinal plant, used to treat various infectious ailments including inflammatory diseases. It has also been used by Arabs and Japanese to treat digestive and sedative disorders.<sup>9,10</sup> Extracts of *A. crassna* have revealed significant antioxidant and cytotoxic properties.<sup>11</sup> Moreover, different parts of *A. crassna* have been studied and explored dynamic biological effects such as antioxidant, anti-ischemic, antifungal, and antibacterial effects.<sup>12–15</sup> To the best of our knowledge, there is no report on essential oils (EOs) extracted from Agarwood used against human pancreatic cancer. In the present study anti-metastatic properties of EOs on highly invasive and metastatic pancreatic cancer cell line (MIA PaCa-2)

was evaluated. In addition, chemical profile of EOs of *A. crassna* was studied to identify the active principles present in the plant.

## 2. Materials and methods

### 2.1. Plants material and extraction of essential oils

Fresh sample of *A. crassna* stem bark was obtained from a local farm in Kajang, Selangor, Malaysia, in the year 2013. In addition, flowers and leaves with twigs were collected for taxonomical authentication and deposited at the School of Biological Sciences, USM (Ref. No. USM/122083). The bark of *A. crassna* was cleaned thoroughly, cut into small slices and ground mechanically. Ground material of the stem bark (500 g) was macerated with distilled water (5 L) at room temperature ( $25 \pm 2^\circ\text{C}$ ) for 1 week. Finally, hydrodistillation was employed on the extract for 48 h at boiling temperature of water. Essential oils (EOs) were obtained by Clevenger-type apparatus. The EOs were collected as pale-yellow liquid with 12.6 g yield.

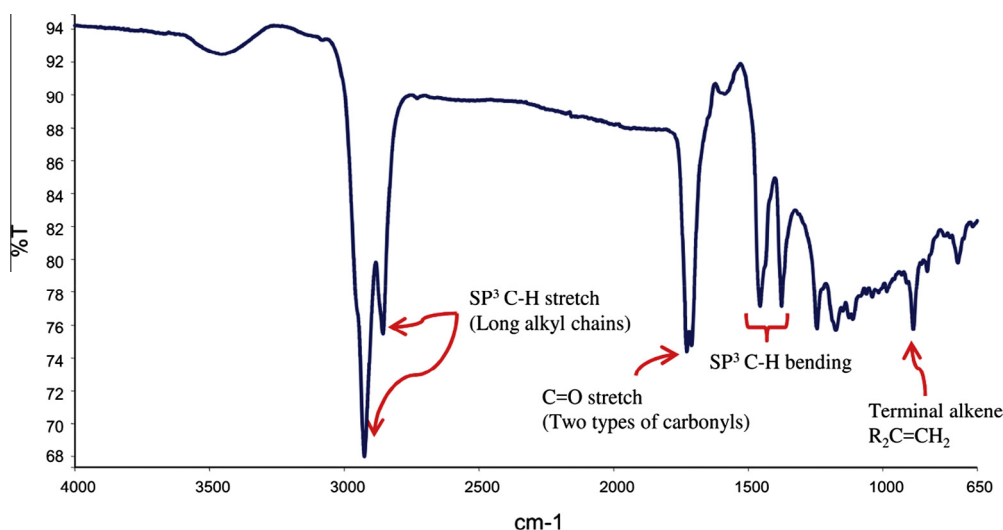
### 2.2. Characterization techniques

#### 2.2.1. FT-IR

The extracted contents were collected as thick yellowish to orange colored fluid so a thin layer method was used to collect FT-IR patterns. According to this method the contents were layered between thallium bromide disks. The disks were then exposed to IR radiations to collect the transmittance patterns<sup>16</sup>.

#### 2.2.2. Gas chromatography–mass (GC–MS) spectral analysis of the extract

Quantitative chemical analysis of *A. crassna* stem bark was carried out using GC–MS with an aim to identify the active compounds that might be responsible for the anti-pancreatic effect. The assay conditions were as follows: HP-5MS capillary column (30 m  $\times$  0.25 mm ID  $\times$  0.25  $\mu\text{m}$ , film thickness); held at  $70^\circ\text{C}$  for 2 min, raised to  $285^\circ\text{C}$  at a rate of  $20^\circ\text{C}/\text{min}$  and held for 20 min;  $285^\circ\text{C}$  for MSD transfer line heater; carrier helium at a flow rate of 1.2 mL/min; 2:1 split ratio. 1  $\mu\text{L}$  solution of SF-1 in chloroform (10 mg/mL) was injected automatically. Scan parameter low mass: 35 and higher mass: 550. The constituents were identified by comparison with standards using NIST 02. A total ion chromatogram (TIC) was used to compute the percentage of the identified constituents.



**Figure 1** FT-IR spectral features of the extract *A. crassna* stem bark depict the major chemical groups as the functional components of the bioactive phytoconstituents.

### 2.3. Chemicals and reagents

Dulbecco's Modified Eagle's medium (DMEM), trypsin, phosphate buffer saline (PBS) and heat inactivated fetal bovine serum (HIFBS) were purchased from Gibco, UK. Standard drug fluorouracil (5FU), 3-(4,5-dimethylthiazol-2-yl)-2-5-diphenyltetrazolium bromide (MTT) reagent, crystal violet, rhodamine 123, and Hoechst 33258 were purchased from Sigma-Aldrich, U.S.A.

### 2.4. Cell lines and culture conditions

Human pancreatic carcinoma cell line (MIA PaCa-2 ATCC<sup>®</sup> CRMCL1420<sup>™</sup>) was purchased from ATCC (Rockville, MD, U.S.A.). Cell line was grown at 37 °C and 5% CO<sub>2</sub> in sterile DMEM medium with 10% fetal bovine serum and 2.5% horse serum. Then, the cell was supplemented by 4 mM L-glutamine and penicillin-streptomycin.

### 2.5. Cell viability assay

Viability of the (MIA PaCa-2) was determined by MMT assay according to the method previously described.<sup>17</sup> Cells were seeded at  $1.5 \times 10^4$  cells in each well of 96-well plate in 100  $\mu$ L of fresh culture medium and were allowed to attach for overnight. For screening, the cells (70–80% confluency) were treated with the truffle extracts serial concentration (3.1–200  $\mu$ g/mL) to get the IC<sub>50</sub>. After 48 h of the treatment the medium was aspirated and the cells were exposed to MTT solution prepared at 5  $\mu$ g/mL in sterile PBS was added to each well at 10% v/v in the respective medium and was incubated at 37 °C in 5% CO<sub>2</sub> for 3 h. The water insoluble formazan salts was solubilized with 200  $\mu$ L DMSO/well. Absorbance was measured by infinite<sup>®</sup> Pro200 TECAN Group Ltd., (Switzerland) at primary wavelength of 570 nm and reference wavelength of 620 nm. Each plate contained the samples, negative control and blank. DMSO (1% v/v) was used as a negative control. 5-fluorouracil was used as

standard reference control. The assay was performed in triplicate and the results were presented the mean  $\pm$  SD.

### 2.6. Cell migration assay

The effect of essential oils extract on the migration of MIA PaCa-2 cells was studied by the wound healing assay as previously described.<sup>18</sup> MIA PaCa-2 cells were seeded separately in 6-well plate and incubated for 48 h to achieve almost 100% confluent monolayer. A straight scratch was created using a 200  $\mu$ L micropipette tip. The cells were washed with PBS and incubated in serum-reduced medium (2% FBS) containing Eos extract (5 and 10  $\mu$ g), control cell received 0.1% DMSO. The wound was photographed at zero, 12 and 24 h. The distance of cell-free area was measured using Leica Quin software, and the results are presented as average of percentage of inhibition of migration in comparison with the negative control ( $\pm$ SD,  $n = 6$ ). % inhibition of cell migration =  $[1 - (\text{the width at the indicated times}/\text{the width at zero time})] \times 100$

### 2.7. Colony formation assay

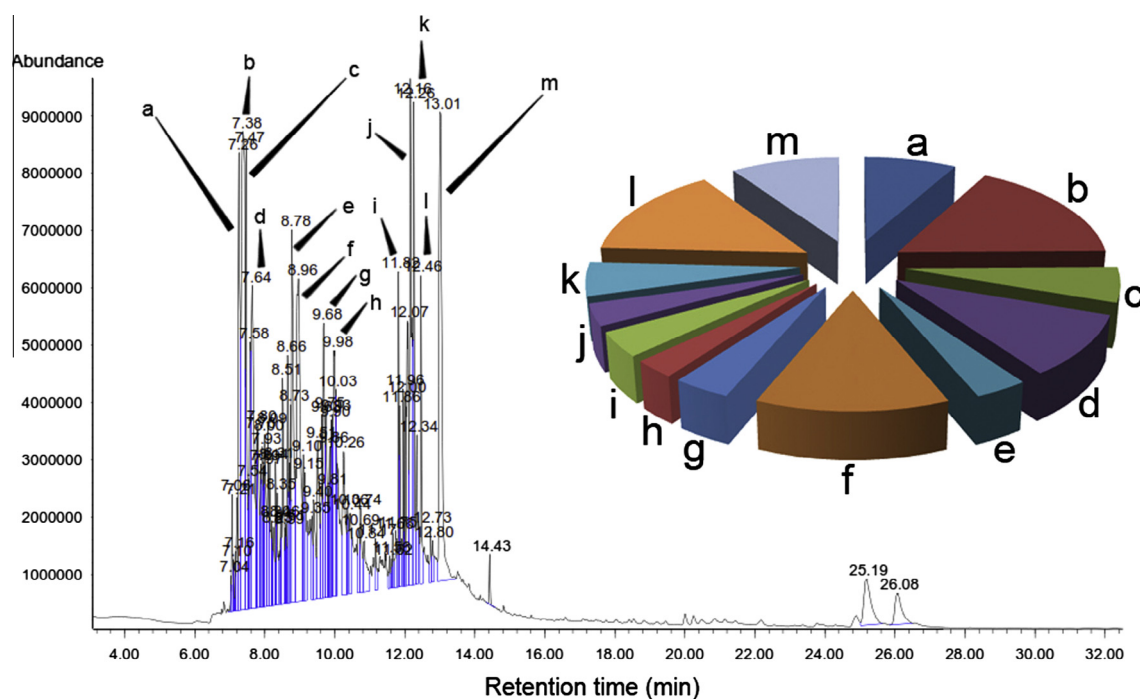
The effect of essential oils extract on MIA PaCa-2 cells was investigated by colony formation assay.<sup>19</sup> Briefly, the cells (500 cells/ml) were separately seeded in 6-well plate and incubated for 12 h. Subsequently, the cells were treated for 48 h with Eos extracts (5, 10 and 20  $\mu$ g/ml), or 5-fluorouracil (10  $\mu$ g) or 0.1% DMSO. The cells were maintained until sufficiently large colonies ( $\geq 50$  cells) were produced for 10 days. The colonies were fixed, stained with 0.2% crystal violet and counted under stereomicroscope. Percentage of plating efficiency (PE%) was calculated. The results are presented as the mean  $\pm$  SD ( $n = 3$ ).

### 2.8. Determination of nuclear condensation and mitochondrial membrane potential

MIA PaCa-2 cells ( $0.5 \times 10^6$  cells/mL) were cultured in 24-well plates. After cell attachment, then the cells were received new

**Table 1** GC–MS quantitative estimation of essential oils phytochemicals.

Peak	Ret time (min)	Area %	Phytoconstituents	Molecular formula	Molecular weight
a	7.26	3.925	Azulene	C <sub>15</sub> H <sub>24</sub>	204
b	7.38	8.111	β-Caryophyllene	C <sub>15</sub> H <sub>24</sub>	204
c	7.47	2.694	Naphthalene	C <sub>15</sub> H <sub>24</sub>	204
d	7.64	4.755	α-Caryophyllene	C <sub>15</sub> H <sub>24</sub>	204
e	8.78	1.72	Caryophyllene oxide	C <sub>15</sub> H <sub>24</sub> O	220
f	8.96	6.193	2-Naphthalenemethanol	C <sub>15</sub> H <sub>26</sub> O	222
g	9.68	1.866	2,5-Pyrrolidinedione	C <sub>11</sub> H <sub>11</sub> NO <sub>2</sub>	189
h	9.98	1.377	Cyclohexanone	C <sub>13</sub> H <sub>22</sub> O <sub>2</sub>	210
i	11.83	1.924	Isobornyl propionate	C <sub>15</sub> H <sub>22</sub> O	218
j	12.16	1.685	9-H-Cycloisolongifolene	C <sub>10</sub> H <sub>17</sub> Br	216
k	12.26	2.583	Cyclodecene	C <sub>21</sub> H <sub>34</sub> O <sub>2</sub>	318
l	12.46	7.103	1-Phenanthrenecarboxylic acid	C <sub>16</sub> H <sub>22</sub> O <sub>4</sub>	278
m	13.01	4.642	Benzenedicarboxylic acid	C <sub>15</sub> H <sub>24</sub>	204

**Figure 2** Gas chromatographic analysis of the essential oils of *Aquilaria crassna* on chromatogram of GC–MS. The pie charts depict the relative chemical compositions of sub-fractions. The details of the peaks are given in the Table 1.

medium with or without Eos extracts (5 and 10 µg/mL). The cells were washed twice with PBS, fixed with 4% paraformaldehyde for 30 min, washed with PBS, and stained simultaneously (30 min) with Hoechst 33258 at 10 µg/mL and rhodamine 123 at 5 µg/mL. Then, the cells were washed twice and observed under fluorescent microscopy. For chromatin condensation analysis, cells with bright condensed or fragmented nuclei were considered apoptotic; the images were acquired after 6 and 12 h.

The loss of mitochondrial membrane potential was indicated by the appearance of more brightly-stained cells; the images were captured after 6 and 12 h. The apoptotic cells were counted in 4 randomly selected fields per well. DMSO (0.1%) and 5-fluorouracil (10 µg) were used as negative and positive controls, respectively. The apoptotic index was calculated as the percentage of apoptotic cells compared to the total number of cells, and was presented as a mean ± SD. ( $n = 10$ ).

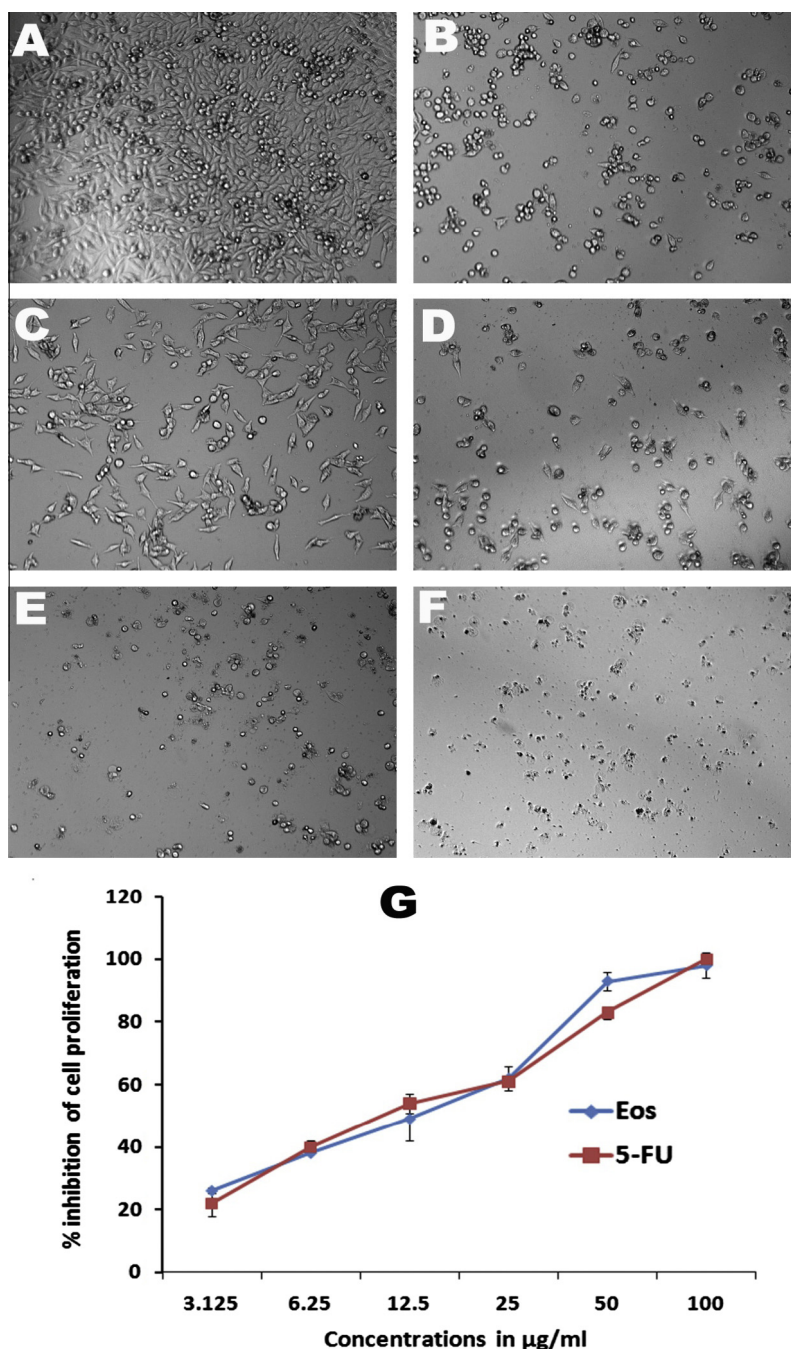
### 2.9. Statistical analysis

Statistical difference between the treatments and the control was evaluated by one-way analysis of variance (ANOVA) followed by Tukey's multiple comparison test. Differences were considered significant at  $p < 0.05$ , and  $p < 0.01$ .

## 3. Results

### 3.1. Characterization of Agarwood essential oils using FT-IR and GC–MS

Hydrodistillation of Agarwood gave a pale yellow oil with a strong pleasant aromatic odor (yield of 2.52%). The chemical characteristic of the investigated essential oils is presented in Fig. 1, where the FT-IR spectrum depicted two sharp (twin)



**Figure 3** Effect of essential oils on cellular morphology of human pancreatic cancer. Photomicrographic images of pancreatic cancer cell lines were taken under an inverted phase-contrast microscope at 200 $\times$  magnification using a digital camera at 48 h after treatment with essential oils. (A) Cells treated with vehicle (0.1% DMSO). The cells treated with 0.1% DMSO (Vehicle) revealed an aggressive proliferation. (B) Cells treated with essential oils at 6.25  $\mu\text{g/ml}$ . clear inhibition at sub-toxic dose. (C) Cell treated with essential oils at 12.5  $\mu\text{g/ml}$ . (D) Cell treated with essential oils at 25  $\mu\text{g/ml}$ . (E) Cell treated with essential oils at 50  $\mu\text{g/ml}$ . (F) Cell treated with standard drug, 5-fluorouracil at 10  $\mu\text{g/ml}$ . (G) Dose-dependent anti-proliferative effect of essential oils and 5-fluorouracil on pancreatic cancer cell line was assessed by MTT-assay (values are represented as mean  $\pm$  SD,  $n = 3$ ).

vibrational bands at 1711 and 1725  $\text{cm}^{-1}$  indicating the presence of at least two types of carbonyls. Furthermore, two strong vibrational bands at 2857 and 2924  $\text{cm}^{-1}$  assigned the presence of alkyl chains. This is also evident from the appearance of another set of two peaks at 1377 and 1455  $\text{cm}^{-1}$  for  $\text{C}_{\text{sp}^3}\text{-H}$  bending vibrations (alkyl chain). Also, a weak

vibrational band at 886  $\text{cm}^{-1}$  indicated the presence of alkene groups. Additionally, a broad vibrational band at 1588 (for  $\text{C}=\text{C}$ ) and 3466  $\text{cm}^{-1}$  (for  $\text{-OH}$ ) indicated the existence of phenol group. Moreover, the Eos of Agarwood was subjected to GC-MS analysis to quantify the major chemical constituents and molecular weight, respectively. The GC-MS data

such as retention time, % area peak, molecular formula and molecular weight obtained for the major constituents are given in Table 1. Detailed characteristics of the peaks identified in the GC-MS Fig. 2 were presented in the Table 1. The quantitative analysis of essential oils showed that the major dominant peak corresponds to  $\beta$ -Caryophyllene (8.111%), Octamethyl (7.103%), 2-Naphthalenemethanol (6.193%),  $\alpha$ -Caryophyllene (4.755%), benzenedicarboxylic acid (4.642%), azulene (3.925%), naphthalene (2.694%) and cyclodecene (2.583%).

### 3.2. Effect of EOs on the cell viability

The MTT cell proliferation assay was used to confirm the effect of Eos on MIA PaCa-2 cell viability. As shown in Fig. 3, Eos inhibited the proliferation of MIA PaCa-2 in a dose dependent manner. Although moderate effect on cell viability was detected at lower concentrations (3.12 and 6.25  $\mu\text{g/mL}$ ), EOs at higher concentrations were potentially decreased the cell viability with a median inhibitory concentration  $\text{IC}_{50}$  of  $11 \pm 2.18 \mu\text{g/mL}$ . 5-FLU, on the other hand, a standard therapeutic drug for pancreatic cancer, was used as a positive

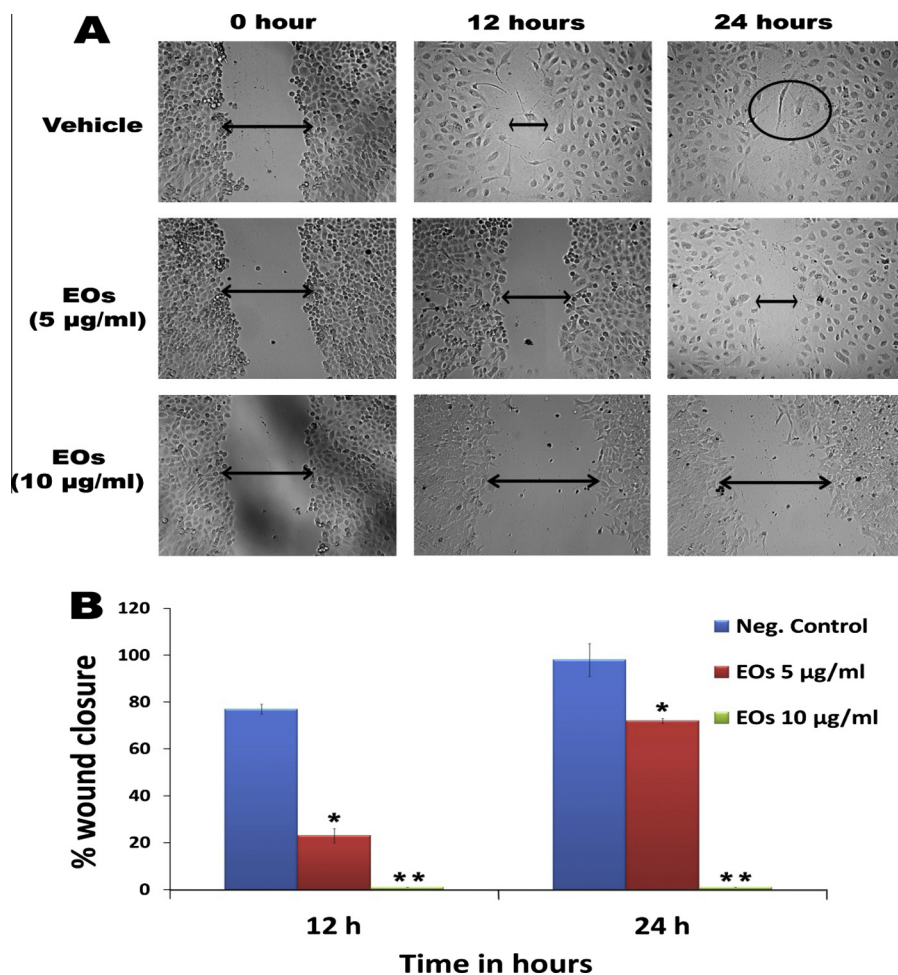
control, and showed significant toxicity toward MIA PaCa-2 cells with an  $\text{IC}_{50}$  of  $6.5 \pm 1.4 \mu\text{g/mL}$ .

### 3.3. Eos inhibited cell migration

The effect of EOs on the migration of MIA PaCa-2 cells was determined by the wound healing assay. The results are presented as percentage inhibition of migrating cells with Eos relative to untreated cells as shown in Fig. 4 A. The percentage of the wound closure after 24 h was  $92.6 \pm 4.5\%$  in the untreated cells, whereas Eos displayed dose and time dependent, at sub-cytotoxic concentrations 5  $\mu\text{g/mL}$  the percentage of wound closure calculated after 12 h was  $21.1 \pm 3$  ( $P < 0.05$ ). The value of Eos at 10  $\mu\text{g/mL}$  was significantly inhibited the motility of MIA PaCa-2 cells ( $P < 0.01$ ) Fig. 4B.

### 3.4. EOs inhibited MIA PaCa-2 colony formation

MIA PaCa-2 cells were treated with essential oil extracts after 48 h in the concentration ranging from (5–20  $\mu\text{g/ml}$ ) and the results showed significant dose dependent inhibition of the



**Figure 4** (A) Anti-migratory effect of essential oils against pancreatic cancer cell line. Interestingly, the extract displayed pronounced effect even at its subtoxic concentration (5  $\mu\text{g/ml}$ ), the essential oils caused dislodgement of monolayer of MIA PaCa-2 cells, which can be visualized under microscope. The photomicrograph., taken under an inverted phase-contrast microscope at 200 $\times$  magnification using a digital camera at 12 and 14 h after treatment with essential oils. (B) Graphical representation of the time and dose and time-dependent inhibitory effect essential oils on migration of MIA PaCa-2 cells (Values are in mean  $\pm$  SD,  $n = 6$ , \* =  $P < 0.1$ , \*\* =  $P < 0.005$ ).

pancreatic cancer cells as depicted in Fig. 5. Percentage of plating efficiency (PE) in negative control group was  $76 \pm 2\%$  which was significantly decreased to  $41 \pm 3\%$ ,  $28.6 \pm 2\%$  and  $10 \pm 4\%$  with Eos treatment at 5, 10 and 20  $\mu\text{g/ml}$  respectively Fig. 5A. The graphical representation Fig. 5B illustrates the quantitative estimation of the EOs activity against the clonogenicity of pancreatic cancer cells. The results of colony formation assay suggested that Eos can significantly obstructed colonization of MIA PaCa-2 cells.

### 3.5. EOs induced nuclear morphological changes of MIA PaCa-2 cells

The capability of EOs extract on nuclear morphology of MIA PaCa-2 cells was assessed by staining the nucleus with Hoechst 33258 stain. Fig. 6A illustrates that the cells treated with 0.1 DMSO showed distinct morphological characteristics with prominent nuclei and aggressive growth, whereas the signs of early and late apoptosis were noticed in nuclei of the treated cells with EOS in a time dependent manner. EOs at 10  $\mu\text{g/ml}$  caused nuclei condensation (arrows) at 6 h treatment Fig. 6B, whereas the typical apoptotic morphology was observed after 12 h with clear signs of nuclear shrinkage and crescent-shaped structure (arrows) indicates the morphological features of apoptosis Fig. 6C. These results were compared with the standard drug, 5-fluorouracil Fig. 6D. The apoptotic index of the negative control was  $1.9 \pm 0.2\%$  which was increased to  $22.6 \pm 4$  with EOs 10  $\mu\text{g/ml}$  after 12 h Fig. 6E.

### 3.6. Eos induced loss of the mitochondrial membrane potential in MIA PaCa-2 cells

The effect of Eos on the mitochondrial membrane potential of MIA PaCa-2 cells was studied by staining the cells with rhodamine 123 in order to measure the mitochondrial function in the treated cells. The result of this study showed a strong intensity of fluorescence in the untreated cells, indicates the aggressive growth and proliferation of the cells Fig. 7A, whereas the fluorescent signal decreased in the cells treated with EOs in a time dependent manner Fig. 7B and C. On the other hand, 5-fluorouracil exhibited remarkable reduction for the fluorescent signal Fig. 7D.

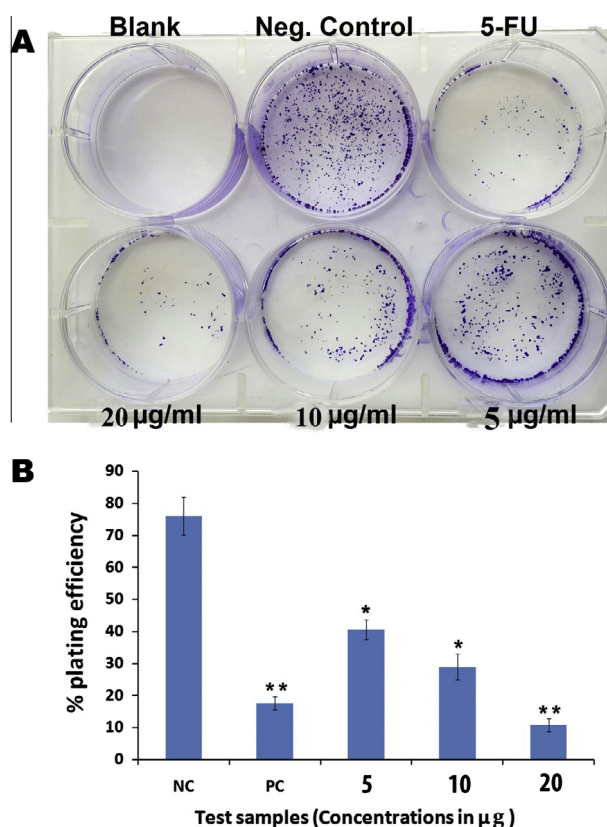
The apoptotic index estimated for EOs treatment on MIA PaCa-2 cells after 12 h treatment was  $21 \pm 5.4$  Fig. 7E.

## 4. Discussion

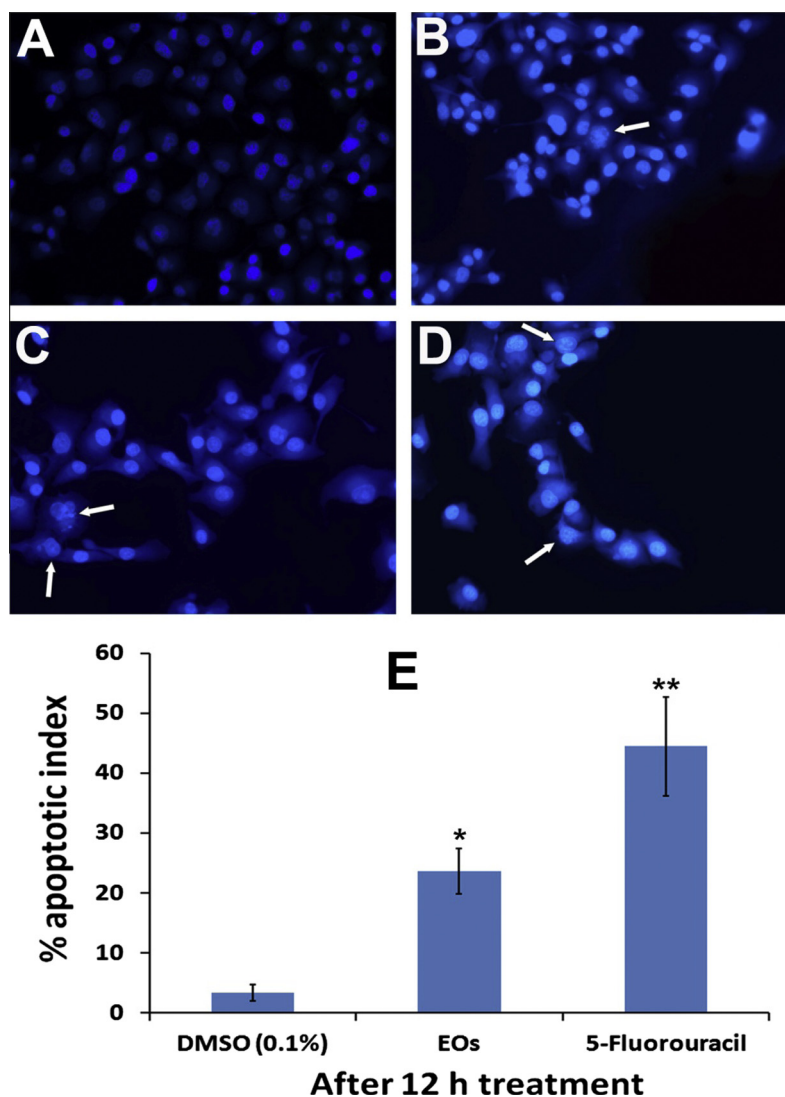
Pancreatic cancer is one of the most aggressive and devastating disease, which was characterized by rapid invasion and metastasis. Since the poor diagnosis and lack of chemotherapy response have failed to improve the survival rate of pancreatic cancer patients, thus new agents derived from plants which are safe, affordable and effective have attracted attention of researchers worldwide. However, essential oils are very interesting complex mixtures of volatile compounds, formed by aromatic plants as a secondary metabolites and characterized by a strong odors with a wide range of monoterpenes, sesquiterpenes and aromatic constituents which reported to have a potent anticancer activities against several cancers such as thymol,  $\gamma$ -terpinene from (*Carum copticum*), Eugenol and

$\beta$ -caryophyllene from (*Commiphora gileadensis*),  $\alpha$ -thujone and terpenyl acetate from (*Anisomeles malabarica*) and carvacrol from (*Santalum album*).<sup>20-23</sup> In this study, Eos exhibited a strong dose dependent antiproliferative activity, with an  $\text{IC}_{50}$  value  $11 \pm 2.18$   $\mu\text{g/ml}$ , and this result may be attributable to the collective phytochemical components, such as phenolic and aromatic contents particularly,  $\beta$ -Caryophyllene, Octamethyl, 2-Naphthalenemethanol, benzenedicarboxylic acid, azulene, and cyclodecene.

The mechanism of cell death due to the cytotoxic effect of the EOs was investigated by apoptosis as revealed in the Hoechst and rhodamine staining. The early and late stages of apoptotic process were observed in the cells treated with EOs in a time dependent manner, whereas untreated cells displayed prominent nuclei and intact cell membrane without significant changes in cellular structures. Morphologically, it is well established that the apoptosis is characterized by shrinkage of the cell, membrane blebbing, cell membrane disruption, condensation of nuclear chromatin, DNA fragmentation and formation of apoptotic bodies.<sup>24</sup> Moreover, a loss of mitochondrial membrane potential is a hallmark sign of



**Figure 5** (A) Effect of essential oils on survival of MIA PaCa-2 cells colonies in colony formation assay. The picture clearly depicts the strong anti-clonogenic effect of essential oils on colonies of the cancer cells. (B) The graphical representation illustrates the percentage of plating efficiencies after the treatment of the cells with essential oils at 5, 10 and 20  $\mu\text{g/ml}$  in comparison with negative control and the standard reference drug, 5-fluorouracil. The results were presented as mean  $\pm$  SD,  $n = 3$  (\* =  $p < 0.05$ , \*\* =  $p < 0.01$ ).



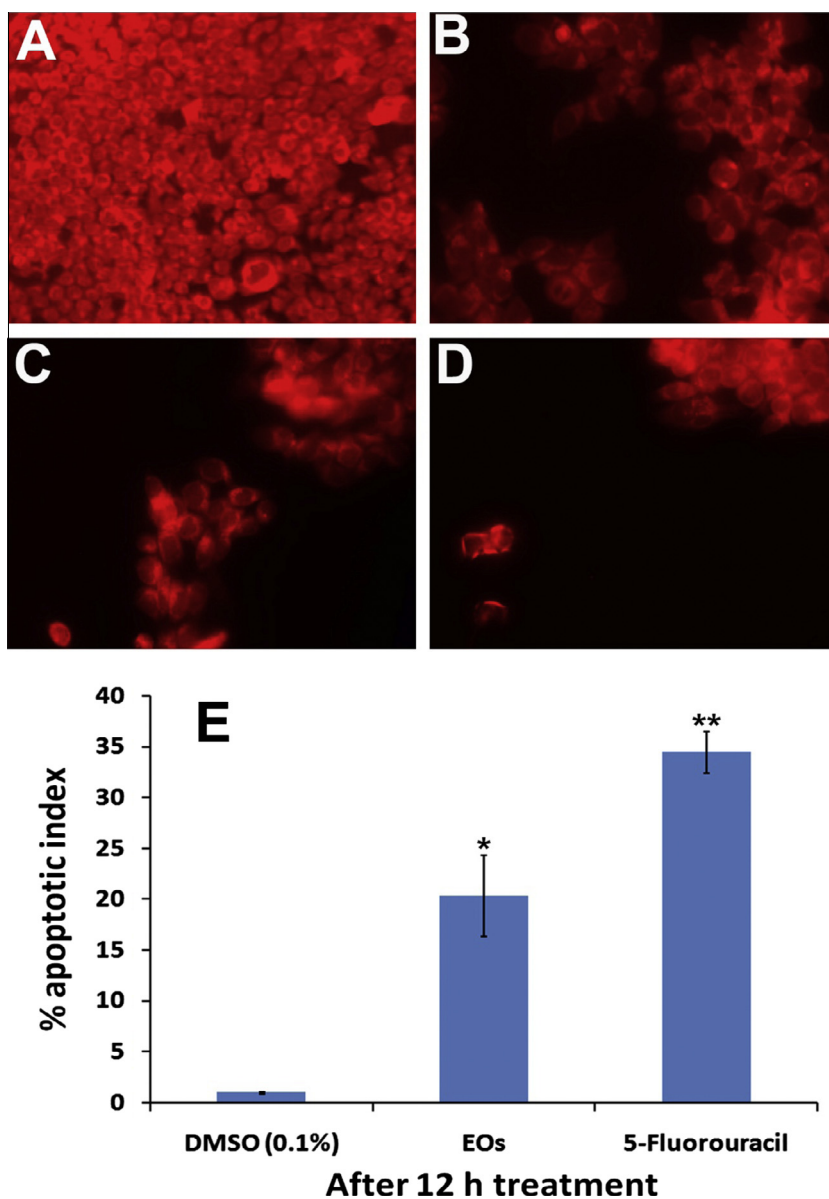
**Figure 6** The photomicrographs depict the images of MIA PaCa-2 cells with Hoechst 33258 stain, under an inverted phase-contrast microscope at 200 $\times$  magnification using a digital camera at 6 and 12 h after treatment with essential oils. (A) The cells treated with 0.1% DMSO (Vehicle) revealed an intact cell membrane with prompt and evenly distributed nucleus in cytosol. (B) Cells treated with 10  $\mu$ g/ml of essential oils after 6 h. The cells displayed early stage apoptotic such as membrane blebbing and chromatin condensation. (C) Cells treated with 10  $\mu$ g/ml of essential oils after 12 h. The arrows indicate the late staged apoptotic, signs such as of nuclear dissolution including crescent shaped apoptotic nuclei. (D) Cells treated with standard reference, 5-flourouracil (10  $\mu$ g/ml) also displayed significant induction of apoptosis in the cells. (E) Graphical representation of percentage of apoptotic indices MIA PaCa-2 cells. The apoptotic index was expressed as a percentage of the ratio of number of apoptotic cells to the total number of cell in 10 different microscopic fields. Values are presented as mean  $\pm$  SD ( $n = 10$ ), \* represents  $p < 0.05$  and \*\* represents  $p < 0.01$ .

apoptosis.<sup>25</sup> In order to obtain a deeper insight into the apoptotic effect of EOs the mitochondrial membrane potential was used by staining the cells with lipophilic cationic dye rhodamine 123. When the mitochondrial membrane potential decreases, uptake of the lipophilic cationic dye by the cells also decreases and eventually the fluorescent signal declines exponentially. In the present study, the MIA PaCa-2 cells treated with Eos appeared brighter than the controls with 0.1% DMSO, which indicates that the Eos extracts induced the apoptosis by activation of both DNA and mitochondrial pathways.

Pancreatic cancer is one of the most lethal form of cancers, which was characterized by high rates of local recurrence.<sup>26</sup>

Because of late diagnosis and lack of chemotherapy response, the 5-year survival rate for pancreatic cancer has still less than 5%. Currently, only gemcitabine and fluorouracil have been used consistently to improve the survival of pancreatic patients with marginal survival advantage.<sup>27</sup> More recently, several attempts have been made to find new agents derived from plants which are safe, available and effective against pancreatic cancer. Curcumin has been shown to enhance the antitumor activity of gemcitabine and to suppress NF $\kappa$ B activation with potent capability to control invasion, migration and induce apoptosis.<sup>28</sup> Another compound is boswellic acid, obtained from medicinal plant *Boswellia serrata*, have been found to inhibited the proliferation with K-Ras and p53 mutations,





**Figure 7** The photomicrographs depict the images of HCT 116 cells with Rhodamin 123 stain, taken under an inverted phase-contrast microscope at 200× magnification using a digital camera at 6 and 12 h after treatment with essential oils. (A) Cells treated with vehicle (0.1% DMSO). (B) Cells treated with essential oils 10 µg/ml after 6 h. (C) Cells treated with essential oils 10 µg/ml after 12 h. (D) Cells treated with standard reference, 5-flourouracil. (E) Graphical representation of percentage of apoptotic indices. The apoptotic index was expressed as a percentage of the ratio of number of unstained cells to the total number of cell in 10 different microscopic fields. Values are presented as mean  $\pm$  SD ( $n = 10$ ), \* represents  $p < 0.05$  and \*\* represents  $p < 0.01$ .

suppress the growth and metastasis of human pancreatic tumors in vitro and in vivo.<sup>29</sup> However, the inhibition of multi-step process of metastasis including cell proliferation, migration, invasion and colony formation is the hallmark of cancer treatment. Herein, we evaluated the effect of EOs against three key steps of metastasis. It is postulated that the proliferation and migration of tumor cell plays a dominant role at the initiation of metastatic cascade by increasing the motility of malignant cells, which detach from the primary site and invade the body's circulation. Once the tumor cells circulated in distant organs, formation of new vascular network will take place (angiogenesis) to supply the oxygen and nutrients,

allowing these cells to survive and colonize distant metastatic location. EOs significantly inhibited proliferation and migration of pancreatic cancer cells. More importantly, colonization of cancer cell was clearly obstructed by dose-dependent inhibitory effect of EOs. The significant suppression of numbers of colonies occurred after 7 days due to cytotoxic activity of EOs.

## 5. Conclusion

In conclusion, this is the first evidence for the effect of Agarwood essential oil on apoptosis and in vitro metastasis

of pancreatic cancer cells. These findings suggest that the EOs exhibited significant antimetastatic activities based on the strong inhibitory effect in proliferation, migration and colony formation. Thus, further investigation on the active principles of the extract could probably lead to the discovery of promising chemotherapeutic agents against pancreatic cancer.

#### Conflict of interest

We have no conflict of interest to declare.

#### Acknowledgments

Saad S. Dahham would like to acknowledge Universiti Sains Malaysia for the USM Fellowship.

#### References

- Ruddon RW. *Cancer biology*. Oxford University Press; 2007.
- Vincent A, Herman J, Schulick R, Hruban RH, Goggins M. Pancreatic cancer. *The Lancet* 2011;**378**:607–20.
- Zakharova OP, Karmazanovsky GG, Egorov VI. Pancreatic adenocarcinoma: outstanding problems. *World J Gastrointest Surg* 2012;**4**:104.
- Zavoral M, Minarikova P, Zavada F, Salek C, Minarik M. Molecular biology of pancreatic cancer. *World J Gastroenterol: WJG* 2011;**17**:2897.
- Keleg S, Büchler P, Ludwig R, Büchler MW, Friess H. Invasion and metastasis in pancreatic cancer. *Mol Cancer* 2003;**2**:14.
- Chaffer CL, Weinberg RA. A perspective on cancer cell metastasis. *Science* 2011;**331**:1559–64.
- Shasany AK, Shukla AK, Khanuja SP. Medicinal and aromatic plants. *Technical crops*. Springer; 2007. p. 175–96.
- Nassar ZD, Aisha AF, Al Suede FSR, Abdul Majid AS, Abdul Majid AMS. In vitro antimetastatic activity of koetjapic acid against breast cancer cells. *Biol Pharm Bull* 2012;**35**:503–8.
- Okugawa H, Ueda R, Matsumoto K, Kawanishi K, Kato A. Effects of agarwood extracts on the central nervous system in mice. *Planta Med* 1993;**59**:32–6.
- Okugawa H, Ueda R, Matsumoto K, Kawanishi K, Kato A. Effect of jinkoh-eremol and agarospirol from agarwood on the central nervous system in mice. *Planta Med* 1996;**62**:2–6.
- Majid AMSA, Dahham SS, Ahamed MBK, Saghir SM, Alsuede MA, Iqbal MA. Bioactive essential oils from *Aquilaria crassna* for cancer prevention and treatment. *Glob J Adv Pure Appl Sci* 2014;**4**.
- Hideaki H. Agarwood (*Aquilaria crassna*) extracts decrease high-protein high-fat diet-induced intestinal putrefaction toxins in mice. *Pharm Anal Acta* 2012.
- Jermisri P, Kumphune S. Ethylacetate extract of *Aquilaria crassna* preserve actin cytoskeleton on stimulated ischemia induced cardiac cell death. *J Med Plants Res* 2012;**6**:4057–62.
- Novriyanti E, Santosa E, Syafii W, Turjaman M, Sitepu IR. Anti fungal activity of wood extract of *Aquilaria crassna* Pierre ex Lecomte against agarwood-inducing fungi, *Fusarium solani*. *Indonesian J Forest Res* 2010;**7**:155–65.
- Kamonwannasit S, Kumkrai P, Nantapong N, Kupittayanant S, Chudapongse N. Antioxidant and antibacterial activities of the extract of *Aquilaria crassna* leaves. *Planta Med* 2011;**77**:PM15.
- Iqbal MA, Haque RA, Ahamed MBK, Majid AA, Al-Rawi SS. Synthesis and anticancer activity of para-xylyl linked bis-benzimidazolium salts and respective Ag (I) N-heterocyclic carbene complexes. *Med Chem Res* 2013;**22**:2455–66.
- Ahamed MBK, Aisha AF, Nassar ZD, et al. Cat's whiskers tea (*Orthosiphon stamineus*) extract inhibits growth of colon tumor in nude mice and angiogenesis in endothelial cells via suppressing VEGFR phosphorylation. *Nutr Cancer* 2012;**64**:89–99.
- Al-Salahi OSA, Kit-Lam C, Majid AMSA, et al. Anti-angiogenic quassinoid-rich fraction from *Eurycoma longifolia* modulates endothelial cell function. *Microvasc Res* 2013;**90**:30–9.
- Baharetha HM, Nassar ZD, Aisha AF, et al. Proapoptotic and antimetastatic properties of supercritical CO<sub>2</sub> extract of *Nigella sativa* Linn. against breast cancer cells. *J Med Food* 2013;**16**:1121–30.
- Yin Q-H, Yan F-X, Zu X-Y, et al. Anti-proliferative and proapoptotic effect of carvacrol on human hepatocellular carcinoma cell line HepG-2. *Cytotechnology* 2012;**64**:43–51.
- Preethy CP, Padmapriya R, Periasamy VS, et al. Antiproliferative property of n-hexane and chloroform extracts of *Anisomeles malabarica* (L). R. Br. in HPV16-positive human cervical cancer cells. *J Pharmacol Pharmacother* 2012;**3**:26.
- Patil JR, Jayaprakasha G, Murthy KC, Tichy SE, Chetti MB, Patil BS. Apoptosis-mediated proliferation inhibition of human colon cancer cells by volatile principles of *Citrus aurantifolia*. *Food Chem* 2009;**114**:1351–8.
- Bommareddy A, Rule B, VanWert AL, Santha S, Dwivedi C.  $\alpha$ -Santalol, a derivative of sandalwood oil, induces apoptosis in human prostate cancer cells by causing caspase-3 activation. *Phytomedicine* 2012;**19**:804–11.
- Bold RJ, Termuhlen PM, McConkey DJ. Apoptosis, cancer and cancer therapy. *Surg Oncol* November 1997;**6**:133–42.
- Susin SA, Lorenzo HK, Zamzami N, et al. Molecular characterization of mitochondrial apoptosis-inducing factor. *Nature* 1999;**397**:441–6.
- Mihaljevic AL, Michalski CW, Friess H, Kleeff J. Molecular mechanism of pancreatic cancer—understanding proliferation, invasion, and metastasis. *Langenbeck's Arch Surg* 2010;**395**(4):295–308.
- Bhardwaj V, Bhushan A, Lai JC, Tadinada SM. *Failure of pancreatic cancer chemotherapy: consequences of drug resistance mechanisms*. INTECH Open Access Publisher; 2012.
- Kunnumakkara AB, Diagaradjane P, Guha S, et al. Curcumin sensitizes human colorectal cancer Xenografts in nude mice to  $\gamma$ -radiation by targeting nuclear factor- $\kappa$ B-regulated gene products. *Clin Cancer Res* 2008;**14**:2128–36.
- Park B, Prasad S, Yadav V, Sung B, Aggarwal BB. Boswellic acid suppresses growth and metastasis of human pancreatic tumors in an orthotopic nude mouse model through modulation of multiple targets. *PLoS One* 2011;**6**:26943.