



African Journal of Urology

Official journal of the Pan African Urological Surgeons' Association
web page of the journal

www.ees.elsevier.com/afju
www.sciencedirect.com



Uro-Oncology

Case report

A rare case of synchronous association of chromophobe renal cell carcinoma with urothelial carcinoma of urinary bladder



A. Chaurasia*, S. Padmanabhana, P. Das, J. Aravind

Department of Urology, Government Medical College, Trivandrum, Kerala, India

Received 22 March 2016; received in revised form 19 May 2016; accepted 23 August 2016

Available online 4 January 2017

KEYWORDS

Chromophobe;
Renal cell carcinoma;
Urothelial carcinoma

Abstract

Introduction: Chromophobe renal cell carcinoma accounts for 3–5% of all RCCs. However, its association with urothelial carcinoma of urinary bladder has never been reported. We report a case of synchronous association of chromophobe RCC with low grade urothelial carcinoma of urinary bladder.

Observations: A 64-year old gentleman, presented with a dull aching pain in right loin region of one month duration. General physical and abdominal examinations were unremarkable. Ultrasonography of abdomen showed a well-defined hypoechoic mass lesion involving the lower pole of right kidney. CECT abdomen revealed a partially exophytic mass lesion of size 4 cm × 4.3 cm × 5.1 cm arising from lower pole of right kidney. Surprisingly, urinary bladder also showed a polypoidal mass lesion measuring 15 mm × 12 mm × 13 mm in posterior wall inferior to right vesico-ureteric junction. We proceeded with right partial nephrectomy followed by transurethral resection of bladder tumor. Histopathology report revealed chromophobe RCC and low grade urothelial carcinoma of urinary bladder. The patient is under regular follow-up.

Conclusion: Synchronous association of chromophobe RCC with urothelial carcinoma of urinary bladder has not been reported so far, hence there is no scientific consensus in the management of these lesions.

© 2016 Pan African Urological Surgeons' Association. Production and hosting by Elsevier B.V. This is an open access article under the CC BY-NC-ND license (<http://creativecommons.org/licenses/by-nc-nd/4.0/>).

* Corresponding author.

E-mail addresses: dr.ashishchaurasia@gmail.com (A. Chaurasia), dr.sivaramkrishnanp1234@gmail.com (S. Padmanabhana), pdas1234@gmail.com (P. Das), jarvind123@gmail.com (J. Aravind).

Peer review under responsibility of Pan African Urological Surgeons' Association.

<http://dx.doi.org/10.1016/j.afju.2016.08.002>

1110-5704/© 2016 Pan African Urological Surgeons' Association. Production and hosting by Elsevier B.V. This is an open access article under the CC BY-NC-ND license (<http://creativecommons.org/licenses/by-nc-nd/4.0/>).

Introduction

Chromophobe RCC accounts for 3–5% of all RCCs, that appears to be derived from the cortical portion of the collecting duct [1–3]. Thoenes and colleagues first described this entity in 1985, showing a 4.6% incidence in a series of 697 RCC cases [4]. In 1986, chromophobe RCC was included in the Mainz-Classification of renal cell tumours, which was based on histological and cytological criteria [5]. The Mainz-Classification was later revised in the Heidelberg Classification [6], which represents the current standard for sub-typing of renal cell tumours.

Although chromophobe RCC has been reported to have a more favourable prognosis than conventional renal cell carcinoma [4,7–9], sarcomatoid transformation has been reported [10,11]. Chromophobe RCC is commonly seen in the Birt–Hogg–Dubé syndrome, but most cases are sporadic. However, its association with urothelial carcinoma of urinary bladder has never been reported in literature. We report here such an unusual synchronous presentation of chromophobe RCC with urothelial carcinoma of bladder.

Case report

A 64-year old gentleman, presented with dull aching pain in right loin region of 1 month duration. General physical and abdominal examinations were unremarkable. Ultrasonography of abdomen showed a well-defined hypoechoic mass lesion of size 5 cm × 3.7 cm involving the lower pole of right kidney (Fig. 1). Further, CECT abdomen revealed a partially exophytic mass lesion of size 4 cm × 4.3 cm × 5.1 cm arising from lower pole of right kidney (Fig. 2). Surprisingly, urinary bladder also showed a polypoidal mass lesion measuring 15 mm × 12 mm × 13 mm in posterior wall inferior to right vesico-ureteric junction (Fig. 3). Left kidney was normal.

We proceeded with right partial nephrectomy followed by transurethral resection of bladder tumour (TURBT). A single, immediate, post-operative intravesical instillation of chemotherapy (Mitomycin C) was given. Histopathology report came as chromophobe RCC (Fig. 4) for the partial nephrectomy specimen. Hale's colloidal staining was positive (Fig. 5). Immunohistochemical staining was positive for epithelial membrane antigen and CD117



Figure 1 Ultrasonography of abdomen showing a well-defined hypoechoic mass lesion in the lower pole of right kidney.

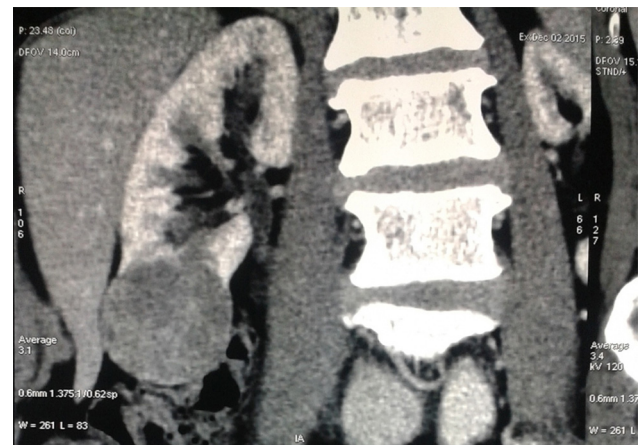


Figure 2 CECT abdomen showing a partially exophytic mass lesion arising from lower pole of right kidney.

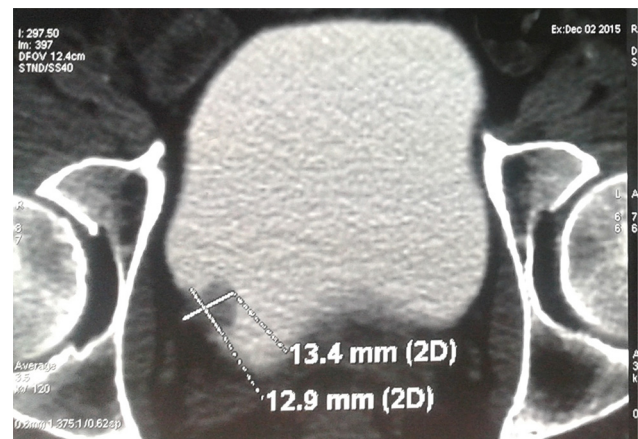


Figure 3 A polypoidal mass lesion in posterior wall of urinary bladder inferior to right vesico-ureteric junction.

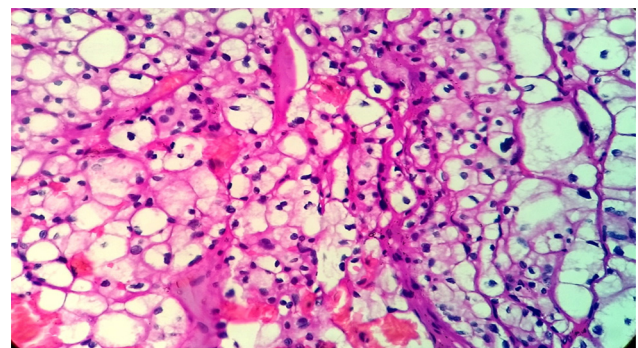


Figure 4 Chromophobe RCC features *Large polygonal* cells with transparent slightly reticulated cytoplasm with prominent cell membranes, and *Smaller cells* with granular eosinophilic cytoplasm.

(Figs. 6 and 7). However, it did not stain for vimentin (Fig. 8). TURBT specimen was reported as low grade superficial papillary urothelial carcinoma (Fig. 9). The patient is under regular follow-up, and no signs of recurrence has been detected.

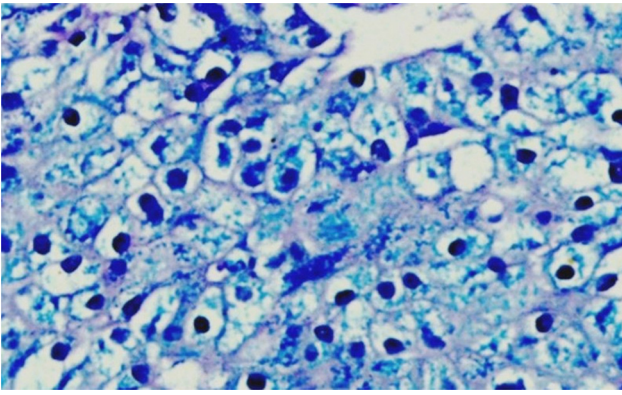


Figure 5 Hale's colloidal iron positivity shown by the tumour tissue. It stains acid mucin present inside cytoplasmic vacuoles.

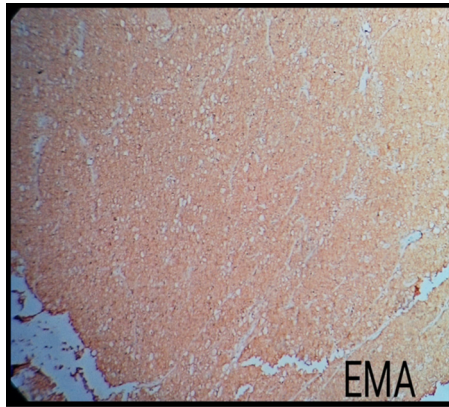


Figure 6 Immunohistochemical staining for chromophobe RCC was positive for epithelial membrane antigen.



Figure 7 CD117 positive on immunohistochemical staining.

Discussion

The simultaneous occurrence of different types of urological malignancies in the same patient is quite rare. There have been reports in the literature about synchronous renal cell carcinoma and Urothelial carcinoma in the same kidney [12] and also in ureter/urinary bladder [13].

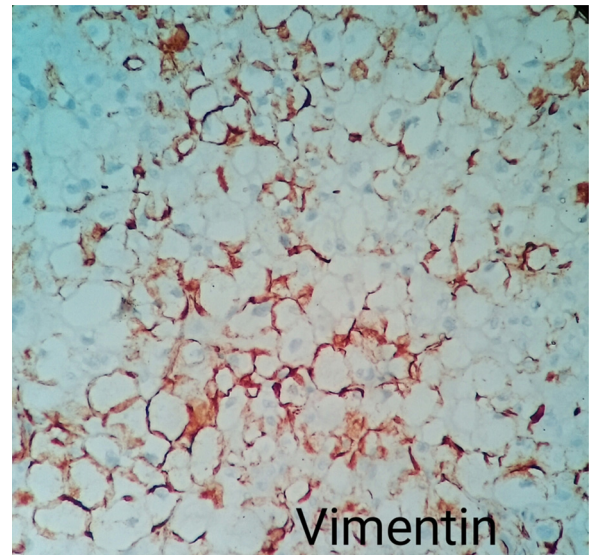


Figure 8 Chromophobe RCC staining was negative for vimentin.

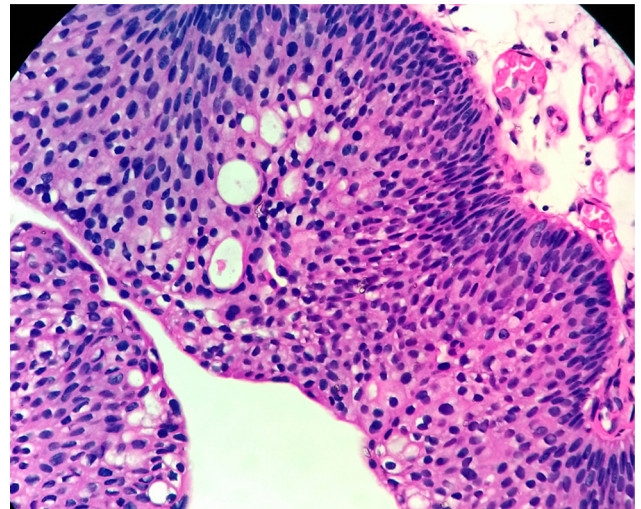


Figure 9 TURBT specimen was low grade papillary urothelial carcinoma.

Chromophobe RCC has a better prognosis for localized chromophobe RCC than for clear cell RCC, but a poor outcome in the subset of patients with sarcomatoid features or metastatic disease. Chromophobe RCC generally has an indolent course, with only 4% developing recurrence or metastasis [14]. Histologic features associated with adverse outcome included tumour size, microscopic tumour necrosis, and sarcomatoid features.

Several studies have shown single instillation of chemotherapy following TURBT is most effective in tumour types with the lowest tendency towards recurrence, i.e., in single, small tumours [15,16]. As simultaneous occurrence of chromophobe RCC and urothelial carcinoma of bladder has never been reported in literature, there is no scientific consensus in the management of these lesions. Chromophobe RCC being an indolent tumour and urothelial carcinoma of bladder also being low grade, both the lesions were safely managed with adequate surgical intervention removing the cancerous tissue completely, without hampering quality of life of the patient.

Conflict of interest

None declared.

Source of funding

No funding.

Consent from the patient obtained

All authors declare that informed consent was obtained from the patient participating in this study.

Authors' contributions

A. Chaurasia: Writing the script.

S. Padmanabhana: Revision of the script.

P. Das: Discussion at Pathology Department.

J. Aravind: Revision of the script.

References

- [1] Thoenes W, Störkel S, Rumpelt HJ, Moll R, Baum HP, Werner S. Chromophobe cell renal carcinoma and its variants—a report on 32 cases. *J Pathol* 1988;155:277–87.
- [2] Cindolo L, De la Taille A, Schips L, Zigeuner RE, Ficarra V, Tostain J, et al. Chromophobe renal cell carcinoma: comprehensive analysis of 104 cases from multicenter European database. *Urology* 2005;65:681–6.
- [3] Novick AC. Kidney cancer: past, present, and future. *Urol Oncol* 2007;25:188–95.
- [4] Thoenes W, Störkel S, Rumpelt HJ. Human chromophobe cell renal carcinoma. *Virchows Arch B Cell Pathol Incl Mol Pathol* 1985;48:207–17.
- [5] Thoenes W, Störkel S, Rumpelt HJ. Histopathology and classification of renal cell tumors (adenomas, oncocytomas, and carcinomas). The basic cytological and histopathological elements and their use for diagnostics. *Pathol Res Pract* 1986;181:125–43.
- [6] Kovacs G, Akhtar M, Beckwith BJ, Bugert P, Cooper CS, Delahunt B, et al. The Heidelberg classification of renal cell tumors. *J Pathol* 1997;183:131–3.
- [7] Billis A, Carvalho RB, Magrini E, Mattos AC, Negretti F, Niero VR, et al. Chromophobe renal cell carcinoma: clinicopathological study of 7 cases. *Ultrastruct Pathol* 1998;22:19–26.
- [8] Crotty TB, Farrow GM, Lieber MM. Chromophobe cell renal carcinoma: clinicopathological features of 50 cases. *J Urol* 1995;154:964–7.
- [9] Bonsib SM, Lager DJ. Chromophobe cell carcinoma: analysis of five cases. *Am J Surg Pathol* 1990;14:260–7.
- [10] Itoh T, Chikai K, Ota S, Nakagawa T, Takiyama A, Mouri G, et al. Chromophobe renal cell carcinoma with osteosarcoma-like differentiation. *Am J Surg Pathol* 2002;26:1358–62.
- [11] Kuroda N, Hayashi Y, Itoh H. A case of chromophobe renal cell carcinoma with sarcomatoid foci and a small daughter lesion. *Pathol Int* 1998;48:812–7.
- [12] Ferrero Doria R, Guzman Martinez-Valls PL, Morga Egea JP, Tomas Ros M, Rico Galiano JL, Sempere Gutiérrez A, et al. Transitional cell carcinoma and renal cell adenocarcinoma: unusual case of association in the same kidney. *Actas Urol Esp* 1998;22(5):431–3.
- [13] Straub B, Muller M, Schrader M, Goessl C, Heicappell R, Miller K. Concomitant spread of a renal cell carcinoma beyond the kidney and a transitional cell carcinoma beyond the bladder. *Int Urol Nephrol* 2000;32(2):249–50.
- [14] Przybycin CG, Cronin AM, Darvishian F, Gopalan A, Al-Ahmadie HA, Fine SW, et al. Chromophobe renal cell carcinoma: a clinicopathologic study of 203 tumors in 200 patients with primary resection at a single institution. *Am J Surg Pathol* 2011;35(7):962–70.
- [15] Berrum-Svennung I, Granfors T, Jahnson S, Boman H, Holmäng S. A single instillation of epirubicin after transurethral resection of bladder tumors prevents only small recurrences. *J Urol* 2008;179(1):101–5.
- [16] Gudjonsson S, Adell L, Merdasa F, Olsson R, Larsson B, Davidsson T, et al. Should all patients with non-muscle-invasive bladder cancer receive early intravesical chemotherapy after transurethral resection? The results of a prospective randomised multicentre study. *Eur Urol* 2009;55(April (4)):773–80.