



Original Article

Open Access

Molecular characterization of methicillin-resistant *Staphylococcus aureus* isolates from a hospital in Ghana

*^{1, 2}Asante, J., ¹Govinden, U., ²Owusu-Ofori, A., ³Bester, L. A., and ¹Essack, S. Y.

¹Antimicrobial Research Unit, College of Health Sciences, University of KwaZulu Natal, Private Bag X54001, Durban, 4000, South Africa

²Department of Clinical Microbiology, School of Medical Sciences, Kwame Nkrumah University of Science and Technology, Kumasi, Ghana

³Biomedical Resource Unit, School of Laboratory Medicine and Medical Sciences, University of KwaZulu Natal, Durban, South Africa

*Correspondence to: josante33@yahoo.com

Abstract:

Background: Methicillin-resistant *Staphylococcus aureus* (MRSA) are a major cause of hospital- and community-acquired infection. They can colonize humans and cause a wide range of infections including pneumonia, endocarditis and bacteraemia. We investigated the molecular mechanism of resistance and virulence of MRSA isolates from a teaching hospital in Ghana.

Methodology: A total of 91 *S. aureus* isolates constituted the initial bacterial sample. Identification of *S. aureus* was confirmed by the VITEK 2 system. The ceftioxin screen test was used to detect MRSA and antibiotic susceptibility was determined using the VITEK 2 system. The resistance (*mecA*, *blaZ*, *aac-aph*, *ermC*, and *tetK*) and virulence (*lukS/F-PV*, *hla*, *hld* and *eta*) genes were amplified by polymerase chain reaction (PCR) and positive samples subjected to DNA sequencing. Pulsed field gel electrophoresis (PFGE) was used to ascertain the relatedness of the isolates.

Results: Fifty-eight of 91 (63.7%) isolates were putatively methicillin resistant by the phenotypic ceftioxin screen test and oxacillin MICs. However, 43 (47%) of the isolates were genotypically confirmed as MRSA based on PCR detection of the *mecA* gene. Furthermore, 37.9% of isolates displayed resistance to tetracycline, 19% to trimethoprim-sulphamethoxazole, 15.5% to clindamycin, 12.1% to gentamicin, 13.8% to ciprofloxacin and erythromycin, 6.9% to moxifloxacin and 7.0% to rifampicin. None of the isolates was positive for inducible clindamycin resistance. The prevalence of resistance (*mecA*, *blaZ*, *aac(6')-aph(2'')*, *tetK*, and *ermC*) and virulence (*hla* and *lukS/F-PV*) genes respectively were 74%, 33%, 22%, 19%, 3%, 5% and 3%, with isolates organized in two highly related clades.

Conclusion: Results indicate a fairly high occurrence of MRSA, which can complicate the effective therapy of *S. aureus* infections, necessitating surveillance and stringent infection control programmes to forestall its spread.

Keywords: MRSA, *mecA*, *blaZ*, *hla*, *lukS/F-PV*

Received February 18, 2019; Revised April 9, 2019; Accepted April 11, 2019

Copyright 2019 AJCEM Open Access. This article is licensed and distributed under the terms of the Creative Commons Attribution 4.0 International License (<http://creativecommons.org/licenses/by/4.0>), which permits unrestricted use, distribution and reproduction in any medium, provided credit is given to the original author(s) and the source.

Caractérisation moléculaire d'isolats de *Staphylococcus aureus* résistants à la méthicilline provenant d'un hôpital du Ghana

*^{1,2}Asante, J., ¹Govinden, U., ²Owusu-Ofori, A., ³Bester, L. A., and ¹Essack, S. Y.

¹Unité de recherche antimicrobienne, Collège des sciences de la santé, Université du KwaZulu Natal, Sac privé X54001, Durban, 4000, Afrique du Sud.

²Département de microbiologie clinique, Faculté des sciences médicales, Université des sciences et technologies Kwame Nkrumah, Kumasi, Ghana

³Unité des ressources biomédicales, École de médecine de laboratoire et des sciences médicales, Université de KwaZulu Natal, Durban, Afrique du Sud

*Correspondance à: josante33@yahoo.com

Abstrait:

Contexte: Le *Staphylococcus aureus* résistant à la méthicilline (SARM) est une cause majeure d'infection acquise à l'hôpital et dans la communauté. Ils peuvent coloniser les humains et causer un large éventail d'infections, notamment la pneumonie, l'endocardite et la bactériémie. Nous avons étudié le mécanisme moléculaire de résistance et de virulence des isolats de SARM provenant d'un hôpital universitaire au Ghana.

Méthodologie: Au total, 91 isolats de *S. aureus* constituaient l'échantillon bactérien initial. L'identification de *S. aureus* a été confirmée par le système VITEK 2. Le test de dépistage à la céfoxitine a été utilisé pour détecter le SARM et la sensibilité aux antibiotiques a été déterminée à l'aide du système VITEK 2. Les gènes de résistance (*mecA*, *blaZ*, *aac-aph*, *ermC* et *tetK*) et de virulence (*lukS/F-PV*, *hla*, *hld* et *eta*) ont été amplifiés par une réaction en chaîne de la polymérase (PCR) et des échantillons positifs soumis à un séquençage de l'ADN. Une électrophorèse sur gel en champ pulsé (PFGE) a été utilisée pour déterminer le caractère apparent des isolats.

Résultats: Cinquante-huit des 91 isolats (63,7%) étaient présumés résistants à la méthicilline par le test de dépistage phénotypique à la céfoxitine et par les CMI oxacillines. Cependant, 43 (47%) des isolats ont été confirmés génotypiquement comme SARM sur la base de la détection par PCR du gène *mecA*. En outre, 37,9% des isolats présentaient une résistance à la tétracycline, 19% au triméthoprime-sulfaméthoxazole, 15,5% à la clindamycine, 12,1% à la gentamicine, 13,8% à la ciprofloxacine et à l'érythromycine, 6,9% à la moxifloxacine et 7,0% à la rifampicine. Aucun des isolats n'était positif pour la résistance inductible à la clindamycine. La prévalence des gènes de résistance (*mecA*, *blaZ*, *aac(6')-aph(2'')*, *tetK* et *ermC*) et de virulence (*hla* et *lukS/F-PV*) était respectivement de 74%, 33%, 22%, 19%, 3%, 5% et 3%, avec des isolats organisés en deux clades fortement apparentés.

Conclusion: Les résultats indiquent une présence assez élevée de SARM, ce qui peut compliquer le traitement efficace des infections à *S. aureus*, nécessitant une surveillance et des programmes de contrôle des infections rigoureux pour prévenir sa propagation.

Mots-clés: SARM, *mecA*, *blaZ*, *hla*, *lukS/F-PV*

Introduction:

Staphylococcus aureus cause a variety of infections, including mild skin infections such as boils, stye and furuncles as well as more severe infections such as meningitis, pneumonia, phlebitis, mastitis, urinary tract infections, endocarditis and osteomyelitis (1). Methicillin resistance is problematic for many healthcare facilities worldwide as is the occurrence of community strains of methicillin resistant *Staphylococcus aureus* (MRSA) which also

harbor genes associated with increased virulence (2, 3). MRSA strains are produced by *S. aureus* when the *mecA* gene is acquired by methicillin susceptible *S. aureus* (MSSA). The *mecA* gene is borne on the mobile element referred to as the staphylococcal cassette chromosome (SCC) *mec* (4, 5).

There is considerable variability in the prevalence as well as the epidemiology of MRSA within and between countries (6) with limited data on the antibiotic susceptibility patterns and

molecular epidemiology of MRSA in Africa. Several African countries report a MRSA prevalence ranging from 4.8% to 20.0% (7-14). This study investigated the antibiotic susceptibility and molecular characterization of MRSA isolates from clinical samples in a Ghanaian hospital.

Materials and methods:

Ethical considerations

Ethical clearance was obtained from Biomedical Research Ethics Committee of University of KwaZulu-Natal (BE068/15) and the Committee on Human Research, Publication and Ethics of the Kwame Nkrumah University of Science and Technology, Kumasi, Ghana (CHRPE/AP/220/15).

Collection and identification of bacterial isolates

A total of 91 *S. aureus* isolates from different patients were collected from the Komfo Anokye Teaching Hospital in Ghana between May and September 2015. Presumptive staphylococci were identified by colony morphology (cream to golden yellow colour) on blood agar and the coagulase test (slide method) conducted by the Microbiology Unit of the hospital. Isolates were subjected to further tests including mannitol fermentation and the tube coagulase test. The identity of isolates was also confirmed by the automated VITEK 2 system (BioMérieux, Marcy-L'Etoile, France). Fifty-eight isolates were confirmed as MRSA (the cefoxitin screen test) and included for further study.

Detection of MRSA and antibiotic susceptibility profiles

The cefoxitin test was used to screen for MRSA according to CLSI guidelines (15). The MICs for MRSA isolates were determined using the automated VITEK 2 system for the following antibiotics: oxacillin, gentamicin, ciprofloxacin, moxifloxacin, erythromycin, clindamycin, linezolid, teicoplanin, vancomycin, tetracycline, tigecycline, fusidic acid, rifampicin and trimethoprim-sulfamethoxazole, and results interpreted

according to CLSI guidelines (15). *S. aureus* ATCC 25923 was used as the reference strain. Inducible clindamycin resistance was tested by the 'D-zone' (16).

DNA extraction, PCR and sequencing of virulence and resistance genes

Genomic DNA was extracted using the Roche High Pure PCR Template Preparation Kit (Roche, Mannheim, Germany) according to the manufacturer's instructions and the concentration and purity were determined by Nanodrop™ 1000 spectrophotometer (Thermo Scientific, USA). The resistance genes *mecA*, *bla_Z*, *aac-aph*, *ermC*, *tetK* conferring resistance to oxacillin, penicillin, aminoglycosides, macrolide-lincosamide-streptogramin B and tetracyclines respectively and the virulence genes *lukS/F-PV*, *hla*, *hld* and *eta* encoding Panton-Valentine Leucocidin (PVL), alpha haemolysin, delta haemolysin and exfoliative toxin A respectively were amplified. Amplification of genes was done using T100™ Thermal cycler (Bio-Rad, USA), using primers described elsewhere (17-20) (Table 1).

Genes investigated are those that confer resistance to some of the most commonly prescribed antibiotics in Ghana and virulence genes were selected based on their importance in staphylococcal infections. PCR experiments were carried out using the 2x PCR master mix (ThermoScientific, USA), 1.25 µL each of forward and reverse primers, and 50-200 ng of template DNA in a total reaction volume of 25 µL. PCR products were run on 1.5% agarose gel at 65V for 90 min and visualized by UV transillumination using Bio-Rad ChemiDoc™ MP System (Bio-Rad, UK). The PCR products were sequenced (Inqaba Biotech, Pretoria, South Africa) to confirm the identity of the genes. Analysis of the sequences was done using ChromasPro 1.9.9.1 (Technelysium, Queensland Australia), BioEdit and BLAST 2.0 available on the National Center for Biotechnology Information (NCBI) website <http://www.ncbi.nlm.nih.gov/blast/BLAST.cgi>.

Table 1: Oligonucleotide primers and cycling conditions for the detection of genes in this study

Gene	Primer sequence	PCR program	Amplicon size (bp)	Reference
<i>mecA</i>	F-AACAGGTGAATTATTAGCACTTGTAAG	3min 95°C, 30s 55°C, 1min 72°C	174	Ref 17
	R-ATTGCTGTTAATATTTTTGAGTTGAA			
<i>blaZ</i>	F-ACTTCAACACCTGCTGCTTTC	3min 95°C, 30s 55°C, 1min 72°C	173	Ref 17
	R-TGACCACTTTTATCAGCAACC			
<i>tetK</i>	F-TCGATAGGAACAGCAGTA	3min 95°C, 30s 51°C, 1min 72°C	169	Ref 18
	R-CAGCAGATCCTACTCCTT			
<i>aac (6')-aph (2'')</i>	F-TAATCCAAGAGCAATAAGGGC	3min 95°C, 30s 54°C, 1min 72°C	227	Ref 19
	R-GCCCACTATCATAACCACTA			
<i>ermC</i>	F-CTTGTTGATCAGGATAATTTC	3min 95°C, 30s 52°C, 1min 72°C	190	Ref 17
	R-ATCTTTTAGCAAACCCGTATTC			
<i>eta</i>	F-GCAGGTGTTGATTTAGCATT	3min 95°C, 30s 51°C, 1min 72°C	93	Ref 20
	R-AGATGTCCCTATTTTTGCTG			
<i>lukS/F-PV</i>	F-ATCATTAGGTAATGTCTGGACATGATCCA	3min 95°C, 30s 58°C, 1min 72°C	443	Ref 20
	R-GCATCAAGTGTATTGGATAGCAAAGC			
<i>hla</i>	F-CTGATTACTATCCAAGAAATTCGATTG	3min 95°C, 30s 55°C, 1min 72°C	209	Ref 20
	R-CTTCCAGCCTACTTTTTTATCAGT			
<i>hld</i>	F-AAGAATTTTTATCTTAATTAAGGAAGGAGTG	3min 95°C, 30s 55°C, 1min 72°C	111	Ref 20
	R-TTAGTGAATTTGTTCACTGTGTCGA			

PFGE typing

Strain typing was conducted using pulsed field gel electrophoresis (PFGE) as described by Tenover *et al.*, (21) using contour-clamped homogeneous electric field apparatus (CHEF DR-III; BioRad, Hercules, CA). Restriction was done with the *Sma*I restriction enzyme for *S. aureus*. Analysis of results was done using BioNumerics software version 6.6 (Applied Maths NV, Belgium) using the Dice coefficient and represented by unweighted pair group method with arithmetic mean (UPGMA) with optimization settings and position tolerance set at 0.5% and 1% respectively was used to analyze the electrophoretic patterns. Clusters were defined as described by Tenover *et al.*, (21).

Results:

Overall, fifty-eight (63.7%) isolates were putatively methicillin resistant as detected by the phenotypic cefoxitin screen test and oxacillin MICs. The

detailed phenotypic and genotypic profiles of MRSA isolates are available in the supplementary material. Thirty-five (60.3%) isolates were from blood, 5 (8.6%) from urethral swabs, 4 (6.9%) from urine and 14 (24.1%) from unknown sources.

Table 2 delineates the percentage resistance to different antibiotics tested. Generally, 37.9% of MRSA isolates displayed resistance to tetracycline, 19% to trimethoprim-sulphamethoxazole, 15.5% to clindamycin, 12.1% to gentamicin, 13.8% to ciprofloxacin and erythromycin, 6.9% to moxifloxacin and 7.0% to rifampicin. None of the MRSA isolates tested positive for inducible clindamycin resistance. All isolates were fully susceptible to linezolid, teicoplanin, vancomycin, tigecycline and fusidic acid.

Table 3 shows the distribution of resistance and virulence genes screened. The prevalence of resistance (*mecA*, *blaZ*, *aac(6')-aph(2'')*, *tetK* and *ermC*) and virulence (*hla* and *lukS/F-PV*) genes respectively were 74%, 33%, 22%, 19%,

3%, 5% and 3%, with isolates organized into two highly related clades. None of the

isolates expressed the *hld* and *eta* virulence genes (Fig 1).

Table 2: Antibiotic susceptibility profile of MRSA isolates (n=58)

Antibiotic	No sensitive (%)	No intermediate (%)	No resistant (%)
Oxacillin	0 (0.0)	0 (0.0)	58 (100.0)
Gentamicin	49 (84.5)	2 (3.4)	7 (12.1)
Ciprofloxacin	49 (84.5)	1 (1.7)	8 (13.8)
Moxifloxacin	54 (93.1)	0 (0.0)	4 (6.9)
Erythromycin	49 (84.5)	1 (1.7)	8 (13.8)
Clindamycin	18 (31.0)	31 (53.4)	9 (15.5)
Linezolid	58 (100.0)	0 (0.0)	0 (0.0)
Teicoplanin	58 (100.0)	0 (0.0)	0 (0.0)
Vancomycin	58 (100.0)	0 (0.0)	0 (0.0)
Tetracycline	36 (62.1)	0 (0.0)	22 (37.9)
Tigecycline	58 (100.0)	0 (0.0)	0 (0.0)
Fusidic acid*	15 (26.3)	42 (73.7)	0 (0.0)
Rifampicin*	37 (65.0)	16 (28.0)	4 (7.0)
Trimethoprim/sulphamethoxazole	46 (79.3)	1 (1.7)	11 (19.0)

*n=57 as MICs could not be determined for 1 isolate each

Table 3: Distribution of virulence and resistance genes (%) in MRSA strains

Gene	%
<i>MecA</i>	74
<i>BlaZ</i>	33
<i>ErmC</i>	3
<i>aac(6')-aph(2'')</i>	22
<i>TetK</i>	19
<i>Hla</i>	5
<i>Hld</i>	0
<i>Eta</i>	0
<i>lukS/F-PV</i>	3

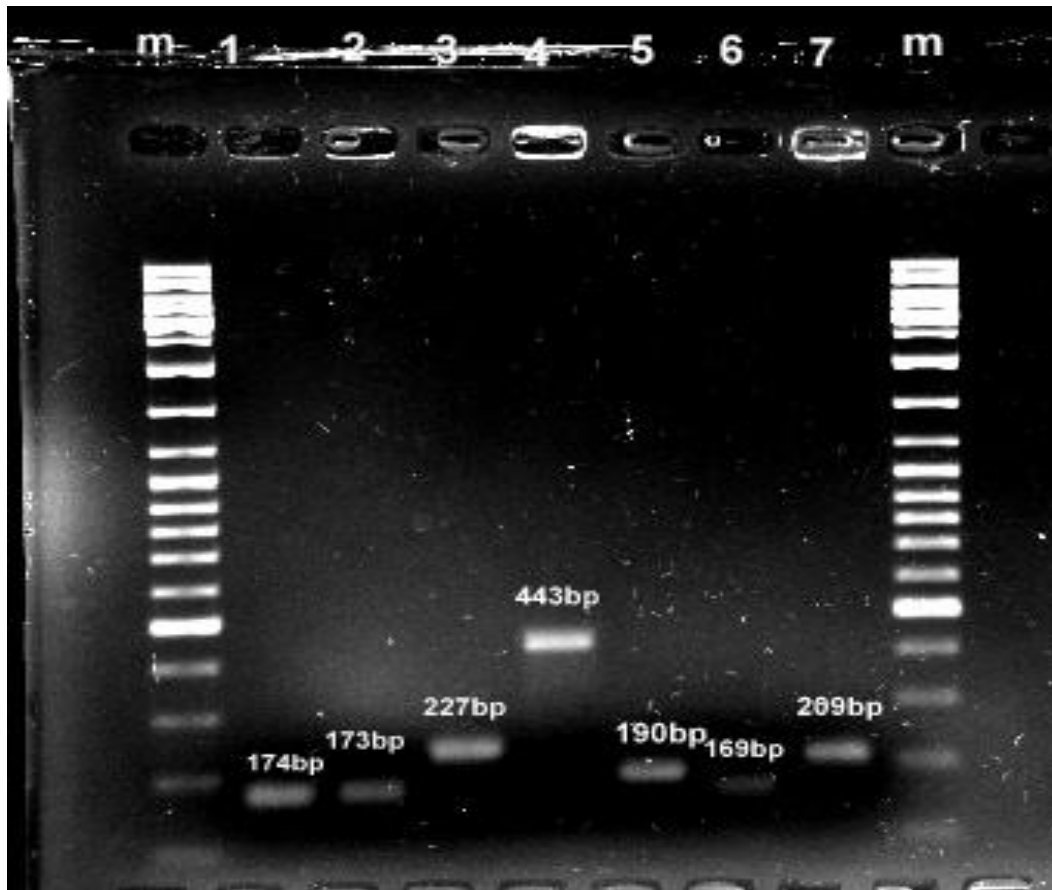


Fig 1: PCR mapping

Lanes M: DNA molecular marker, Lane 1: *mecA*, Lane 2: *blaZ*, Lane 3: *aac(6′)-aph(2′′)*, Lane 4: *lukS/F-PV*, Lane 5: *ermC*, Lane 6: *tetK*, Lane 7: *hla*

Three single nucleotide polymorphisms (SNPs) were observed for isolate S15, in the *hla* gene (C→T [12], T→A [15] and T→C [204]) as well as an insertion of G [8] and an SNP (G→C [429]) in the *lukS/F-PV* gene (KY056259). A missense mutation of N41S was observed in the *hla* protein (compared with the *hla* protein of *S. aureus* gb|AIG51324.1). Two SNPs (G→A [10] and A→C [111]) were also observed in the *blaZ* gene for isolate S31. A missense mutation of N98T was present in the *blaZ* protein (compared with the *blaZ* protein of *S. aureus* gb|ACP40660.1). Two putatively

novel nucleotide sequences for *hla* and *blaZ* genes were submitted to GenBank and the following accession numbers were assigned; KY056259 (*hla*) and KY056260 (*blaZ*). Detailed report of sequence analysis can be found in supplementary material at www.afrcem.org

PFGE analysis showed two major clades (A and B) of highly related isolates. The most resistant isolates against the most commonly prescribed antibiotics (i.e. gentamicin, ciprofloxacin, erythromycin, clindamycin, tetracycline and trimethoprim-sulfamethoxazole) belonged to clade B type (Fig 2).

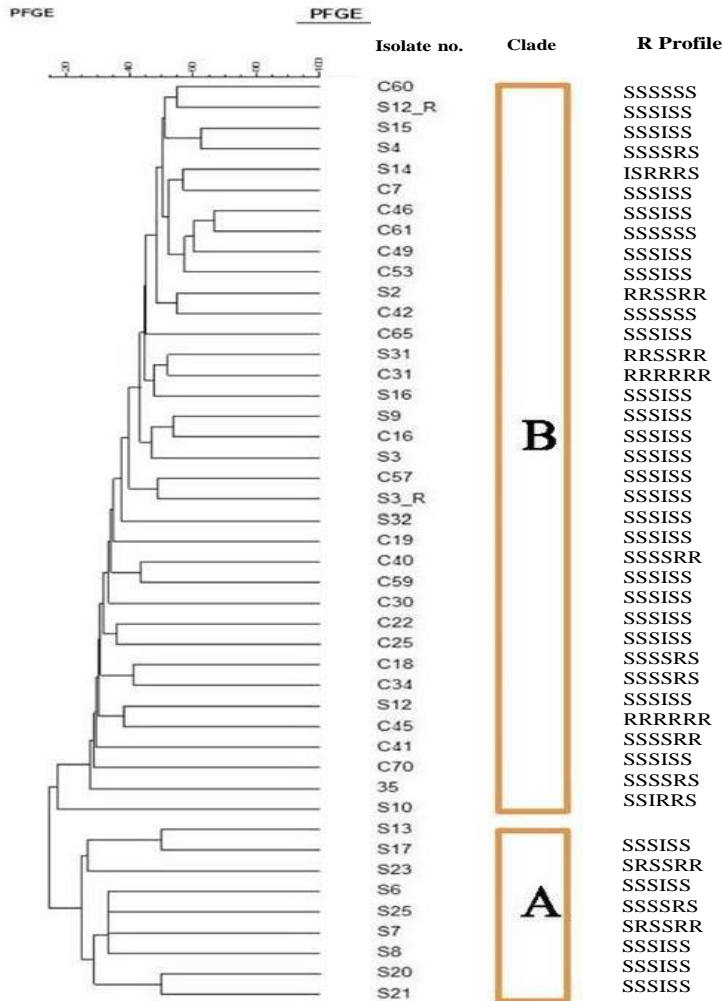


Fig 2: PFGE *SmaI* genotypic types generated from clinical MRSA isolates

The S, I and R (susceptible, intermediate and resistant) indicate resistance or susceptibility to gentamicin, ciprofloxacin, erythromycin, clindamycin, tetracycline and trimethoprim/sulfamethoxazole respectively

Discussion:

This study reports on the prevalence of MRSA from a Ghanaian hospital, with 58 (63%) of the 91 *S. aureus* isolates phenotypically methicillin or oxacillin resistant, and 43 (74%) were genotypically confirmed as MRSA. This figure is relatively high compared to the prevalence of 5.7% (11) in a Ghana study. However studies in Ethiopia, Egypt and Algeria showed an MRSA prevalence of 55.0%, 52.0% and 45.0% respectively in clinical isolates (22).

The use of tetracycline is common in Ghanaian communities, based on

anecdotal evidence and may be obtained over-the-counter, which may partly explain the high resistance to this antibiotic. The resistance level to trimethoprim-sulphamethoxazole was lower in this study compared to resistance levels found in studies in Nigeria (90.9%) (9), Tanzania (50.0%) (23), and Ghana (58.3%) (24). However Egyir *et al* in 2015 reported a low level of resistance (7.0%) to trimethoprim-sulphamethoxazole in Ghana (25). Hence, MRSA from Ghana are likely to be susceptible to trimethoprim-sulphamethoxazole than those from these other countries. None of the isolates was resistant to all antibiotics tested and the

susceptibility of all isolates to linezolid, teicoplanin, tigecycline, fusidic acid and vancomycin shows that these drugs remain tenable alternatives in the treatment of MRSA infections in Ghana. However, the high costs and limited availability of these drugs in Ghana means treatment options for MRSA infections are still limited in Ghana.

Furthermore, the relatively high susceptibility levels of MRSA isolates to the quinolones, ciprofloxacin and moxifloxacin, erythromycin, gentamicin and trimethoprim-sulphamethoxazole indicates that these agents may be relied upon when the first line anti-MRSA antibiotics are not immediately available.

Of the 58 isolates identified as MRSA by phenotypic tests (disc diffusion and MIC), 43 (74.0%) carried the *mecA* gene. Methicillin resistance in staphylococcal strains that do not carry the *mecA* gene may be linked with another mechanism of methicillin resistance such as changes in affinity of penicillin-binding proteins for oxacillin (15). In addition, there are other chromosomally determined components aside *mecA* that are implicated in methicillin resistance. For example, *FemA* and *FemB*, which encode proteins involved in the formation of the pentaglycine side chain of peptidoglycan, influence the methicillin resistance expression level in *S. aureus* (26). Again, methicillin resistance in the *mecA*-negative isolates could be mediated by the *mecC* or *mecB* genes (27).

The frequency of *tetK* gene found in this study (19.0%) is close to that reported in another study in Ghana (16.3%) (28). Tetracycline resistance determinants are common and are usually found in multidrug resistant bacteria (19). *TetK* mediates resistance to tetracycline but not to minocycline, and is a more widespread tetracycline resistance gene than *tetL* and *tetO* which are uncommon (29). The *tetK* and *tetM* genes code for ribosomal target site alteration and/or efflux mechanism, limiting the effectiveness of the drug. The observation that some isolates were resistant and yet

showed no *tetK* genes upon genotypic screening could be due to fact that their resistance to tetracycline may be mediated by other tetracycline resistant genes like *tetM*, which was not investigated in this study. Resistance to tetracycline is frequently due to the acquisition of new genes related to either conjugative plasmids or transposons (19). Some isolates were susceptible to tetracycline by phenotypic testing although they possessed the *tetK* gene, which suggests that the gene may be present but silent or minimally expressed in the absence of selection pressure. This assertion appears more likely given that the use of tetracycline for *S. aureus* infections in hospitals is on the decline in Ghanaian hospitals.

Of the eight isolates resistant to erythromycin and clindamycin (by phenotypic screening), only two possessed *ermC* gene upon molecular analysis. Resistance to erythromycin and clindamycin in the isolates that did not have *ermC* may be alternatively mediated by the *msrA* and *linA* genes respectively. *MsrA* encodes an efflux pump that actively pumps macrolides from the bacterial cell before they can bind their ribosomal target site. This mechanism however does not create resistance to lincosamides (16). *MsrA* and *linA* genes were not investigated in this study.

Clindamycin may be useful even in HA-MRSA when susceptibility testing shows it has activity, given the limited options for MRSA infections in Ghana. However, one major concern regarding the use of clindamycin in MRSA infections is the possible development of resistance in the presence of macrolide inducers such as erythromycin (30). This has resulted in some clinicians avoiding or abandoning the use of clindamycin in staphylococcal infections whenever there is resistance to erythromycin. The 'D-zone' test therefore distinguishes strains with intrinsic genetic possibility of resistance from those that are fully susceptible to clindamycin. None of the isolates tested was positive for inducible clindamycin resistance. Those that did not possess the clindamycin

resistance genes and were susceptible to clindamycin by susceptibility testing can therefore be safely reported as susceptible to clindamycin.

The prevalence of the *aac(6′)-aph(2″)* gene found in this study was 22.0%. Report of a previous study in Ghana showed a prevalence of 17.0% for this gene (25). The presence of the *aac(6′)-aph(2″)* gene in some isolates that showed no resistance to gentamicin implies the gene is not sufficiently expressed in these isolates. Again, some isolates carrying the *aac(6′)-aph(2″)* gene expressed intermediate susceptibility towards gentamicin and the borderline susceptibility in these isolates may be ascribed to the expression of this gene.

lukS/F-PV gene, detected in two (3.0%) of the isolates is commonly associated with community-acquired MRSA (31). Genes encoding PVL, which is a cytotoxin that causes destruction of leucocytes and tissue necrosis, were not frequently encountered until recently, being produced by less than 5% of *S. aureus* strains worldwide. The frequency of PVL-positive *S. aureus* strains associated with clinical infections in England and Wales was reported to be 1.6% by Holmes *et al* (32), while a study in South Africa found it to be 0.3% (12). It is not therefore surprising that just two isolates carried the gene for PVL considering they are clinical isolates. Studies in Ghana however showed PVL prevalence rates of 17.0% (5/30) and 63.8% among hospital *S. aureus* isolates (25, 28). Although PVL genes are mostly associated with community strains of MRSA, data from West and Central Africa showed that no less than 40.0% of clinical methicillin susceptible *S. aureus* (MSSA) isolates in these regions are PVL-positive (7, 13). Thus, the acquisition of *mecA* gene by PVL-positive MSSA and the potential spread of PVL-positive CA-MRSA could pose a challenge in the control of infections in countries with inadequate resources in Africa. There was an insertion of G (8) and an SNP (G→C [429]) in the *lukS/F-PV* gene.

Alpha haemolysin is encoded by *hla*

was found in 5% of the isolates and plays an important role in staphylococcal infections (20). This is in contrast to reports from Uganda (14), United States (33) and Iran (20) where the frequency of *hla* recorded were 100.0%, 100.0% and 93.15% respectively, which suggests that the geographical distribution of this gene may be lower in Ghana. Alpha haemolysin, when secreted by *S. aureus*, integrates into host cell membranes and causes lysis of eukaryotic cells, with erythrocytes being particularly susceptible (34).

None of the isolates harbored the gene for the exfoliative toxin, *eta*. This is consistent with data from another study in Ghana (25). Three SNPs were observed for isolate S15, viz, in the *hla* gene (C→T [12], T→A [15] and T→C [204]). A missense mutation of N41S was observed in the *hla* protein (compared with the *hla* protein of *S. aureus* gb|AIG51324.1). The effects of SNPs at different positions of the codon may affect the expression and functioning of this gene. Alpha haemolysin hyperproduction in *S. aureus* is a multifactorial process affected at both the genomic and transcriptional levels (35). A study conducted by Liang *et al.*, in 2011 identified SNPs in the *hla* gene at positions 2376, 2483 and 2484 from the start codon, associated with alpha toxin hyperproduction (35).

The most resistant isolates against the most commonly prescribed antibiotics such as gentamicin, ciprofloxacin, erythromycin, clindamycin, tetracycline and trimethoprim-sulfamethoxazole belonged to clade B type. Detailed patient demographic data was unavailable, making the discussion of clonal relatedness as well as hospital-associated and community-acquired comparisons challenging.

Conclusion:

In conclusion, this study provides information on the occurrence of MRSA from a major referral hospital in Ghana over a 5-month period. Results indicated a fairly high occurrence of MRSA. Some

isolates carried the *mecA*, *blaZ*, *tetK*, *aac(6′)-aph(2′′)*, *ermC*, *lukS/F-PV* and *hla* genes. The high occurrence of MRSA found in this study is worrying, considering that there are limited treatment options for antibiotic-resistant *S. aureus* in Ghana. There is an urgent need to institute effective surveillance mechanisms to monitor MRSA and implement stringent infection prevention and control programmes to forestall its spread.

Conflict of interest:

Professor Essack is a member of the Global Respiratory Infection Partnership (GRIP) and the Global Analgesic Steering Committee sponsored by unrestricted educational grants from Reckitt and Benckiser.

Acknowledgments:

We acknowledge Noyise Ntshobeni of the Department of Microbiology, Daniel Amoako Gyamfi of the Antimicrobial Research Unit, University of KwaZulu Natal, and Dr John Osei Sekyere of the Department of Medical Microbiology, University of Pretoria, South Africa, for their technical assistance.

This study was supported by the National Research Foundation Incentive Funding for Rated Researchers Grant No.: 85595 awarded to Prof S. Y. Essack and a Masters Scholarship awarded to Jonathan Asante by the College of Health Sciences, University of KwaZulu-Natal. The funders had no role in the study design, data collection and interpretation, or the decision to submit the work for publication.

References:

1. Diekema, D. J., Pfaller, M. A., Shortridge, D., Zervos, M., and Jones, R. N. (eds). Twenty-Year Trends in Antimicrobial Susceptibilities Among *Staphylococcus aureus* From the SENTRY Antimicrobial Surveillance Program. Open Forum Infectious Diseases; 2019: Oxford University Press US.

2. Chambers, H. F. The changing epidemiology of *Staphylococcus aureus*? Emerg Infect Dis. 2001; 7: 178-182.
3. Vandenesch, F., Naimi, T., Enright, M. C., et al. Community-acquired methicillin-resistant *Staphylococcus aureus* carrying Panton-Valentine leukocidin genes: worldwide emergence. Emerg Infect Dis. 2003; 9: 978-984.
4. Moellering Jr, R. C. MRSA: the first half century. J Antimicrob Chemother. 2012; 64: 4-11.
5. Kawamura, K., Kitaoka, K., Kimura, K., et al. Spread of seb-Positive Methicillin-Resistant *Staphylococcus aureus* SCCmec Type II-ST764 Among Elderly Japanese in Nonacute Care Settings. Microb Drug Resist. 2019.
6. Voss, A., Milatovic, D., Wallrauch-Schwarz, C., Rosdahl, V., and Braveny, I. Methicillin-resistant *Staphylococcus aureus* in Europe. Eur J Clin Microbiol Infect Dis. 1994; 13 (1): 50-55.
7. Breurec, S., Zriouil, S., Fall, C., et al. Epidemiology of methicillin-resistant *Staphylococcus aureus* lineages in five major African towns: emergence and spread of atypical clones. Clin Microbiol Infect. 2011; 17 (2): 160-165.
8. Ghebremedhin, B., Olugbosi, M., Raji, A., et al. Emergence of a community-associated methicillin-resistant *Staphylococcus aureus* strain with a unique resistance profile in Southwest Nigeria. J Clin Microbiol. 2009; 47 (9): 2975-2980.
9. Shittu, A. O., Okon, K., Adesida, S., et al. Antibiotic resistance and molecular epidemiology of *Staphylococcus aureus* in Nigeria. BMC Microbiol. 2011;11 (1): 92.
10. Egyir, B., Guardabassi, L., Sørum, M., et al. Molecular epidemiology and antimicrobial susceptibility of clinical *Staphylococcus aureus* from healthcare institutions in Ghana. PLoS One. 2014; 9 (2): 1-7.
11. Egyir, B., Guardabassi, L., Nielsen, S. S., et al. Prevalence of nasal carriage and diversity of *Staphylococcus aureus* among inpatients and hospital staff at Korle Bu Teaching Hospital, Ghana. J Glob Antimicrob Resist. 2013; 1 (4): 189-193.
12. Moodley, A., Oosthuysen, W., Duse, A., Marais, E., Group SAMS. Molecular characterization of clinical methicillin-resistant *Staphylococcus aureus* isolates in South Africa. J Clin Microbiol. 2010; 48 (12): 4608-4611.
13. Schaumburg, F., Ngoa, U. A., Kösters, K., et al. Virulence factors and genotypes of *Staphylococcus aureus* from infection and carriage in Gabon. Clin Microbiol Infect. 2011; 17 (10): 1507-1513.
14. Kateete, D. P., Namazzi, S., Okee, M., et al. High prevalence of methicillin resistant *Staphylococcus aureus* in the surgical units of Mulago hospital in Kampala, Uganda. BMC Res Notes. 2011; 4 (1): 326.

15. Clinical and Laboratory Standards Institute. Performance Standards for antimicrobial testing; twenty-fourth informational supplement. CLSI documents M100-S24. 2014;34:68-75.
16. Lewis, J. S., and Jorgensen, J. H. Inducible clindamycin resistance in staphylococci: should clinicians and microbiologists be concerned? *Clin Infect Dis*. 2005; 40 (2): 280-285.
17. Martineau, F., Picard, F. J., Grenier, L., Roy, P. H., Ouellette, M., and Bergeron, M. G. Multiplex PCR assays for the detection of clinically relevant antibiotic resistance genes in staphylococci isolated from patients infected after cardiac surgery. *J Antimicrob Chemother*. 2000; 46 (4): 527-534.
18. Momtaz, H., Dehkordi, F. S., Rahimi, E., Asgarifar, A., and Momeni, M. Virulence genes and antimicrobial resistance profiles of *Staphylococcus aureus* isolated from chicken meat in Isfahan province, Iran. *J Appl Poult Res*. 2013; 22 (4): 913-921.
19. Ng, L-K., Martin, I., Alfa, M., and Mulvey, M. Multiplex PCR for the detection of tetracycline resistant genes. *Mol Cell Probes*. 2001; 15 (4): 209-215.
20. Alfatemi, S. M. H., Motamedifar, M., Hadi, N., and Saraie, H. S. E. Analysis of virulence genes among methicillin resistant *Staphylococcus aureus* (MRSA) strains. *Jundishapur J Microbiol*. 2014; 7 (6): 1-10.
21. Tenover, F. C., Arbeit, R. D., Goering, R. V., et al. Interpreting chromosomal DNA restriction patterns produced by pulsed-field gel electrophoresis: criteria for bacterial strain typing. *J Clin Microbiol*. 1995; 33 (9): 2233.
22. Falagas, M. E., Karageorgopoulos, D. E., Leptidis, J., and Korbila, I. P. MRSA in Africa: filling the global map of antimicrobial resistance. *PLoS One*. 2013; 8 (7): e68024.
23. Moremi, N., Mshana, S. E., Kamugisha, E., et al. Predominance of methicillin resistant *Staphylococcus aureus*-ST88 and new ST1797 causing wound infection and abscesses. *J Infect Dev Ctries*. 2012; 6 (08): 620-625.
24. Odonkor, S. T., Newman, M. J, and Addo, K. K. Prevalence and antibiotic susceptibility profile of methicillin resistant *Staphylococcus aureus* in Accra, Ghana. *Microbiol Res*. 2012; 3 (20): 84-87.
25. Egyir, B., Guardabassi, L., Monecke, S., Addo, K. K., Newman, M. J, and Larsen, A. R. Methicillin-resistant *Staphylococcus aureus* strains from Ghana include USA300. *J Glob Antimicrob Resist*. 2015; 3 (1): 26-30.
26. Towner, K. J., Talbot, D. C., Curran, R., Webster, C. A., and Humphreys, H. Development and evaluation of a PCR-based immunoassay for the rapid detection of methicillin-resistant *Staphylococcus aureus*. *J Med Microbiol*. 1998; 47 (7): 607-613.
27. Becker, K., van Alen, S., Idelevich, E. A., et al. Plasmid-encoded transferable mecB-mediated methicillin resistance in *Staphylococcus aureus*. *Emerg Infect Dis*. 2018; 24 (2): 242.
28. Kpeli, G., Otchere, I. D., Lamelas, A., et al. Possible healthcare-associated transmission as a cause of secondary infection and population structure of *Staphylococcus aureus* isolates from two wound treatment centres in Ghana. *New Microbe and New Infect*. 2016; 13: 92-101.
29. Warsa, U. C., Nonoyama, M., Ida, T., et al. Detection of *tet* (K) and *tet* (M) in *Staphylococcus aureus* of Asian countries by the polymerase chain reaction. *J Antibiot*. 1996; 49 (11): 1127-1132.
30. Hodille, E., Badiou, C., Bouveyron, C., et al. Clindamycin suppresses virulence expression in inducible clindamycin-resistant *Staphylococcus aureus* strains. *Ann Clin Microbiol Antimicrob*. 2018; 17 (1): 38.
31. Bell, J. M., Turnidge, J. D., and Participants, S. A. High prevalence of oxacillin-resistant *Staphylococcus aureus* isolates from hospitalized patients in Asia-Pacific and South Africa: results from SENTRY antimicrobial surveillance program, 1998-1999. *Antimicrob Agents Chemother*. 2002; 46 (3): 879-881.
32. Holmes, A., Ganner, M., McGuane, S., Pitt, T., Cookson, B., and Kearns, A. *Staphylococcus aureus* isolates carrying Panton-Valentine leucocidin genes in England and Wales: frequency, characterization, and association with clinical disease. *J Clin Microbiol*. 2005; 43 (5): 2384-2490.
33. Shukla, S. K., Karow, M. E., Brady, J. M., et al. Virulence genes and genotypic associations in nasal carriage, community-associated methicillin-susceptible and methicillin-resistant USA400 *Staphylococcus aureus* isolates. *J Clin Microbiol*. 2010; 48 (10): 3582-3592.
34. Dinges, M. M., Orwin, P. M., and Schlievert, P. M. Exotoxins of *Staphylococcus aureus*. *Clin Microbiol Rev*. 2000; 13 (1): 16-34.
35. Liang, X., Hall, J. W., Yang, J., et al. Identification of single nucleotide polymorphisms associated with hyperproduction of alpha-toxin in *Staphylococcus aureus*. *PLoS One*. 2011; 6 (4): e18428.