

www.ajbrui.org

Afr. J. Biomed. Res. Vol. 22 (September, 2019); 315- 323

Research Article

Cytoprotective Potential of *Spondias mombin* fractions on Sodium Arsenite-Induced Haematological, Biochemical and Genotoxic Perturbations in Rats

***Ola-Davies O.E.¹, Ajibade T.O.¹, Samuel E.S.¹ and Adedokun R.A.M.²**

¹*Department of Veterinary Physiology and Biochemistry, Faculty of Veterinary Medicine, University of Ibadan, Ibadan.*

²*Department of Veterinary Medicine, Faculty of Veterinary Medicine, University of Ibadan, Ibadan.*

ABSTRACT

Heavy metals are leading causes of environmental contamination and arsenic (As) is currently one of the most important metal contaminants particularly in the developing countries such as Nigeria. The effects of chromatographic fractions of *Spondias mombin* L. (SM) leaves on sodium arsenite-induced toxicities in male Wistar rats were evaluated. Thirty-five male rats allotted equally into seven groups (A – G): Groups A and B were treated with 0.1 mL 1% dimethylsulphoxide (DMSO) and distilled water respectively, Group C: sodium arsenite (SA) 2.5 mg/kg, Group D: 100 mg/kg ethyl acetate fraction of SM, Group E: 100 mg/kg ethyl acetate fraction of SM and 2.5 mg/kg SA, Group F: 100 mg/kg methanol fraction of SM and SA, Group G: 100 mg/kg methanol fraction. SM was administered orally for 14 days, while SA was administered as a single oral dose on the 14th day of treatment with SM. Blood was taken 24 hours after SA administration and the animals were sacrificed. Phytochemical, haematological, biochemical, histopathological analyses and micronucleated polychromatic erythrocytes (MnPCEs) induction in the bone marrow cells were evaluated at the termination of the experiment. Phytochemical screening revealed alkaloids, tannins, phenols and flavonoids in all the fractions. Ethyl acetate and methanol fractions contained cardiac glycosides and carbohydrates whereas only hexane and ethyl acetate fractions contained steroids. Results showed normocytic hypochromic anaemia, genotoxicity, kidney and perilobular hepatic damage in the group that received SA alone, which were significantly ($p < 0.05$) ameliorated by the fractionated extracts. The PCV, Hb, MCV and MCH values for group G, which was treated with methanol fraction alone were significantly higher ($p < 0.05$) while the differential Lymphocytes and Neutrophils counts were significantly increased ($p < 0.05$) in group D. The changes in the mean values of AST, ALP and BUN for Groups D and G were significantly lower ($p < 0.05$) when compared with group B. In conclusion, the methanol and ethyl acetate fractions of *S. mombin*, exhibited hepatoprotective, nephroprotective and genoprotective properties against sodium arsenite-induced toxicity in Wistar rats.

Keywords: *Spondias mombin*, sodium arsenite, hepatoprotective, genoprotective activities

*Author for correspondence: E-mail: toajibade@gmail.com; Tel. +234 818 194 1873

Received: December 2018; Accepted: February, 2019

Abstracted by:

Bioline International, African Journals online (AJOL), Index Copernicus, African Index Medicus (WHO), Excerpta medica (EMBASE), CAB Abstracts, SCOPUS, Global Health Abstracts, Asian Science Index, Index Veterinarius

INTRODUCTION

Heavy metals rank amongst the most widespread environmental contaminants, which are introduced by natural or anthropogenic processes. Arsenic (As) is currently one of the most important metal contaminants / toxicants, particularly in the developing countries (Berge *et al.*, 2007), including Nigeria (Izah and Srivastav, 2015). Arsenic is present in the environment as a naturally occurring substance or due to contamination from human activity (Gupta *et al.*,

2005; Rana *et al.*, 2010). Arsenic may be found in many foods, including grains, fruits, and vegetables, where it is present as a result of absorption from the soil and water (Yost *et al.*, 2004, Arain *et al.*, 2009). This study focused on inorganic arsenic, which often occurs in excess in the drinking water of millions of people worldwide, and has been previously shown to be a human carcinogen (Person *et al.*, 2015; Muenyi and Ljungman 2015). Sodium arsenite has been proven to be abundant in nature and released into the environment through human activities e.g. agricultural and industrial processes,

pesticides use, metal smelting, electronics manufacturing and mining activities (Chatterjee *et al.*, 1995; Ola-Davies *et al.*, 2013). Man has been exposed to sodium arsenite through different major routes via drinking water, food, dermal and atmosphere (Waalkes *et al.*, 2003). Domestic animals are also at risk of intoxication with this environmental toxicant and carcinogen (NRC, 1999).

Arsenical compounds are environmental toxins with multiple effects in animal and human populations (Liu *et al.*, 2001, Waalkes *et al.*, 2003). The main source of environmental arsenic exposure in most populations is the drinking water in which inorganic form of arsenic predominates (Bates *et al.*, 1992, Pott *et al.*, 2001). The frequent uses of arsenic as herbicides, insecticides, rodenticides, food preservatives, and by product of used fossil fuel are challenging the aquatic environment (Liu *et al.*, 2017). Chronic dermal toxicity, nephrotoxicity, and skin cancer all occur with arsenic exposure (NRC 1999). Arsenic is a multi-site carcinogen in humans, causing tumors in a variety of tissues including lung, skin, and bladder (Waalkes *et al.*, 2003, NRC 1999), arsenic is a multi-site carcinogen in humans, causing tumors in a variety of tissues including lung, skin, and bladder (Waalkes *et al.*, 2003, NRC 1999). Other studies indicate that the kidney, liver, uterus and prostate may also be target sites of arsenic carcinogenesis in humans (NRC 1999).

The search for specific, safe and reliable treatment for arsenic toxicity still continues. The use of plants for healing purposes is very common in developing countries especially in the rural areas; this is probably due to the perceived beneficial and lower side effects profile of natural products that are extracted from plants (Leonardo *et al.*, 2000). Medicinal plants have been identified from indigenous pharmacopeias that have significant healing power (Kayode and Kayode, 2011). However, most medicinal plants are used indiscriminately without knowing their possible adverse effect.

Spondias mombin L. is a member of the family Anacardiaceae with several names. *Spondias mombin* L. synonym *Spondias lutea*, commonly known as hog plum, yellow mombin or ubos. *Spondias mombin*, locally called "atoaa" or "iyeye" in Ashanti and Yoruba respectively, is a deciduous erect tree that grows to 15 - 20 meters tall with a trunk 60-75 cm wide. The plant is found in the tropical Americas, including the West Indies, and has been naturalized in parts of Africa, including Ghana, and some parts of Asia (Burkill, 1985). It is very common in Nigeria, Brazil and several other tropical forests of the world with high genetic variability among populations (Ayoka *et al.*, 2008). The leaves are among the forages given to domestic animals in South Eastern Nigeria, and the young leaves are cooked as green vegetables for human consumption (Ayoka *et al.*, 2008). Medicinally, *S. mombin* leaf is known to reduce anxiety, stop convulsions, calm and sedate, relieve pain, suppress cough, aid digestion and stimulate the uterus (Ademola *et al.*, 2005; Amadi *et al.*, 2007; Corthout *et al.*, 1988). Thus, it has been evaluated as an unconventional source of vitamins A and C (Keshinro, 1985). Other reported pharmacological activities include enzyme inhibition (Coates *et al.*, 1994), anti-free radical, anti-aging and reduced glutathione synthesis (Pauly and Fleury, 2002). It has also been reported to have blood

lipid-lowering activity (Igwe *et al.*, 2008). Previous studies have shown that crude extracts of *S. mombin* leaves ameliorate spermatozoal and epididymal damages associated with arsenic toxicity in Wistar rats (Ola-Davies *et al.*, 2014, Ola-Davies and Ajani 2016).

The study among other reasons is targeted to experiment the protective effects of consumption of chromatographic fractions of *Spondias mombin* in the presence and absence of sodium arsenite.

MATERIALS AND METHODS

Chemicals

Sodium arsenite (0.05 M NaAsO₂, Sigma–Aldrich, USA) was diluted with distilled water to concentrations of 2.5 mg/kg body weight corresponding to 1/10th of the oral LD₅₀ of the salt.

Plant Extraction:

Spondias mombin L. leaves were collected from the botanical garden of the University of Ibadan and authenticated at the Department of Botany, University of Ibadan, Nigeria with voucher no UIH-22424. Leaves of *S. mombin* were air-dried, ground into fine powder and defatted in hexane, and later subjected to cold extraction in 96% ethanol as described by Njar *et al.* (1993). A rotary evaporator was used to concentrate the extract, followed by the use of a temperature-controlled oven set at a temperature of 40°C for complete removal of ethanol from the extract (Njar *et al.*, 1993). Thereafter, the ethanol extract was subjected to fractionation using Vacuum Liquid Chromatography (VLC) technique with varying graded concentrations of hexane, ethyl acetate and methanol. Eluents were collected and spotted on thin layer chromatography aluminum plate GF254 (TLC), subjected to a mobile phase, allowed to dry and observed under ultraviolet (UV) light. Eluents with similar refractive index (Rf) were pooled and used. The extractive values (yield), colors and consistencies of the fractions were recorded.

Fluorescence characteristics of different fractions of *Spondias mombin*:

The different solvent fractions of the *Spondias mombin* leaf extract were exposed to UV light at a wavelength of 365nm. Different characteristic colours were identified and recorded.

Extract preparation:

Extract suspensions were freshly prepared in dimethyl sulfoxide (DMSO), which served as vehicle and negative control. Suspensions were administered orally to the rats at a dose of 100 mg/kg body weight (Odunola and Ola-Davies, 2004). Volumes of extract administered did not exceed 0.2 mL. Prepared suspensions were kept at room temperature in the laboratory.

Qualitative phytochemical analysis:

Hexane, ethylacetate and methanol fractions of *S. mombin* L. extract were screened for alkaloids, flavonoids, phenols, sterols, anthraquinones, saponins, tannins, phlobatanins and cardiac glycosides as described by Sofowora (1993). Saponin

content was evaluated using Frothing technique, alkaloid by Dragendorff and Meyer test, flavonoid by Pew's test, and phenols by Folin-Ciocalteu, while cardiac glycosides were determined by Killer-Killarnis method. Terpenes were determined by Salkowski and Libarman-Burchard's test, while anthraquinones were measured using ammonia as described by Sofowora (1993).

Experimental animals:

Thirty-five male rats (Wistar strain) (225 – 228 g) were obtained from the experimental animal house of the Department of Veterinary Physiology and Biochemistry, Faculty of Veterinary Medicine, University of Ibadan, Ibadan, Nigeria. The animals were healthy and kept in steel laboratory cages (60 × 60 × 50 cm). All animals were kept under controlled conditions of temperature (25 ± 2°C), relative humidity (50 ± 15%) and normal photoperiod (12 hrs light and 12 hrs dark). The animals were fed on a standard rat diet (commercial pellet diet from Kesmac Feed Industry, Ibadan, Oyo State, Nigeria) and given water *ad libitum*.

Experimental protocol:

The thirty-five healthy male rats were grouped into 7 (A to G) in which each group contains 5 rats. Animals were acclimatized for one week before use. The treatment was administered to each group by gastric gavages as follows:

Group A: Received 0.1 mL DMSO (the vehicle) for 14 days.

Group B: Received 0.1 mL of distilled water for 14 days.

Group C: Received 2.5mg/kg body weight NaAsO₂ as a single oral dose equivalent to the 1/10th LD₅₀ of NaAsO₂ (Positive control) on the 14th day.

Group D: Received 2.5mg/kg body weight of ethyl acetate fraction for 14 days.

Group E: Received 100mg/kg body weight of ethyl acetate fraction for 14 days and 2.5 mg/kg body weight NaAsO₂ on the 14th day.

Group F: Received 100 mg/kg body weight of methanol fraction for 14 days and 2.5 mg/kg body weight NaAsO₂ on the 14th day.

Group G: Received 100 mg/kg body weight methanol fraction for 14 days.

Twenty-four hours after the last treatment, blood samples were collected from all the animals after which they were sacrificed by cervical dislocation.

Assessment of haematological parameters:

The rats were anaesthetized using diethyl ether and blood samples collected from the retro-orbital plexus into sterile lithium heparinized sample tubes. Packed cell volume (PCV), haemoglobin concentration (Hb), Red blood cell (RBC) count, White blood cell (WBC) count, mean corpuscular haemoglobin (MCH), Mean corpuscular volume (MCV), Mean corpuscular haemoglobin concentration (MCHC) as well as Platelet (PLT) counts were analyzed using automated analyser, Cell Dyne, model 331430, Abbott laboratories, IL USA.

Assessment of serum biochemical markers:

Blood was collected into sterile sample tubes without anticoagulant, allowed to clot, and separated by centrifuging

at 500 rpm for 10 minutes. Supernatant serum was collected and analysed using specific kits (Randox Laboratories Ltd., United Kingdom) for activities of the enzymes - alanine aminotransferase (ALT), aspartate aminotransferase (AST), alkaline phosphatase (ALP) and gamma glutamic transpeptidase (GGT), using an automated analyzer, ATAC 8000 (Elan Diagnostics, CA USA). Urea and creatinine concentrations were measured using Randox laboratory reagent kits (Randox Laboratories Ltd., United Kingdom). Samples were analysed in triplicate, and the mean values were determined. Total plasma cholesterol concentration was determined according to the method of Meithnin *et al.* (1978). Total protein plasma concentration was measured using the Biuret reaction (Lanzarot *et al.*, 2005), whereas glucose and albumin concentrations were determined by spectrophotometric estimation using the Sigma Diagnostic Kit (Sigma Diagnostics, UK). Globulin concentration was obtained from the difference of total protein and albumin.

Genotoxicity assessment:

The *in vivo* micronucleus assay was employed for the evaluation of *S. mombin* L. leaf fractions on sodium arsenite-induced genotoxicity as described by Holland *et al.* (2008). Bone marrow cells from the femurs of freshly sacrificed rats were flushed with foetal calf serum, and a fine suspension was prepared in a centrifuge tube. Subsequently, the suspension was centrifuged at 1500 rpm for 10min, and a smear made by placing a small drop of the suspension on a clean slide, and air-dried. The slides were then then fixed in methanol and stained with May-Gruenwald stain, for the proper colour differentiation of polychromatic erythrocytes (PCEs) and normochromatic erythrocytes (NCEs), and with Giemsa for micronuclei staining. The smears were mounted using a mountant, dried at room temperature, cleaned and properly coded. The frequencies of micronuclei in the PCEs were estimated by scoring 1000 PCE per animal. Scoring was done by viewing the slides under a microscope at X 100 objective lens.

Histopathology:

The rats were sacrificed by cervical dislocation, and dissected to remove the liver, for preservation in 10 % buffered formalin, dehydration in ethanol (70 to 100 %), clearing in xylene, and subsequent embedding in paraffin. The liver tissue in paraffin was then sectioned, and examined under a light microscope after staining with Haematoxylin and Eosin (Lillie, 1965).

Scoring and Statistical analysis:

Criteria for scoring followed Mac Gregor *et al.*, 1987 and OECD guideline 474. One thousand polychromatic erythrocytes (PCEs) were screened for the presence of micronuclei (MnPCEs) at high magnification. The values were expressed as Mean ± SEM (standard error of mean) and the difference of the means were considered significant at p<0.05. The data generated was analyzed using one-way analysis of variance (ANOVA). SPSS Version 15 for Windows (SPSS Inc, 2006) and Microsoft Excel Professional Plus (Microsoft Corporation, 2007) were used to carry out all procedures

RESULTS

Quantitative phytochemical screening: Table 1 gives Fluorescence under UV Light (365 nm), whereas Table 2 gives colour, consistency and yield of different fractions. Table 3 shows the qualitative phytochemical analysis of various fractions of *S. Mombin* L. leaves, under UV light at 365 nm

Haematology and plasma biochemistry: Table 4 shows the haematological values of PCV, Hb, RBC, WBC, Platelets, Lymphocytes, Neutrophils, Monocytes, Eosinophil, MCV, MCH and MCHC in treated and control rats after the administration of *Spondias mombin* Linn fractions (ethyl acetate / methanol fraction) and sodium arsenite alone or simultaneously. There was no significant difference $p > 0.05$ in PCV, Hb, RBC, WBC, Platelet, Lymphocytes, Neutrophils, Monocytes, Eosinophil, MCV, MCH and MCHC, between the control rats (Groups A and B), as well as those rats treated with sodium arsenite in Groups C, E and F. However, the PCV, Hb, MCV and MCH values for group G, which was treated with methanol fraction alone were significantly higher ($p < 0.05$) while the differential Lymphocyte counts were significantly decreased ($p < 0.05$) in group D.

The serum biochemical values for Total protein (TP), Albumin, Globulin, Albumin: Globulin ratio, AST, ALT, ALP, BUN, Creatinine, Cholesterol, and GGT concentrations are presented in Table 5. There was significant increase between the mean values of TP, globulin, A: G ratio, ALP and BUN ($p < 0.05$) between Group C (Arsenic fed) and group B (control), as shown in Table 5, although there was no significant difference between the mean values of AST, ALT, creatinine, cholesterol and GGT ($p > 0.05$) for the two groups (Table 5). The changes in the mean values of Globulin, AST and ALP for Group D was significantly higher ($p < 0.05$) when compared with groups A and B. Group G was also significantly different ($p < 0.05$) in its mean values for Albumin, A:G ratio, ALT and BUN concentrations when compared to group B.

Genotoxicity: The *in vivo* micronucleus assay was employed for the evaluation of the effects of *S. mombin* L. leaf fractions on sodium arsenite-induced genotoxicity as described by Holland et al. (2008). Genotoxicity, which was observed as a function of the frequency of Micronucleus observed are shown in Table 6. Exposure to sodium arsenite resulted in a

significant increase in the frequency of micronucleated polychromatic erythrocytes (MnPCEs) observed in the rats compared with the control (35.83 ± 1.54 vs 1.40 ± 0.51). There were significant reductions ($p < 0.05$) in MnPCEs levels in rats exposed to ethyl acetate and methanol fractions as compared with the sodium arsenite exposed group. This study also showed that the mean values of the MnPCEs induced for fractions administered rats in groups D and G was not significant ($p > 0.05$) as compared with the control group. However, when sodium arsenite was co-administered with the ethylacetate and methanol fraction in rats of groups E and F, the MnPCEs induction was significantly reduced ($p < 0.05$).

Table 1:

Fluorescence of *Spondias mombin* L. fractions under ultraviolet light

| Fractions | Fluorescence Under UV light (365 nm) |
|------------------------|--------------------------------------|
| Hexane Fraction | Brick Red |
| Ethyl Acetate Fraction | Brown |
| Methanol Fraction | Green |

Table 2:

Colour, consistency and yield of *Spondias mombin* L. fractions

| Fraction | Colour | Consistency | Yield (%) |
|---------------|--------|-------------|-----------|
| Hexane | Green | Pasty | 6.28 |
| Ethyl acetate | Black | Dry | 10.52 |
| Methanol | Brown | Pasty | 8.82 |

Table 3:

Qualitative Phytochemical analysis of various fractions of *Spondias mombin* L. leaves

| Tests | Hexane fraction | Ethyl acetate fraction | Methanol fraction |
|-----------------------|-----------------|------------------------|-------------------|
| Alkaloids | +ve | +ve | +ve |
| Saponins | -ve | -ve | -ve |
| Anthraquinones | -ve | -ve | -ve |
| Cardiac glycosides | -ve | +ve | +ve |
| Tannins | +ve | +ve | +ve |
| Phenols | +ve | +ve | +ve |
| Steroids | +ve | +ve | -ve |
| Flavonoids | +ve | +ve | +ve |
| Carbohydrates | -ve | +ve | +ve |
| Proteins& amino acids | -ve | -ve | -ve |

+ve = Present.., -ve = absent

Table 4:

Haematological parameters of control and rats exposed to sodium arsenite and *Spondias mombin* fractions

| Parameters | Group A | Group B | Group C | Group D | Group E | Group F | Group G |
|---------------------------------|------------|-------------------------|------------|-------------------------|------------|------------|-------------------------|
| PCV (%) | 45.00±0.63 | 44.60±1.03 _a | 46.60±0.51 | 45.40±1.91 | 43.40±0.0 | 45.00±0.55 | 47.60±0.51 _a |
| HB (g/dl) | 14.60±0.40 | 14.52±0.45 _a | 15.20±0.20 | 14.50±0.77 | 14.22±0.30 | 14.92±0.33 | 15.92±0.13 _a |
| RBC (x 10 ⁶ /μL) | 7.39±0.07 | 7.41±0.17 | 7.72±0.10 | 7.68±0.31 | 7.32±0.18 | 7.48±0.15 | 7.41±0.17 |
| MCV (fl) | 60.92±0.91 | 60.16±0.30 _a | 60.38±0.11 | 59.12±0.26 | 59.32±0.76 | 60.18±0.76 | 62.90±1.15 _a |
| MCH (pg) | 19.72±0.55 | 19.58±0.28 _a | 19.66±0.07 | 18.86±0.31 | 19.42±0.16 | 19.94±0.45 | 21.08±0.40 _a |
| MCHC (g/dl) | 29.40±3.18 | 32.52±0.33 | 32.56±0.20 | 31.88±0.43 | 32.76±0.27 | 33.14±0.36 | 32.52±0.33 |
| Platelet (x10 ⁶ /μL) | 1.41±0.27 | 1.46±0.11 | 2.43±0.491 | 1.24±0.25 | 1.53±0.14 | 1.14±0.89 | 1.46±0.11 |
| WBC (x 10 ³ /μL) | 4.95±0.64 | 7.33±1.87 | 10.37±1.37 | 8.86±1.30 | 9.39±1.22 | 7.12± 0.93 | 5.62±0.46 |
| Lymphocytes (%) | 73.20±4.93 | 76.60±3.96 _a | 77.00±1.76 | 60.20±6.80 _a | 82.20±2.42 | 75.80±5.78 | 66.20±2.75 |
| Neutrophils (%) | 22.0±5.32 | 19.8±4.13 | 19.2±1.46 | 37.8±6.80 | 15.8±2.42 | 21.4±5.47 | 29.20±2.15 |
| Monocytes (%) | 2.00±0.63 | 1.60±0.25 | 2.00±0.55 | 0.80±0.37 | 1.20±0.20 | 1.60±0.40 | 1.80±0.58 |
| Eosinophils (%) | 2.80±0.37 | 2.00±0.32 | 1.80±0.37 | 0.80±0.37 | 0.80±0.37 | 1.20±0.20 | 2.80±1.24 |

_{a-c}Test values carrying the same superscript as the control for each parameter are significantly different ($p < 0.05$)

Table 5:

Mean Serum Biochemical Parameters of Experimental Animals

| Parameters | Group A | Group B | Group C | Group D | Group E | Group F | Group G |
|----------------------|-------------|----------------------------|-------------------------|--------------------------|-------------|-------------------------|-------------------------|
| Total Protein(g/dl) | 7.50±0.10 | 6.86±0.17 _{ab} | 8.14±0.19 _b | 6.64±0.29 | 6.62±0.12 | 6.30±0.19 _c | 6.98±0.27 |
| Albumin (g/dl) | 4.58±0.07 | 4.22±0.14 _a | 4.42±0.14 | 4.44±0.14 | 4.42±0.09 | 4.18±0.06 | 4.58±0.17 _b |
| Globulin (g/dl) | 2.92±0.15 | 2.72±0.06 _{abc} | 3.92±0.10 _a | 2.20±0.20 _b | 2.42±0.15 | 2.00±0.20 _c | 2.40±0.13 |
| A:G ratio | 0.60±0.04 | 0.60±0.04 _{ab} | 1.10±0.04 _a | 0.48±0.05 | 0.54±0.04 | 0.48±0.05 | 1.88±0.07 _b |
| AST (i.u/l) | 44.60±1.25 | 44.40±0.87 _a | 43.6±1.60 | 38.00±0.95 _a | 44.80±1.07 | 44.40±0.93 | 44.60±0.93 |
| ALT (i.u/l) | 30.00±0.95 | 28.00±1.48 _a | 26.40±1.91 | 26.00±2.12 | 28.00±0.95 | 29.40±1.12 | 32.80±0.49 _a |
| ALP (i.u/l) | 117.00±4.76 | 122.60±1.03 _{abc} | 78.00±2.92 _a | 90.20±5.64 _b | 110.40±4.65 | 96.2±7.84 _c | 115.40±4.80 |
| GGT (i.u/dl) | 2.02±0.19 | 1.90±0.12 _a | 2.16±0.18 | 1.54±0.08 | 1.34±0.11 | 1.16±0.16 _a | 2.22±0.54 |
| BUN (mg/dl) | 12.40±0.75 | 11.60±0.51 _{abc} | 16.60±0.40 _a | 12.60±0.25 | 12.00±0.32 | 13.20±0.49 _b | 16.40±0.25 _c |
| Creatinine (µg/dl) | 0.62±0.06 | 0.58±0.04 | 0.76±0.04 _a | 0.46±0.04 _{abc} | 0.50±0.05 | 0.56±0.07 | 0.54±0.02 |
| Cholesterol (mg/dl) | 70.80±8.13 | 60.40±12.32 | 57.00±7.37 | 52.20±2.63 | 49.6±3.66 | 45.80±1.32 | 71.80±8.35 |

^{a-d} Test values carrying the same superscript as the control for each parameter are significantly different (P<0.05)

Table 6:

Frequency of micronucleated polychromatic erythrocytes (MnPCE) per 1000PCE of control and treated rats

| Group | MnPCEs /1000PCE |
|---------|--------------------------------|
| Group A | 2.00 ± 0.52 _a |
| Group B | 1.40 ± 0.51 _b |
| Group C | 35.83 ± 1.54 _{abcdef} |
| Group D | 0.33 ± 0.21 _c |
| Group E | 3.00 ± 0.26 _d |
| Group F | 5.67 ± 0.33 _e |
| Group G | 2.33 ± 0.21 _f |

^{a-f} test values carrying the same superscript for the parameter are significantly different (p<0.05)

Histopathology

Histological examination of the liver section of rats in the control and treated groups are shown (Plates 1: A – G). The liver section of rats in groups A and B showed no visible histological changes (Plate 1A&B). The liver of rats administered sodium arsenite showed severe disseminated congestion of vessels and sinusoids, mild periportal inflammation, focal areas of macrovesicular steatosis, disseminated cytoplasmic vacuolation and karyorrhexis of hepatocytes (Plates 1C₁ & 1C₂).

DISCUSSION

Exposure to environmental pollutants constitutes a major threat to animal and human survival in the ever-increasing industrialized world. Arsenic contamination of drinking water from various sources has been reported in many parts of the world including developed and developing countries (Smith and Smith, 2004). Analysis of blood parameters is believed to be relevant indicators in risk evaluation and response to therapy as changes in the haematological system have high predictive value (Olson *et al.*, 2000).

The methanol fraction of *S. mombin* when administered alone induced desirable alterations in the packed cell volume (PCV), haemoglobin concentration (Hb), red blood cell (RBC) counts, mean corpuscular haemoglobin (MCH), mean corpuscular volume (MCV), mean corpuscular haemoglobin concentration (MCHC), as well as platelet (PLT) counts of the treated animals.

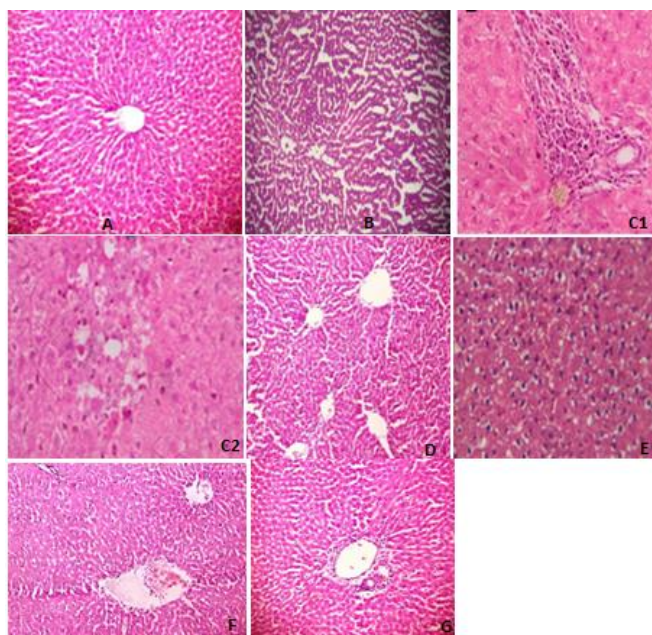


Plate 1

- A: Photomicrograph of the liver of rats exposed to DMSO showing no visible lesion (X400)
- B: Photomicrograph of the liver of rats exposed to Distilled H₂O showing no visible lesion (X400)
- B: Photomicrograph of the liver of rats exposed to NaAsO₂ showing severe disseminated congestion of vessels and sinusoids(X400)
- C₂: Photomicrograph of liver of rats exposed to NaAsO₂ showing mild periportal inflammation, focal areas of macrovesicular steatosis, disseminated cytoplasmic vacuolation and karyorrhexis of hepatocytes (X400)
- D: Photomicrograph of liver of rats exposed to Ethyl acetate fraction showing no visible lesion (X400)
- E: Photomicrograph of liver of rats exposed to Ethyl acetate fraction +NaAsO₂ showing lymphocytic infiltration. (X400)
- F: Photomicrograph of liver of rats exposed to methanol fraction of *S mombin* showing no lesion (X400)
- G: Photomicrograph of liver of rats exposed to methanol fraction of *S mombin* + NaAsO₂ (X400) showing normal central venules, few portal tracts with mild congestion of the portal vein, morphology of the hepatocytes and the sinusoids appear normal and not infiltrated, no pathological lesion seen. (Haematoxylin and Eosin stain).

The increase as shown in this study, revealed the probable capability of the methanol fraction of *S. mombin* to improve anaemic conditions in animals (Blood, 1989). Similarly, the increase in MCV shown agrees with the incapability of the

fractions to induce anaemic condition in animals (Blood, 1989). These beneficial effects of the methanol fraction of *Spondias mombin* L. on the haematological profile may be attributed to the presence of flavonoids, tannins, vitamin C, iron and other substances with antioxidant and erythropoietic stimulatory properties in the plant (Igwe *et al.*, 2010, Njoku *et al.*, 2007), which may help in red cell membrane stabilization (James *et al.*, 2008). The presence of these antioxidant molecules could possibly explain why the red blood cell integrity was generally unaffected by sodium arsenite in the presence of the fraction administration.

Leucocytes are known to increase sharply when inflammation occurs, as one of the first line of defense of the body against infection and stress (Rehman *et al.*, 2016). The oral administration of sodium arsenite caused a significant increase in the lymphocyte counts when compared to the control. The increase in lymphocyte counts following administration of methanol fraction of *Spondia mombin* L. (Group G) depicts the anti-inflammatory and anti-stress properties of the fraction. This result corroborates the report of Swenson and Reece (1993) who reported that toxic plants do not produce a direct effect on WBCs and its functional indices. The percentage increase in neutrophils may be added to the ability of the animals to ingest foreign agents. A similar effect was reported on the use of drugs, for example histamine (Sacher and McPherson, 1991). This study is in agreement with earlier findings of Tang *et al.*, 1997 who showed that treatment with garlic extract improved the activation of natural killer cells T-lymphocytes and also that of Sumiyoshi (1997) who showed that garlic extract stimulates immune functions.

Monitoring of the activities of some clinical chemistry parameters like total protein, albumin, globulin, ALT, AST, ALP and GGT are among the most sensitive tests employed in the detection of acute liver damage, and some herbal medicines have been reported to possess hepatotoxic effect due to elevation of these indices (Ranjna *et al.*, 1999). Total serum protein and albumin are good criteria to assess the function and secretory capacity of the liver (Yakubu *et al.*, 2005). This study showed that there was a significant increase in the albumin, albumin:globulin ratio, and ALT activities when the methanol fraction of *S. Mombin* L. was administered alone compared with distilled water administered group (Group B). However, when administered with sodium arsenite, *S. mombin* caused a significant reduction in these parameters when compared to the control. Several medicinal plants and plant products have been reported to ameliorate sodium arsenite-induced hepatotoxicity. For instance, quercetin, a polyphenolic flavonoidal compound found in large amount in vegetables, fruits and medicinal herbs has been reported to prevent sodium arsenite induced fibrosis in the liver by inhibiting lipid peroxidation, improving antioxidant status and decreasing the activity of ALT and ALP in the serum (Mandal *et al.*, 2006). There are growing evidences that sodium arsenite intoxication can compromise the integrity of the liver in mouse, rat, fish, and goat (Sharma *et al.*, 2009, Yousef *et al.*, 2008, Roy *et al.*, 2009, Srinivas *et al.*, 2007). Moreover, exposure to low level arsenic in drinking water can result in physiological disturbances and hepatocellular carcinoma in man (Hua *et al.*, 2004).

The kidney is the major route for the excretion of arsenic and its metabolites from the body and a major site for the biotransformation of arsenic. As a result, the kidney is highly prone to arsenic toxicity. Increased concentrations of urea and creatinine are considered for investigating drug-induced nephrotoxicity in man and animals (Ali *et al.*, 2001). In this study, arsenite treatment interfered with kidney functions as seen by elevation of urea and creatinine. Urea is a waste product of protein catabolism that can rise when the kidney is defective. In renal disease, serum urea accumulates because the rate of urea production exceeds the rate of its clearance. Exposure to arsenic or its various forms like Arsenic hydride (AsH₃) can lead to induced nephrotoxicity in experimental animals (Kimura *et al.*, 2006; Ayala-Fierro *et al.*, 2000).

Increased urea and creatinine levels observed in the arsenite-exposed group may be an indication of nephrotoxicity by sodium arsenite (Anwar *et al.*, 1999). This is in consonance with the findings of Ola-Davies *et al.* (2013) that arsenite toxicity induces several metabolic disorders including urea and creatinine elevation following proximal tubule damage and glomerular injury respectively. However, pre-treatment with *S. mombin* L. fractions had reversal effects on these parameters. Pre-treatment with ethyl acetate fraction in sodium arsenite exposed rats significantly reduced the elevated urea concentration to near normal in the combined group. Also, co-administration with methanol fraction of *S. mombin* L. significantly decreased ($p < 0.05$) serum urea and creatinine concentrations. This corroborates the reported diuretic potential of the plant in ethno medical practice (Akubue *et al.*, 1983) and the earlier report by Igwe *et al.*, 2011 that ethanol extract of *S. mombin* significantly reduced serum urea and creatinine concentrations. The present study showed the nephroprotective effects of the fractions of *S. mombin* L. leaves in arsenite-induced toxicity although the ethylacetate fraction seems to possess more nephroprotective potentials than the methanol fraction.

Exposure to sodium arsenite resulted in severe disseminated congestion of vessels and sinusoids, mild periportal inflammation, focal areas of macrovesicular steatosis, disseminated cytoplasmic vacuolation and karyorrhexis of hepatocytes (Plates 1C₁ & 1C₂). This is in support of the findings of Jaeschke *et al.* (2002) that observed foci or non-specific hepatitis with scattered foci of cell necrosis accompanying lymphocytic infiltration in pathological hepatic injury. Similar lesions of parenchyma disorganization (Pires-Das-Naves *et al.*, 2004), necrosis and fibrosis in periportal region were similarly observed in arsenic-induced toxicity in rats (Mandal *et al.*, 2006, Ola-Davies *et al.*, 2013). Meanwhile, there were no serious visible lesions in the liver section of rats administered ethyl acetate and methanol fraction (Plates 1D & F). However, mild periportal and diffuse cellular infiltration by mononuclear cells were seen in the liver section of rats in group E (Plate 1E). Arsenic toxicosis is likely to cause these lesions probably due to its ability to trigger production of reactive oxygen species and glutathione depletion thereby inhibiting the activity of enzymes such as superoxide dismutase and catalase. The inhibition of these enzyme activities will lead to alteration in cells intrinsic antioxidant defenses, resulting in

oxidative stress and architecture disruption (Nordenson and Beckman, 1991).

Micronuclei formation has been reported as a predictive index for evaluating the carcinogenic potential of environmental and occupational chemical exposure (Celik *et al.*, 2005). Sodium arsenite has been reported by several authors to induce chromosomal damages (Celik *et al.*, 2005; Ola-Davies *et al.*, 2013). This study shows that sodium arsenite significantly ($p < 0.05$) induces the formation of micronuclei in the bone marrow cells of the experimental animal model (Table 6). This observation is consistent with an earlier observation in our laboratory and those of others on genotoxic potentials of sodium arsenite in the bone marrow cells (Moore *et al.*, 1997; Vaglenovet *et al.*, 2001; Valverdeet *et al.*, 2002; Ola-Davies *et al.*, 2013; Pomaet *et al.*, 2003; Celik *et al.*, 2005). This study also showed that the mean values of the MnPCEs for fractions administered rats in groups D and G were similar to the unexposed control. However, pre-treatment with the ethyl acetate and methanol fractions of *Spondias mombin* L. for 14 days significantly reduced the frequencies of MnPCEs induced indicating that the fractions modulated the clastogenic effects of sodium arsenite (Table 6). This might probably be due to the presence of flavonoids and other antioxidants in the plant, which are known to reduce arsenic toxicity (Njoku, 2007). In this study, sodium arsenite exposure produced pronounced hepatic histopathology evidenced by periportal inflammation, focal areas of macrovesicular steatosis, disseminated cytoplasmic vacuolation and karyorrhexis of hepatocytes. In consonance with the present finding, Bashir *et al.*, (2006), Ola-Davies *et al.* (2013) showed that the liver section of arsenite treated rats, revealed remarkable degenerative alterations. These pathological changes were modulated to moderate extent in pre-treated groups.

In conclusion, the result of this study shows that arsenic toxicity results in the perturbations of haematological, hepatotoxic, nephrotoxic and genotoxic indices while ethyl acetate and methanol fractions of *S. mombin* L. due to their phytochemical constituents confer antioxidative and cytoprotective activities to prevent the adverse toxicokinetics pathway of arsenic toxicosis in biological system.

REFERENCES

- Abad MJ, Bermejo P, Carretero E and Martinez-Acitores C. (1996):** Anti-inflammatory activity of some medical plant extracts from Venezuela. *J Ethnopharmacol*, 55: 63 – 68.
- Abo KA, Ogunleye VO and Ashidi J S. (1999):** Antimicrobial potential of *Spondias mombin*, *Croton zambesicus* and *Zygotritonia crocea*. *Phytother Res* 13: 494 – 497.
- Acharya NA, Deepak M and Shrivastava A. (2008):** Indigenous Herbal Medicines: Tribal Formulations and Traditional Herbal Practices. Aavishkar Publishers Distributor. pp 440-520.
- Ademola IO, Fagbemi BO and Idowu SO. (2005):** Anthelmintic activity of extract of *Spondias mombin* against gastrointestinal nematodes of sheep; studies in vitro and in vivo. *Trop Ani Health Prod* 37: 223 – 235.
- Aiyelaja AA and Bello OA (2006):** Ethnobotanical potentials of common herbs in Nigeria: A case study of Enugu state Educational. *Res Rev* 1: 16-22.
- Akobundu IO. (1987):** Weed Science in the Tropics, Principles and Practices, John Wiley and Sons. pp, 522.
- Akubue PI, Mittal GC and Aguwa CN. (1983):** Preliminary pharmacological study of some Nigerian medicinal plants. *J Ethnopharmacol* 8: 53 – 63.
- Anetor JI, Wanibuchi H and Fukushima S. (2007):** Arsenic exposure and its health effects and risk of cancer in developing countries: micronutrients as host defence. *Asian Pac J Cancer Prev* 8: 13–23.
- Arain MB, Kazi TG, Baig JA, Jamali MK, Afridi HI, Shah AQ, Jalbani N and Sarfraz RA. (2009):** Determination of arsenic levels in lakewater, sediment, and foodstuff from selected area of Sindh, Pakistan: estimation of daily dietary intake. *Food Chem Toxicol* 47: 242-248.
- Ayoka AO, Akomolafe RO, Iwalewa EO, Akanmu MA and Ukponmwan OE. (2006):** Sedative, antiepileptic and antipsychotic effects of *Spondias mombin* L. (Anacardiaceae) in mice and rats. *J Ethnopharmacol* 110: 166 – 175.
- Ayoka AO, Akomolafe RO, Akinsomoye OS and Ukponmwan O.E. (2008)** Medicinal and Economic Value of *Spondias Mombin*. *Afr J Biomed Res* 11: 129 – 136.
- Azaizeh H, Fulder S, Khalil K and Said O. (2003):** Ethnobotanical knowledge of local Arab practitioners in the Middle Eastern region. *Fitoterapia* 74: 98-108.
- Bashir, S., Sharma, Y., Irshad, M., Gupta, S.D., Dogra, T.D (2006):** Arsenic-induced cell death in liver and brain of experimental rats *Basic Clin Pharmacol Toxicol*. 98(1):38-43
- Berg M, Stengel C, Trang PTK, Viet PH, Sampson ML, Leng M, Samreth S and Fredericks D. (2007):** Magnitude of arsenic pollution in the Mekong and Red River Deltas—Cambodia and Vietnam. *Sci Total Environ* 372: 413-425.
- Butler M.S. (2005):** Natural products to Drugs: natural products derived compounds in clinical trials. *Nat Prod Res*. 22:162-195.
- Castro-Gonzalez MI and Mendez-Armenta M. (2008):** Heavy metals: implications associated to fish consumption. *Environ Toxicol Pharmacol*. 26:263–271.
- Celik A, Ogenler O and Comelekoglu U. (2005):** The evaluation of micronucleus frequency by acridine orange fluorescent staining in peripheral blood of rats treated with lead acetate. *Mutagenesis* 20: 411-415.
- Chattopadhyay S, Ghosh S, Debnath J and Ghosh D. (2001):** Protection of Sodium Arsenite-Induced Ovarian Toxicity by Co-administration of L-ascorbate (Vitamin C) in Mature Wistar Strain Rat. *Arch Environ Contam Toxicol* 41:83–89.
- Craig GM, Newman DJ and Snader KM. (1997):** Natural products in drug discovery and development. *J Nat Prod* 60: 52-60.
- Flora SJ and Pachauri V. 2010.** Chelation in metal intoxication. *Inter J Environ Res Pub Health* 7:2745–2788.
- Gilani AH. 2005.** Role of medicinal plants in modern medicine. *Malay J Sci* 24: 1-5.
- Gill LS. 1992.** Ethnomedical uses of plants in Nigeria. Uniben Press. pp, 220.

- Gupta R and Flora SJS. 2005.** Protective value of Aloe vera against some toxic effects of arsenic in rats. *Phytother Res* 19:23-28.
- Harbourne JB. 1983.** *Phytochemical Methods: A guide to modern technique of plants analysis.* Chapman and Hall, pp, 94-103
- Holland, N., Bolognesi, C., Kirsch-Volders, M., Bonassi, S., Zeiger, E., Knasmueller, S. (2008):** The micronucleus assay in human buccal cells as a tool for biomonitoring DNA damage: The HUMN project perspective on current status and knowledge gaps. *Mutat. Res.* 659:93–108
- Howard G. (2003):** Arsenic, drinking-water and health risk substitution in arsenic mitigation: a discussion paper. *World Health Organization*, pp, 23: 203-207.
- Hua C, Shuan FL, Jie L, Bhalchandra AD, Barrett JC and Waalkes MP. (2004):** Chronic Inorganic Arsenic Exposure Induces Hepatic Global and Individual Gene Hypomethylation: Implications for Arsenic Hepatocarcinogenesis. *Carcinogen* 25: 1779-1786.
- Igwe CU, Onwuliri VA, Osuagwu CG, Onyeze GOC and Ojiako OA. (2011):** Biochemical and Haematological Studies on the Ethanol Leaf Extract of *Spondias mombin* Linn. *Biochem Anal Biochem* 1:104.
- Igwe CU, Onyeze GOC, Onwuliri VA, Osuagwu CG and Ojiako OA. (2010):** Evaluation of the Chemical Compositions of the leaf of *Spondias mombin* Linn from Nigeria. *Austral J. Bas Appl Sci* 4: 706-710.
- Izah SC and Srivastav AL. 2015.** Level of arsenic in potable water sources in Nigeria and their potential health impacts: A review. *J Environ Treat Tech* 3: 15-24.
- Jaeschke, H., Gores, G.J., Cederbaum, A.I., Hinson, J.A., Pessayre, D., Lamasters, J.J. (2002). Mechanism of hepatotoxicity. *Toxicol Sci* 65(2):166-176.
- James O and Nnachetam OP. 2008.** Comparative Antioxidant Capacity, Membrane Stabilization, Polyphenol Composition and Cytotoxicity of Stem and Leaf Extracts of *Cissus multistriata*. *Afr J Biotech* 7: 3129-3133.
- Kannan GM and Flora SJ. (2004).** Chronic arsenic poisoning in the rat: treatment with combined administration of succimers and an antioxidant. *Ecotoxicol Environ Safety* 58:37–43.
- Kazeem A, Akinwumi O, Odunola A and Holiness OO. (2011)** The toxicity of methanolic extract of *Icacina trichantha* leaves in Wistar rats. *J. Food Agric Environ* 9: 145-147.
- Kramer A, Mosquera E, Ruiz J and Rodriguez E. (2002):** Ethnobotany and biological activity of plants utilized during pregnancy and childbirth in the Peruvian amazon. *Eme Rain Car* 4: 104-206.
- Lee TC and Ho IC. (1994):** Expression of heme oxygenase in arsenic-resistant human lung adenocarcinoma cells. *Cancer Res* 54: 1660-1664.
- Lee TC, Ko JL and Jan KL. 1989.** Differential cytotoxicity of sodium arsenite in human fibroblasts and Chinese hamster ovary cells. *Toxicol* 56: 289-299.
- Lee TC and Ho IC. 1995.** Modulation of cellular antioxidant defense activities by sodium arsenite in human fibroblasts. *Arch Toxicol* 69: 498-504.
- Lillie, R (1965):** *Histopathologic Technique and Practical Histochemistry* (McGraw-Hill Book Co., New York,
- Liu Q, Chen JP and Zheng YM. (2017):** Arsenic in the Environment Source, Characteristics, and Technologies for Pollution Elimination. In *Handbook of Advanced Industrial and Hazardous Wastes Management.* CRC Press. pp, 255-288).
- Mac Gregor JT, Heddle JA, Hite M, Margolin BH, Ramel C, Salamone MF, Tice RR and Wild D. (1987):** Guidelines for the conduct of micronucleus assays in mammalian bone marrow erythrocytes. *Muta Res* 189:103—112.
- Mandal AK, Subhankar D, Mukul KB, Rohini NC and Nirmalendu D. (2006):** Hepatoprotective Activity of Liposomal Flavonoid against Arsenite-Induced Liver Fibrosis. *JPET* 320:994–1001.
- Moore LE, Smith AH, Hopenhayn-Rich C, Biggs ML, Kalman D and Smith MT. (1997): Micronucleus in exfoliated bladder cells among individual chronically exposed to arsenic in drinking water. *Cancer Epidemiol Biomarkers Prev* 6:31-36.
- Muenyi CS and Ljungman M. (2015)** Arsenic Disruption of DNA Damage Responses—Potential Role in Carcinogenesis and Chemotherapy. *Biomolecules* 5: 2184-2193.
- Njoku PC and Akumefula MI. (2007):** Phytochemical and Nutrient evaluation of *Spondias mombin* leaves. *Pak J Nutr* 6: 613-615.
- Nordenson I and Beckman L. (1991):** Is the genotoxic effect of arsenic mediated by oxygen free radicals? *Hum Heredit* 41: 71-73.
- NRC. 1999. In: NRCR Washington D.C., National Academy Press. pp 1-310.
- Odunola O.A. 2003.** Comparative effects of some local food condiments on sodium arsenite induced clastogenicity. *Afr J Med Med Sci* 32:75-80.
- Odunola OA and Ola-Davies OE. (2004):** Reduction of the clastogenic effect of inorganic arsenic by extracts of some dietary additives. *Bull Sci Asso Nig* 25: 255-259.
- OECD Guideline for testing of chemicals. 1983. Genetic Toxicology: Micronucleus test. pp. 474
- Offiah VN and Anyanwu II. (1989):** Abortifacient activity of an aqueous extract of *Spondias mombin* leaves. *J Ethnopharmacol* 26: 317 – 320.
- Okwu DE. (2001):** Evaluation of Chemical Composition of indigenous spices and flavouring agents. *Glob J Pure Appl Sci* 455-460.
- Ola-Davies OE, Adebisi OE and Ewete A. 2013.** Modulatory effects of ethanol extract of *Spondias mombin* leaves on sodium arsenite induced toxicity. *Trop Vet* 31: 30-41
- Ola-Davies O and Ajani OS. 2016.** Semen characteristics and sperm morphology of *Pistia stratiotes* Linn. (*Araceae*) protected male albino rats (Wistar strain) exposed to sodium arsenite. *J Comp Integr Med* 13: 289-294.
- Ola-Davies OE, Ajani OS and Oyeyemi MO. (2014):** Spermatozoa morphology and characteristics of *Spondias mombin* L. (*Anacardiaceae*) protected male Wistar rat exposed to sodium arsenite. *J. Vet Med. Ani Health* 6: 63-66.
- Ola-Davies O, Ajani OS, Oyeyemi MO and Ekundayo S. (2014b):** Testicular and Epididymal Parameters of *Spondias*

mombin. L. (Anacardiaceae) Protected Male Wistar Rats Exposed to Sodium Arsenite. *GlobVet* 12: 232-236.

Ola-Davies OE, Ajani OS and Oyeyemi MO. (2014a): Spermatozoa morphology and characteristics of *Spondias mombin* L. (Anacardiaceae) protected male Wistar rats exposed to sodium arsenite. *JVetMed Ani Health*6: 63-66.

Person RJ, Ngalame NNO, Makia NL, Bell MW, Waalkes MP and Tokar EJ. (2015): Chronic inorganic arsenic exposure in vitro induces a cancer cell phenotype in human peripheral lung epithelial cells. *Toxicol Appl Pharmacol* 286: 36-43.

Pires Das Neves RN, Carvalho F, Carvalho M, Fernandes E, Soares E, De L Bastos, M and De L Pereira M. (2004): *Toxicol Pathol* 32: 527-535.

Poma A, Pittaluga E and Tucci A. 2003. Lead acetate genotoxicity on human melanoma cells in vitro. *Melan Res* 13: 563-566.

Rana T, Bera KA, Das S, Bhattacharya D, Bandyopadhyay PS, Pan D and Das SK. (2010): Effect of chronic intake of arsenic-contaminated water on blood oxidative stress indices in cattle in an arsenic-affected zone. *Ecotoxicol Environ safety* 73: 1237-1332

Ranjna C. (1999): Practical Clinical Biochemistry Methods and Interpretation 2nd ed P.117. <http://www.alrangelgroup.com/clinicalhematology.htm>

Ravenscroft P, Brammer H, Richards K. 2009. Arsenic pollution: a global synthesis. Wiley- Blackwell Eds.

Roy S, Roy M, Pandey PK and Tiwari SP. (2009): Effects of Tissue Trace Minerals Status and Histopathological Changes in Chronic Arsenicosis in Goats. *VetWorld* 2:8-9.

Sacher RA and McPherson RA. (1991): Widmann's Clinical Interpretation of Laboratory Test. pp, 416-43.

Schmid W. (1975): The Micronucleus Test. *Mutation Res.* 31:9-15.

Sharma A, Mukesh KS, and Madhu K. 2009. Modulatory Role of *Emblica officinalis* Fruit Extract against Arsenic Induced Oxidative Stress in Swiss Albino Mice. *Chemico-Biol Interac* 180:20-30.

Shu Y Z. 1998. Recent natural products based drug development: a pharmaceutical industry perspective. *J Natur Prod* 61: 1053-107.

Sofowora A. 1993. Recent trends in research into African medicinal plants. *J ethnopharmacol* 38: 197-208.

Srinivas SV, Prabhath NA, Raghavender M and Yerramill A. 2007. Effect of Arsenic and Chromium on the Serum Amino-Transferases Activity in Indian Major Carp, Labeorohita. *InterJ Environ Res Pub Health* 4:224-227.

Sumiyoshi H. 1997. New pharmacological activity of garlic and its constituent (review). *Folia Pharmacol Japonica* 110: 93 – 97.

Swenson MJ and Reece OW. 1993. Duke's Physiology of domestic Animals. Comstock Publishing Associates. pp, 312-315

Tang ZZ, Sheng S, Liu X, Jian K, Suin A and Yan M. (1997): Preventive function of garlic on experimental oral pre cancer and its effect on natural killer cells. *Bull Hum Med Univ.* 22: 31246 – 31248

Thayer A. (2003): Bristol-Myers to settle suits. *Chem. Eng News.* 81:6.

Uchendu C and Nwankwo IO. (2005): Spasmogenic activity of butanolic leaf extract of *Spondias mombin* in isolated uterine muscle of the rat: role of calcium. *J Nat Rem* 5(1): 7-14.

Urugulaga I and Laghton F. 2001. Plant polyphenol antioxidants and oxidative stress. *Bio Res* 33:159-165.

Vaglenov A, Greus A, Laltchev S, Petkova V, Pavlova S and **Marcos R. (2001):** Occupational exposure to lead and induction of genetic damage. *Environ Health Perspect* 109:205-298.

Valverde M, Fertoul TI, Diaz- Barriga F, Mejia J and de'Castillo ER. (2002): Genotoxicity induced in CD-1 mice by inhaled lead: differential organ response. *Mutagenesis* 17: 55-61.

World Health Organization. (1991). Traditional medicine and modern health care. Progress report by the Director General, Document A. 44(10): 22 March, WHO, Geneva.

Yakubu MT, Akanji MA, Oladiji AT. (2005): Aphrodisiac potentials of aqueous extract of *Fadogia agrestis* (Schweinf. Ex Heirn) stem in male albino rats. *Asian J Androl* 7:399-404

Yost LJ, Tao SH, Egan SK, Barraj LM, Smith KM, Tsuji JS, **Lowney YW, Schoof RA and Rachman NJ. (2004):** Estimation of dietary intake of inorganic arsenic in US children. *Hum Ecol Risk Asst* 10: 473-483.

Yousef M, El-Demerdash F and Radwan F. (2008): Sodium Arsenite Induced Biochemical Perturbations in Rats: Ameliorating Effect of Curcumin. *Food Chem Toxicol* 46:3506–3511.