

Full Length Research Paper

Population structure and expansion of kuruma shrimp (*Penaeus japonicus*) in the adjacent waters of Taiwan inferred from intron sequences

Ta-Jen Chu¹, Hsien-Lu Haung², Chun-Han Shih³, Feng-Jiau Lin⁴ and Tzong-Der Tzeng^{5*}

¹Department of Leisure and Recreation Management, Chung Hua University, 707 Sec. 2, Wu Fu Road, Hsin Chu 300, Taiwan.

²Department of Nutrition and Health Science, Fooyin University, 151, Chihhsueh Road, Ta-liao, Kaohsiung, Taiwan.

³Department of Leisure Management, Tungnan University, No.152, Sec. 3, Beishen Rd., Shenkeng Dist., New Taipei City 222, Taiwan.

⁴Department of Life Sciences, National Cheng Kung University, Tainan, Taiwan.

⁵Department of Leisure, Recreation and Tourism Management, Shu-Te University, Kaohsiung 824, Taiwan.

Accepted 19 October, 2011

Sequence analyses on the specific intron from the elongation factor-1 α gene were conducted to examine the population genetic structure and expansion of kuruma shrimp (*Penaeus japonicus*) off Taiwan. Five populations including 119 individuals were separately sampled from the north of East China Sea (ECS), west of Taiwan Strait (WTS), east of Taiwan Strait (ETS), South China Sea (SCS) and adjacent waters of Kagoshima (JAN). The gene diversity (h) was high for all populations (99.9%), with values from 99.7% (ETS) to 1. Nucleotide diversity (π) for all populations was 0.0421, with values from 0.0368 (JAN) to 0.0437 (ETS). Neighbor-joining tree and network of all alleles showed no significant genealogical structure. Analyses of molecular variance and F_{ST} also revealed no significant genetic structure among five populations, but the F_{ST} value between ECS and ETS was significant. Fu's F statistics and analysis of mismatch distribution for overall alleles suggested that this species in the studied waters had experienced population expansion.

Key words: Intron of elongation factor-1 α gene, *Penaeus japonicus*, population genetic structure, population expansion.

INTRODUCTION

Understanding the population genetic structure is an important component of successful and sustainable long-term management of fishery resources (Hillis et al., 1996), and recent advances in population genetic (Excoffier et al., 1992) and historical demographic analyses (Fu, 1997; Rogers and Harpending, 1992) can be very helpful in providing valuable and complementary

information on catch and age composition data (Pauly et al., 2002).

Recent researches on population genetic structure have utilized new analytical and technical tools that provide high-resolution genetic information. These tools include polymerase chain reaction (PCR) amplification, sequencing of DNA fragments and the phylogenetic analysis of allelic variants. Many of the data for these studies have come from sequences of mitochondrial genes. However, the analysis of mitochondrial DNA sequence variability is widely recognized as suffering from two main weaknesses. First, the mitochondrial genome is only a single genetic locus. A second problem is that such analyses on mitochondrial DNA sequences allow only the reconstruction of maternal lineages (Wilson et al., 1985).

*Corresponding author. E-mail: tdtzeng@stu.edu.tw. Tel/Fax: +886-7-6158000.

Abbreviations: WTS, West of Taiwan Strait; ECS, East China Sea; JAN, adjacent waters of Kagoshima; ETS, east of Taiwan Strait; SCS, South China Sea.

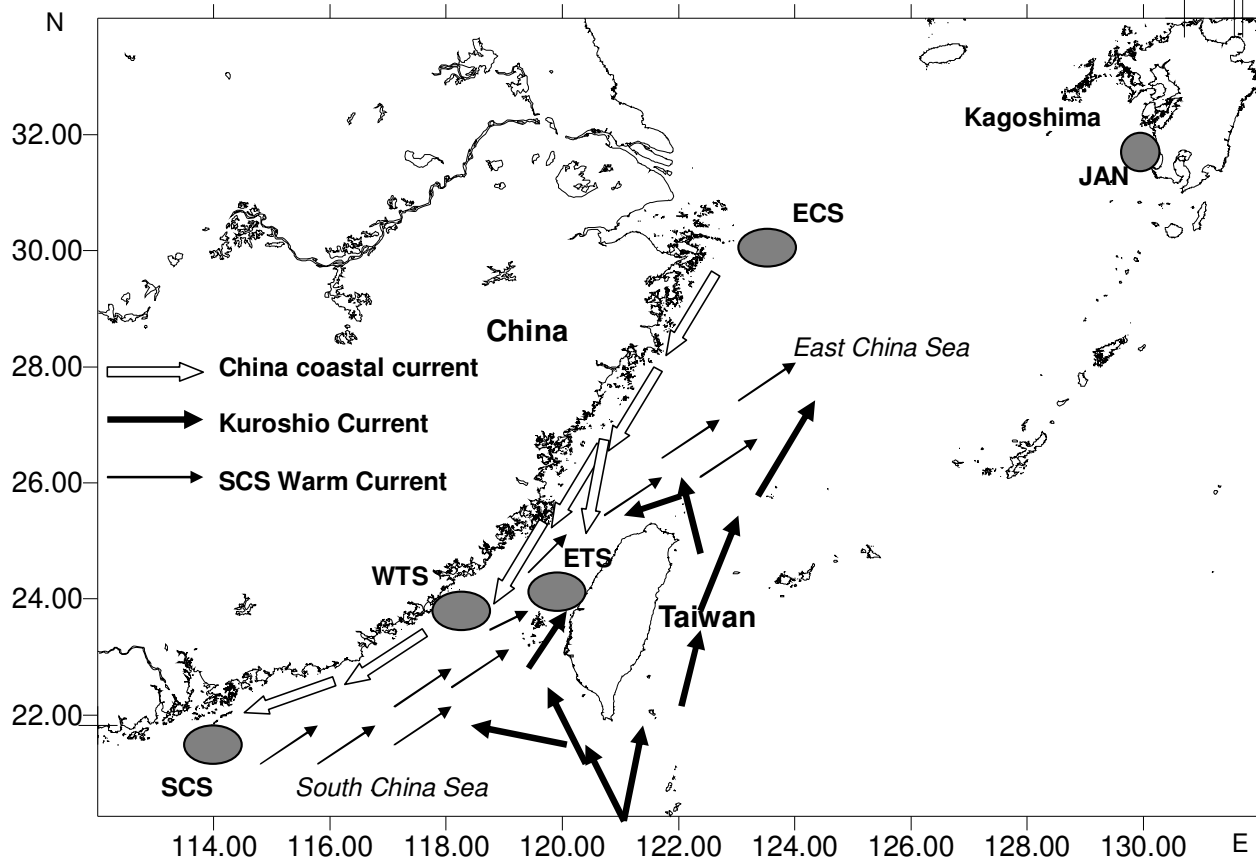


Figure 1. Sampling localities of kuruma shrimp (*Penaeus japonicus*) in the adjacent waters of Taiwan.

The nuclear markers would differ from mitochondrial markers in their rates of evolution and biparental mode of inheritance. The ideal nuclear marker for intraspecific studies would show relatively high levels of neutral variation. One approach to find such markers has been to target intron in highly conserved nuclear genes (Bradley and Hills, 1997). An additional benefit of such intron is that “universal” primers can be designed that will anneal to regions in the highly conserved exons flanking noncoding introns (Palumbi and Baker, 1994). Moreover, the intron sequence could be regarded as haplotype to be analyzed (France et al., 1999). We successfully used the intron sequences from the elongation factor-1 α gene to elucidate the population structure of the sword prawn *Parapenaeopsis hardwickii* from the East China Sea and Taiwan Strait (Tzeng et al., 2008).

The kuruma shrimp (*Penaeus japonicus*) is one of the most important fishery resources of Taiwan. Two morphologically similar but genetically distinct varieties of this species were found (named varieties I and II) and occurred simultaneously in the northern coast of the South China Sea (SCS), Taiwan Strait (TS) and East China Sea (ECS) (Tsoi et al., 2005, 2007; Shih et al., 2011). These two varieties were characterized by diagnostic color banding patterns on the carapace.

Variety I exhibits two characteristic bands extending from the dorsal to the ventral carapace, whereas these two bands do not extend to the lower half of the carapace in variety II. However, the variant I of kuruma shrimp was dominant in the adjacent waters of Taiwan.

In previous studies on the population genetic structure for variety I of kuruma shrimp in the East Asia showed genetically homogeneous (Tsoi et al., 2007; Shih et al., 2011). However, the main molecular markers used in these aforementioned papers were mitochondrial DNA sequences. In the present study, sequence analyses on the intron from the elongation factor-1 α gene were conducted to elucidate the population genetic structure and expansion for variety I of kuruma shrimp in the adjacent waters of Taiwan.

MATERIALS AND METHODS

Sample collection

Five populations including 119 individuals (variety I of kuruma shrimp) were collected from commercial shrimp trawlers (Figure 1, Table 1). They were separately sampled from the north of East China Sea (ECS), west of Taiwan Strait (WTS), east of Taiwan Strait (ETS), South China Sea (SCS) and adjacent waters of Kagoshima

Table 1. Code of sampling site, sample size, number of allele, gene diversity and nucleotide diversity of the kuruma shrimp (*Penaeus japonicus*) in the adjacent waters of Taiwan.

Code	Sampling site	Sampling size	Number of allele	Gene diversity	Nucleotide diversity	Fu's F_s
ECS	East China Sea	32	31	0.998	0.0436	-22.8605**
JAN	Waters off Kagoshima	13	13	1	0.0368	-6.3040**
WTS	West of Taiwan Strait	13	13	1	0.0403	-5.8948**
ETS	East of Taiwan Strait	38	36	0.997	0.0437	-15.5962**
SCS	South China Sea	23	23	1	0.0427	- 8.6135**
Total		119	113	0.999	0.0413	-24.3869**

* $P < 0.05$, ** $P < 0.01$, ^{ns} = Not significant ($P > 0.05$).

(JAN). Specimens were iced or frozen immediately after capture and later kept at -75°C until extracted.

DNA extraction, amplification and sequencing

Total DNA was extracted from frozen muscle tissue using QIAamp Tissue Kit (QIAGEN) and was kept at -20°C until analyses. A fragment of the intron sequence in the elongation factor-1 α gene was amplified using the primers EF3s (5'-GACAAGGCCCT-CCGTCTTCC-3') and EF4s (5'-GGGCACTGTTCCAATACCTC-3') (France et al., 1999). PCR was run on a GeneAmp 2400 thermal cycler (Perkin-Elmer Corp.) with an initial denaturation of 60 s at 94°C , followed by 30 cycles of 15 s at 94°C , 15 s at 53°C , 15 s at 72°C , and finally a 3-min extension at 72°C . PCR products were visualized on an agarose gel and purified using the QIAgen PCR Purification kit. Purified PCR products were ligated into a pGEMT vector, and subsequently transformed with JM109 competent cells (Promega, Madison, USA), following manufacturer's instructions. White clones were selected from the plate. Their plasmids were prepared and then sequenced.

Data analyses

DNA sequences were aligned by ClustalX, version 1.83 (Thompson et al., 1997), then subsequently optimized by eye in BioEdit, version 7.0.5.3 (Hall, 1999). The beginning and end of the intron sequence were confirmed by comparing with published sequence of *Penaeus vannamei* Boone, 1930 (France et al., 1999). All the sequences are shown in Appendix I. The gene diversity (h) and nucleotide diversity (π) (Nei, 1987) in each population were calculated using DnaSP Version 4.10 (Rozas et al., 2003). Nucleotide composition and numbers of variable sites were assessed with ARLEQUIN Version 3.01 (Excoffier et al., 2005). The optimal substitution model for the intron sequences were determined by MEGA 5 (Tamura et al., 2011). The parameter values estimated by MEGA 5 were adopted for the phylogeographic relationship of alleles and the analysis of molecular variances (AMOVA). Phylogeographic analysis was carried out on nucleotide distances by the neighbor-joining (NJ) method implemented in MEGA 5. We used bootstrap analyses with 1,000 replicates to evaluate support for phylogenetic relationships. A network of alleles was also constructed using the median-joining method (Bandelt et al., 1999) in Network Version 4.2.0.1.

To examine whether any two of the populations genetically differed from each other, pair-wise F_{ST} statistics among the 5 populations were estimated and tested using the program, ProSeq (Filatov, 2002). Gene flow (N_m), was estimated using the relationship $N_m = ((1 / F_{ST}) - 1) / 2$. The AMOVA implemented in ARLEQUIN was performed to test the geographic divisions. The significant of these Φ statistics was evaluated by 10000 random permutations of

sequences among populations.

Furthermore, to check for deviations from neutrality, Fu's F_s statistical tests (Fu, 1997) was carried out to assess evidence for population expansion using ARLEQUIN. Meanwhile, the concordance of data with the distribution underlying the expansion model was assessed. Population expansion was investigated by examining the frequency distributions of pair-wise differences between sequences (mismatched distribution) with DnaSP.

RESULTS

The sequence of specific intron allele (246 bp in length) from the elongation factor-1 α gene for each specimen was identified and used for the following analyses. The gene diversity (h) was high for all populations (99.9%), with values from 99.7% (ETS) to 1. Nucleotide diversity (π) was low for all populations (0.0421), with values from 0.0368 (JAN) to 0.0437 (ETS) (Table 1). Among the 119 individuals sequenced, 113 alleles were identified. In total, 88 variable sites, including 37 singletons and 51 parsimoniously informative sites, were observed. The most common allele was shared by 3 individuals from ECS, SCS and WTS populations. Four alleles were separately shared by 2 individuals. All others occurred in only 1 individual. Moreover, the best fit model selected by MEGA 5 was the T92+G+I model with shape parameter of gamma distribution (G)=0.37 and the proportion of invariable sites (I)=0.39; it was used for NJ reconstructions and AMOVA test. Neighbor-joining tree of 113 alleles showed shallow and no significant genealogical branches (Figure 2). The median-joining network for the 113 alleles appeared star-like and showed no notable allele clustering (Figure 3).

The F_{ST} value among all populations showed a non-significant amount of genetic variation ($F_{ST} = 0.0101$, $p = 0.1200$). All F_{ST} values between five populations were not significant except the pair of ECS-ETS (Table 2). Using F_{ST} to estimate gene flow, we obtain $N_m = 24.3954$, a relatively high level of gene flow. The N_m values between all pair-wise comparisons ranged from 8.8229 (ETS-JAN) to ∞ (Table 2). AMOVA of five populations yielded a Φ_{ST} value of 0.00886 ($p = 0.0966$), indicating no significant genealogical structure (Table 3). In addition, Fu's F_s statistical test was performed to determine departure from

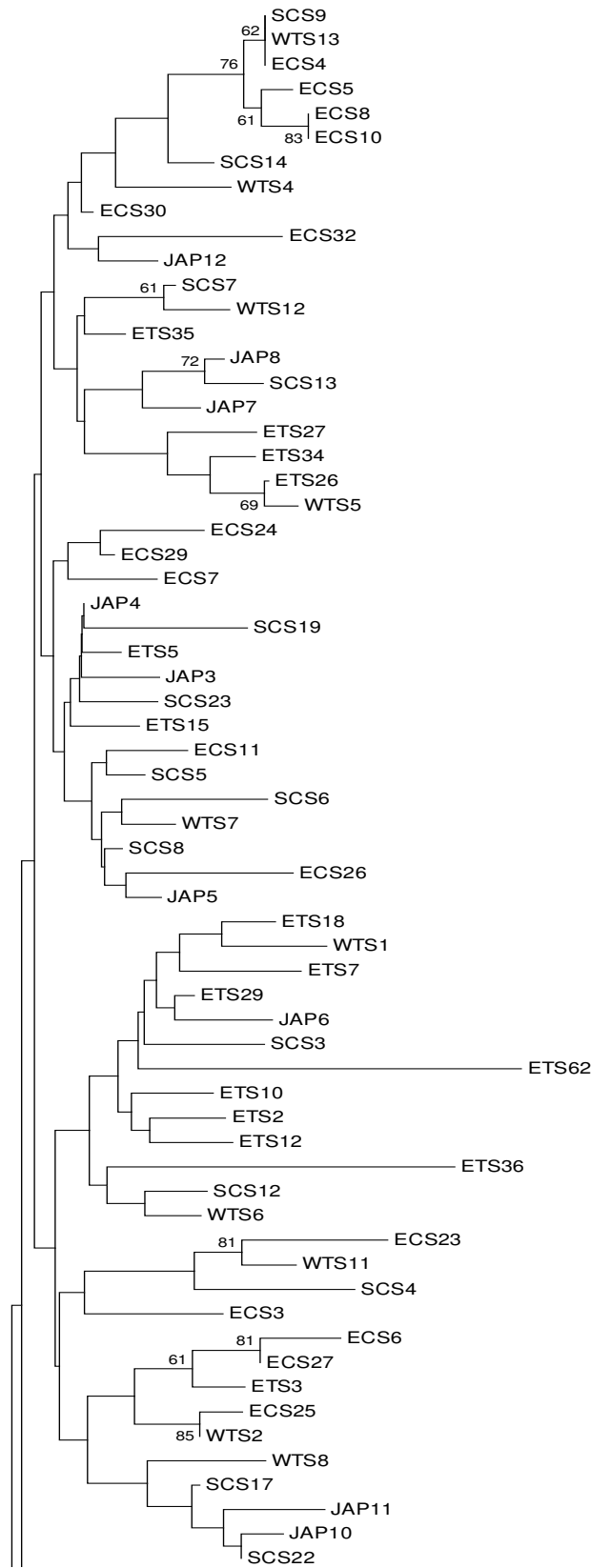


Figure 2. Neighbor-joining tree of alleles of kuruma shrimp (*Penaeus japonicus*) in the adjacent waters of Taiwan. The bootstrap values lower than 60% were not shown.

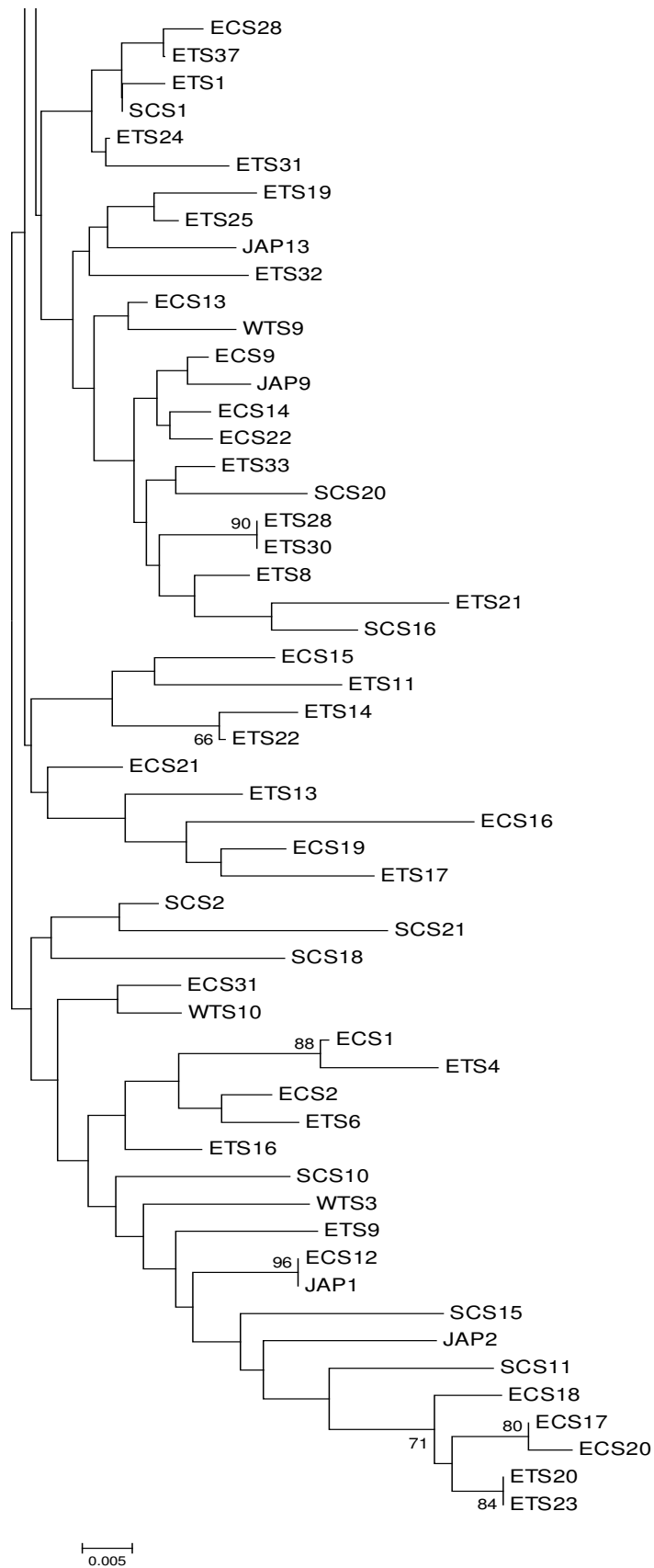


Figure 2. Continue.

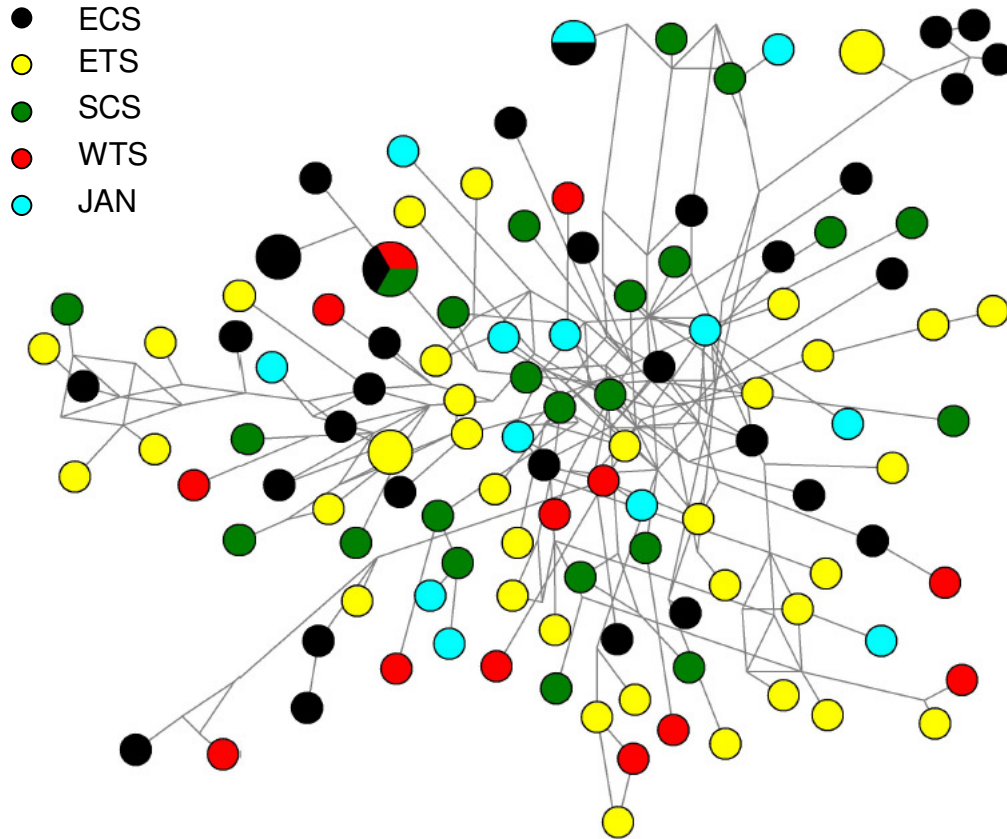


Figure 3. Alleles network of kuruma shrimp (*Penaeus japonicus*) in the adjacent waters of Taiwan. Different symbols represent different sampling areas. The sizes of circles are proportional to frequency. The most common allele was only shared by 3 individuals.

Table 2. F_{ST} (below) and N_m values (above) among populations of *Penaeus japonicus* in the adjacent waters of Taiwan.

Code	ECS	JAN	WTS	ETS	SCS
ECS	-	8.8229	10.4831	10.0305	211.1458
JAN	0.0276 ^{ns}	-	13.8553	10.9031	∞
WTS	0.0233 ^{ns}	0.0177 ^{ns}	-	19.1119	∞
ETS	0.0243 [*]	0.0224 ^{ns}	0.0129 ^{ns}	-	∞
SCS	0.0012 ^{ns}	0 ^{ns}	0 ^{ns}	0 ^{ns}	-

* $P < 0.05$, ^{ns} = Not significant ($P > 0.05$).

Table 3. Result of AMOVA for kuruma shrimp (*Penaeus japonicus*) populations in the adjacent waters of Taiwan.

Source of variation	df	Variance component	Φ -statistics	p
Among populations	4	0.04669	$\Phi_{ST} = 0.00886$	0.0966
Within populations	114	5.22268	-	-
Total	118	5.26937	-	-

neutrality. All F_u 's F_s values were significant for all sampling locations (Table 1). The model of population

expansion could not also be rejected when all populations were combined for F_u 's F_s statistical test. The mismatch

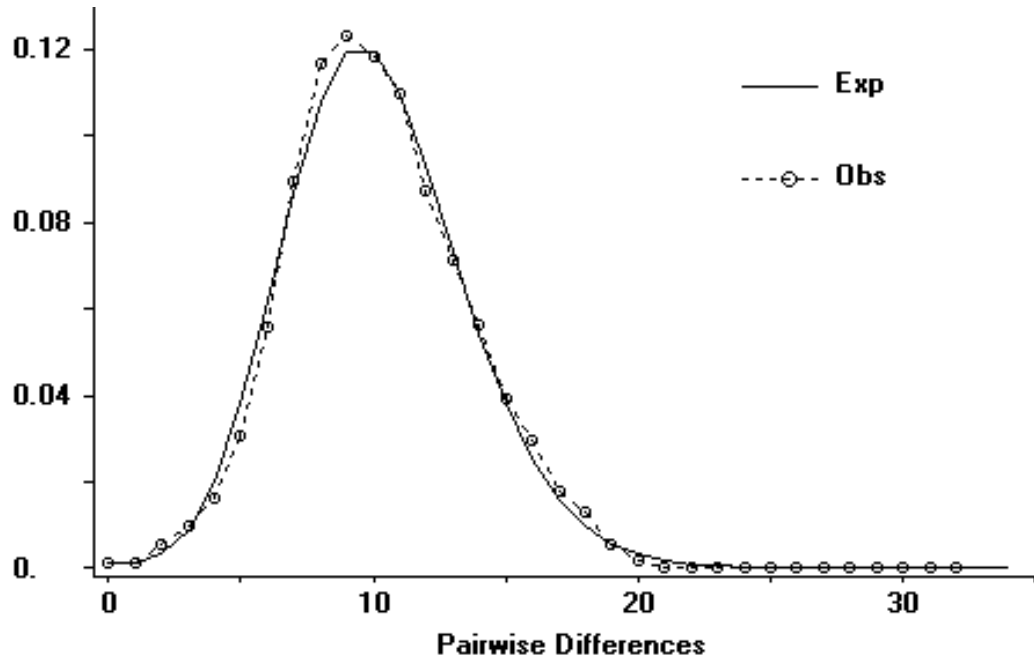


Figure 4. The observed pair-wise differences and the expected mismatch distributions under sudden expansion model of alleles for Kuruma shrimp (*Penaeus japonicus*) in the adjacent waters of Taiwan.

distribution yielded a unimodal distribution, not significantly different (as measure by the sum of squared deviation; $p > 0.05$) from that predicted by the growth expansion model (Figure 4).

DISCUSSION

Neighbor-joining tree and network of all alleles showed no significant genealogical structure, AMOVA did not detect significant differences at all hierarchical levels (Table 3), and most of conventional population F_{ST} statistics were not significant (Table 2), indicating that no significant population structure exists for kuruma shrimp in the adjacent waters of Taiwan. This result is consistent with findings of Tsoi et al. (2007) and shih et al. (2011). Using F_{ST} to estimate gene flow, we obtained $N_m = 24.3954$, a relatively high level of gene flow. In general, if the N_m value is greater than about 5, the gene flow is considered sufficient to maintain a relatively homogeneous gene pool (Slatkin, 1987). The N_m values between all pair-wise comparisons ranged from 8.8229 (ETS-JAN) to ∞ (Table 2), indicating high gene flow among populations reduced genetic heterogeneity.

The kuruma prawns migrate from inshore to offshore as they grow, but the migratory distance is limited. Thus, the dispersal of larvae is the primary source of gene flow, and ocean currents play a major role in the dispersal of this species. The China Coastal Current brings water of low salinity southward along the Chinese coast. When the northeast winter monsoon winds prevail, the cold China

Coastal Current is driven to flow southward into the South China Sea through the Taiwan Strait. When the southwest summer monsoon winds prevail, the southern part of China Coastal Current is reversed and flows northward into the East China Sea. The spawning season of this species lasts from April until October (Yamada et al., 1986). Along the eastern coast of China, kuruma prawn larvae from the north of the East China Sea may be transported to the Taiwan Strait and the north of South China Sea by the China coastal current. This occurrence of kuruma prawn larvae mixed results in homogeneity among the populations from ECS, Taiwan Strait and SCS. The South China Sea warm water dominates the Taiwan Strait (Wang and Chern, 1989) and provides a northbound gene flow from the north of South China Sea to the Taiwan Strait and East China Sea.

Moreover, since the larvae of kuruma shrimps travel on these currents, the connectivity was therefore high among populations within the studied waters. This is also supported by the seasonal variations in the distribution and abundance of copepod (*Calanus sinicus*). The copepod is transported from population centers in the Yellow Sea and the East China Sea into the coastal waters of Taiwan and the northern part of the South China Sea by the China Coastal Current during the northeast monsoon period in winter (Hwang and Wong, 2005). Census of zooplankton communities showed that zooplankton could intrude into the Taiwan Strait from along the China coast by the China coastal current during winter and from the South China Sea by the South China Sea Surface Current during summer (Hsieh et al., 2005).

These results indicate that planktonic larvae in this region may travel great distances, yielding high connectivity between distant regions.

Furthermore, the significant genetic variation between ECS and ETS populations was found (Table 2). Multiple oceanic currents meeting in the east of Taiwan Strait may partly explain this significant genetic difference. During summer, the SCS warm current (see Figure 1) moves northwards from the SCS to ECS (Niino and Emery, 1961) and the Southwest Monsoon drives water masses from Singapore and Vietnam into the Taiwan Strait (Morton and Blackmore, 2001). The main branch of the warm Kuroshio Current flows northward along the east coasts of the Philippines and Taiwan (Chu, 1972). In winter, a small branch could be deflected by Northeast Monsoon to flow through the east of Taiwan Strait (Farris and Wimbush, 1996) but this up-flowing branch is stopped in the Penghu Island in the Taiwan Strait as the deeper waters beyond Penghu prevent this branch from flowing further north (Jan et al., 2002).

The intron sequences revealed high level of gene diversity (99.9%) and the low level of nucleotide diversity (0.0421) (Table 1). This h was higher than one found in Tsoi et al. (2007), but similar to the one found in Shih et al. (2011). Also, the π obtained herein was lower than 0.094 found in Tsoi et al. (2007), but higher than 0.0355 as reported by Shih et al. (2011). The high gene diversity ($h = 0.999$) and the lower nucleotide diversity ($\pi = 0.0421$) suggests the kuruma shrimp had undergone population expansion (Grant and Bowen, 1998), and this result is the same as the one obtained in Shih et al. (2011). In addition, the neutrality of intron sequence was rejected on the basis of Fu's F_s ($F_s = -24.3869$, $P < 0.01$). The statistic is most sensitive to factors such as bottlenecks or population expansion (Fu, 1997). Indeed, significant negative value of the statistic in this study indicated that the kuruma shrimp had experienced population expansion. The unimodal mismatch frequency distribution pattern accorded well the predicted distribution under a model of population expansion (Figure 4) (Rogers and Harpending, 1992). The neighbor-joining tree showed no significant genealogical branch (Figure 2), and this shallow phylogeny is consistent with a population expansion (Slatkin and Hudson, 1991). The median-joining network showed star-like (Figure 3), and this also suggested that the kuruma shrimp from the studied waters underwent recent population expansion.

Conclusion

Although, two additional populations from WTS and JAN were collected and intron sequences were analyzed, our results indicated that all variant I populations of kuruma shrimp in the ECS, Taiwan Strait and the SCS shared the same gene pool, which was consistent with the report of Shih et al. (2011). However, the gene diversity ($h = 0.999$) and nucleotide diversity ($\pi = 0.0421$) obtained herein from

intron sequence of 246 bp were higher than those obtained from mtDNA sequences (Shih et al., 2011), and this indicated that high variations of this intron sequence were also proper to elucidate the population structure and historical demography.

ACKNOWLEDGEMENTS

We express our profound gratitude for the funding support by a grant (NSC97-2313-B-336-001) from the National Science Council of Taiwan. The authors are also grateful to the reviewers' critical comments on the manuscript.

REFERENCES

- Bandelt HJ, Forster P, Rohlf A (1999). Median-joining networks for inferring intraspecific phylogenies. *Mol. Biol. Evol.* 16: 37-48.
- Bradley RD, Hills DM (1997). Recombinant DNA sequences generated by PCR amplification. *Mol. Biol. Evol.* 14: 592-593.
- Chu TY (1972). A study on the water exchange between Pacific Ocean and the South China Sea. *Acta Ocean. Taiwanica*, 2: 11-24.
- Excoffier L, Smouse PE, Quattro JM (1992). Analysis of molecular variance inferred from metric distances among DNA haplotypes: application to human mitochondrial DNA restriction data. *Genetics*, 131: 479-491.
- Excoffier L, Laval G, Schneider S (2005). Arlequin ver. 3.0: an integrated software package for population genetics data analysis. *Evol. Bioinform. Online*, 1: 47-50.
- Farris A, Wimbush M (1996). Wind-induced Kuroshio intrusion into the South China Sea. *J. Oceanogr.* 52: 771-784.
- Filatov DA (2002). ProSeq: a software for preparation and evolutionary analysis of DNA sequence data sets. *Mol. Ecol. note*, 2: 621-624.
- France SC, Tachino Jr. N, Duda TF, Shleser RA, Palumbi SR (1999). Intraspecific genetic diversity in the marine shrimp *Penaeus vannamei*: multiple polymorphic elongation factor 1- α loci revealed by intron sequencing. *Mar. Biotechnol.* 1: 262-268.
- Fu YX (1997). Statistical tests of neutrality of mutations against population growth, hitchhiking and background selection. *Genetics*, 147: 915-925.
- Grant WS, Bowen BW (1998). Shallow population histories in deep evolutionary lineages of marine fishes: insights from sardines and anchovies and lessons for conservation. *J. Hered.* 89: 415-426.
- Hall TA (1999). BioEdit: a user-friendly biological sequence alignment editor and analysis program for Windows 95/98/NT. *Nucleic Acids Symp. Ser.* 41: 95-98.
- Hillis DM, Mable BK, Moritz C (1996). *Molecular Systematics*. Sunderland, MA: Sinauer Associates.
- Hsieh C, Chen CS, Chiu TS (2005). Composition and abundance of copepods and ichthyoplankton in Taiwan Strait (western North Pacific) are influenced by seasonal monsoons. *Mar. Freshwater Res.* 56(2): 153-161.
- Hwang JS, Wong CK (2005). The China Coastal Current as a driving force for transporting *Calanus sinicus* (Copepoda: Calanoida) from its population centers to waters off Taiwan and Hong Kong during the winter northeast monsoon period. *J. Plankton. Res.* 27(2): 205-210.
- Jan S, Wang J, Chern CS, Chao SY (2002). Seasonal variation of the circulation in the Taiwan Strait. *J. Mar. Syst.* 35: 249-268.
- Morton B, Blackmore G (2001). South China Sea. *Mar. Pollut. Bull.* 42: 1236-1263.
- Nei M (1987). *Molecular Evolutionary Genetics*. Columbia University Press, New York.
- Niino H, Emery KO (1961). Sediments of shallow portions of East China Sea and South China Sea. *Geol. Soc. Am. Bull.* 72: 731-762.
- Pauly D, Christensen V, Guenette S, Pitcher TJ, Rashid-Sumaila U, Walters CJ, Watson R, Zeller D (2002). Towards sustainability in world fisheries. *Nature*, 418: 689-695.

- Palumbi SR, Baker CS (1994). Contrasting population structure from nuclear intron sequences and mtDNA of humpback whales. *Mol. Biol. Evol.* 11: 426-435.
- Rogers AR, Harpending H (1992). Population growth makes waves in the distribution of pairwise genetic differences. *Mol. Biol. Evol.* 9: 552-569.
- Rozas J, Sanchez-DelBarrio JC, Messeguer X, Rozas R (2003). DnaSP, DNA polymorphism analyses by the coalescent and other methods. *Bioinformatics*, 19: 2496-2497.
- Shih CH, Haung HL, Chu TJ, Lee YC, Wang CM, Tzeng TD (2011). Genetic diversity and historical demography of kuruma shrimp (*Penaeus japonicus*) species complex off China based on mitochondrial DNA analysis. *Afr. J. Biotechnol.* 10(7): 1065-1072.
- Slatkin M (1987). Gene flow and the geographic structure of natural populations. *Science*, 236: 787-792.
- Slatkin M, Hudson RR (1991). Pairwise comparisons of mitochondrial DNA sequences in stable and exponentially growing populations. *Genetics*, 129: 555-562.
- Tamura K, Peterson D, Peterson N, Stecher G, Nei M, Kumar S (2011). MEGA5: Molecular Evolutionary Genetics Analysis using Maximum Likelihood, Evolutionary Distance, and Maximum Parsimony Methods. *Mol. Biol. Evol.* (In press).
- Thompson JD, Gibson TJ, Plewniak F, Jeanmougin F, Higgins DJ (1997). The CLUSTAL_X windows interface: flexible strategies for multiple sequence alignment aided by quality analysis tools. *Nucleic Acids Res.* 24: 4876-4882.
- Tsoi KH, Wang ZY, Chu KH (2005). Genetic divergence between two morphologically similar varieties of the kuruma shrimp *Penaeus japonicus*. *Mar. Biol.* 147: 367-379.
- Tsoi KH, Chan TY, Chu KH (2007). Molecular population structure of the kuruma shrimp *Penaeus japonicus* species complex in western Pacific. *Mar. Biol.* 150: 1345-1364.
- Tzeng TD, Wang D, Haung HL, Yeh SY (2008). Population structure in the sword prawn (*Parapenaeopsis hardwickii*) from the East China Sea and Taiwan Strait Inferred from intron sequences. *J. Crustacean. Biol.* 28(2): 234-239.
- Wang J, Chern CS (1989). On the Kuroshio branch in the Taiwan Strait during wintertime. *Prog. Oceanogr.* 21: 469-491.
- Wilson AC, Cann RL, Carr SM, George M, Gyllensten UB, Helm-Bychowski K, Higuchi RG, Palumbi SR, Prager EM, Sage RD, Stoneking M (1985). Mitochondrial DNA and two perspectives on evolutionary genetics. *Biol. J. Linn. Soc.* 26: 375-400.
- Yamada U, Tagawa M, Kishida S, Honjo K (1986). Fishes of the East China Sea and the Yellow Sea. Contributions from the Seikai Regional Fisheries Research Laboratory, No. 422.

GCCTAAGGTA GATTGAACCA AGTTTTGTTT TGCCAATTA
#WTS5 GACAAGGCC TCCGTCTTCC CCTTCAGGTA AGCATCGTCA AGGCTTGATT TTTATTACTG ATTTTGTTAA ATGTAGTTGC TAATGTAAT
GCCTAAAGTA GATTGAACCA AGTTTTGTTT TGCCAATTA
#WTS6 GACAAGGCC TCCGTCTTCC CCTTCAGGTA AGCATCGTCA AGGCTTGATT TTTATTACTA ATTTTGTTAA ATCTAGTTGA TAATGTAAT
GCCTAAAGTA GATTGAACCA AGTTTTGTTT TGCCAAGTAA
#WTS7 GACAAGGCC TCCGTCTTCC CCTTCAGGTA AGCATCGTCA AGGCTTGATT TTTATTACTA ATTTTGTTAA ATGTAGTTGC TAATGTAAT
GCCTAAAGTA GATTGAACCA AGTTTTGTTT TGACAAGTAA
#WTS8 GACAAGGCC TCCGTCTTCC CCTTCAGGTA AGCATCGTCA AGGCTTGATT TTTATTACTA ATTTTGTTAA ATGTAGTTGC TAATGTAAT
GCCTAAAGTA GATTGAACCA AGTTTTGTTT TGCCAATTA
#WTS9 GACAAGGCC TCCGTCTTCC CCTTCAGGTA AGCATCGTCA AGGCTTGATT TTTATTACTA ATTTTGTTAA ATCTAGTTGC TGATGTAAT
GCCTAAAGTA GATTGAACCA AGTTTTGTTT TGGCAAGTAA
#WTS10 GACAAGGCC TCCGTCTTCC CCTTCAGGTA AGCATCGTCA AGGCTTGATT TTTATTAATG ATTTTGTTAA ATGTAGTTGC TAATGTAAT
GCCTAAAGTA GATTGAACCA AGTTTTGTTT TGCTAAGTAA
#WTS11 GACAAGGCC TCCGTCTTCC CCTTCAGGTA AGCATCGTCA AGGCTTGATT TTTATTACTA ATTTTGTTAA ATGTAATTGC TAATGTAAT
GCCTAAAGTA GATTGAACCA AGTTTTGTTT TGCCAAGTAA
#WTS12 GACAAGGCC TCCGTCTTCC CCTTCAGGTA AGCATCGTCA AGGCTTGATT TTTATTACTA ATTTTGTTAA ATGTAGTTGC TAATATAAT
GCCTAAAGTA GATTGAACCA AGTTTTGTTT TGCTAAGTAA
#WTS13 GACAAGGCC TCCGTCTTCC CCTTCAGGTA AGCATCGTCA AGGCTTGATT TTTATTACTA ATTTTGTTAA ATGTAGTTGC TAATATAAT
GCCTAAAGTA GATTGAACCA AGTTTTGTTT TGCTAAGTAA
#ECS1 ATGTAACGAA AGGATAGTTT CTGCTGCAGT AATTCCAATT TCCAAATGA GGTATTAATG TGATTTTCT TTTCTTGAG GACGTATACA
AGATTGGAGG TATTGGAACA GTGCC
#ECS2 ATGTAACGAA AGGATAGTTT CTGCTGCAGT AATTCCAATT TCCAATATGA GGTACTAATG TGGTCTTCT TTTCTTGAG GACGTATACA
AGATTGGAGG TATTGGAACA GTGCC
#ECS3 ATATAACGAA AGGATAGTTT CTGCTGCAGT AATCCCATT TCCAAATGA GGTACTAATG TGGTCTTCT TTTCTTGAG GACGTATACA
AGATTGGAGG TATTGGAACA GTGCC
#ECS4 ATGTAACGAA AGGCTAGTTT CTGCTGCAGT AATTGCTATT TCCAATACGA GGTACTAATG TGGTCTTCT TTTCTTGAG GACGTATACA
AGATTGGAGG TATTGGAACA GTGCC
#ECS5 ATGTAACGAA AGGCTAGTTT CTGCTGCAGT AATTGCTATT TCCAATACGA GGTACTAATG TGGTCTTCT TTTCTTGAG GACGTATACA
AGATTGGAGG TATTGGAACA GTGCC
#ECS6 ATGTAACGAA AGGATAGTTT CTGCTGCAGT AATCCCATT TCCAAATGA TATTAATG TGGTCTTCT TTTCTTGAG GACGTATACA
AGATTGGAGG TATTGGAACA GTGCC
#ECS7 ATGTAACGAA AGGCTAGTTT CTGCTGCAGT AATCCATT TCCAAATGA GGTACTAATG TGGTCTTCT TTTCTTGAG GACGTATACA
AGATTGGAGG TATTGGAACA GTGCC
#ECS8 ATGTAACGAA AGGCTAGTTT CTGCTGCAGT AATTGCTATT TCCAATACGA GGTACTAATG TGGTCTTCT TTTCTTGAG GACGTATACA
AGATTGTAGG TATTGGAACA GTGCC
#ECS9 ATGTAACGAA AGGATAGTTT CTGCTGCAGT AATTCCAATT TCCAATATGA GGTACTAATG TGGTCTTCT TTTCTTGAG GACGTATACA
AGATTGGAGG TATTGGAACA GTGCC
#ECS10 ATGTAACGAA AGGCTAGTTT CTGCTGCAGT AATTGCTATT TCCAATACGA GGTACTAATG TGGTCTTCT TTTCTTGAG GACGTATACA
AGATTGTAGG TATTGGAACA GTGCC
#ECS11 ATGTAACGAA AGGATAGTTT CTGCTGCAGT AATTGCTATT TCCAAATGA GGTACTAATG TGGTCTTCT TTTTGTAG GATGTATACA
AGATTGGAGG TATTGGAACA GTGCC
#ECS12 ATGTAACGAA AGGCTAGTTT CTGCTGCAGT AATTGCTATT TCCAAATGA GGTACTAATG TGGTCTTCT TTTCTTGAG GACGTATACA
AGATTGGAGG TATTGGAACA GTGCC
#ECS13 ATGTAACGAA AGGATAGTTT CTGCTGCAGT AATCCATT TCCAAATGA GGTACTAATG TGGTCTTCT TTTCTTGAG GACGTATACA
AGATTGGAGG TATTGGAACA GTGCC
#ECS14 ATGTAACGAA AGGATAGTTT CTGCTGCAGT AATTCCAATT TCCAATATGA GGTACTAATG TGGTCTTCT TTTCTTGAG GACGTATACA
AGATTGGAGG TATTGGAACA GTGCC
#ECS15 ATGTAACAAA AGGATAATTT CTGCTGCAGT AATTGCTATT TCCAAATGA GGTACTAATG TGGTCTTCT TTTCTTGAG GACGTATACA
AGATTGGAGG TATTGGAACA GTGCC
#ECS16 ATGTAACGAA AGGATAGTTT CTGCTGCAGT TATTCCAATT CCAATACGA GGTACTAATG TGGTCTTCT TTTCTTGAG GACGTATACA
AGATTGGAGG TATTGGAACA GTGCC
#ECS17 ATGTAACGAA AGGATAGTTT CTGCTGCAGT AATTCCAATT TCCAATATGA GGTACTAATG TGGTCTTCT TTTCTTGAG GACGTATACA
AGATTGGAGG TATTGGAACA GTGCC
#ECS18 ATGTAAGGAA AGGATAGTTT CTGCTGCAGT AATTCCAATT TCCAATATGA GGTACTAATG TGGTCTTCT TTTCTTGAG GACGTATACA
AGATTGGAGG TATTGGAACA GTGCC
#ECS19 ATGTAACGAA AGGATAGTTT CTGCTGCAGT AATTGCTATT TCCAAATGA GGTACTAATG TGGTCTTCT TTTCTTGAG GACGTATACA
AGATTGGAGG TATTGGAACA GTGCC
#ECS20 ATGTAACGAA AGGATAGTTT CTGCTGCAGT AATTCCAATT TCCAATATGA GGTACTAATG TGGTCTTCT TTTCTTGAG GACGTATACA
AGATTGGAGG TATTGGAACA GTGCC
#ECS21 ATGTAACGAA AGGATAGTTT CTGCTGCAGT AATTGCTATT TCCAAATGA GGTACTAATG TGGTCTTCT TTTCTTGAG GACGTATACA
AGATTGGAGG TATTGGAACA GTGCC
#ECS22 ATGTAACGAA AGGATAGTTT CTGCTGCAGT AATTCCAATT TCCAATATGA GGTACTAATG TGGTCTTCT TTTCTTGAG GACGTATACA
AGATTGGAGG TATTGGAACA GTGCC
#ECS23 ATGTAATGAA AGGATAGTTT CTGCTGCAGT AATCCCATT TCAAAAACGA GGTATTAATG TGGTCTTCT TTTCTTGAG GACGTATACA
AGATTGGAGG TATTGGAACA GTGCC
#ECS24 ATGTAACGAA AGGATAGTTT CTGCTGCAGT AATTGCTATT TCCAAATGA GGTATTAATG TGGTCTTCT TTTCTTGAG GACGTATACA
AGATTGGAGG TATTGGAACA GTGCC
#ECS25 CTGTAACGAA AGGATAGTTT CTGCTGCAGT AATTGCTATT TCCAAATGA TATTAATG TGGTCTTCT TTTCTTGAG GACGTATACA
AGATTGGAGG TATTGGAACA GTGCC
#ECS26 ACGTAACGAA AGGATAGTTT CTGCTGCAGT AATTGCCATT TCCAAATGA GGTACTAATG TGGTCTTCT TTTCTTATAG GATGTATACA
AGATTGGAGG TATTGGAACA GTGCC
#ECS27 ATGTAACGAA AGGATAGTTT CTGCTGCAGT AATCCCATT TCCAAATGA TATTAATG TGGTCTTCT TTTCTTGAG GACGTATACA
AGATTGGAGG TATTGGAACA GTGCC
#ECS28 ATGTAACGAA AGGATAGTTT CTGCTGCAGT AATTGCTATT TCCAAATGA GGTACTAATA TGGTCTTCT TTTCTTGAG GACGTATACA

AGATTGGAGG TATTGGAACA GTGCCC
#SCS20 ATGTAACGAA AGGATAGTTT CTGCTGCAGT AATTCCAATT TCCAATATGA TGTACTAATG TGGTATTCCT TTTCTTGCAG GACGTATACA
AGATTGGAGG TATTGGAACA GTGCCC
#SCS21 ATGTAACGAA AGGATAGTTT CTGCTGCAGT AATTGCTATT TCCAAAATGA GGTACTAATG TGGTCTTCCT TTTCTTGCAG GACGTATACA
AGATTGGAGG TATTGGAACA GTGCCC
#SCS22 ATGTAACGAA AGGATAGTTT CTGCTGCAGT TATTCCTATT TCCAAAATGA TGTATTAATG TGGTCTTCCT TTTCTTGTAG GACGTATACA
AGATTGGAGG TATTGGAACA GTGCCC
#SCS23 ATGTAACGAA AGGATAGTTT CTGCTGCAGT AATTGCTATT TCCAAAATGA GGTACTAATG TGGTCTTCCT TTTCTTGCAG GACGTATACA
AGATTGGAGG TATTGGAACA GTGCCC
#WTS1 ATGTAACGAA AGGATAGTTT CTGCTGCAGT AATTCAATT TCCAAAATGA TGTATTAATG TGGTATTCCT TTTCTTGCAG GACGTATACA
AGATTGGAGG TATTGGAACA GTGCCC
#WTS2 CTGTAACGAA AGGATAGTTT CTGCTGCAGT AATTGCTATT TCCAAAATGA TATATTAATG TGGTCTTCCT TTTCTTGCAG GACGTATACA
AGATTGGAGG TATTGGAACA GTGCCC
#WTS3 ATGTAACGAA AGGATAGTTT CTGCTGCAGT AATTGCTATT TCCAAAATGA GGTACTAATG TGGTCTTCCT TTTCTTGTAG GACGTATACA
AGATTGGAGG TATTGGAACA GTGCCC
#WTS4 ATGTAACGAA AGGCTAGTTT CTGCTGCAGT AATTGCTATT TCCAAAATGA GGTACTAATG TGGTCTTCCT TTTCTTGTAG GACGTATACA
AGATTGGAGG TATTGGAACA GTGCCC
#WTS5 ATGTAACGAA AGGATAGTTT CTGCTGCAGT TATTCCTATT TCCAAAATGA TGTACTAATG TGTTATTCCT TTTCTTGCAG GACGTATACA
AGATTGGAGG TATTGGAACA GTGCCC
#WTS6 ATGTAACGAA AGGATAATTT CTGCTGCAGT AATTCCAATT TCCAAAATGA GGTACTAATG TGGTCTTCCT TTTCTTGCAG GACGTATACA
AGATTGGAGG TATTGGAACA GTGCCC
#WTS7 ATGTAACGAA AGGATAGTTT CTGCTGCAGT AATTGCTATT TCCAAAATGA TGTACTAATG TGGTATTCCT TTTCTTGTAG GACGTATACA
AGATTGGAGG TATTGGAACA GTGCCC
#WTS8 ATGTAACGAA AGGATAGTTT CTGCTGCAGT TATTCCTATT TCCAAAATGA TGTATTAATG TGGTCTTCCT TTTCTTGTAG GACGTATACA
AGATTGGAGG TATTGGAACA GTGCCC
#WTS9 ATGTAACGAA AGGATAGTTT CTGCTGCAGT AATTCCTATT TCCAATATGA GGTACTAATG TGGTCTTCCT TTTCTTGTAG GACGTATACA
AGATTGGAGG TATTGGAACA GTGCCC
#WTS10 ATGTAACGAA AGGATAATTT CTGCTGCAGT AATTGCTATT TCCAAAATGA GGTACTAATG TGGTCTTCCT TTTCTTGTAG GACGTATACA
AGATTGGAGG TATTGGAACA GTGCCC
#WTS11 ATGTAACGAA AGGATAGTTT CTGCTGCAGT AATTCCTATT TCCAAAATGA GGTATTAATG TGGTCTTCCT TTTCTTGCAG GACGTATACA
AGATTGGAGG TATTGGAACA GTGCCC
#WTS12 ATGTAAGGAA AGGATAGTTT CTGCTGCAGT AATTCCTATT TCCAAAATGA TGTACTAATG TGGTCTTCCT TTTCTTGCAG GACGTATACA
AGATTGGAGG TATTGGAACA GTGCCC
#WTS13 ATGTAACGAA AGGCTAGTTT CTGCTGCAGT AATTGCTATT TCCAATACGA GGTACTAATG TGGTCTTCCT TTTCTTGTAG GACGTATACA
AGATTGGAGG TATTGGAACA GTGCCC