

Empagliflozin for the treatment of non-alcoholic fatty liver disease: a meta-analysis of randomized controlled trials

Xue Tang#, Huaping Zhang#, Xin Wang, Dan Yang

1. Department of Gastroenterology, Qianjiang Central Hospital of ChongQing,400900,China.
2. Department of Obstetrics,Qianjiang Central Hospital of ChongQing.
3. Department of General Medicine, Qianjiang Central Hospital of ChongQing,400900,China.

#The authors contributed equally.

Author emails:

Xue Tang: 771248331@qq.com, Huaping Zhang: 771248354@qq.com, Xin Wang: 1066887043@qq.com;
Dan Yang: Qianjiang8340@163.com;

Abstract

The efficacy of empagliflozin for non-alcoholic fatty liver disease remains controversial. This meta-analysis aims to explore the influence of empagliflozin versus placebo on the treatment of non-alcoholic fatty liver disease and we have searched PubMed, EMBase, Web of science, EBSCO, and Cochrane library databases through July 2021 for related randomized controlled trials (RCTs). Three RCTs involving 212 patients are included in the meta-analysis. Compared with control group for non-alcoholic fatty liver disease, empagliflozin treatment has no improvement in controlled attenuation parameter (CAP) score, hepatic steatosis and liver stiffness measurement (LSM) score, alanine aminotransferase (ALT), aspartate-aminotransferase (AST), low density lipoprotein (LDL) or triglyceride (TG). These indicate that empagliflozin treatment may be not effective for non-alcoholic fatty liver disease.

Key words: empagliflozin, non-alcoholic fatty liver disease, randomized controlled trials, meta-analysis.

DOI: <https://dx.doi.org/10.4314/ahs.v22i3.42>

Cite as: Tang X, Zhang H, Wang X, Yang D. *Empagliflozin for the treatment of non-alcoholic fatty liver disease: a meta-analysis of randomized controlled trials.* *Afri Health Sci.* 2022;22(3): 391-398. <https://dx.doi.org/10.4314/ahs.v22i3.42>

Introduction

Similar to obesity, the prevalence of non-alcoholic fatty liver disease has been increasing worldwide for the past 30 years¹⁻³. Nonalcoholic steatohepatitis is the progressive form of nonalcoholic fatty liver disease and has the features of hepatocellular damage, inflammation, and liver fibrosis⁴⁻⁶. The prevalence of ultrasound-determined fatty liver in patients with type 2 diabetes mellitus is estimated to range from 29.6 to 87.1%⁷. Serious non-alcoholic

fatty liver disease can progress to cirrhosis, end-stage liver disease and hepatocellular carcinoma. Liver diseases are anticipated to become the main cause of mortality in the next 20 years and an important cause for liver transplantation in the next few years^{8, 9}. Recent findings suggest that non-alcoholic fatty liver disease is a major cause of cryptogenic cirrhosis¹⁰.

Sodium-glucose co-transporter 2 (SGLT2) inhibitors are reported to increase urinary glucose excretion and decrease blood glucose and insulin levels^{11, 12}. They result in a significant increase in fatty acid (FA) mobilization from adipose tissues and FA uptake¹³. As one important SGLT2 inhibitor, the beneficial effects of empagliflozin on liver are seen in patients with non-alcoholic fatty liver disease^{14, 15}.

However, the benefit of empagliflozin for nonalcoholic fatty liver disease has not been well established and several studies reports the conflicting results¹⁵⁻¹⁷. With accu-

Corresponding author:

Dan Yang,
Postal address: 169 Chengxi Jiu Road, Chengxi
Street, Qianjiang District, Chongqing.
Fax number: 008602389342584,
Tel: 008602389342584
Email: Qianjiang8340@163.com

mulating evidence, we therefore perform a meta-analysis of RCTs to explore the efficacy of empagliflozin versus placebo for nonalcoholic fatty liver disease.

Materials and methods

Ethical approval and patient consent are not required because this is a meta-analysis of previously published studies. The meta-analysis are conducted according to PRISMA (Preferred Reporting Items for Systematic Reviews and Meta-Analyses)¹⁸.

Search strategy and study selection

Two investigators have independently searched the following databases (inception to July 2021): Pub Med, Embase, Web of science, EBSCO and Cochrane library databases. The electronic search strategy is conducted using the following keywords: “liver disease” OR “steatohepatitis” AND “empagliflozin”. We also check the reference lists of the screened full-text studies to identify other potentially eligible trials.

The inclusive selection criteria are as follows: (i) patients are diagnosed with non-alcoholic fatty liver disease; (ii) intervention treatments are empagliflozin versus placebo; (iii) study design is RCT.

Data extraction and outcome measures

We have extracted the following information: author, number of patients, age, female, body mass index, statin use and detail methods in each group etc. Data have been extracted independently by two investigators, and discrepancies are resolved by consensus. The primary outcomes are controlled attenuation parameter (CAP) score to evaluate hepatic steatosis and liver stiffness measurement (LSM) to assess fibrosis. Secondary outcomes

include alanine aminotransferase (ALT), aspartate-aminotransferase (AST), low density lipoprotein (LDL) and triglyceride (TG).

Quality assessment in individual studies

Methodological quality of the included studies is independently evaluated using the modified Jadad scale¹⁹. There are 3 items for Jadad scale: randomization (0-2 points), blinding (0-2 points), dropouts and withdrawals (0-1 points). The score of Jadad Scale varies from 0 to 5 points. An article with Jadad score ≤ 2 is considered to have low quality. If the Jadad score ≥ 3 , the study is thought to have high quality²⁰.

Statistical analysis

We estimate the standard mean difference (SMD) with 95% confidence interval (CI) for all continuous outcomes. The random-effects model is used regardless of heterogeneity. Heterogeneity is reported using the I² statistic, and I² > 50% indicates significant heterogeneity²¹. Whenever significant heterogeneity is present, we search for potential sources of heterogeneity via omitting one study in turn for the meta-analysis or performing subgroup analysis. All statistical analyses are performed using Review Manager Version 5.3 (The Cochrane Collaboration, Software Update, Oxford, UK).

Results

Literature search, study characteristics and quality assessment

A detailed flowchart of the search and selection results is shown in Figure 1. 132 potentially relevant articles are identified initially. Finally, three RCTs are included in the meta-analysis¹⁵⁻¹⁷.

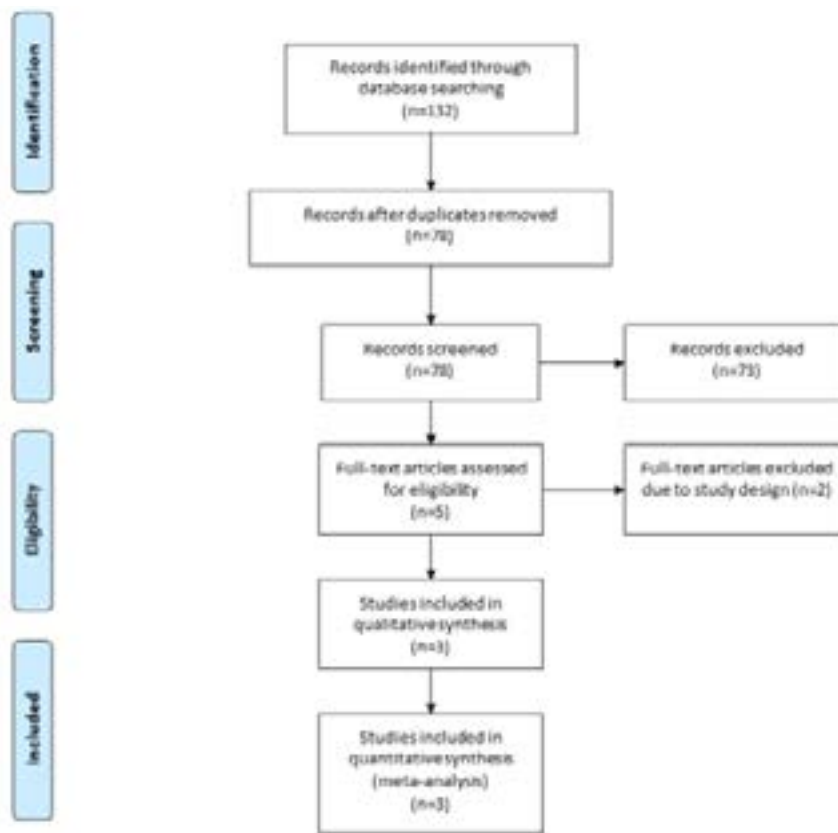


Figure. 1 Flow diagram of study searching and selection process.

The baseline characteristics of three eligible RCTs in the meta-analysis are summarized in Table 1. The three studies are published between 2018 and 2021, and sample sizes range from 50 to 90 with a total of 212. Two RCTs report all included patients with diabetes^{15, 16}, while the remaining RCT report patients without diabetes¹⁷. Em-

pagliflozin is administered at the dose of 10 mg daily. Among the three studies included here, two studies report CAP score and LSM^{16, 17}, three studies report ALT, AST¹⁵⁻¹⁷, while two studies report LDL and TG^{15, 16}. Jadad scores of the three included studies vary from 4 to 5, and all three studies have high quality according to quality assessment.

Table 1: Characteristics of included studies

NO.	Author	Empagliflozin group						Control group						Jada scores
		No	Age (years)	Female (n)	Body mass index (kg/m ²)	Statin use (n)	Methods	No	Age (years)	Female (n)	Body mass index (kg/m ²)	Statin use (n)	Methods	
1	Chehrehgosha 2021	35	50.5±8.4	20	30.9±3.3	34	empagliflozin 10 mg daily for 24 weeks	37	51.8±7.8	23	30.2±4.4	35	placebo	5
2	Taheri 2020	43	43.8±9.7	15	30.5±2.3	5	empagliflozin (10 mg/day) for 24 weeks	47	44.1±9.3	25	30.7±3.5	6	placebo	5
3	Kuchay 2018	25	50.7±12.8	9	30.0±3.8	-	empagliflozin (10 mg/day) for 20 weeks	25	49.1±10.3	8	29.4±3.1	-	placebo	4

Primary outcomes: CAP score and LSM

These outcome data are analyzed with the random-effects model, and compared to control group for non-alcoholic fatty liver disease, empagliflozin treatment has no obvious effect on CAP score (SMD=-0.17; 95% CI=-0.48 to

0.14; P=0.29) with no heterogeneity among the studies (I²=0%, heterogeneity P=0.29) (Figure 2) or LSM score (SMD=-0.25; 95% CI=-0.74 to 0.23; P=0.30) with significant heterogeneity among the studies (I²=58%, heterogeneity P=0.30) (Figure 3).

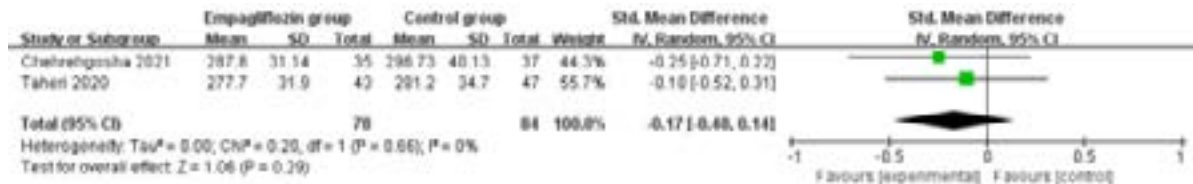


Figure. 2 Forest plot for the meta-analysis of CAP score.

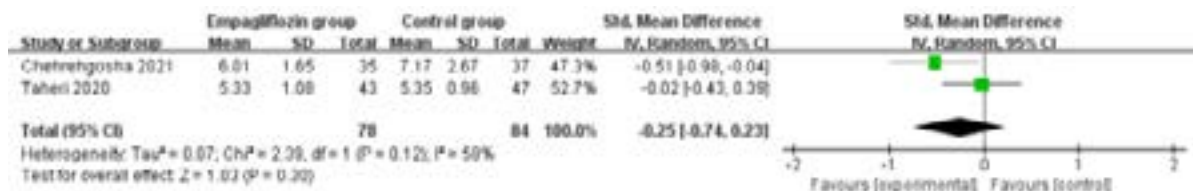


Figure. 3 Forest plot for the meta-analysis of LSM score.

Sensitivity analysis

Significant heterogeneity is observed among the included studies for LSM score, but there are just two RCTs included. Thus, we do not perform sensitivity analysis via omitting one study in turn to detect heterogeneity.

Secondary outcomes

In comparison with control group for non-alcoholic fatty liver disease, empagliflozin treatment shows no substantial impact on ALT (SMD=-0.09; 95% CI=-0.37 to 0.18; P=0.50; Figure 4), AST (SMD=-0.26; 95% CI=-0.53 to 0.02; P=0.07; Figure 5), LDL (SMD=-0.31; 95% CI=-0.74 to 0.11; P=0.15; Figure 6) or TG (SMD=-0.17; 95% CI=-0.54 to 0.19; P=0.35; Figure 7).

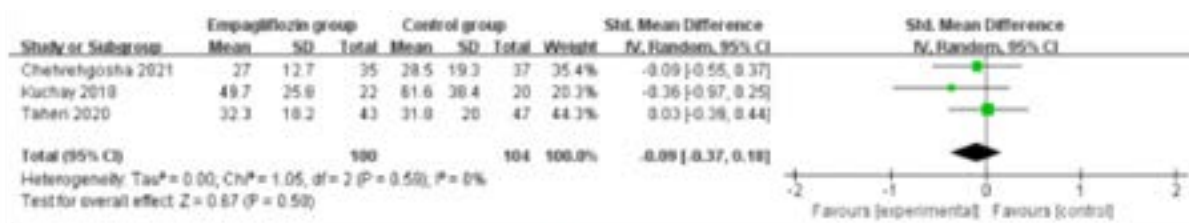


Figure. 4 Forest plot for the meta-analysis of ALT.

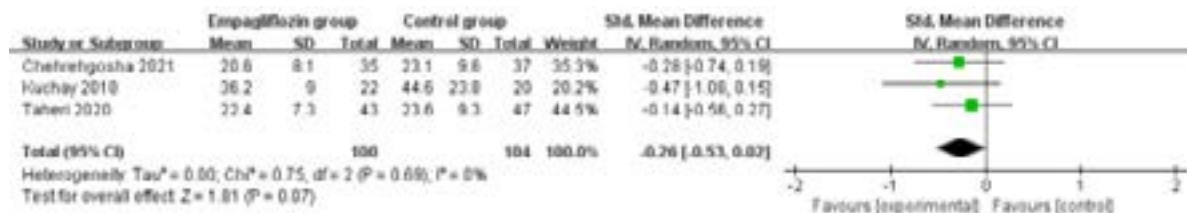


Figure. 5 Forest plot for the meta-analysis of AST.

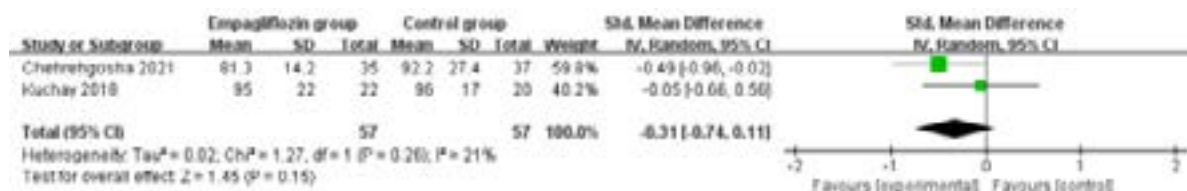


Figure. 6 Forest plot for the meta-analysis of LDL.

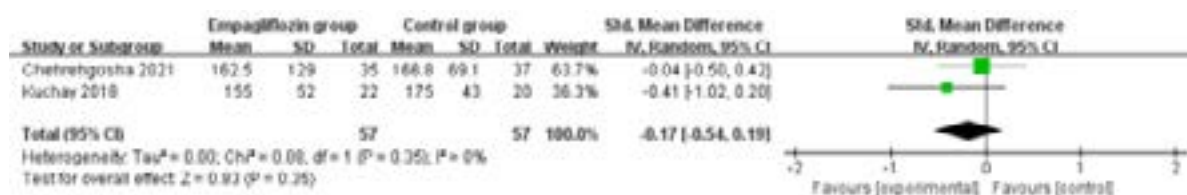


Figure. 7 Forest plot for the meta-analysis of TG.

Discussion

Nonalcoholic fatty liver disease commonly occur in patients with type 2 diabetes mellitus which serves as a leading cause of chronic liver disease^{22, 23}. Type 2 diabetes mellitus is associated with increased risk of cirrhosis, hepatocellular carcinoma, and double the death rate of liver cirrhosis²⁴. Liver fat accumulation may result in triglyceride accumulation (steatosis), nonalcoholic steatohepatitis, cirrhosis, and even hepatocellular carcinoma²⁵. There are still lack of effective pharmacologic agents for the treatment of nonalcoholic fatty liver disease. Several anti-diabetic agents have been explored considering the importance of insulin resistance for non-alcoholic fatty liver disease, but the results are variable²⁶⁻²⁸.

SGLT2 inhibitors are widely used to prevent glucose reabsorption in renal proximal tubules, leading to increased urinary glucose excretion and decreased blood glucose and insulin levels^{29, 30}. These drugs have the potential in reducing macrovascular events and producing beneficial

effects on liver function in both clinical trials and animal models²⁹⁻³². They also demonstrate the ability to decrease insulin resistance, adipose tissue dysfunction, and inflammation responses². These provide the theoretical support the benefits of SGLT2 inhibitors to non-alcoholic fatty liver disease. As one important kind of SGLT2 inhibitors, several studies demonstrated the potential of empagliflozin in treating non-alcoholic fatty liver disease^{16, 17}. Our meta-analysis concludes that empagliflozin demonstrates no beneficial effect on hepatic steatosis or fibrosis as shown by the LSM and CAP score in patients with non-alcoholic fatty liver disease. In consistent, no improvements is seen in terms of ALT, AST, LDL or TG after empagliflozin treatment. Regarding the sensitivity analysis, significant heterogeneity remains. Several factors may lead to the heterogeneity. Firstly, the treatment duration of empagliflozin ranges from 20 to 24 weeks. Secondly, two RCTs report patients with diabetes^{15, 16}, while the remaining RCT report patients without diabetes¹⁷.

Thirdly, there may be some confounding factors such as age, obesity, statin use and blood glucose.

The adverse events of empagliflozin are generally mild and mainly include hypoglycemia, urticaria, fatigue, nocturia and polyuria^{15, 16}. Our meta-analysis also has some important limitations. Firstly, our analysis is based on three RCTs, and all of them have a relatively small sample size (n<100). Overestimation of the treatment effect was more likely in smaller trials compared with larger samples. There is significant heterogeneity, and empagliflozin treatment may produce variable impact in patients with the comorbidity of diabetes or not. Finally, treatment duration ranges from 20 weeks to 24 weeks, and the duration may be not sufficient to produce the positive results.

Conclusions

Empagliflozin treatment may provide no additional benefits for non-alcoholic fatty liver disease and should be not recommended in clinical work.

Ethics approval and consent to participate

Not applicable.

Declaration of conflict of interest:

None, the authors contribute equally.

Consent for publication

Not applicable.

Competing interests

The authors declare that they have no competing interests.

Funding

Not applicable.

Acknowledgements

None.

References

1. Trends in adult body-mass index in 200 countries from 1975 to 2014: a pooled analysis of 1698 population-based measurement studies with 19.2 million participants, *Lancet* (London, England) 387(10026) (2016) 1377-1396.
2. M. Duvnjak, V. Tomasic, M. Gomeric, L. Smircic Duvnjak, N. Barsic, I. Lerotic, Therapy of nonalcoholic fatty liver disease: current status, *Journal of Physiology and Pharmacology: an official Journal of the Polish Physiological Society* 60 Suppl 7 (2009) 57-66.

3. S. Singh, N.A. Osna, K.K. Kharbanda, Treatment options for alcoholic and non-alcoholic fatty liver disease: A review, *World journal of gastroenterology* 23(36) (2017) 6549-6570.

4. L.A. Adams, S. Sanderson, K.D. Lindor, P. Angulo, The histological course of nonalcoholic fatty liver disease: a longitudinal study of 103 patients with sequential liver biopsies, *Journal of hepatology* 42(1) (2005) 132-8.

5. J.S. Park, Y.J. Shim, B.H. Kang, W.K. Lee, B.H. Min, Hepatocyte-specific clusterin overexpression attenuates diet-induced nonalcoholic steatohepatitis, *Biochemical and biophysical research communications* 495(2) (2018) 1775-1781.

6. D. Jahn, D. Dorbath, S. Kircher, A. Nier, I. Bergheim, K. Lenaerts, H.M. Hermanns, A. Geier, Beneficial Effects of Vitamin D Treatment in an Obese Mouse Model of Non-Alcoholic Steatohepatitis, *Nutrients* 11(1) (2019).

7. W. Dai, L. Ye, A. Liu, S.W. Wen, J. Deng, X. Wu, Z. Lai, Prevalence of nonalcoholic fatty liver disease in patients with type 2 diabetes mellitus: A meta-analysis, *Medicine* 96(39) (2017) e8179.

8. K. Ray, NAFLD-the next global epidemic, *Nature reviews. Gastroenterology & hepatology* 10(11) (2013) 621.

9. E. Cobbina, F. Akhlaghi, Non-alcoholic fatty liver disease (NAFLD) - pathogenesis, classification, and effect on drug metabolizing enzymes and transporters, *Drug metabolism reviews* 49(2) (2017) 197-211.

10. A. Poonawala, S.P. Nair, P.J. Thuluvath, Prevalence of obesity and diabetes in patients with cryptogenic cirrhosis: a case-control study, *Hepatology (Baltimore, Md.)* 32(4 Pt 1) (2000) 689-92.

11. C.H. Jung, J.O. Mok, The Effects of Hypoglycemic Agents on Non-alcoholic Fatty Liver Disease: Focused on Sodium-Glucose Cotransporter 2 Inhibitors and Glucagon-Like Peptide-1 Receptor Agonists, *Journal of obesity & metabolic syndrome* 28(1) (2019) 18-29.

12. S. Kahl, S. Gancheva, K. Straßburger, C. Herder, J. Machann, H. Katsuyama, S. Kabisch, E. Henkel, S. Kopf, M. Lagerpusch, K. Kantartzis, Y. Kupriyanova, D. Markgraf, T. van Gemert, B. Knebel, M.F. Wolkersdorfer, O. Kuss, J.H. Hwang, S.R. Bornstein, C. Kasperk, N. Stefan, A. Pfeiffer, A.L. Birkenfeld, M. Roden, Empagliflozin Effectively Lowers Liver Fat Content in Well-Controlled Type 2 Diabetes: A Randomized, Double-Blind, Phase 4, Placebo-Controlled Trial, *Diabetes care* 43(2) (2020) 298-305.

13. L. Razavi-Nematollahi, F. Ismail-Beigi, Adverse Effects of Glycemia-Lowering Medications in Type 2 Diabetes, *Current Diabetes reports* 19(11) (2019) 132.
14. N.E. Gharaibeh, M.N. Rahhal, L. Rahimi, F. Ismail-Beigi, SGLT-2 inhibitors as promising therapeutics for non-alcoholic fatty liver disease: pathophysiology, clinical outcomes, and future directions, *Diabetes, metabolic syndrome and obesity : targets and therapy* 12 (2019) 1001-1012.
15. M.S. Kuchay, S. Krishan, S.K. Mishra, K.J. Farooqui, M.K. Singh, J.S. Wasir, B. Bansal, P. Kaur, G. Jevalikar, H.K. Gill, N.S. Choudhary, A. Mithal, Effect of Empagliflozin on Liver Fat in Patients With Type 2 Diabetes and Nonalcoholic Fatty Liver Disease: A Randomized Controlled Trial (E-LIFT Trial), *Diabetes care* 41(8) (2018) 1801-1808.
16. H. Chehrehgosha, M.R. Sohrabi, F. Ismail-Beigi, M. Malek, M. Reza Babaei, F. Zamani, H. Ajdarkosh, M. Khoonsari, A.E. Fallah, M.E. Khamseh, Empagliflozin Improves Liver Steatosis and Fibrosis in Patients with Non-Alcoholic Fatty Liver Disease and Type 2 Diabetes: A Randomized, Double-Blind, Placebo-Controlled Clinical Trial, *Diabetes therapy : research, treatment and education of diabetes and related disorders* 12(3) (2021) 843-861.
17. H. Taheri, M. Malek, F. Ismail-Beigi, F. Zamani, M. Sohrabi, M. Reza Babaei, M.E. Khamseh, Effect of Empagliflozin on Liver Steatosis and Fibrosis in Patients With Non-Alcoholic Fatty Liver Disease Without Diabetes: A Randomized, Double-Blind, Placebo-Controlled Trial, *Advances in therapy* 37(11) (2020) 4697-4708.
18. D. Moher, A. Liberati, J. Tetzlaff, D.G. Altman, P. Group, Preferred reporting items for systematic reviews and meta-analyses: the PRISMA statement, *Journal of clinical epidemiology* 62(10) (2009) 1006-12.
19. A.R. Jadad, R.A. Moore, D. Carroll, C. Jenkinson, DJM Reynolds, DJ Gavaghan, HJ McQuay, Assessing the quality of reports of randomized clinical trials: Is blinding necessary?, *Controlled Clinical Trials* 17(1) (1996) 1-12.
20. LL Kjaergard, J Villumsen, C Gluud. Reported Methodologic Quality and Discrepancies between Large and Small Randomized Trials in Meta-Analyses, *Annals of Internal Medicine* 135(11) (2001) 982-989.
21. JP Higgins, S.G. Thompson, Quantifying heterogeneity in a meta-analysis, *Statistics in Medicine* 21(11) (2002) 1539-58.
22. HM El-Ashmawy, AM Ahmed. Serum fetuin-B level is an independent marker for nonalcoholic fatty liver disease in patients with type 2 diabetes, *European journal of Gastroenterology & Hepatology* (2019).
23. M.M. Smits, L. Tonneijck, M.H. Muskiet, M.H. Kramer, P.J. Pouwels, I.C. Pieters-van den Bos, T. Hoekstra, M. Diamant, D.H. van Raalte, D.L. Cahen, Twelve week liraglutide or sitagliptin does not affect hepatic fat in type 2 diabetes: a randomised placebo-controlled trial, *Diabetologia* 59(12) (2016) 2588-2593.
24. S. McPherson, T. Hardy, E. Henderson, A.D. Burt, C.P. Day, Q.M. Anstee, Evidence of NAFLD progression from steatosis to fibrosing-steatohepatitis using paired biopsies: implications for prognosis and clinical management, *Journal of Hepatology* 62(5) (2015) 1148-55.
25. E. Bugianesi, P. Manzini, S. D'Antico, E. Vanni, F. Longo, N. Leone, P. Massarenti, A. Piga, G. Marchesini, M. Rizzetto, Relative contribution of iron burden, HFE mutations, and insulin resistance to fibrosis in nonalcoholic fatty liver, *Hepatology* 39(1) (2004) 179-87.
26. A.J. Sanyal, N. Chalasani, K.V. Kowdley, A. McCullough, A.M. Diehl, N.M. Bass, B.A. Neuschwander-Tetri, J.E. Lavine, J. Tonascia, A. Unalp, M. Van Natta, J. Clark, E.M. Brunt, D.E. Kleiner, J.H. Hoofnagle, P.R. Robuck, C.R.N. Nash, Pioglitazone, vitamin E, or placebo for nonalcoholic steatohepatitis, *The New England Journal of Medicine* 362(18) (2010) 1675-85.
27. R. Loomba, G. Lutchman, D.E. Kleiner, M. Ricks, J.J. Feld, B.B. Borg, A. Modi, P. Nagabhyru, A.E. Sumner, T.J. Liang, J.H. Hoofnagle, Clinical trial: pilot study of metformin for the treatment of non-alcoholic steatohepatitis, *Alimentary Pharmacology & Therapeutics* 29(2) (2009) 172-82.
28. M. Olaywi, T. Bhatia, S. Anand, S. Singhal, Novel anti-diabetic agents in non-alcoholic fatty liver disease: a mini-review, *Hepatobiliary & pancreatic diseases international: HBPD INT* 12(6) (2013) 584-8.
29. B. Zinman, C. Wanner, J.M. Lachin, D. Fitchett, E. Bluhmki, S. Hantel, M. Mattheus, T. Devins, O.E. Johansen, H.J. Woerle, U.C. Broedl, S.E. Inzucchi, Empagliflozin, Cardiovascular Outcomes, and Mortality in Type 2 Diabetes, *The New England Journal of Medicine* 373(22) (2015) 2117-28.
30. J.H. Wu, C. Foote, J. Blomster, T. Toyama, V. Perkovic, J. Sundström, B. Neal, Effects of sodium-glucose cotransporter-2 inhibitors on cardiovascular events, death, and major safety outcomes in adults with type 2 diabetes: a systematic review and meta-analysis, *The Lancet. Diabetes & Endocrinology* 4(5) (2016) 411-9.

31. C.J. Bailey, J.L. Gross, A. Pieters, A. Bastien, J.F. List, Effect of dapagliflozin in patients with type 2 diabetes who have inadequate glycaemic control with metformin: a randomised, double-blind, placebo-controlled trial, *Lancet* (London, England) 375(9733) (2010) 2223-33.
32. A Tahara, E Kurosaki, M Yokono, D Yamajuku, R Kihara, Y Hayashizaki, T Takasu, M Imamura, Q Li, H Tomiyama, Y Kobayashi, A Noda, M Sasamata, M Shibasaki. Effects of SGLT2 selective inhibitor ipragliflozin on hyperglycemia, hyperlipidemia, hepatic steatosis, oxidative stress, inflammation, and obesity in type 2 diabetic mice. *European Journal of Pharmacology* 715(1-3) (2013) 246-55.